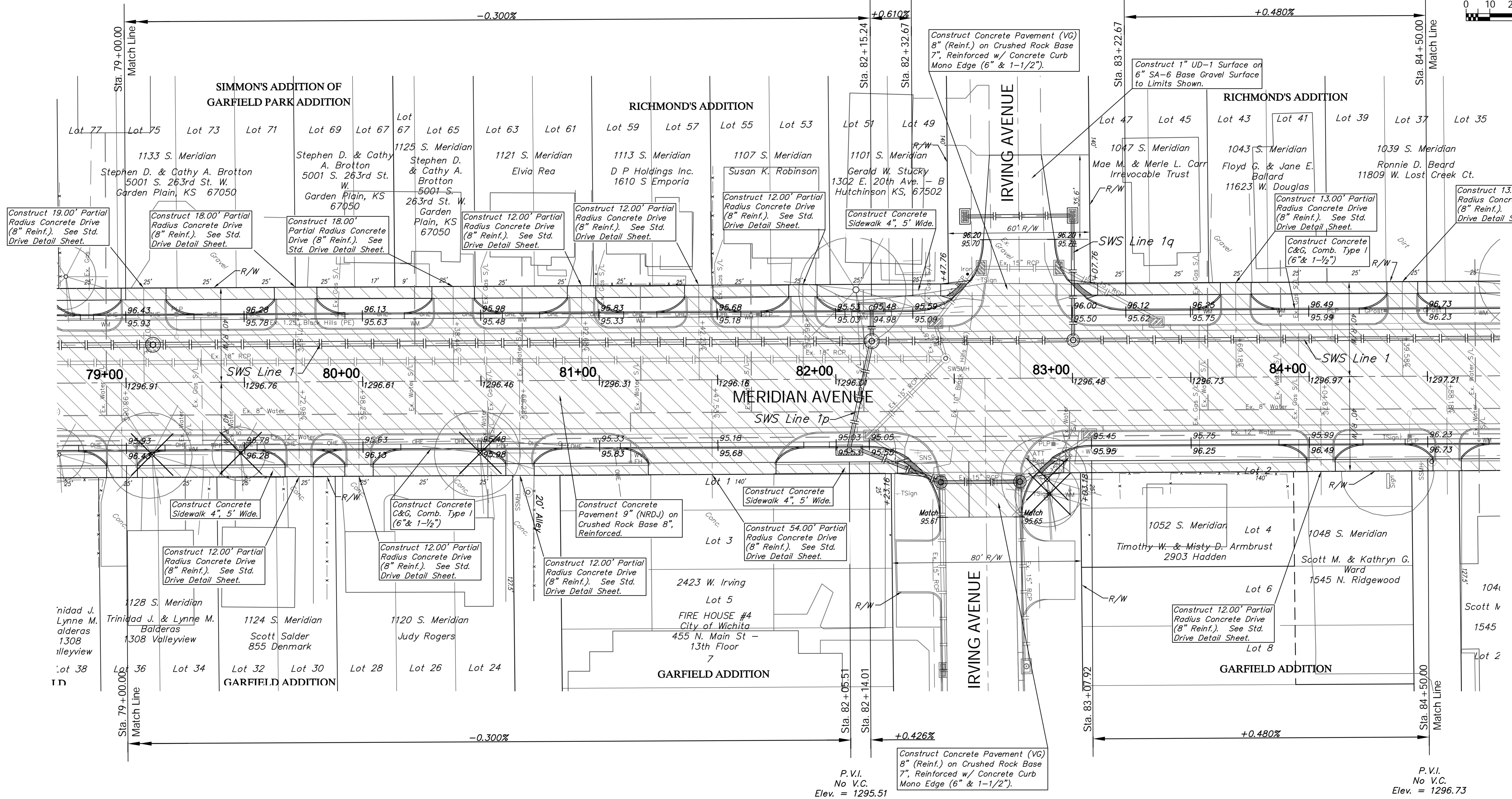
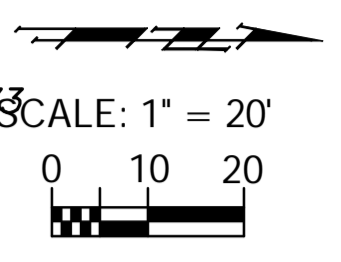


FHWA REGION NO.	STATE	PROJECT NO.	FISCAL YEAR	SHEET NO.	TOTAL SHEETS
7	KANSAS	XXN-XXXX-01	2013		

P.V.I.
No V.C.
Elev. = 1295.48

P.V.I.
No V.C.
Elev. = 1296.73



Note:
Trees/Shrubs to be removed are marked thus:

Areas of Full Pavement Removal & Replacement are Indicated By:

Drawing File: E:\Projects\Meridian - Orient to McCormick\Civil 3d\Meridian Base.dwg (Pav 07)
 Design: TPV
 Drawn: STAFF
 Approved: TPV
 Scale: NOTED

Project No. 1004E493 CAPITAL IMPROVEMENT PROJECT

MERIDIAN AVENUE PAVING
 Sta. 79 + 00.00 to Sta. 84 + 50.00
 MERIDIAN AVENUE - ORIENT BOULEVARD to MCCORMICK AVENUE

Baughman Company, P.A.
 315 Ellis St., Wichita, KS 67211 P 316.262.1271 F 316.262.0149
 ENGINEERING | SURVEYING | PLANNING | LANDSCAPE ARCHITECTURE

April 2013
 SHEET
 OF