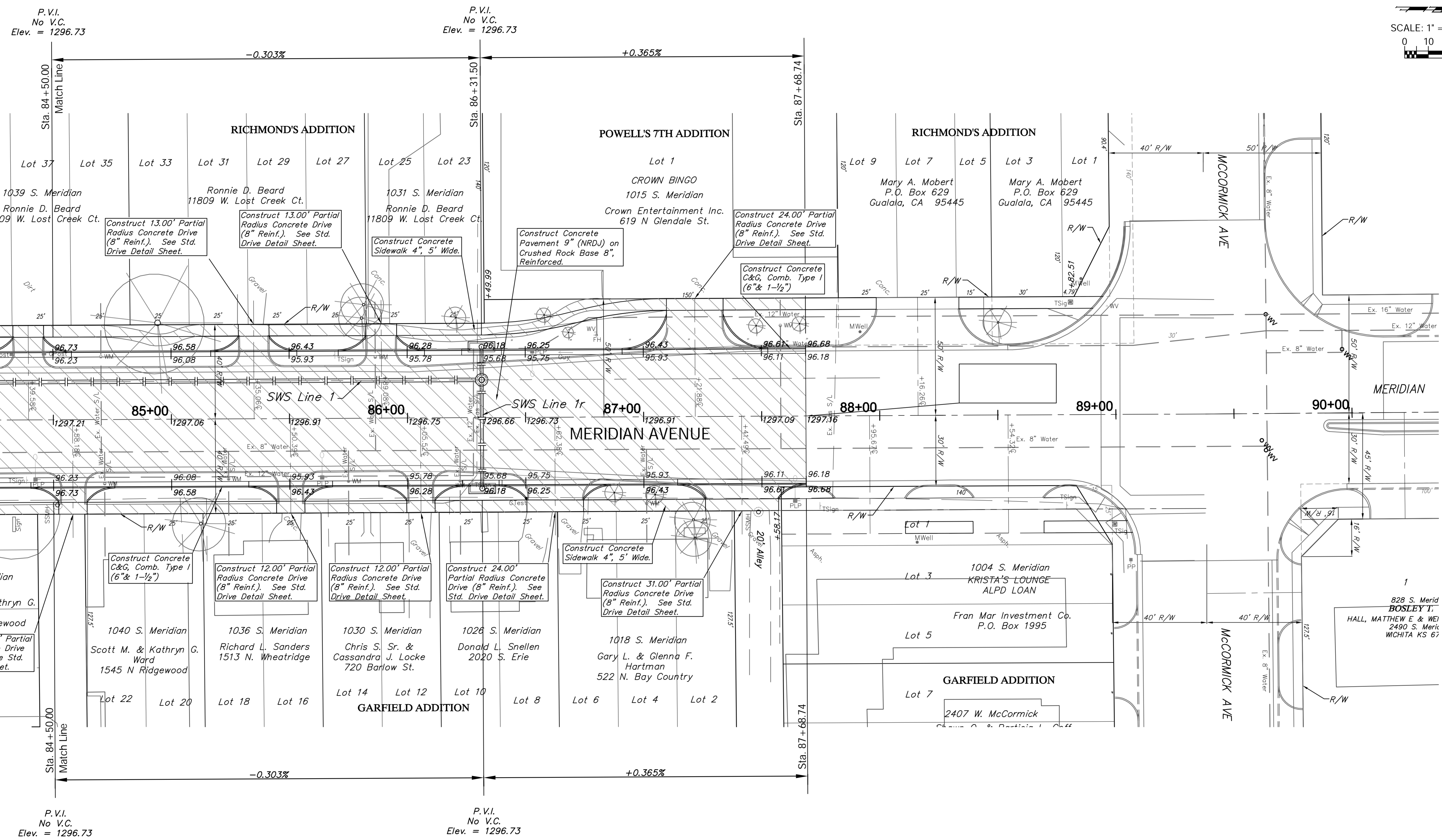
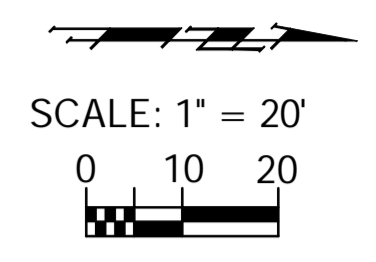


FHWA REGION NO.	STATE	PROJECT NO.	FISCAL YEAR	SHEET NO.	TOTAL SHEETS
7	KANSAS	XXN-XXXX-01	2013		



Construct 12.00' Partial Radius Concrete Drive (8" Reinf.). See Std. Drive Detail Sheet.

Construct Concrete C&G, Comb. Type 1 (6" & 1-1/2")

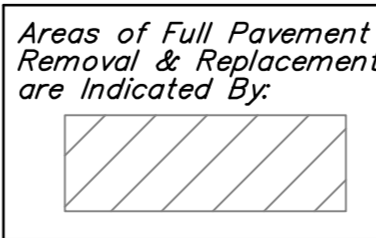
Construct 12.00' Partial Radius Concrete Drive (8" Reinf.). See Std. Drive Detail Sheet.

Construct 12.00' Partial Radius Concrete Drive (8" Reinf.). See Std. Drive Detail Sheet.

Construct 24.00' Partial Radius Concrete Drive (8" Reinf.). See Std. Drive Detail Sheet.

Construct Concrete Sidewalk 4", 5' Wide.

Construct 31.00' Partial Radius Concrete Drive (8" Reinf.). See Std. Drive Detail Sheet.



Note:
Trees/Shrubs to be removed are marked thus:

Drawing File: E:/Projects/Meridian - Orient to McCormick/Civil 3d/Meridian Base.dwg (Pav 08)
 Design: TPV
 Drawn: STAFF
 Approved: TPV
 Scale: NOTED

Project No. 10-04-493 CAPITAL IMPROVEMENT PROJECT

MERIDIAN AVENUE PAVING
 Sta. 84 + 50.00 to Sta. 87 + 68.74

Baughman Company, P.A.
 315 Ellis St., Wichita, KS 67211 P 316-262-7271 F 316-262-0149
 ENGINEERING | SURVEYING | PLANNING | LANDSCAPE ARCHITECTURE

April 2013
 SHEET
 OF