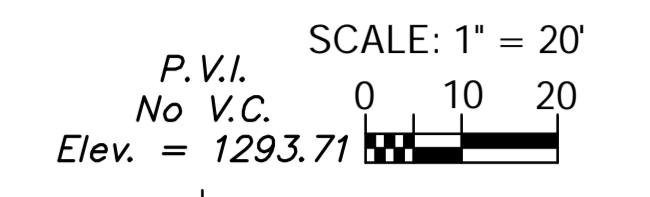


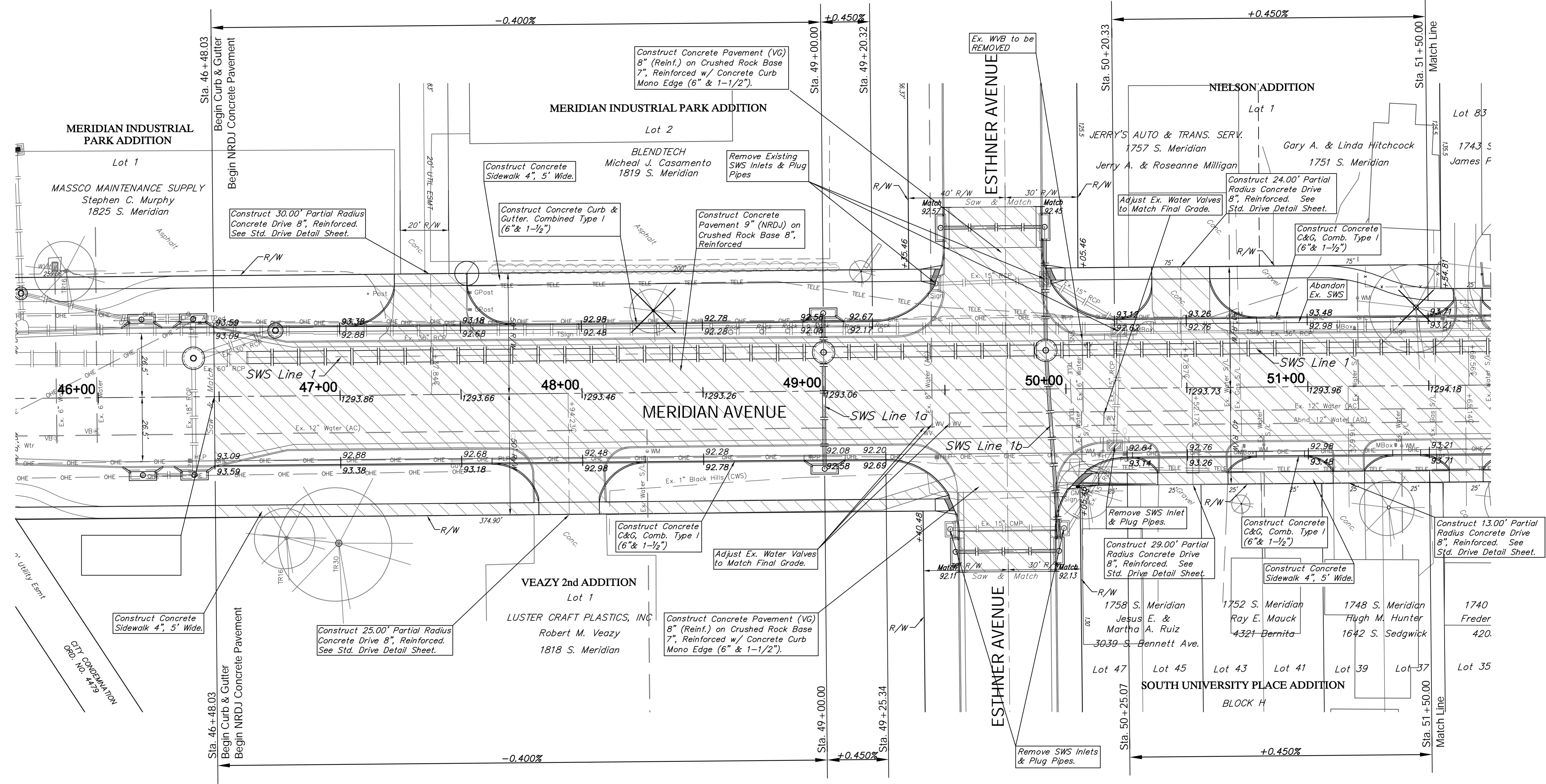
FHWA REGION NO.	STATE	PROJECT NO.	FISCAL YEAR	SHEET NO.	TOTAL SHEETS
7	KANSAS	XXN-XXX-01	2013		

NOTE:
Fence in Right-of-Way to be Removed and Stockpiled on Owners Property. Const. to be included in Bid Item "Site Clearing"



P.V.I.
No V.C.
Elev. = 1292.58

P.V.I.
No V.C.
Elev. = 1293.71



P.V.I.
No V.C.
Elev. = 1292.58

P.V.I.
No V.C.
Elev. = 1293.71

Areas of Full Pavement Removal & Replacement are Indicated By:

Note:
Trees/Shrubs to be removed are marked thus:

Drawing File: E:\Projects\Meridian - Orient to McCormick\Civil 3d\Meridian Base.dwg (Pav 01)
Project No. 1004E493 CAPITAL IMPROVEMENT PROJECT

Design: TPV
Drawn: STAFF
Approved: TPV
Scale: NOTED

MERIDIAN AVENUE PAVING
Sta. 46+48.03 to Sta. 51+50.00

Baughman Company, P.A.
315 Ellis St., Wichita, KS 67211 P 316-262-1271 F 316-262-0149

ENGINEERING | SURVEYING | PLANNING | LANDSCAPE ARCHITECTURE

April 2013
SHEET
OF