

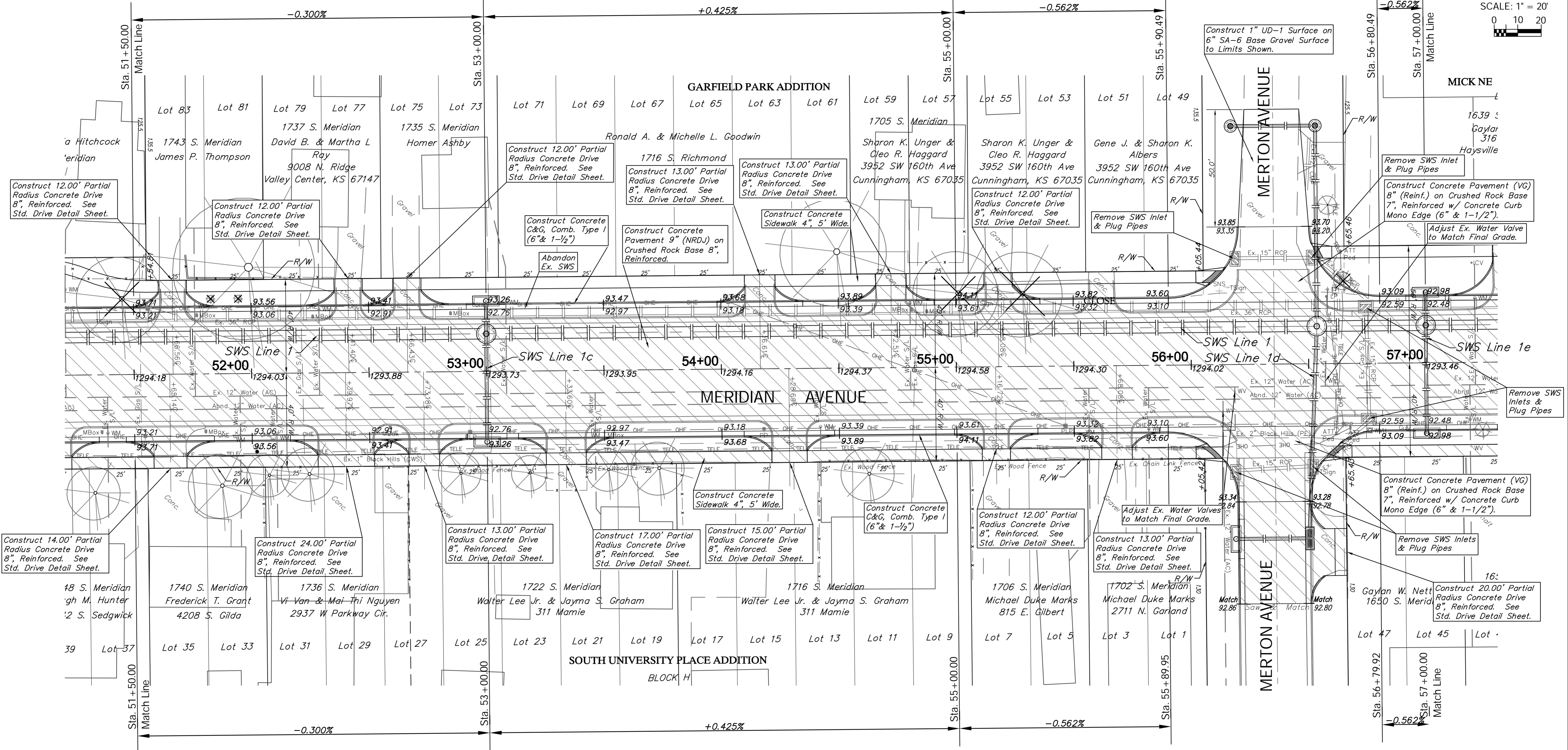
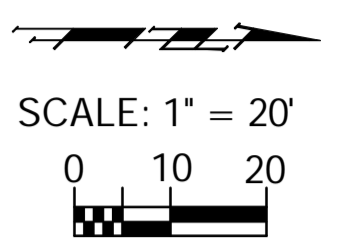
FHWA REGION NO.	STATE	PROJECT NO.	FISCAL YEAR	SHEET NO.	TOTAL SHEETS
7	KANSAS	XXN-XXXX-01	2013		

P.V.I.
No V.C.
Elev. = 1293.71

P.V.I.
No V.C.
Elev. = 1293.26

P.V.I.
No V.C.
Elev. = 1294.11

P.V.I.
No V.C.
Elev. = 1292.98



P.V.I.
No V.C.
Elev. = 1293.71

P.V.I.
No V.C.
Elev. = 1293.26

P.V.I.
No V.C.
Elev. = 1294.11

P.V.I.
No V.C.
Elev. = 1292.98

Note:
Trees/Shrubs to be removed are marked thus:

Areas of Full Pavement Removal & Replacement are Indicated By:

Drawing File: E:\Projects\Meridian - Orient to McCormick\Civil 3d\Meridian Base.dwg (Pav 02)
Project No. 1004E493 CAPITAL IMPROVEMENT PROJECT
Design: TPV
Drawn: STAFF
Approved: TPV
Scale: NOTED
MERIDIAN AVENUE PAVING
Sta. 51 + 50.00 to Sta. 57 + 00.00
MERIDIAN AVENUE - ORIENT BOULEVARD TO MCCORMICK AVENUE

Baughman Company, P.A.
315 Ellis St., Wichita, KS 67211 P 316.262.1271 F 316.262.0149
ENGINEERING | SURVEYING | PLANNING | LANDSCAPE ARCHITECTURE

April 2013
SHEET
OF