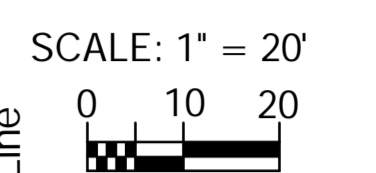
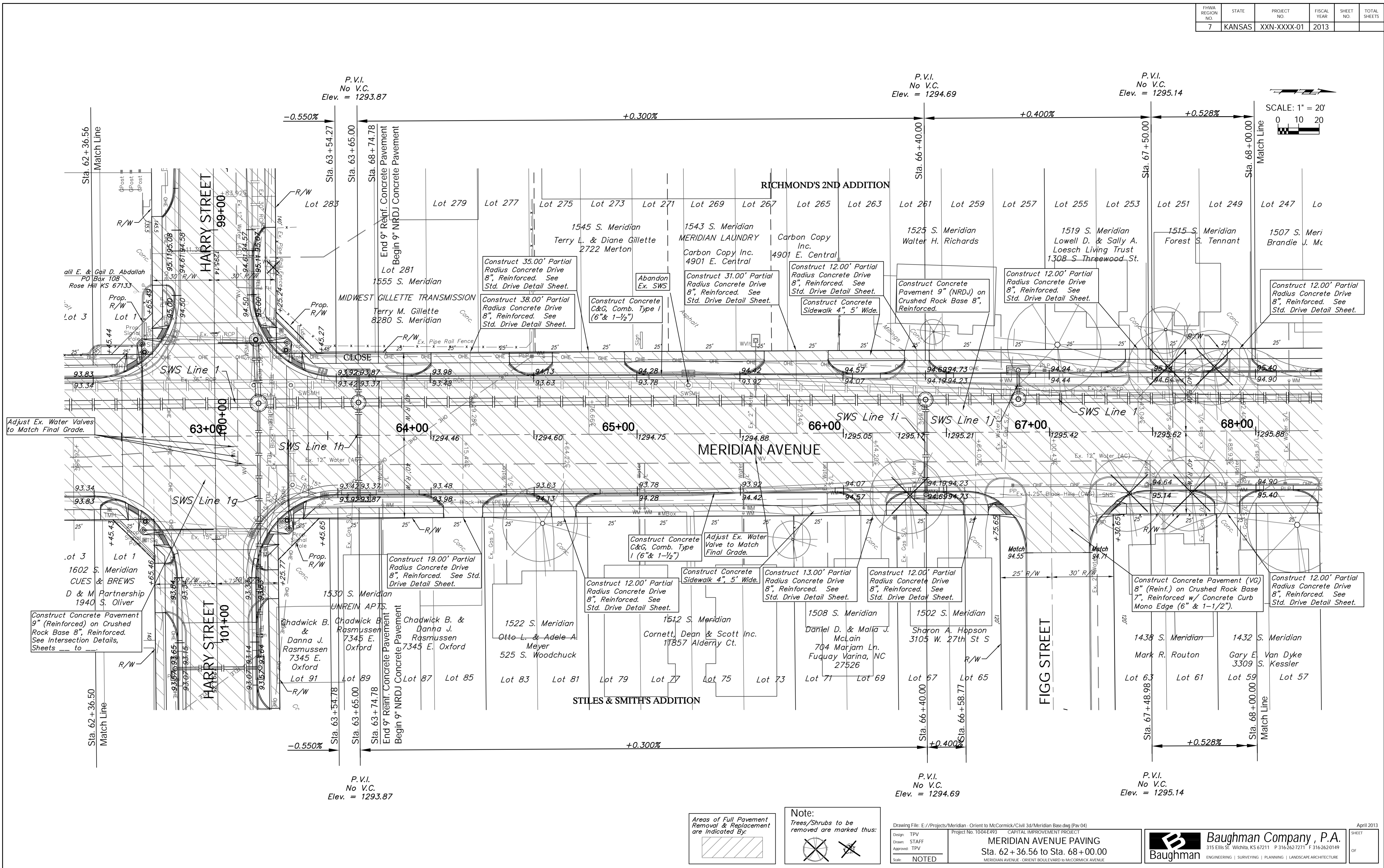


FHWA REGION NO.	STATE	PROJECT NO.	FISCAL YEAR	SHEET NO.	TOTAL SHEETS
7	KANSAS	XXN-XXXX-01	2013		



**Note:**  
Trees/Shrubs to be removed are marked thus:

Areas of Full Pavement Removal & Replacement are Indicated By:

Drawing File: E:\Projects\Meridian - Orient to McCormick\Civil 3d\Meridian Base.dwg (Pav 04)  
 Project No. 1004E493 CAPITAL IMPROVEMENT PROJECT  
**MERIDIAN AVENUE PAVING**  
 Sta. 62 + 36.56 to Sta. 68 + 00.00  
 MERIDIAN AVENUE - ORIENT BOULEVARD TO MCCORMICK AVENUE  
 Design: TPV  
 Drawn: STAFF  
 Approved: TPV  
 Scale: NOTED

**Baughman Company, P.A.**  
 315 Ellis St., Wichita, KS 67211 P 316-262-1271 F 316-262-0149  
 ENGINEERING | SURVEYING | PLANNING | LANDSCAPE ARCHITECTURE

April 2013  
 SHEET  
 OF