

STREET & STORM WATER SEWER IMPROVEMENTS

to serve

TYLER ROAD

29th Street North to 37th Street North

FOR

THE CITY OF WICHITA,
SEDGWICK COUNTY, KANSAS

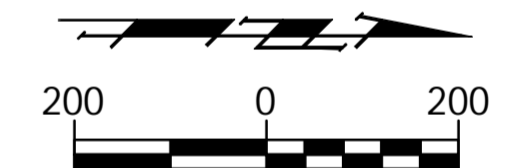
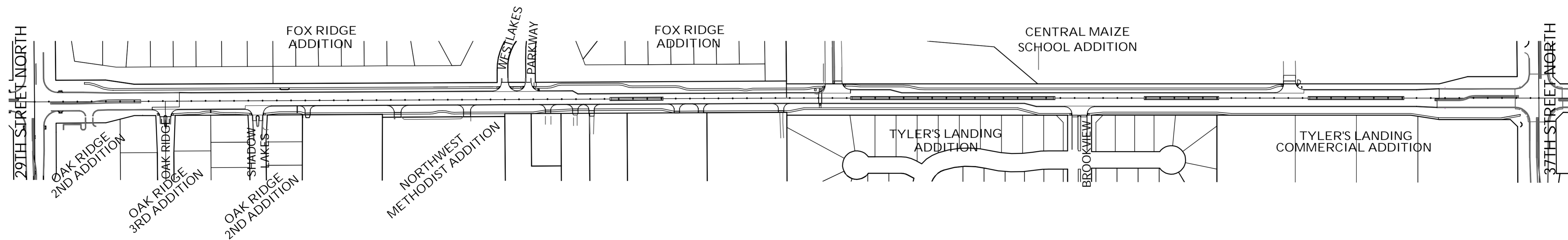
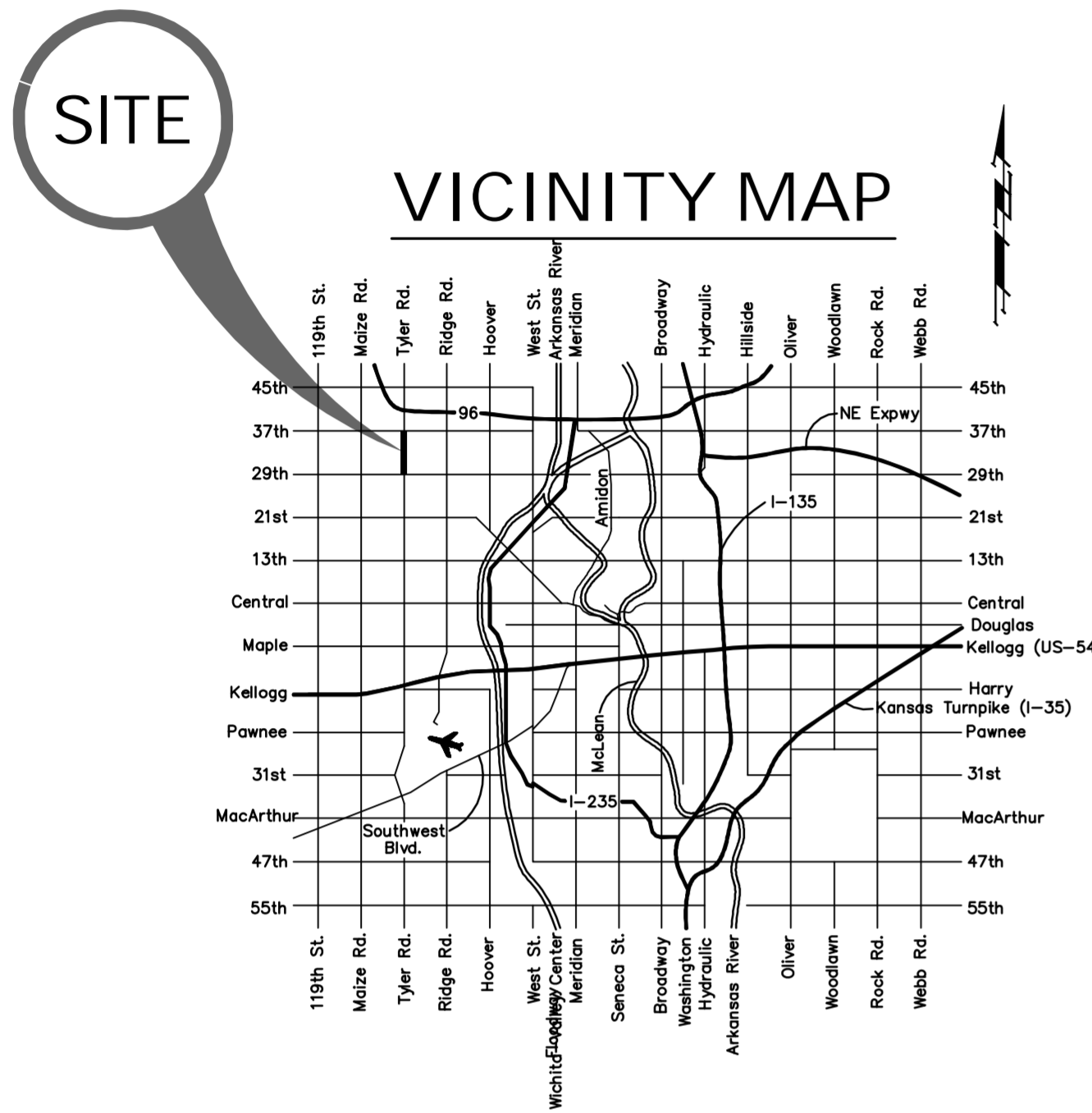
Gary Janzen, P.E., City Engineer

City Project No. 472-84700
O.C.A. No. 706991

September 2014

Index

1	Title Sheet
2	Keysheet
3	Notepage
4-6	Typical Sections
7-9	Pavement Details
10-19	Tyler Road Paving Plans
20-21	Valley Gutter Details
22-30	Stormwater Sewer Plan/Profiles
31-35	Stormwater Sewer Details
36	Water Line Relocation Plan/Profiles
37	Fire Hydrant Relocation Details
38	Standard Water Details
39-48	Marking and Signing Plan
49	Marking and Signing Details
50	Signalization Plan
51	Signal Wiring Plan
52-53	Traffic Signalization Details
54-56	Construction Traffic Control Plans
57	Detour Plan
58-61	Construction Traffic Control Details
62-63	Quantity Recapitulations
64	Seeding/Sodding Plan
65-74	Landscaping Plans
75	Erosion Control Plans
76-79	Erosion Control Details
80-90	Tyler Road Cross Sections



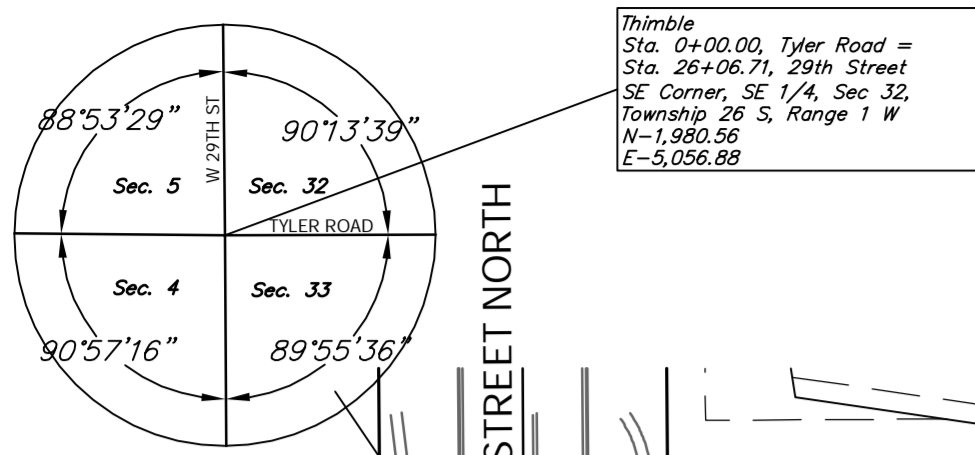
OFFICE CHECK PLANS

APPROVED - DATE

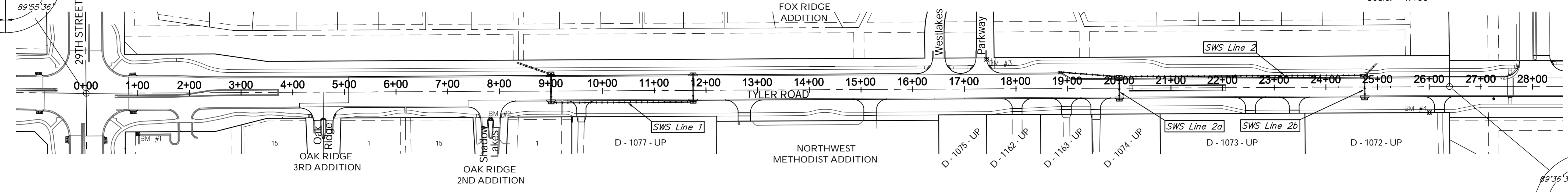
GARY JANZEN, P.E., CITY ENGINEER
CITY OF WICHITA, KANSAS

Drawing File: E:\eng\Tyler\29th to 37th\Title.dwg December 2013

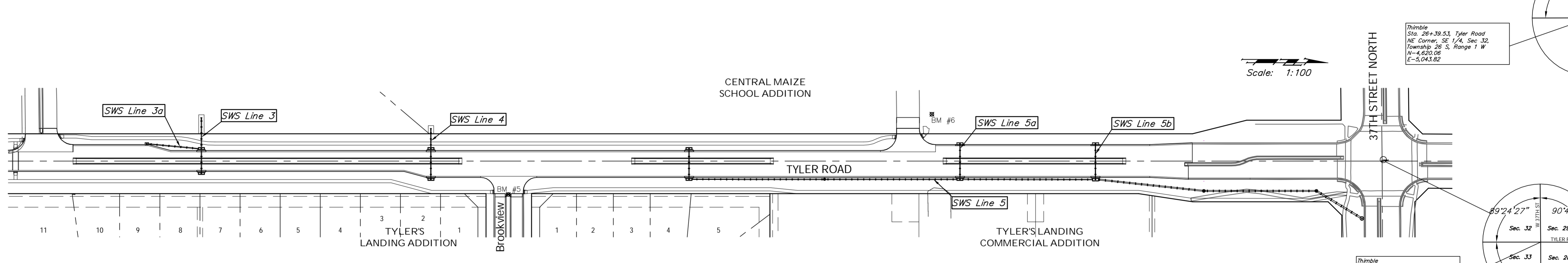
TYLER ROAD STREET IMPROVEMENTS



Scale: 1:100



Scale: 1:100



BENCHMARKS:

- | | |
|--|---|
| <p>BM #1 - "□" Chiseled on Top of Curb at Southwest Corner of Parking Lot at the Northeast Corner of 29th and Tyler
Sta. 1+00, 79' Rt.
Elev. = 1364.07 (NGVD 29)</p> | <p>BM #2 - "□" Chiseled on Top of Curb at West End of Median in Shadow Lakes Interchange
Sta. 7+83, 53' Rt.
Elev. = 1363.41 (NGVD 29)</p> |
| <p>BM #3 - "□" Chiseled on Top of Curb on West Side of Handicap Ramp at the North Side of Entrance to Fox Ridge
Sta. 17+43, 57' Lt.
Elev. = 1367.36 (NGVD 29)</p> | <p>BM #4 - "T" Post Set at Fence Line Next to Brace Post South Side of Entrance to 3320 Tyler Rd
Sta. 26+00, 50' Rt.
Elev. = 1361.08 (NGVD 29)</p> |
| <p>BM #5 - "□" Chiseled on Top of Curb at West End of Median at Brookview Entrance
Sta. 36+66, 62' Rt.
Elev. = 1352.54 (NGVD 29)</p> | <p>BM #6 - "T" Post Set Five Feet South of Maize South School Entrance Sign at the North Side of East Entrance
Sta. 44+48, 86' Lt.
Elev. = 1344.89 (NGVD 29)</p> |
| <p>BM #7 - "□" Chiseled on Top of Curb at West Side of North End of Median
225' North of 37th and Tyler Intersection.
Elev. = 1340.74 (NGVD 29)</p> | <p>BM #8 - "□" Chiseled on Top of South End of RCP on East Side of Tyler Between R.R. Tracks and K-96
2000' North of Intersection of 37th and Tyler
Elev. = 1340.74 (NGVD 29)</p> |

Drawing File: E:\eng\Tyler\29th to 37th\Land\dwg\Tyler Base.dwg (KeySheet)
Design: TPV
Drawn: STAFF
Approved: TPV
Scale: 1" = 100'

Project No. 0802E057 CAPITAL IMPROVEMENT PROJECT

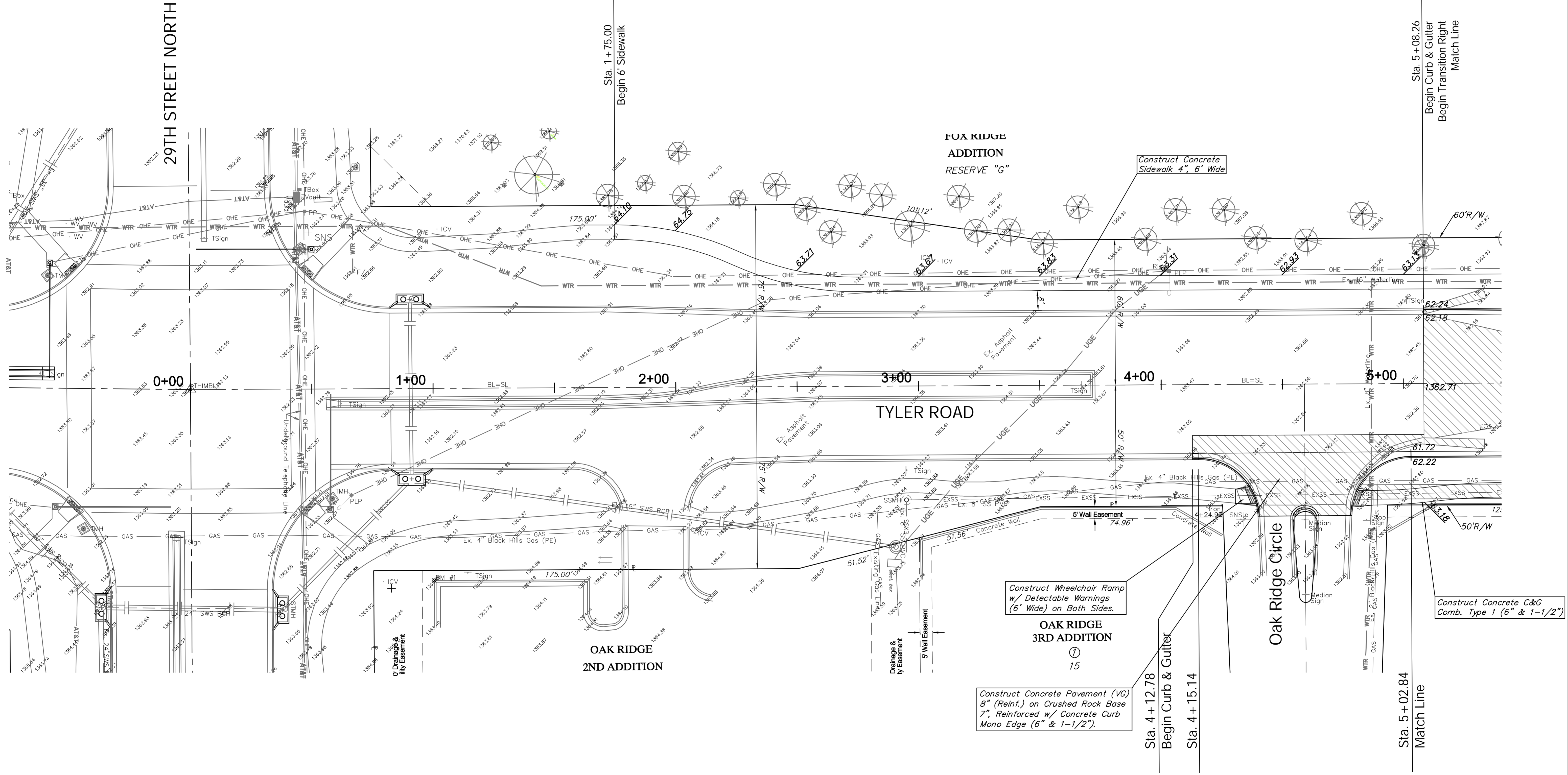
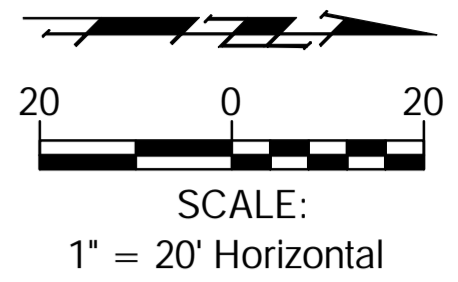
PROJECT KEYSHEET

TYLER ROAD PAVING - W 29TH ST N TO W 37TH ST N

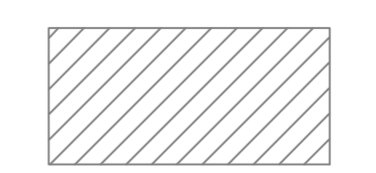
Baughman Company, P.A.
315 Ellis St., Wichita, KS 67211 P 316.262.7271 F 316.262.0149
ENGINEERING | SURVEYING | PLANNING | LANDSCAPE ARCHITECTURE

BENCHMARKS:

BM #1 - "□" Chiseled on Top of Curb at Southwest Corner of Parking Lot at the Northeast Corner of 29th and Tyler
Sta. 1+00, 79' Rt.
Elev. = 1364.07 (NGVD 29)



Note:
Pavement, Sidewalks, Etc.
To Be Removed Are
Indicated By:



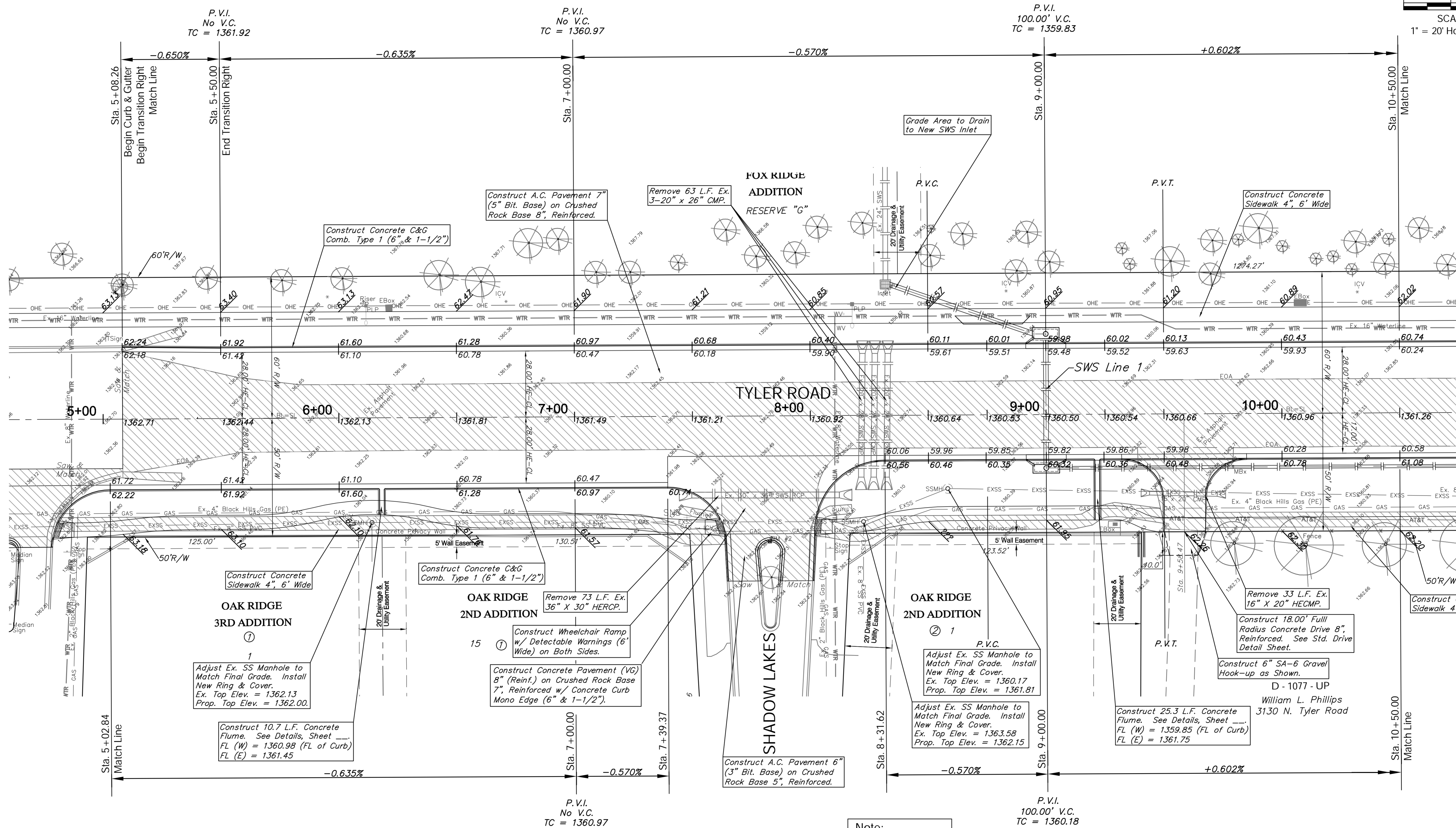
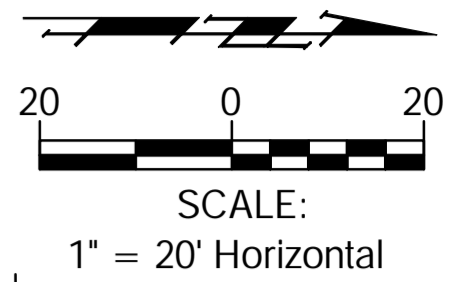
Drawing File: E:\ang\Tyler\29th to 37th\Land\ang\Tyler Base.dwg (Pav01)
Design: ENGINEER
Drawn: STAFF
Approved: ENGINEER
Scale: NOTED

Project No. 0802E057 CAPITAL IMPROVEMENT PROJECT
TYLER ROAD PAVING
Sta. 1 + 75.00 to Sta. 5 + 08.26
TYLER ROAD - 29TH STREET NORTH to 37TH STREET NORTH

Baughman Company, P.A.
315 Ellis St., Wichita, KS 67211 P 316.262.7271 F 316.262.0149
ENGINEERING | SURVEYING | PLANNING | LANDSCAPE ARCHITECTURE

September 2014
SHEET
OF

BENCHMARK:
 BM #2 - "C" Chiseled on Top of Curb at West End of Median in Shadow Lakes Interchange
 Sta. 7+83, 53' Rt.
 Elev. = 1363.41 (NGVD 29)



Note:
 Pavement, Sidewalks, Etc. To Be Removed Are Indicated By:

Design: ENGINEER
 Drawn: STAFF
 Approved: ENGINEER
 Scale: NOTED

Project No. 0802E057 CAPITAL IMPROVEMENT PROJECT
TYLER ROAD PAVING
 Sta. 5+02.85 to Sta. 10+50.00
 TYLER ROAD - 29TH STREET NORTH TO 37TH STREET NORTH

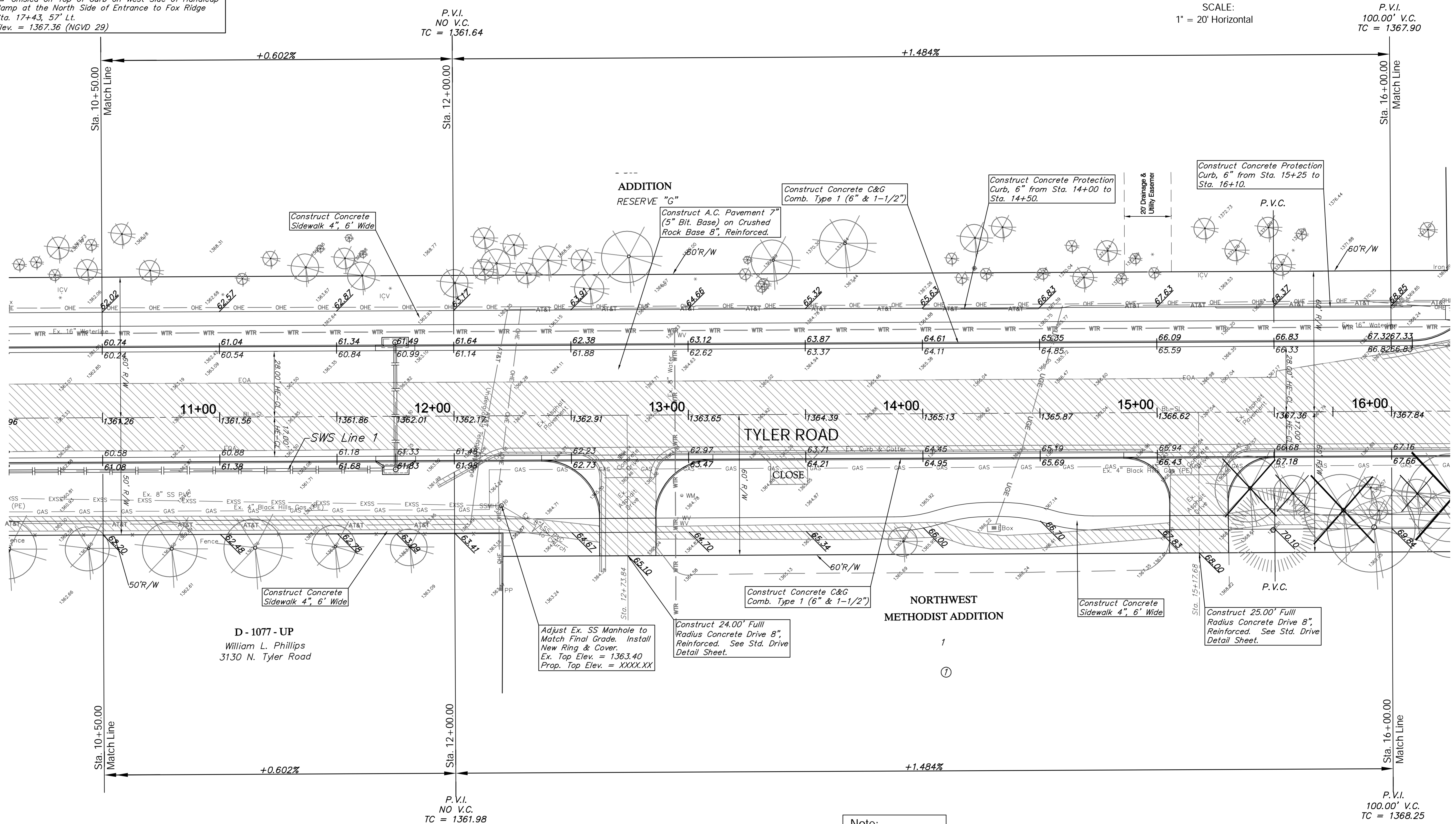
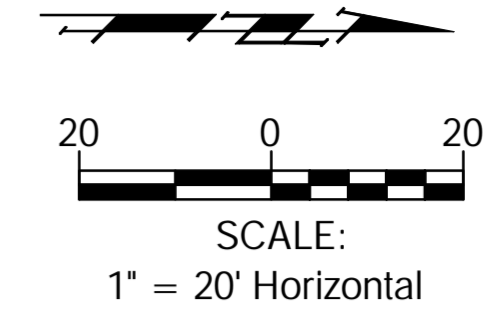
Baughman Company, P.A.
 315 Ellis St., Wichita, KS 67211 P 316.262.7271 F 316.262.0149
 ENGINEERING | SURVEYING | PLANNING | LANDSCAPE ARCHITECTURE

September 2014
 SHEET
 OF

BENCHMARKS:

BM #2 - "C" Chiseled on Top of Curb at West End of Median in Shadow Lakes Interchange
Sta. 7+83, 53' Rt.
Elev. = 1363.41 (NGVD 29)

BM #3 - "C" Chiseled on Top of Curb on West Side of Handicap Ramp at the North Side of Entrance to Fox Ridge
Sta. 17+43, 57' Lt.
Elev. = 1367.36 (NGVD 29)

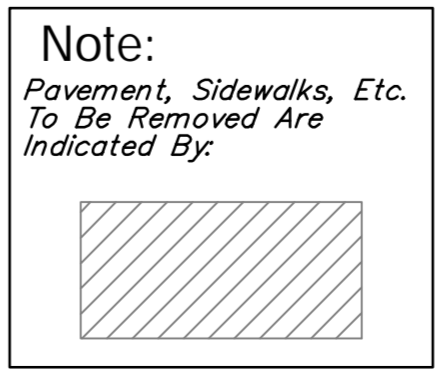
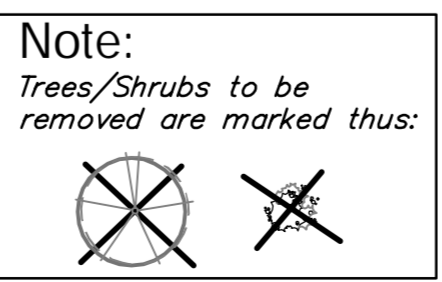


D - 1077 - UP
William L. Phillips
3130 N. Tyler Road

Adjust Ex. SS Manhole to Match Final Grade. Install New Ring & Cover.
Ex. Top Elev. = 1363.40
Prop. Top Elev. = XXXX.XX

Construct 24.00' Full Radius Concrete Drive 8", Reinforced. See Std. Drive Detail Sheet.

Construct 25.00' Full Radius Concrete Drive 8", Reinforced. See Std. Drive Detail Sheet.



Drawing File: E:\ang\Tyler29th to 37th\Land\dwg\Tyler Base.dwg (Pw03)
Project No. 0802E057 CAPITAL IMPROVEMENT PROJECT

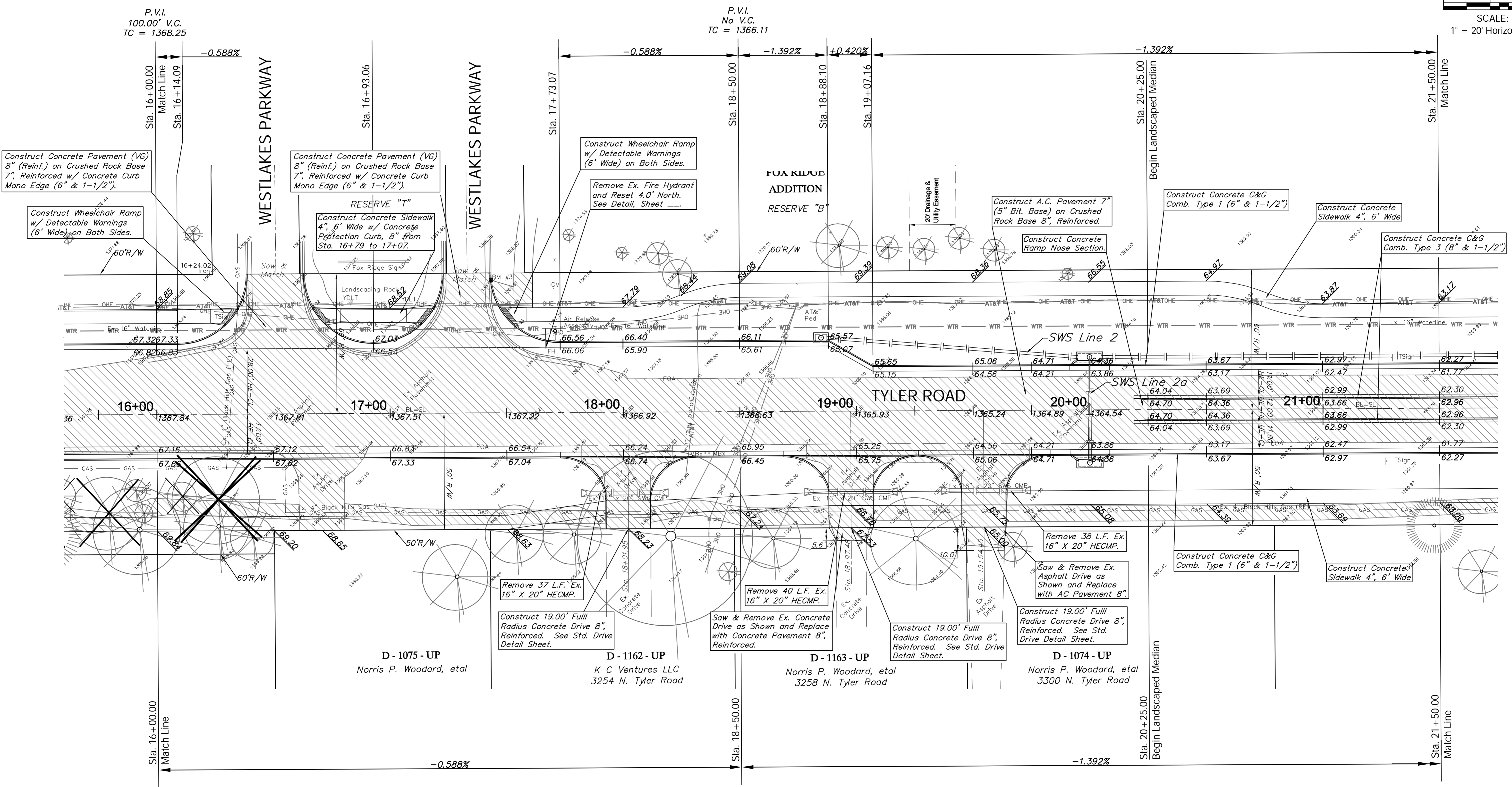
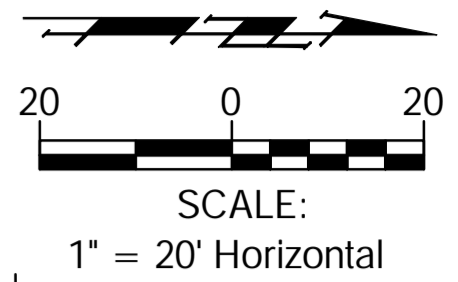
Design: ENGINEER
Drawn: STAFF
Approved: ENGINEER
Scale: NOTED

TYLER ROAD PAVING
Sta. 10+50.00 to Sta. 16+00.00
TYLER ROAD - 29TH STREET NORTH to 37TH STREET NORTH

Baughman Company, P.A.
315 Ellis St., Wichita, KS 67211 P 316.262.7271 F 316.262.0149
ENGINEERING | SURVEYING | PLANNING | LANDSCAPE ARCHITECTURE

September 2014
SHEET OF

BENCHMARK:
 BM #3 - "X" Chisled on Top of Curb on West Side of Handicap Ramp at the North Side of Entrance to Fox Ridge
 Sta. 17+43, 57' Lt.
 Elev. = 1367.36 (NGVD 29)



P.V.I.
100.00' V.C.
TC = 1368.25

P.V.I.
No V.C.
TC = 1366.45

Note:
Trees/Shrubs to be removed are marked thus:

Note:
Pavement, Sidewalks, Etc. To Be Removed Are Indicated By:

D - 1075 - UP
Norris P. Woodard, etal

D - 1162 - UP
K C Ventures LLC
3254 N. Tyler Road

D - 1163 - UP
Norris P. Woodard, etal
3258 N. Tyler Road

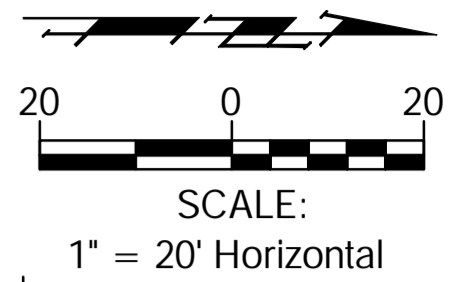
D - 1074 - UP
Norris P. Woodard, etal
3300 N. Tyler Road

Drawing File: E:\ang\Tyler29th to 37th\Land\ang\Tyler Base.dwg [Pw04]
 Project No. 0802E057 CAPITAL IMPROVEMENT PROJECT
TYLER ROAD PAVING
 Sta. 16+00.00 to Sta. 21+50.00
 TYLER ROAD - 29TH STREET NORTH to 37TH STREET NORTH

Baughman Company, P.A.
 315 Ellis St. Wichita, KS 67211 P 316.262.7271 F 316.262.0149
 ENGINEERING | SURVEYING | PLANNING | LANDSCAPE ARCHITECTURE

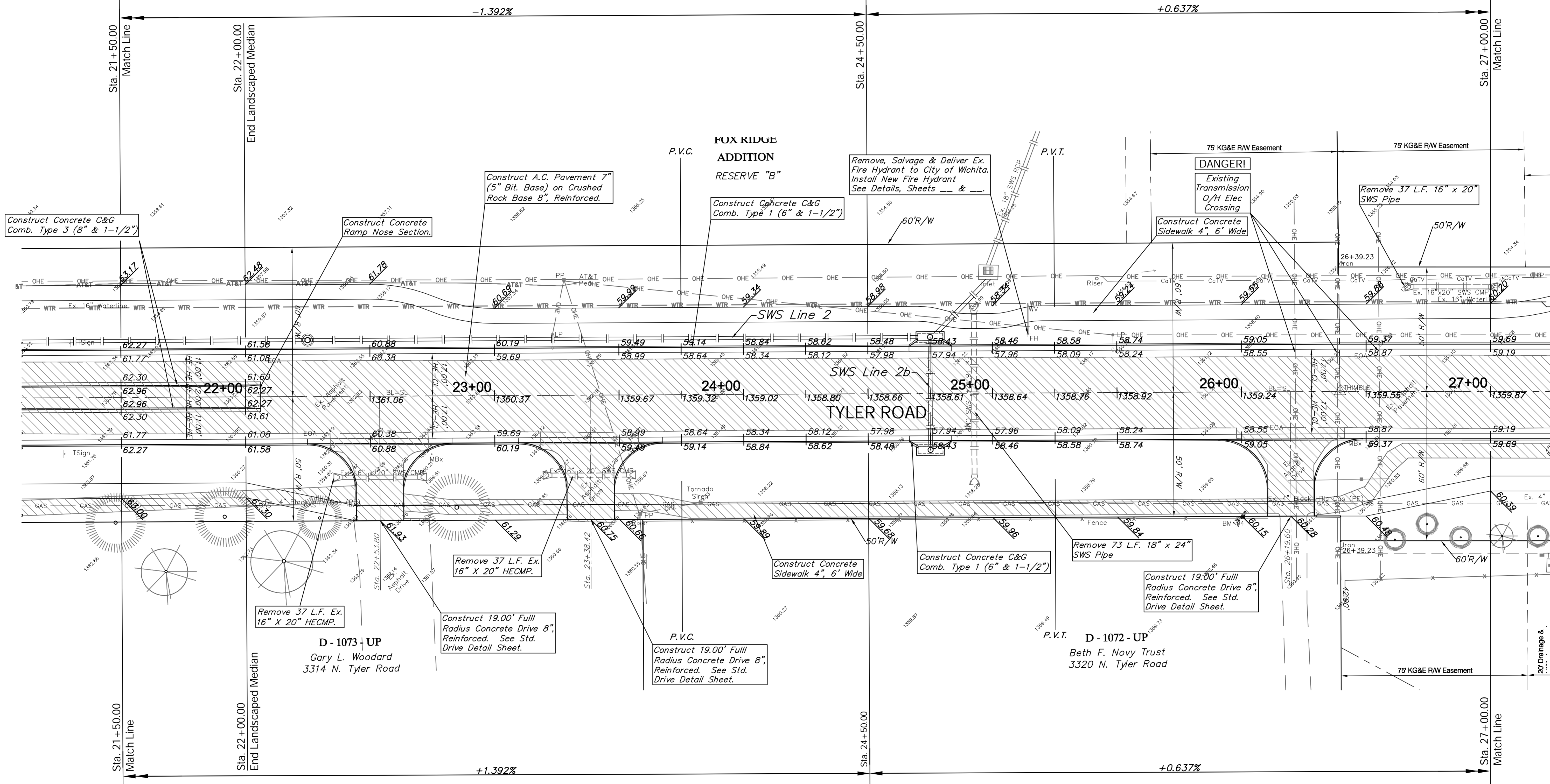
September 2014
 SHEET
 OF

BENCHMARK:
 BM #4 - "T" Post Set at Fence Line Next to Brace Post
 South Side of Entrance to 3320 Tyler Rd
 Sta. 26+00, 50' Rt.
 Elev. = 1361.08 (NGVD 29)



P.V.I.
 150.00' V.C.
 TC = 1358.10

P.V.I.
 150.00' V.C.
 TC = 1358.10



Note:
 Pavement, Sidewalks, Etc.
 To Be Removed Are
 Indicated By:

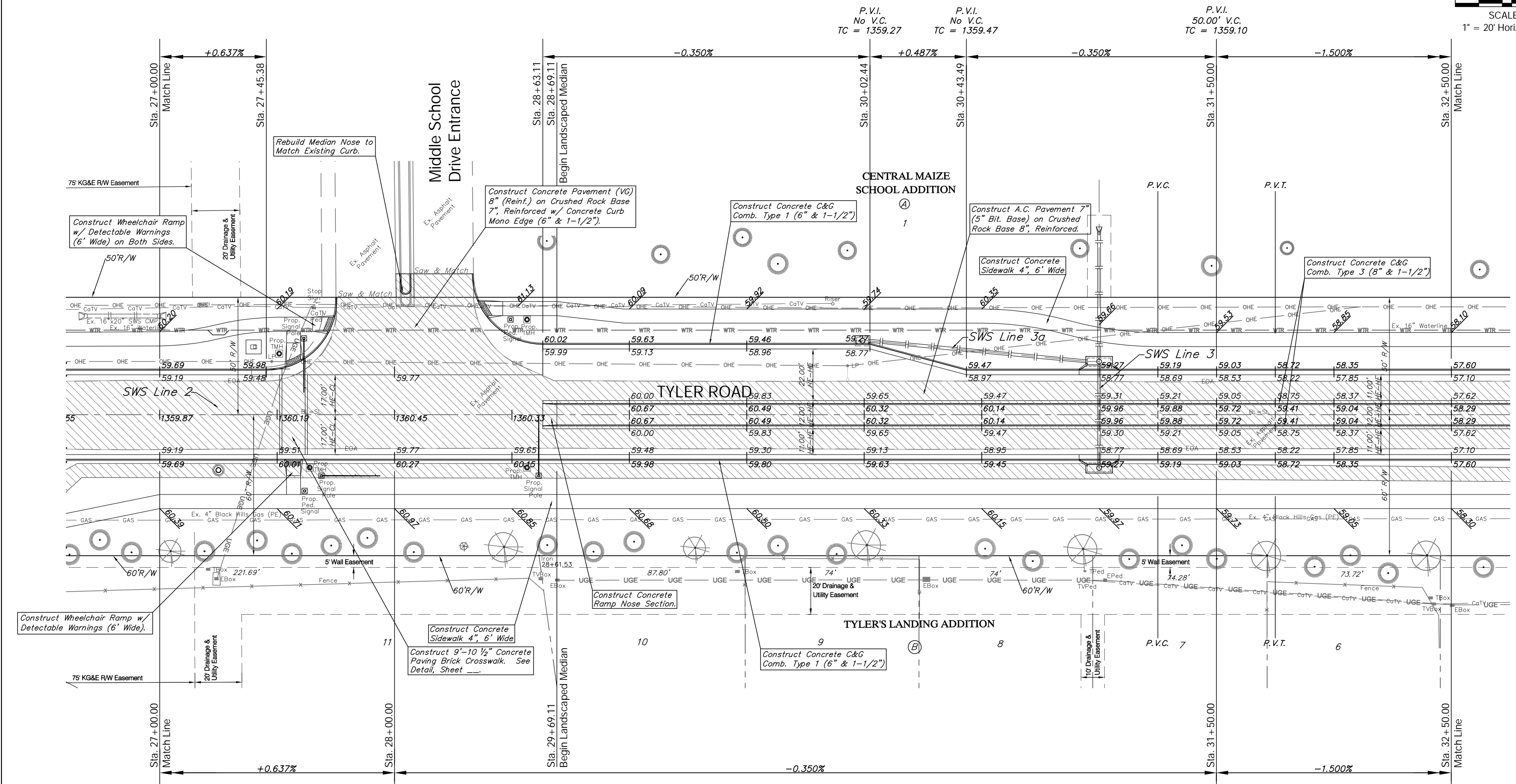
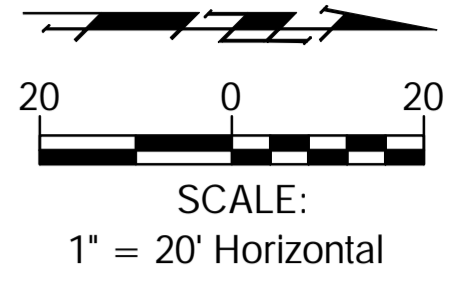
Drawing File: E:\ang\Tyler29th to 37th\Land\dwg\Tyler Base.dwg (Pav05)
 Design: ENGINEER
 Drawn: STAFF
 Approved: ENGINEER
 Scale: NOTED

Project No. 0802E057 CAPITAL IMPROVEMENT PROJECT
TYLER ROAD PAVING
 Sta. 21 + 50.00 to Sta. 27 + 00.00
 TYLER ROAD - 29TH STREET NORTH to 37TH STREET NORTH

Baughman Company, P.A.
 315 Ellis St., Wichita, KS 67211 P 316.262.7271 F 316.262.0149
 ENGINEERING | SURVEYING | PLANNING | LANDSCAPE ARCHITECTURE

September 2014
 SHEET
 OF

BENCHMARK:
 BM #4 - "T" Post Set at Fence Line Next to Brace Post
 South Side of Entrance to 3320 Tyler Rd
 Sta. 26+00, 50' Rt.
 Elev. = 1361.08 (NGVD 29)



Construct Wheelchair Ramp w/ Detectable Warnings (6' Wide).

Rebuild Median Nose to Match Existing Curb.

Construct Concrete Pavement (VG) 8" (Reinf.) on Crushed Rock Base 7", Reinforced w/ Concrete Curb Mono Edge (6" & 1-1/2").

Construct Concrete C&G Comb. Type 1 (6" & 1-1/2").

Construct A.C. Pavement 7" (5" Bit. Base) on Crushed Rock Base 8", Reinforced.

Construct Concrete Sidewalk 4", 6" Wide

Construct Concrete C&G Comb. Type 3 (8" & 1-1/2")

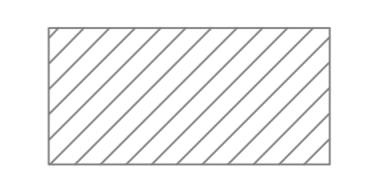
Construct Concrete Ramp Nose Section.

Construct Concrete Sidewalk 4", 6" Wide

Construct 9"-10 1/2" Concrete Paving Brick Crosswalk. See Detail, Sheet ...

Construct Concrete C&G Comb. Type 1 (6" & 1-1/2")

Note:
 Pavement, Sidewalks, Etc. To Be Removed Are Indicated By:

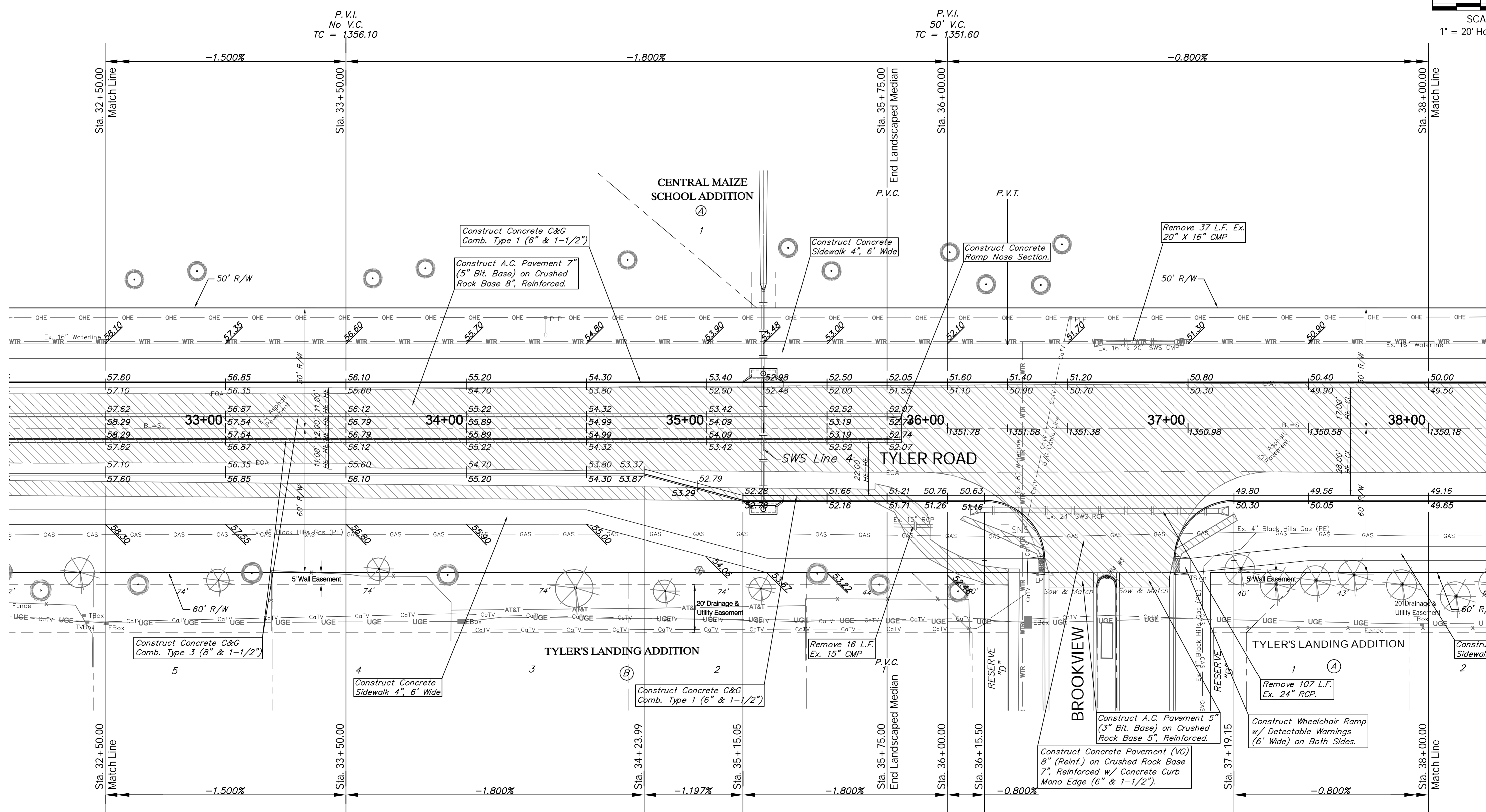
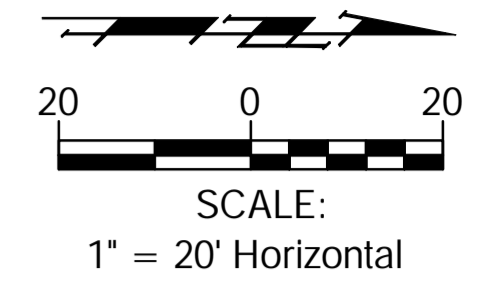


Drawing File: E:\ang\Tyler29th to 37th\Land\dwg\Tyler Base.dwg (Pw06)
 Design: ENGINEER
 Drawn: STAFF
 Approved: ENGINEER
 Scale: NOTED
 Project No. 0802E057 CAPITAL IMPROVEMENT PROJECT
TYLER ROAD PAVING
 Sta. 27 + 00.00 to Sta. 32 + 50.00
 TYLER ROAD - 29TH STREET NORTH to 37TH STREET NORTH

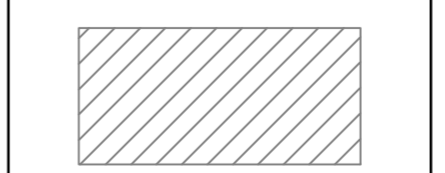
Baughman Company, P.A.
 315 Ellis St. Wichita, KS 67211 P 316.262.7271 F 316.262.0149
 ENGINEERING | SURVEYING | PLANNING | LANDSCAPE ARCHITECTURE

September 2014
 SHEET
 OF

BENCHMARK:
 BM #5 - "□" Chiseled on Top of Curb at West End of Median
 at Brookview Entrance
 Sta. 36+66, 62' Rt.
 Elev. = 1352.54 (NGVD 29)



Note:
 Pavement, Sidewalks, Etc.
 To Be Removed Are
 Indicated By:

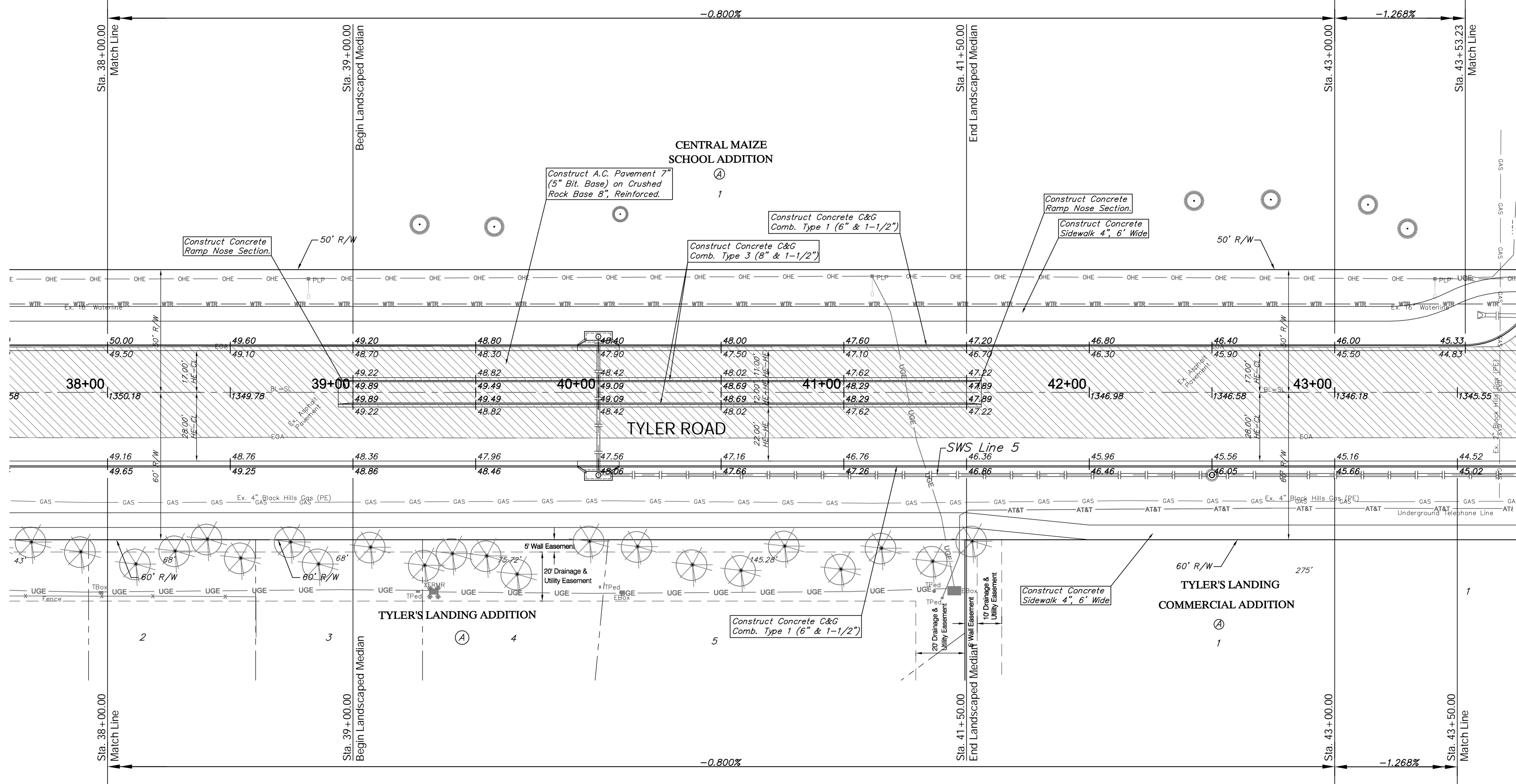
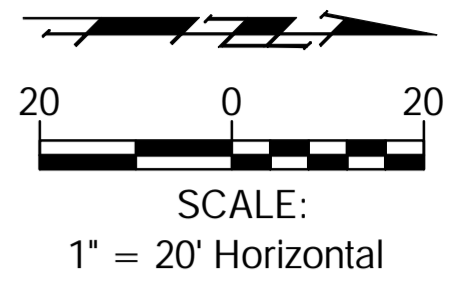


Drawing File: E:\ang\Tyler\29th to 37th\Land\ang\Tyler Base.dwg (Pw07)
 Design: ENGINEER
 Drawn: STAFF
 Approved: ENGINEER
 Scale: NOTED
 Project No. 0802E057 CAPITAL IMPROVEMENT PROJECT
TYLER ROAD PAVING
 Sta. 32 + 50.00 to Sta. 38 + 00.00
 TYLER ROAD - 29TH STREET NORTH to 37TH STREET NORTH

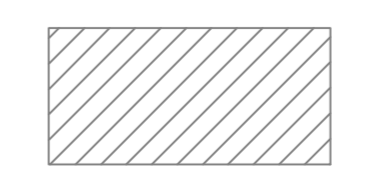
Baughman Company, P.A.
 315 Ellis St., Wichita, KS 67211 P 316.262.7271 F 316.262.0149
 ENGINEERING | SURVEYING | PLANNING | LANDSCAPE ARCHITECTURE

September 2014
 SHEET
 OF

BENCHMARK:
 BM #5 - "□" Chiseled on Top of Curb at West End of Median at Brookview Entrance Sta. 36+66, 62' Rt. Elev. = 1352.54 (NGVD 29)
 BM #6 - "T" Post Set Five Feet South of Maize South School Entrance Sign at the North Side of East Entrance Sta. 44+48, 86' Lt. Elev. = 1344.89 (NGVD 29)



Note:
 Pavement, Sidewalks, Etc. To Be Removed Are Indicated By:



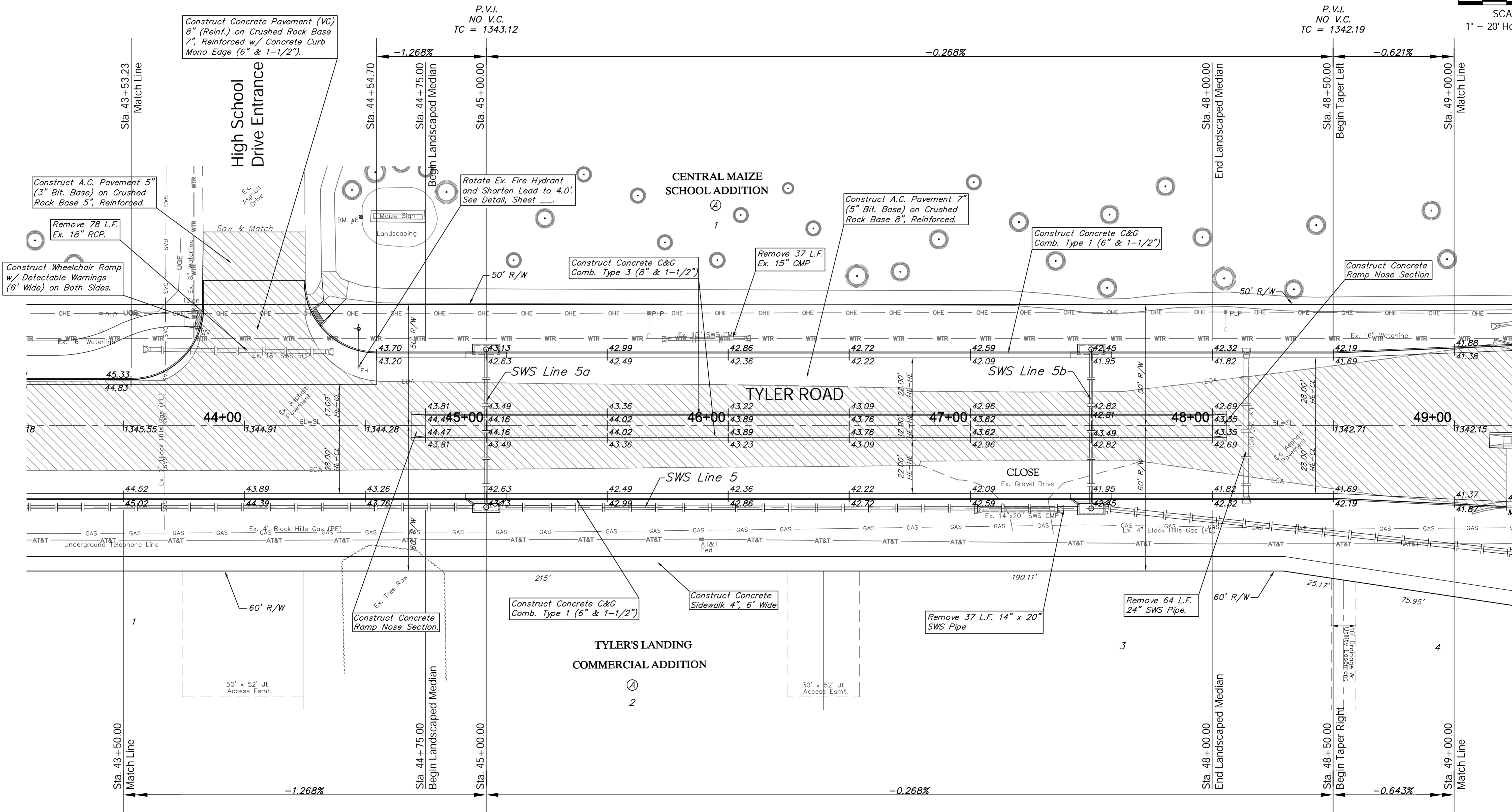
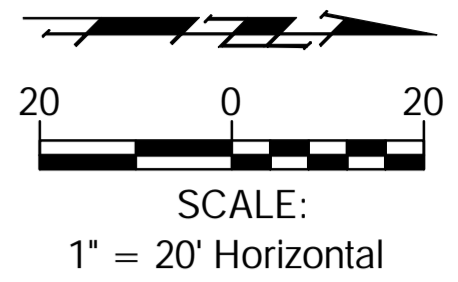
Drawing File: E:\eng\Tyler\29th to 37th\Land\tyler Base.dwg (Pav08)
 Design: ENGINEER
 Drawn: STAFF
 Approved: ENGINEER
 Scale: NOTED

Project No. 0802E057 CAPITAL IMPROVEMENT PROJECT
TYLER ROAD PAVING
 Sta. 38 + 00.00 to Sta. 43 + 50.00
 TYLER ROAD - 29TH STREET NORTH to 37TH STREET NORTH

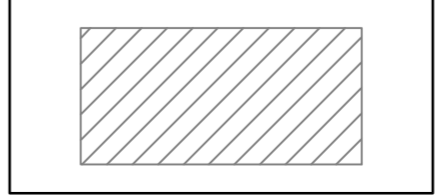
Baughman Company, P.A.
 315 Ellis St., Wichita, KS 67211 P 316.262.7271 F 316.262.0149
 ENGINEERING | SURVEYING | PLANNING | LANDSCAPE ARCHITECTURE

September 2014
 SHEET
 OF

BENCHMARK:
 BM #6 - "T" Post Set Five Feet South of Maize South School Entrance Sign at the North Side of East Entrance Sta. 44+48, 86' Lt. Elev. = 1344.89 (NGVD 29)



Note:
 Pavement, Sidewalks, Etc. To Be Removed Are Indicated By:



Drawing File: E:\ang\Tyler29th to 37th\Land\ang\Tyler Base.dwg (Pav09)
 Project No. 0802E057 CAPITAL IMPROVEMENT PROJECT
TYLER ROAD PAVING
 Sta. 43 + 50.00 to Sta. 49 + 00.00
 TYLER ROAD - 29TH STREET NORTH to 37TH STREET NORTH

Baughman Company, P.A.
 315 Ellis St. Wichita, KS 67211 P 316.262.7271 F 316.262.0149
 ENGINEERING | SURVEYING | PLANNING | LANDSCAPE ARCHITECTURE

September 2014
 SHEET
 OF

