

**GENERAL NOTES:**

1. The Contractor shall comply with all applicable safety regulations. All construction shall be completed following current City Standard Specifications and Special Provisions.
2. Contractor will be required to provide notice to utility companies a minimum of seventy-two (72) hours prior to any excavation, as follows:

Kansas One-Call 687-2470

The Contractor must notify the following in case of an emergency:

Cox Communications 260-7204  
 Kansas Gas Service 1-888-482-4950  
 Phillips 66 Pipeline 1-918-661-5535  
 Westar 383-8600  
 AT&T 1-800-286-8313  
 City of Wichita Water Department 262-6000  
 City of Wichita Sewer Maintenance 262-6000

3. Utility service lines, poles, etc. are to be adjusted as necessary by others prior to construction unless the plans specifically call for their adjustment by the Contractor or unless the plans specifically identify a utility to be adjusted by its owner during construction. Existing utilities and their location, as shown on the plans, represent the best information obtainable for design. The Contractor will be required to work around existing utilities within the right-of-way which do not conflict with proposed construction.

4. Rubble from the removal of miscellaneous structures and excess excavation which is to be wasted shall be disposed of on sites to be provided by the Contractor. These sites shall be approved by the Engineer as to suitability, appearance and site location. Locations, in the opinion of the Engineer, that will leave an unsightly appearance will not be approved. All disposal sites must be approved by the Kansas Department of Health and Environment. Material either stockpiled or disposed of in a flood plain will require a Kansas State Board of Agriculture permit. Any material dumped in waters of the United States or wetlands is subject to U.S. Corps of Engineers permitting regulations. Any material buried or stockpiled beyond approved construction limits will require additional archaeological investigations unless buried in a previously approved borrow location.

5. Trees and shrubs in public right-of-way which are in direct conflict with proposed new construction shall be removed by the Contractor with the Engineer's approval. Trees and shrubs which are not in direct conflict with proposed new construction shall be saved and protected from damage.

6. The Contractor shall give all property owners and/or tenants of developed property abutting the construction of this project a minimum of ten (10) days notice prior to start of construction.

7. The Contractor shall be responsible for preserving property irons. The Contractor will be required to re-establish any property irons which are damaged or destroyed by his construction operations. Such irons shall be re-established by a licensed land surveyor in accordance with state laws.

8. If traffic will be impacted by construction, a traffic control plan must be submitted and approved by the City Traffic Engineer, Brian Coon at [traffic@wichita.gov](mailto:traffic@wichita.gov) before construction can begin. The Contractor shall be responsible for all traffic control measures to facilitate construction. All construction zone markings and signage shall conform to the latest version of the Manual on Uniform Traffic Control Devices (MUTCD) as published by the US Dept. of Transportation, Federal Highway Administration. All costs associated with construction markings and signage shall be the Contractors responsibility.

10. All elevations shown are NAVD 88.

11. The Contractor shall seed, fertilize and mulch all disturbed areas upon completion of construction. Areas within 15' of roadways and easements shall be seeded with fescue. All other areas shall be seeded with annual ryegrass.

12. The Contractor shall protect from damage and support existing utilities through constructions as approved by the utility owner and the Engineer at the contractors expense.

13. Contractor shall limit the extent of trench openings overnight and weekends to less than 50 feet.

14. Any sidewalk, drive approach, curb, or street pavement removed to construct project must have a pavement cut permit and be replaced by the City contractor. Permits can be obtained by calling 316-268-4501 or 316-268-4480.

15. Excess soil shall remain onsite. See Stockpile Areas on Sht. No. 3.

16. All trees shown to be removed on Sht. No. 2 shall be removed prior to April 30, 2015.

17. All trash, debris, trees, structures and other miscellaneous items within the grading limits shall be removed by the stormwater contractor. Incidental to Site Clearing.

**Benchmarks**

BENCHMARK: CHISELED SQUARE ON THE TOP OF CURB ON THE NORTH SIDE OF ZIMMERLY STREET, WEST OF 127TH STREET EAST, ELEVATION = 1329.39 (NAVD88)

# STORM WATER DRAIN 395

to serve

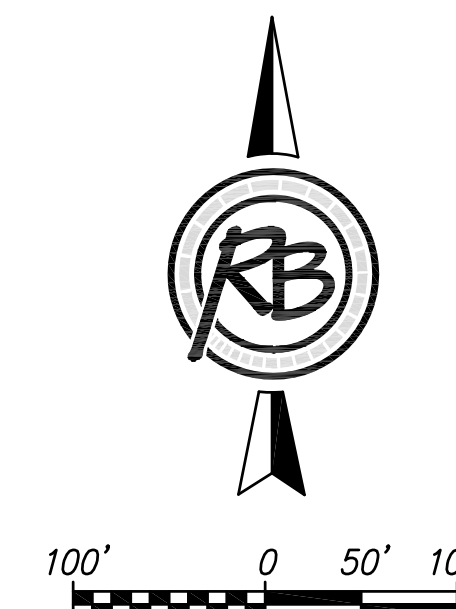
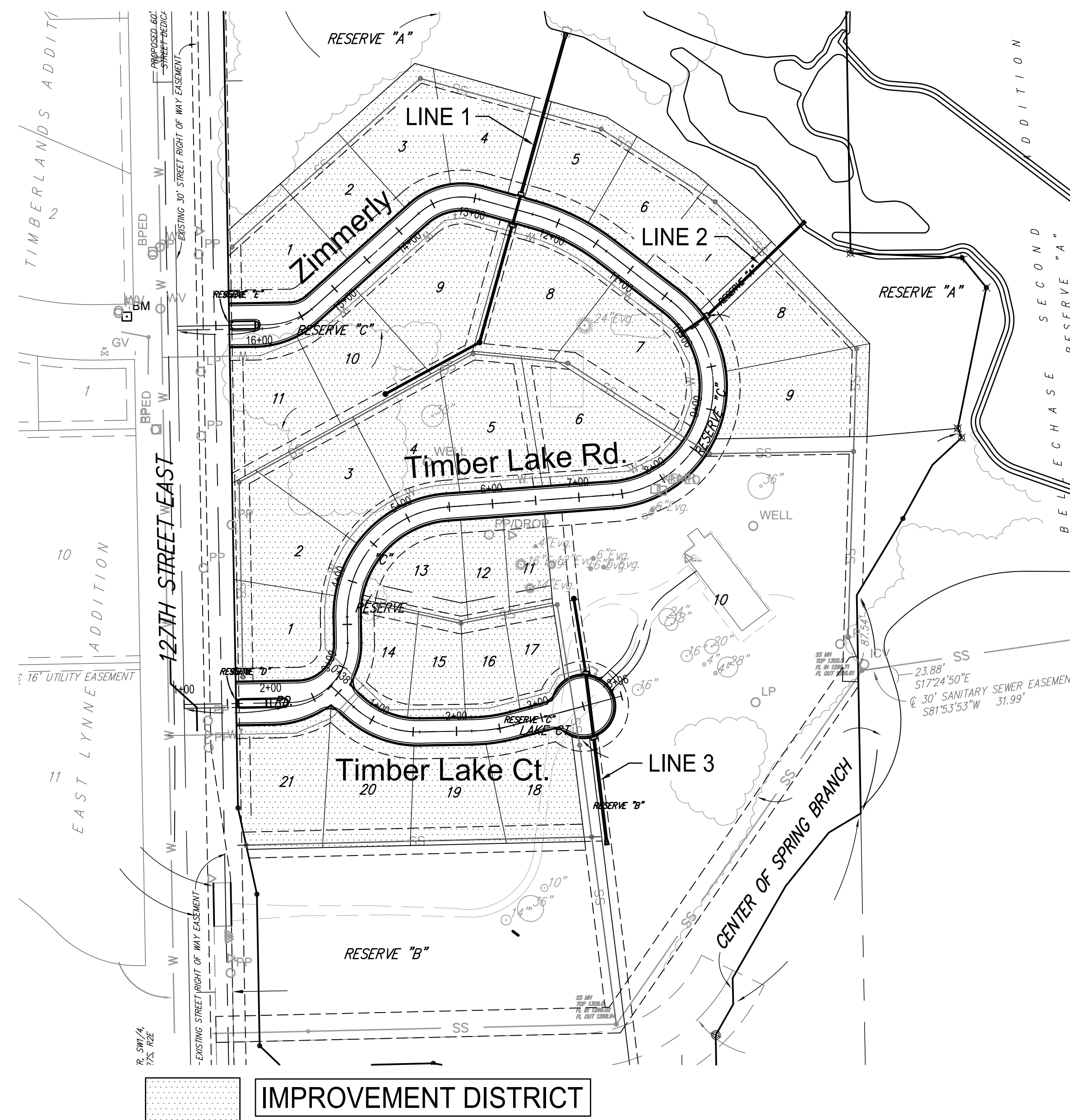
## The Steppes at Ark Valley

### CITY OF WICHITA, KANSAS

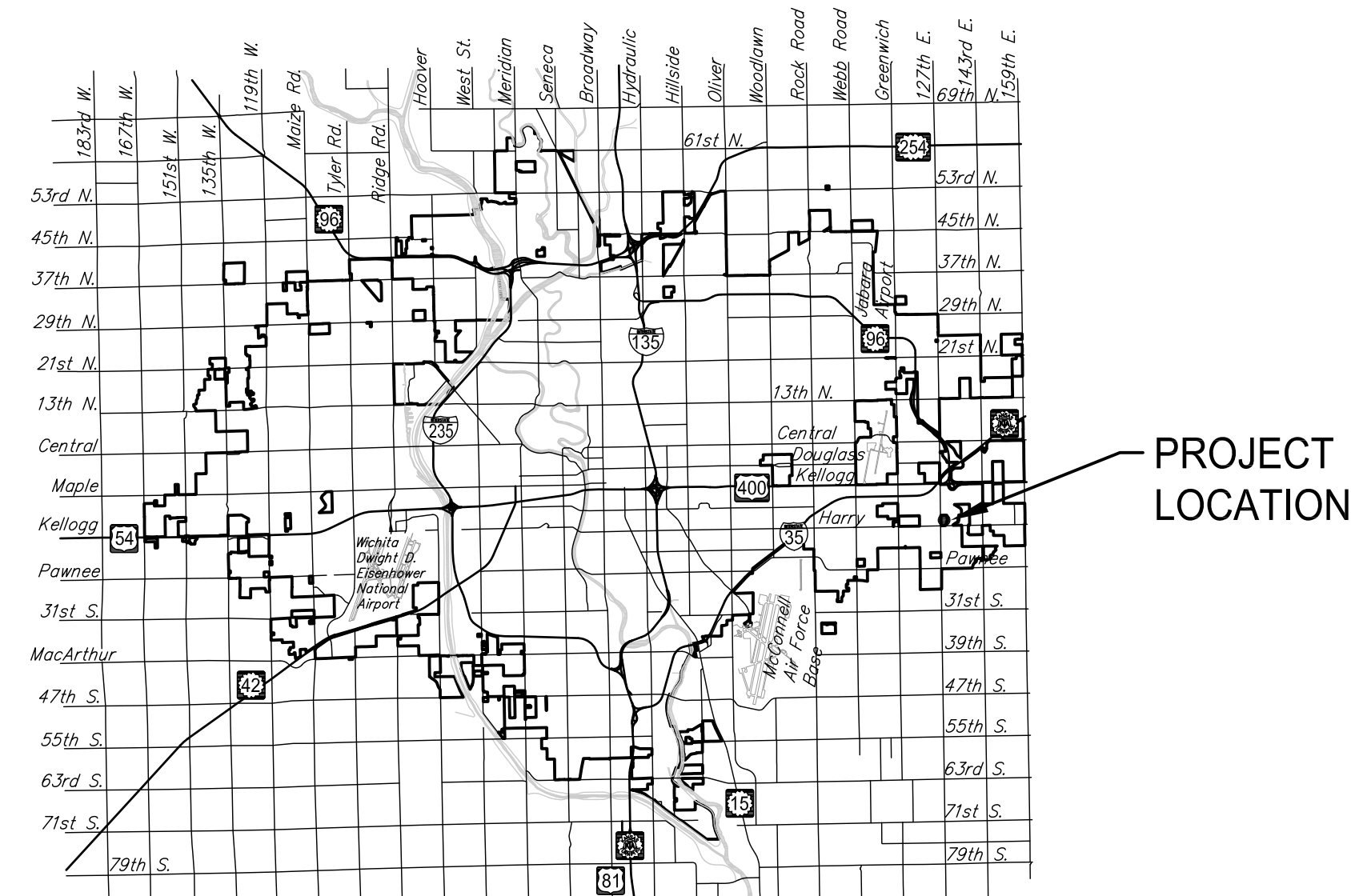
Gary Janzen, P.E. City Engineer  
 Project Number 468-84980  
 O.C.A. NO. 751529

**Sheet Index**

1. TITLE SHEET
2. SITE CLEARING PLAN
- 3-4. GRADING PLAN
5. WEIR DETAILS
- 6-8. PLAN & PROFILES
9. PRECAST MANHOLE DETAILS
10. MH FRAME & COVER DETAILS
11. TYPE 1A CURB INLET DETAILS
12. BACKYARD INLET DETAILS
13. SNOT DETAILS
14. EROSION CONTROL PLAN
- 15-19. EROSION CONTROL DETAILS
20. ADDITION BUBBLE MAP
21. PLAT



**Storm Water Certification:**  
 These construction plans were prepared in accordance with the current Storm Water management regulations as set forth in the City of Wichita's Storm Water management ordinance 16.32 and the policies/guidelines presented in the Wichita/Sedgwick County Storm Water manual.  
 Disturbed Area = 11.2 Acres  
 Water Quality Treatment: Provided by Snout Hoods and by Pond (See Sheet 4)  
 Downstream Channel protection: Provided by pond.  
 Detention Provided by Reserve A Pond Modifications  
 From Drainage Report Approved July 2014



Vicinity Map

