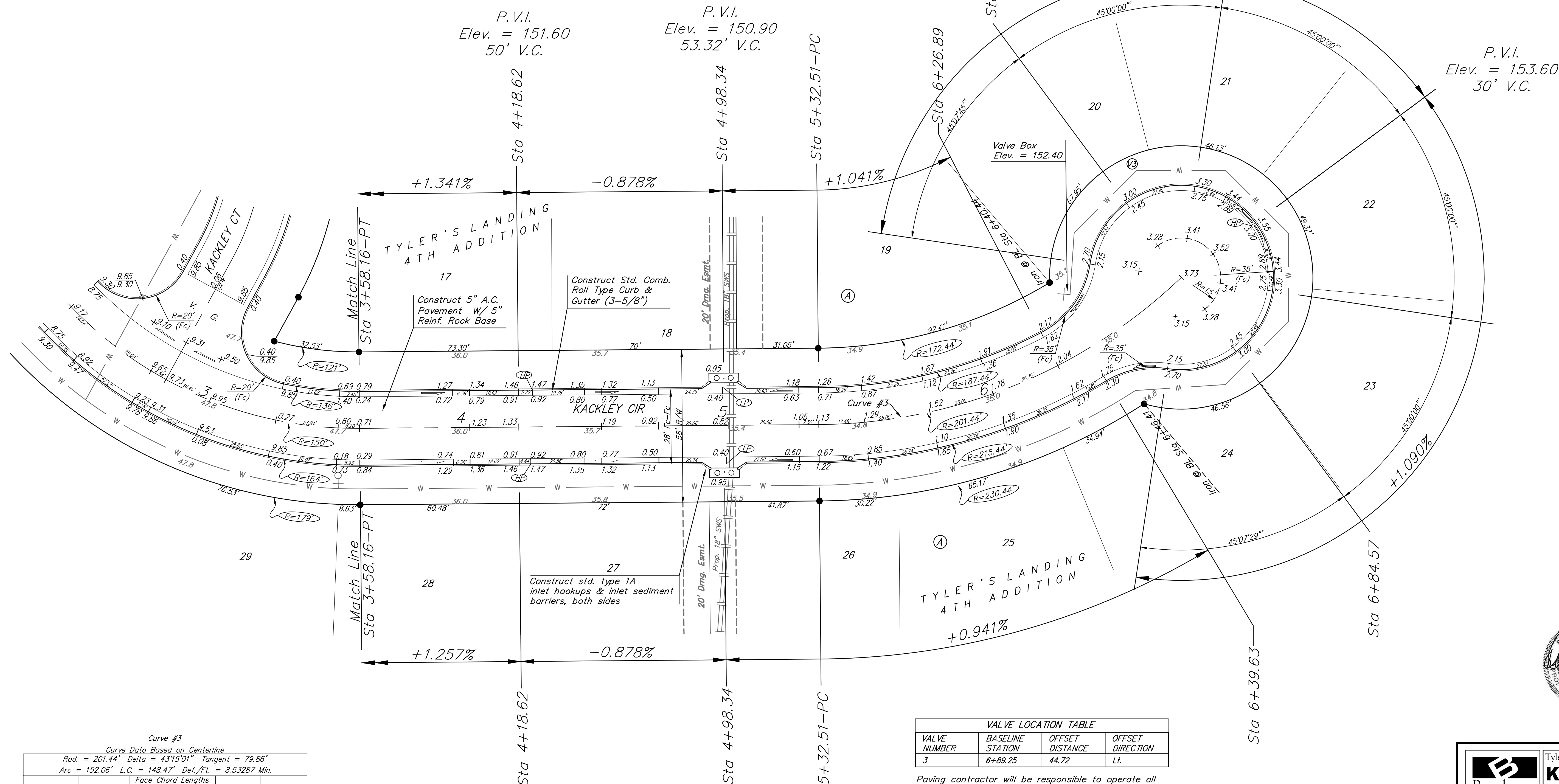


Benchmarks:
 BM #1: "□" Cut in Middle of Curb
 Inlet Top, North Curb of Conrey,
 Adjacent to SW Corner of Lot 14,
 Block A, Tyler's Landing 3rd Addition.
 Elev. = 150.29 City Datum

BM #2: "□" Cut in Top of East Curb
 of High Point, 10' South of End of
 Return. Adjacent to Lot 1, Block D,
 Tyler's Landing Addition.
 Elev. = 155.28 City Datum

Scale: 1" = 20'
 • = Iron



Curve #3
 Curve Data Based on Centerline
 Rad. = 201.44' Delta = 43°15'01" Tangent = 79.86'
 Arc = 152.06' L.C. = 148.47' Def./Ft. = 8.53287 Min.

Station	Arc	Face Chord Lengths		Defl.	Total Defl.
		8' Left	8' Right		
5+32.49	-	-	-	0°00'00"	0°00'00"
5+50.00	17.51'	15.59'	19.42'	2°29'25"	2°29'25"
5+75.00	25.00'	22.26'	27.71'	3°33'19"	6°02'44"
6+00.00	25.00'	22.26'	27.71'	3°33'19"	9°36'03"
6+25.00	25.00'	22.26'	27.71'	3°33'20"	13°09'23"
6+50.00	25.00'	22.26'	27.71'	3°33'19"	16°42'42"
6+75.00	25.00'	22.26'	27.71'	3°33'19"	20°16'01"
6+84.55	9.55'	8.51'	10.59'	1°21'29"	21°37'30"

VALVE LOCATION TABLE

VALVE NUMBER	BASELINE STATION	OFFSET DISTANCE	OFFSET DIRECTION
3	6+89.25	44.72	Lt.

Paving contractor will be responsible to operate all water valves on the project, in the presence of the inspector, to ensure accessibility to the valves, and that all valves are left in the "ON" position when the project is completed.

NOTE: ROLL TYPE CURB & GUTTER TO BE CONSTRUCTED ON THE PAVEMENT SHOWN ON THIS SHEET. TOP OF CURB ELEVATIONS ARE GIVEN FOR FULL HEIGHT CURB.



Baughman Tyler's Landing 4th Addition - Phase 1
Kackley Cir
 STA 3+58.18 TO STA 6+84.57

Baughman Company, P.A. 315 Ellis St. Wichita, KS 67211 P 316-263-7271 F 316-263-0149
 ENGINEERING | SURVEYING | PLANNING | LANDSCAPE ARCHITECTURE

PROJECT NUMBER: 472-84755
 DESIGN: AEG/DMV
 DRAWN: AMH
 APPROVED: DATE: 03/15

REVISIONS:

SCALE: Noted
 SHEET: 8 OF 23

E:\eng\Tyler's Landing 4th Addition\STR\str1.dwg