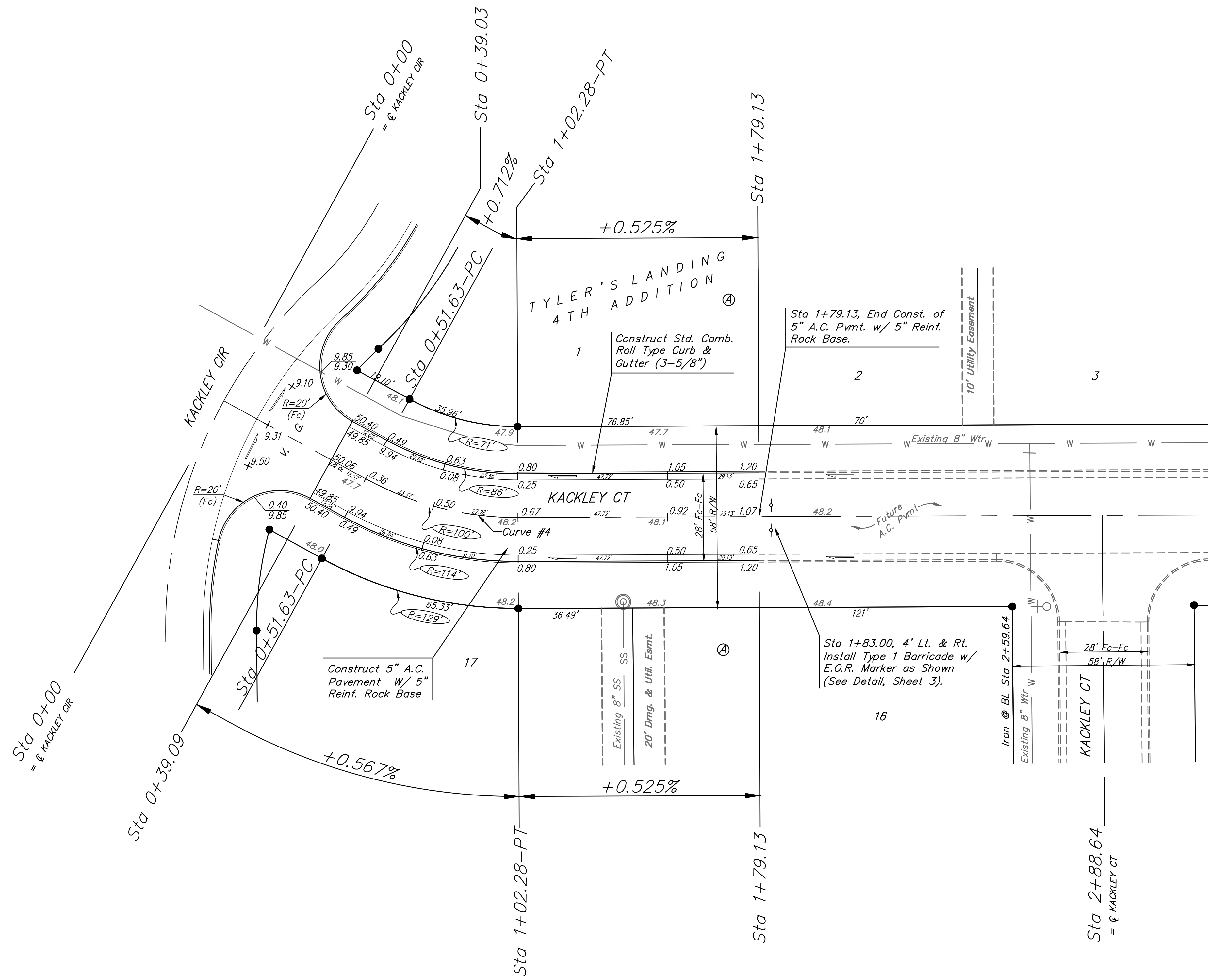


Benchmarks:
 BM #1: "□" Cut in Middle of Curb
 Inlet Top, North Curb of Conrey,
 Adjacent to SW Corner of Lot 14,
 Block A, Tyler's Landing 3rd Addition.
 Elev. = 150.29 City Datum

BM #2: "□" Cut in Top of East Curb
 of High Point, 10' South of End of
 Return. Adjacent to Lot 1, Block D,
 Tyler's Landing Addition.
 Elev. = 155.28 City Datum

Scale: 1" = 20'
 • = Iron

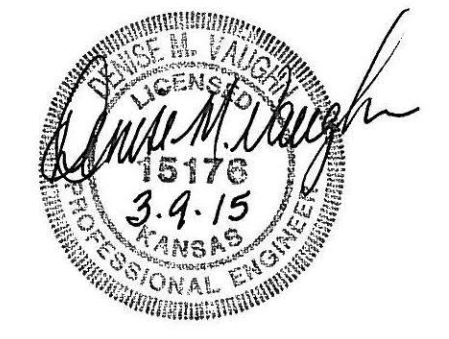


Curve #4

Curve Data Based on Centerline
 Rad. = 100' Delta = 29°01'07" Tangent = 25.88'
 Arc = 50.64' L.C. = 50.11' Def./Ft. = 17.19112 Min.

Station	Arc	Face Chord Lengths		Defl.	Total Defl.
		B' Left	B' Right		
0+51.63	-	-	-	0°00'00"	0°00'00"
0+75.00	23.37'	18.19'	28.45'	6°41'45"	6°41'45"
1+00.00	25.00'	19.45'	30.42'	7°09'47"	13°51'32"
1+02.27	2.27'	1.77'	2.77'	0°39'01"	14°30'33"

NOTE: ROLL TYPE CURB & GUTTER TO BE CONSTRUCTED ON THE PAVEMENT SHOWN ON THIS SHEET. TOP OF CURB ELEVATIONS ARE GIVEN FOR FULL HEIGHT CURB.



	Tyler's Landing 4th Addition - Phase 1	
	Kackley Ct STA 0+00 TO STA 1+79.13	
<small>Baughman Company, P.A. 315 Ellis St. Wichita, KS 67211 P 316-262-7271 F 316-262-0149 ENGINEERING SURVEYING PLANNING LANDSCAPE ARCHITECTURE</small>		
PROJECT NUMBER 472-84755	DESIGN AEG/DMV	DRAWN AMH
REVISIONS:	APPROVED DATE 03/15	SCALE Noted
		SHEET 9 OF 23
<small>E:\eng\Tyler's Landing 4th Addition\STR\str1.dwg 08-05-E125</small>		