

**Benchmarks:**  
 BM #1: "□" Cut in Middle of Curb Inlet Top, North Curb of Conrey, Adjacent to SW Corner of Lot 14, Block A, Tyler's Landing 3rd Addition. Elev. = 150.29

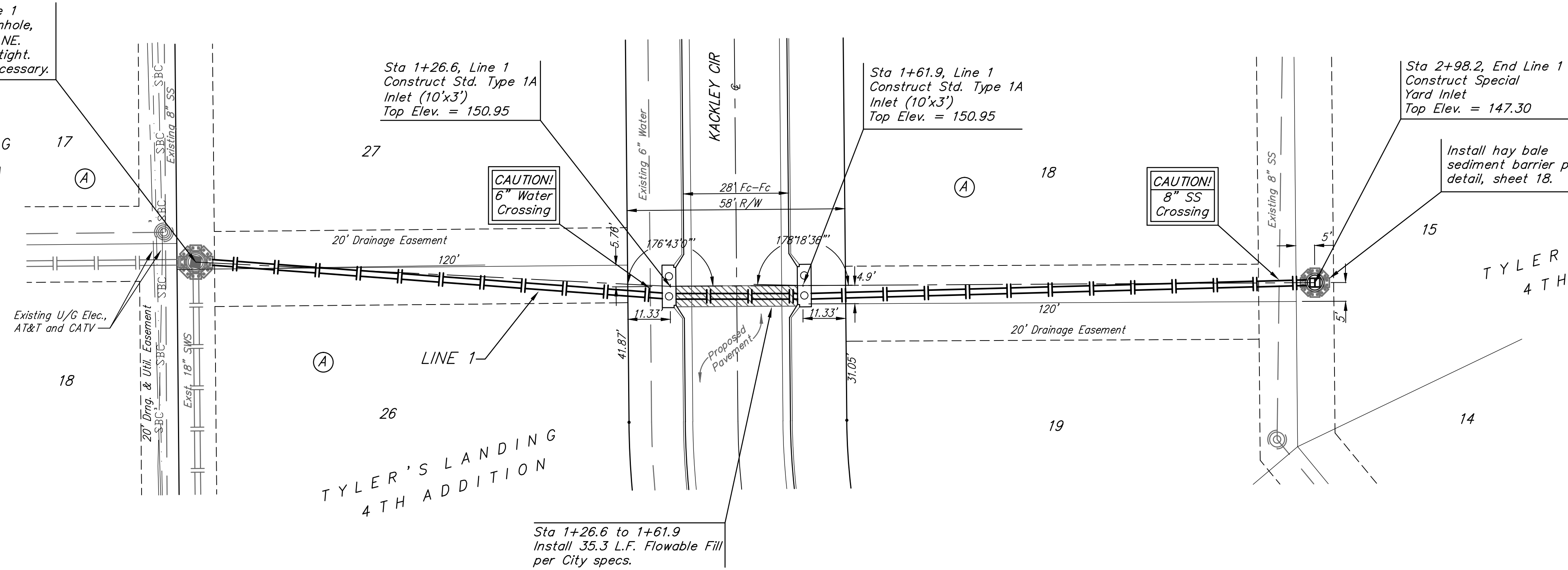
BM #2: "□" Cut in Top of East Curb of High Point, 10' South of End of Return. Adjacent to Lot 1, Block D, Tyler's Landing Addition. Elev. = 155.28

Sta. 0+00, Begin Line 1  
 Core Drill Existing Manhole, And Extend 18" Pipe NE. Grout and Seal Watertight. Reshape Invert as Necessary.

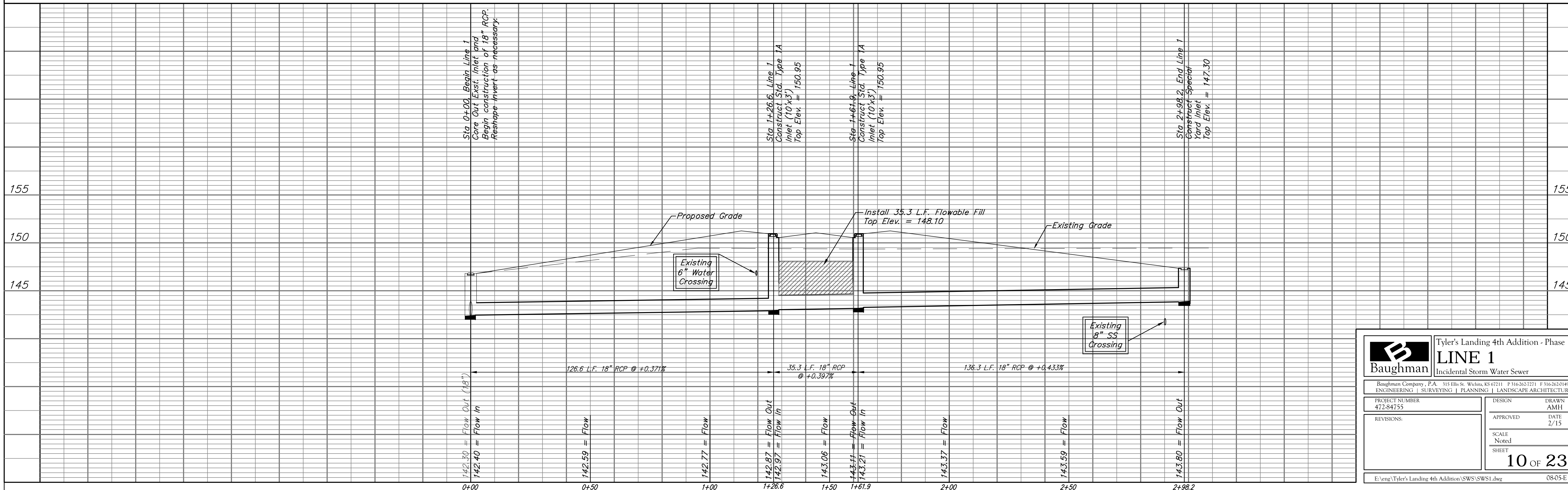
TYLER'S LANDING  
 3RD ADDITION

TYLER'S LANDING  
 4TH ADDITION

Scale: 1" = 20' Horizontal  
 1" = 5' Vertical  
 • = Iron



Sta 1+26.6 to 1+61.9  
 Install 35.3 L.F. Flowable Fill  
 per City specs.



<b>B</b> Baughman		Tyler's Landing 4th Addition - Phase 1	
<b>LINE 1</b>		Incidental Storm Water Sewer	
Baughman Company, P.A. 315 Ellis St. Wichita, KS 67211 P 316-262-2721 F 316-262-0149 ENGINEERING   SURVEYING   PLANNING   LANDSCAPE ARCHITECTURE			
PROJECT NUMBER 472-84755	DESIGN AMH	DRAWN AMH	DATE 2/15
REVISIONS:	APPROVED	SCALE Noted	SHEET 10 OF 23
E:\eng\Tyler's Landing 4th Addition\SWS\SWS1.dwg			08-05-E125