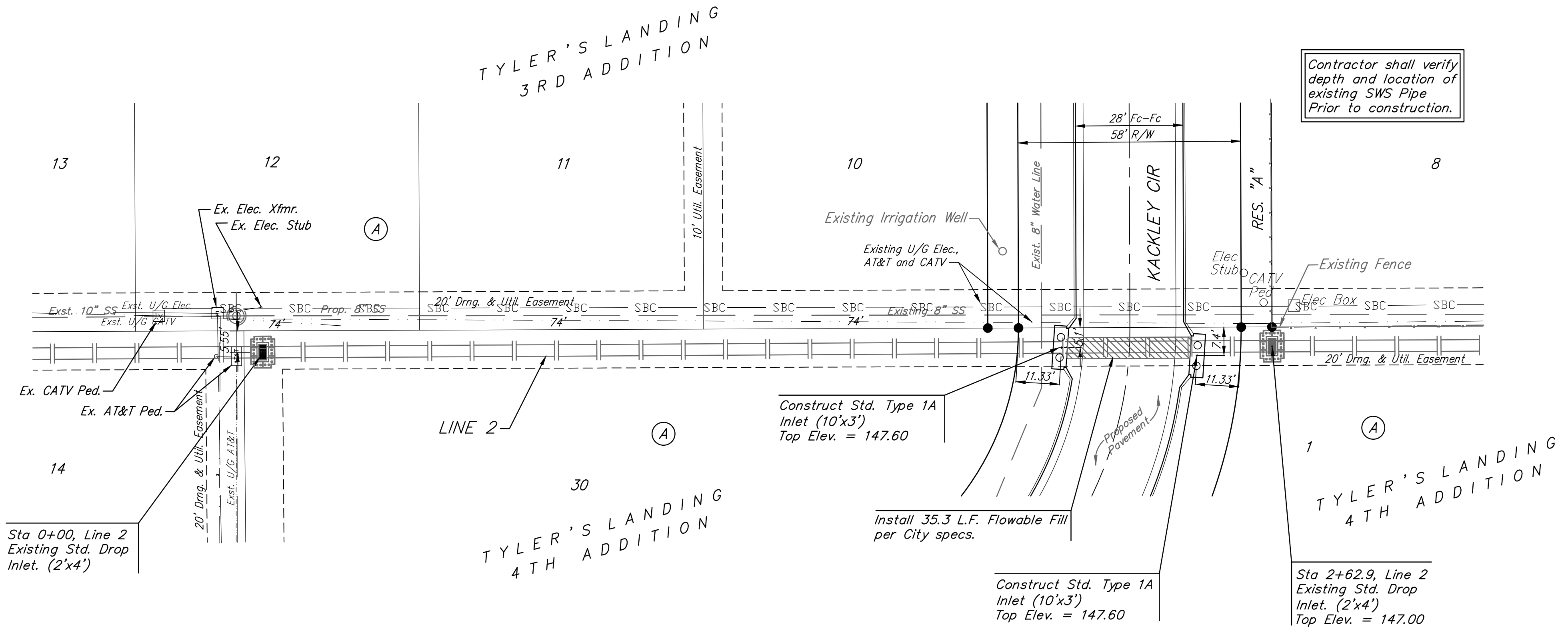


Benchmarks:
 BM #1: "□" Cut in Middle of Curb Inlet Top, North Curb of Conrey, Adjacent to SW Corner of Lot 14, Block A, Tyler's Landing 3rd Addition. Elev. = 150.29

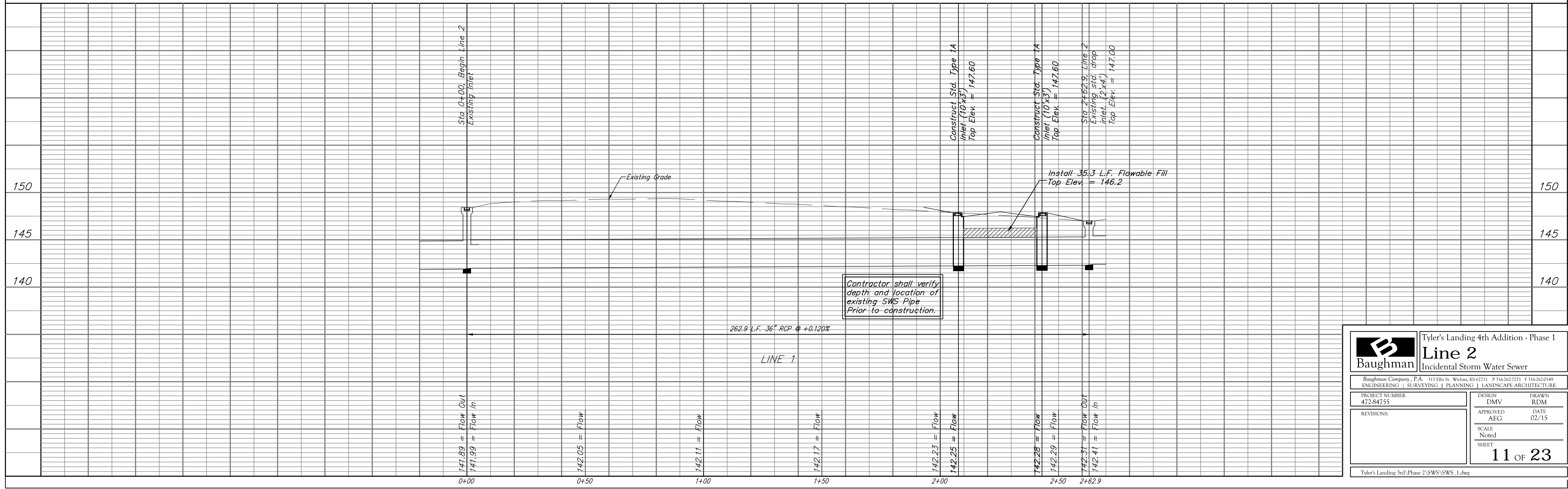
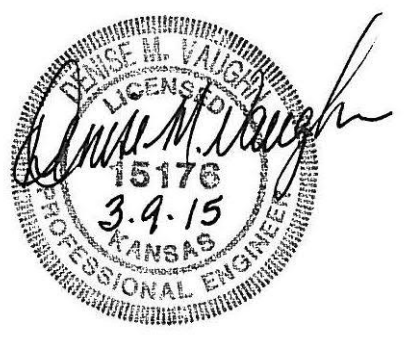
BM #2: "□" Cut in Top of East Curb of High Point, 10' South of End of Return. Adjacent to Lot 1, Block D, Tyler's Landing Addition. Elev. = 155.28



Scale: 1" = 20' Horizontal
 1" = 5' Vertical
 • = Iron



Contractor shall verify depth and location of existing SWS Pipe Prior to construction.



Baughman		Tyler's Landing 4th Addition - Phase 1	
Line 2		Incidental Storm Water Sewer	
Baughman Company, P.A. 315 Ellis St. Wichita, KS 67211 P 316-262-7771 F 316-262-0149 ENGINEERING SURVEYING PLANNING LANDSCAPE ARCHITECTURE			
PROJECT NUMBER 472-84755	DESIGN DMV	DRAWN RDM	DATE 02/15
REVISIONS:	APPROVED AEG	SCALE Noted	SHEET 11 OF 23
Tyler's Landing 3rd Phase 2 SWS(SWS_1.dwg)			