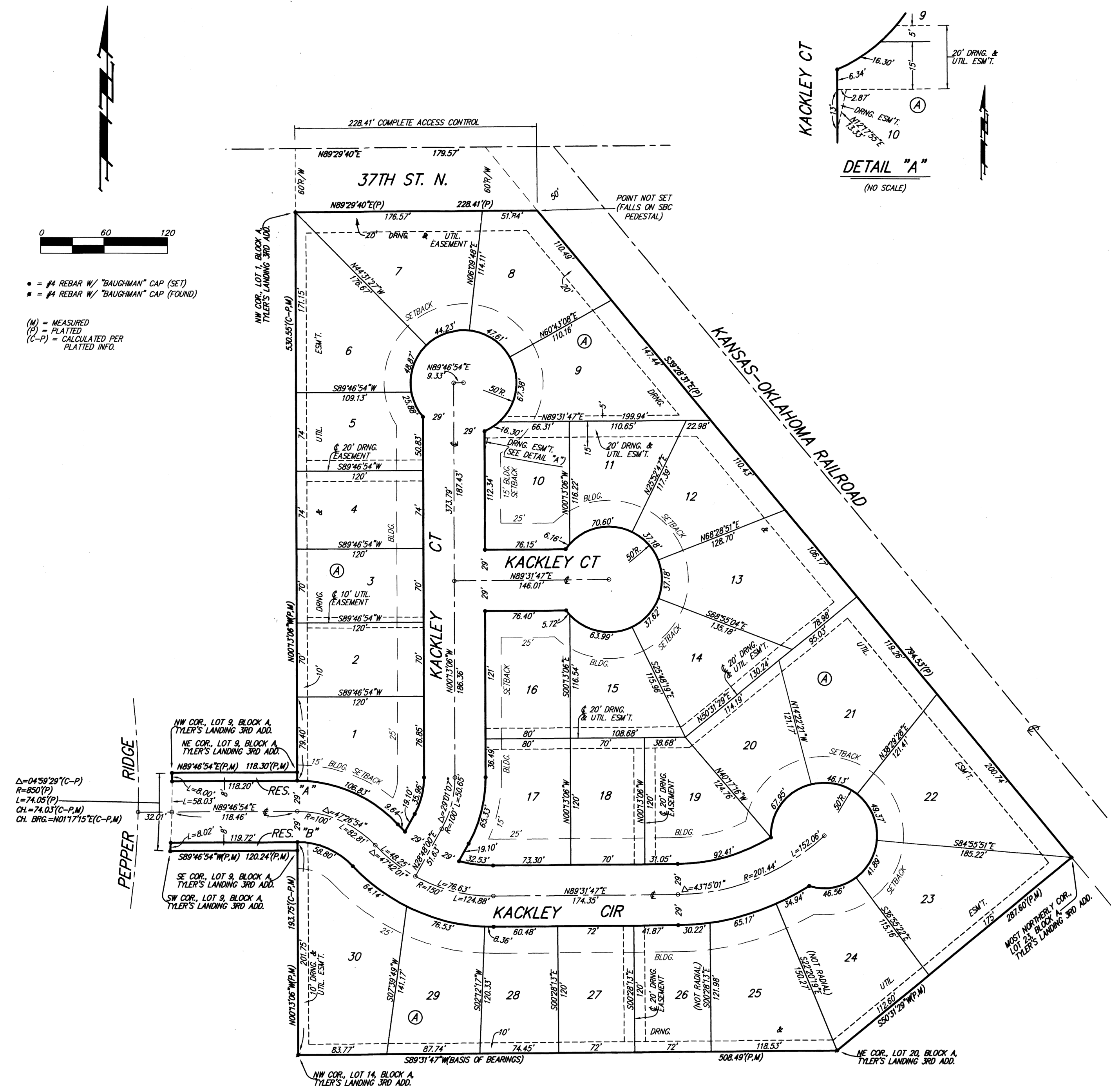


TYLER'S LANDING 4TH ADDITION WICHITA, SEDGWICK COUNTY, KANSAS



• = #4 REBAR W/ "BAUGHMAN" CAP (SET)
• = #4 REBAR W/ "BAUGHMAN" CAP (FOUND)

(M) = MEASURED
(P) = PLATTED
(C-P) = CALCULATED PER PLATTED INFO.

State of Kansas) SS
Sedgwick County) We, Baughman Company, P.A., Surveyors in
aforesaid county and state do hereby certify that we have surveyed and
platted "TYLER'S LANDING 4TH ADDITION", Wichita, Sedgwick County,
Kansas and that the accompanying plat is a true and correct exhibit of
the property surveyed, described as and being a replat of all of Lots 1
and 9, Block A, Tyler's Landing 3rd Addition, Wichita, Sedgwick County,
Kansas.

Existing public easements and dedications
being vacated by virtue of K.S.A. 12-512(b).
All being situated in the NW1/4 of Sec. 33, Twp. 26-S,
R-1-W of the 6th P.M., Sedgwick County, Kansas.

Baughman Company, P.A.

Michael A. Conroy, Surveyor
Michael B. Conroy

Know all men by these presents that we,
the undersigned, have caused the land in the surveyors certificate to be
platted into Lots, a Block, Streets, and Reserves to be known as "TYLER'S
LANDING 4TH ADDITION", Wichita, Sedgwick County, Kansas. The utility
easements are hereby granted as indicated for the construction and
maintenance of all public utilities. The drainage easements are hereby
granted as indicated for drainage purposes. The drainage and utility
easements are hereby granted as indicated for drainage purposes and for
the construction and maintenance of all public utilities. The streets are
hereby dedicated to and for the use of the public. Reserves "A" and "B"
are hereby reserved for open space, utilities, drainage purposes,
landscaping, entry monuments, and berms. Reserves "A" and "B" shall be
owned and maintained by the homeowners association for the addition.
All abutters rights of access to or from 37th St. N. over and across the
north line of Lots 7 and 8, Block A, are hereby granted to the City of
Wichita, Kansas.

R & R Realty, LLC,
a Kansas limited liability company

Jay W. Russell, Manager

Ritchie Associates, Inc., Manager

Rob Ramsey, Vice-President

State of Kansas) SS
Sedgwick County) The foregoing instrument acknowledged before me,
this 19th day of AUGUST, 2008, by Jay W. Russell, Manager of
R & R Realty, LLC, a Kansas limited liability company, on behalf of the
limited liability company.

Judith M. Terhune, Notary Public

My App't. Exp. 11-7-09

State of Kansas) SS
Sedgwick County) The foregoing instrument acknowledged before me,
this 15th day of August, 2008, by Rob Ramsey, Vice-President of
Ritchie Associates, Inc., as Manager of R & R Realty, LLC, a Kansas
limited liability company, on behalf of the limited liability company.

Angie M. Sizemore, Notary Public

My App't. Exp. 7/25/11

We, the undersigned holders of a mortgage on
the above described property, do hereby consent to this plat of "TYLER'S
LANDING 4TH ADDITION", Wichita, Sedgwick County, Kansas.

Legacy Bank

Steve Gegan, VP

State of Kansas) SS
Sedgwick County) The foregoing instrument acknowledged before
me, this 16th day of August, 2008, by Steve Gegan,
VP of Legacy Bank, on behalf of the bank.

Kimberly Barnes, Notary Public

My App't. Exp. 9/7/08

This plat of "TYLER'S LANDING 4TH
ADDITION", Wichita, Sedgwick County, Kansas has been submitted to and
approved by the Wichita-Sedgwick County Metropolitan Area Planning
Commission, Wichita, Kansas.
Dated this 5th day of June, 2008.
Wichita-Sedgwick County Metropolitan Area Planning Commission

M. S. Mitchell, Chair
John L. Schlegel, Secretary

This plat approved and all dedications
shown hereon accepted by the City Council of the City of Wichita,
Kansas, this 2nd day of September, 2008.

Carl Brewer, Mayor
Karen Sublett, City Clerk

Reviewed in accordance with K.S.A. 58-2005
on this 29th day of August, 2008.

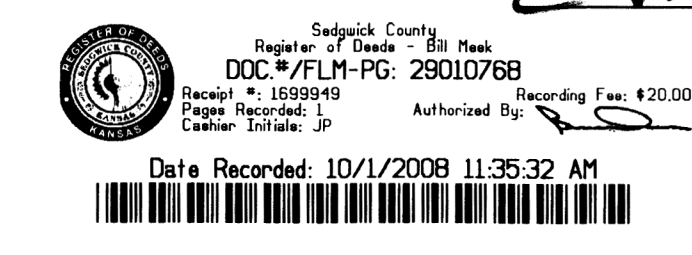
Tricia L. Robello, L.S. #1246
Deputy County Surveyor
Sedgwick County, Kansas

Entered on transfer record this 15th day
of October, 2008.

Don Brace, County Clerk

State of Kansas) SS
Sedgwick County) This is to certify that this plat has been
filed for record in the office of the Register of Deeds, this 13th day
of October, 2008 at 11:35:32 a.m.; and is duly recorded.

Bill Meek, Register of Deeds
Tonya Buckingham, Deputy



Baughman Company, P.A.
315 Ellis St., Wichita, KS 67211 P 316-262-7271 F 316-262-0149
ENGINEERING | SURVEYING | PLANNING | LANDSCAPE ARCHITECTURE