

STORM SEWER IMPROVEMENTS

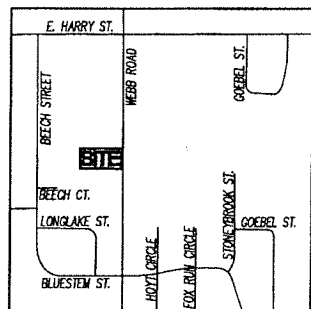
TO SERVE

LOT 2, TRACT 1, CALIENDO 11TH ADDITION PROJECT NO. 0253 PPD (607861)

CITY OF WICHITA, KANSAS

GARY JANZEN, P.E. - CITY ENGINEER

They asked about moving L3 to miss fiber optic line and told them not a problem to just as-built it on plans. TM



LOCATION SKETCH

SEC. 32, T27N, R2E
NOT TO SCALE

CONTRACTOR TO USE EXTREME CAUTION WHEN EXCAVATING NEAR UTILITY LINES. CONTRACTOR TO HAND DIG TO EXPOSE ALL UTILITY LINES PRIOR TO CONSTRUCTION. VERIFY DEPTH TO DETERMINE IF ANY CONFLICT EXISTS.

COORDINATE CONTROL TABLE			
CONTROL NO.	DESCRIPTION	NORTHING	EASTING
①	NE CORNER LOT 2, TRACT 1, CALIENDO 11TH ADDITION	1677372.65	1680995.96
②	SE CORNER LOT 2, TRACT 1, CALIENDO 11TH ADDITION	1677207.67	1680998.50
③	SW CORNER LOT 2, TRACT 1, CALIENDO 11TH ADDITION	1677204.11	1680729.52
④	NW CORNER LOT 2, TRACT 1, CALIENDO 11TH ADDITION	1677369.09	1680726.83

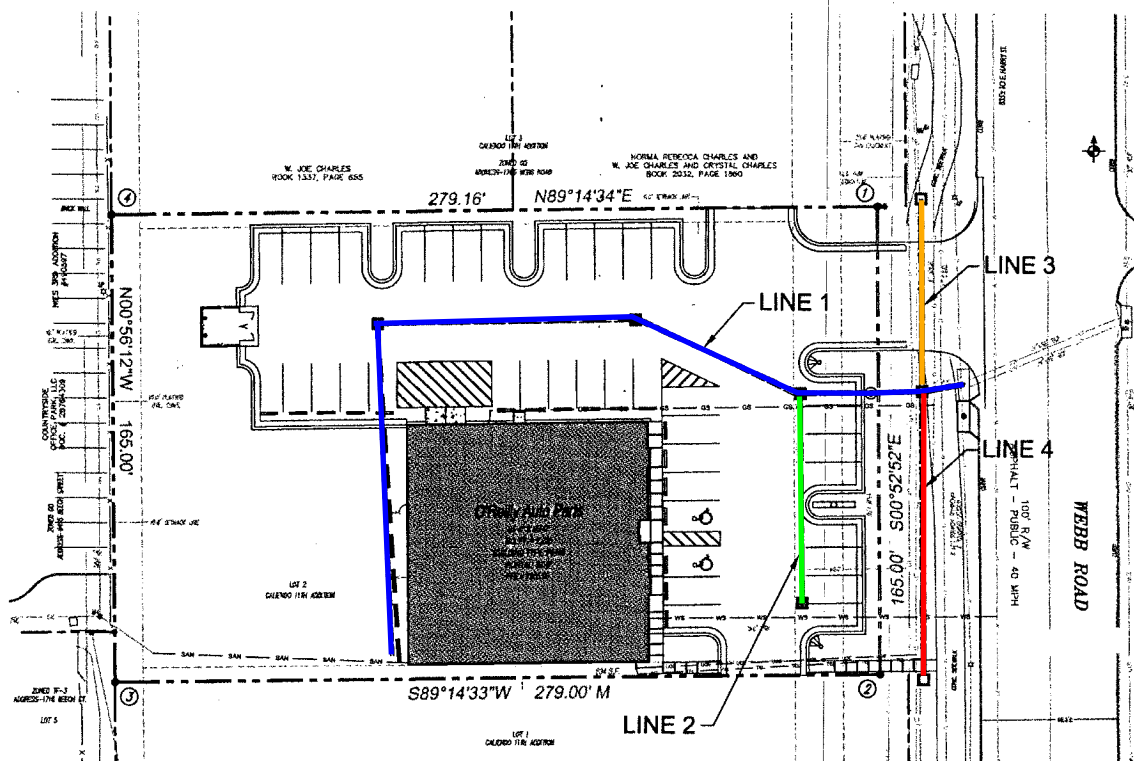
Line 2,3,4 and part of line 1 was already done before I was hired

INDEX OF SHEETS

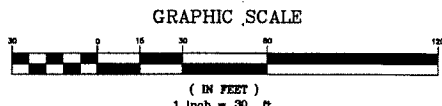
1. STORM SEWER COVER
2. STORM SEWER PLAN/PROFILE
3. STORMWATER DETAILS
4. SITE GRADING, EROSION CONTROL, & ERU PLAN

GENERAL NOTES:

- CONTRACTOR WILL BE REQUIRED TO PROVIDE NOTICE TO UTILITY COMPANIES A MINIMUM OF SEVENTY-TWO (72) HOURS PRIOR TO ANY EXCAVATION, AS FOLLOWS:
KANSAS ONE-CALL 687-2470
THE CONTRACTOR MUST NOTIFY THE FOLLOWING IN CASE OF AN EMERGENCY:
COX COMMUNICATIONS 316-262-4270
KANSAS GAS SERVICE 1-888-482-4960
WESTAR ENERGY 316-383-8650
AT&T 316-268-2245
CITY OF WICHITA WATER DEPT. 316-268-4563
CITY OF WICHITA SEWER MAINT. 316-268-4024
CITY OF WICHITA STORM SEWER MAINT. 316-268-4090
CITY OF WICHITA TRAFFIC MAINT. 316-268-4034
- UTILITY SERVICE LINES, POLES, VALVE BOXES, METERS, AND ETCETERA ARE TO BE ADJUSTED AS NECESSARY BY OTHERS PRIOR TO CONSTRUCTION UNLESS THE PLANS SPECIFICALLY CALL FOR THEIR ADJUSTMENT BY THE CONTRACTOR OR UNLESS THE PLANS SPECIFICALLY IDENTIFY A UTILITY TO BE ADJUSTED BY ITS OWNER DURING CONSTRUCTION. EXISTING UTILITIES AND THEIR LOCATION AS SHOWN ON THE PLANS, REPRESENT THE BEST INFORMATION OBTAINABLE FOR DESIGN. THE CONTRACTOR WILL BE REQUIRED TO WORK AROUND EXISTING UTILITIES WITHIN THE RIGHT-OF-WAY WHICH DO NOT CONFLICT WITH PROPOSED CONSTRUCTION.
- RUBBLE FROM THE REMOVAL OF MISCELLANEOUS STRUCTURES AND EXCESS EXCAVATION WHICH IS TO BE WASTED SHALL BE DISPOSED OF ON SITES TO BE PROVIDED THE CONTRACTOR. THESE SITES SHALL BE APPROVED BY THE ENGINEER AS TO SUITABILITY, APPEARANCE AND SITE LOCATION. LOCATIONS, IN THE OPINION OF THE ENGINEER, THAT WILL LEAVE AN UNSIGHTLY APPEARANCE WILL NOT BE APPROVED. ALL DISPOSAL SITES MUST BE APPROVED BY THE KANSAS DEPARTMENT OF HEALTH AND ENVIRONMENT. MATERIAL EITHER STOCKPILED OR DISPOSED OF IN A FLOOD PLAIN WOULD REQUIRE A KANSAS STATE BOARD OF AGRICULTURE PERMIT. ANY MATERIAL DUMPED IN WATERS OF THE UNITED STATES OR WETLANDS IS SUBJECT TO U.S. CORPS. OF ENGINEERS PERMITTING REGULATIONS. ANY MATERIAL BURIED OR STOCKPILED BEYOND APPROVED CONSTRUCTION LIMITS WOULD REQUIRE ADDITIONAL ARCHAEOLOGICAL INVESTIGATIONS UNLESS BURIED IN A PREVIOUSLY APPROVED BORROW LOCATION.
- ALL DISTURBED ROW AREAS NOT INTENDED FOR PAVEMENT OR SIDEWALK CONSTRUCTION SHALL BE SEEDDED WITH KANSAS PREMIUM FESCUE BLEND AT A RATE OF 8 LB./1000 SQ. FT., FERTILIZED WITH A 16-20-8 RATIO AT A RATE OF 92 LB./1000 SQ. FT. MULCH SHALL BE "PATTEDED" WITH FORKS OR PUNCHED INTO SOIL TO REDUCE LOSS DUE TO WIND.
- THE CONTRACTOR SHALL GIVE ALL PROPERTY OWNERS AND/OR TENANTS OF DEVELOPED PROPERTY ADJUTING THE CONSTRUCTION OF THIS PROJECT A MINIMUM OF TWO (2) DAYS NOTICE PRIOR TO START OF CONSTRUCTION.
- CONTRACTOR SHALL FURNISH THE INSPECTOR WITH A COPY OF THE MANUFACTURER'S CERTIFICATION FOR ANY PIPE USED ON THIS PROJECT AFTER COMPLETION OF PIPE USED ON THIS PROJECT AFTER COMPLETION OF PIPE INSTALLATION. THE ENGINEER WILL NOT CERTIFY THE PROJECT TO THE CITY UNTIL PIPE CERTIFICATION HAS BEEN RECEIVED.
- ALL WATER LINES AND APPURTENANCES SHALL BE INSTALLED IN ACCORDANCE WITH THE MOST RECENT EDITION OF CITY OF WICHITA, KANSAS STANDARD SPECIFICATIONS FOR THE CONSTRUCTION OF CITY PROJECTS.
- CONTRACTOR SHALL NOT START WORK ON THE PROJECT UNTIL THE PROJECT INSPECTOR IS ASSIGNED TO THE PROJECT AND IS PRESENT ON THE SITE. CONTRACTOR SHALL NOT START ON THE PROJECT UNTIL ALL NECESSARY BONDS AND PERMITS HAVE BEEN OBTAINED. BONDS MAY INCLUDE, BUT ARE NOT LIMITED TO, STATUTORY, PERFORMANCE & MAINTENANCE FOR AREAS IN PUBLIC RIGHT-OF-WAY AND EASEMENT. FOR PROJECTS WITHIN THE CITY OF WICHITA CONTACT TOM MASON (316-268-4574). ANY WORK DONE WITHOUT INSPECTION WILL BE REQUIRED TO BE UNCOVERED FOR INSPECTION.
- TRAFFIC WILL NOT BE AFFECTED BY THE CONSTRUCTION OF THIS PROJECT.
- TREES IN CONFLICT WITH CONSTRUCTION SHALL BE REMOVED OR TRIMMED AS NECESSARY.

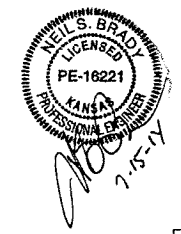


SITE PLAN
SCALE: 1" = 30'



CALL BEFORE YOU DIG - DRILL - BLAST (DIG-SAFE)
KANSAS ONE-CALL SYSTEMS, INC.
KANSAS ONE CALL SYSTEM, INC.

ANDERSON ENGINEERING, INC. (A/E)
ENGINEERS • SURVEYORS • LABORATORIES • DRILLING
2045 W. WOODLAND • SPRINGFIELD, MISSOURI 65807 • PHONE (417) 866-2741
COAF E-137 • ENGINEER REGISTRATION # PE-16221 • NEIL S. BRADY



APPROVED AS NOTED
BY CITY ENGINEER OF WICHITA

Sanitary Sewers N/A
Storm Sewers Jan Hardy 7-23-14
Driveway Approaches N/A
Water Mains N/A
Paving N/A
Engineering Rebecca Friel 7/23/14

NOTE TO CONTRACTORS
Inspection and testing for this project are to be provided by a Licensed Consulting Engineering Firm under contract with the Owner/Developer. Said inspection to be in accordance with the City of Wichita standard construction engineering practices and certified by a Licensed Professional Engineer. No work shall be performed in dedicated easements or public right-of-way by the Contractor without such inspection, nor shall any work be commenced without written authorization by the City Engineer.

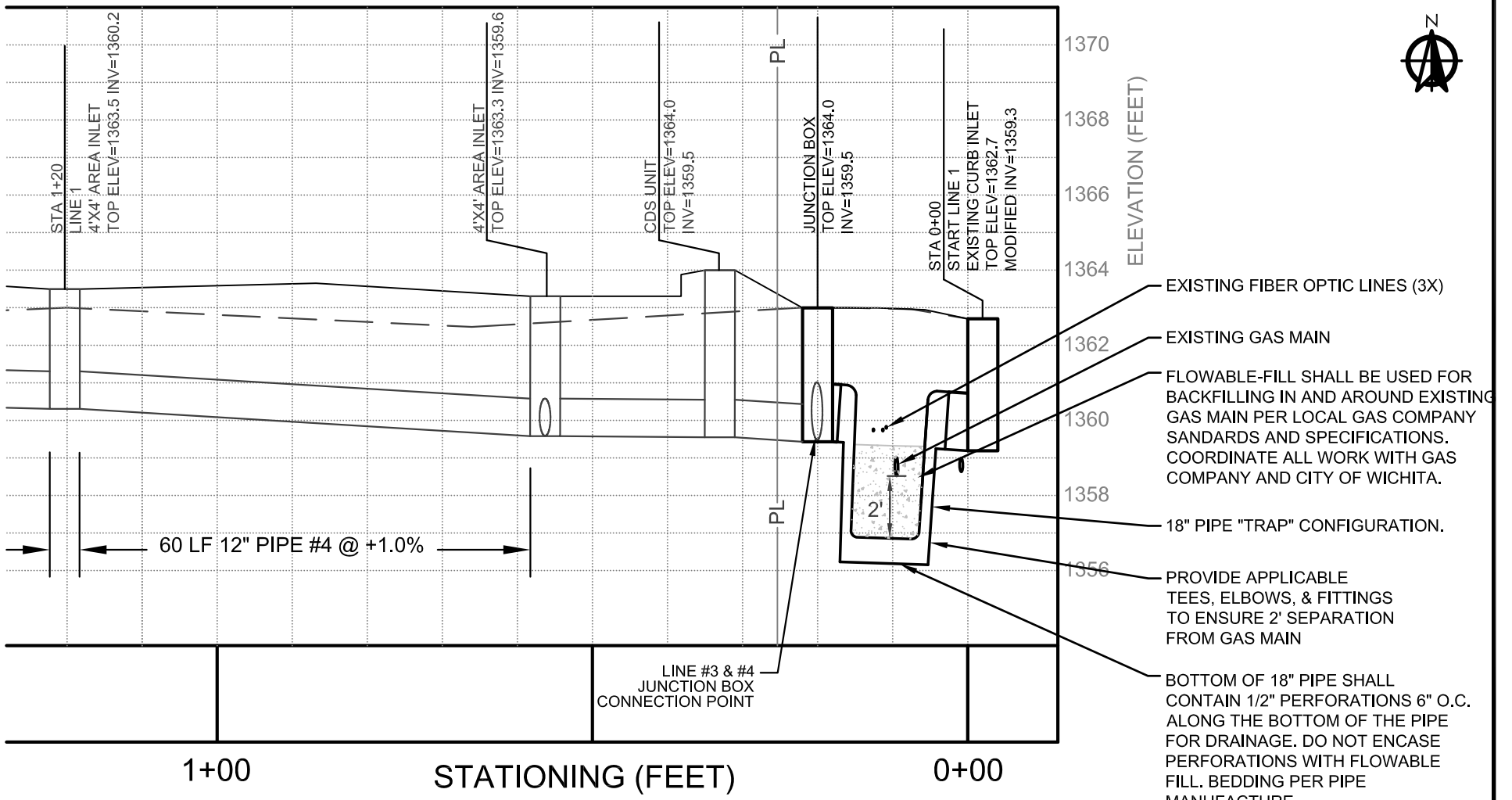
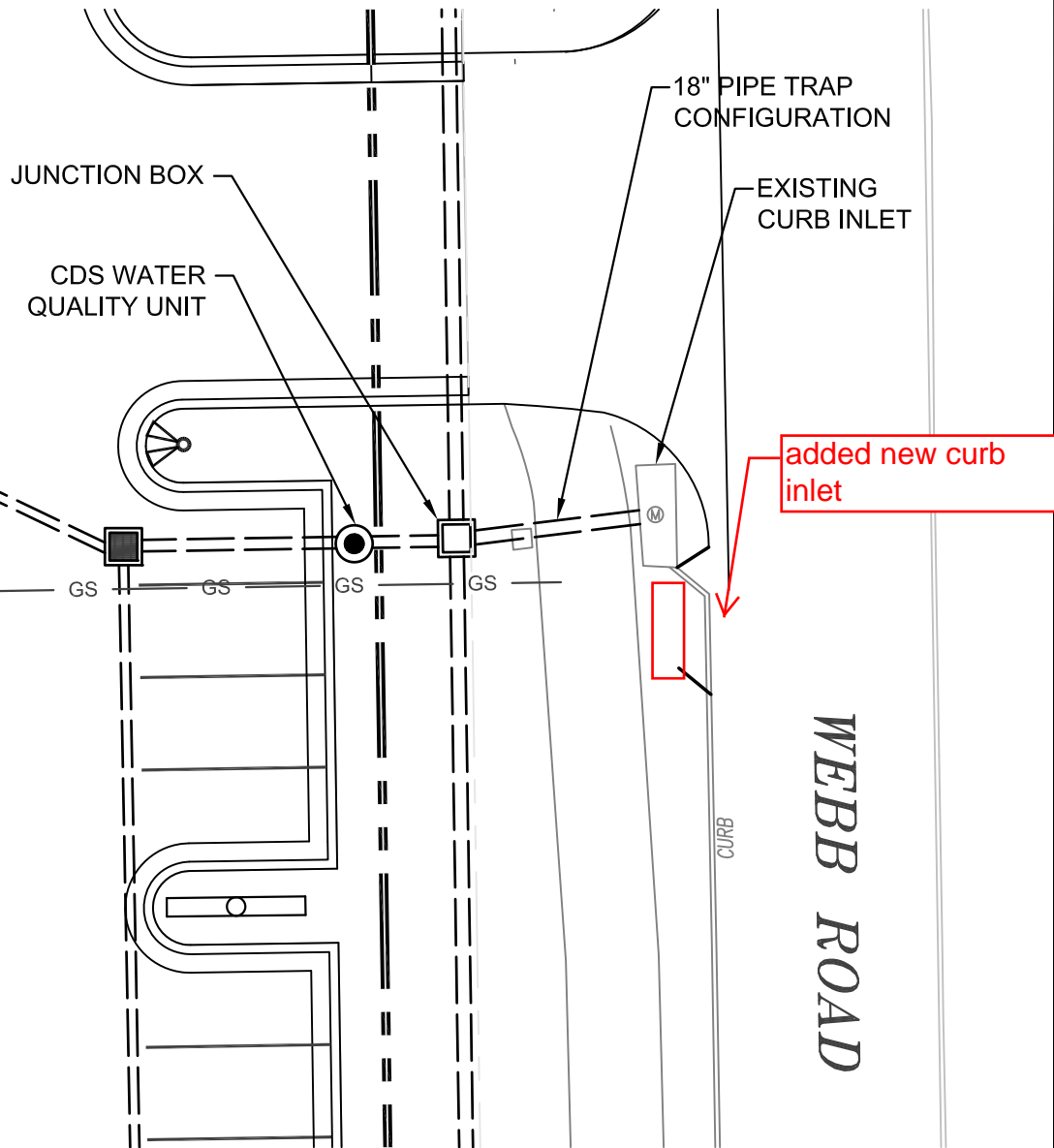
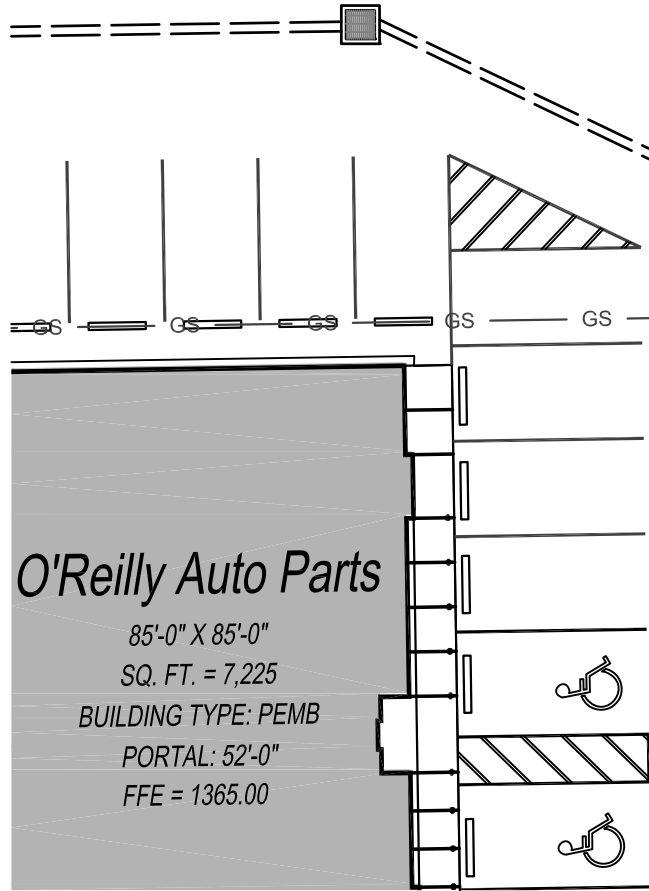
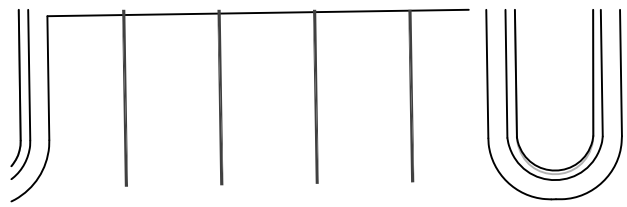
STORMWATER SUMMARY & NARRATIVE:
TOTAL PROPERTY AREA = 1.05 ACRES
ACRES TOTAL DISTURBED AREA = 0.9 ACRES
PROPOSED IMPERVIOUS AREA: 28,750 SF (0.66 ACRES)

DETENTION IS NOT REQUIRED DUE TO THE IMPERVIOUS SURFACES PROPOSED AND SITE BEING LESS THAN 1-ACRE. STORMWATER RUNOFF GENERATED FROM THE DEVELOPED SITE WILL BE COLLECTED AND PIPED THRU A BELOW GRADE WATER QUALITY UNIT BEFORE CONNECTING TO THE CITY OF WICHITA STORM SYSTEM ALONG WEBB ROAD. ADDITIONAL STORMWATER JUNCTION BOXES HAVE BEEN PROVIDED NORTH AND SOUTH OF THE SITE FOR FUTURE DEVELOPMENT OF THE ADJACENT PROPERTIES.

STORMWATER CERTIFICATION
THESE CONSTRUCTION PLANS WERE PREPARED IN ACCORDANCE WITH THE CURRENT STORMWATER MANAGEMENT REGULATIONS AS SET FORTH IN THE CITY OF WICHITA'S STORMWATER MANGEMENT ORDINANCE 16.32 AND THE POLICIES/GUIDELINES PRESENTED IN THE WICHITA/SEDCWICK COUNTY STORMWATER MANUAL.

DISTURBED AREA: 0.9 ACRES
WATER QUALITY TREATMENT: CONTECH CDS UNIT
DOWNSTREAM CHANNEL PROTECTION: NOT REQ'D

SYMBOLS LEGEND	
REFER TO SURVEY (SV1) FOR EXISTING CONDITION SYMBOLS LEGEND AND SITE CONTROL.	NEW SPOT ELEVATIONS LIST ABBREVIATION
1133 EXISTING GRADE LINES	LIST ABBREVIATION
1333 PROPOSED NEW GRADE LINES	GRADE NONE
NEW BUILDING CONSTRUCTION	SIDEWALK SW
NEW SIGN LOCATION	TOP OF WALL TW
NEW CONCRETE PAVING BLOCK	TOP OF CURB TC
	TOP OF PAVEMENT PNT
	NEW GRADE GO
	CONCRETE COWC
	EXISTING TOP OF CURB ETC
	EXISTING GRADE EGD
	EXISTING PAVEMENT EPV
	EXISTING SIDEWALK ESW
	FLOW LINE FL
	TOP OF BERM TOP
	TEMPORARY BENCH MARK
	TBM1 IS A SQUARE CUT IN NORTHEAST CORNER OF A CONCRETE STORM BOX ALONG THE WEST SIDE OF WEBB ROAD WITH AN ELEVATION OF 1362.58. MAY BE BASED ON MONUMENT BEC B (172.84). (REFER TO SV1 FOR VERTICAL CONTROL AND EXACT LOCATION)



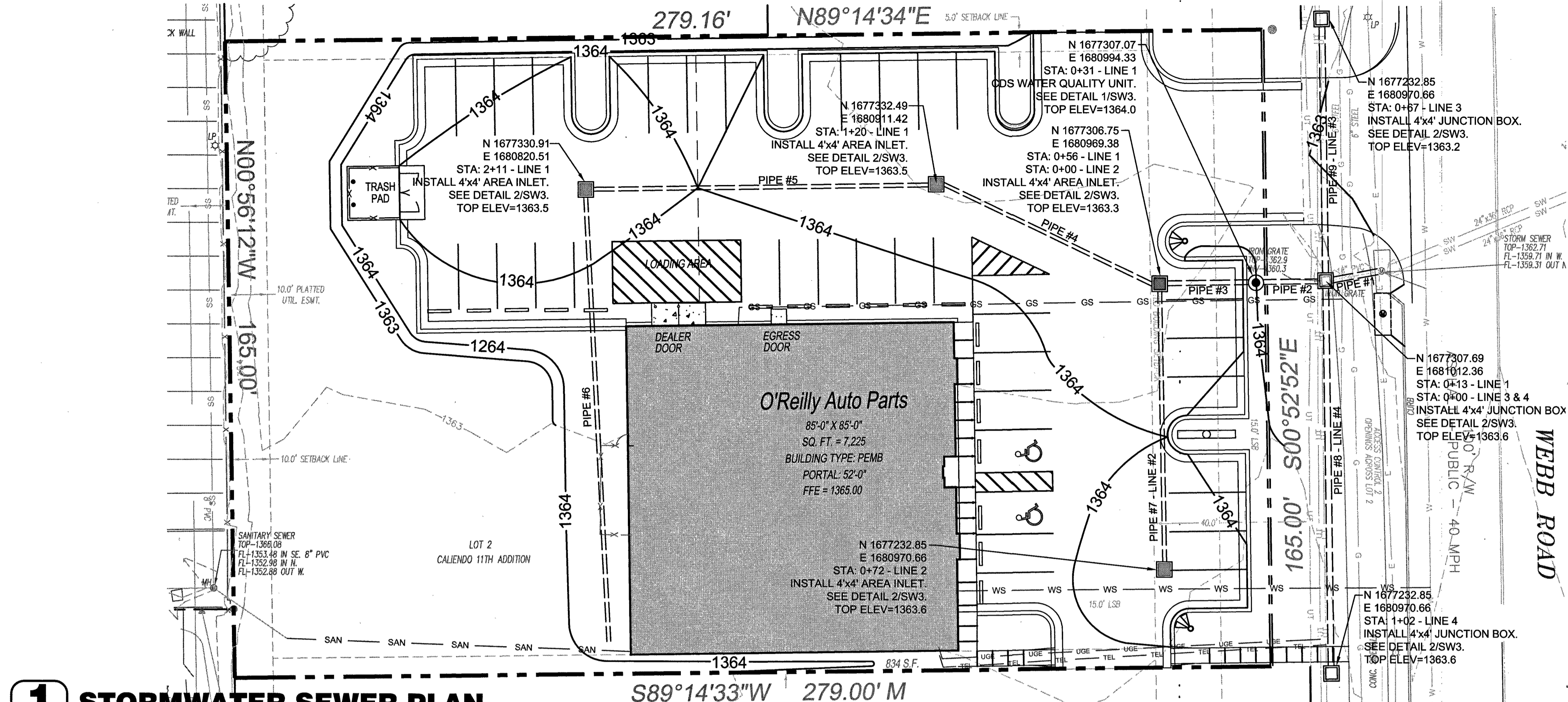
ANDERSON ENGINEERING, INC (A/E)

ENGINEERS • LABORATORIES • SURVEYORS • DRILLING
 2045 W. WOODLAND • SPRINGFIELD, MISSOURI 65807 • PHONE (417) 866-2741
 501 E. 15TH, SUITE 100 • JOPLIN, MISSOURI 64804 • PHONE (417) 782-7399
 10636 HWY 72 WEST #1201 • BENTONVILLE, AR 72712 • PHONE (479) 254-6939
 VISIT OUR WEBPAGE AT WWW.AEINCMO.COM

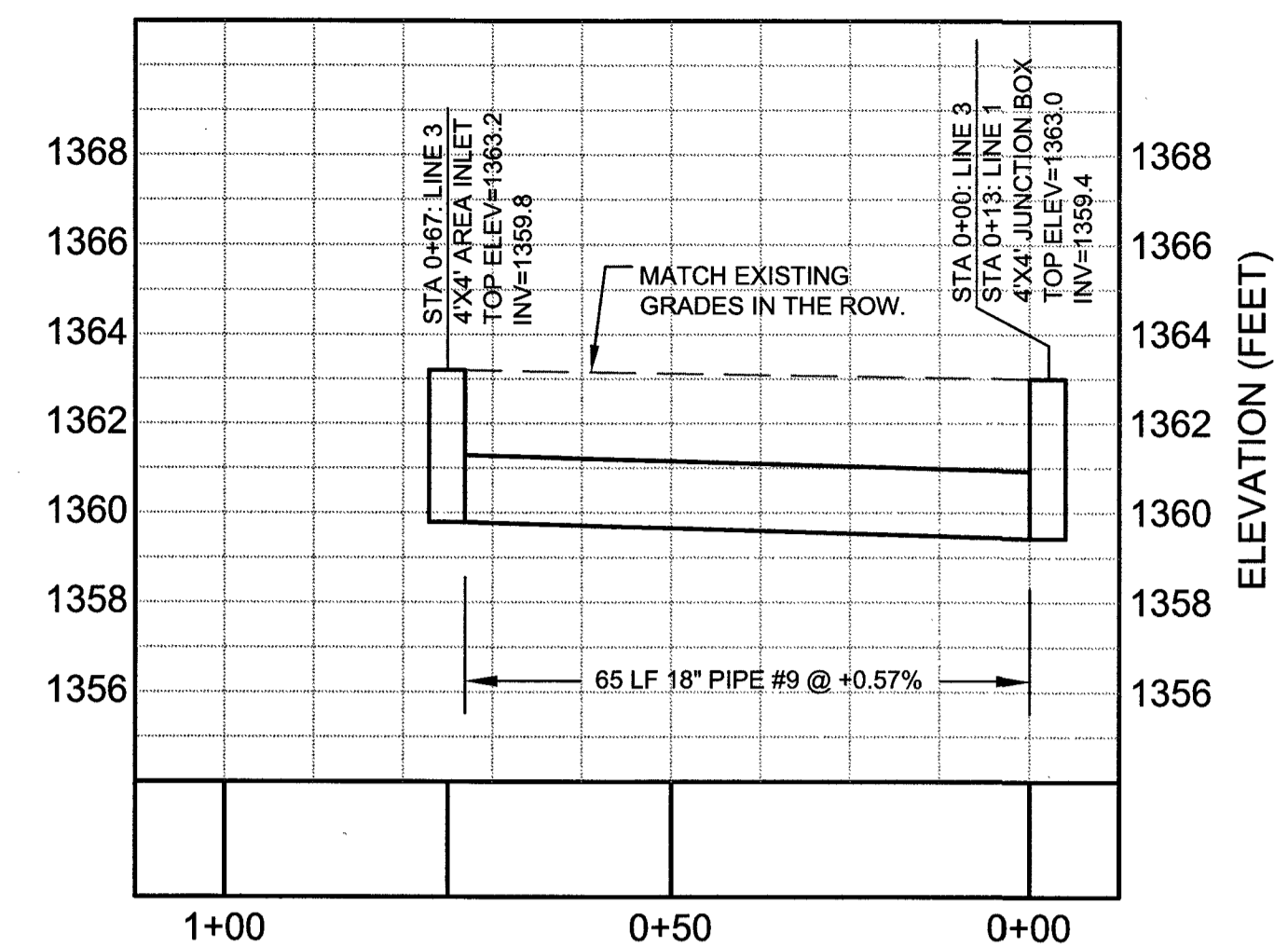
O'Reilly AUTO PARTS

1717 S WEBB ROAD
 WICHITA, KS #11

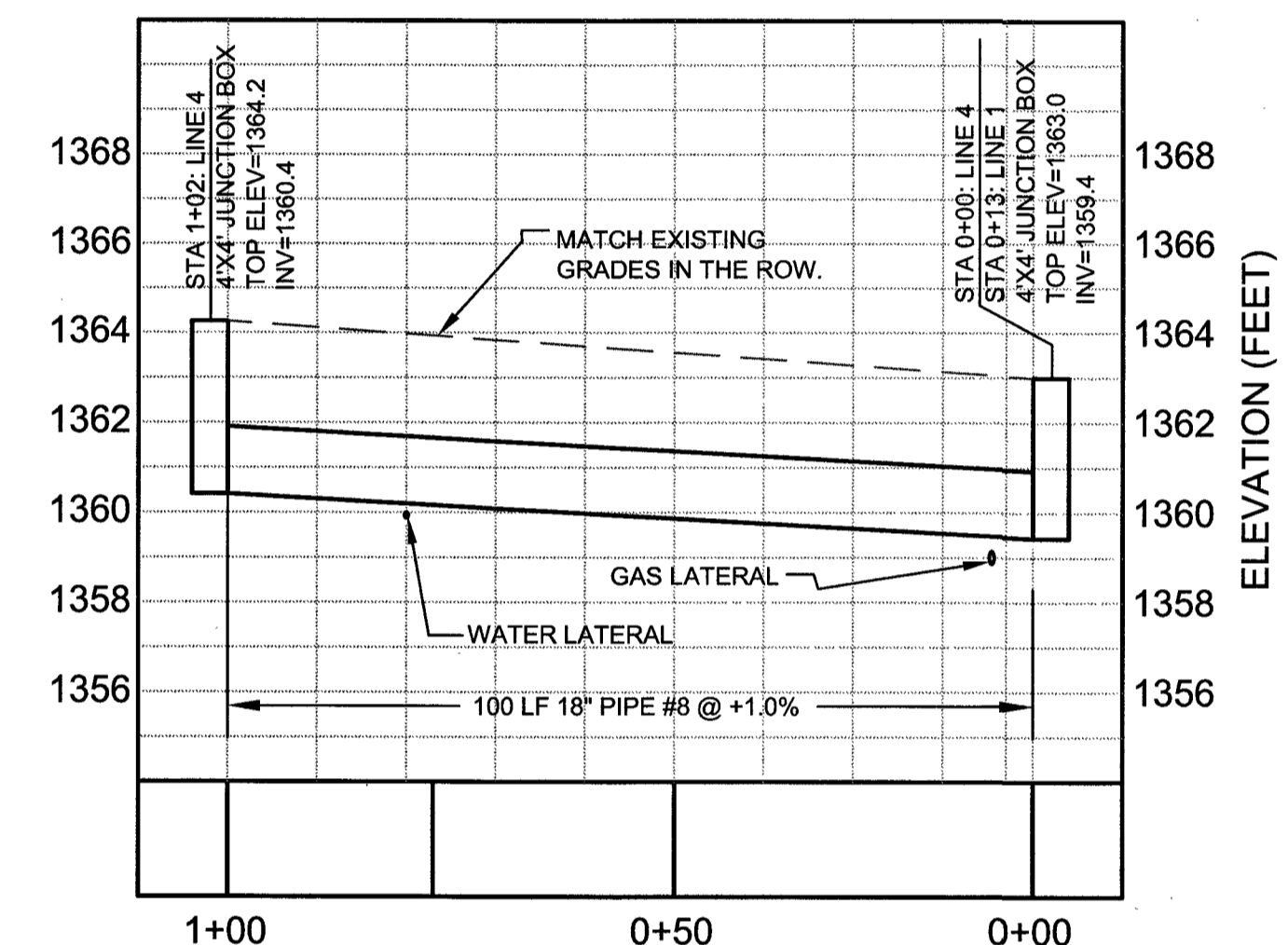
DRAWN BY:
 WAS
 DATE:
 12-8-14
 CLIENT NO:
 10119-14



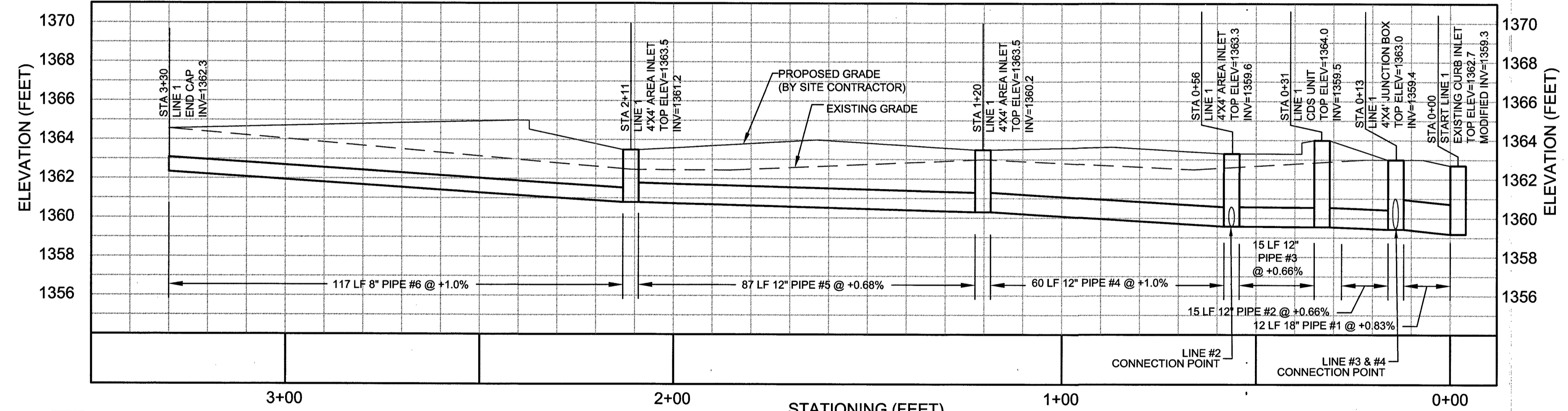
1 STORMWATER SEWER PLAN
SW2 SCALE: 1" = 20'



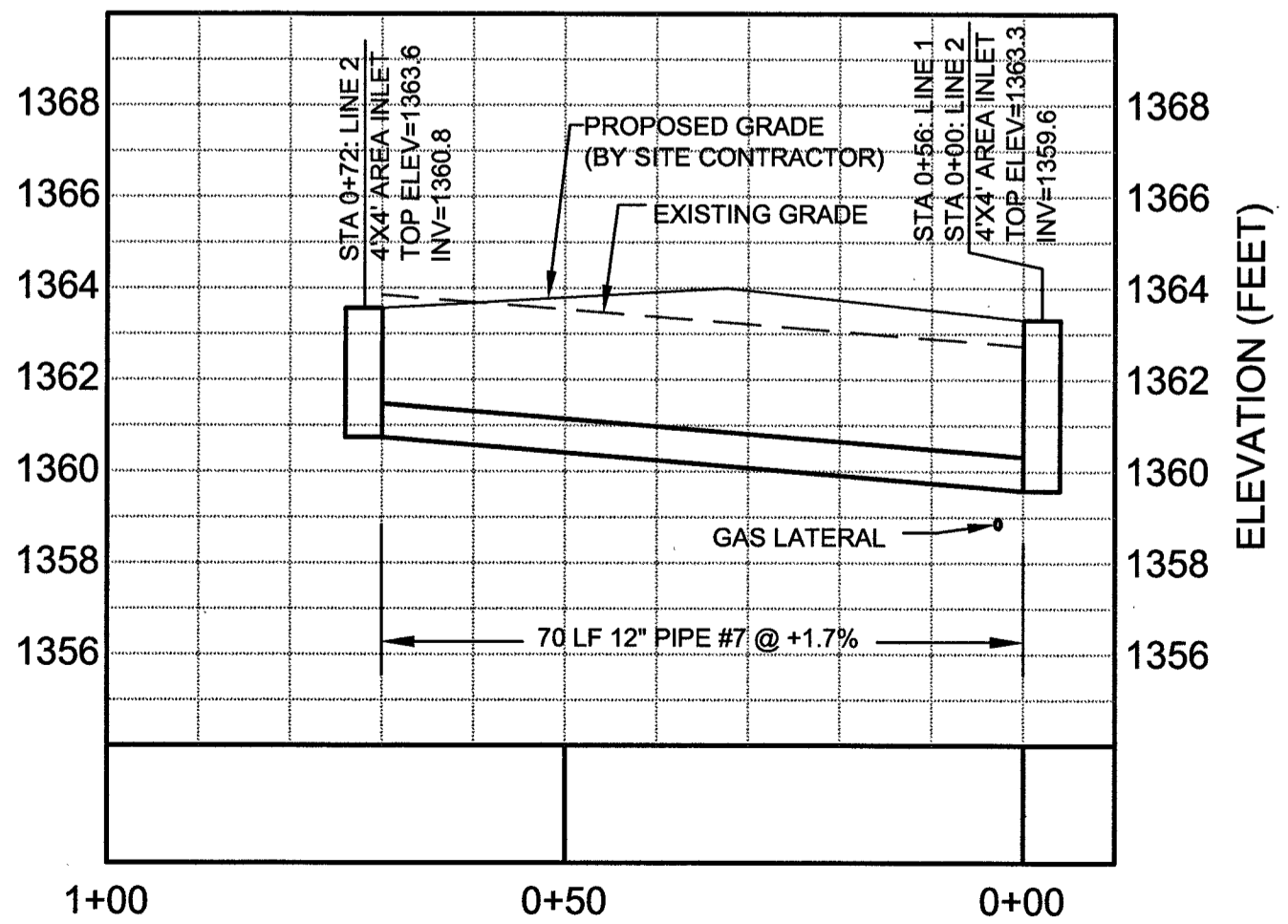
4 LINE 3 - STORMWATER SEWER PROFILE
SW2 HORIZONTAL SCALE: 1" = 20' VERTICAL SCALE: 1" = 5'



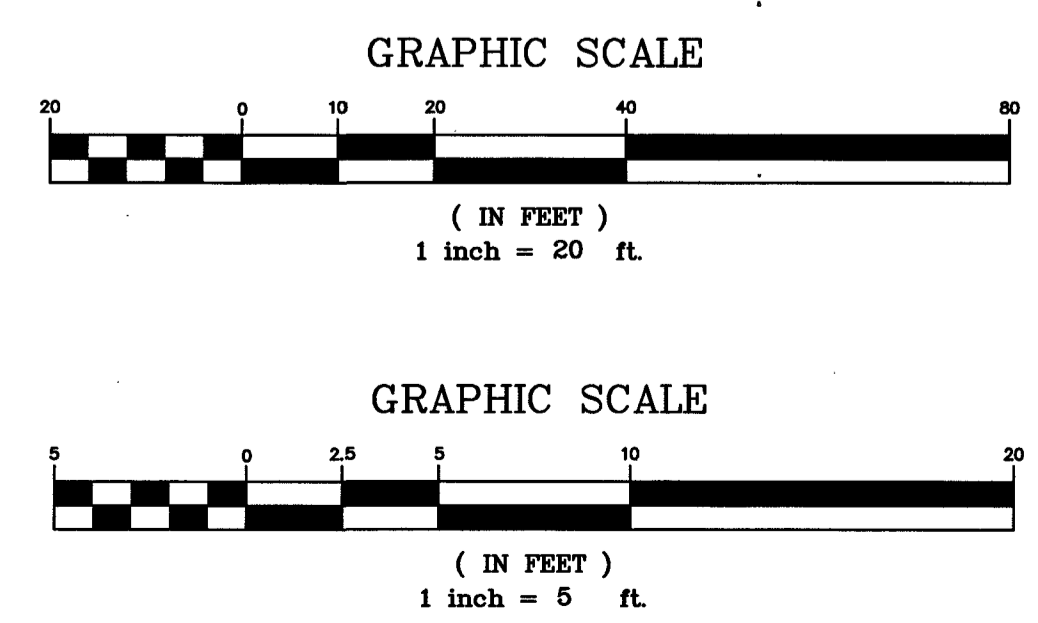
5 LINE 4 - STORMWATER SEWER PROFILE
SW2 HORIZONTAL SCALE: 1" = 20' VERTICAL SCALE: 1" = 5'



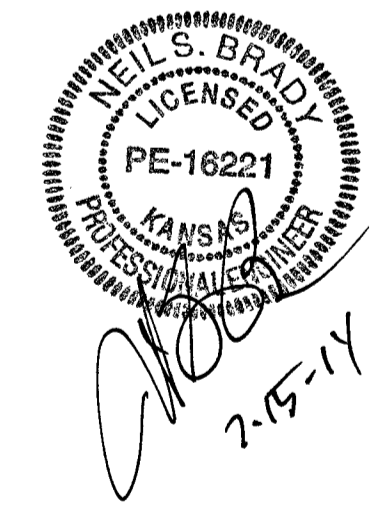
2 LINE 1 - STORMWATER SEWER PROFILE
SW2 HORIZONTAL SCALE: 1" = 20' VERTICAL SCALE: 1" = 5'



3 LINE 2 - STORMWATER SEWER PROFILE
SW2 HORIZONTAL SCALE: 1" = 20' VERTICAL SCALE: 1" = 5'



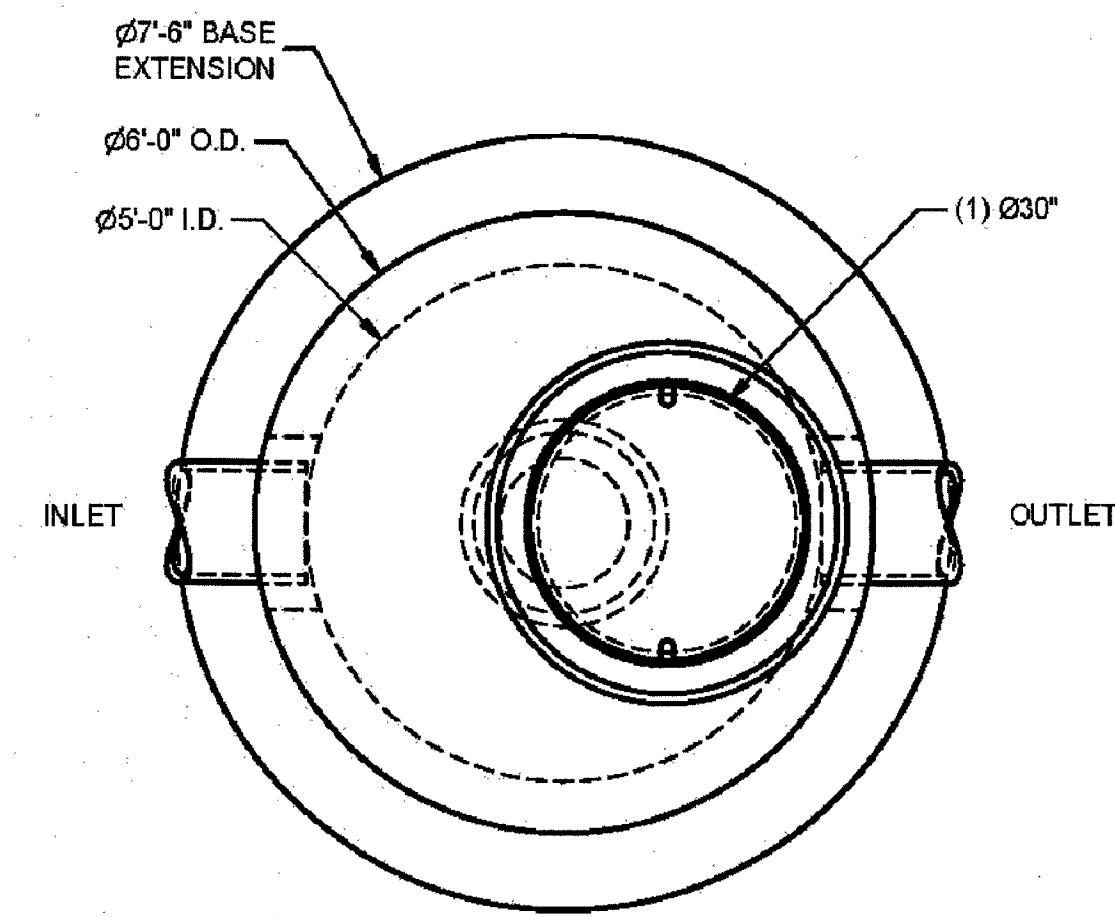
CAUTION! VERIFY EXISTING UTILITIES!
 PROVIDE 18" MIN. CLEARANCE BETWEEN SEWER AND
 STORM WATER PIPES. CONTACT ENGINEER IF
 DISCREPANCIES OCCUR.



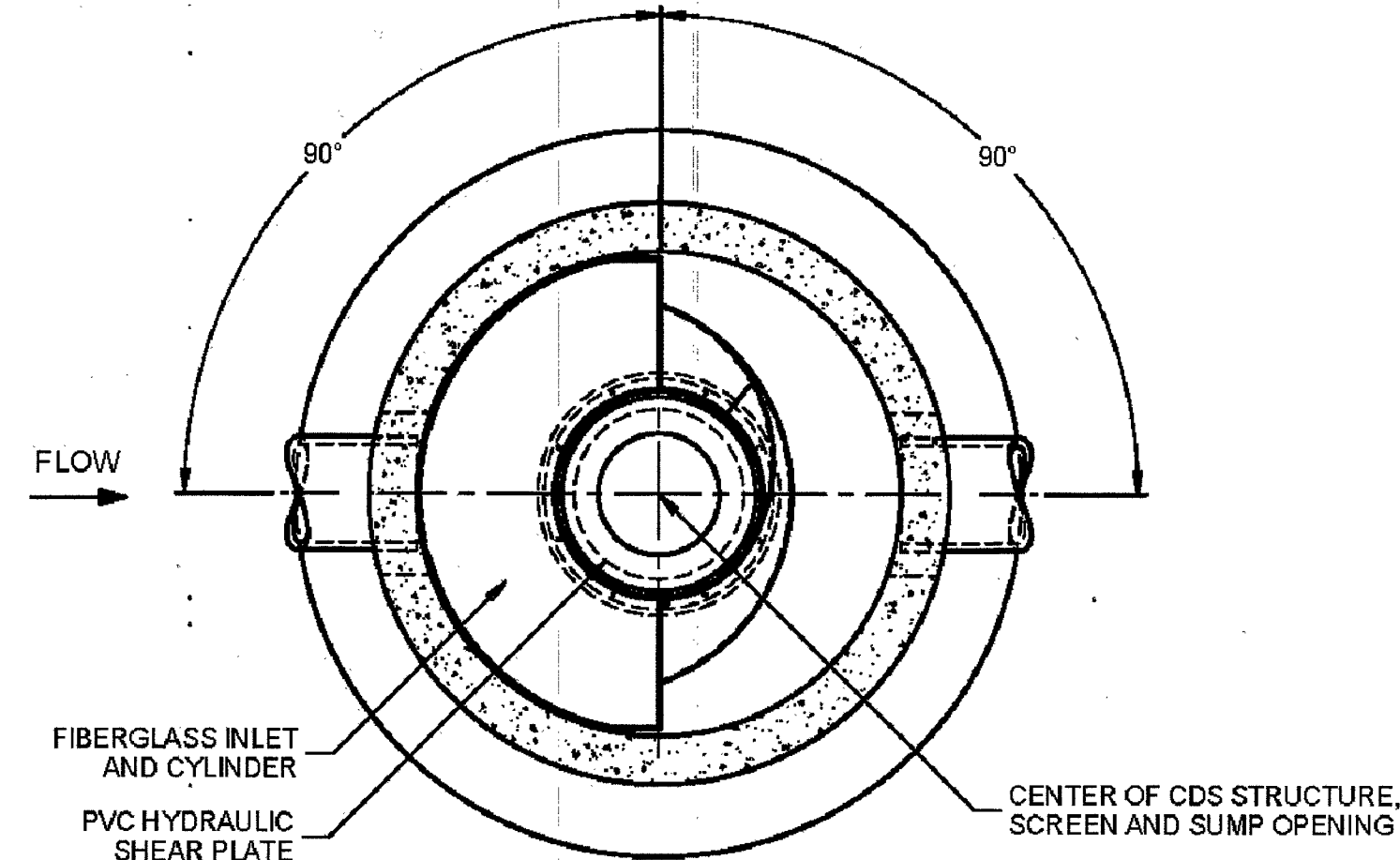
STORM SEWER IMPROVEMENTS
 TO SERVE
LOT 2, TRACT 1, CALIENDO 11TH ADDITION
PROJECT NO. 0253 PPD (607861)
CITY OF WICHITA, KANSAS
 GARY JANZEN, P.E. - CITY ENGINEER

KANSAS ONE-CALL SYSTEMS, INC.
 CALL BEFORE YOU DIG - DRILL - BLAST
 800-344-7233
 (DIG-SAFE)
 (316) 687-3753
 (FAX)
 KANSAS ONE CALL SYSTEM, INC.

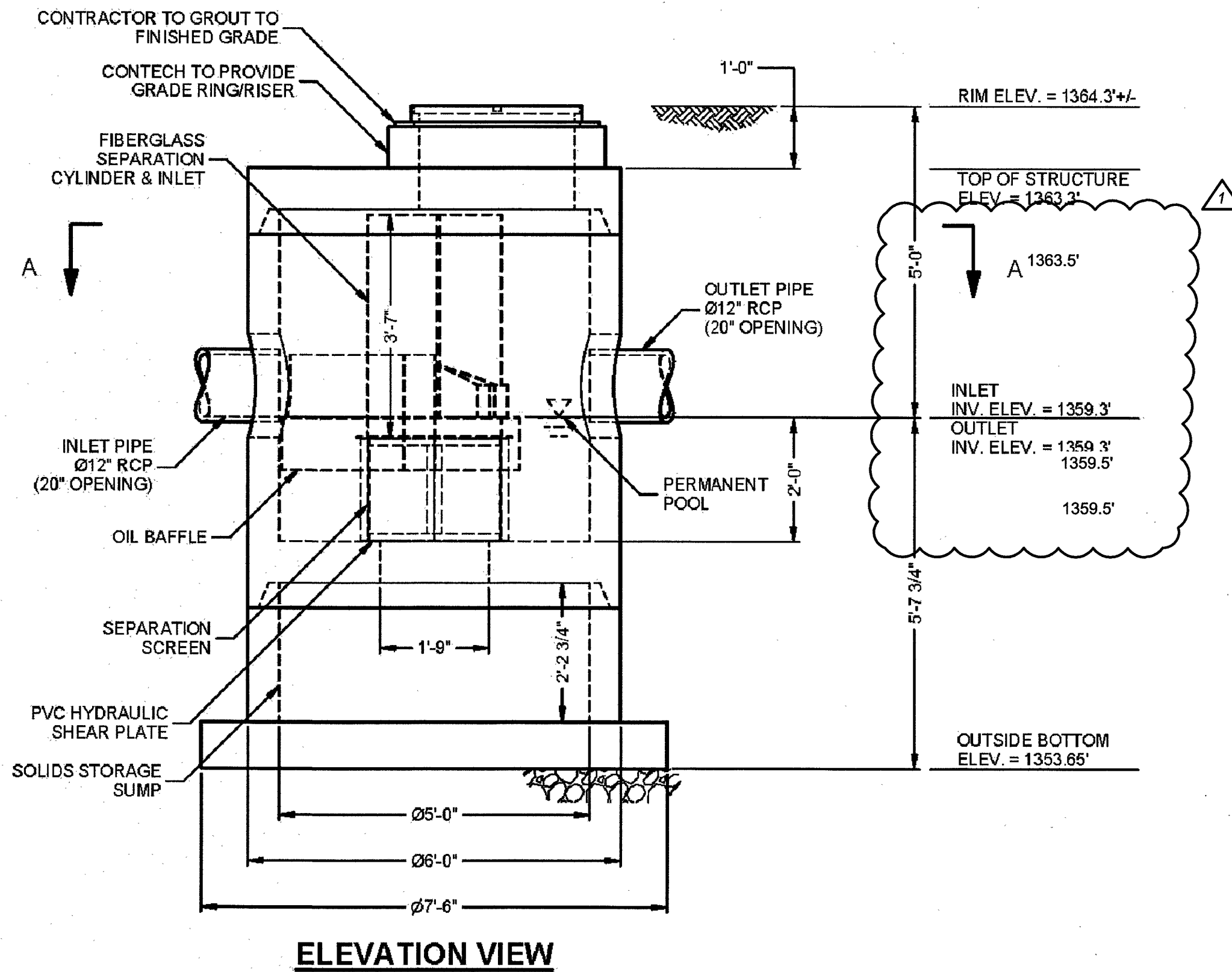
ANDERSON ENGINEERING, INC.
 ENGINEERS • SURVEYORS • LABORATORIES • DRILLING
 2045 W. WOODLAND • SPRINGFIELD, MISSOURI 65807 • PHONE (417) 866-2741
 COA# E-137 • ENGINEER REGISTRATION # PE-16221 • NEIL S. BRADY



PLAN VIEW



SECTION A-A



ELEVATION VIEW

MATERIAL LIST - PROVIDED BY CONTECH

COUNT	DESCRIPTION	INSTALLED BY
1	FIBERGLASS INLET AND CYLINDER	CONTECH
1	2400 micron, 2.13' O.D. x 1.67' SEP. SCREEN	CONTECH
1	3/16 INCH PVC HYDRAULIC SHEAR PLATE	CONTECH
1	SEALANT FOR JOINTS	CONTRACTOR
1 PLC	GRADE RINGS/RISERS	CONTRACTOR
1	1230" x 4" EJ #41600484, OR EQUIVALENT	CONTRACTOR

GENERAL NOTES

- CONTECH TO PROVIDE ALL MATERIALS UNLESS NOTED OTHERWISE.
- FOR FABRICATION DRAWINGS WITH DETAILED STRUCTURE DIMENSIONS AND WEIGHT, PLEASE CONTACT YOUR CONTECH ENGINEERED SOLUTIONS LLC REPRESENTATIVE. www.ContechES.com
- CDS WATER QUALITY STRUCTURE SHALL BE IN ACCORDANCE WITH ALL DESIGN DATA AND INFORMATION CONTAINED IN THIS DRAWING.
- STRUCTURE SHALL MEET AASHTO HS-20 LOAD RATING. ASSUMING EARTH COVER OF 0' - 5', AND GROUNDWATER ELEVATION AT, OR BELOW, THE OUTLET PIPE INVERT ELEVATION. ENGINEER OF RECORD TO CONFIRM ACTUAL GROUNDWATER ELEVATION. CASTINGS SHALL MEET AASHTO M308 AND BE CAST WITH THE CONTECH LOGO.
- IF REQUIRED, PVC HYDRAULIC SHEAR PLATE IS PLACED ON SHELF AT BOTTOM OF SCREEN CYLINDER. REMOVE AND REPLACE AS NECESSARY DURING MAINTENANCE CLEANING.
- CDS STRUCTURE SHALL BE PRECAST CONCRETE CONFORMING TO ASTM C-478 AND AASHTO LOAD FACTOR DESIGN METHOD.

INSTALLATION NOTES

- ANY SUB-BASE, BACKFILL DEPTH, AND/OR ANTI-FLOTATION PROVISIONS ARE SITE-SPECIFIC DESIGN CONSIDERATIONS AND SHALL BE SPECIFIED BY ENGINEER OF RECORD.
- CONTRACTOR TO PROVIDE EQUIPMENT WITH SUFFICIENT LIFTING AND REACH CAPACITY TO LIFT AND SET THE CDS MANHOLE STRUCTURE.
- CONTRACTOR TO INSTALL JOINT SEALANT BETWEEN ALL STRUCTURE SECTIONS AND ASSEMBLE STRUCTURE.
- CONTRACTOR TO PROVIDE, INSTALL, AND GROUT PIPES. MATCH PIPE INVERTS WITH ELEVATIONS SHOWN. ALL PIPE CENTERLINES TO MATCH PIPE OPENING CENTERLINES.
- CONTRACTOR TO TAKE APPROPRIATE MEASURES TO ASSURE UNIT IS WATER TIGHT, HOLDING WATER TO FLOWLINE INVERT MINIMUM. IT IS SUGGESTED THAT ALL JOINTS BELOW PIPE INVERTS ARE GROUTED.

STRUCTURE WEIGHT
APPROXIMATE HEAVIEST PICK = 9500 LBS
STRUCTURE IS DELIVERED IN 3 PIECES

MAX FOOTPRINT - 7.5'

CONTECH
CONTRACT
DRAWING

CREB
2015-5-FGIS
1047/CRE81394

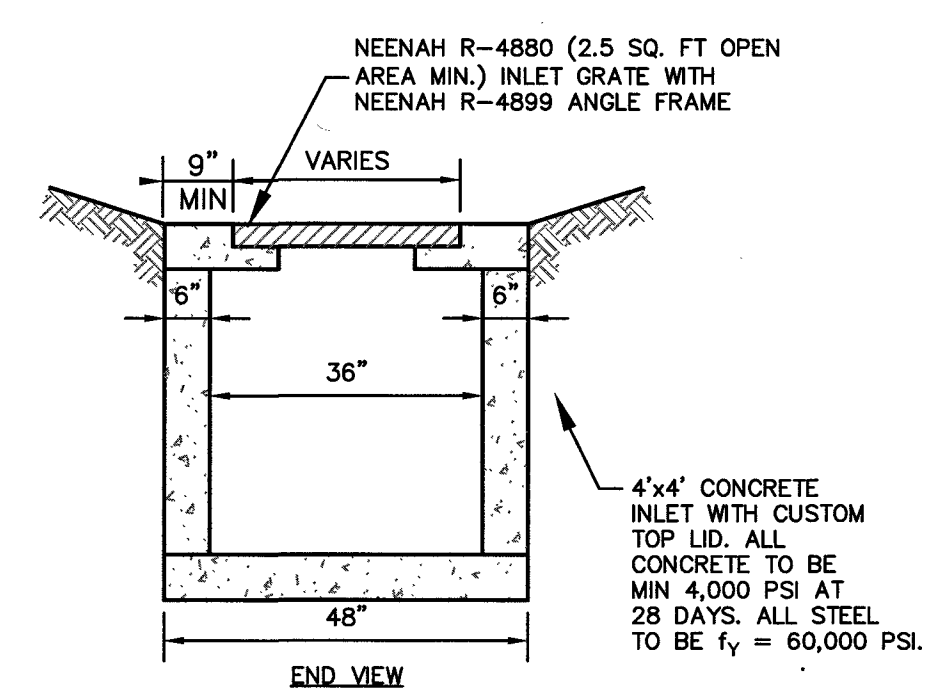
NO.	DATE	REVISION DESCRIPTION	BY

CDS2015-5-C - 500862-10
O'REILLY AUTO PARTS - WICHITA
WICHITA, KS

CONTECH ENGINEERED SOLUTIONS LLC
7115 South E. Street, Suite F, Scottsdale, AZ 85261
711.901.9418
www.conteches.com
202.988.8600 202.668.8837.700

DATE: 5/13/14 SCALE: DRAWN: JHR MLC CHECKED: N/A APPROVED: JHR PROJECT NUMBER: 500862 SHEET: 1 OF 1

1 CDS UNIT DETAIL
SW3 SCALE: NTS



- NOTES:
1. MIN. #4 BARS @ 12" O.C. (ALL WALLS VERT, HOR, & SLAB)
2. IF NO CITY STANDARD FOR JUNCTION BOXES, USE ABOVE DETAIL WITH SOLID GRATE LID.

2 4' X 4' AREA INLET
SW3 SCALE: NTS

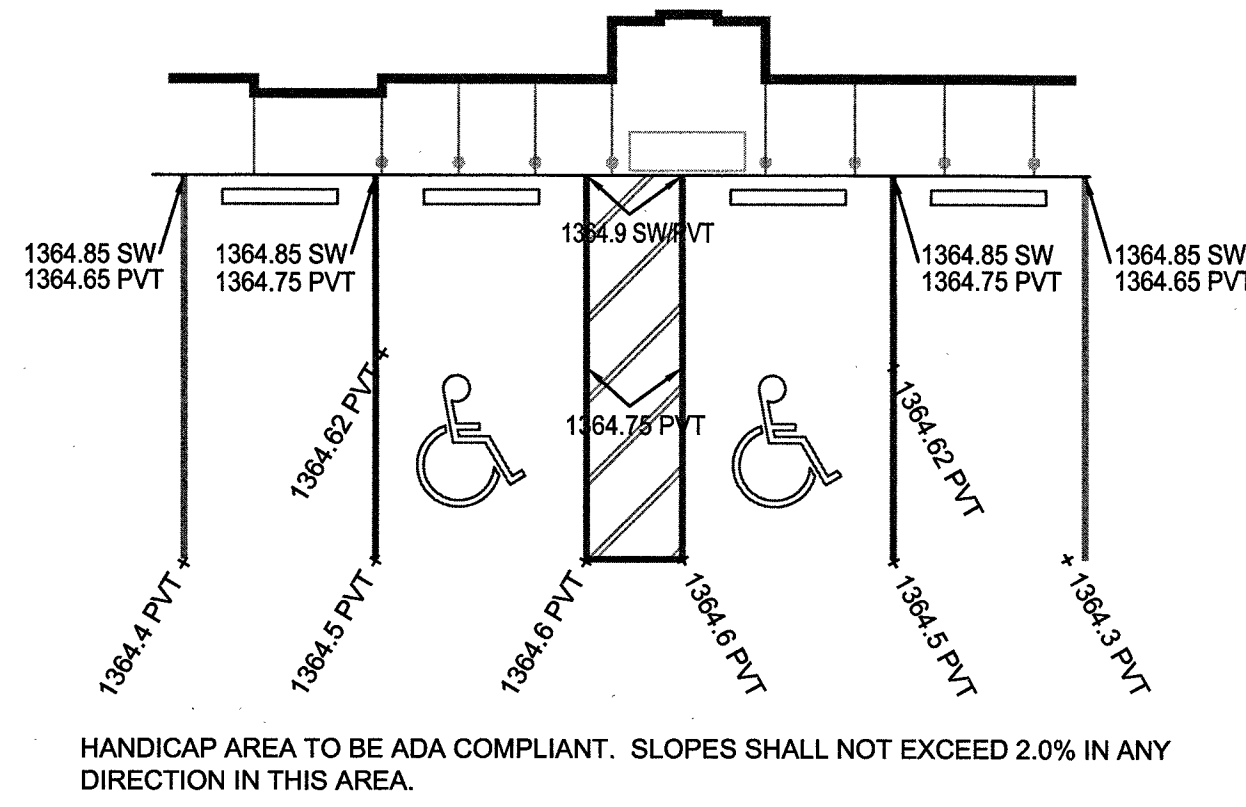
STORM SEWER IMPROVEMENTS

TO SERVE
LOT 2, TRACT 1, CALIENDO 11TH ADDITION
PROJECT NO. 0253 PPD (607861)
CITY OF WICHITA, KANSAS
GARY JANZEN, P.E. - CITY ENGINEER

KANSAS ONE-CALL SYSTEMS, INC.
CALL BEFORE YOU DIG - DRILL - BLAST
800-344-7233
(DIG-SAFE)
(316) 687-3753
(FAX)

ANDERSON ENGINEERING, INC. (A/E)
ENGINEERS • SURVEYORS • LABORATORIES • DRILLING
2045 W. WOODLAND • SPRINGFIELD, MISSOURI 65807 • PHONE (417) 866-2741
COA#E-137 • ENGINEER REGISTRATION # PE-16221 • NEIL S. BRADY

NEIL S. BRADY
LICENSED PROFESSIONAL ENGINEER
PE-16221
7-15-17



2 HANDICAP PARKING DETAIL
SW4 SCALE: 1" = 10'

CONTRACTOR SHALL FIELD VERIFY PROPOSED GRADES MATCH EXISTING PAVEMENT AT DRIVEWAY ENTRANCES. CONTRACTOR SHALL NOTIFY ENGINEER IF DISCREPANCY OCCURS.

SPECIAL NOTE: FIELD VERIFY SANITARY SEWER CONNECTION INVERT PRIOR TO ESTABLISHING FINAL FINISH FLOOR ELEVATION. REFER TO SITE UTILITIES PLAN.

EROSION CONTROL & MAINTENANCE PLAN NOTES:

1. RETAIN FLOATABLE WIND BLOWN MATERIALS ON SITE BY STORING ALL TRASH AND BUILDING MATERIAL WASTE IN ENCLOSURES UNTIL PROPER DISPOSAL AT OFF-SITE FACILITIES. CHECK ADJACENT AREAS DAILY AND PICK UP CONSTRUCTION WASTE MATERIALS AND DEBRIS THAT HAVE BLOWN OR WASHED OFF SITE.
2. PERMANENTLY STABILIZE ALL SURFACE AREA WITHIN AND ADJACENT TO THIS SITE THAT IS DISTURBED BY VEHICLES, GRADING AND OTHER CONSTRUCTION FOR THE PROPOSED FACILITY. STABILIZATION IS OBTAINED WHEN THE DISTURBED SURFACE IS COVERED WITH STRUCTURES, PAVING AND OR PERENNIAL VEGETATION HAVING A UNIFORM COVERAGE DENSITY OF AT LEAST 70%. STABILIZATION OF ALL DISTURBED AREA IS REQUIRED BEFORE TERMINATING MAINTENANCE AND REMOVAL OF EROSION CONTROL MEASURES.
3. CONTRACTORS SHALL INSPECT POLLUTION CONTROL MEASURES AT LEAST EVERY 14 DAYS AND WITHIN 24 HOURS AFTER A STORM EVENT OF 1/2 INCH OR GREATER. DAMAGED MEASURES THAT PROVE TO BE INEFFECTIVE SHALL BE REPLACED WITH MORE EFFECTIVE MEASURES OR ADDITIONAL MEASURES WITHIN SEVEN DAYS. REPEATED FAILURE OF A CONTROL MEASURE REQUIRES INSTALLATION OF A MORE SUITABLE DEVICE TO PREVENT DISCHARGE OF POLLUTANTS FROM THE CONSTRUCTION SITE.
4. INSTALLATION OF ADDITIONAL EROSION CONTROL MEASURES MAY BE REQUIRED BY THE CITY OR STATE. CONTRACTOR TO VERIFY REQUIREMENTS PRIOR TO BEGINNING ANY WORK ON PROJECT SITE.
5. CARE SHALL BE TAKEN TO MINIMIZE THE ENCROACHMENT OF SEDIMENT INTO ALL STORM DRAIN APPURTENANCES, PUBLIC STREETS, AND ONTO PRIVATE PROPERTY UNTIL IMPERVIOUS MATERIAL (ROAD/PARKING AREA SURFACE) IS APPLIED OR UNTIL PROPOSED LANDSCAPE HAS BEEN ESTABLISHED.
6. REFER TO 10/C3 FOR SILT FENCE CONSTRUCTION.
7. ALL GRASS SLOPES WHICH EXCEED 3:1 (H:V) SHALL UTILIZE CONTECH CONSTRUCTION PRODUCTS PERMANENT TURF REINFORCEMENT MATS TRM 450 OR APPROVED EQUAL. MATS SHALL BE INSTALLED PER MANUFACTURER'S SPECIFICATIONS AND STANDARDS. CONTRACTOR SHALL COORDINATE INSTALLATION INSPECTION WITH MANUFACTURER.

PIPES NOTES:

1. THE APPROVED PIPE MATERIALS ARE REINFORCED CONCRETE PIPE (RCP), HIGH DENSITY POLYETHYLENE (HDPE), N-12 CORRUGATED METAL PIPE (CMP).
2. ALL PIPE IS TO BE INSTALLED PER THE MANUFACTURER'S REQUIREMENTS AND MEET COVER REQUIREMENTS PER THE MANUFACTURER.

GENERAL NOTES:

- A. REFER TO PROJECT MANUAL FOR ADDITIONAL REQUIREMENTS.
- B. SITE CONDITIONS BASED UPON SURVEY SUBMITTED BY OWNER. FIELD VERIFY EXISTING CONDITIONS BY DETAILED SITE INSPECTION PRIOR TO SUBMITTING BID AND BEGINNING CONSTRUCTION.
- C. FIELD VERIFY SANITARY SEWER SERVICE CONNECTION INVERT PRIOR TO ESTABLISHING FINAL FINISH FLOOR ELEVATION.
- D. COORDINATE WORK WITH OTHER SITE RELATED DEVELOPMENT DRAWINGS.

CONSTRUCTION EGRESS NOTES:

1. CONSTRUCTION EGRESS SHALL BE 25" MINIMUM WIDTH AND 30" MINIMUM LENGTH AND 6" MIN THICKNESS OF STONE (1.5"-3.5") COARSE AGGREGATE WITH GEOTEXTILE UNDERLINER. REFER TO THE CITY OR STATE FOR ANY ADDITIONAL REQUIREMENTS.
2. THE EXIT SHALL BE MAINTAINED IN A CONDITION WHICH WILL PREVENT TRACKING OR FLOW OF MUD ONTO PUBLIC RIGHT-OF-WAY. THIS MAY REQUIRE PERIODIC TOP DRESSING WITH 1.5-3.5 INCH STONE, AS CONDITIONS DEMAND, AND REPAIR AND/OR CLEAN OUT OF ANY STRUCTURE USED TO TRAP SEDIMENT. ALL MATERIALS SPILLED, DROPPED, WASHED, OR TRACKED FROM VEHICLES OR SITE ONTO ROADWAYS OR INTO STORM DRAINS MUST BE REMOVED IMMEDIATELY.
3. WHEELS MUST BE CLEANED TO REMOVE MUD PRIOR TO ENTRANCE ONTO PUBLIC RIGHT-OF-WAY. WHEN WASHING IS REQUIRED, IT SHALL BE DONE ON AN AREA WITH CRUSHED STONE WHICH DRAINS INTO AN APPROVED SEDIMENT TRAP OR SEDIMENT BASIN LOCATED PER THE CITY OR STATE REQUIREMENTS.

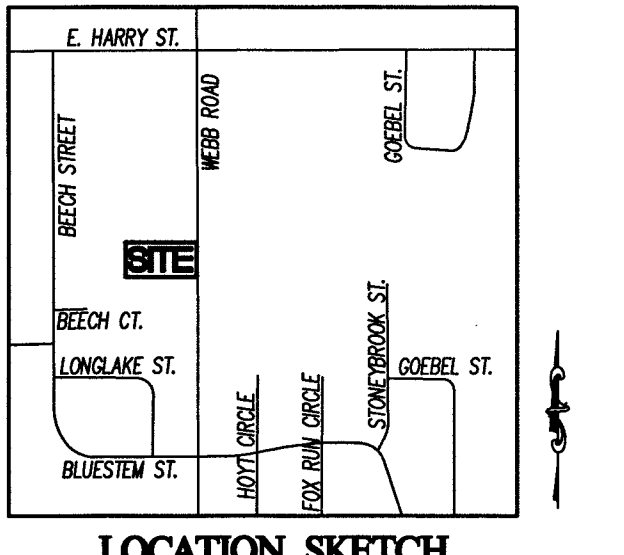
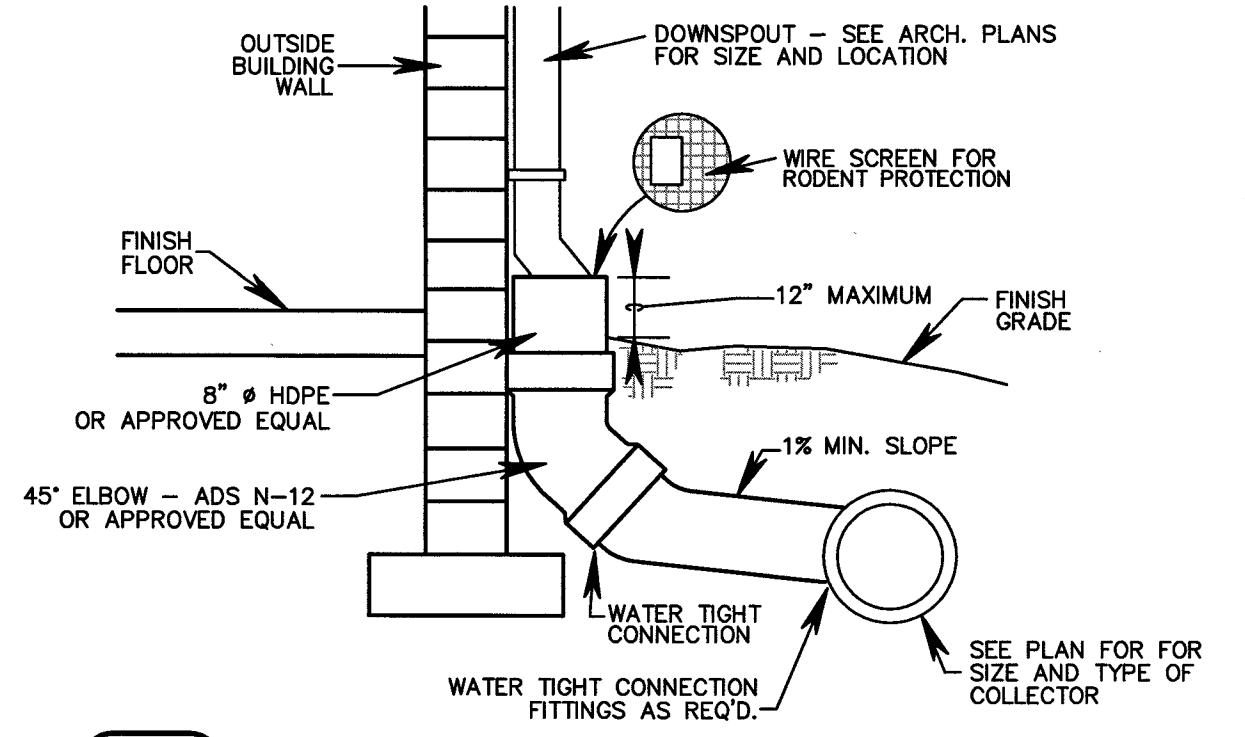
STAGES OF CONSTRUCTION:

1. CONTRACTOR TO PERFORM DETAILED SITE INSPECTION TO LOCATE ALL EXISTING UTILITIES AND VERIFY ANY POSSIBLE CONFLICTS WITH PROPOSED IMPROVEMENTS PRIOR TO BEGINNING ANY CONSTRUCTION. CONTACT OWNER WITH ANY CONFLICTS. MONTH 1
2. INSTALLATION OF CONSTRUCTION ENTRANCE. MONTH 1
3. INSTALLATION OF EROSION CONTROL FENCE. MONTH 1
4. DEMOLITION OF EXISTING SITE IMPROVEMENTS. MONTH 1
5. REMOVAL OF EXISTING PAVEMENT ON THE SITE. MONTH 1
6. INSTALLATION OF ALL STORMWATER DRAINAGE IMPROVEMENTS. MONTH 1
7. ROUGH GRADING. MONTH 1 & MONTH 2
8. CONSTRUCTION OF NEW SITE IMPROVEMENTS. MONTH 2
9. FINAL GRADING. MONTH 3
10. PLACEMENT OF FINAL LANDSCAPING ITEMS AND SOD. MONTH 3
11. REMOVAL OF EROSION CONTROL FENCE. MONTH 3

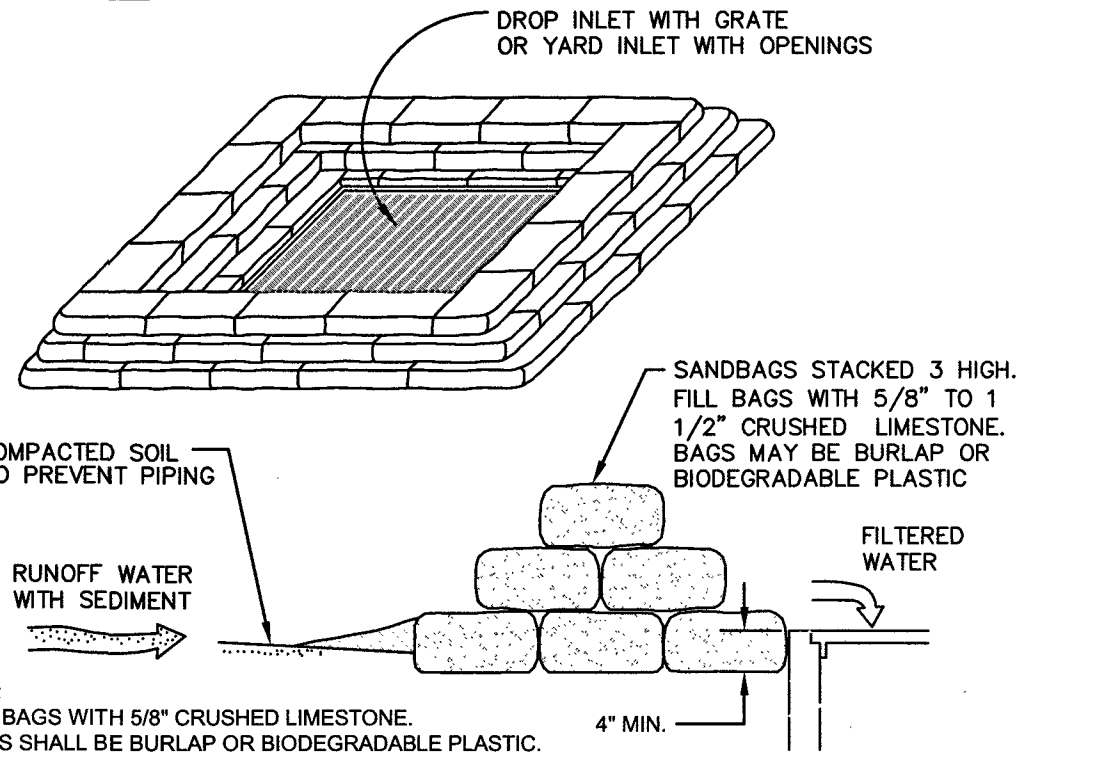
SITE EXCAVATION REQUIREMENTS:

1. A GEOTECHNICAL ANALYSIS HAS BEEN PERFORMED ON THIS SITE. REFER TO PROJECT MANUAL.
2. FOLLOW GEOTECHNICAL ANALYSIS RECOMMENDATION FOR SITE EXCAVATION.
3. REFER TO STRUCTURAL DRAWINGS FOR BUILDING EXCAVATION REQUIREMENTS.

5 DOWNSPOUT COLLECTOR
SW4 SCALE: NOT TO SCALE



LOCATION SKETCH
SEC. 32, T27N, R2E
NOT TO SCALE



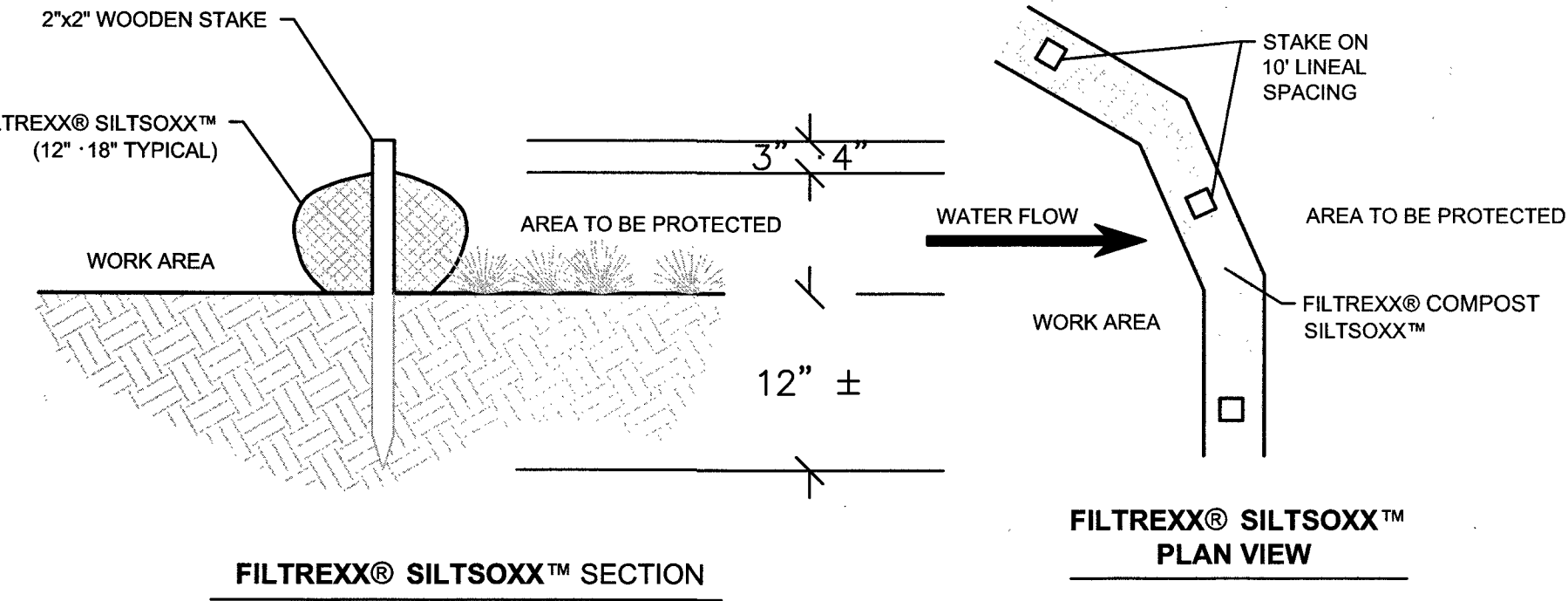
- NOTES:
1. FILL BAGS WITH 5/8" CRUSHED LIMESTONE.
 2. BAGS SHALL BE BURLAP OR BIODEGRADABLE PLASTIC.
 3. BAGS SHALL BE INSPECTED AND REPLACED AS NEEDED.

3 INLET SEDIMENT FILTER
SW4 SCALE: NOT TO SCALE

CONTRACTOR IS RESPONSIBLE FOR DRIVEWAY PERMIT (PAVE CUT REQUEST) CONTACT CITY OF WICHITA ENGINEERING FOR DETAILS: 316-268-4501

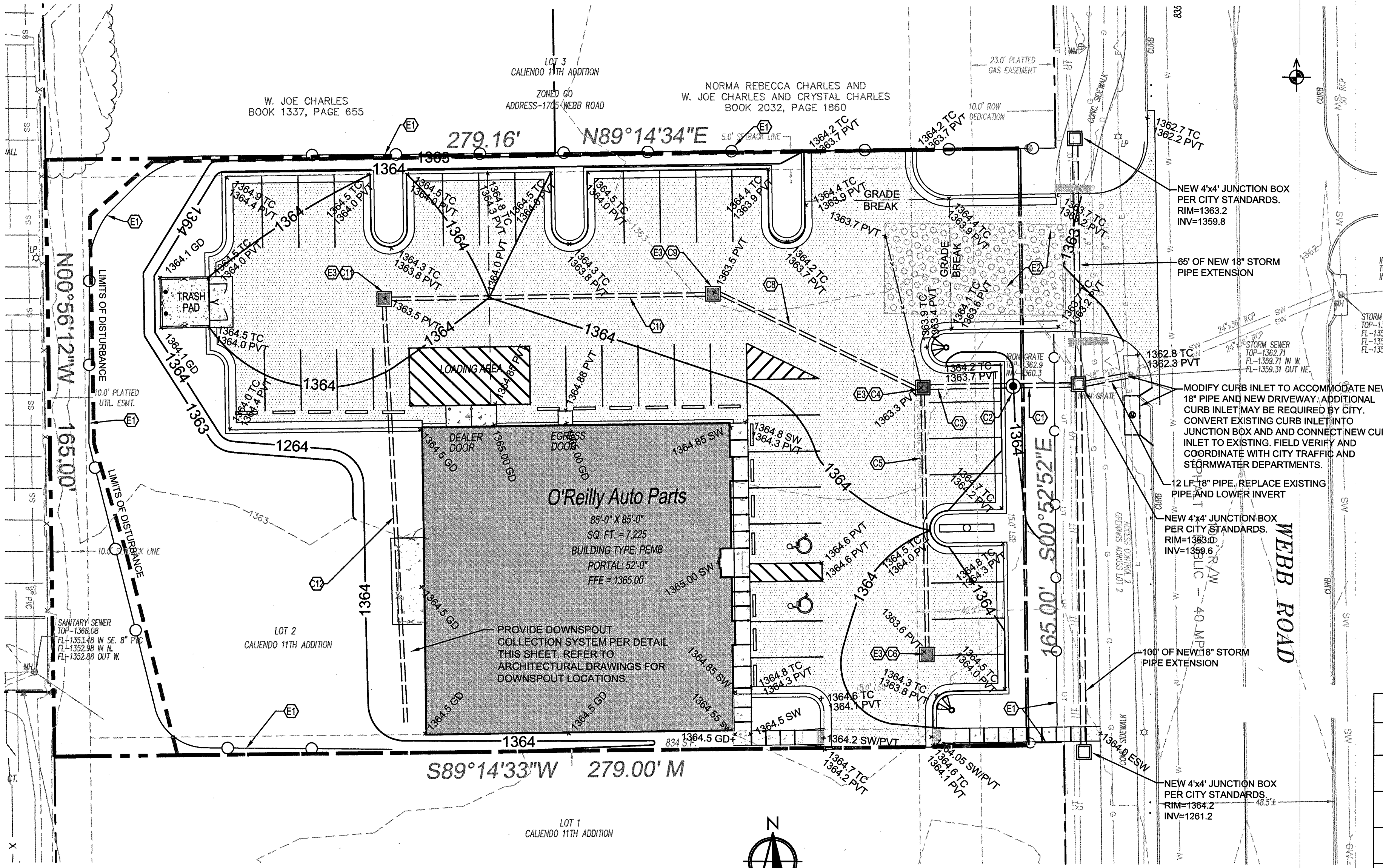
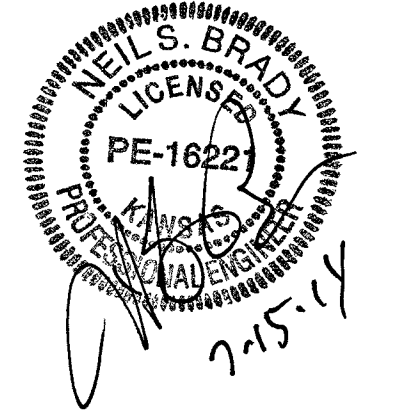
KEY NOTES:

- E1 LIMITS OF TEMPORARY EROSION CONTROL FENCE. REFER TO DETAIL 4/SW4.
- E2 INSTALL CONSTRUCTION EGRESS. SEE CONSTRUCTION EGRESS NOTES.
- E3 INSTALL INLET SEDIMENT FILTER. SEE DETAIL 3/SW4.
- C1 INSTALL 15 LF OF 12" Ø PIPE. SEE PIPES NOTES.
- C2 INSTALL WATER QUALITY UNIT. SEE SHEET SW3.
- C3 INSTALL 22 LF OF 12" Ø PIPE. SEE PIPES NOTES.
- C4 INSTALL 4"x4" AREA INLET. RIM=1363.3 INV=1359.4 REFER TO DETAIL 2/SW3.
- C5 INSTALL 70 LF OF 12" Ø PIPE. SEE PIPES NOTES.
- C6 INSTALL 4"x4" AREA INLET. RIM=1363.6 INV=1360.8 REFER TO DETAIL 2/SW3.
- C7 NOT USED.
- C8 INSTALL 60 LF OF 12" Ø PIPE. SEE PIPES NOTES.
- C9 INSTALL 4"x4" AREA INLET. RIM=1363.5 INV=1360.2 REFER TO DETAIL 2/SW3.
- C10 INSTALL 87 LF OF 12" Ø PIPE. SEE PIPES NOTES.
- C11 INSTALL 4"x4" AREA INLET. RIM=1363.5 INV=1359.8 REFER TO DETAIL 2/SW3.
- C12 INSTALL 118 LF OF 8" Ø PIPE FOR DOWNSPOUT COLLECTION SYSTEM. SEE PIPES NOTES. SEE DETAIL 5/SW4.

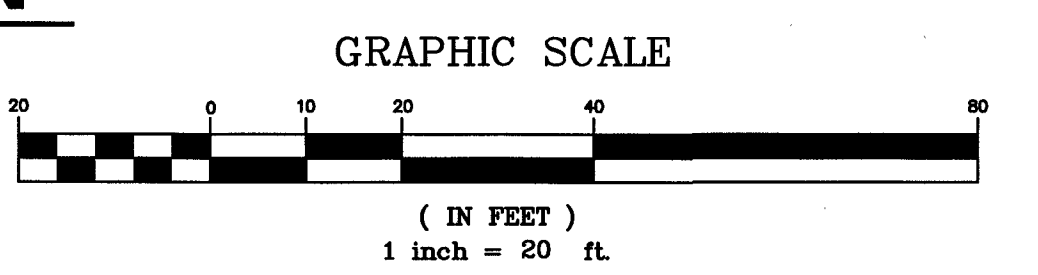


- NOTE:
1. ALL MATERIAL TO MEET FILTRIXX® SPECIFICATIONS OR APPROVED EQUAL.
 2. SILTSOXX™ COMPOST/ROCK/SEED FILL TO MEET APPLICATION REQUIREMENTS.
 3. SILTSOXX™ DEPICTED IS FOR MINIMUM SLOPES. GREATER SLOPES MAY REQUIRE LARGER SOCKS PER THE ENGINEER.
 4. COMPOST MATERIAL TO BE DISPERSED ON SITE, AS DETERMINED BY ENGINEER.

4 INLET SEDIMENT FILTER
SW4 SCALE: NOT TO SCALE



1 SITE GRADING AND EROSION CONTROL PLAN
SW4 SCALE: 1" = 20'



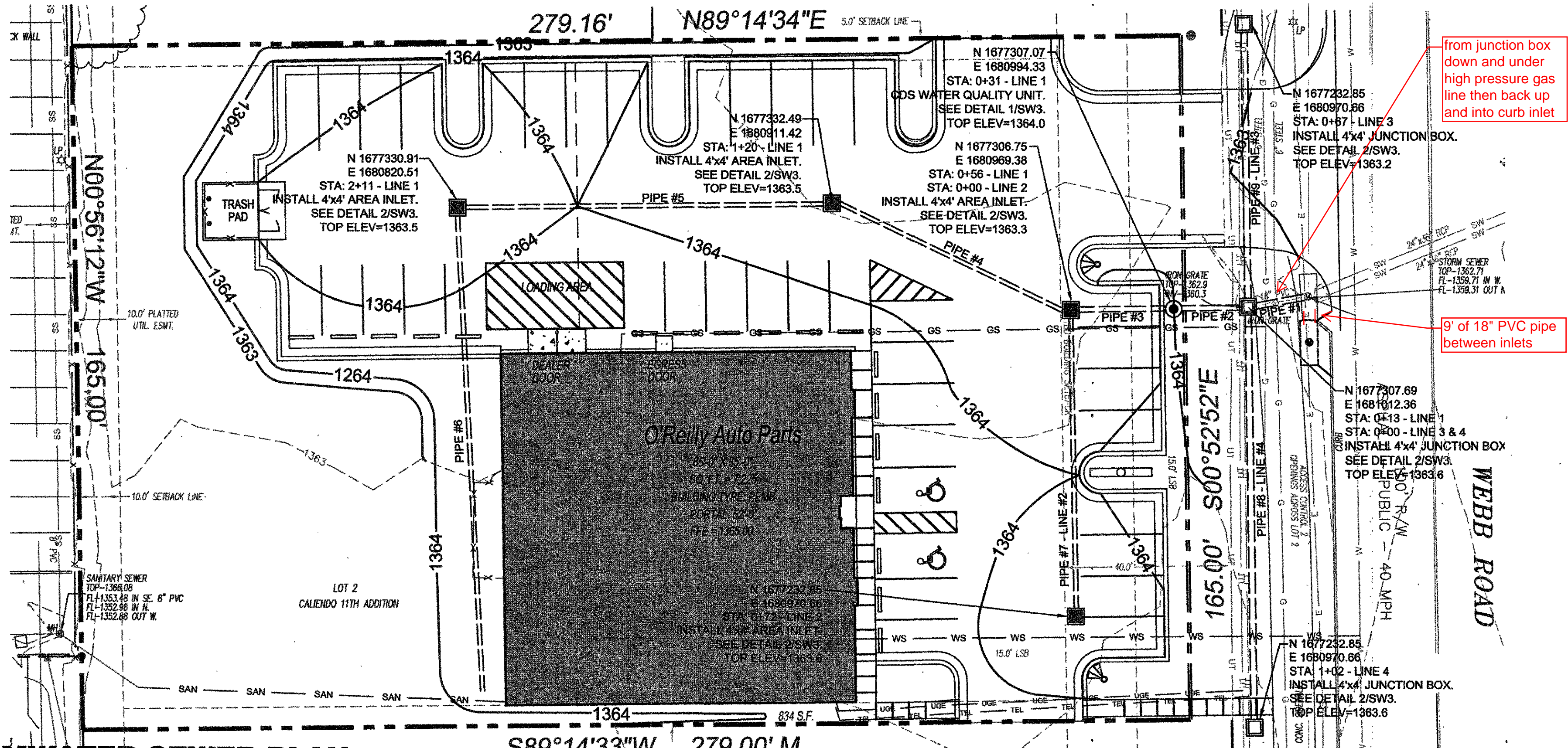
CALL BEFORE YOU DIG - DRILL - BLAST
800-344-7233
(DIG-SAFE)
(316) 687-3753
(FAX)
KANSAS ONE CALL SYSTEM, INC.

REFER TO SURVEY (SV1) FOR EXISTING CONDITION SYMBOLS LEGEND AND SITE CONTROL.		NEW SPOT ELEVATIONS	
		LIST	ABBREVIATION
---	EXISTING GRADE LINES	GRADE	NONE
---	PROPOSED NEW GRADE LINES	SIDEWALK	SW
---	NEW BUILDING CONSTRUCTION	TOP OF WALL	TW
---	NEW PAVEMENT	TOP OF CURB	TC
---	NEW SIGN LOCATION	TOP OF PAVEMENT	PVT
---	NEW CONCRETE PAVING BLOCK (DIG-SAFE)	NEW GRADE	GD
---	TEMPORARY EROSION CONTROL FENCE	CONCRETE	CONC
---	SURFACE FLOW ARROW	EXISTING TOP OF CURB	ETC
---		EXISTING GRADE	EGD
---		EXISTING PAVEMENT	EPV
---		EXISTING SIDEWALK	ESW
---		FLOW LINE	FL
---		TOP OF BERM	TOP

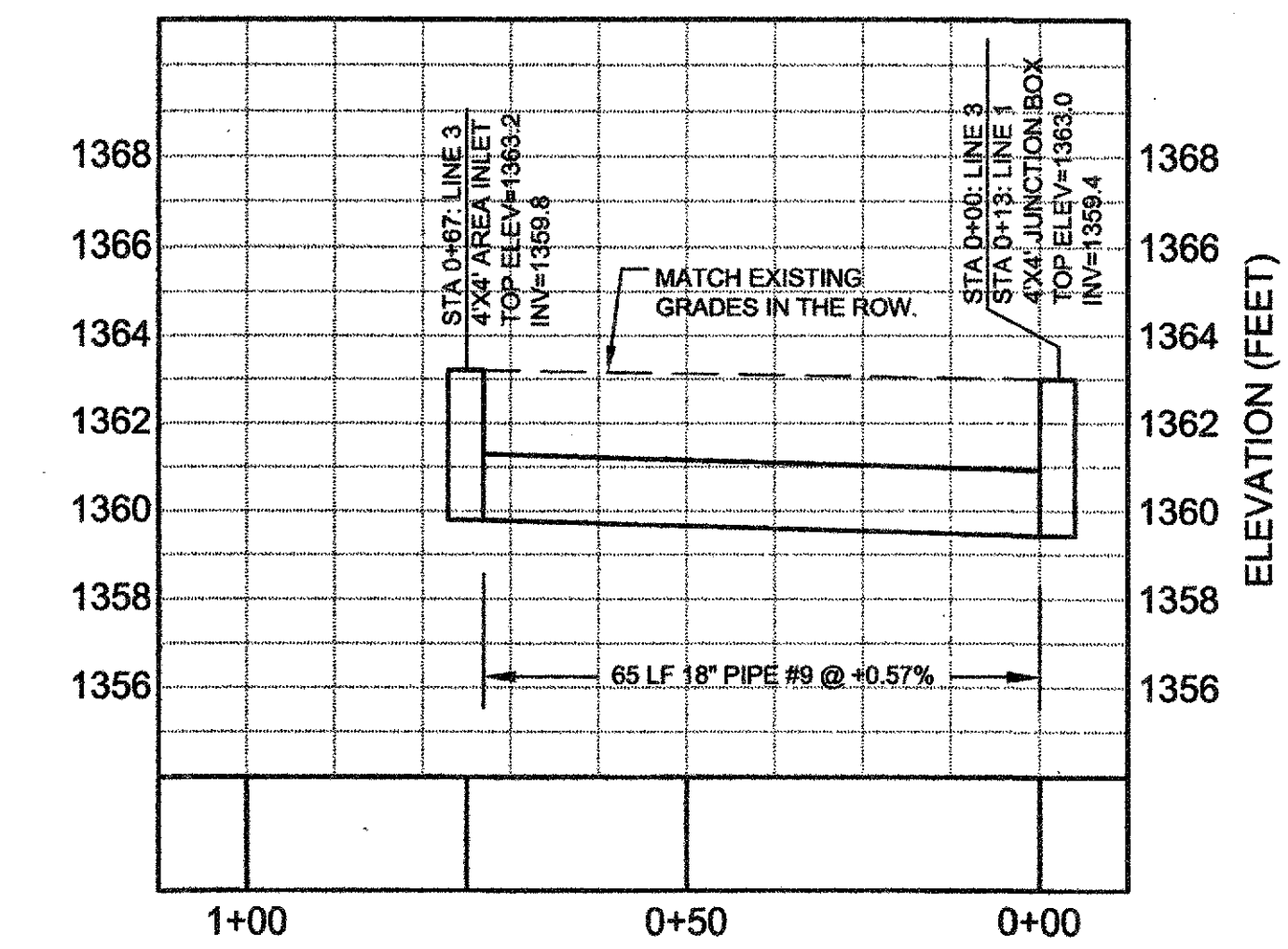
STORM SEWER IMPROVEMENTS

TO SERVE
LOT 2, TRACT 1, CALIENDO 11TH ADDITION
PROJECT NO. 0253 PPD (607861)
CITY OF WICHITA, KANSAS
GARY JANZEN, P.E. - CITY ENGINEER

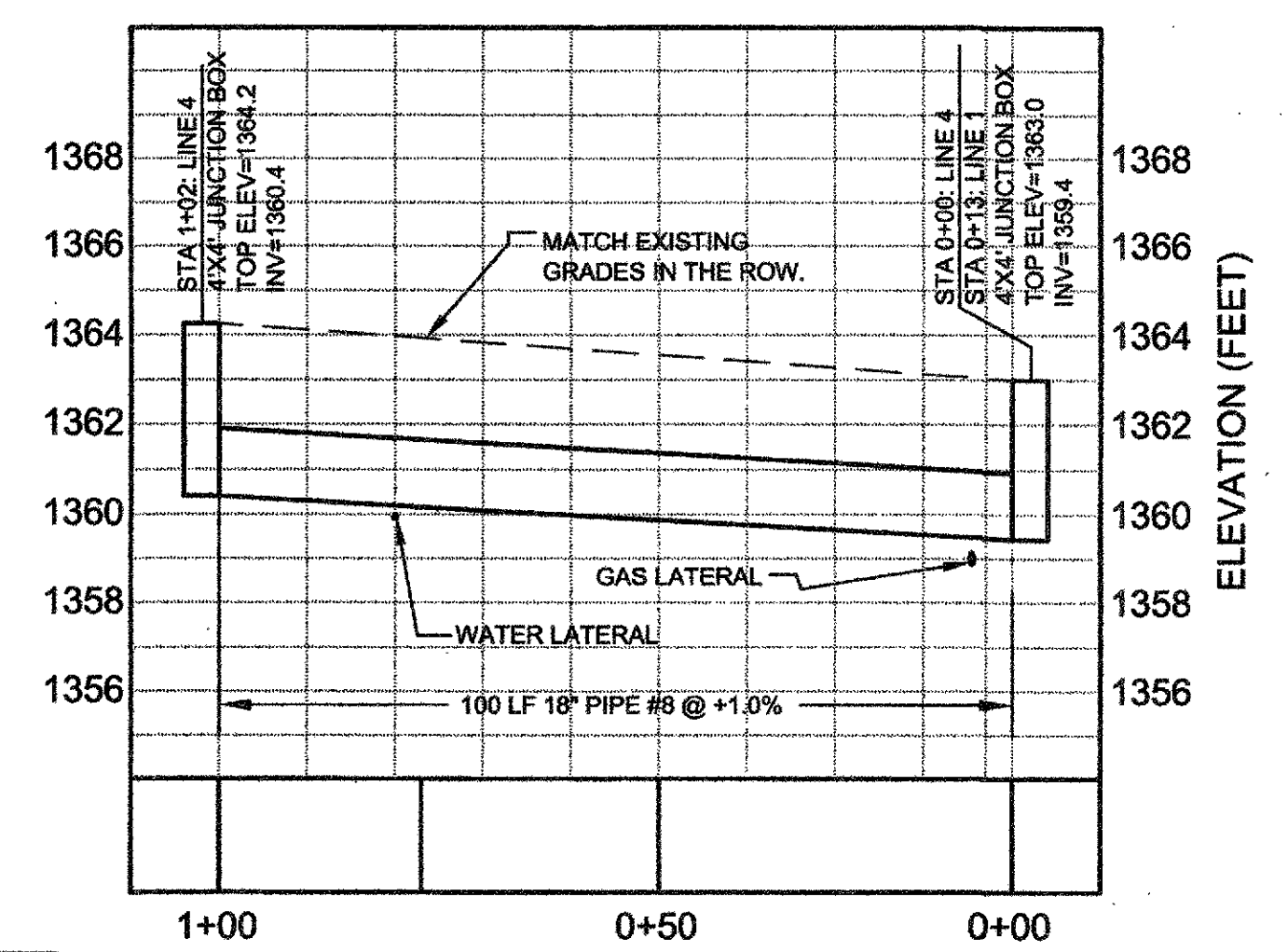
ANDERSON ENGINEERING, INC. (A/E)
ENGINEERS • SURVEYORS • LABORATORIES • DRILLING
2045 W. WOODLAND • SPRINGFIELD, MISSOURI 65807 • PHONE (417) 886-2741
COA# E-137 • ENGINEER REGISTRATION # PE-16221 • NEIL S. BRADY



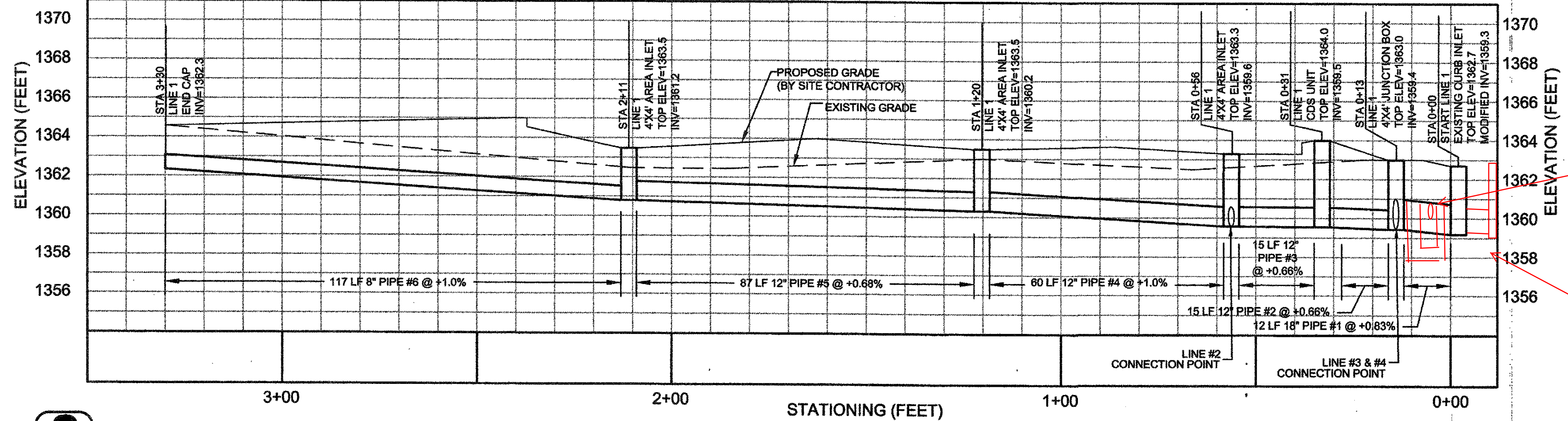
1 STORMWATER SEWER PLAN
SW2 SCALE: 1" = 20'



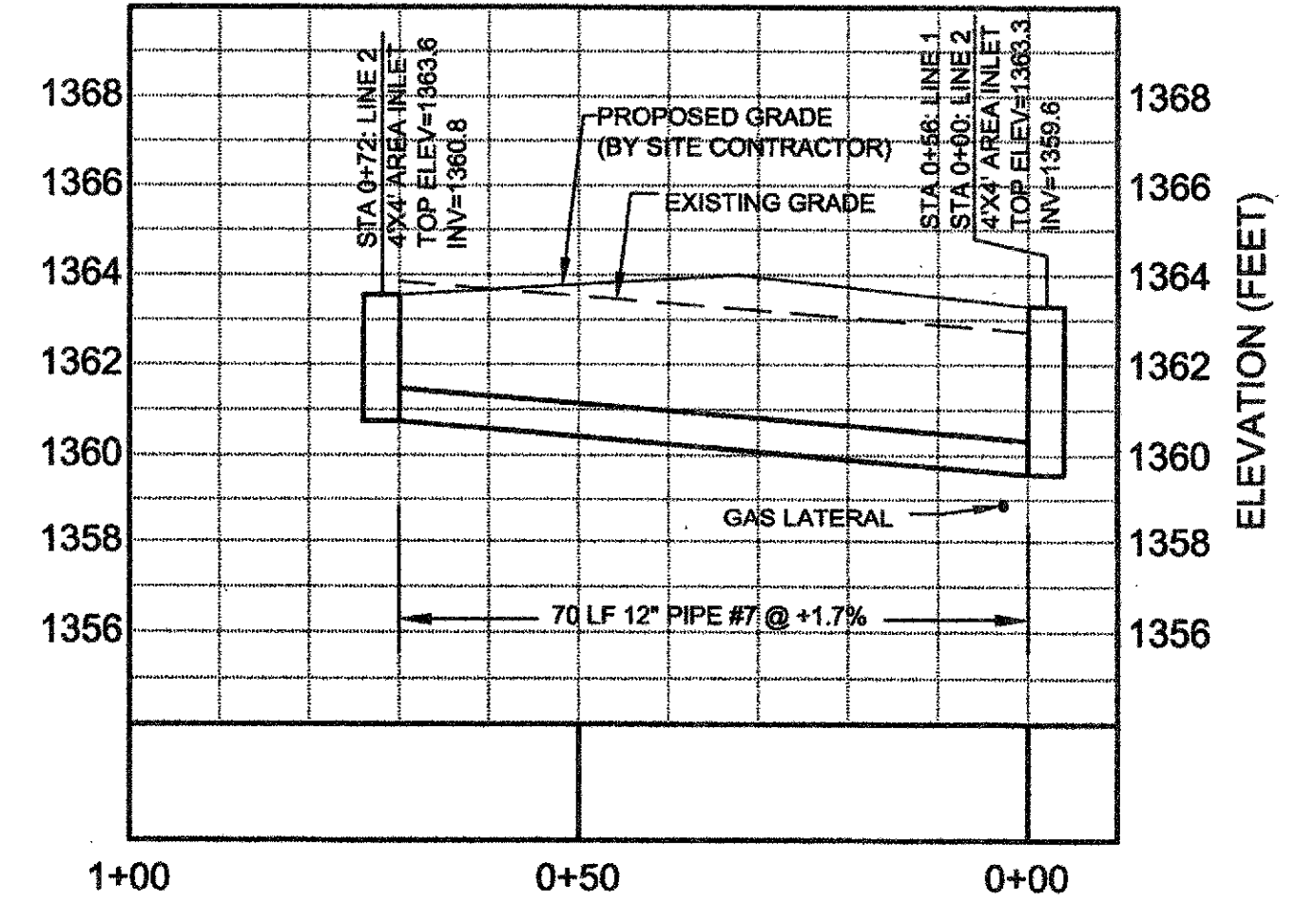
4 LINE 3 - STORMWATER SEWER PROFILE
SW2 HORIZONTAL SCALE: 1" = 20' VERTICAL SCALE: 1" = 5'



5 LINE 4 - STORMWATER SEWER PROFILE
SW2 HORIZONTAL SCALE: 1" = 20' VERTICAL SCALE: 1" = 5'

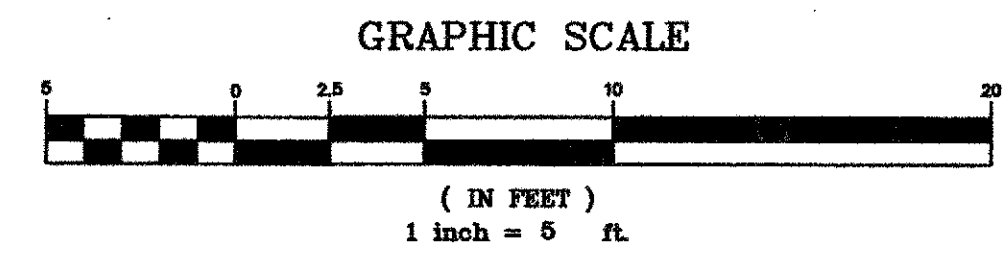
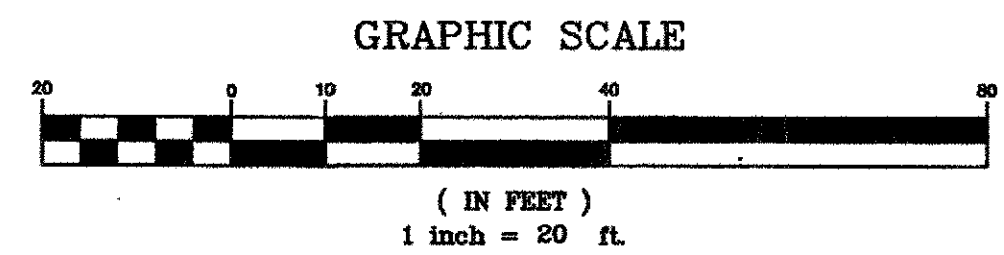


2 LINE 1 - STORMWATER SEWER PROFILE
SW2 HORIZONTAL SCALE: 1" = 20' VERTICAL SCALE: 1" = 5'



3 LINE 2 - STORMWATER SEWER PROFILE
SW2 HORIZONTAL SCALE: 1" = 20' VERTICAL SCALE: 1" = 5'

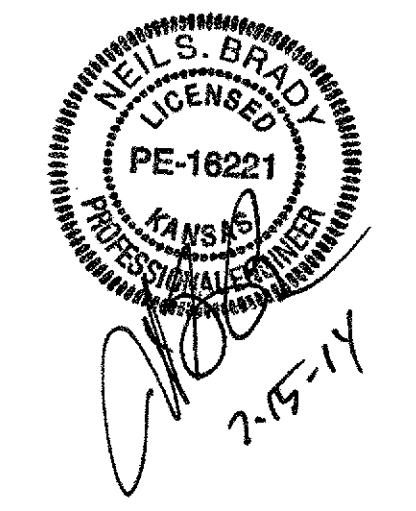
CAUTION VERIFY EXISTING UTILITIES!
 PROVIDE 18" MIN. CLEARANCE BETWEEN SEWER AND
 STORM WATER PIPES. CONTACT ENGINEER IF
 DISCREPANCIES OCCUR.



AS BUILTS

KEMILLER
 ENGINEERING PA

117 E. Lewis,
 Wichita, KS 67202 (316)264-0242



STORM SEWER IMPROVEMENTS

TO SERVE
LOT 2, TRACT 1, CALIENDO 11TH ADDITION
PROJECT NO. 0253 PPD (607861)
CITY OF WICHITA, KANSAS
GARY JANZEN, P.E. - CITY ENGINEER

KANSAS ONE-CALL SYSTEMS, INC.

CALL BEFORE YOU
 DIG - DRILL - BLAST
 800-344-7233
 (DIG-SAFE)
 (316) 687-3753
 (FAX)

KANSAS ONE CALL SYSTEM, INC.

ANDERSON ENGINEERING, INC.

ENGINEERS • SURVEYORS • LABORATORIES • DRILLING

2045 W. WOODLAND • SPRINGFIELD, MISSOURI 65807 • PHONE (417) 866-2741
 CO.# E-137 • ENGINEER REGISTRATION # PE-16221 • NEIL S. BRADY

SWZ