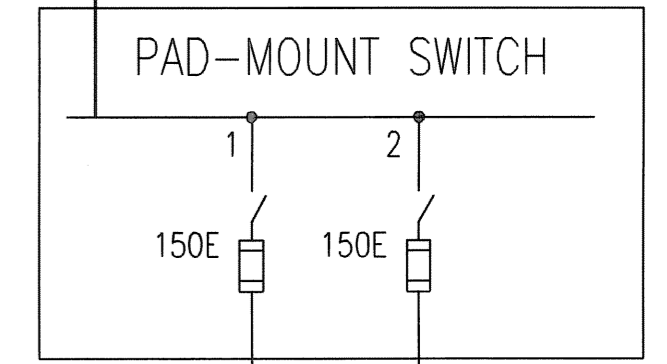
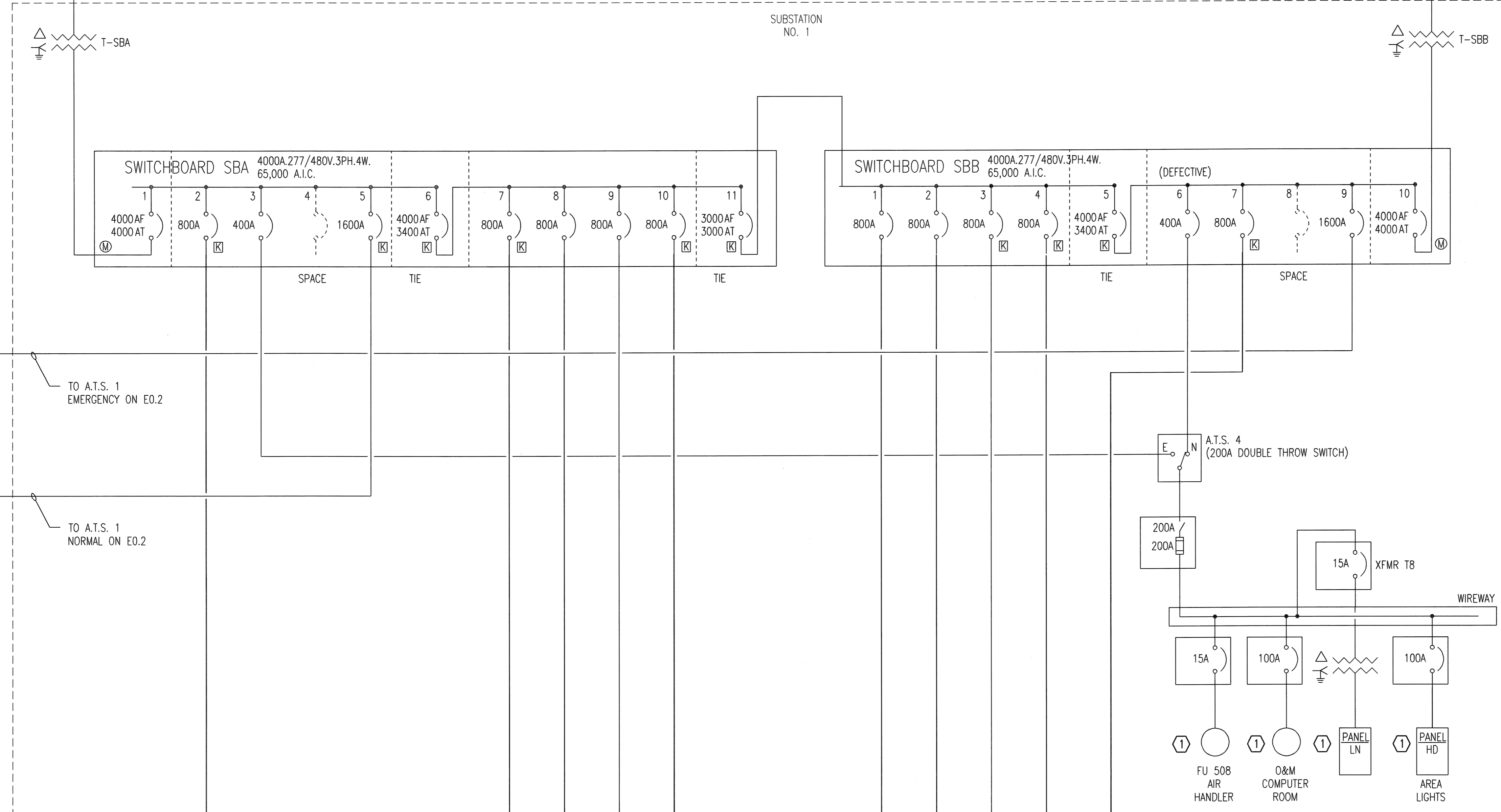


TO PARALLELING SWITCHGEAR. SEE SHEET E0.13 FOR CONTINUATION.



TO T-SBC ON E0.9
TO PAD MOUNTED SWITCH ON E0.9



GENERAL ONE-LINE DIAGRAM NOTES:

1. UNLESS OTHERWISE NOTED, ALL CIRCUIT BREAKERS AND/OR SWITCHES ARE THREE POLE.
2. ALL ELECTRICAL EQUIPMENT AND WIRING SHOWN IN A LIGHT LINE, IS EXISTING TO REMAIN.

KEYED NOTES:

- ① CRITICAL LOAD ON STANDBY POWER.

TO A.T.S. 1
EMERGENCY ON E0.2

TO A.T.S. 1
NORMAL ON E0.2

A.T.S. 4
(200A DOUBLE THROW SWITCH)

200A
200A

15A XFMR T8

15A

100A

100A

① FU 508
AIR HANDLER

① O&M
COMPUTER ROOM

① PANEL
LN

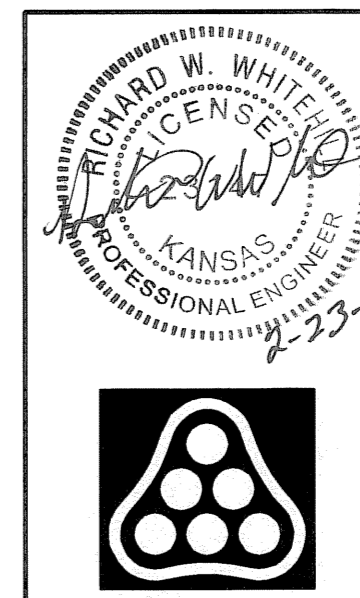
① PANEL
HD
AREA LIGHTS

1 EXISTING ONE-LINE DIAGRAM
NOT TO SCALE

TO MCC-G1 ON E0.7
TO MCC-K ON E0.3
TO MCC-E ON E0.6
TO A.T.S. 2
EMERGENCY ON E0.5
TO MCC-F2 ON E0.4

TO MCC-F1 ON E0.4
TO MCC-G2 ON E0.7
TO A.T.S. 2 NORMAL
ON E0.5
TO MCC-D ON E0.8
TO MDP ON E0.2

Saved 02-03-2015 7:00:00 AM by CJV
 File Path: \\s01\proj\414229\001\Drawings\E0.1-EXISTING ONE-LINE DIAGRAM
 User: \\s01\proj\414229\001\Drawings\E0.1-EXISTING ONE-LINE DIAGRAM



No.	Revision	By	Date

CITY OF WICHITA, KANSAS
EXISTING ONE-LINE DIAGRAM

WWTP #2 EMERGENCY POWER PROJECT
C.O.W. PROJECT NO. 468-84956

PEC PROFESSIONAL ENGINEERING CONSULTANTS, P.A.
303 SOUTH TOPEKA WICHITA, KS 67202
316-262-2691 www.pec1.com

Designed by RWW	Job No. 34-14229-001-0042	Sht. E0.1 of 36
Drawn by CJV	Date 2/23/15	