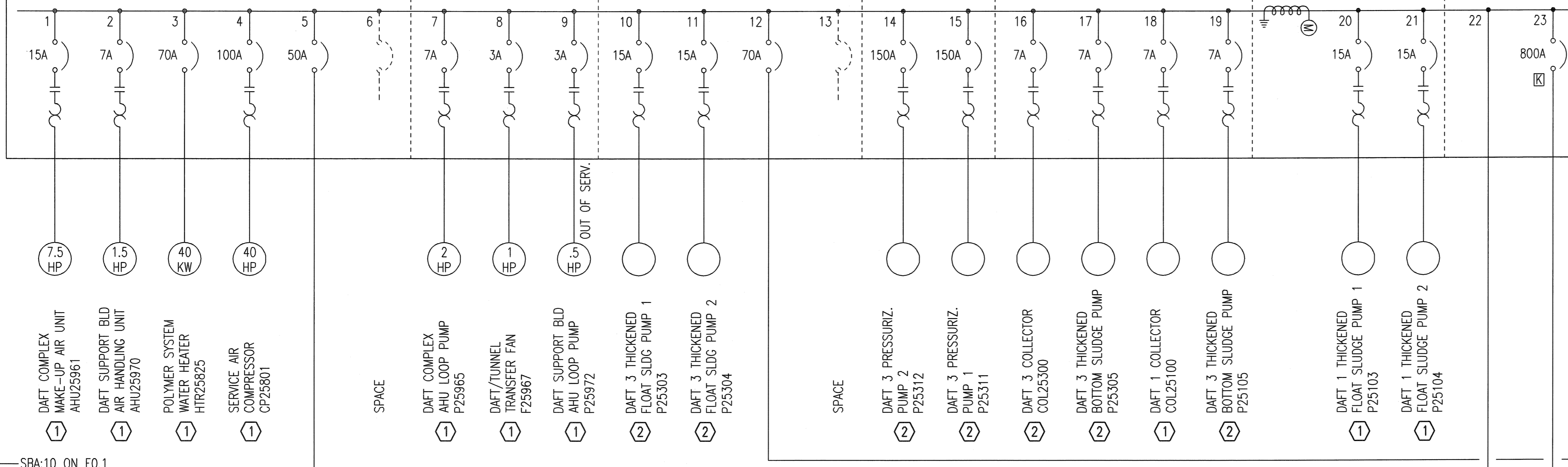
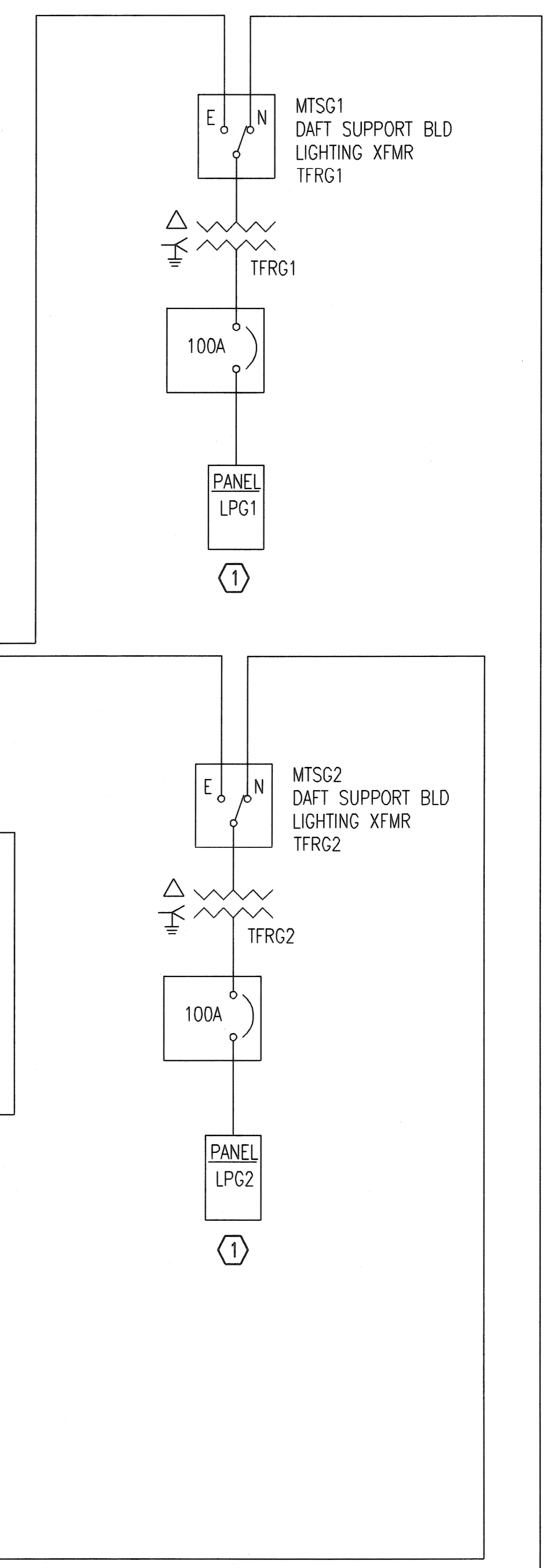
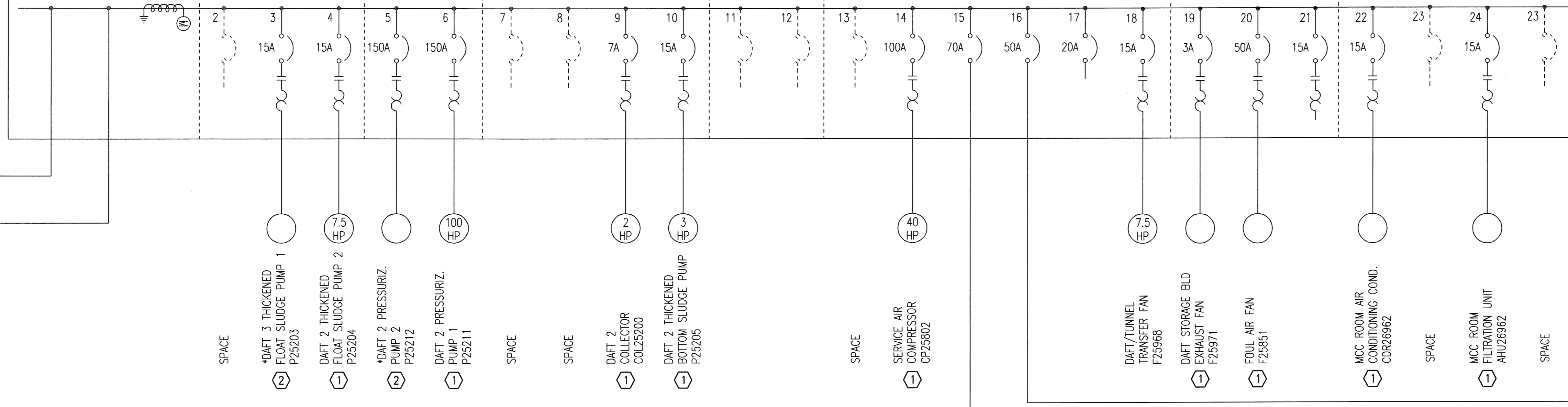


DAFT BUILDING

MOTOR CONTROL CENTER MCC G1 800A.480V.3PH.3W.



MOTOR CONTROL CENTER MCC G2 800A.480V.3PH.3W.



**1** EXISTING ONE-LINE DIAGRAM  
 NOT TO SCALE

GENERAL ONE-LINE DIAGRAM NOTES:

- UNLESS OTHERWISE NOTED, ALL CIRCUIT BREAKERS AND/OR SWITCHES ARE THREE POLE.
- ALL ELECTRICAL EQUIPMENT AND WIRING SHOWN IN A LIGHT LINE, IS EXISTING TO REMAIN.

KEYED NOTES:

- (1) CRITICAL LOAD ON STANDBY POWER.
- (2) REDUNDANT LOAD ON STANDBY POWER.

Saved: 01-31-2015 12:33:06 PM by CJV  
 Plot Scale: 1:1 02-24-2015 04:45:54 AM by CHRIS VALL  
 U:\Wichita-Facility\2014\14229\001\Electrical\Drawings\EO.7 EXISTING ONE-LINE DIAGRAM

	Revision		By	Date
	CITY OF WICHITA, KANSAS			
	<b>EXISTING ONE-LINE DIAGRAM</b>			
	WWP #2 EMERGENCY POWER PROJECT C.O.W. PROJECT NO. 468-84956			
PROFESSIONAL ENGINEERING CONSULTANTS, P.A. 303 SOUTH TOPEKA WICHITA, KS 67202 316-262-2891 www.pec1.com		Designed by RWW	Job No. 34-14229-001-0042	Sht. E0.7 of 36
Drawn by CJV		Date 2/23/15		