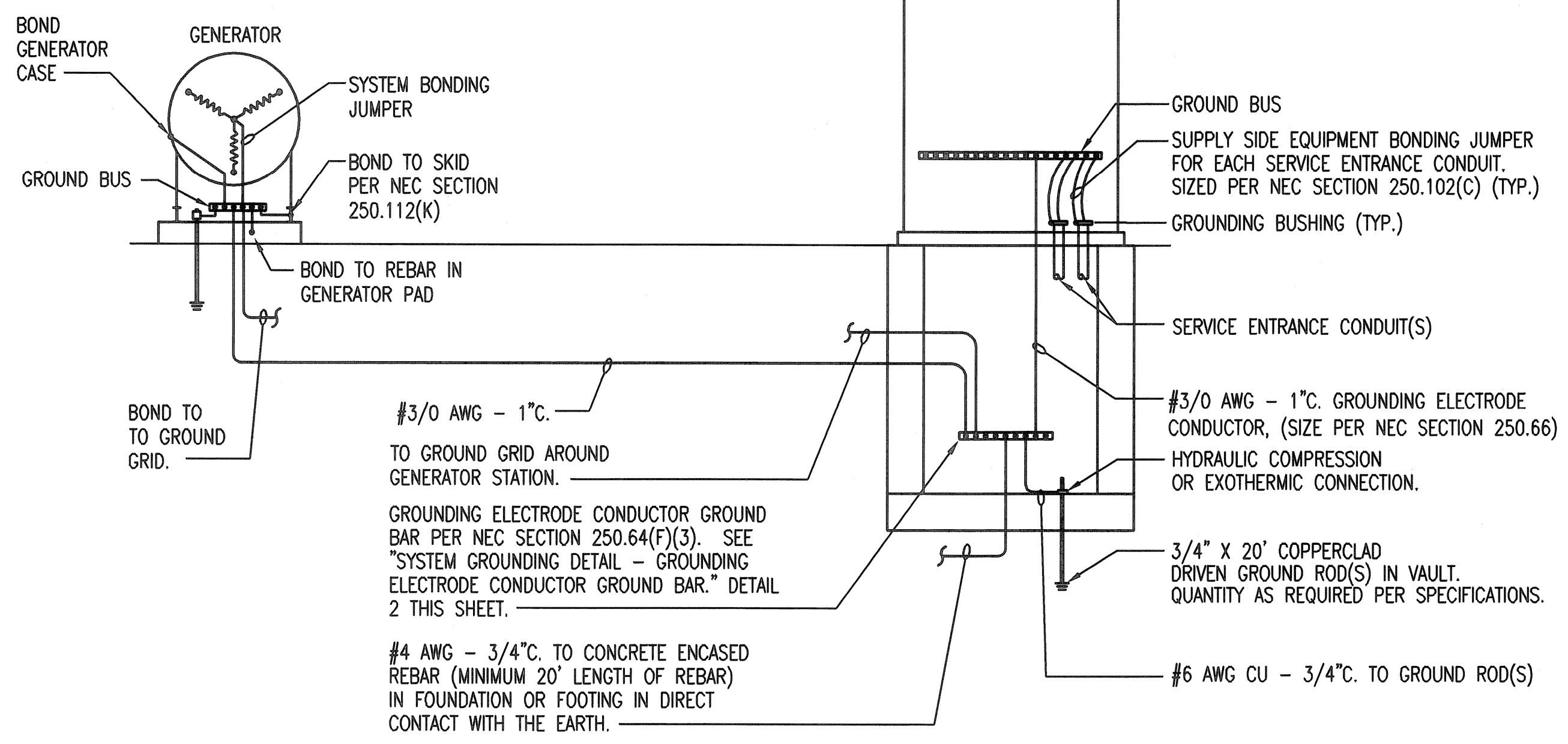


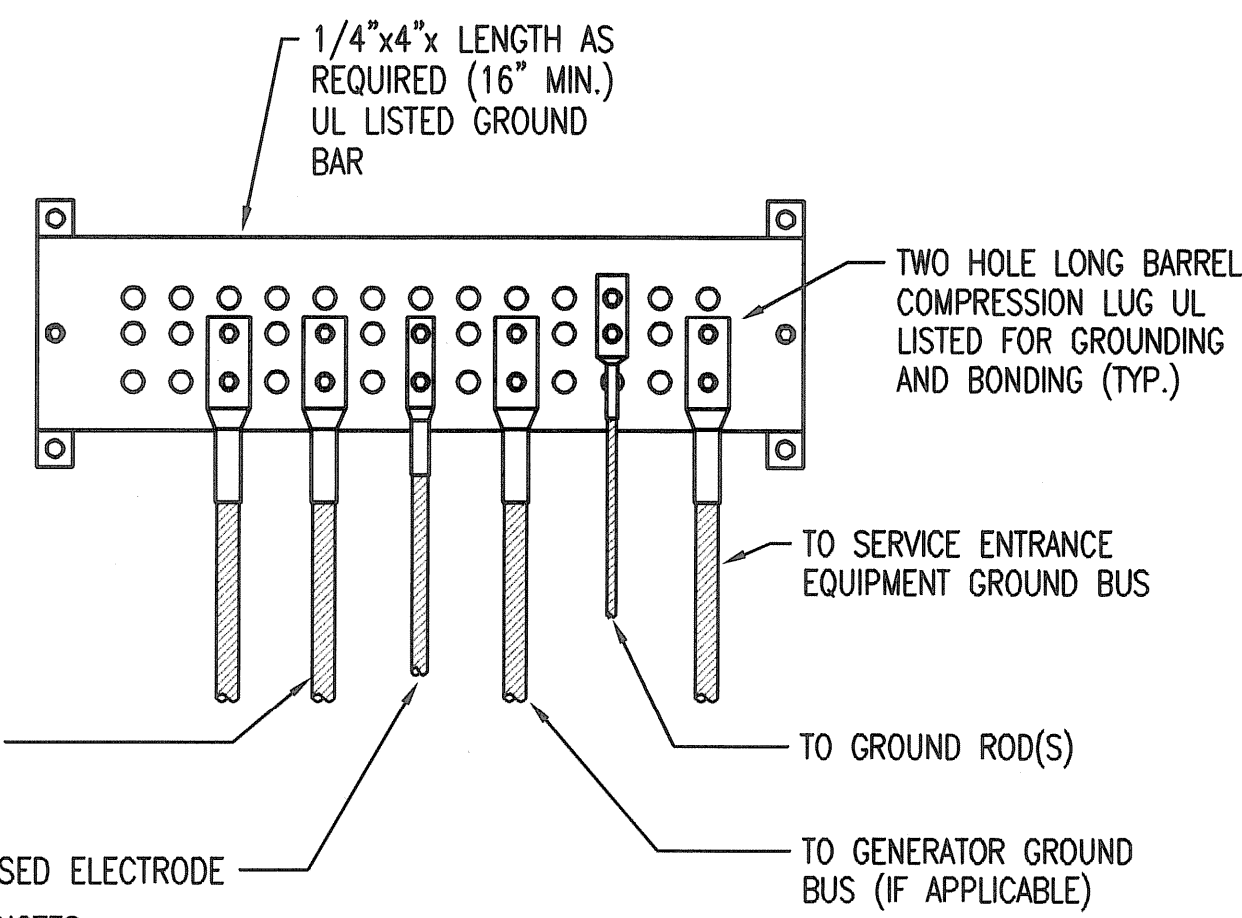
NOTE:
TYPICAL OF (2) GENERATORS.



NOTES:

1. PROVIDE OTHER GROUNDING CONNECTIONS AS SPECIFIED IN NEC SECTION 250.50.
2. LABEL EACH GROUNDING ELECTRODE CONDUCTOR AND BONDING JUMPER.
3. WHERE CONDUCTORS ARE ROUTED IN FERROUS CONDUIT, BOND BOTH ENDS OF THE CONDUIT TO THE CONDUCTOR.

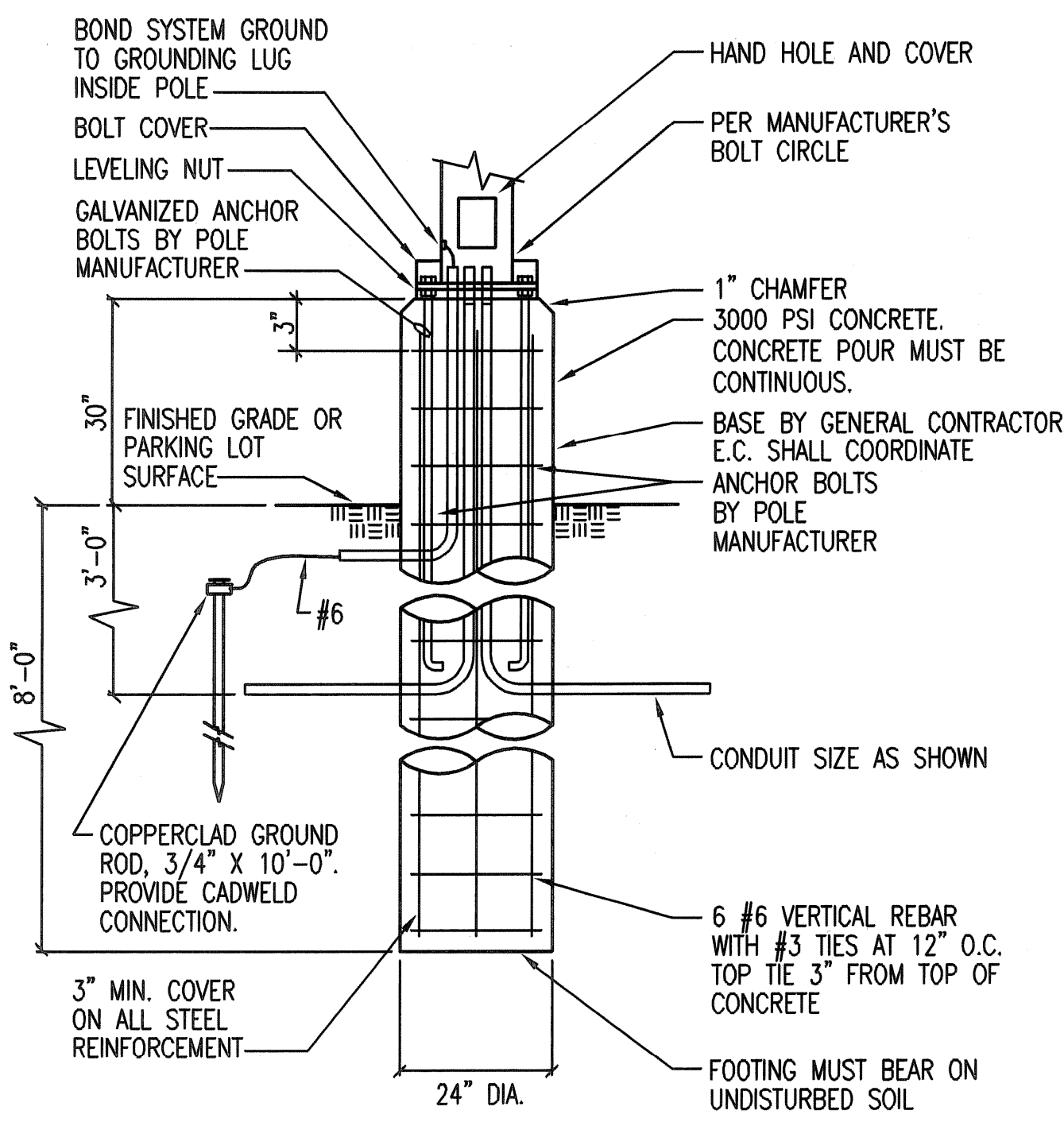
1 SYSTEM GROUNDING DETAIL
NO SCALE



NOTES:

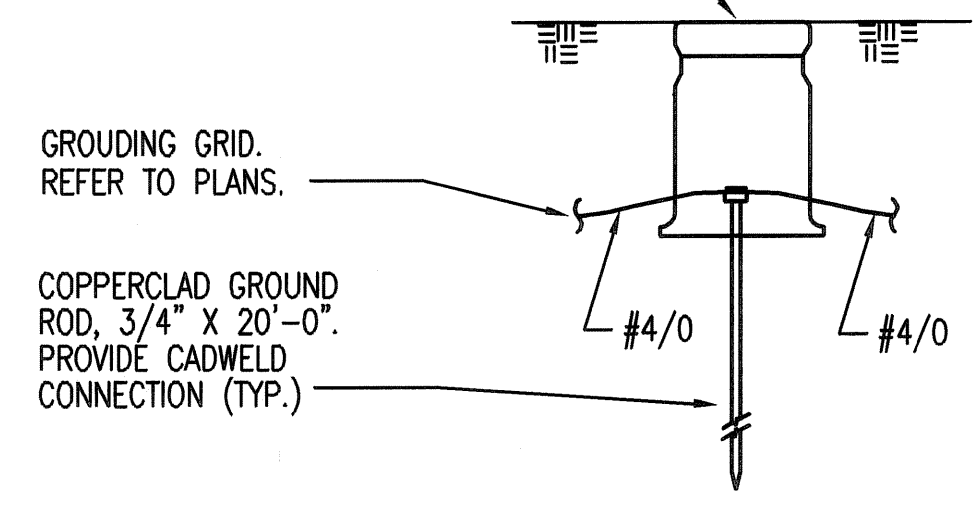
1. PROVIDE OTHER GROUNDING CONNECTIONS AS SPECIFIED IN NEC SECTION 250.50.
2. LABEL EACH GROUND CONDUCTOR TO INDICATE USE.
3. PROVIDE NON-FERROUS CONDUIT (SIZE AS NOTED) WHERE CONDUCTORS ARE SUBJECT TO PHYSICAL DAMAGE. IF FERROUS CONDUIT IS USED, BOND EACH END OF THE CONDUCTOR TO THE CONDUIT.

2 SYSTEM GROUNDING DETAIL -
GROUNDING ELECTRODE CONDUCTOR GROUND BAR
NO SCALE

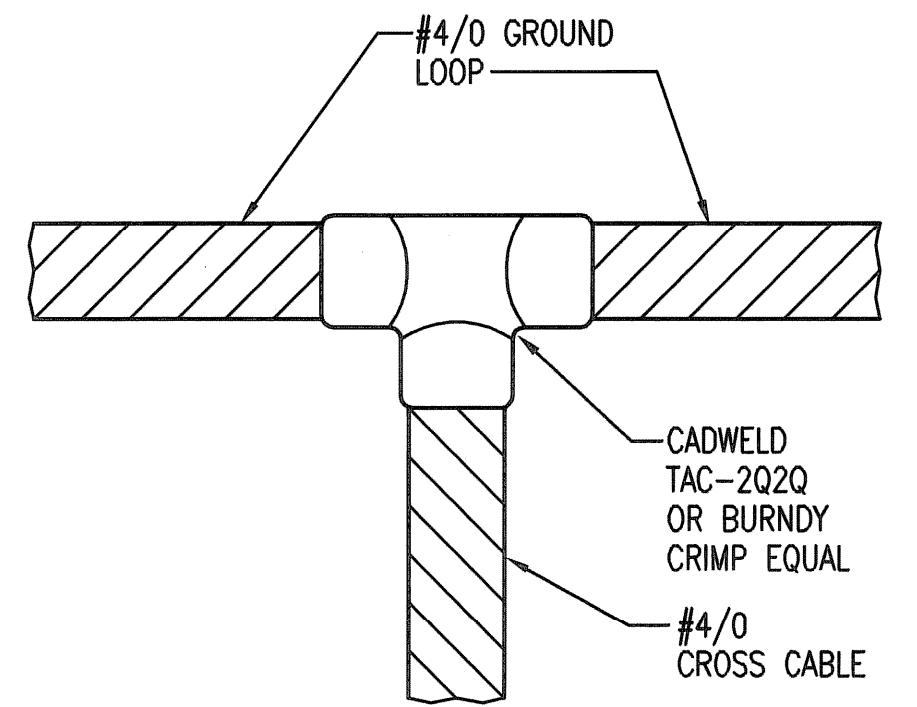


3 POLE BASE DETAIL
NO SCALE (30' MAX. POLE)

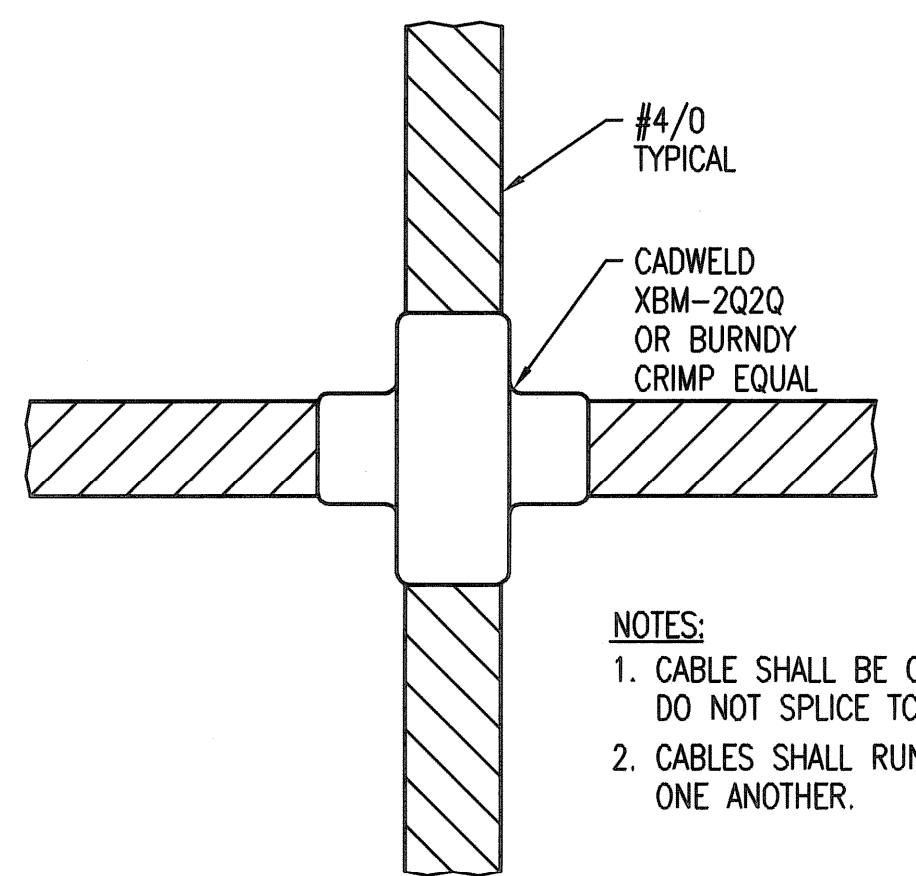
BROOKS PRODUCTS INC. 10-1/4"Ø TRAFFIC BOX, CAT. #3-RT BODY AND CAST IRON COVER TO BE FLUSH WITH FINISH GRADE. COVER SHALL BE MARKED 'GROUND ROD'.



5 GROUNDING SYSTEM TEST WELL
NO SCALE

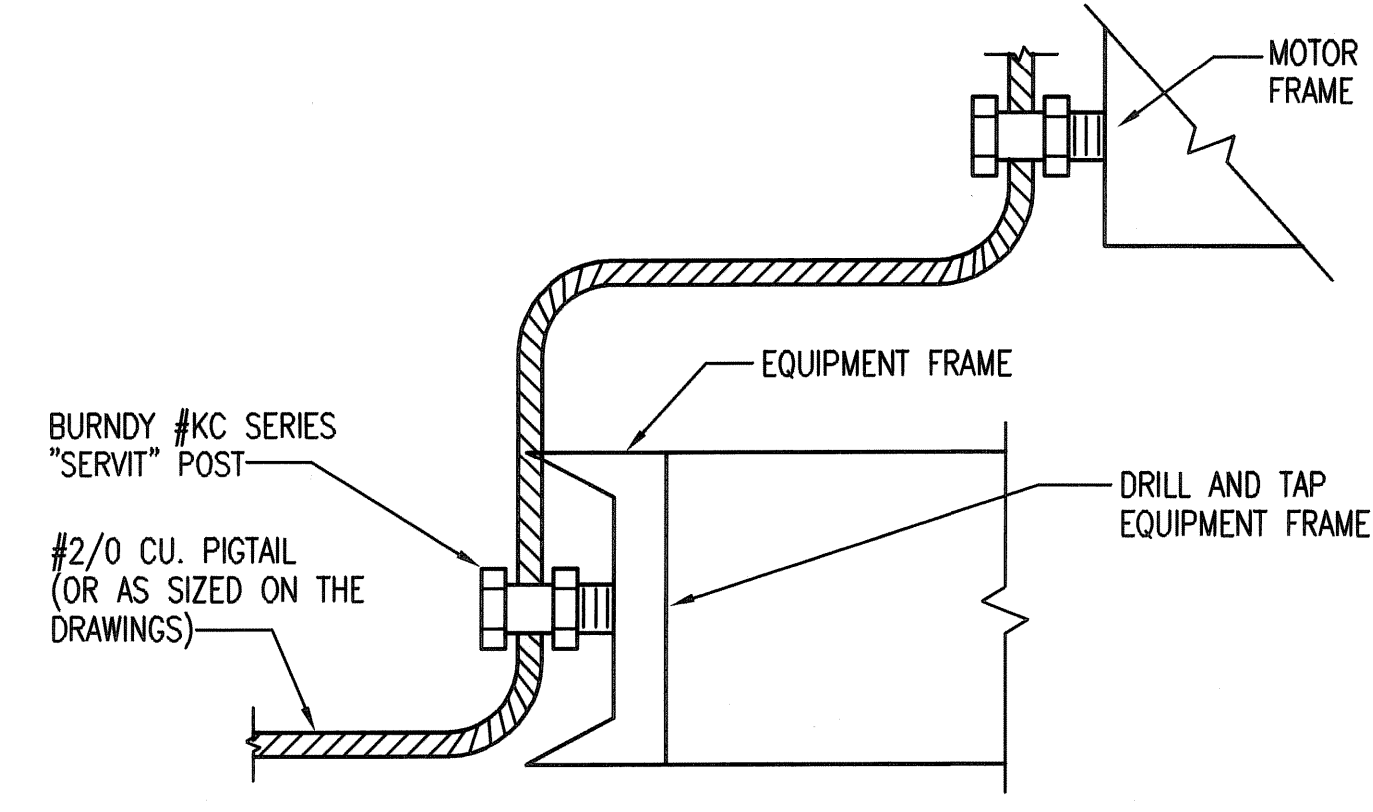


4 CABLE CONNECTION DETAIL
NO SCALE

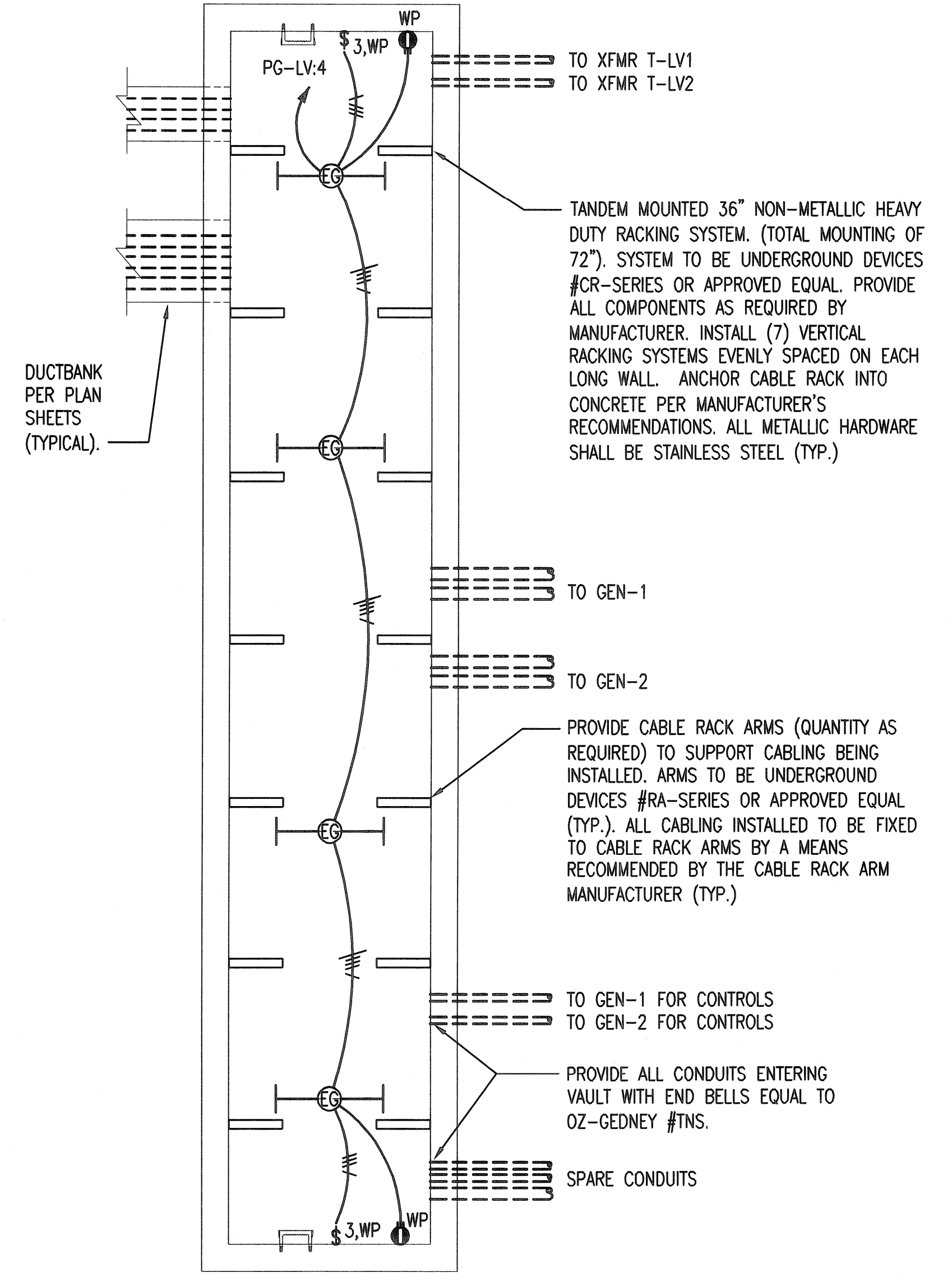


6 CABLE CONNECTION DETAIL
NO SCALE

- NOTES:
1. CABLE SHALL BE CONTINUOUS. DO NOT SPLICE TOGETHER.
 2. CABLES SHALL RUN ON TOP OF ONE ANOTHER.



7 EQUIPMENT BONDING DETAIL
NO SCALE



A VAULT ELECTRICAL PLAN
0' 4' 8' 12' 1/8"=1'-0"

S:\weld 02-23-2015 4:21:44 PM by CJV
 Plot Scale 1:1 02-24-2015 10:43:59 AM by CHRIS VAIL
 U:\Wichita-Facility\2014\14229\001\Elec\Drawings\E1.3 ELECTRICAL DETAILS

	Revision		By	Date
	CITY OF WICHITA, KANSAS ELECTRICAL DETAILS			
	WWTP #2 EMERGENCY POWER PROJECT C.O.W. PROJECT NO. 468-84956			
	PROFESSIONAL ENGINEERING CONSULTANTS, P.A. 303 SOUTH TOPEKA WICHITA, KS 67202 316-262-2691 www.pec1.com			
Designed by	RWW	Job No.	34-14229-001-0042	Sht. E1.3 of 36
Drawn by	CJV	Date	2/23/15	