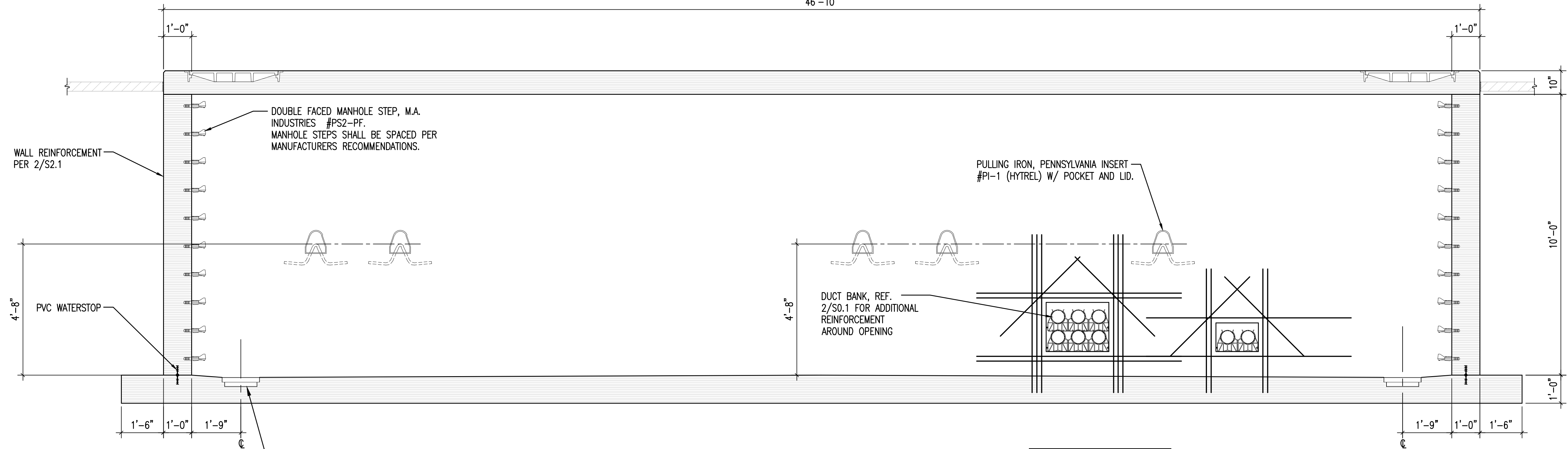
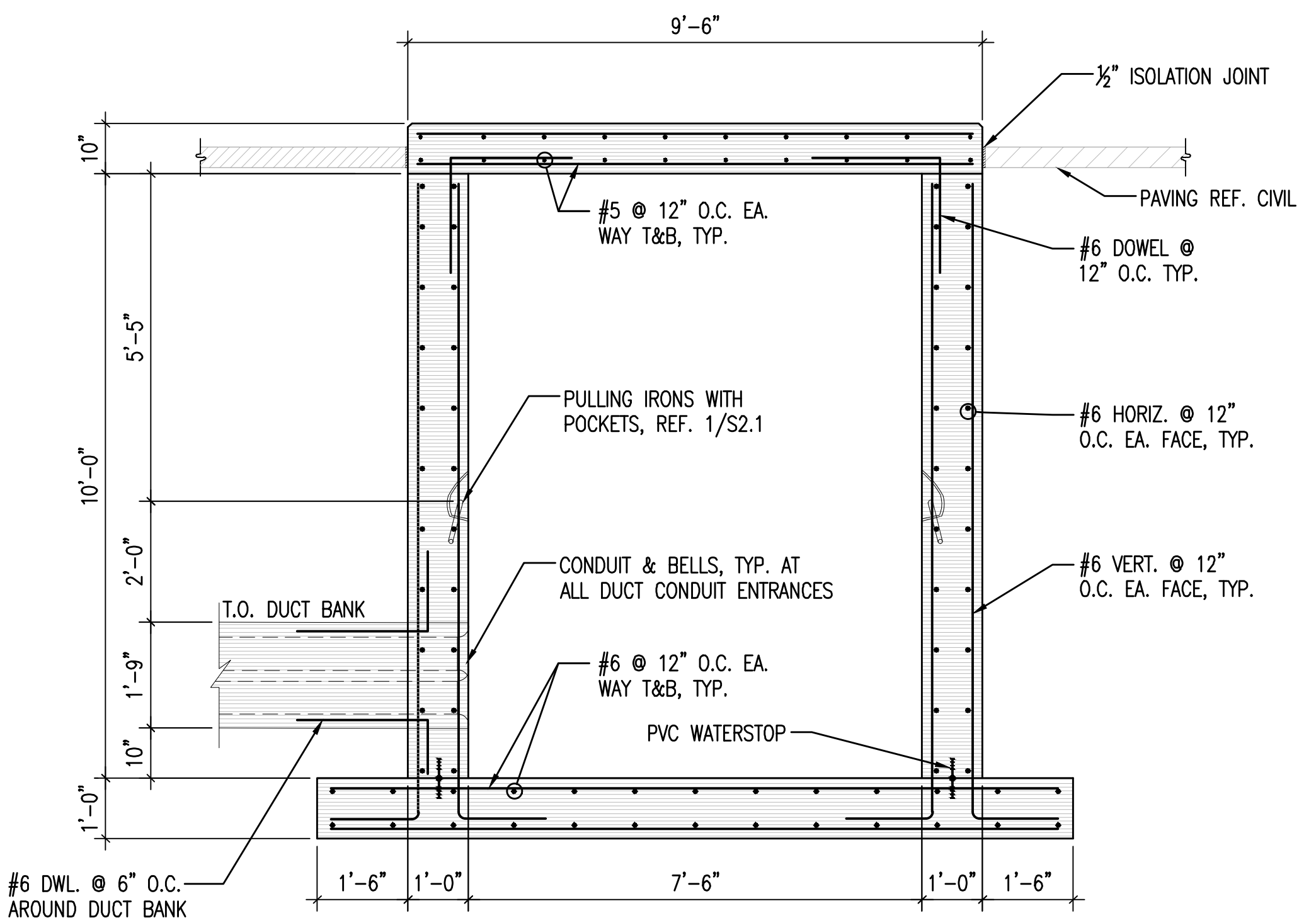


46'-10"

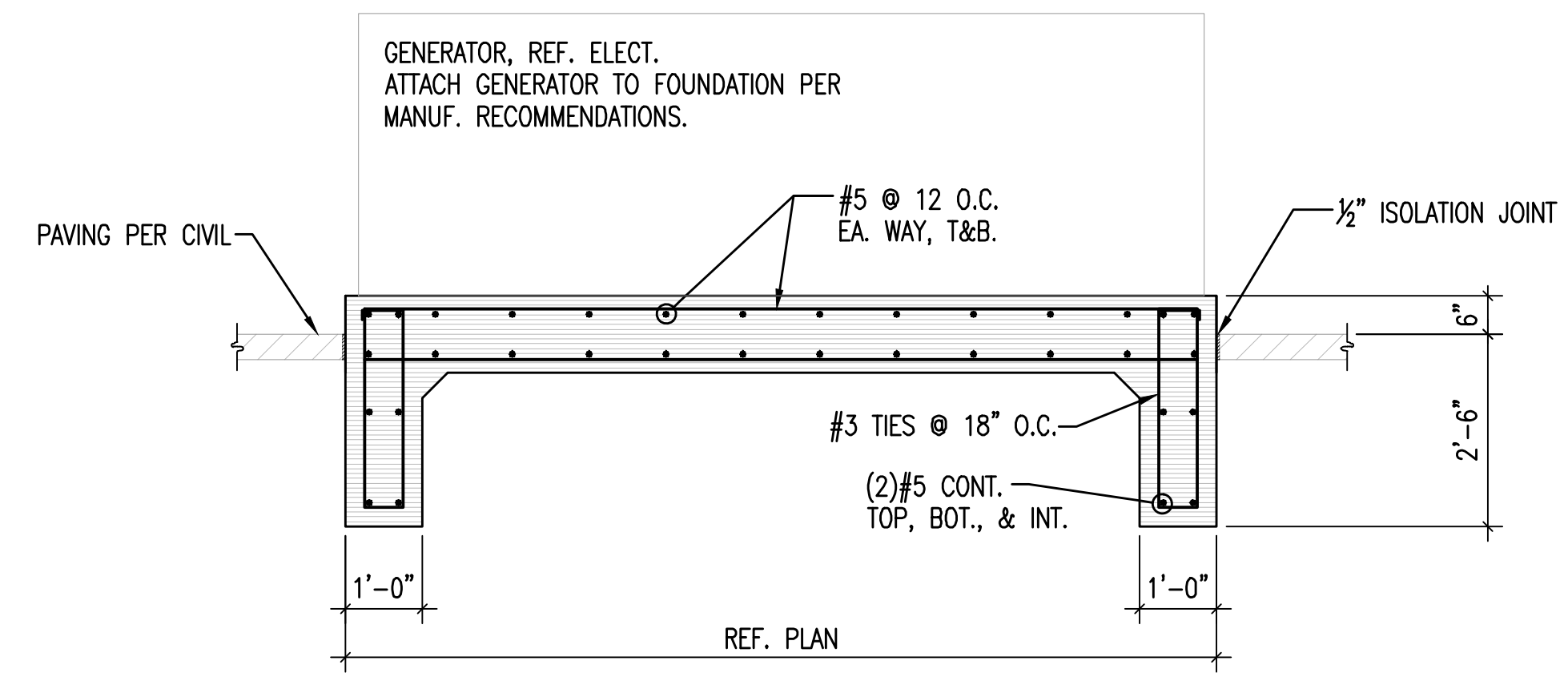


1 VAULT SECTION
S2.1 1/2"=1'-0"

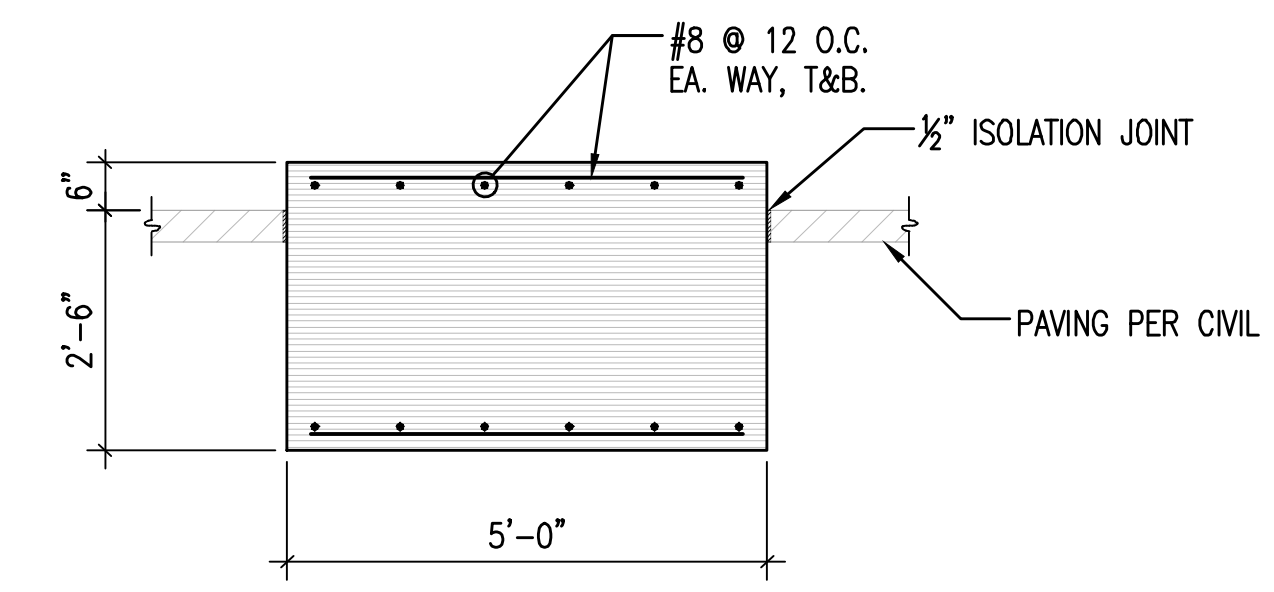
COORDINATE DUCT BANK, PULLING IRONS, AND ELECTRICAL PENETRATION LOCATIONS WITH ELECTRICAL CONTRACTOR.



2 VAULT SECTION
S2.1 1/2"=1'-0"

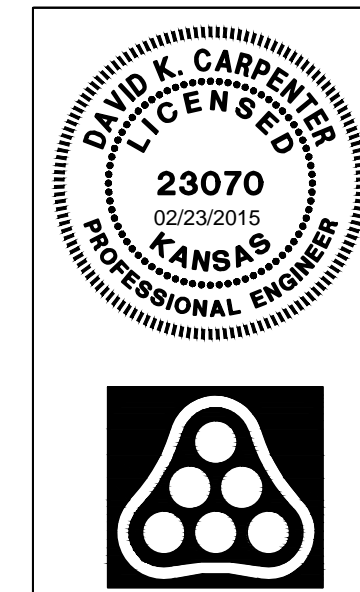


3 GENERATOR PAD SECTION
S2.1 1/2"=1'-0"



4 FUEL TANK FOUNDATION SECTION
S2.1 1/2"=1'-0"

Saved 02-23-2015 2:17:37 PM by DKC
 U:\Projects\2015\02\34\03\Struct\Drawings\CD\3\14229-001_S2.1
 U:\Projects\2015\02\34\03\Struct\Drawings\CD\3\14229-001_S2.1



No.	Revision	By	Date
CITY OF WICHITA, KANSAS			
STRUCTURAL SECTIONS			
WWTP #2 EMERGENCY POWER PROJECT C.O.W. PROJECT NO. 468-84956			
PEC PROFESSIONAL ENGINEERING CONSULTANTS, P.A. 303 SOUTH TOPEKA WICHITA, KS 67202 316-262-2691 www.pec1.com			
Designed by	DKC	Job No. 34-14229-001-0042	Sht. S2.1 of 36
Drawn by	JTR	Date February 2015	