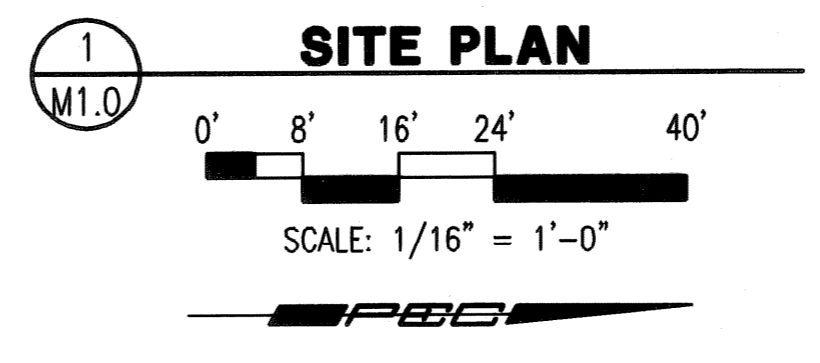
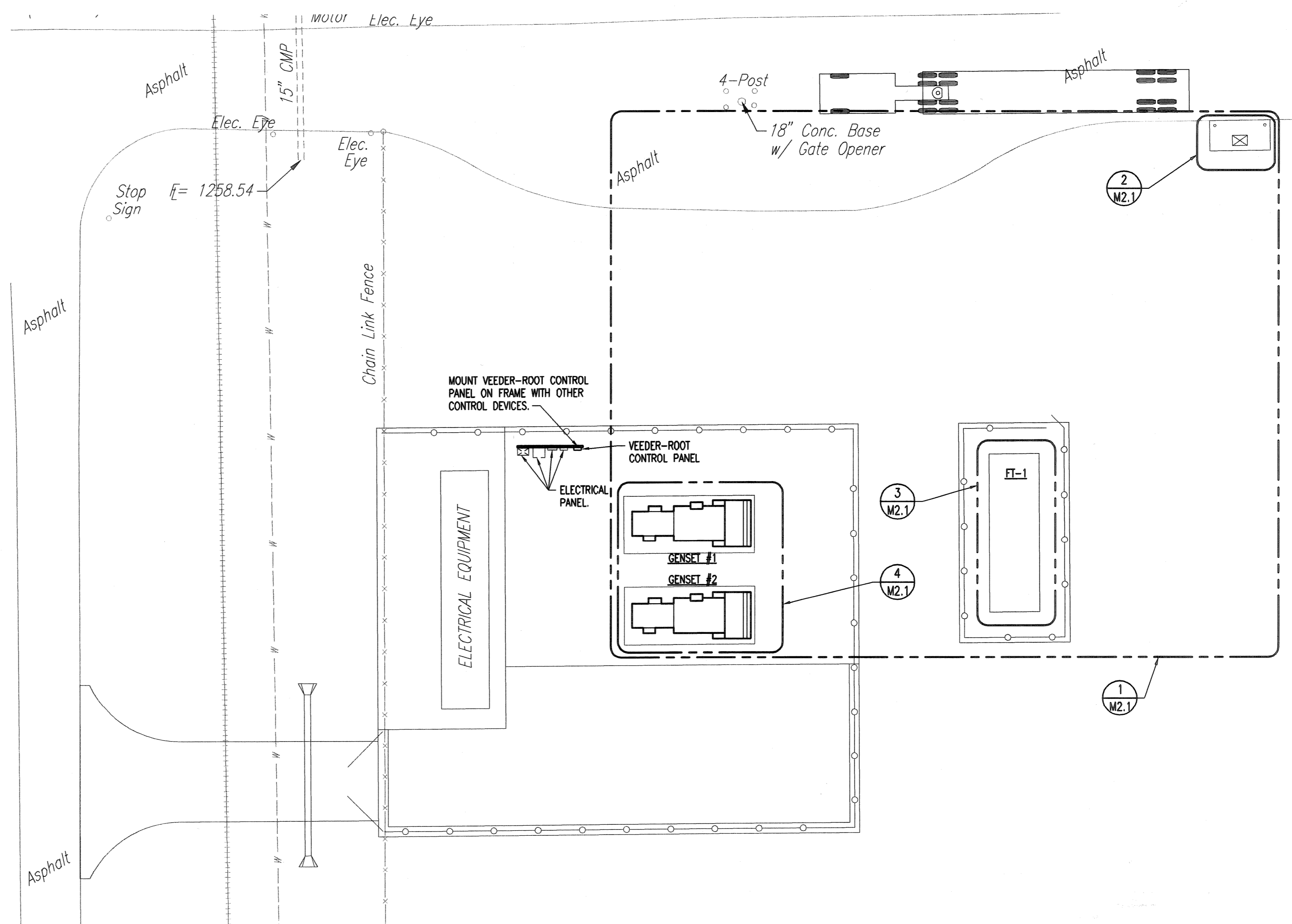


MECHANICAL SYMBOL SCHEDULE	
SYMBOL	DESCRIPTION
FOS	FUEL OIL SUPPLY
FOR	FUEL OIL RETURN
VTR	VENT THRU ROOF
CAP	CAP
PIPE RISE	PIPE RISE
PIPE DROP	PIPE DROP
UNION OR FLANGE CONNECTION	UNION OR FLANGE CONNECTION
DIRECTION OF FLOW	DIRECTION OF FLOW
ANCHOR	ANCHOR
CONCENTRIC REDUCER OR INCREASER	CONCENTRIC REDUCER OR INCREASER
ECCENTRIC REDUCER	ECCENTRIC REDUCER
TOP CONNECTION, 45° OR 90°	TOP CONNECTION, 45° OR 90°
BOTTOM CONNECTION, 45° OR 90°	BOTTOM CONNECTION, 45° OR 90°
SIDE CONNECTION	SIDE CONNECTION
CAPPED OUTLET	CAPPED OUTLET
GAS COCK	GAS COCK
VALVE IN DROP	VALVE IN DROP
VALVE IN RISER	VALVE IN RISER
BOS	BOTTOM OF STEEL
#	ELECTRIC WIRING (WITH 2 WIRES) - LOW VOLTAGE
120V	120V POWER WIRING
	CONTROL COMMUNICATION WIRING
M.C.	MECHANICAL CONTRACTOR
P.C.	PLUMBING CONTRACTOR
E.C.	ELECTRICAL CONTRACTOR
G.C.	GENERAL CONTRACTOR
ROOM	ROOM CALLOUT
REVISION	REVISION NUMBER
CONNECT	CONNECT NEW TO EXISTING. VERIFY EXACT LOCATION.
REFER	REFER TO PLAN NOTES

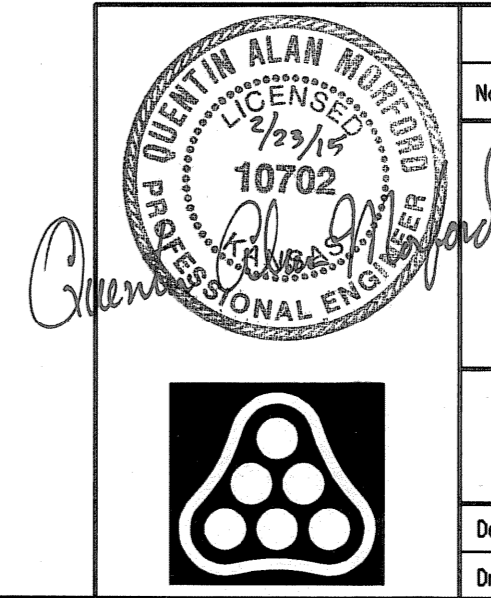
DRAWING SYMBOLS		
EQUIPMENT CALLOUT	SECTIONS	DETAILS
<p>EQUIPMENT TYPE (P=PUMP) UNIQUE I.D. (PUMP NO. 3) TYPICAL EQUIPMENT NUMBER</p>	<p>SECTION LETTER SHEET NUMBER WHERE DRAWN</p>	<p>DETAIL NUMBER SHEET NUMBER WHERE DRAWN</p>

- GENERAL NOTES**
- VERIFY JOB SITE CONDITIONS AND DIMENSIONS BEFORE BEGINNING WORK. PLANS ARE SCHEMATIC IN NATURE. LAYOUT IS BASED ON BEST AVAILABLE INFORMATION. CONTRACTOR SHALL FIELD VERIFY EXISTING CONDITIONS AND DIMENSIONS.
  - IT IS THE CONTRACTOR'S RESPONSIBILITY TO FIELD VERIFY EXACT LOCATION, CONFIGURATION AND ROUTING OF EXISTING SYSTEMS REQUIRED TO REMAIN IN OPERATION DURING THE PROJECT TO PREVENT DAMAGE DURING DEMOLITION AND PHASING.
  - COORDINATE ALL WORK WITH OTHER TRADES PRIOR TO INSTALLATION.
  - COORDINATE SIZE AND LOCATION OF MECHANICAL EQUIPMENT PADS WITH G.C.
  - ALL WORK IS TO CONFORM WITH APPLICABLE CODES AND STANDARDS.
  - ALL EQUIPMENT SUPPORT STANDS SHALL BE PRIMED AND PAINTED WITH EPOXY ENAMEL.
  - UNDERGROUND-TYPE UTILITY MARKER: PROVIDE A CAST ALUMINUM UTILITY MARKER AT EVERY 100 FEET FOR ALL UNDERGROUND UTILITIES. 4"x7" TOP WITH 10" MINIMUM SPIKE; LABEL WITH THE APPROPRIATE UTILITY. MARKERS AS MANUFACTURED BY LAKE SHORE MARKERS, ERIE, PENNSYLVANIA.
  - THESE DRAWINGS ARE ACCOMPANIED BY SPECIFICATIONS. REFER TO SPECIFICATIONS FOR FURTHER INFORMATION.



MECHANICAL SHEET INDEX	
M1.0	MECHANICAL COVER SHEET
M2.1	MECHANICAL ENGINE FUEL PLAN
M3.1	ENGINE FUEL DETAILS AND SCHEDULES

Saved 02-23-2015 2:48:35 PM by JEREMY LEE  
 Plot Scale 1:2 02-23-2015 2:48:17 PM by JEREMY LEE  
 U:\Wichita-Facility\2014\14229\001\Mech Drawings\14229-001\_M1.0\_MECHANICAL COVER SHEET



No.	Revision	By	Date
CITY OF WICHITA, KANSAS			
<b>MECHANICAL COVER SHEET</b>			
WWTP #2 EMERGENCY POWER PROJECT C.O.W. PROJECT NO. 468-84956			
<b>PEC</b> PROFESSIONAL ENGINEERING CONSULTANTS, P.A. 303 SOUTH TOPEKA WICHITA, KS 67202 316-262-2691 www.pec1.com			
Designed by	QAM	Job No. 34-14229-001-0042	Sht. M1.0 of 3
Drawn by	JML	Date 2/23/15	