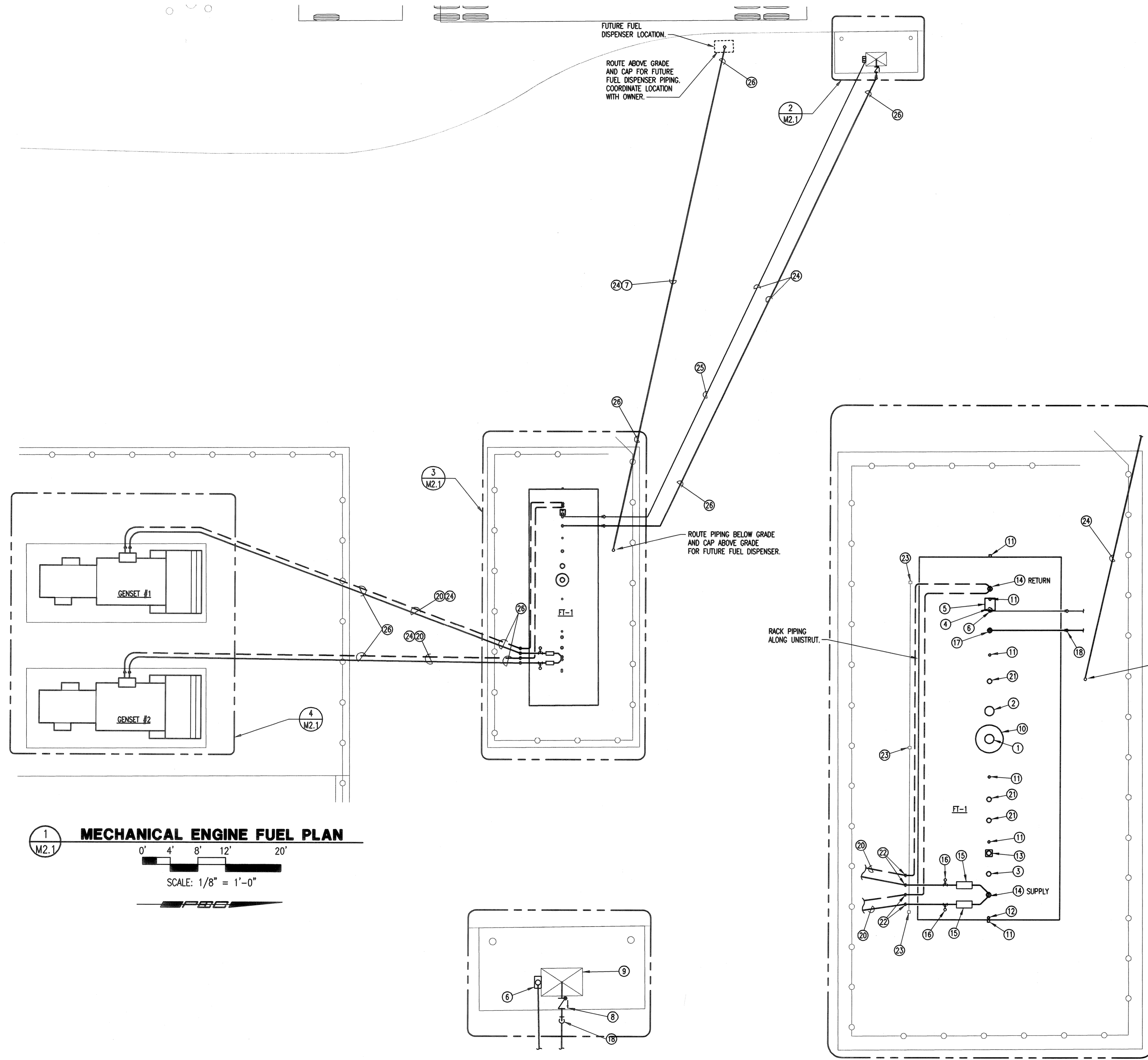
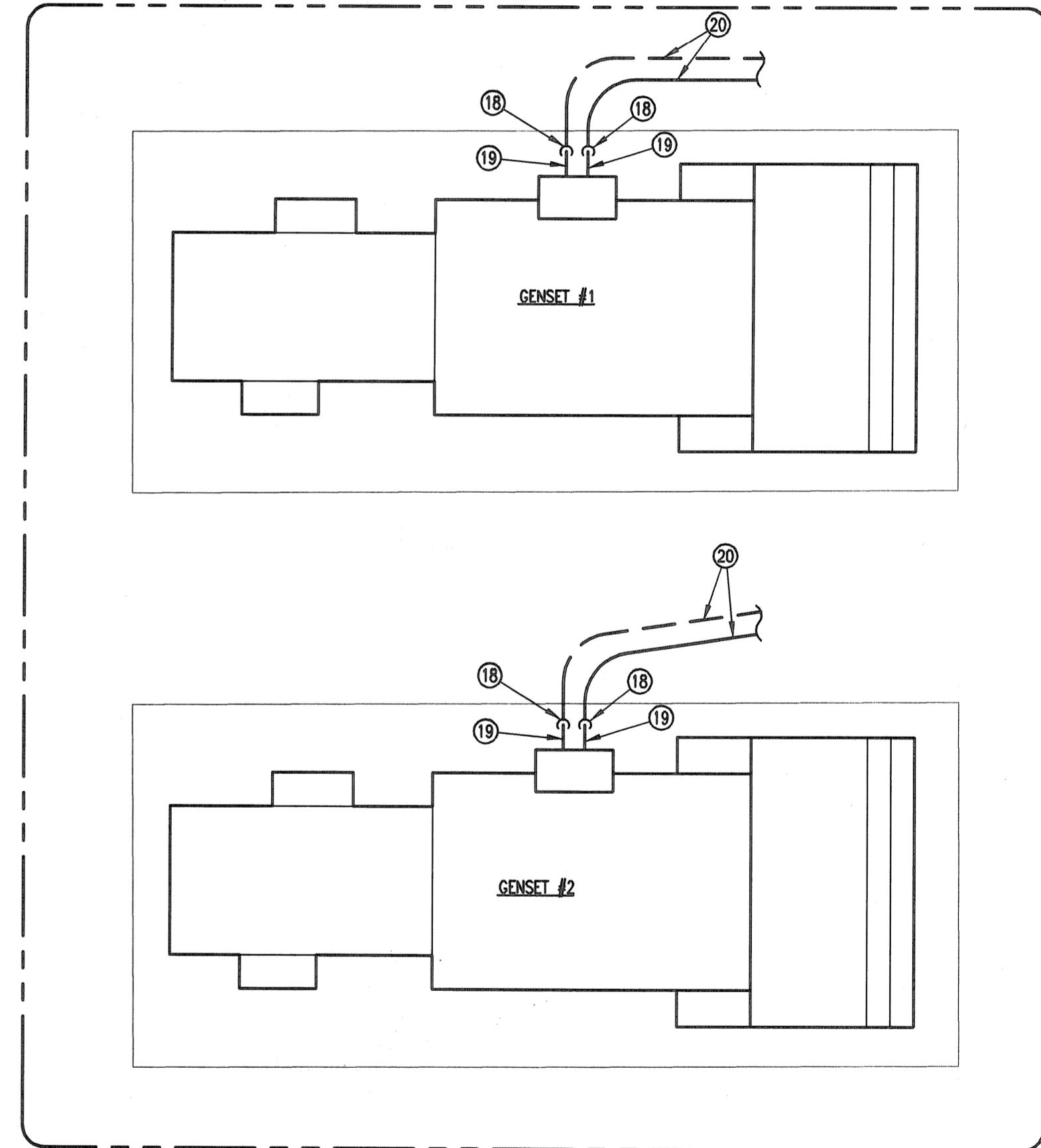


PLAN NOTES:

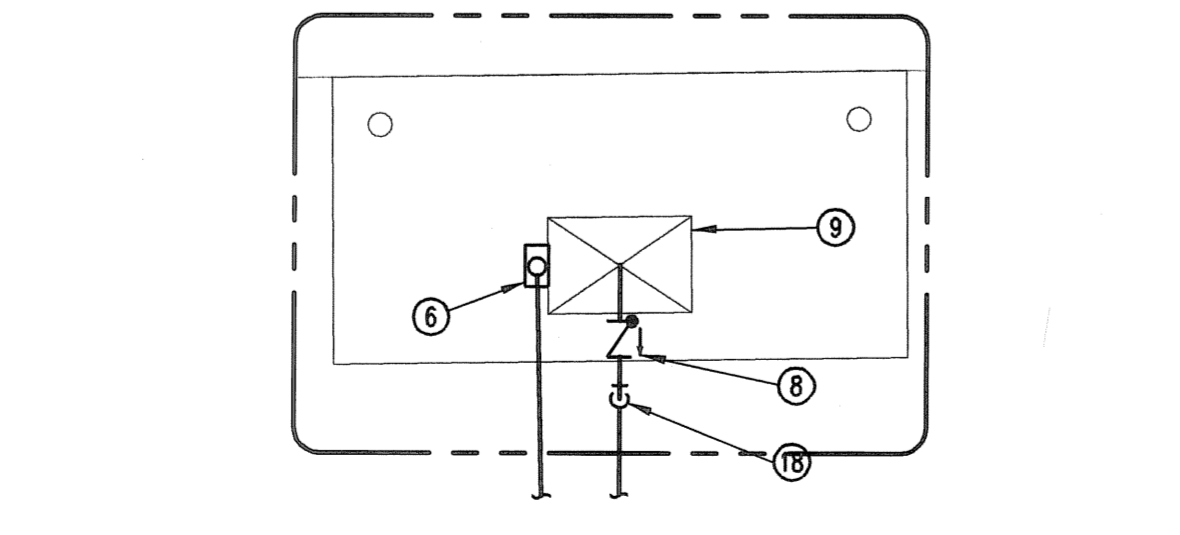
- ① PRIMARY EMERGENCY 8" VENT EQUIVALENT TO OPW 202-0680. MANUAL RESET AFTER ACTUATION.
- ② 8" INTERSTITIAL EMERGENCY VENT EQUIVALENT TO OPW 202-0680 THRU OUTER SHELL ONLY. MANUAL RESET OF CAP AFTER ACTUATION. MARK WITH SPECIAL WARNING LABEL "INTERSTITIAL EMERGENCY VENT ONLY".
- ③ PROVIDE BUSHING FOR 2" VENT PIPE IN 4" HOLE. 2" VENT PIPE UP WITH PRESSURE/VACUUM CAP. TERMINATE 12'-0" ABOVE GRADE.
- ④ PROVIDE 4" TANK BUNG GAUGE AND ALARM COMBO FITTING EQUIVALENT TO OPW 167A-0400.
- ⑤ PROVIDE MECHANICAL TANK GAUGE WITH 304 SS FLOAT, DROP TUBE, LARGE EASY READ FACE IN ENGLISH UNITS TO READ FEET AND INCHES. EQUIVALENT TO OPW 200TG-ENG-AST.
- ⑥ PROVIDE SINGLE CHANNEL LIQUID LEVEL TANK ALARM AT FUEL TANK. EQUIVALENT TO OPW 144TA-0100.
- ⑦ 1" SUPPLY IN CONTAINMENT PIPING FOR FUTURE FUEL DISPENSER.
- ⑧ INSTALL A 2" OPW SWING CHECK VALVE AND AN OPW SERIES 1611AN KAMVALOK WITH DUST CAP AND A POPPETED 1711D KAMVALOK DRY BREAK COUPLER. MOUNT 36" ABOVE GRADE.
- ⑨ PROVIDE STAINLESS STEEL 3/4"x 24"x 24"H REMOTE FILL ABOVE GROUND STORAGE TANK SPILL CONTAINER WITH BOTTOM AT 24" TO 30" ABOVE GRADE. EQUIVALENT TO OPW 211-RMOT.
- ⑩ 24" TIGHT BOLT MANWAY WITH 8" PRIMARY VENT MOUNTED IN COVER.
- ⑪ 2" CAST IRON PLUG BY MANUFACTURER.
- ⑫ INSTALL LEAK DETECTION SENSOR PROVIDED AS PART OF THE VEEDER-ROOT TLS-300C FUEL MANAGEMENT SYSTEM IN THE LEAK DETECTION PORT.
- ⑬ INSTALL FUEL LEVEL SENSOR PROVIDED AS PART OF THE VEEDER-ROOT TLS-300C FUEL MANAGEMENT SYSTEM.
- ⑭ PROVIDE 4" TANK BUNG COMBO FITTING FOR 1" PIPING CONNECTIONS AND DROP TUBES FOR EACH CONNECTION DOWN TO 1" ABOVE FLOOR OF TANK.
- ⑮ ANTI-SYPHON VALVE.
- ⑯ PLUGGED 90° ELL TURNED UP FOR PIPE VENTING AND PRIMING FILL.
- ⑰ INSTALL A 2" OPW MODEL 6150 OVERFILL PREVENTION VALVE IN TANK FILL CONNECTION.
- ⑱ TRANSITION TO FUEL OIL CONTAINMENT PIPING AT 12" ABOVE GRADE, WHERE PIPING CONTINUES BELOW GRADE. REFER TO SHEET M3.1 FOR ADDITIONAL INFORMATION.
- ⑲ FUEL HOSE WITH STAINLESS STEEL BRAID EXTERIOR. MIN. 24" LENGTH RATED FOR SERVICE INTENDED.
- ⑳ 1" SUPPLY AND 1" RETURN COAXIAL PIPING BELOW GRADE IN SAME FUEL OIL CONTAINMENT PIPING.
- ㉑ COORDINATE ADDITIONAL 4" CONNECTION PORT IN TOP OF TANK WITH TANK MANUFACTURER FOR FUTURE PUMPING CONNECTION. PLUG CONNECTION PORT FOR FUTURE USE.
- ㉒ 1" SUPPLY PIPING WITH 1" OPW 821-0100AC SOLENOID VALVE AND 1-1/2" OPW 346DI-0400AV EXTERNAL AST EMERGENCY SHUT-OFF VALVE. 1" RETURN PIPING WITH 1-1/2" 246ADI-0200AV SWING CHECK VALVE. TRANSITION TO 1" FUEL OIL CONTAINMENT PIPING AT 12" ABOVE GRADE. REFER TO SHEET M3.1 FOR ADDITIONAL INFORMATION.
- ㉓ UNISTRUT PIPE SUPPORT. REFER TO DETAIL 4/M3.1.
- ㉔ BURY 12GA COPPER TRACER WIRE AND SAFETY TAPE OVER THE TOP OF BURIED FUEL PIPING.
- ㉕ CONDUIT- REF ELECTRICAL.
- ㉖ INSTALL MARKER (REF E1.1/4) INDICATING BURIED FUEL PIPING.



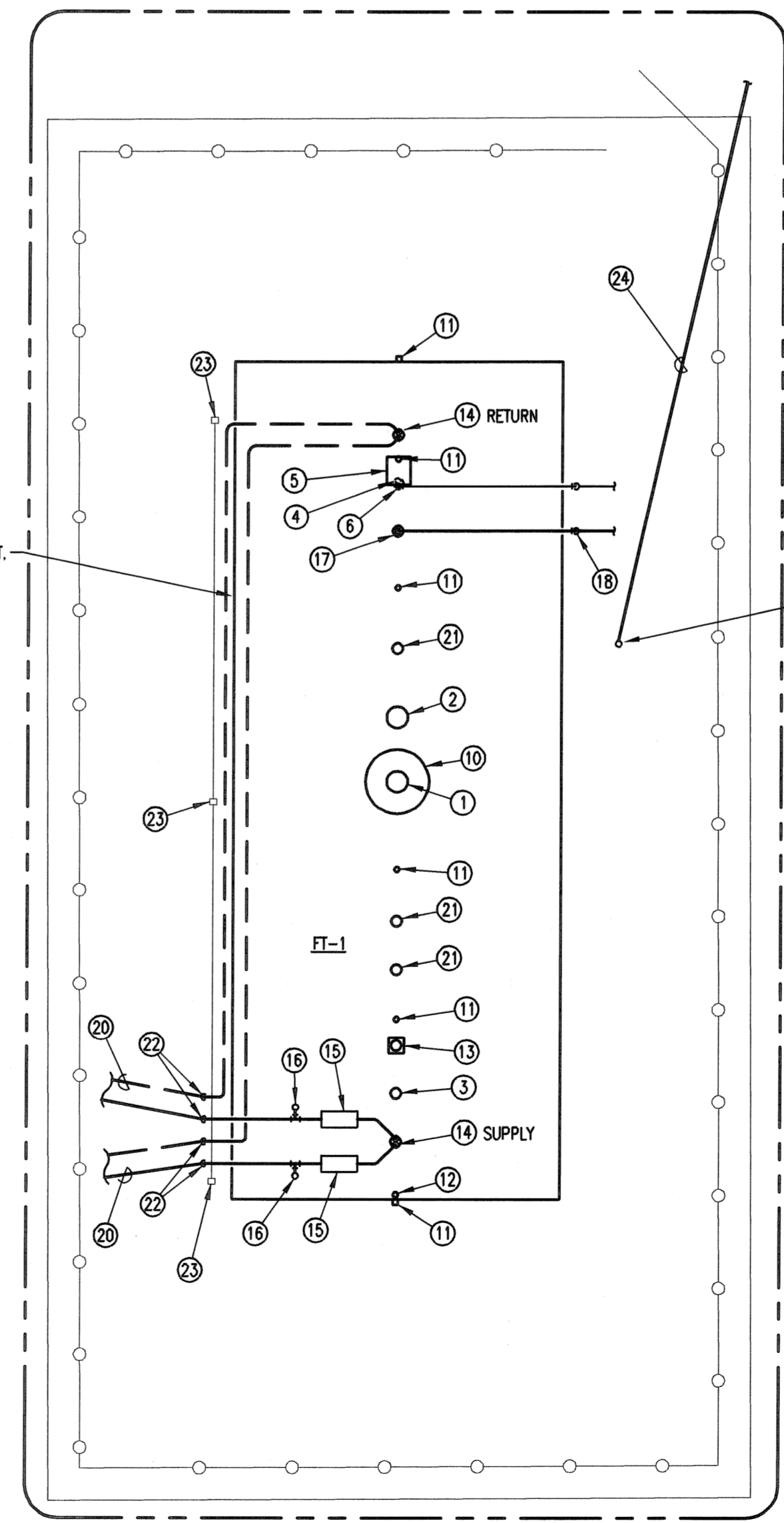
1 M2.1 MECHANICAL ENGINE FUEL PLAN
 0' 4' 8' 12' 20'
 SCALE: 1/8" = 1'-0"
 PEB



4 M2.1 ENLARGED GENERATOR PLAN
 0' 2' 4' 6' 10'
 SCALE: 1/4" = 1'-0"
 PEB



2 M2.1 ENLARGED FILL CONNECTION PLAN
 0' 2' 4' 6' 10'
 SCALE: 1/4" = 1'-0"
 PEB



3 M2.1 ENLARGED FUEL TANK PLAN
 0' 2' 4' 6' 10'
 SCALE: 1/4" = 1'-0"
 PEB

Sheet 02-23-2015 2:45:51 PM by JEREMY LEE
 Plot Scale 1:1 02-23-2015 2:48:19 PM by JEREMY LEE
 U:\Wichita-Fuel\2014\14229\001\Mech Drawings\14229-001_M2.1_MECHANICAL ENGINE FUEL PLAN

	#	NOTE	BY	DATE
	No.	Revision	By	Date
CITY OF WICHITA, KANSAS MECHANICAL ENGINE FUEL PLAN WWTP #2 EMERGENCY POWER PROJECT C.O.W. PROJECT NO. 468-84956				
		PROFESSIONAL ENGINEERING CONSULTANTS, P.A. 303 SOUTH TOPEKA WICHITA, KS 67202 316-262-2691 www.pec1.com		
		Designed by QAM Drawn by JML	Job No. 34-14229-001-0042 Date 2/23/15	Sht. M2.1 of 3