

GENERAL NOTES:

1. Contractor will be required to provide notice to utility companies a minimum of twenty-four (24) hours prior to any excavation, as follows:

Kansas One-Call (316)687-2470

The Contractor must notify the following in case of an emergency:

Cox Communications (316)262-4270 or (316)263-2061

Westar Energy/
Kansas Gas & Electric Company (800)482-4950
AT&T 1-555-1212
City of Wichita Water Department (316)268-4908
City of Wichita Sewer Department (316)268-4071
Aquila Natural Gas (316)941-1608 or (800)303-0357

2. Exist. utilities and their locations, as shown on the plans, represent the best information attainable for design. Location information has been obtained from the various utility companies and is either from company record drawings or company-provided field locations. The Contractor will be required to work around existing utilities which do not conflict with proposed constructions.

3. The Contractor to verify utility locations prior to construction of this project.

4. Utility service and installation shall be coordinated with the respective utility owner. Contacts are:

Kansas Gas Service Tim Hamlin (316)832-3121
Westar Energy Shane Price (316)261-6315
Black Hills Energy Daryl Keller (316)941-1654
Wichita Water & Sewer Greg Lolley (316)268-4334
AT&T Jason Edwards (316)268-2008
Cox Communications Mark Henderson (316)260-7745

5. All lawn/turf areas disturbed by construction of proposed improvements shall be restored with the same grass as existing. Restoration of disturbed areas shall include, but not limited to, soil preparation, fertilizing, seeding, mulching (all seeded areas, outside the limits of erosion mat placement), and/or reseeding, and installation of erosion control mat. All seeding work shall be in accordance with the City of Wichita Standard Specifications and the City of Wichita Administrative Regulations No. AR 6.5 which governs cleanup and respiration or replacement following construction. All cost for the soil preparation, seeding and mulching (all seeded areas, outside the limits of erosion mat placement) shall be paid for through the lump sum bid item for "Seeding." All seeded areas within eight feet of the back of new curb shall be covered with an approved erosion mat, which shall be paid for by the measured quantity bed item "Back of Curb Protection (8' wide)."

6. Traffic affected by the construction of this project shall be handled in accordance with the latest edition of the Manual on Uniform Traffic Control Devices.

7. It is the contractor's responsibility to visit this site to better understand the extent of site clearing and restoration to be performed. Site Clearing and Restoration shall include all costs for removal of items which a pay item is not provided.

8. The contractor shall be responsible for preserving property irons. The contractor will be required to re-establish any property irons which are damaged or destroyed by the construction operations. Such irons shall be re-established by a licensed land surveyor in accordance with state laws.

9. Properties within the project limits may have underground sprinkler systems in public right-of-way which conflict with new construction. Contractor will be required to remove such improvements should they not be removed by their owner at the time of construction of the project. The contractor will be required to salvage all sprinkler heads and/or valves and give such material to owner. Portions of underground sprinkler systems not in conflict with new construction shall be protected from damage and shall remain in place. All work in connection with underground sprinkler systems shall be considered as subsidiary to the contract pay items for work.

10. Cuts made in paved surfaces on public property will be repaired by the City's Contractor and charged against the contractor. Unit Repair prices are available from the city at 268-4418. A surcharge may be applicable. Call 268-4418 for details. Repair costs to be paid prior to release of utility service if utilities are effected.

DRAINAGE TO SERVE ZOO PARK STORAGE CONDOS

2353 N. Zoo Park Circle

0280 PPD (607861)

CITY OF WICHITA, KANSAS

Gary Janzen, P.E., City Engineer

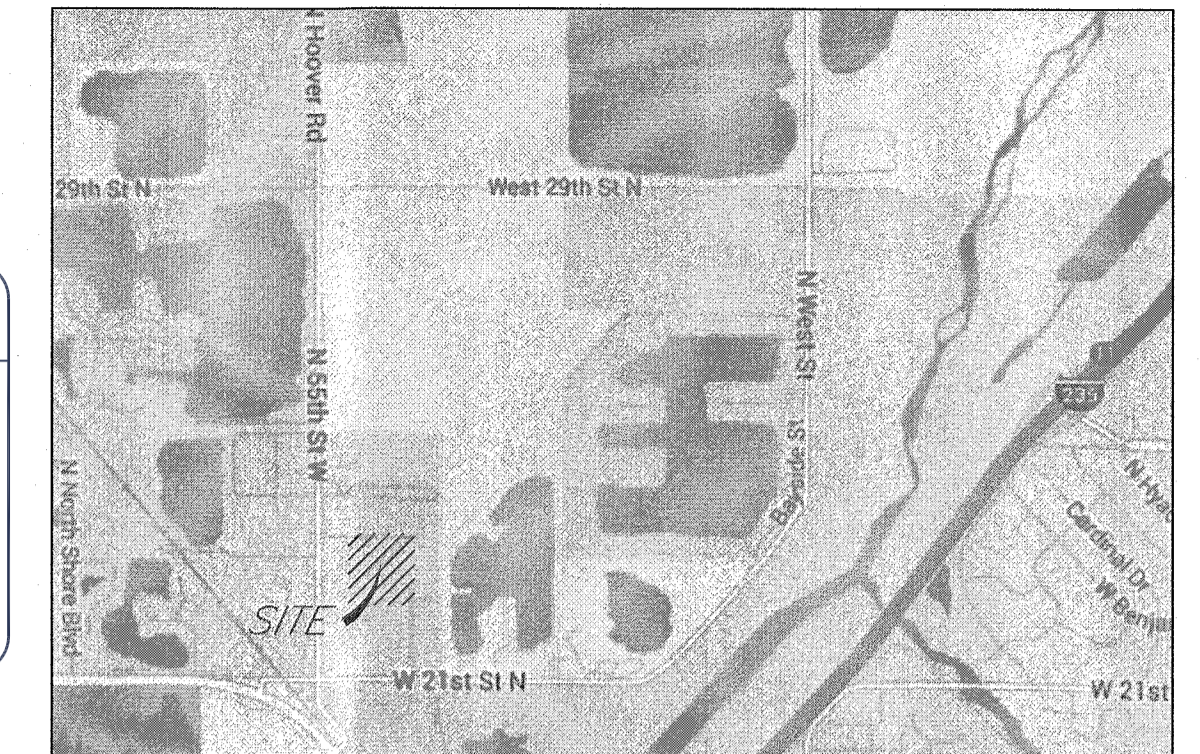
AS BUILTS

Contractor:
Evans Building
Co.

Project Inspector:
Larry Gann

3/16/2015

KEMILLER
ENGINEERING PA
117 E. Lewis, Wichita, KS 67202 (316)264-0242



LOCATION MAP
(For Visual Use Only)

Index of Sheets:

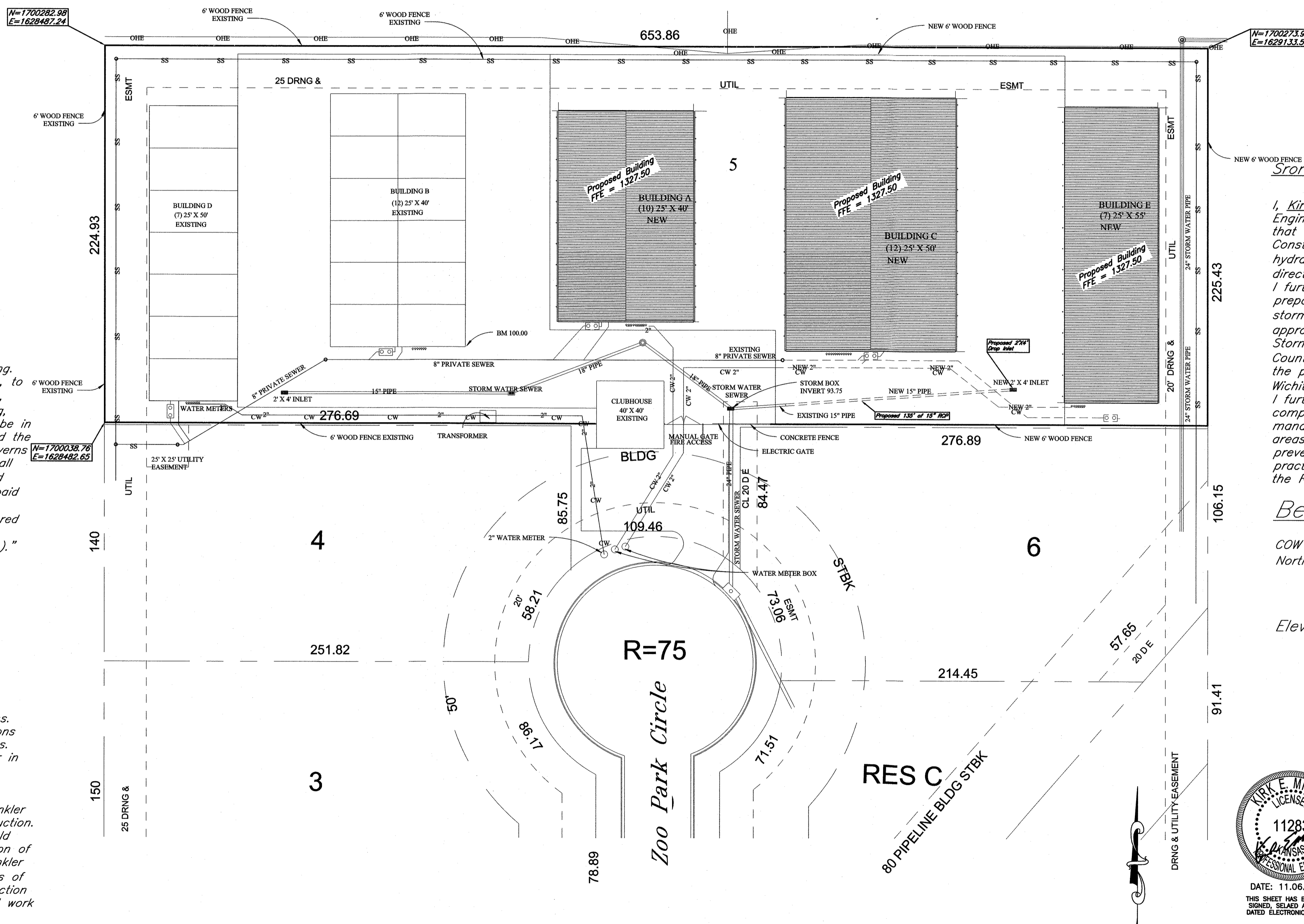
- 1.0 Cover Sheet
- 2.0 Plan and Profile
- 2.1 Drop Inlet Detail
- 3.0 Erosion Control Plan
- 3.1 Erosion Control Detail
- 3.2 Erosion Control Detail
- 4.0 Plat

Stormwater Design Certification Statement

I, Kirk Miller of K.E. Miller Engineering, a Professional Engineer registered in the State of Kansas, hereby certify that this Stormwater Permit Application, the associated Construction Plan and all associated hydrologic and hydraulic analyses for was prepared by me (or under my direct supervision). I further certify that the plans and analyses were prepared in accordance with the provisions of the stormwater management regulation (Regulation) of the appropriate governing locality (i.e., the City of Wichita Stormwater Management Ordinance 16.32 or the Sedgwick County Stormwater Management Resolution 196-10), and the policies and guidelines presented in the Wichita/Sedgwick County Stormwater Manual (Manual). I further certify that all stormwater management components of the Development, including stormwater management facilities, water quality volume reduction areas, stormwater system components and erosion prevention and sediment control best management practices are designed to comply with the provisions of the Regulation and the Manual.

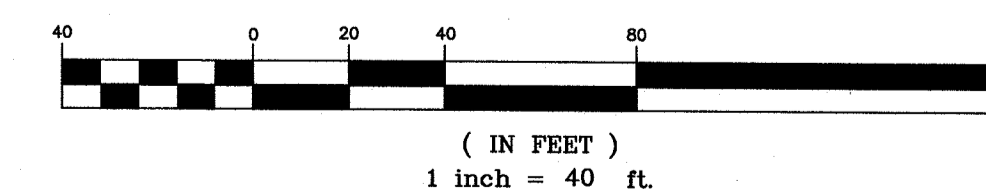
Benchmark:

COW Benchmark: Intersection of Hoover and 21st Street North
48.5' W of centerline
28.0' N of centerline
16' W of PP
53.2' NW of section corner iron
Elev. = 1326.32 (NAVD88)



Disturbed Area = 77,782.30 sq.ft
Impervious Area = 77,782.30 sq.ft.

21st Street North
October 2014



APPROVED AS NOTED

Storm Water Utility Office: *[Signature]* *[Signature]*

City Engineers Office: *[Signature]* 11/14

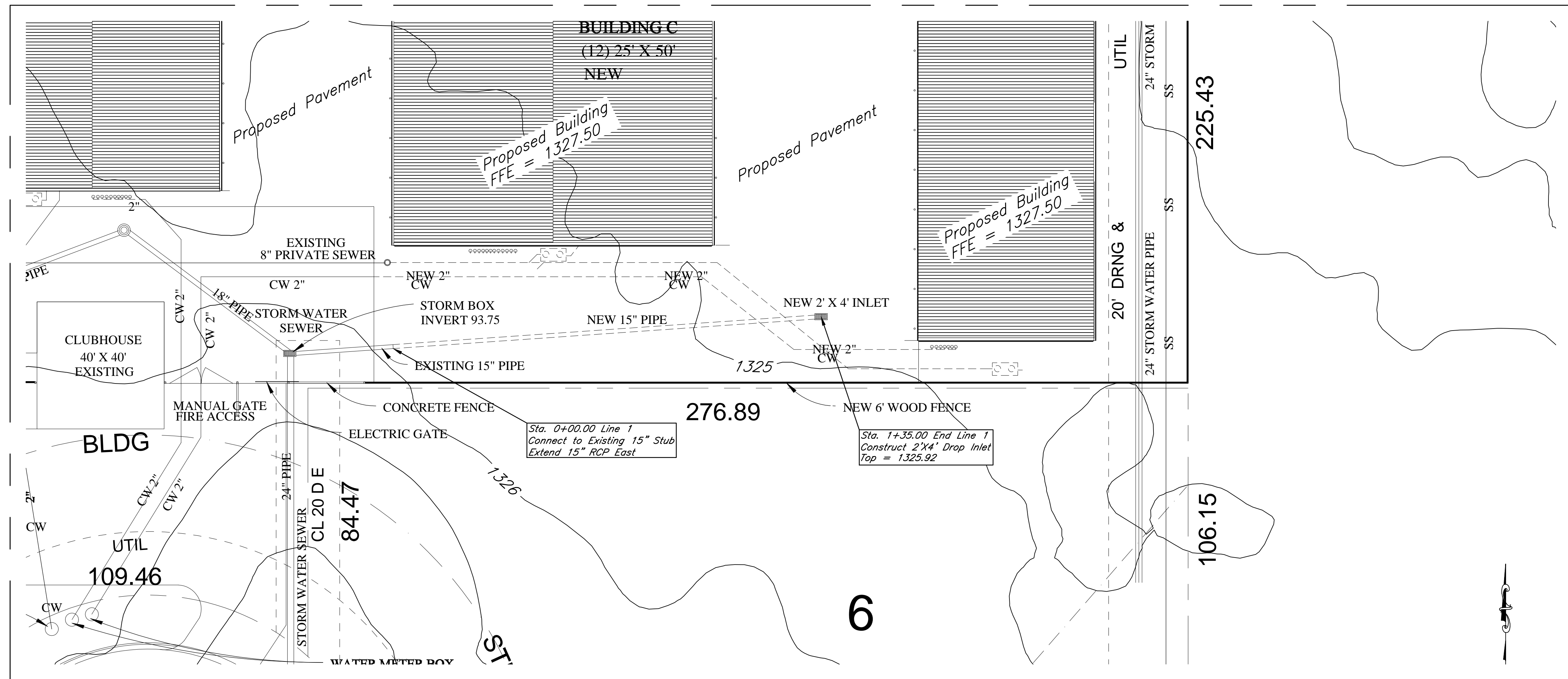
NOTE TO CONTRACTORS

Installation, inspection and testing for this project is to be provided by a Licensed Consulting Engineering Firm under contract with the Owner/Developer. Said inspection to be in accordance with the City of Wichita standard construction engineering practices and certified by a Licensed Professional Engineer. No work shall be performed in dedicated easements or public right-of-way by the Contractor without such inspection nor shall any work be commenced without written authorization by the City Engineer. All Construction and Materials shall comply with the City of Wichita Specifications and Standards (on file and available in the City Engineer's Office).

DATE: 11.06.2014
THIS SHEET HAS BEEN SIGNED, SEALED AND DATED ELECTRONICALLY

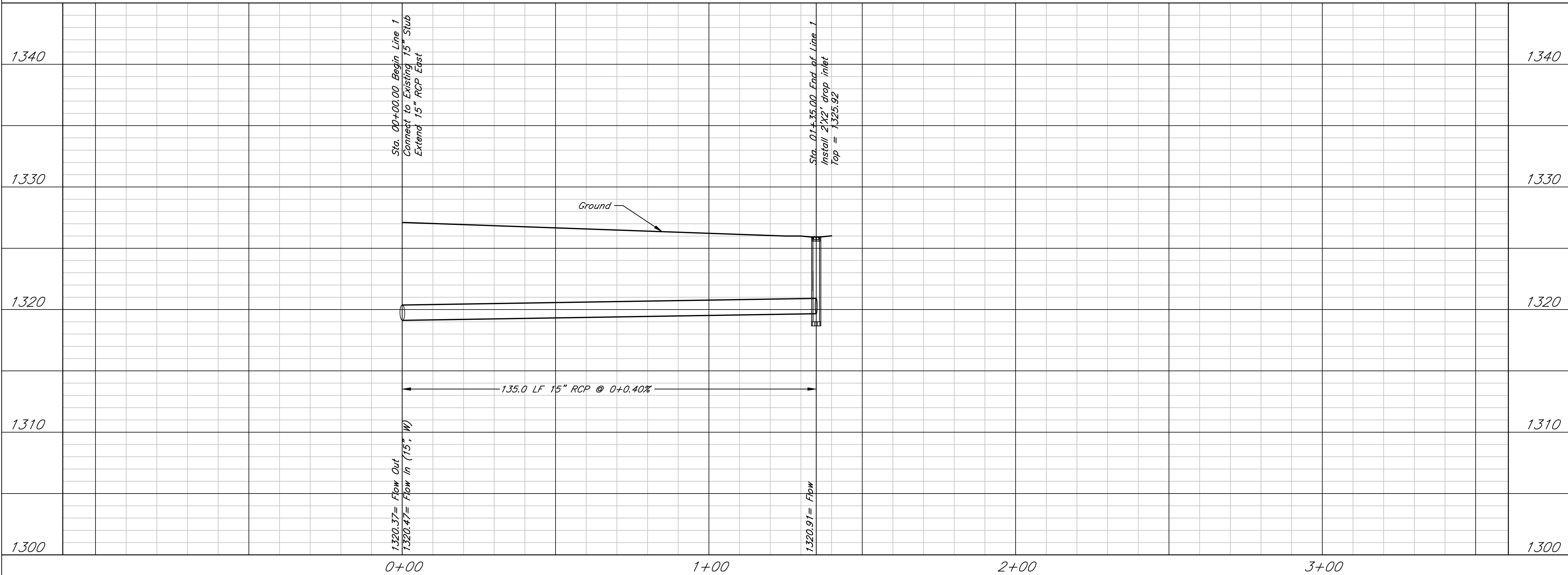


KEMILLER
ENGINEERING PA
117 E. Lewis, Wichita, KS 67202 (316)264-0242

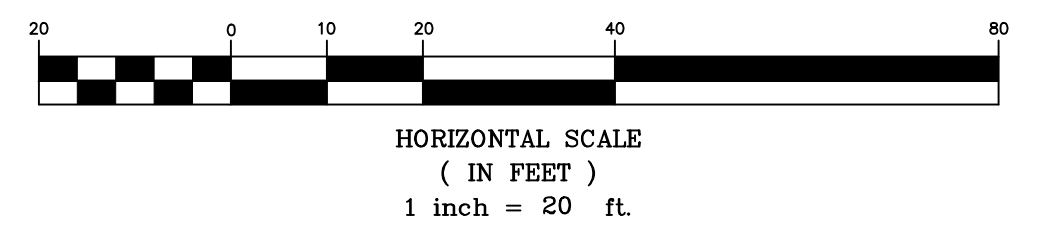
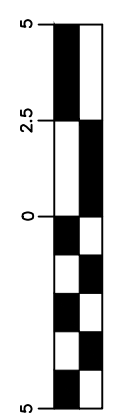


AS BUILTS

KEMILLER
ENGINEERING PA
117 E. Lewis,
Wichita, KS 67202 (316)264-0242



DATE: 11.06.2014
THIS SHEET HAS BEEN
SIGNED, SEALED AND
DATED ELECTRONICALLY



**Zoo Park Storage Condos
Plan and Profile
Wichita, Kansas**

	PROJECT NUMBER			
	KEM NO. 14181	FILE	DATE 10/2014	SHEET 2.0
DESIGN KM	DRAWN DM	REVISED		