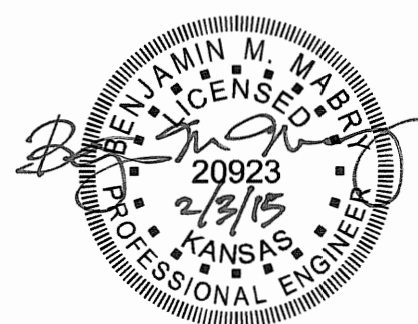


LANDSCAPE ARCHITECT
CONFLUENCE
 417 DELAWARE STREET
 KANSAS CITY, MISSOURI 64105
 PH: 816.531.7227
 CONTACT: MATT EVETT
 CIVIL ENGINEER
PEC
 303 S. TOPEKA STREET
 WICHITA, KANSAS 67202
 PH: 316.262.2891
 CONTACT: MATT BILLINGSLEA
 ELECTRICAL ENGINEER
LIGHTWORKS, INC.
 3618 MAIN STREET
 WESTON, MISSOURI 64098
 PH: 816.659.9846 FAX: 816.640.9970
 CONTACT: KATHI VANDEL
 LIGHTING DESIGNER
DEREK PORTER STUDIO
 1907 WYANDOTTE
 KANSAS CITY, MISSOURI 64108
 PH: 816.668.8080
 CONTACT: DEREK PORTER
 ART CONSULTANT
VS SITEWORKS
 16218 39TH AVENUE NE
 LAKE FOREST PARK, WASHINGTON 98155
 PH: 206.361.1084
 CONTACT: VICKI SCURI



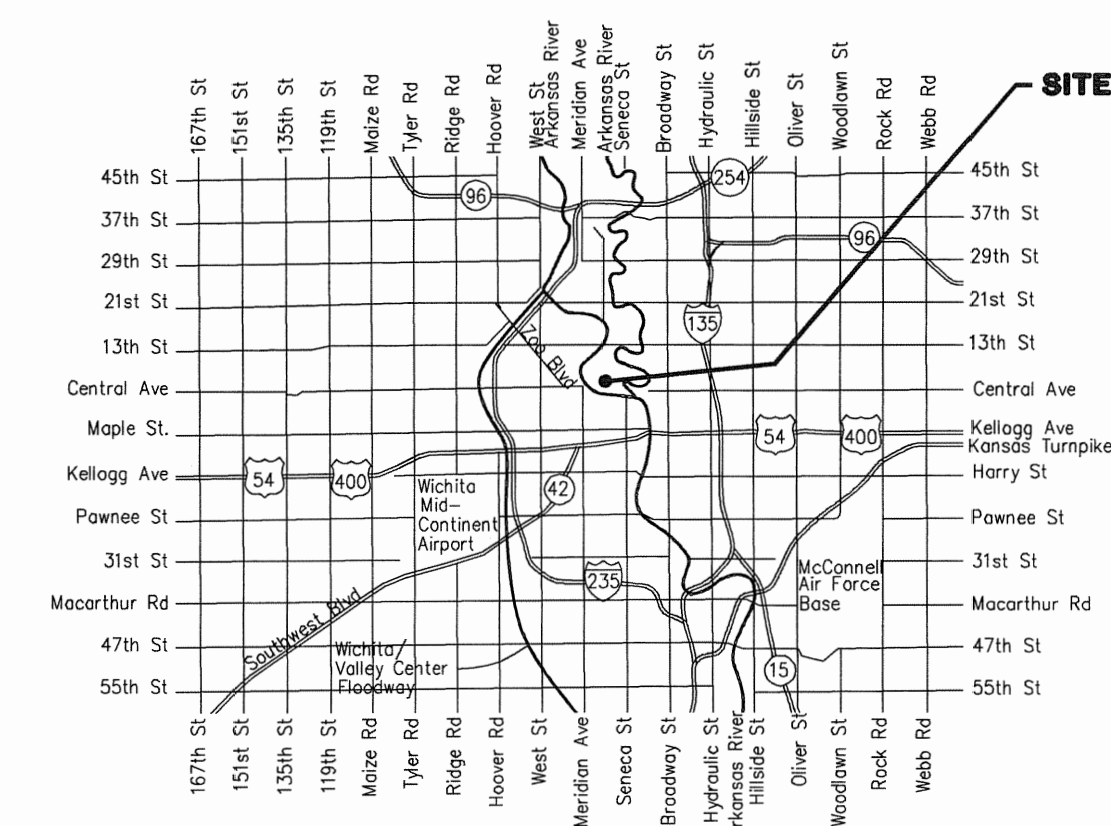
GENERAL NOTES

- THE CONTRACTOR SHALL COMPLY WITH ALL APPLICABLE SAFETY REGULATIONS. ALL CONSTRUCTION SHALL BE COMPLETED FOLLOWING CURRENT CITY STANDARD SPECIFICATIONS AND SPECIAL PROVISIONS.
- CONTRACTOR WILL BE REQUIRED TO PROVIDE NOTICE TO UTILITY COMPANIES A MINIMUM OF SEVENTY-TWO (72) HOURS PRIOR TO ANY EXCAVATION, AS FOLLOWS:
 KANSAS ONE-CALL 687-2470
 THE CONTRACTOR MUST NOTIFY THE FOLLOWING IN CASE OF AN EMERGENCY:
 AT&T 1-800-246-8464
 BLACK HILLS ENERGY 1-800-694-8599
 CITY OF WICHITA WATER 1-316-268-4555
 CITY OF WICHITA SEWER 1-316-268-4073
 CITY OF WICHITA STORMWATER 1-316-268-4090
 CITY OF WICHITA TRAFFIC 1-316-268-4034
 COX COMMUNICATIONS 1-888-249-3530
 KANSAS GAS SERVICE 1-888-482-4950
 WESTAR ENERGY 1-800-544-4857
- UTILITY SERVICE LINES, POLES, ETC. ARE TO BE ADJUSTED AS NECESSARY BY OTHERS PRIOR TO CONSTRUCTION UNLESS THE PLANS SPECIFICALLY CALL FOR THEIR ADJUSTMENT BY THE CONTRACTOR OR UNLESS THE PLANS SPECIFICALLY IDENTIFY A UTILITY TO BE ADJUSTED BY ITS OWNER DURING CONSTRUCTION. EXISTING UTILITIES AND THEIR LOCATION, AS SHOWN ON THE PLANS, REPRESENT THE BEST INFORMATION OBTAINABLE FOR DESIGN. THE CONTRACTOR WILL BE REQUIRED TO WORK AROUND EXISTING UTILITIES WITHIN THE RIGHT-OF-WAY WHICH DO NOT CONFLICT WITH PROPOSED CONSTRUCTION.
- RUBBLE FROM THE REMOVAL OF MISCELLANEOUS STRUCTURES AND EXCESS EXCAVATION WHICH IS TO BE WASTED SHALL BE DISPOSED OF ON SITES TO BE PROVIDED BY THE CONTRACTOR. THESE SITES SHALL BE APPROVED BY THE ENGINEER AS TO SUITABILITY, APPEARANCE AND SITE LOCATION. LOCATIONS, IN THE OPINION OF THE ENGINEER, THAT WILL LEAVE AN UNSATISFACTORY APPEARANCE WILL NOT BE APPROVED. ALL DISPOSAL SITES MUST BE APPROVED BY THE KANSAS DEPARTMENT OF HEALTH AND ENVIRONMENT. MATERIAL EITHER STOCKPILED OR DISPOSED OF IN A FLOOD PLAIN WOULD REQUIRE A KANSAS STATE BOARD OF AGRICULTURE PERMIT. ANY MATERIAL DUMPED IN WATERS OF THE UNITED STATES OR WETLANDS IS SUBJECT TO U.S. CORPS OF ENGINEERS PERMITTING REQUIREMENTS. ANY MATERIAL BURIED OR STOCKPILED BEYOND APPROVED CONSTRUCTION LIMITS WOULD REQUIRE ADDITIONAL ARCHAEOLOGICAL INVESTIGATIONS UNLESS BURIED IN A PREVIOUSLY APPROVED BORROW LOCATION.
- TREES AND SHRUBS IN PUBLIC RIGHT-OF-WAY WHICH ARE IN DIRECT CONFLICT WITH PROPOSED NEW CONSTRUCTION SHALL BE REMOVED BY THE CONTRACTOR WITH THE ENGINEER'S APPROVAL. TREES AND SHRUBS WHICH ARE NOT IN DIRECT CONFLICT WITH PROPOSED NEW CONSTRUCTION SHALL BE SAVED AND PROTECTED FROM DAMAGE.
- THE CONTRACTOR SHALL GIVE ALL PROPERTY OWNERS AND/OR TENANTS OF DEVELOPED PROPERTY ADJUTING THE CONSTRUCTION OF THIS PROJECT A MINIMUM OF TEN (10) DAYS NOTICE PRIOR TO START OF CONSTRUCTION.
- THE CONTRACTOR SHALL BE RESPONSIBLE FOR PRESERVING PROPERTY IRONS. THE CONTRACTOR WILL BE REQUIRED TO RE-ESTABLISH ANY PROPERTY IRONS WHICH ARE DAMAGED OR DESTROYED BY HIS CONSTRUCTION OPERATIONS. SUCH IRONS SHALL BE RE-ESTABLISHED BY A LICENSED LAND SURVEYOR IN ACCORDANCE WITH STATE LAWS.
- THE WATER DISTRIBUTION DIVISION SHALL FIELD LOCATE WATER VALVES ONE TIME DURING CONSTRUCTION WHEN REQUESTED BY THE CONTRACTOR. IT SHALL BE THE CONTRACTOR'S RESPONSIBILITY TO PRESERVE SUCH FIELD LOCATIONS DURING THE CONSTRUCTION PROCESS. WATER VALVES, VALVE BOXES OR FIRE HYDRANTS DAMAGED DURING CONSTRUCTION SHALL BE REPAIRED BY CONTRACTOR AT HIS OWN EXPENSE. VALVE BOXES AND WATER METERS WITHIN THE PROJECT LIMITS SHALL BE ADJUSTED TO MATCH FIELD GRADES.
- THE CONTRACTOR SHALL NOTIFY THE CONSULTANT ENGINEER AND TOM MASON AT 316-268-4574 WITH THE CITY OF WICHITA WITH THE ANTICIPATED CONSTRUCTION START DATE AND NOTIFY THEM OF PROJECT COMPLETION. STAKING AND INSPECTION FOR THIS PROJECT WILL BE THE RESPONSIBILITY OF THE CONTRACTOR.
- IF TRAFFIC WILL BE IMPACTED BY CONSTRUCTION, A TRAFFIC CONTROL PLAN MUST BE SUBMITTED AND APPROVED BY THE CITY TRAFFIC ENGINEER, BRIAN COON AT 316-268-4574 BEFORE CONSTRUCTION CAN BEGIN. THE CONTRACTOR SHALL BE RESPONSIBLE FOR ALL TRAFFIC CONTROL MEASURES TO FACILITATE CONSTRUCTION. ALL CONSTRUCTION ZONE MARKINGS AND SIGNAGE SHALL CONFORM TO THE LATEST VERSION OF THE MANUAL ON UNIFORM TRAFFIC CONTROL DEVICES (MUTCD) AS PUBLISHED BY THE US DEPT. OF TRANSPORTATION, FEDERAL HIGHWAY ADMINISTRATION. ALL COSTS ASSOCIATED WITH CONSTRUCTION MARKINGS AND SIGNAGE SHALL BE THE CONTRACTOR'S RESPONSIBILITY.
- ALL ELEVATIONS SHOWN ARE U.S.G.S. DATUM (NAVD 88).
- ALL AREAS DISTURBED DURING CONSTRUCTION THAT WILL NOT BE UNDER PROPOSED PAVEMENT SHALL BE RESTORED TO MATCH EXISTING CONDITIONS.
- CONTRACTOR SHALL LIMIT THE EXTENT OF TRENCH OPENINGS OVERNIGHT AND WEEKENDS TO LESS THAN 50 FEET.
- CONTRACTOR SHALL PROVIDE POSITIVE DRAINAGE AWAY FROM ALL MANHOLE COVERS.
- CITY MAINTENANCE OF STORM SEWER ENDS AT RIGHT-OF-WAY OR EASEMENT LINE.
- ANY SIDEWALK, DRIVE APPROACH, OR STREET PAVEMENT REMOVED TO CONSTRUCT PROJECT MUST HAVE A PAVEMENT CUT PERMIT AND BE REPLACED BY THE CITY CONTRACTOR. PERMITS CAN BE OBTAINED BY CALLING 316-268-4501 OR 316-268-4480.
- THE INSPECTING FIRM SHALL SUBMIT TO THE CITY STORMWATER MAINTENANCE DIVISION A DIGITAL COPY OF THE CITY INSPECTION OF THE CONDUITS AND STRUCTURES FOLLOWING CONSTRUCTION. THE DIGITAL FILE FORMATION SHALL BE COMPATIBLE WITH THE CITY INPUT TEMPLATE. A COPY OF THE TEMPLATE IS AVAILABLE UPON REQUEST AT 316-268-4090.
- ALL APPROVED EXCESS EXCAVATION WHICH IS TO BE WASTED SHALL BE STOCKPILED AT NO ADDITIONAL COST TO THE OWNER. STOCKPILED LOCATIONS SHALL BE AS DIRECTED BY THE OWNER AND IN ACCORDANCE WITH GENERAL NOTE NO. 4 ABOVE.

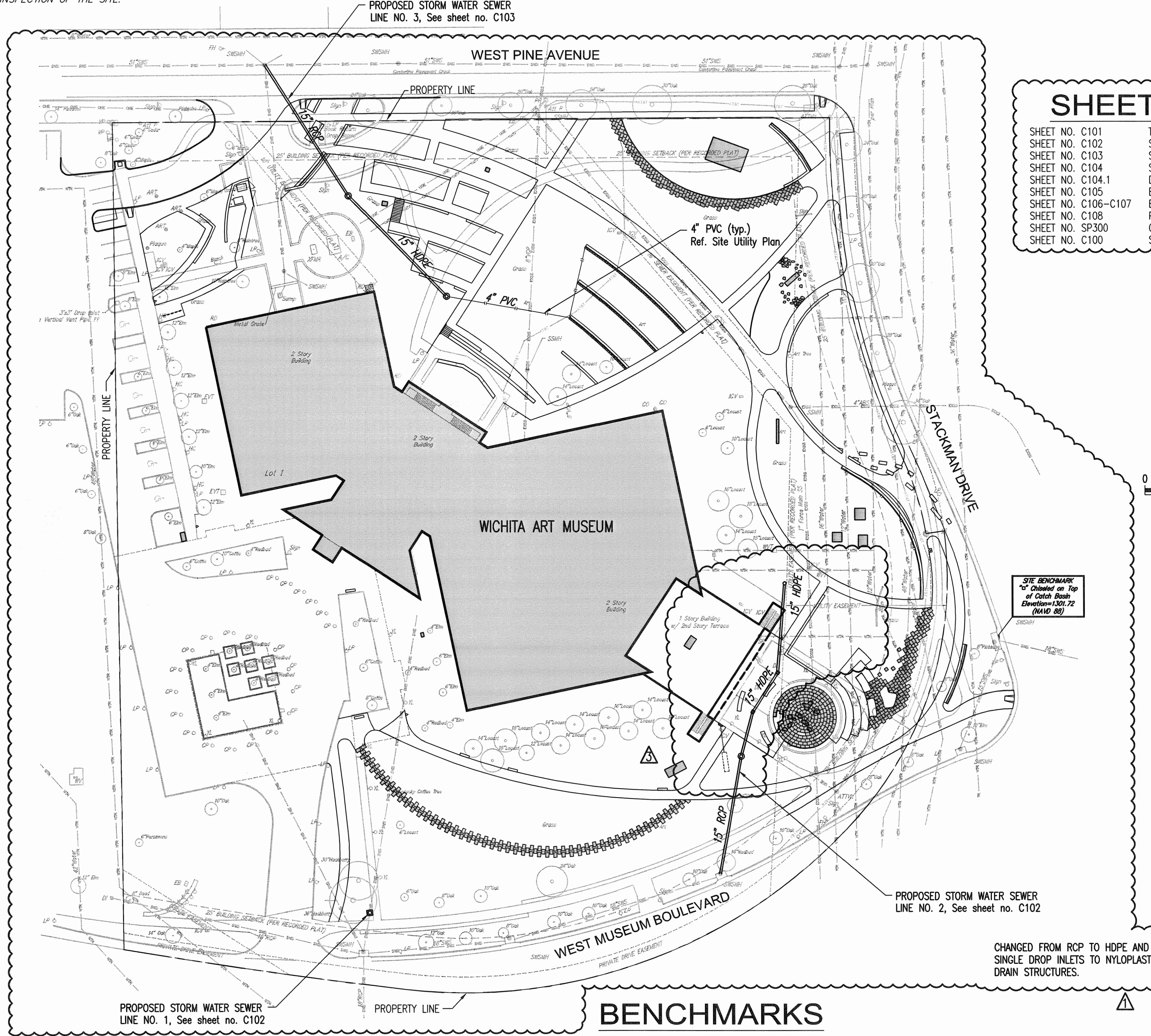
- ALL LAWN/TURF AREAS DISTURBED BY CONSTRUCTION OF THE PROPOSED IMPROVEMENTS SHALL BE RESTORED WITH THE SAME GRASS/SEED AS EXISTING. RESTORATION OF DISTURBED AREAS SHALL INCLUDE, BUT NOT BE LIMITED TO, TOP SOIL PREPARATION, SEEDING, MULCH, AND/OR RESEEDING. ALL SEEDING/SODDING WORK SHALL BE IN ACCORDANCE WITH THE CITY OF WICHITA STANDARD SPECIFICATIONS AND THE CITY OF WICHITA ADMINISTRATIVE REGULATION NO. AR6.5 WHICH GOVERNS CLEANUP AND RESTORATION OR REPLACEMENT FOLLOWING CONSTRUCTION.
- THE CONTRACTOR SHALL SEED ALL AREAS DISTURBED BY CONSTRUCTION ACTIVITIES WITH TEMPORARY RYE GRASS. RYE GRASS SEED SHALL BE PLANTED AT A MINIMUM RATE OF SIX (6) POUNDS PER ONE THOUSAND (1,000) SQUARE FEET. THIS TEMPORARY SEEDING MAY BE OMITTED ONLY IF OTHER SEEDING IS REQUIRED IN ACCORDANCE WITH GENERAL NOTE NO. 19 ABOVE. TEMPORARY SEEDING OR PERMANENT SEEDING/SODDING SHALL BE APPLIED WITHIN 14 DAYS AFTER THE AREA HAS BEEN DISTURBED.
- HOPE PIPE INSTALLATION SHALL BE IN ACCORDANCE WITH THE MANUFACTURER'S SPECIFICATIONS ON SHEET C104.1.
- THE CONTRACTOR SHALL REFERENCE THE CITY OF WICHITA EROSION CONTROL DETAILS (SWS01 - SWS05), AVAILABLE ON THE CITY OF WICHITA WEBSITE AT <http://www.wichita.gov/Government/Departments/PWU/Pages/Regulations.aspx>.

**STORM SEWER IMPROVEMENTS
 WICHITA ART MUSEUM
 ART GARDEN
 CITY OF WICHITA, KANSAS**

Gary Janzen, P.E. City Engineer
 Project Number
 0282 PPD (607861)



Vicinity Map



SHEET INDEX

SHEET NO. C101	TITLE SHEET AND GENERAL NOTES
SHEET NO. C102	SWS PLAN AND PROFILE
SHEET NO. C103	SWS PLAN AND PROFILE
SHEET NO. C104	SINGLE/DOUBLE DROP INLET DETAIL
SHEET NO. C104.1	DRAIN BASIN DETAILS
SHEET NO. C105	EROSION CONTROL PLAN
SHEET NO. C105-C107	EROSION CONTROL DETAILS
SHEET NO. C108	PLAT
SHEET NO. SP300	GRAVING PLAN
SHEET NO. C109	SITE UTILITY PLAN

STORM WATER SEWER SYSTEM IS PRIVATELY OWNED AND MAINTAINED.

Stormwater Certification:
 New Development or Redevelopment
 These construction plans were prepared in accordance with the current Stormwater Management Regulations as set forth in the City of Wichita's Stormwater Management Ordinance 16.32 and the policies/guidelines presented in the Wichita/Sedgwick County Stormwater Manual.
 Disturbed Area = 3.86 ac.
 Water Quality Treatment: The storm drain inlets are located in the lawn areas which will serve as a grass filter BMP for the storm sewer.

APPROVED AS NOTED
 BY WICHITA PUBLIC WORKS ENGINEERING AND STORMWATER DIVISION
 Engineering *Rebecca Dahl 2/3/15*
 Stormwater *Jim Hartley 2/3/15*
 NOTE TO CONTRACTORS
 Installation, inspection and testing for this project is to be provided by a Licensed Consulting Engineering Firm under contract with the Owner/Developer. Said inspection to be in accordance with the City of Wichita standard construction engineering practices and certified by a Licensed Professional Engineer in the state of Kansas. No work shall be performed by the Contractor without such inspection nor shall any work be commenced without written authorization by the City Engineer. All Construction and Materials shall comply with the current City of Wichita Specifications and Standards and Special Provisions. (on file and available at Wichita.gov).
 An approved copy of these plans signed by City staff are required on-site.

JANUARY 2015

AS BUILTS

Contractor: McCullough Excavation, Inc.	Project Inspector: Larry Gann KEMILLER 117 E. Leola, Wichita, KS 67202 (316)264-0242
---	--

PEC PROFESSIONAL ENGINEERING CONSULTANTS, P.A.
 303 SOUTH TOPEKA WICHITA, KS 67202
 316-262-2891 www.pec1.com

SURVEY PERFORMED BY BAUGHMAN COMPANY, P.A.
 SURVEY DATE: AUGUST 1, 2014

BENCHMARKS

Site Benchmark:
 Chiseled square on Top of Catch Basin
 Elevation = 1301.72 (NAVD88)

REVISION SCHEDULE

ISSUE	DATE	DESCRIPTION
1	08.08.2014	DESIGN DEVELOPMENT SET
2	01.16.2015	CONSTRUCTION PERMIT SET
3	02.23.2015	90% CONSTRUCTION DOCUMENT SET
4	11.3.2014	PPD
5	12.11.2014	95% CONSTRUCTION DOCUMENT SET
6	12.17.2014	98% CONSTRUCTION DOCUMENT SET
7	01.16.2015	100% CONSTRUCTION DOCUMENT SET
8	1.28.2015	ASB

ISSUED FOR
 100%
 CONSTRUCTION
 DOCUMENTS
 FOR
 CONSTRUCTION

PPD TITLE SHEET

CONFLUENCE PROJECT NO: 14001KC

C101

Scale: 0' = 1" 11/25/15 PH: J.S. by CAD/CAD, LLC
 U:\Wichita-Cad\021014\141011\WichitaStorm\021014-01-C101-TITLE-SHEET.dwg

LANDSCAPE ARCHITECT
CONFLUENCE
 417 DELAWARE STREET
 KANSAS CITY, MISSOURI 64105
 PH: 816.531.7227
 CONTACT: MATT EVETT

CIVIL ENGINEER
PEC
 303 S. TOPEKA STREET
 WICHITA, KANSAS 67202
 PH: 316.262.2891
 CONTACT: MATT BILLINGSLEA

ELECTRICAL ENGINEER
LIGHTWORKS, INC.
 3618 MAIN STREET
 WESTON, MISSOURI 64098
 PH: 816.640.9948 FAX: 816.640.9970
 CONTACT: KATHI VANDEL

LIGHTING DESIGNER
DEREK PORTER STUDIO
 1907 WYANDOTTE
 KANSAS CITY, MISSOURI 64108
 PH: 816.692.8060
 CONTACT: DEREK PORTER

ART CONSULTANT
VS SITEWORKS
 16218 39TH AVENUE NE
 LAKE FOREST PARK, WASHINGTON 98155
 PH: 206.361.5964
 CONTACT: VICKI SCURI

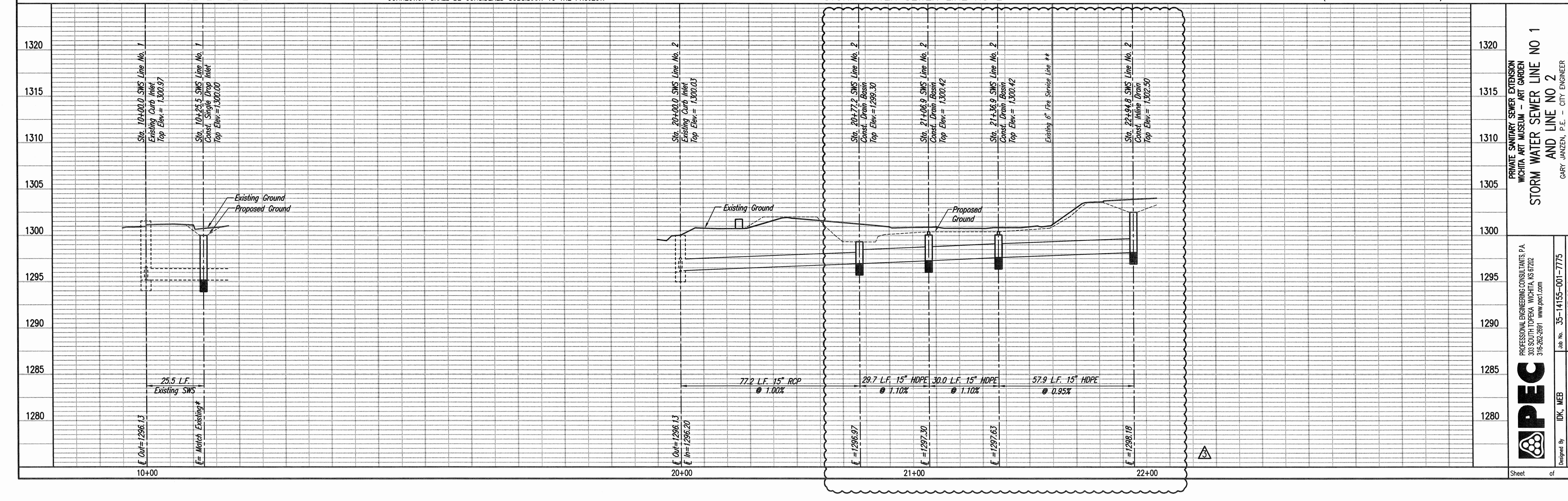
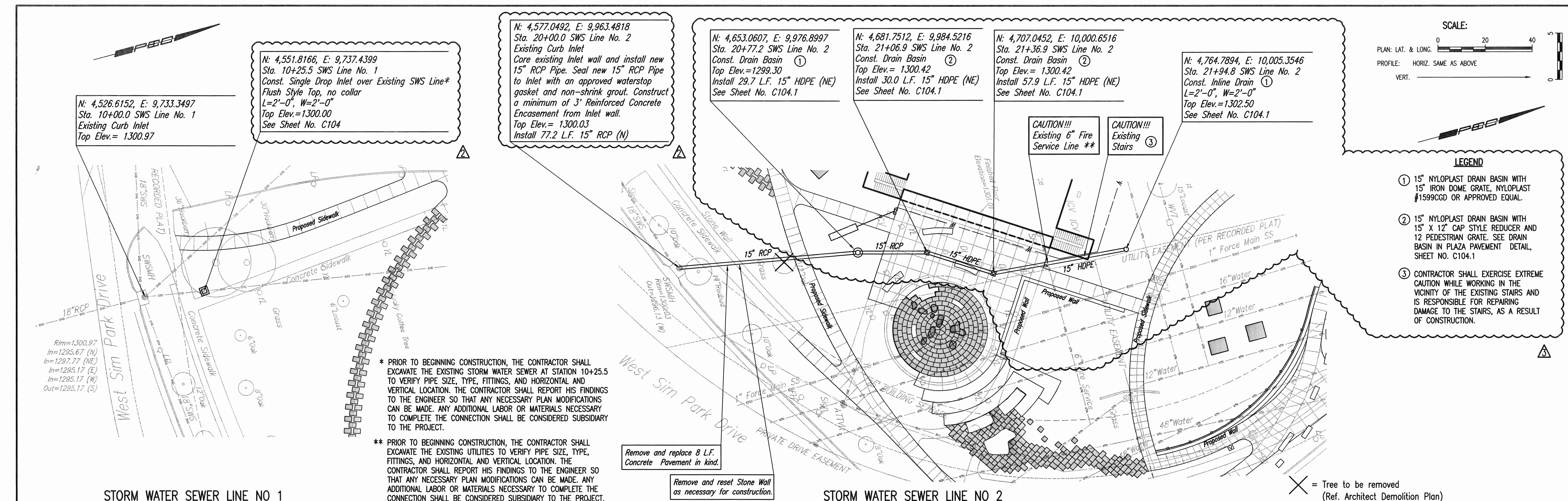


**WICHITA ART MUSEUM
 ART GARDEN**
 1400 WEST MUSEUM BOULEVARD
 WICHITA, KANSAS 67203

ISSUE	DATE	DESCRIPTION
1	06.09.2014	DESIGN DEVELOPMENT SET
2	06.11.2014	LANDSCAPE BID SET
3	09.23.2014	90% CONSTRUCTION DOCUMENT SET
4	11.3.2014	100% CONSTRUCTION DOCUMENT SET
5	12.17.2014	100% CONSTRUCTION DOCUMENT SET
6	01.14.2015	100% CONSTRUCTION DOCUMENT SET
7	01.14.2015	100% CONSTRUCTION DOCUMENT SET
8	1.30.2015	ASB1

ISSUED FOR
 100%
 CONSTRUCTION
 DOCUMENTS
 FOR
 CONSTRUCTION

SWS LINE NO 1
 AND LINE NO 2



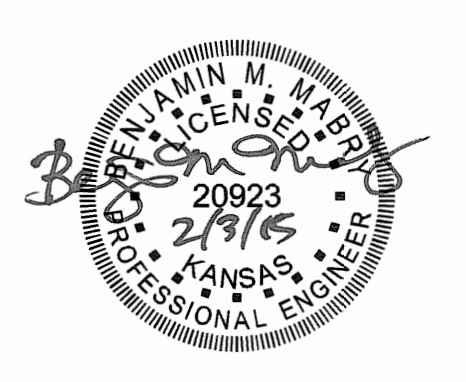
PLAN	CHECKED	DATE

PROFILE	CHECKED	DATE

Save: 02-22-2015 1:46:12 PM by: GARY HANSEN
 U:\Projects\2014\1415\1415-001-C102-SWS Line No 1 and 2

ENTIRE SHEET
 CHANGED FROM RCP TO HDPE AND
 SINGLE DROP INLETS TO NYLOPLAST
 DRAIN STRUCTURES AS SHOWN ON
 THE DRAWINGS.

LANDSCAPE ARCHITECT
CONFLUENCE
 417 DELAWARE STREET
 KANSAS CITY, MISSOURI 64105
 PH: 816.531.7227
 CONTACT: MATT EVETT
 CIVIL ENGINEER
PEC
 303 S. TOPEKA STREET
 WICHITA, KANSAS 67202
 PH: 316.262.2891
 CONTACT: MATT BILLINGSLEA
 ELECTRICAL ENGINEER
LIGHTWORKS, INC.
 3618 MAIN STREET
 WESTON, MISSOURI 64098
 PH: 816.640.9948 FAX: 816.640.9970
 CONTACT: KATHI VANDEL
 LIGHTING DESIGNER
DEREK PORTER STUDIO
 1907 WYANDOTTE
 KANSAS CITY, MISSOURI 64108
 PH: 816.668.8060
 CONTACT: DEREK PORTER
 ART CONSULTANT
VS SITEWORKS
 16218 39TH AVENUE NE
 LAKE FOREST PARK, WASHINGTON 98155
 PH: 206.381.5864
 CONTACT: VICKI SCURI



**WICHITA ART MUSEUM
 ART GARDEN**
 1400 WEST MUSEUM BOULEVARD
 WICHITA, KANSAS 67203

NO.	DATE	DESCRIPTION
1	08.08.2014	DESIGN DEVELOPMENT SET
2	09.11.2014	LANDSCAPE PRELIM
3	09.20.2014	90% CONSTRUCTION DOCUMENT SET
4	11.3.2014	100% CONSTRUCTION DOCUMENT SET
5	12.11.2014	90% CONSTRUCTION DOCUMENT SET
6	12.17.2014	90% CONSTRUCTION DOCUMENT SET
7	01.16.2015	100% CONSTRUCTION DOCUMENT SET
8	1.28.2015	AS-BUILT

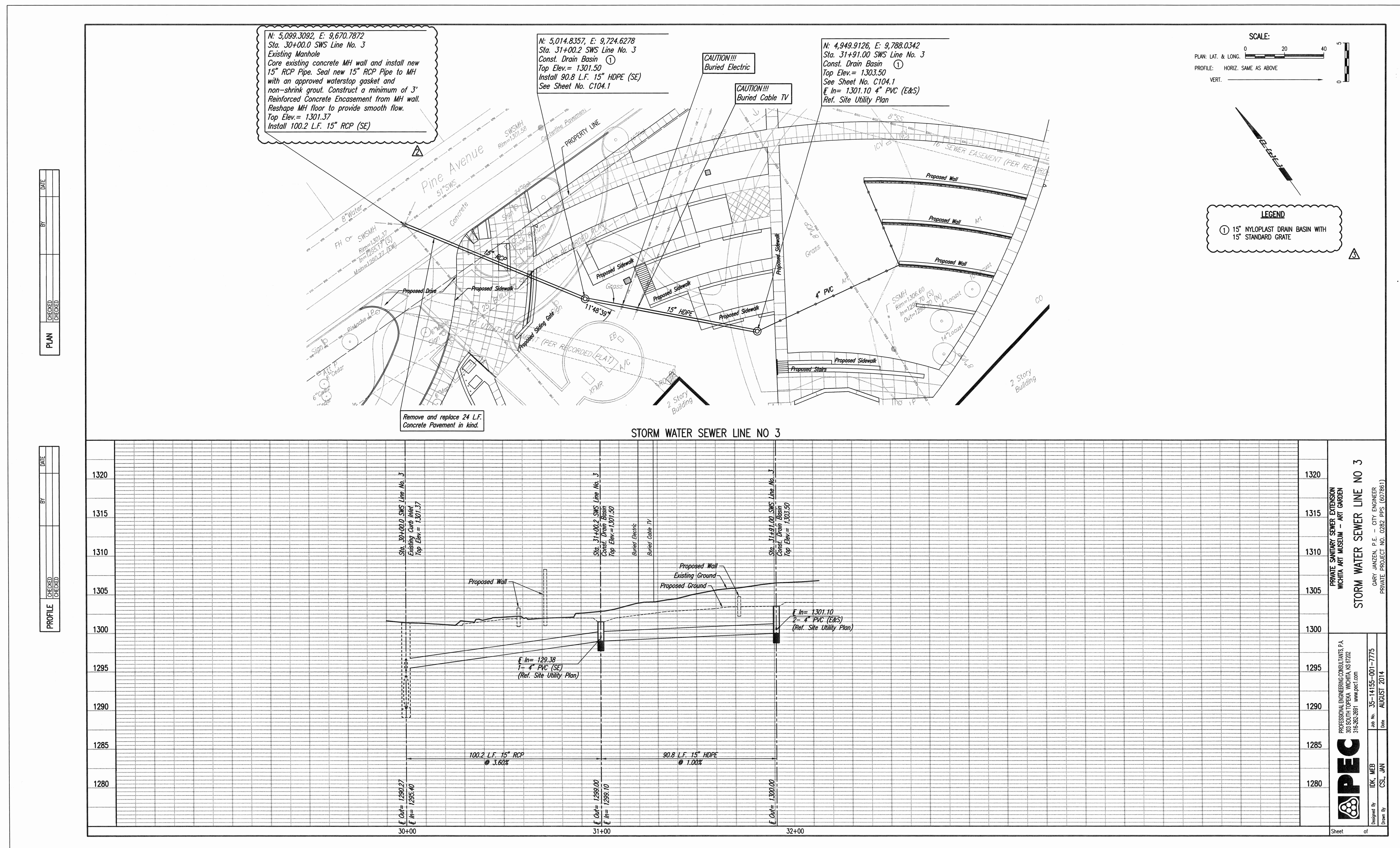
ISSUED FOR
 100%
 CONSTRUCTION
 DOCUMENTS
 FOR
 CONSTRUCTION

Copyright © 2015 by Confluence. All rights reserved. This drawing is provided as an instrument of service by Confluence and is intended for use on the project only. Any reproduction or use of this drawing for any other project without the written consent of Confluence is strictly prohibited.

PPD SWS LINE NO 3

CONFLUENCE PROJECT NO: 14001KC

C103



PLAN

DATE	BY
08/08/14	ME
09/20/14	ME
11/03/14	ME

PROFILE

DATE	BY
08/08/14	ME
09/20/14	ME
11/03/14	ME

ENTIRE SHEET
 CHANGED FROM RCP TO HDPE AND
 SINGLE DROP INLETS TO NYLOPLAST
 DRAIN STRUCTURES AS SHOWN ON
 THE DRAWINGS.

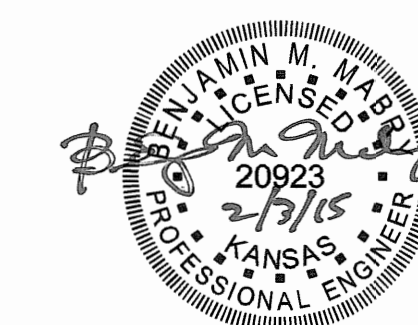
LANDSCAPE ARCHITECT
 CONFLUENCE
 417 DELAWARE STREET
 KANSAS CITY, MISSOURI 64105
 PH: 816.531.7227
 CONTACT: MATT EVETT

CIVIL ENGINEER
 PEC
 303 S. TOPEKA STREET
 WICHITA, KANSAS 67202
 PH: 316.262.2891
 CONTACT: MATT BILLINGSLEA

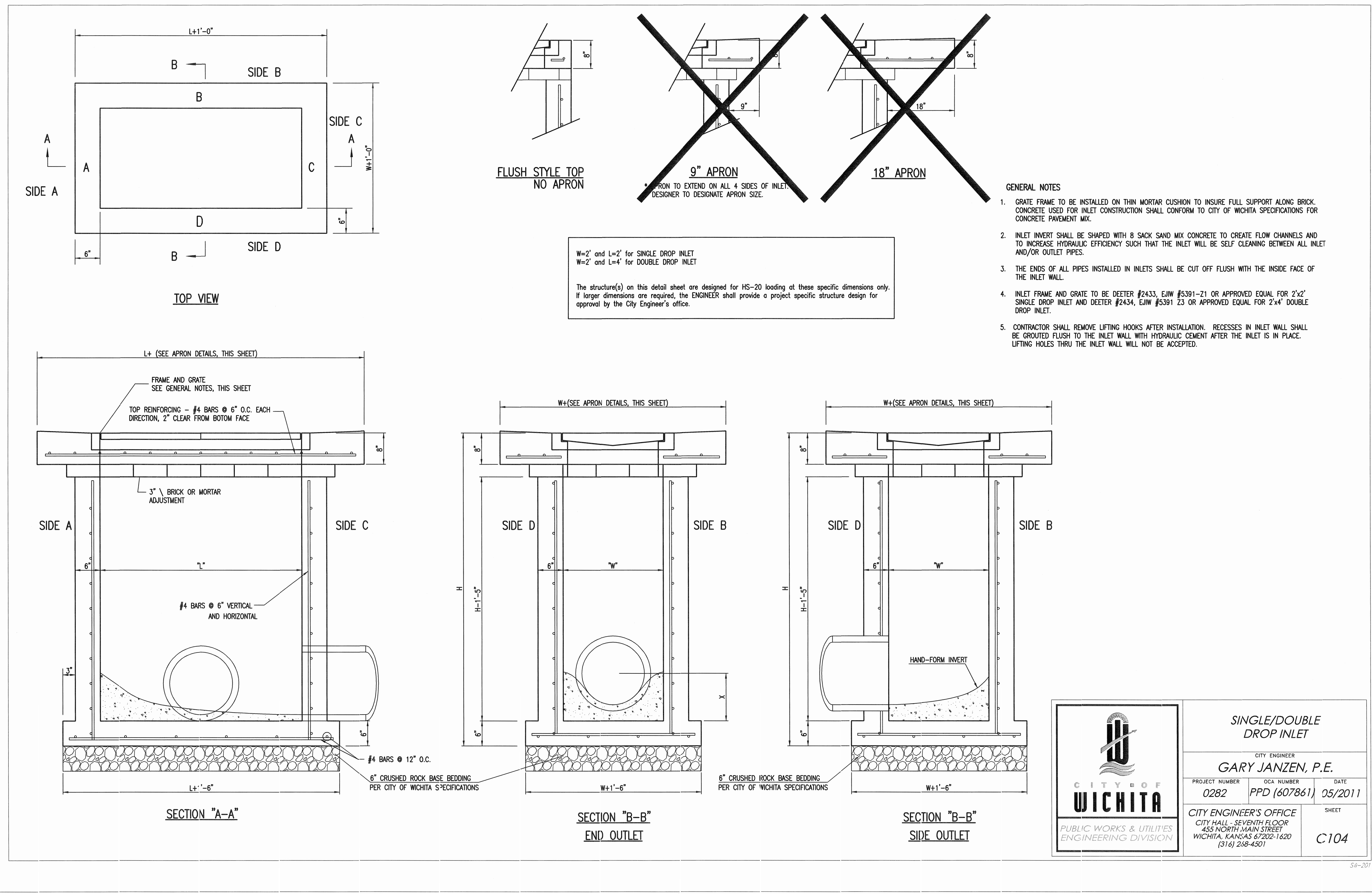
ELECTRICAL ENGINEER
 LIGHTWORKS, INC.
 3618 MAIN STREET
 WESTON, MISSOURI 64098
 PH: 816.640.9948 FAX: 816.640.9970
 CONTACT: KATHI VANDER

LIGHTING DESIGNER
 DEREK PORTER STUDIO
 1907 WYANDOTTE
 KANSAS CITY, MISSOURI 64108
 PH: 816.688.8850
 CONTACT: DEREK PORTER

ART CONSULTANT
 VS SITEWORKS
 16218 30TH AVENUE NE
 LAKE FOREST PARK, WASHINGTON 98155
 PH: 206.361.5964
 CONTACT: VICKI SCURI



WICHITA ART MUSEUM
 ART GARDEN
 1400 WEST MUSEUM BOULEVARD
 WICHITA, KANSAS 67203



<p>CITY OF WICHITA PUBLIC WORKS & UTILITIES ENGINEERING DIVISION</p>	SINGLE/DOUBLE DROP INLET	
	CITY ENGINEER GARY JANZEN, P.E.	
	PROJECT NUMBER 0282	DATE 05/2011
	CITY ENGINEER'S OFFICE CITY HALL - SEVENTH FLOOR 455 NORTH MAIN STREET WICHITA, KANSAS 67202-1620 (316) 268-4301	
SHEET C104		

REVISION SCHEDULE		
ISSUE	DATE	DESCRIPTION
1	08.08.2011	DEVELOPMENT SET
2	08.11.2011	LANDSCAPE SET
3	09.29.2011	60% CONSTRUCTION DOCUMENT SET
4	11.23.2011	PRO
5	12.11.2011	60% CONSTRUCTION DOCUMENT SET
6	12.27.2011	90% CD CONSTRUCTION DOCUMENT SET
7	01.16.2012	100% CD CONSTRUCTION DOCUMENT SET
8	1.20.2012	ASB 01

ISSUED FOR
 100%
 CONSTRUCTION
 DOCUMENTS
 FOR
 CONSTRUCTION

SINGLE DOUBLE
 DROP INLET

CONFLUENCE PROJECT ID: 14001KC


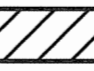

C104

Drawing created by: [unreadable] on: [unreadable] by: [unreadable]
 File Name: [unreadable]
 User: [unreadable]

LANDSCAPE ARCHITECT
CONFLUENCE
 417 DELAWARE STREET
 WICHITA, KANSAS 67202
 PH: 316.262.2691
 CONTACT: MATT EVETT
 CIVIL ENGINEER
PEC
 303 S. TOPEKA STREET
 WICHITA, KANSAS 67202
 PH: 316.262.2691
 CONTACT: MATT BILLINGSLEA
 ELECTRICAL ENGINEER
LIGHTWORKS, INC.
 9018 MAIN STREET
 WESTON, MISSOURI 64098
 PH: 816.640.9948 FAX: 816.640.9970
 CONTACT: KATHI VANDER
 LIGHTING DESIGNER
DEREK PORTER STUDIO
 1907 WYANDOTTE
 KANSAS CITY, MISSOURI 64108
 PH: 816.668.8060
 CONTACT: DEREK PORTER
 ART CONSULTANT
VS SITEWORKS
 16219 30TH AVENUE NE
 LAKE FOREST PARK, WASHINGTON 98155
 PH: 206.361.5964
 CONTACT: VICKI SCOURI

STORM WATER POLLUTION PREVENTION PLAN

LEGEND

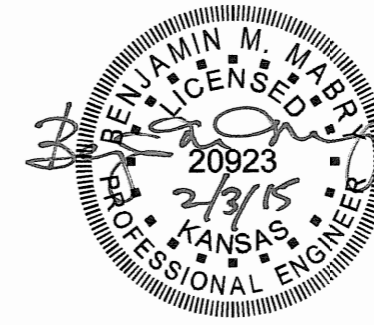
-  PROPOSED INLET PROTECTION
 -  STABILIZED CONSTRUCTION ENTRANCE (FINAL LOCATION DETERMINED BY CONTRACTOR)
 -  SILT FENCE BARRIERS
- (SEE SHEET C106 & C107 FOR DETAILS.)

LOT AREA = 266,238 SQ.FT. (6.11 AC.)
 TOTAL DISTURBED AREA = 168,175 SQ.FT. (3.86 AC.)

NOTES

1. THE EROSION CONTROL DEVICES SHOWN ON THIS SHEET ARE CONSIDERED MINIMUM STANDARDS. WHENEVER SEDIMENT ENTERS STREETS, STORM SEWERS, DITCHES, OR PONDS, THE CONTRACTOR WILL INSTALL ADDITIONAL DEVICES AS NEEDED TO CORRECT THE PROBLEM.
2. THE EROSION CONTROL DEVICES SHOWN HEREON MUST BE IN PLACE AT ALL TIMES DURING CONSTRUCTION UNTIL SUCH TIME AS THE SITE IS REESTABLISHED WITH PAVING OR GRASS. THE CONTRACTOR SHALL INSTALL TEMPORARY OR PERMANENT SEED IN ACCORDANCE WITH ATTACHMENT 'A' OF THE KQHE NOTICE OF INTENT PERMIT.
3. CONTRACTOR TO FURNISH A TRUCK WASH-OUT PIT TO BE PLACED AT A CONVENIENT LOCATION THAT DOES NOT CONFLICT WITH CONSTRUCTION. THE CONTRACTOR SHALL CLEAN OUT AND BACKFILL PIT PRIOR TO FINAL INSPECTION.
4. THE CONTRACTOR SHALL CLEAN UP ANY MUD INADVERTENTLY TRACKED ONTO ANY STREET AT THE END OF EACH DAY'S WORK.
5. THE EROSION CONTROL PLAN IS CONSIDERED A DYNAMIC PLAN. THE CONTRACTOR MAY MAKE CHANGES AS NECESSARY TO MEET PERMIT REQUIREMENTS. ANY CHANGES OR DELETION SHALL BE RECORDED AND KEPT ON SITE AT ALL TIMES.
6. ANY FINES IMPOSED UPON THE OWNER BY THE KANSAS DEPARTMENT OF HEALTH AND ENVIRONMENT (KQHE) DUE TO IMPROPER EROSION CONTROL PRACTICES SHALL BE REIMBURSED BY THE CONTRACTOR.
7. CONTAMINATED SOILS SHALL BE IMMEDIATELY PLACED IN TRUCKS FOR HAULING OFF SITE. NO CONTAMINATED SOILS SHALL BE STOCKPILED ON SITE. EROSION CONTROL MEASURES TO AVOID THE DISCHARGE OF CONTAMINANTS SHALL BE IN ACCORDANCE WITH THE GENERAL NPDES PERMIT PART 7.

PLEASE REFERENCE THE FOLLOWING FOR CITY OF WICHITA EROSION CONTROL DETAIL SHEETS SWS01 THRU SWS05:
<http://www.wichita.gov/Government/Departments/PWU/Pages/Regulations.aspx>
 (select the 'Erosion Control' category under the 'Construction Details' tab)



WICHITA ART MUSEUM
ART GARDEN
 1400 WEST MUSEUM BOULEVARD
 WICHITA, KANSAS 67203

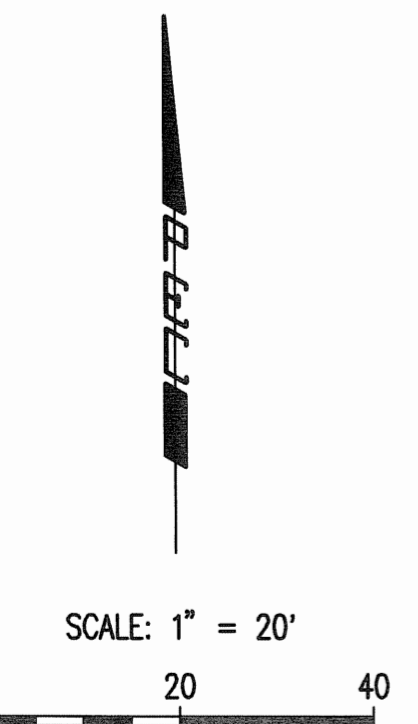
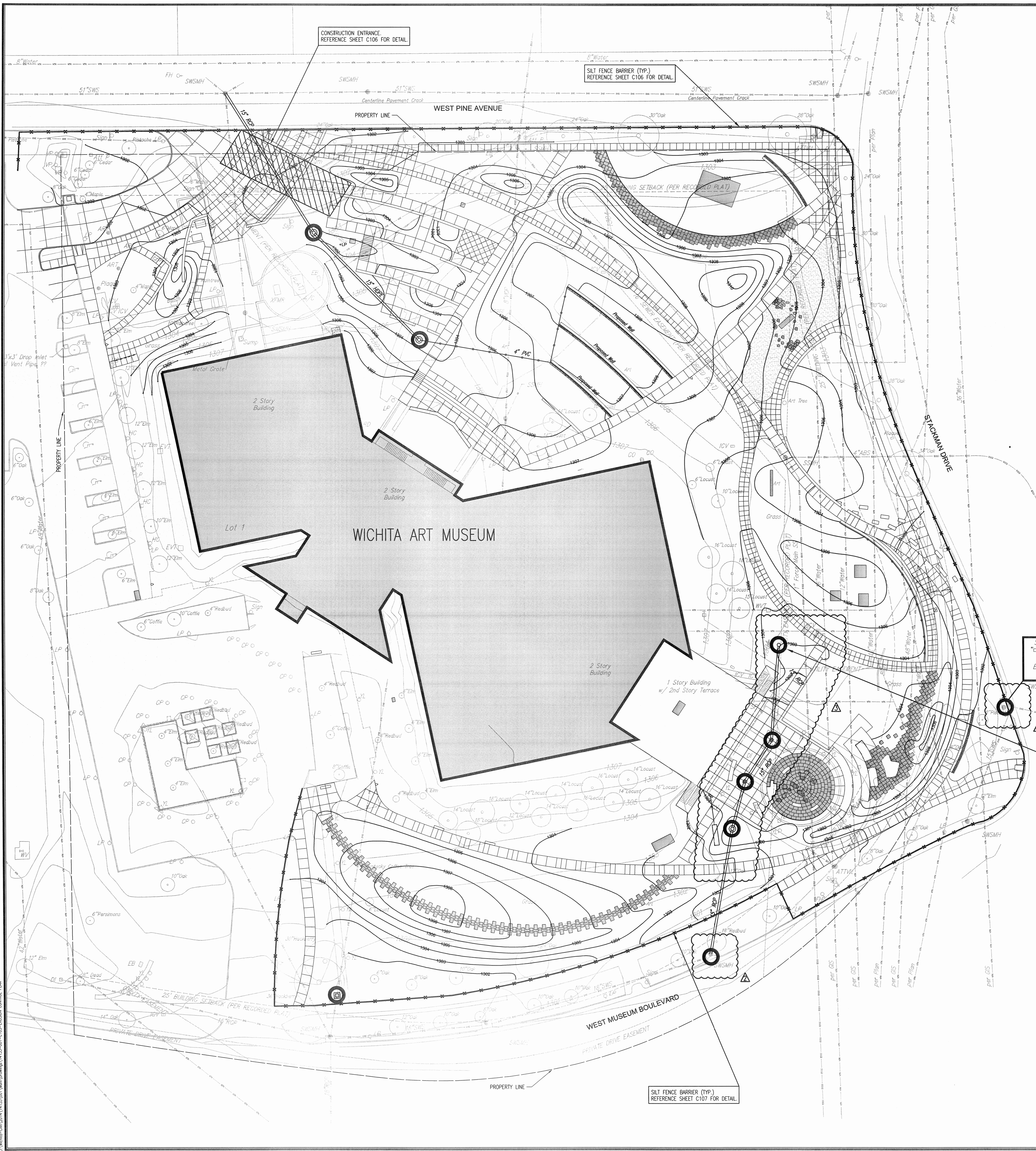
ISSUE	DATE	DESCRIPTION
1	08.08.2014	DESIGN DEVELOPMENT SET
2	08.19.2014	LANDSCAPE ARCHITECTURE SET
3	09.25.2014	60% CONSTRUCTION DOCUMENT SET
4	11.3.2014	PPD
5	11.11.2014	60% CONSTRUCTION DOCUMENT SET
6	12.17.2014	100% CONSTRUCTION DOCUMENT SET
7	01.08.2015	100% CONSTRUCTION DOCUMENT SET
8	1.8.2015	AS-BUILT

ISSUED FOR
 100%
 CONSTRUCTION
 DOCUMENTS
 FOR
 CONSTRUCTION

CONSTRUCTION DOCUMENT SET

EROSION CONTROL PLAN

CONFLUENCE PROJECT NO. 14001KC



CITY OF WICHITA
 PRIVATE PROJECT NO. 0282 PPD (607861)

Some files are not visible in this view. If you are having trouble viewing this document, please contact the author.

LANDSCAPE ARCHITECT
CONFLUENCE
 417 DELAWARE STREET
 KANSAS CITY, MISSOURI 64105
 PH: 816.531.7227
 CONTACT: MATT EVETT

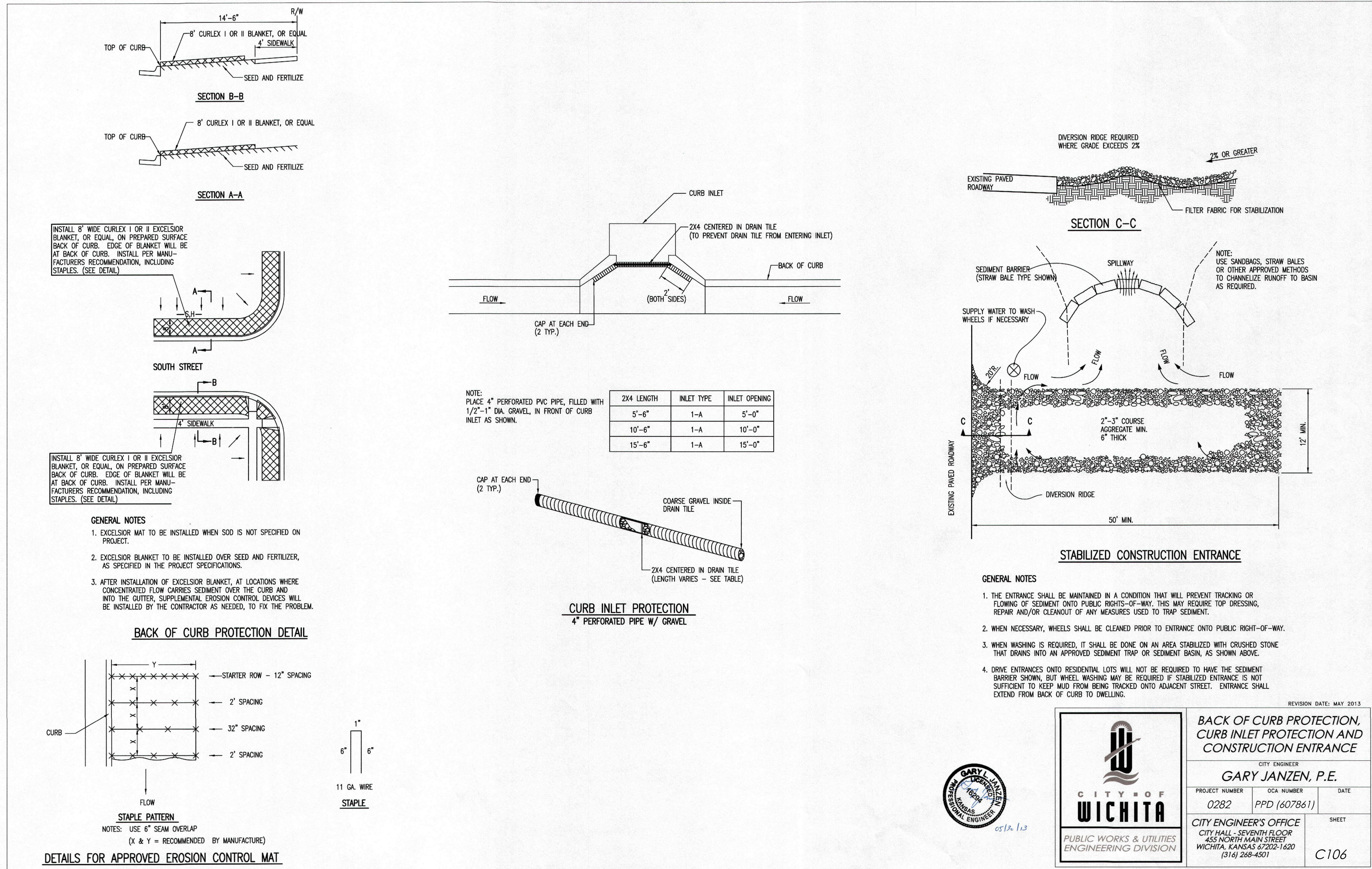
CIVIL ENGINEER
PEC
 303 S. TOPEKA STREET
 WICHITA, KANSAS 67202
 PH: 316.262.2691
 CONTACT: MATT BILLINGSLEA

ELECTRICAL ENGINEER
LIGHTWORKS, INC.
 3818 MAIN STREET
 WESTON, MISSOURI 64098
 PH: 816.640.9948 FAX: 816.640.9970
 CONTACT: KATHI VANDEL

LIGHTING DESIGNER
DEREK PORTER STUDIO
 1907 WYANDOTTE
 KANSAS CITY, MISSOURI 64108
 PH: 816.668.8080
 CONTACT: DEREK PORTER

ART CONSULTANT
VS SITEWORKS
 18218 39TH AVENUE NE
 LAKE FOREST PARK, WASHINGTON 98155
 PH: 206.361.5964
 CONTACT: VICKI SCURI

WICHITA ART MUSEUM
 ART GARDEN
 1400 WEST MUSEUM BOULEVARD
 WICHITA, KANSAS 67203



- GENERAL NOTES**
1. THE ENTRANCE SHALL BE MAINTAINED IN A CONDITION THAT WILL PREVENT TRACKING OR FLOWING OF SEDIMENT ONTO PUBLIC RIGHTS-OF-WAY. THIS MAY REQUIRE TOP DRESSING, REPAIR AND/OR CLEANOUT OF ANY MEASURES USED TO TRAP SEDIMENT.
 2. WHEN NECESSARY, WHEELS SHALL BE CLEANED PRIOR TO ENTRANCE ONTO PUBLIC RIGHT-OF-WAY.
 3. WHEN WASHING IS REQUIRED, IT SHALL BE DONE ON AN AREA STABILIZED WITH CRUSHED STONE THAT DRAINS INTO AN APPROVED SEDIMENT TRAP OR SEDIMENT BASIN, AS SHOWN ABOVE.
 4. DRIVE ENTRANCES ONTO RESIDENTIAL LOTS WILL NOT BE REQUIRED TO HAVE THE SEDIMENT BARRIER SHOWN, BUT WHEEL WASHING MAY BE REQUIRED IF STABILIZED ENTRANCE IS NOT SUFFICIENT TO KEEP MUD FROM BEING TRACKED ONTO ADJACENT STREET. ENTRANCE SHALL EXTEND FROM BACK OF CURB TO DWELLING.

REVISION DATE: MAY 2013

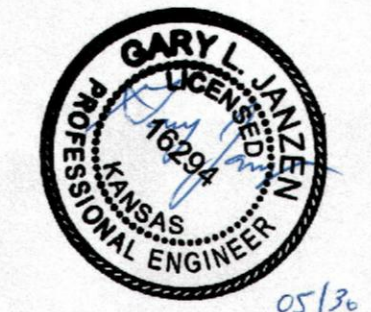
BACK OF CURB PROTECTION, CURB INLET PROTECTION AND CONSTRUCTION ENTRANCE

CITY ENGINEER
GARY JANZEN, P.E.

PROJECT NUMBER: 0282 OCA NUMBER: PPD (607861) DATE: []

CITY ENGINEER'S OFFICE
 CITY HALL - SEVENTH FLOOR
 455 NORTH MAIN STREET
 WICHITA, KANSAS 67202-1520
 (316) 268-4501

SHEET: C106



REVISION SCHEDULE

ISSUE	DATE	DESCRIPTION
1	08.06.2014	DESIGN DEVELOPMENT SET
2	08.11.2014	LANDSCAPE BID SET
3	09.23.2014	50% CONSTRUCTION DOCUMENT SET
4	11.03.2014	75% CONSTRUCTION DOCUMENT SET
5	12.11.2014	90% CONSTRUCTION DOCUMENT SET
6	12.17.2014	95% CONSTRUCTION DOCUMENT SET
7	01.16.2015	100% CONSTRUCTION DOCUMENT SET
8	10.2015	AS-BUILT

ISSUED FOR
 100%
 CONSTRUCTION
 DOCUMENTS
 FOR
 CONSTRUCTION

CONFLUENCE © 2013 BY CONFLUENCE
 ALL RIGHTS RESERVED. THIS DRAWING IS PROVIDED AS AN INSTRUMENT OF SERVICE TO CONFLUENCE AND IS NOT TO BE REPRODUCED OR TRANSMITTED IN ANY FORM OR BY ANY MEANS, ELECTRONIC OR MECHANICAL, INCLUDING PHOTOCOPYING, RECORDING, OR BY ANY INFORMATION STORAGE AND RETRIEVAL SYSTEM, WITHOUT THE EXPRESS WRITTEN CONSENT OF CONFLUENCE IS STRICTLY PROHIBITED.

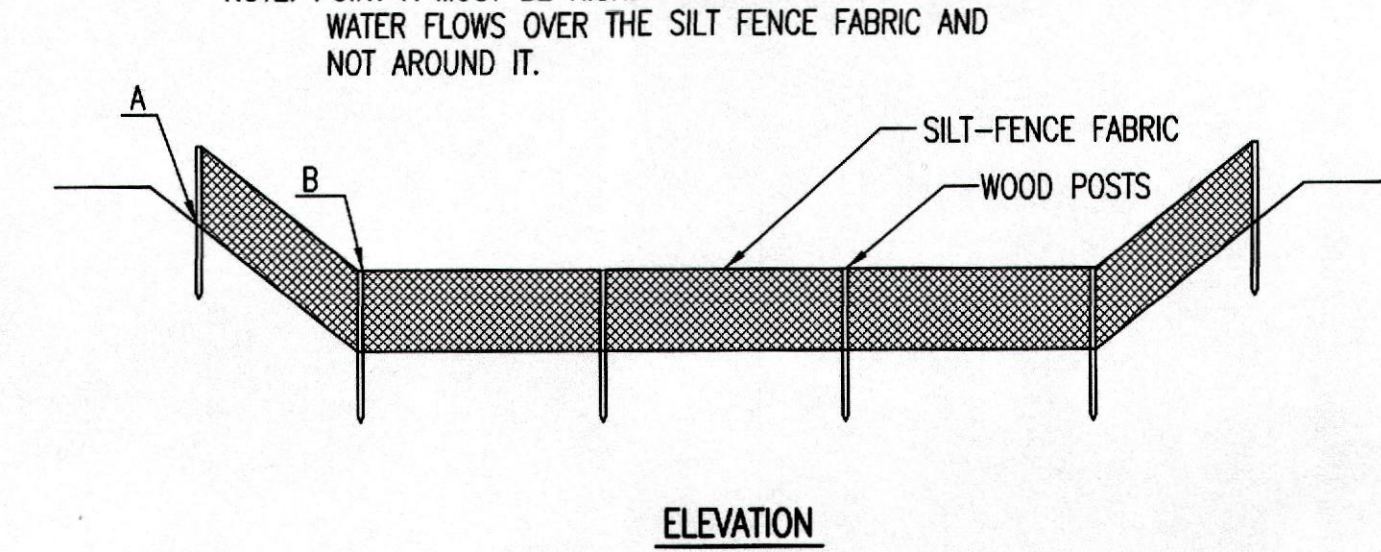
EROSION CONTROL
 DETAILS

CONFLUENCE PROJECT NO. 14001KC

C106

Drawn by: [Name], Checked by: [Name], Date: [Date]
 1400 West Museum Boulevard, Wichita, Kansas 67203
 Phone: 316.262.2691
 Fax: 316.262.2691
 Email: info@confluenceks.com
 Website: www.confluenceks.com

NOTE: POINT A MUST BE HIGHER THAN POINT B SO THAT WATER FLOWS OVER THE SILT FENCE FABRIC AND NOT AROUND IT.



**ELEVATION
SILT FENCE DITCH CHECKS
(STREAM PROTECTION)**

MATERIAL SPECIFICATION:
 SILT FENCE FABRIC SHOULD CONFORM TO THE AASHTO M288 96 SILT FENCE SPECIFICATION. THE POSTS USED TO SUPPORT THE SILT FENCE FABRIC SHOULD BE A HARDWOOD MATERIAL WITH THE FOLLOWING MINIMUM DIMENSIONS: 2" SQUARE (NOMINAL) BY 4' LONG. SILT FENCE FABRIC SHOULD BE ATTACHED TO THE WOODEN POSTS WITH STAPLES, WIRE, ZIP TIES, OR NAILS.

PLACEMENT:
 PLACE SILT FENCE IN DITCHES WHERE IT IS UNLIKELY THAT IT WILL BE OVERTOPPED. WATER SHOULD FLOW THROUGH A SILT FENCE DITCH CHECK, NOT OVER IT. SILT FENCE DITCH CHECKS OFTEN FAIL WHEN OVERTOPPED. SILT FENCE DITCH CHECKS SHOULD BE PLACED PERPENDICULAR TO THE FLOWLINE OF THE DITCH. THE SILT FENCE SHOULD EXTEND FAR ENOUGH SO THAT THE GROUND LEVEL AT THE ENDS OF THE FENCE IS HIGHER THAN THE TOP OF THE LOW POINT OF THE FENCE. THIS PREVENTS WATER FROM FLOWING AROUND THE CHECK. SILT FENCE DITCH CHECKS SHOULD NOT BE PLACED IN DITCHES WHERE HIGH FLOWS ARE EXPECTED. ROCK CHECKS SHOULD BE USED INSTEAD. SILT FENCE SHOULD BE PLACED IN DITCHES WITH SLOPES OF 6% OR LESS. FOR SLOPES STEEPER THAN 6%, ROCK CHECKS SHOULD BE USED.

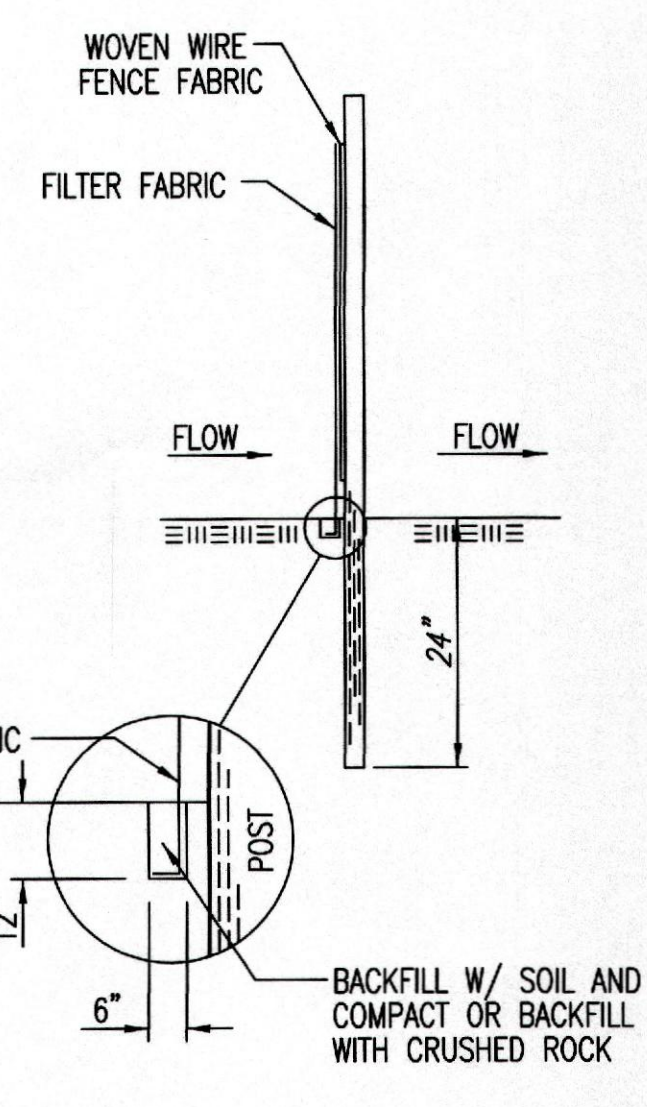
THE FOLLOWING TABLE PROVIDES CHECK SPACING FOR A GIVEN DITCH GRADE:

DITCH CHECK CHECK GRADE (%)	SPACING (FEET)
0.5	200
1.0	200
2.0	100
3.0	65
4.0	50
5.0	40
6.0	30

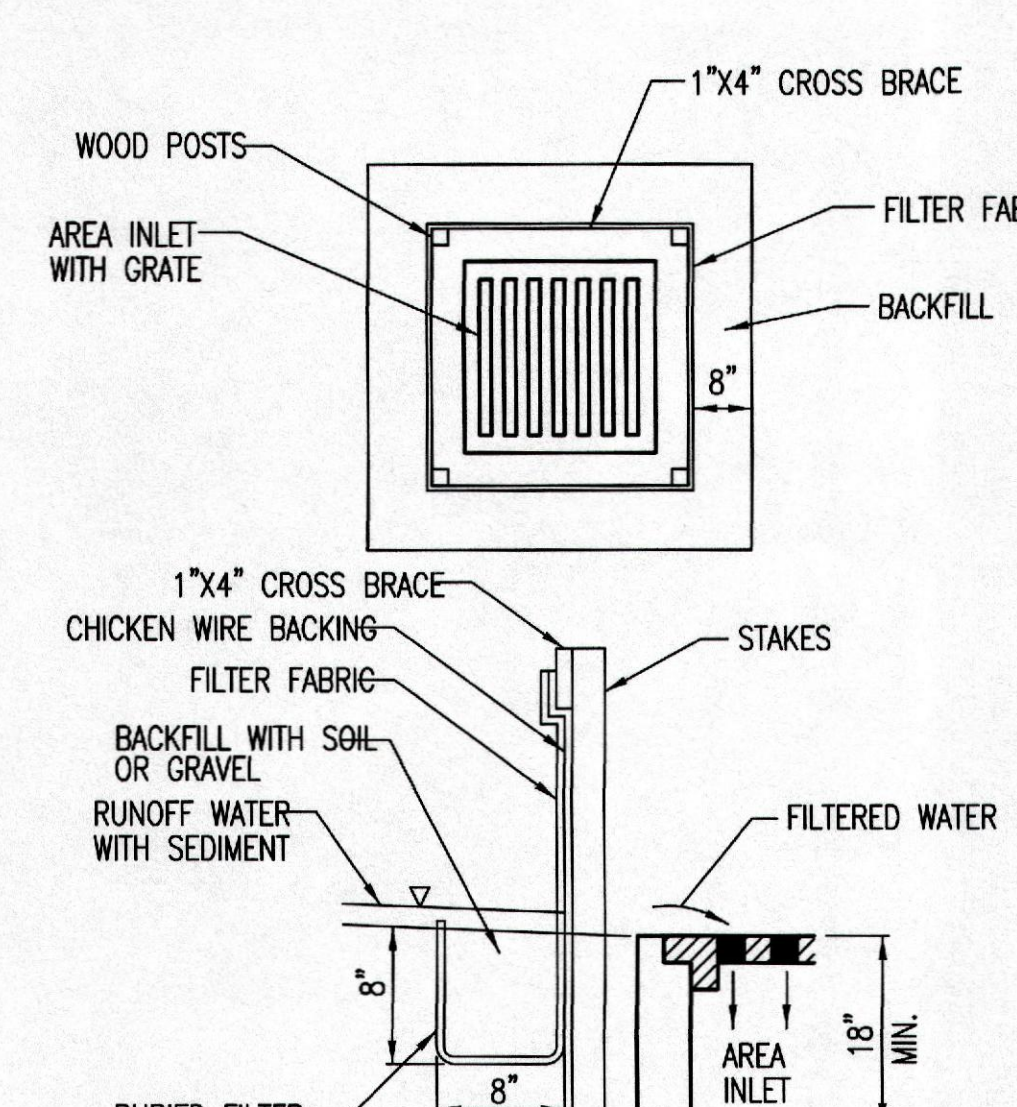
PROPER INSTALLATION METHOD:
 EXCAVATE A TRENCH PERPENDICULAR TO THE DITCH FLOWLINE THAT IS AT LEAST 12" DEEP BY 6" WIDE. EXTEND THE TRENCH IN A STRAIGHT LINE ALONG THE ENTIRE LENGTH OF THE PROPOSED DITCH CHECK. PLACE THE SOIL ON THE UPSTREAM SIDE OF THE TRENCH FOR LATER USE. ROLL OUT A CONTINUOUS LENGTH OF SILT FENCE FABRIC ON THE DOWNSTREAM SIDE OF THE TRENCH. PLACE THE EDGE OF THE FABRIC IN THE TRENCH STARTING AT THE TOP UPSTREAM EDGE OF THE TRENCH. LINE TWO SIDES OF THE TRENCH WITH THE FABRIC AS SHOWN ON DETAIL. BACKFILL OVER THE FABRIC IN THE TRENCH WITH THE EXCAVATED SOIL AND COMPACT. AFTER FILLING THE TRENCH, APPROXIMATELY 24" TO 36" OF SILT FENCE FABRIC SHOULD REMAIN EXPOSED. LAY THE EXPOSED SILT FENCE ON THE UPSTREAM SIDE OF THE TRENCH TO CLEAR AN AREA FOR DRIVING IN THE POSTS. JUST DOWNSTREAM OF THE TRENCH, DRIVE POSTS INTO THE GROUND TO A DEPTH OF AT LEAST 24". PLACE POSTS NO MORE THAN 4' APART. ATTACH THE SILT FENCE TO THE ANCHORED POST WITH STAPLES, WIRE, ZIP TIES, OR NAILS.

LIST OF COMMON PLACEMENT/INSTALLATION MISTAKES TO AVOID:
 WATER SHOULD FLOW THROUGH A SILT FENCE DITCH CHECK—NOT OVER IT. PLACE SILT FENCE IN DITCHES WHERE IT IS UNLIKELY THAT IT WILL BE OVERTOPPED. SILT FENCE INSTALLATIONS QUICKLY DEGRADATE WHEN WATER OVERTOPS THEM. DO NOT PLACE SILT FENCE POSTS ON THE UPSTREAM SIDE OF THE SILT FENCE FABRIC. IN THIS CONFIGURATION, THE FORCE OF THE WATER IS NOT RESTRICTED BY THE POSTS, BUT ONLY BY THE STAPLES (WIRE, ZIP TIES, NAILS, ETC.). THE SILT FENCE WILL RIP AND FAIL. DO NOT PLACE A SILT FENCE DITCH CHECK DIRECTLY IN FRONT OF A CULVERT OUTLET. IT WILL NOT STAND UP TO THE CONCENTRATED FLOW. DO NOT PLACE SILT FENCE DITCH CHECKS IN DITCHES THAT WILL LIKELY EXPERIENCE HIGH FLOWS. THEY WILL NOT STAND UP TO CONCENTRATED FLOW. FOLLOW PRESCRIBED DITCH CHECK SPACING GUIDELINES. IF SPACING GUIDELINES ARE EXCEEDED, EROSION WILL OCCUR BETWEEN THE DITCH CHECKS. DO NOT ALLOW WATER TO FLOW AROUND THE DITCH CHECK. MAKE SURE THAT THE DITCH CHECK IS LONG ENOUGH SO THAT THE GROUND LEVEL AT THE ENDS OF THE FENCE IS HIGHER THAN THE LOW POINT ON THE TOP OF THE FENCE. DO NOT PLACE SILT FENCE DITCH CHECKS IN CHANNELS WITH SHALLOW SOILS UNDERLAIN BY ROCK. IF THE CHECK IS NOT ANCHORED SUFFICIENTLY, IT WILL WASH OUT.

INSPECTION AND MAINTENANCE:
 SILT FENCE DITCH CHECKS SHOULD BE INSPECTED EVERY 7 DAYS AND WITHIN 24 HOURS OF A RAINFALL OF 1/2" OR MORE. THE FOLLOWING IS A LIST OF QUESTIONS THAT SHOULD BE ADDRESSED DURING EACH INSPECTION:
 DOES WATER FLOW UNDER THE DITCH CHECK?
 DOES THE SILT FENCE SAG EXCESSIVELY?
 HAS THE SILT FENCE TORN OR BECOME DETACHED FROM THE POSTS?
 DOES SEDIMENT NEED TO BE REMOVED FROM BEHIND THE DITCH CHECK?



ANCHOR TRENCH DETAIL



**SILT FENCE BARRIERS FOR AREA INLETS
(INLET PROTECTION)**

MATERIAL SPECIFICATION:
 SILT FENCE FABRIC SHOULD CONFORM TO THE AASHTO M288 96 SILT FENCE SPECIFICATION. THE WIRE OR POLYMERIC MESH BACKING USED TO HELP SUPPORT THE SILT FENCE FABRIC SHOULD CONFORM TO THE AASHTO M288 96 SILT FENCE SPECIFICATION. THE POSTS USED TO SUPPORT THE SILT FENCE FABRIC SHOULD BE A HARDWOOD MATERIAL WITH THE FOLLOWING MINIMUM DIMENSIONS: 2" SQUARE (NOMINAL) BY 4' LONG. THE MATERIAL USED TO FRAME THE TOPS OF THE POSTS SHOULD BE 1" BY 4" BOARDS. SILT FENCE FABRIC AND SUPPORT BACKING SHOULD BE ATTACHED TO THE WOODEN POSTS AND FRAME WITH STAPLES, WIRE, ZIP TIES, OR NAILS.

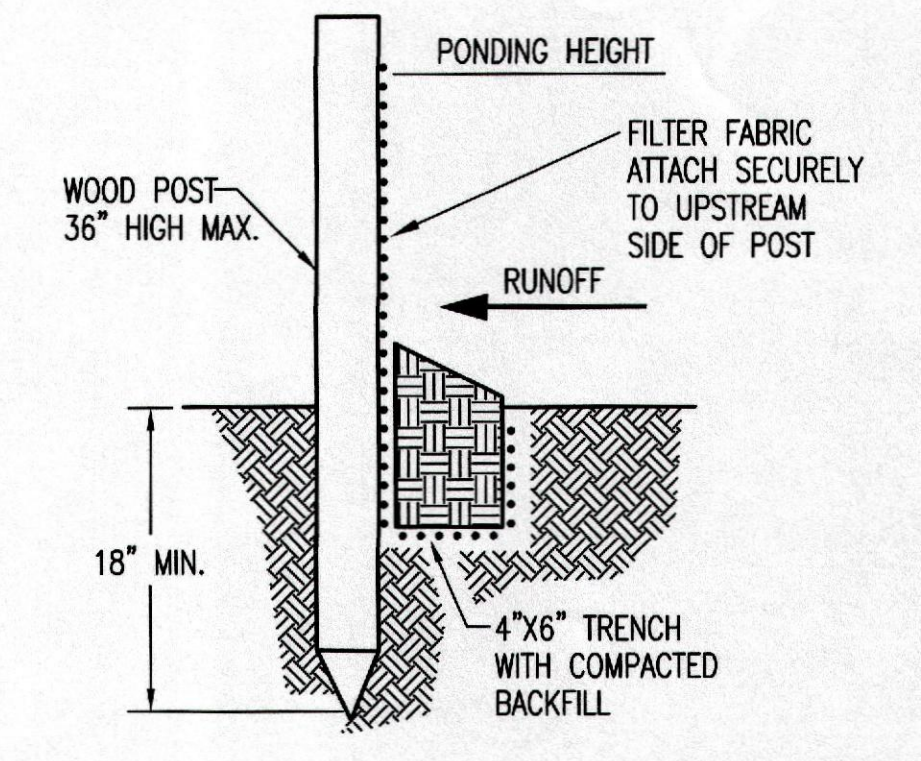
PLACEMENT:
 PLACE A SILT FENCE DROP INLET BARRIER IN A LOCATION WHERE IT IS UNLIKELY TO BE OVERTOPPED. WATER SHOULD FLOW THROUGH SILT FENCE, NOT OVER IT. SILT FENCE BARRIERS FOR AREA INLETS OFTEN FAIL WHEN REPEATEDLY OVERTOPPED. WHEN USED AS A BARRIER FOR AREA INLETS, SILT FENCE FABRIC AND POSTS MUST BE SUPPORTED AT THE TOP BY A WOODEN FRAME. WHEN A SILT FENCE BARRIER FOR AREA INLETS IS LOCATED NEAR AN INLET THAT HAS STEEP APPROACH SLOPES, THE STORAGE CAPACITY BEHIND THE BARRIER IS DRAMATICALLY REDUCED. TIMELY REMOVAL OF SEDIMENT MUST OCCUR FOR A BARRIER TO OPERATE PROPERLY IN THIS LOCATION.

PROPER INSTALLATION METHOD:
 EXCAVATE A TRENCH AROUND THE PERIMETER OF THE AREA INLET THAT IS AT LEAST 8" DEEP BY 8" WIDE. DRIVE POSTS TO A DEPTH OF AT LEAST 18" AROUND THE PERIMETER OF THE AREA INLET. THE DISTANCE BETWEEN POSTS SHOULD BE 4' OR LESS. IF THE DISTANCE BETWEEN TWO ADJACENT CORNER POSTS IS MORE THAN 4', ADD ANOTHER POST(S) BETWEEN THEM. CONNECT THE TOPS OF ALL THE POSTS WITH A WOODEN FRAME MADE OF 1" BY 4" BOARDS. USE NAILS OR SCREWS FOR FASTENING. ATTACH THE WIRE OR POLYMERIC-MESH BACKING TO THE OUTSIDE OF THE POST/FRAME STRUCTURE WITH STAPLES, WIRE, ZIP TIES, OR NAILS. ROLL OUT A CONTINUOUS LENGTH OF SILT FENCE FABRIC LONG ENOUGH TO WRAP AROUND THE PERIMETER OF THE AREA INLET. ADD MORE LENGTH FOR OVERLAPPING THE FABRIC JOINT. PLACE THE EDGE OF THE FABRIC IN THE TRENCH, STARTING AT THE OUTSIDE EDGE OF THE TRENCH. LINE ALL THREE SIDES OF THE TRENCH WITH THE FABRIC. BACKFILL OVER THE FABRIC IN THE TRENCH WITH THE EXCAVATED SOIL AND COMPACT. AFTER FILLING THE TRENCH, APPROXIMATELY 24" TO 36" OF SILT FENCE FABRIC SHOULD REMAIN EXPOSED. ATTACH THE SILT FENCE TO THE OUTSIDE OF THE POST/FRAME STRUCTURE WITH STAPLES, WIRE, ZIP TIES, OR NAILS. THE JOINT SHOULD BE OVERLAPPED TO THE NEXT POST.

NOTE: WHEN A SILT FENCE BARRIER FOR AREA INLET IS PLACED IN A SHALLOW MEDIUM DITCH, MAKE SURE THAT THE TOP OF THE BARRIER IS NOT HIGHER THAN THE PAVED ROAD. IN THIS CONFIGURATION, WATER MAY SPREAD ONTO THE ROADWAY CAUSING A HAZARDOUS CONDITION.

LIST OF COMMON PLACEMENT/INSTALLATION MISTAKES TO AVOID:
 WATER SHOULD FLOW THROUGH A SILT FENCE BARRIER FOR AREA INLET—NOT OVER IT. PLACE A SILT FENCE BARRIER FOR AREA INLET IN A LOCATION WHERE IT IS UNLIKELY TO BE OVERTOPPED. SILT FENCE BARRIER FOR AREA INLETS OFTEN FAIL WHEN REPEATEDLY OVERTOPPED. DO NOT PLACE POSTS ON THE OUTSIDE OF THE SILT FENCE BARRIER FOR AREA INLET. IN THIS CONFIGURATION, THE FORCE OF THE WATER IS NOT RESTRICTED BY THE POSTS, BUT ONLY BY THE STAPLES (WIRE, ZIP TIES, NAILS, ETC.). THE SILT FENCE WILL RIP AND FAIL. DO NOT INSTALL SILT FENCE BARRIER FOR AREA INLETS WITHOUT FRAMING THE TOP OF THE POSTS. THE CORNER POSTS AROUND AREA INLETS ARE STRESSED IN TWO DIRECTIONS WHEREAS A NORMAL SILT FENCE IS ONLY STRESSED IN ONE DIRECTION. THIS ADDED STRESS REQUIRES MORE SUPPORT.

INSPECTION AND MAINTENANCE:
 SILT FENCE BARRIER FOR AREA INLETS SHOULD BE INSPECTED EVERY 7 DAYS AND WITHIN 24 HOURS OF A RAINFALL OF 1/2" OR MORE. THE FOLLOWING IS A LIST OF QUESTIONS THAT SHOULD BE ADDRESSED DURING EACH INSPECTION:
 DOES WATER FLOW UNDER THE SILT FENCE?
 DOES THE SILT FENCE SAG EXCESSIVELY?
 HAS THE SILT FENCE TORN OR BECOME DETACHED FROM THE POSTS?
 DOES SEDIMENT NEED TO BE REMOVED FROM BEHIND THE AREA INLET BARRIER?



SILT FENCE BARRIERS

MATERIAL SPECIFICATION:
 SILT FENCE FABRIC SHOULD CONFORM TO THE AASHTO M288 96 SILT FENCE SPECIFICATION. THE POSTS USED TO SUPPORT THE SILT FENCE FABRIC SHOULD BE A HARDWOOD MATERIAL WITH THE FOLLOWING MINIMUM DIMENSIONS: 2" SQUARE (NOMINAL) BY 4' LONG. SILT FENCE FABRIC SHOULD BE ATTACHED TO THE WOODEN POSTS WITH STAPLES, WIRE, ZIP TIES, OR NAILS.

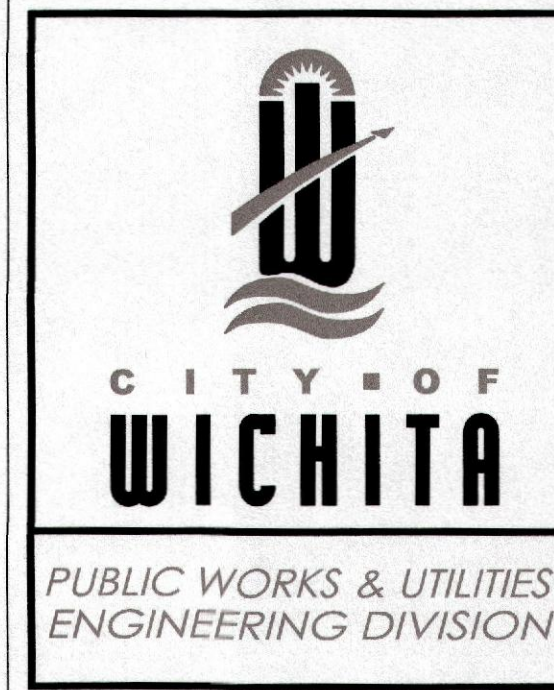
PLACEMENT:
 A SLOPE BARRIER SHOULD BE USED AT THE TOE OF A SLOPE WHEN A DITCH DOES NOT EXIST. THE SLOPE BARRIER SHOULD BE PLACED ON NEARLY LEVEL GROUND 5' TO 10' AWAY FROM THE TOE OF A SLOPE. THE BARRIER IS PLACED AWAY FROM THE TOE OF THE SLOPE TO PROVIDE ADEQUATE STORAGE FOR SETTLING OUT SEDIMENT. WHEN PRACTICABLE, SILT FENCE SLOPE BARRIERS SHOULD BE PLACED ALONG CONTOURS TO AVOID A CONCENTRATION OF FLOW. SILT FENCE SLOPE BARRIERS CAN ALSO BE PLACED ALONG RIGHT-OF-WAY FENCE LINES TO KEEP SEDIMENT FROM CROSSING ONTO ADJACENT PROPERTY. WHEN PLACED IN THIS MANNER, THE SLOPE BARRIER WILL NOT LIKELY FOLLOW CONTOURS.

PROPER INSTALLATION METHOD:
 EXCAVATE A TRENCH THE LENGTH OF THE PLANNED SLOPE BARRIER THAT IS 6" DEEP BY 4" WIDE. MAKE SURE THAT THE TRENCH IS EXCAVATED ALONG A SINGLE CONTOUR. WHEN PRACTICABLE, SLOPE BARRIERS SHOULD BE PLACED ALONG CONTOURS TO AVOID A CONCENTRATION OF FLOW. PLACE THE SOIL ON THE UPSLOPE SIDE OF THE TRENCH FOR LATER USE. ROLL OUT A CONTINUOUS LENGTH OF SILT FENCE FABRIC ON THE DOWNSLOPE SIDE OF THE TRENCH. PLACE THE EDGE OF THE FABRIC IN THE TRENCH STARTING AT THE TOP UPSLOPE EDGE. LINE ALL THREE SIDES OF THE TRENCH WITH THE FABRIC. BACKFILL OVER THE FABRIC IN THE TRENCH WITH THE EXCAVATED SOIL AND COMPACT. AFTER FILLING THE TRENCH, APPROXIMATELY 24" TO 36" OF SILT-FENCE FABRIC SHOULD REMAIN EXPOSED. LAY THE EXPOSED SILT FENCE UPSLOPE OF THE TRENCH TO CLEAR AN AREA FOR DRIVING IN THE POSTS. JUST DOWNSLOPE OF THE TRENCH, DRIVE POSTS INTO THE GROUND TO A DEPTH OF AT LEAST 18". PLACE POSTS NO MORE THAN 4' APART. ATTACH THE SILT FENCE TO THE ANCHORED POST WITH STAPLES, WIRE, ZIP TIES, OR NAILS.

LIST OF COMMON PLACEMENT/INSTALLATION MISTAKES TO AVOID:
 WHEN PRACTICABLE, DO NOT PLACE SILT FENCE SLOPE BARRIERS ACROSS CONTOURS. SLOPE BARRIERS SHOULD BE PLACED ALONG CONTOURS TO AVOID A CONCENTRATION OF FLOW. WHEN THE FLOW CONCENTRATES, IT OVERTOPS THE BARRIER AND THE SILT FENCE SLOPE BARRIER QUICKLY DEGRADATES. DO NOT PLACE SILT-FENCE POSTS ON THE UPSLOPE SIDE OF THE SILT FENCE FABRIC. IN THIS CONFIGURATION, THE FORCE OF THE WATER IS NOT RESTRICTED BY THE POSTS, BUT ONLY BY THE STAPLES (WIRE, ZIP TIES, NAILS, ETC.). THE SILT FENCE WILL RIP AND FAIL. DO NOT PLACE SILT FENCE SLOPE BARRIERS IN AREAS WITH SHALLOW SOILS UNDERLAIN BY ROCK. IF THE BARRIER IS NOT SUFFICIENTLY ANCHORED, IT WILL WASH OUT. SILT FENCE SLOPE BARRIERS MUST BE DUG INTO THE GROUND—SILT FENCE AT GROUND LEVEL DOES NOT WORK BECAUSE WATER WILL FLOW UNDERNEATH.

INSPECTION AND MAINTENANCE:
 SILT FENCE SLOPE BARRIERS SHOULD BE INSPECTED EVERY 7 DAYS AND WITHIN 24 HOURS OF A RAINFALL OF 1/2" OR MORE. THE FOLLOWING IS A LIST OF QUESTIONS THAT SHOULD BE ADDRESSED DURING EACH INSPECTION:
 ARE THERE ANY POINTS ALONG THE SLOPE BARRIER WHERE WATER IS CONCENTRATING?
 DOES WATER FLOW UNDER THE SLOPE BARRIER?
 DOES THE SILT FENCE SAG EXCESSIVELY?
 HAS THE SILT FENCE TORN OR BECOME DETACHED FROM THE POSTS?
 DOES SEDIMENT NEED TO BE REMOVED FROM BEHIND THE SLOPE BARRIER?

**WICHITA ART MUSEUM
 ART GARDEN**
 1400 WEST MUSEUM BOULEVARD
 WICHITA, KANSAS 67203



SILT FENCE DITCH CHECK AND BARRIER DETAILS

CITY ENGINEER
GARY JANZEN, P.E.

PROJECT NUMBER: 0282 OCA NUMBER: PPD (607861) DATE: SHEET: C107

CITY ENGINEER'S OFFICE
 CITY HALL - SEVENTH FLOOR
 455 NORTH MAIN STREET
 WICHITA, KANSAS 67202-1620
 (316) 268-4501

REVISION DATE: MAY 2013

REVISION SCHEDULE		
ISSUE	DATE	DESCRIPTION
1	08.08.2014	DESIGN DEVELOPMENT SET
2	08.11.2014	LANDSCAPE BID SET
3	09.23.2014	50% CONSTRUCTION DOCUMENT SET
4	10.13.2014	75% CONSTRUCTION DOCUMENT SET
5	12.17.2014	90% CONSTRUCTION DOCUMENT SET
6	01.16.2015	100% CONSTRUCTION DOCUMENT SET
8	10.2015	AS-BUILT

ISSUED FOR
 100%
 CONSTRUCTION
 DOCUMENTS
 FOR
 CONSTRUCTION

CONFLUENCE © 2013 BY CONFLUENCE
 ALL RIGHTS RESERVED. THIS DRAWING IS PROVIDED AS AN INSTRUMENT OF SERVICE TO CONFLUENCE. ANY REPRODUCTION OR USE OF THIS DRAWING FOR ANY OTHER PROJECT OR PURPOSE WITHOUT THE WRITTEN CONSENT OF CONFLUENCE IS STRICTLY PROHIBITED.

EROSION CONTROL
 DETAILS

CONFLUENCE PROJECT NO. 14001KC

C107

DRAWN BY: GARY JANZEN, P.E. CHECKED BY: GARY JANZEN, P.E. DATE: 05/13/13
 PROJECT: 0282 OCA: PPD (607861) SHEET: C107

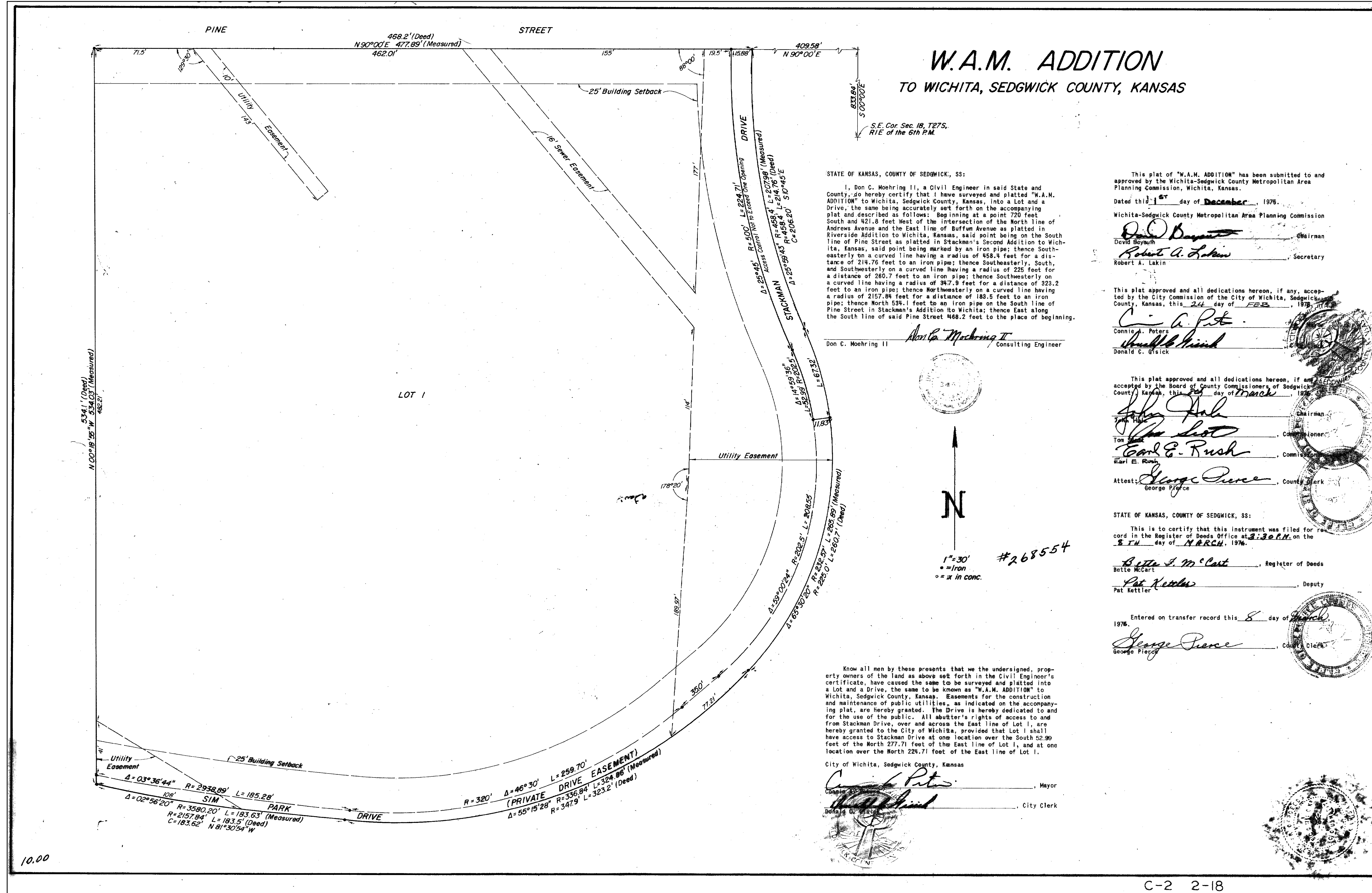
LANDSCAPE ARCHITECT
CONFLUENCE
 417 DELAWARE STREET
 KANSAS CITY, MISSOURI 64105
 PH: 816.531.7227
 CONTACT: MATT EVETT

CIVIL ENGINEER
PEC
 303 S. TOPEKA STREET
 WICHITA, KANSAS 67202
 PH: 316.262.2691
 CONTACT: MATT BILLINGSLEA

ELECTRICAL ENGINEER
LIGHTWORKS, INC.
 3818 MAIN STREET
 WESTON, MISSOURI 64098
 PH: 816.640.9948 FAX: 816.640.9970
 CONTACT: KATHI VANDEL

LIGHTING DESIGNER
DEREK PORTER STUDIO
 1907 WYANDOTTE
 KANSAS CITY, MISSOURI 64108
 PH: 816.668.8000
 CONTACT: DEREK PORTER

ART CONSULTANT
VS SITEWORKS
 18218 39TH AVENUE NE
 LAKE FOREST PARK, WASHINGTON 98155
 PH: 206.361.5964
 CONTACT: VICKI SCURI



WICHITA ART MUSEUM
 ART GARDEN
 1400 WEST MUSEUM BOULEVARD
 WICHITA, KANSAS 67203

ISSUE	DATE	DESCRIPTION
1	08.06.2014	DESIGN DEVELOPMENT SET
2	08.11.2014	LANDSCAPE BID SET
3	09.23.2014	50% CONSTRUCTION DOCUMENT SET
4	11.03.2014	PH
5	11.11.2014	75% CONSTRUCTION DOCUMENT SET
6	12.17.2014	90% CONSTRUCTION DOCUMENT SET
7	01.16.2015	95% CONSTRUCTION DOCUMENT SET
8	10.2015	AS-BUILT

ISSUED FOR
 100%
 CONSTRUCTION
 DOCUMENTS
 FOR
 CONSTRUCTION

CONFLUENCE © 2015 BY CONFLUENCE
 ALL RIGHTS RESERVED. THIS DRAWING IS PROVIDED AS AN INSTRUMENT OF SERVICE TO CONFLUENCE AND IS NOT TO BE REPRODUCED OR TRANSMITTED IN ANY FORM OR BY ANY MEANS, ELECTRONIC OR MECHANICAL, INCLUDING PHOTOCOPYING, RECORDING, OR BY ANY INFORMATION STORAGE AND RETRIEVAL SYSTEM. WITHOUT THE WRITTEN CONSENT OF CONFLUENCE IS STRICTLY PROHIBITED.

PLAT
 CONFLUENCE PROJECT NO. 14001KC

C108

Scale: 1" = 30' - 1/4" = 15' - 1/8" = 7.5' - 1/16" = 3.75' - 1/32" = 1.875' - 1/64" = 0.9375'

LANDSCAPE ARCHITECT
CONFLUENCE
 417 DELAWARE STREET
 KANSAS CITY, MISSOURI 64105
 PH: 816.531.7227
 CONTACT: MATT EVETT

CIVIL ENGINEER
PEC
 303 S TOPEKA STREET
 WICHITA, KANSAS 67202
 PH: 316.262.2691
 CONTACT: MATT BILLINGSLEA

ELECTRICAL ENGINEER
LIGHTWORKS, INC.
 3618 MAIN STREET
 WESTON, MISSOURI 64098
 PH: 816.600.9848 FAX: 816.640.9970
 CONTACT: KATHI VANDEL

LIGHTING DESIGNER
DEREK PORTER STUDIO
 1907 WYANDOTTE
 KANSAS CITY, MISSOURI 64108
 PH: 816.688.8900
 CONTACT: DEREK PORTER

ART CONSULTANT
VS SITEWORKS
 16218 39TH AVENUE NE
 LAKE FOREST PARK, WASHINGTON 98155
 PH: 206.361.5964
 CONTACT: VICKI SCURI



**WICHITA ART MUSEUM
 ART GARDEN**
 1400 WEST MUSEUM BOULEVARD
 WICHITA, KANSAS 67203

GRADING NOTES

1. ALL SPOT ELEVATIONS ARE AT THE TOP OF FINISHED SURFACES. SPOT ELEVATIONS SHOWN IN PARKING ARE AT THE BOTTOM OF CURB. ADD 6" TO COMPLETE TOP OF CURB ELEVATION.
2. PRIOR TO ANY SITE EXCAVATION, THE CONTRACTOR SHALL EXAMINE ANY APPLICABLE DRAWINGS AVAILABLE FROM THE OWNER AND/OR LANDSCAPE ARCHITECT, AND CONSULT WITH OWNER'S REPRESENTATIVES TO DETERMINE POSSIBLE UTILITY LOCATIONS AND DEPTHS. NO COMPENSATION WILL BE ALLOWED FOR DAMAGE RESULTING FROM FAILURE TO COMPLY WITH THIS REQUIREMENT.
3. SEE CIVIL DRAWINGS FOR EROSION CONTROL MEASURES.
4. FINAL BERM SHAPE TO BE APPROVED BY LANDSCAPE ARCHITECT.
5. SEE SPECS FOR MINIMUM DEPTH OF TOPSOIL FOR ALL LAWN AREAS AND PLANTING BEDS.
6. ALL DEBRIS SPILLED ON THE R.O.W. SHALL BE PICKED UP BY THE CONTRACTOR AT THE END OF EACH WORK DAY.
7. CONTRACTOR TO FIELD ADJUST ALL EXISTING SITE UTILITIES TO NEW FINISHED GRADES. EXISTING UTILITIES INCLUDE, BUT ARE NOT LIMITED TO, FIRE HYDRANTS, MANHOLE RIMS, INLETS, WATER VALVES, AND LIGHT BASES.
8. BACK FILL TO TOP OF CURB
9. THE CONTRACTOR SHALL BE RESPONSIBLE FOR POSITIVE SURFACE DRAINAGE IN ALL AREAS, UNLESS OTHERWISE NOTED. ALL NEWLY GRADED GROUND SURFACES SHALL BE FINISHED TO UNIFORM GRADES AND SLOPED IN SUCH A MANNER TO BE FREE OF DEPRESSIONS THAT CAUSE AREAS OF STANDING WATER. THE CONTRACTOR SHALL REPORT ANY CONFLICTS WITH THIS REQUIREMENT TO THE LANDSCAPE ARCHITECT FOR RESOLUTION PRIOR TO FINAL GRADING OPERATIONS.
10. WHERE PROPOSED GRADES MEET EXISTING, BLEND GRADES TO PROVIDE A SMOOTH TRANSITION BETWEEN THE NEW WORK AND EXISTING WORK. PONDING AT JOINTS WILL NOT BE ACCEPTED.
11. CONTRACTOR RESPONSIBLE FOR ALL PRIVATE LOCATES NOT COVERED BY THE ONE CALL SYSTEM. THE CONTRACTOR SHALL VERIFY THE LOCATION AND PROTECT ALL UTILITIES AND STRUCTURES PRIOR TO INSTALLATION OF THE LANDSCAPE. DAMAGE TO UTILITIES AND STRUCTURES SHALL BE REPAIRED BY THE CONTRACTOR TO THE SATISFACTION OF THE OWNER OF THE UTILITIES AT THE CONTRACTOR'S EXPENSE.
12. CONTRACTOR TO FIELD ADJUST ALL EXISTING SITE UTILITIES TO NEW FINISHED GRADES IF NECESSARY. EXISTING UTILITIES INCLUDE, BUT ARE NOT LIMITED TO, FIRE HYDRANTS, MANHOLE RIMS, INLETS, WATER VALVES AND LIGHT BASES.
13. PER PUBLIC WORKS, THREE FOOT (3) MAXIMUM OF ADDITIONAL GRADE IS ALLOWED OVER THE EXISTING WATER LINE AT THE PRAIRIE BERM LOCATION.



SITE BENCHMARK
 Chiseled in
 of Catch Bas
 Elevation=130
 (NAVD 88)

REVISION SCHEDULE		
ISSUE	DATE	DESCRIPTION
1	08/28/2014	DESIGN DEVELOPMENT SET
2	09/10/2014	LANDSCAPE REVISION SET
3	09/23/2014	50% CONSTRUCTION DOCUMENT SET
4	11/20/2014	60% CONSTRUCTION DOCUMENT SET
5	12/11/2014	65% CONSTRUCTION DOCUMENT SET
6	12/17/2014	70% CONSTRUCTION DOCUMENT SET
7	01/16/2015	75% CONSTRUCTION DOCUMENT SET
8	1/20/2015	80% CONSTRUCTION DOCUMENT SET

ISSUED FOR
 100%
 CONSTRUCTION
 DOCUMENTS
 FOR
 CONSTRUCTION

COPYRIGHT © 2015 BY CONFLUENCE
 ALL RIGHTS RESERVED. THIS DRAWING IS PROVIDED AS AN INSTRUMENT OF SERVICE BY CONFLUENCE, AND IS INTENDED FOR USE ON THE PROJECT ONLY. ANY REPRODUCTION, USE OR DISSEMINATION OF THIS DRAWING FOR OTHER PROJECTS WITHOUT THE WRITTEN CONSENT OF CONFLUENCE IS STRICTLY PROHIBITED.

GRADING PLAN

CONFLUENCE PROJECT NO.: 14001KC

SP300

