

GENERAL NOTES:

- Contractor will be required to provide notice to utility companies a minimum of forty-eight (48) hours prior to any excavation, as follows:
 Kansas One-Call 687-2470
 The Contractor must notify the following in case of an emergency:
 Cox Communications 262-4270
 Kansas Gas Service 1-888-482-4950
 Westar Energy 383-8650
 Aquila Energy 1-800-303-0357
 SBC 268-2245
 City of Wichita Water Dept. 268-4563
 City of Wichita Sewer Maint. 268-4024
 City of Wichita Storm Sewer Maint. 268-4090
 City of Wichita Traffic Maint. 268-4034
 Conoco Phillips Pipeline Co. 1-877-267-2290
 Southern Star Pipeline Co. 529-6600
 Kinder-Morgan Pipeline Co. 1-888-844-5658
 Enbridge Pipelines (913) 764-6015
- Utility service lines, poles, valve boxes, meters, and etcetera are to be adjusted as necessary by others prior to construction unless the plans specifically call for their adjustment by the Contractor or unless the plans specifically identify a utility to be adjusted by its owner during construction. Existing utilities and their location, as shown on the plans, represent the best information obtainable for design. The Contractor will be required to work around existing utilities within the right-of-way which do not conflict with proposed construction. The contractor shall coordinate all crossings and construction near existing utilities with the owner of that utility. (Electric - Westar Energy, CATV - Cox Communications, Gas - Aquila, and Phone - AT&T)
- Rubble from the removal of miscellaneous structures and excess excavation which is to be wasted shall be disposed of on sites to be provided by the Contractor. These sites shall be approved by the Engineer as to suitability, appearance and site location. Locations, in the opinion of the Engineer, that will leave an unsightly appearance will not be approved. All disposal sites must be approved by the Kansas Department of Health and Environment. Material either stockpiled or disposed of in a flood plain would require a Kansas State Board of Agriculture permit. Any material dumped in waters of the United States or wetlands is subject to U.S. Corps. of Engineers permitting regulations. Any material buried or stockpiled beyond approved construction limits would require additional archaeological investigations unless buried in a previously approved borrow location.
- Unless specifically noted on plans, trees and shrubs in public right-of-way which are in direct conflict with proposed new construction shall be removed by the Contractor ONLY with the Developer or Baughman Company approval. Trees and shrubs which are not in direct conflict with proposed new construction shall be saved and protected from damage.
- The Contractor shall give all property owners and/or tenants of developed property abutting the construction of this project a minimum of ten (10) days notice prior to start of construction.
- The Contractor shall be responsible for preserving property irons. The Contractor will be required to re-establish any property irons which are damaged or destroyed by his construction operations. Such irons shall be re-established by a licensed land surveyor in accordance with state laws
- All existing and proposed erosion control measures including silt fencing, erosion control mat, straw bales, inlet barriers, and const. entrance shall be maintained throughout construction by the contractor and until project is accepted by the City of Wichita. The on-site engineer shall complete weekly reports on the status of erosion control measures. The contractor shall be required to comply with maintenance and/or replacement of erosion control measures as determined by the on-site engineer until project is accepted by City of Wichita.
- The contractor shall adjust valve boxes as necessary to match proposed grade. Cost to be included in bid item, "Site Clearing & Restoration."
- A saw cut of at least one-half the depth of existing surface courses or one-fourth the depth of the existing total pavement thickness shall be provided at locations where proposed construction abuts the existing surface course or pavement for which partial removal of that surface or pavement is required. Sawed joint to facilitate removal within three (3) feet of existing joints will not be permitted and for such instances the limits of removal shall extend to the existing joint. Such saw cuts will not be paid for directly and this cost shall be considered as subsidiary to the removal of the surface or pavement.
- All areas disturbed during construction shall be seeded at 300 lbs./acre with Rye Grass immediately following construction in that area. Contractor shall prepare ground per City Specifications.
- The Contractor shall drain any standing water in sump areas of the proposed pavement. Contractor shall overexcavate and recompact these areas as required to maintain compaction of 95% Standard Proctor Density. Cost to be incidental to pavement.
- The developer for this project is Jay Russell, (316) 722-2417
- Due to proposed listing of the Northern Long-Eared bat as a threatened/endangered species, tree removal will likely not be allowed between May 1, 2015 and October 31, 2015. Due to this information, all tree removal for this project must be completed prior to May 1, 2015. Contractor and/or subcontractors will be required to mobilize/de-mobilize as necessary to accomplish required tree removal. If the tree removal as noted on the plans is not completed prior to May 1 and causes delays in construction, working days will continue to be charged until substantial completion is reached. Liquidated damages will be assessed per City of Wichita Standard Specifications.

STREET PAVING IMPROVEMENTS FOR 37TH CT. N to serve TYLER'S LANDING 5TH ADDITION

37th Ct. N. from the South Line of 37th Street North,
south to and including the cul-de-sac
Median Modification Improvements on 37th St. N.

CITY OF WICHITA, KANSAS

Gary Janzen, P.E. City Engineer

Project Number

472-85193

O.C.A. Number

766331

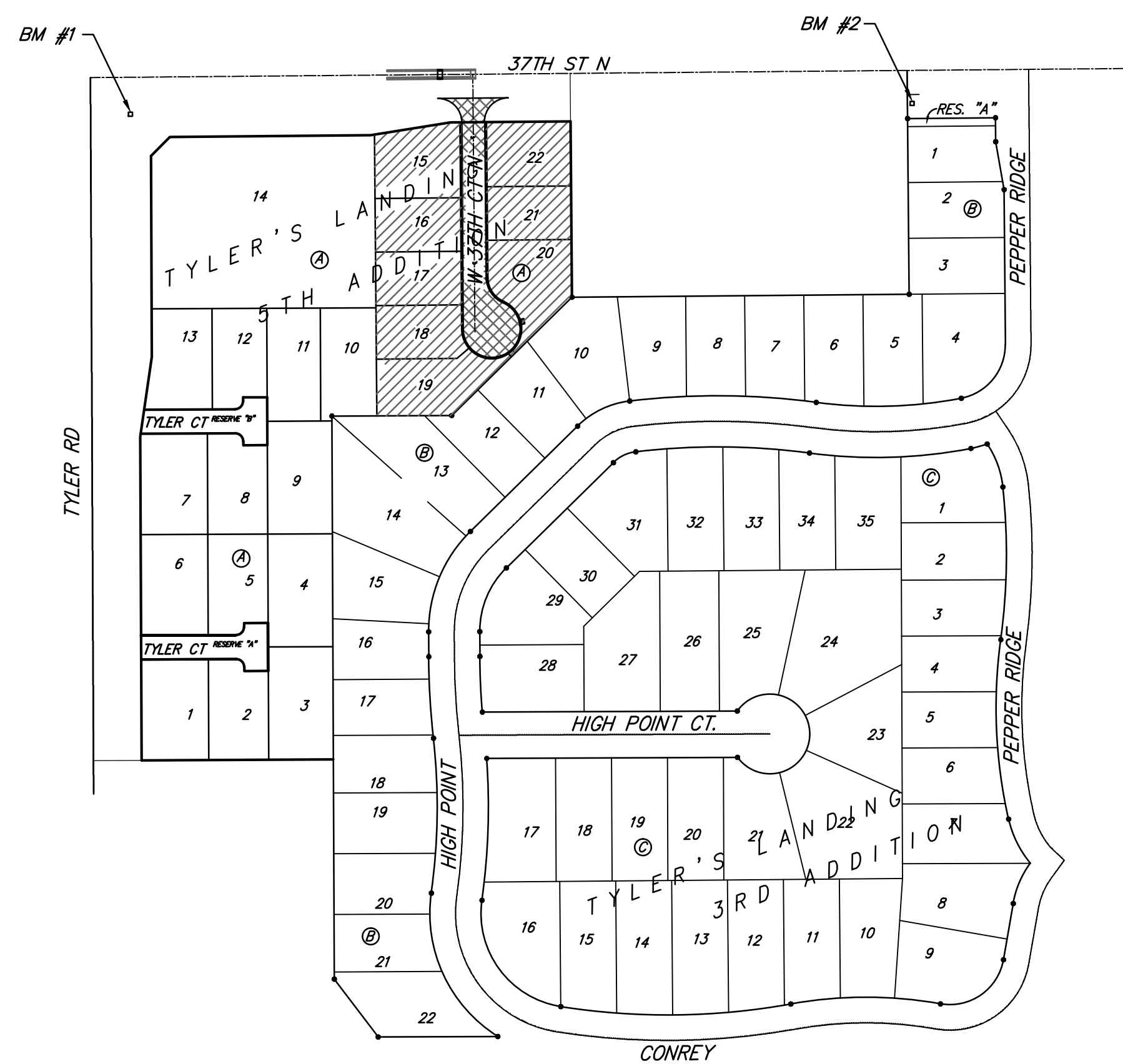
Benchmarks

BM #1: "□" Cut with Cross in Curb
Return at Southeast Corner of
Intersection of 37th St. N. and Tyler,
Approximately 47' South and 49.5' East
of the Center of the Intersection.
Elevation = 1343.53 (NAVD 88)

BM #2: "□" Cut with Cross in South
Curb Line of 37th St. N. Approximately
41.5' South and 1,026' East of the
Center of the Intersection of 37th St.
N. and Tyler.
Elevation = 1337.39 (NAVD 88)

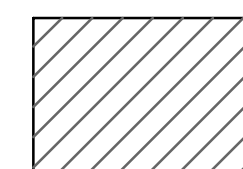
Sheet Index

Title Sheet	1
29' Pavement Detail	2
Curb & Gutter Detail	3
Sign Detail	4
Valley Gutter Detail	5
Pavement Underdrain Detail	6
37th Ct. N.	7
Erosion Control Plan	8
Mass Grading Detail	9
Mass Grading Plan	10
Coordinate Sheet	11
Erosion Control Details	12-16
Copy of Plat	17

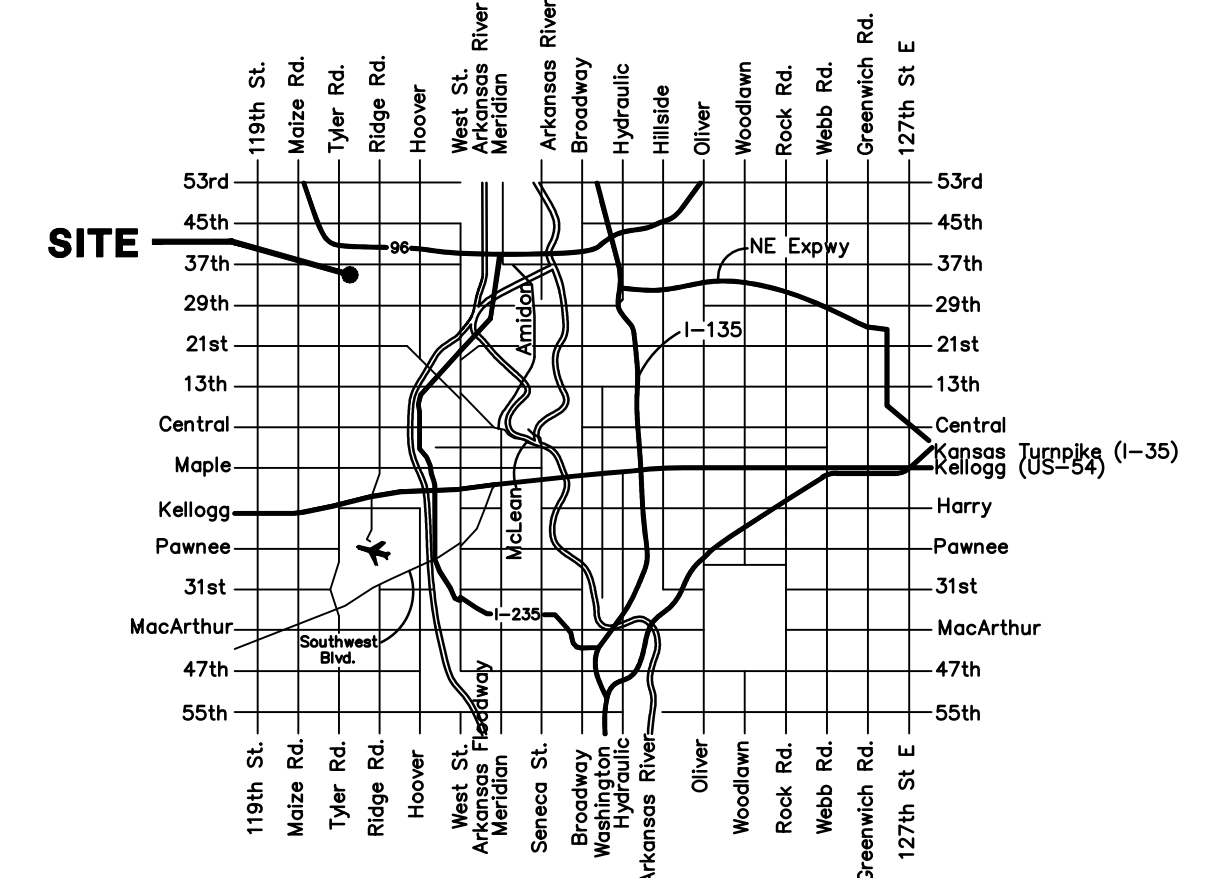
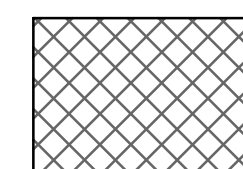


Scale: 1" = 150'

Benefit District:



Proposed Streets:



Vicinity Map



Baughman Company, P.A. 315 Ellis St. Wichita, KS 67211 P 316-262-7271 F 316-262-0149
ENGINEERING | SURVEYING | PLANNING | LANDSCAPE ARCHITECTURE