

Benchmarks:
 BM #1: "□" Cut with Cross in Curb
 Return at Southeast Corner of
 Intersection of 37th St. N. and Tyler,
 Approximately 47' South and 49.5' East
 of the Center of the Intersection.
 Elevation = 1343.53 (NAVD 88)

BM #2: "□" Cut with Cross in South
 Curb Line of 37th St. N. Approximately
 41.5' South and 1,026' East of the
 Center of the Intersection of 37th St.
 N. and Tyler.
 Elevation = 1337.39 (NAVD 88)

P.V.I.
 Elev = 1342.90
 No V.C.

P.V.I.
 Elev = 1343.50
 56.32' VC

P.V.I.
 Elev. = 1341.50
 30' V.C.

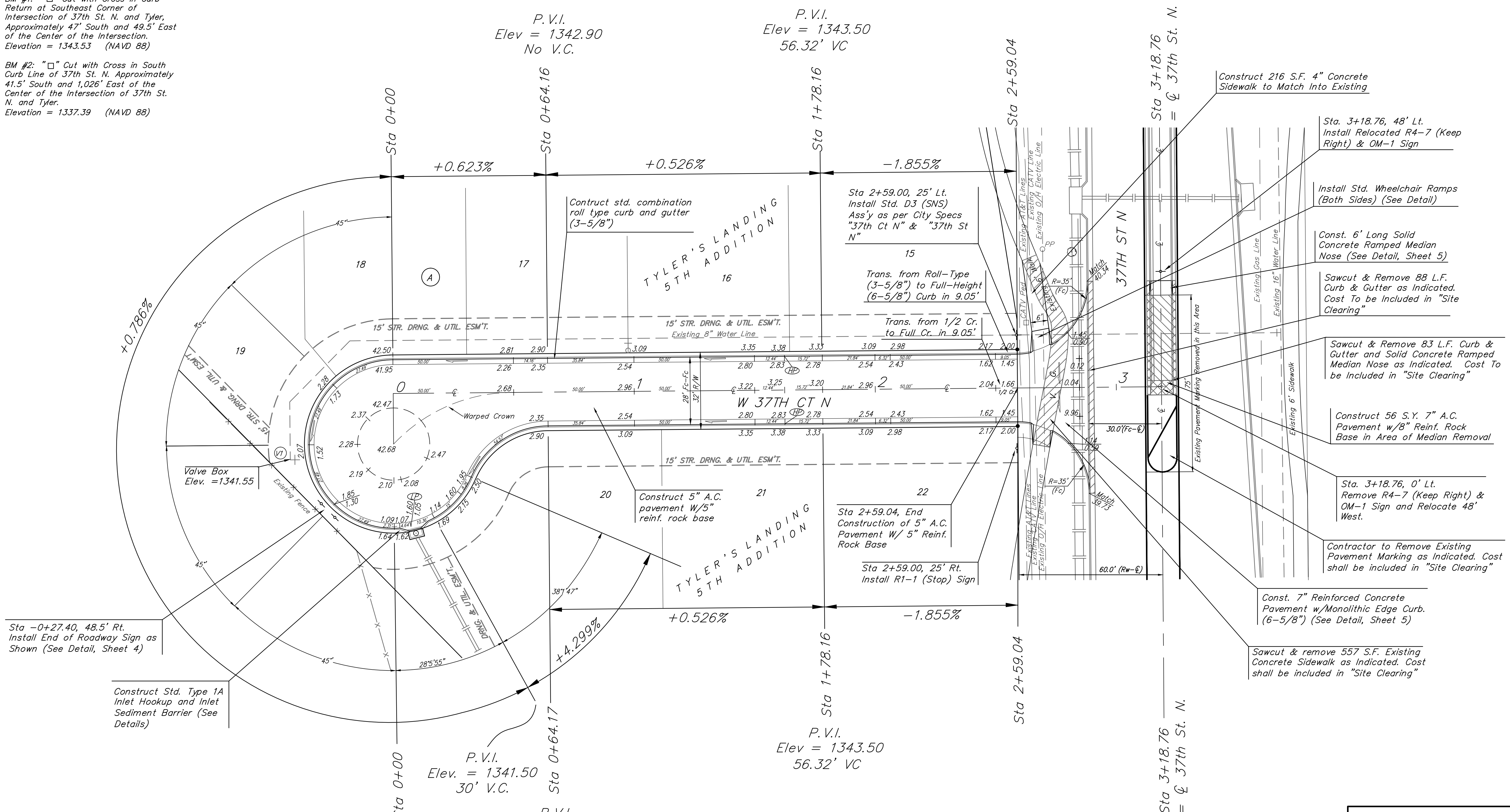
P.V.I.
 Elev = 1342.90
 No V.C.

Subdivision Bench Marks

Street & Station	Location Description	Elevation
W 37th Ct N 0+97.65, 14.25' Lt.	Adjacent to Fire Hydrant at SE Corner of Lot 16, Block A	

VALVE NUMBER	BASELINE STATION	OFFSET DISTANCE	OFFSET DIRECTION
1	-0+42.94	27.25'	Rt.
2	0+97.60	22.00'	Lt.

Paving contractor will be responsible to operate all water valves on the project, in the presence of the inspector, to ensure accessibility to the valves, and that all valves are left in the "ON" position when the project is completed.



NOTE: ROLL TYPE CURB & GUTTER TO BE CONSTRUCTED ON THE PAVEMENT SHOWN ON THIS SHEET. TOP OF CURB ELEVATIONS ARE GIVEN FOR FULL HEIGHT CURB.



Baughman		Tyler's Landing 5th Addition W. 37th Ct. N. STA 0+00 TO STA 2+59.03	
Baughman Company, P.A. 315 Ellis St. Wichita, KS 67211 P 786-262-2221 F 786-262-0149 ENGINEERING SURVEYING PLANNING LANDSCAPE ARCHITECTURE			
PROJECT NUMBER 472	DESIGN AEG/DMV	DRAWN JF	APPROVED DATE 03/15
REVISIONS:	SCALE Noted	SHEET 7 OF 17	
E:\eng\Tyler's Landing 5th Addition\STR\str1.dwg		08-05-E125	