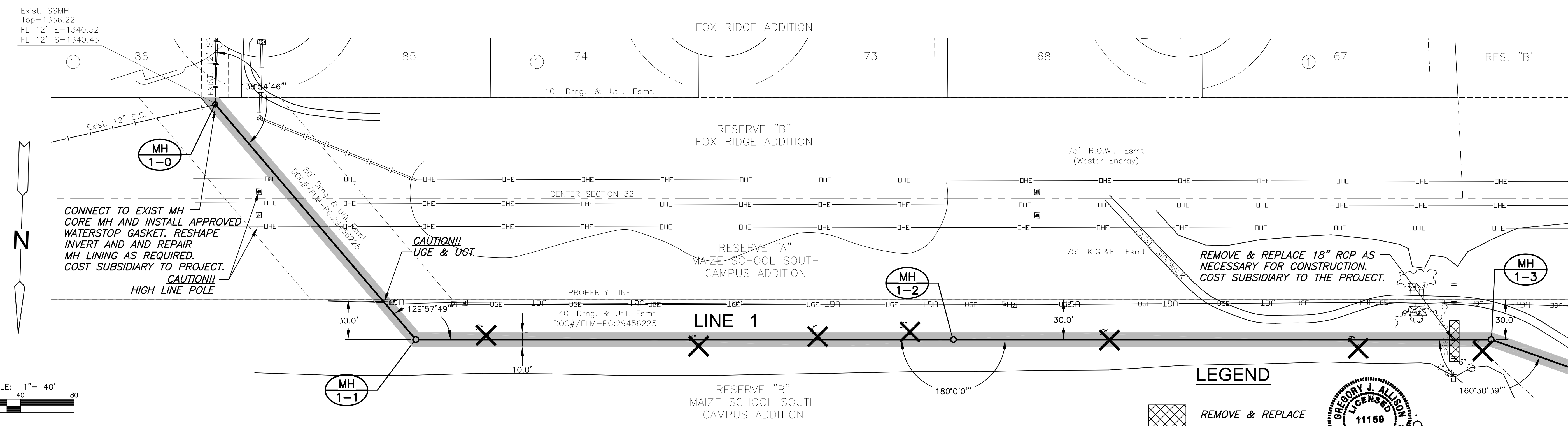





©2015 MKEC Engineering All Rights Reserved
 www.mkec.com
 These drawings and their contents, including, but not limited to, all concepts, designs, & ideas are the exclusive property of MKEC Engineering (MKEC), and may not be used or reproduced in any way without the express consent of MKEC.

LINE 1		
PROJECT NO.	468-84951	
DATE	DEC. 2014	
SCALE	AS SHOWN	
DESIGNED	DRAWN	CHECKED
DFL	KKL	GJA
NO.	REVISION	DATE
SHEET NO.		
5 OF 16		

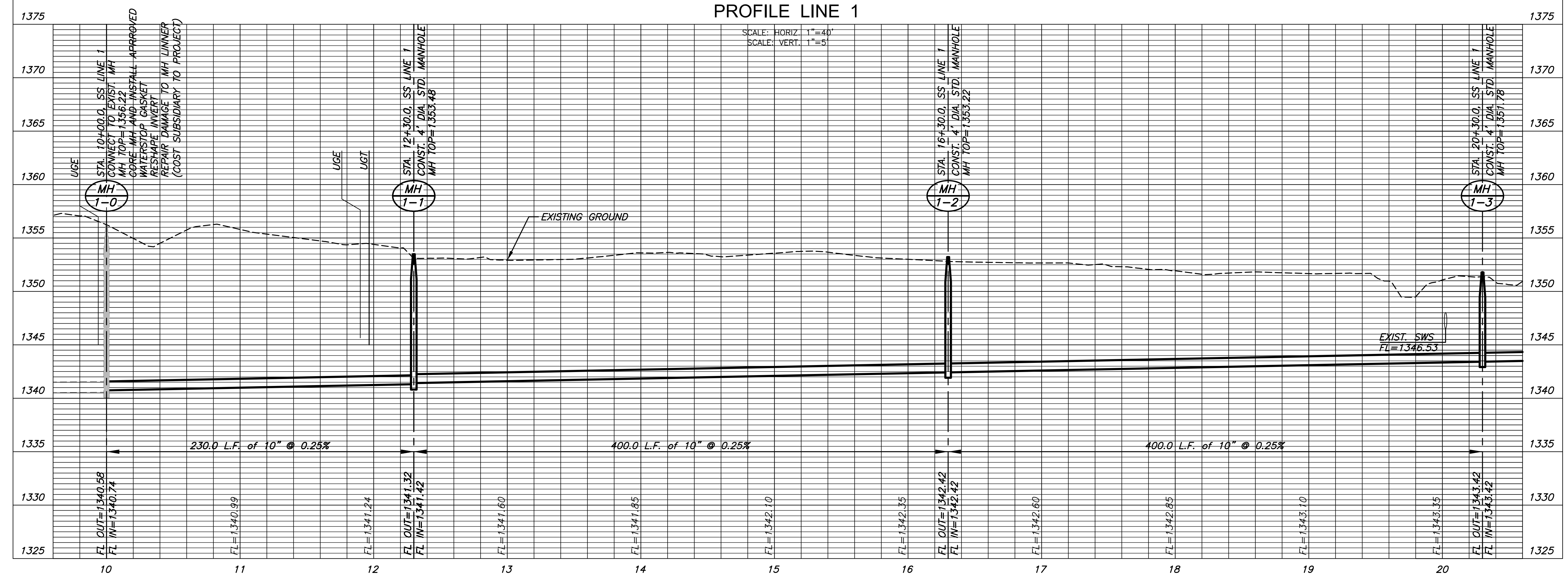


LEGEND

-  REMOVE & REPLACE
-  TOPSOIL STRIPPED & REPLACED
-  TREE REMOVAL



PLAN LINE 1
PROFILE LINE 1



PLOTTED: Wednesday, February 18, 2015 @ 09:23AM

Exist. SSMH
 Top=1356.22
 FL 12" E=1340.52
 FL 12" S=1340.45

CONNECT TO EXIST MH
 CORE MH AND INSTALL APPROVED
 WATERSTOP GASKET. RESHAPE
 INVERT AND AND REPAIR
 MH LINING AS REQUIRED.
 COST SUBSIDIARY TO PROJECT.
 CAUTION!!
 HIGH LINE POLE

REMOVE & REPLACE 18" RCP AS
 NECESSARY FOR CONSTRUCTION.
 COST SUBSIDIARY TO THE PROJECT.

- NOTE:**
- CONTRACTOR TO VERIFY THE DEPTH AND LOCATION OF EXISTING UTILITIES PRIOR TO CONSTRUCTION.
 - COST OF REMOVAL & REPLACEMENT ITEMS SHALL BE SUBSIDIARY TO SITE RESTORATION.

J:\PROJECTS\2011\1010577 PREMIER FOX RIDGE PLAZA\AS-CIVIL\CAD\ASANT157Z_B1.DWG