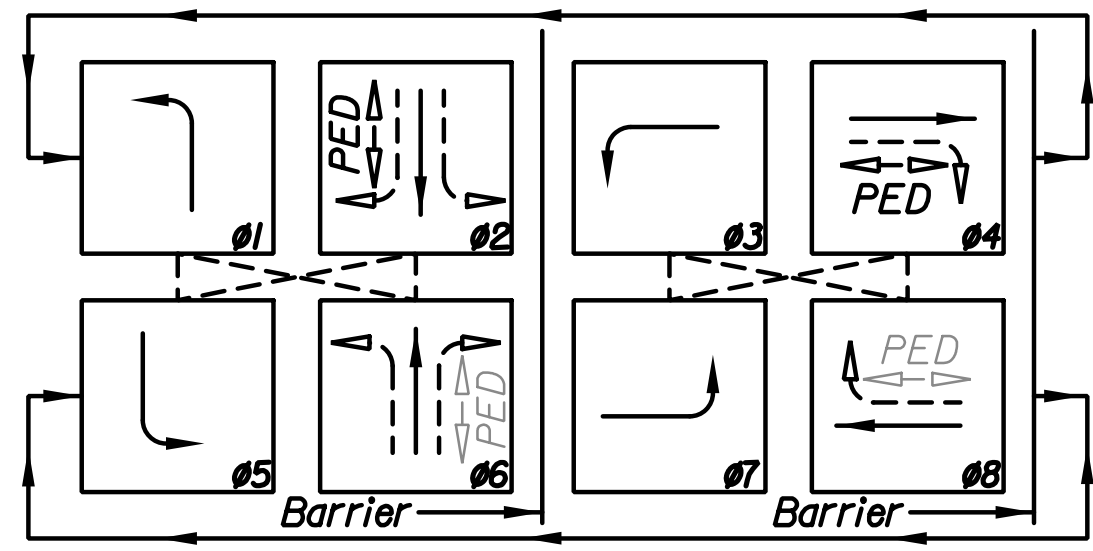


**PHASE DIAGRAM**

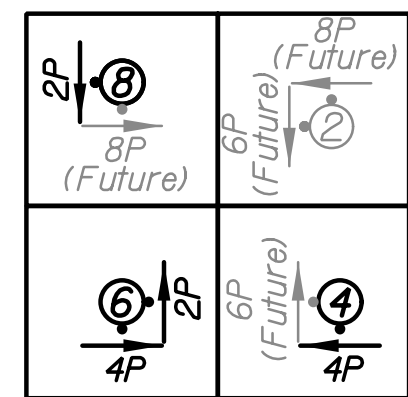


**MOVEMENTS**

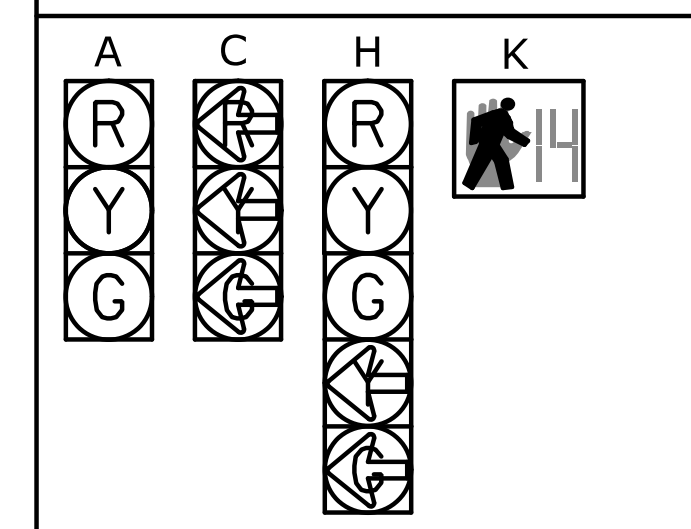
- ← Protected Phase
- Permitted Phase

**NOTE:**  
 DOTTED LINES CONNECTING PHASES DENOTE NON-CONFLICTING SIGNAL PHASES THAT CAN OCCUR CONCURRENTLY.  
 PEDESTRIAN INTERVALS TO OCCUR ONLY AFTER PUSHBUTTON ACTIVATION.  
 PEDESTRIAN MOVEMENTS FOR PHASE 6 AND 8 WILL BE ADDED IN THE FUTURE.

**Pedestrian Push Button Location and Designation**



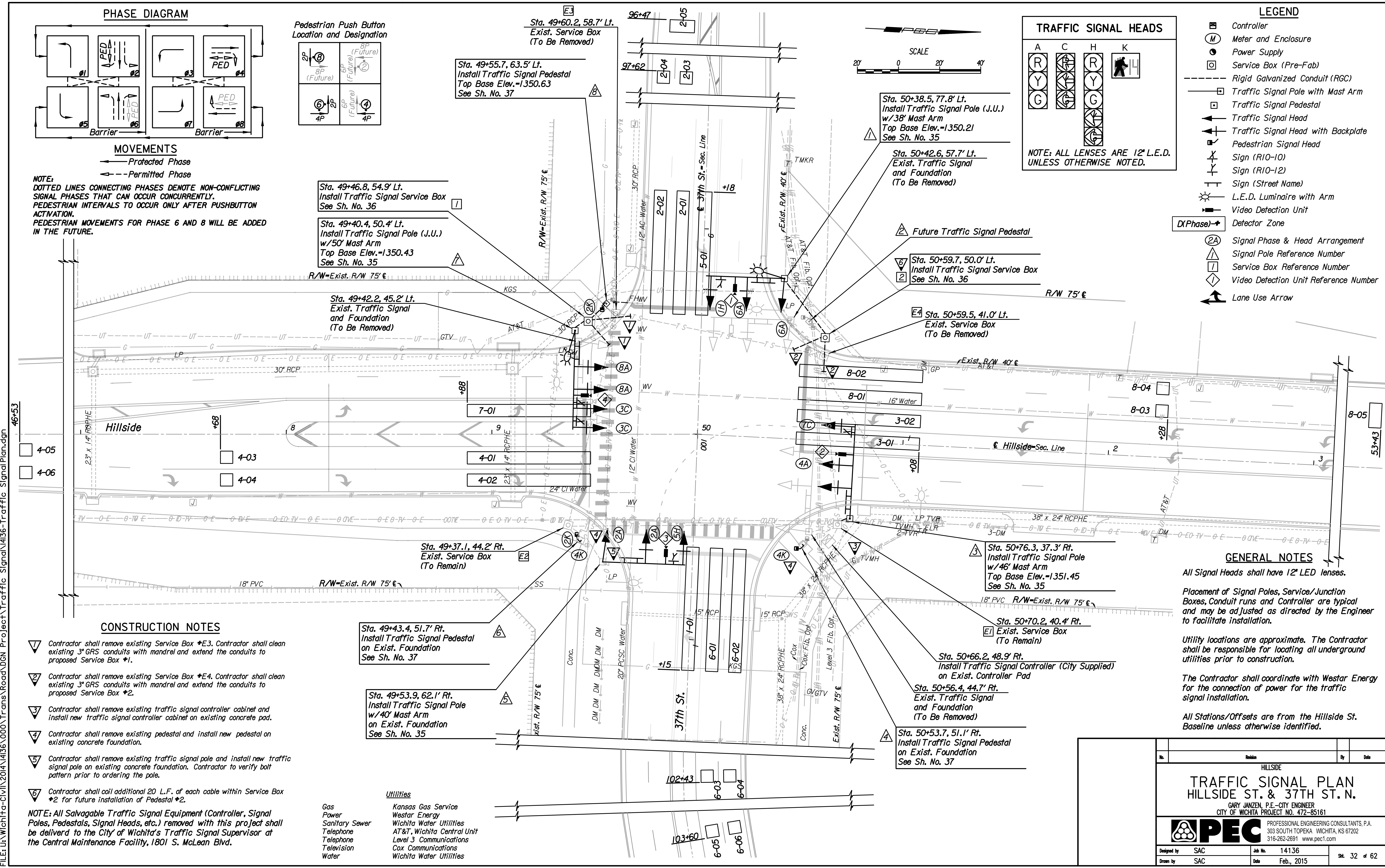
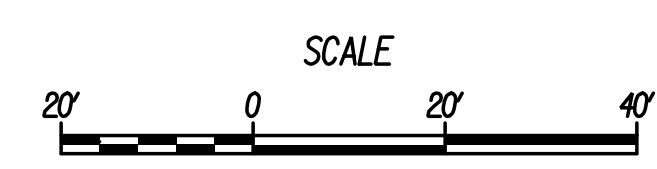
**TRAFFIC SIGNAL HEADS**



**NOTE: ALL LENSES ARE 12" L.E.D. UNLESS OTHERWISE NOTED.**

**LEGEND**

- ☐ Controller
- ⊙ Meter and Enclosure
- ⊙ Power Supply
- ☐ Service Box (Pre-Fab)
- Rigid Galvanized Conduit (RGC)
- ⊠ Traffic Signal Pole with Mast Arm
- ⊠ Traffic Signal Pedestal
- ⬆ Traffic Signal Head
- ⬆ Traffic Signal Head with Backplate
- ⬆ Pedestrian Signal Head
- ⬆ Sign (R10-10)
- ⬆ Sign (R10-12)
- ⬆ Sign (Street Name)
- ☀ L.E.D. Luminaire with Arm
- ⬆ Video Detection Unit
- ⊠ D(Phase) → Detector Zone
- ⊙ 2A Signal Phase & Head Arrangement
- ⊠ Signal Pole Reference Number
- ⊠ Service Box Reference Number
- ⊠ Video Detection Unit Reference Number
- ⬆ Lane Use Arrow



**CONSTRUCTION NOTES**

- 1 Contractor shall remove existing Service Box #E3. Contractor shall clean existing 3" GRS conduits with mandrel and extend the conduits to proposed Service Box #1.
- 2 Contractor shall remove existing Service Box #E4. Contractor shall clean existing 3" GRS conduits with mandrel and extend the conduits to proposed Service Box #2.
- 3 Contractor shall remove existing traffic signal controller cabinet and install new traffic signal controller cabinet on existing concrete pad.
- 4 Contractor shall remove existing pedestal and install new pedestal on existing concrete foundation.
- 5 Contractor shall remove existing traffic signal pole and install new traffic signal pole on existing concrete foundation. Contractor to verify bolt pattern prior to ordering the pole.
- 6 Contractor shall coil additional 20 L.F. of each cable within Service Box #2 for future installation of Pedestal #2.

**NOTE: All Salvagable Traffic Signal Equipment (Controller, Signal Poles, Pedestals, Signal Heads, etc.) removed with this project shall be delivered to the City of Wichita's Traffic Signal Supervisor at the Central Maintenance Facility, 1801 S. McLean Blvd.**

Sta. 49+37.1, 44.2' Rt.  
 Exist. Service Box (To Remain)

Sta. 49+43.4, 51.7' Rt.  
 Install Traffic Signal Pedestal on Exist. Foundation  
 See Sh. No. 37

Sta. 49+53.9, 62.1' Rt.  
 Install Traffic Signal Pole w/40' Mast Arm on Exist. Foundation  
 See Sh. No. 35

- Utilities**
- Gas Kansas Gas Service
  - Power Westar Energy
  - Sanitary Sewer Wichita Water Utilities
  - Telephone AT&T, Wichita Central Unit
  - Telephone Level 3 Communications
  - Television Cox Communications
  - Water Wichita Water Utilities

**GENERAL NOTES**

- All Signal Heads shall have 12" LED lenses.
- Placement of Signal Poles, Service/Junction Boxes, Conduit runs and Controller are typical and may be adjusted as directed by the Engineer to facilitate installation.
- Utility locations are approximate. The Contractor shall be responsible for locating all underground utilities prior to construction.
- The Contractor shall coordinate with Westar Energy for the connection of power for the traffic signal installation.
- All Stations/Offsets are from the Hillside St. Baseline unless otherwise identified.

Revision		By		Date	
HILLSIDE					
<b>TRAFFIC SIGNAL PLAN</b>					
<b>HILLSIDE ST. &amp; 37TH ST. N.</b>					
GARY JANZEN, P.E.—CITY ENGINEER CITY OF WICHITA PROJECT NO. 472-85161					
<b>PEC</b> PROFESSIONAL ENGINEERING CONSULTANTS, P.A. 303 SOUTH TOPEKA WICHITA, KS 67202 316-262-2691 www.pec1.com					
Designed by	SAC	Job No.	14136		
Drawn by	SAC	Date	Feb., 2015	Sht. 32 of 62	

Plotted By: svb Date: 2/24/2015 3:23:03 PM  
 FILE: U:\Wichita-Civil\2014\14136\000\Trans\Road\DN Project\Traffic Signal\14136-Traffic Signal Plan.dgn