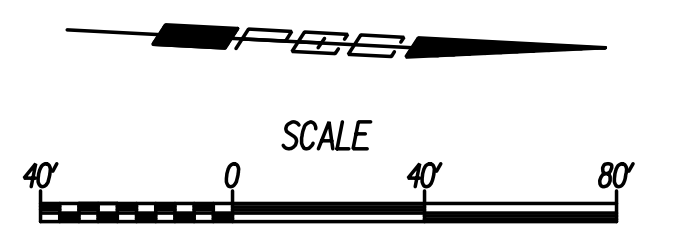
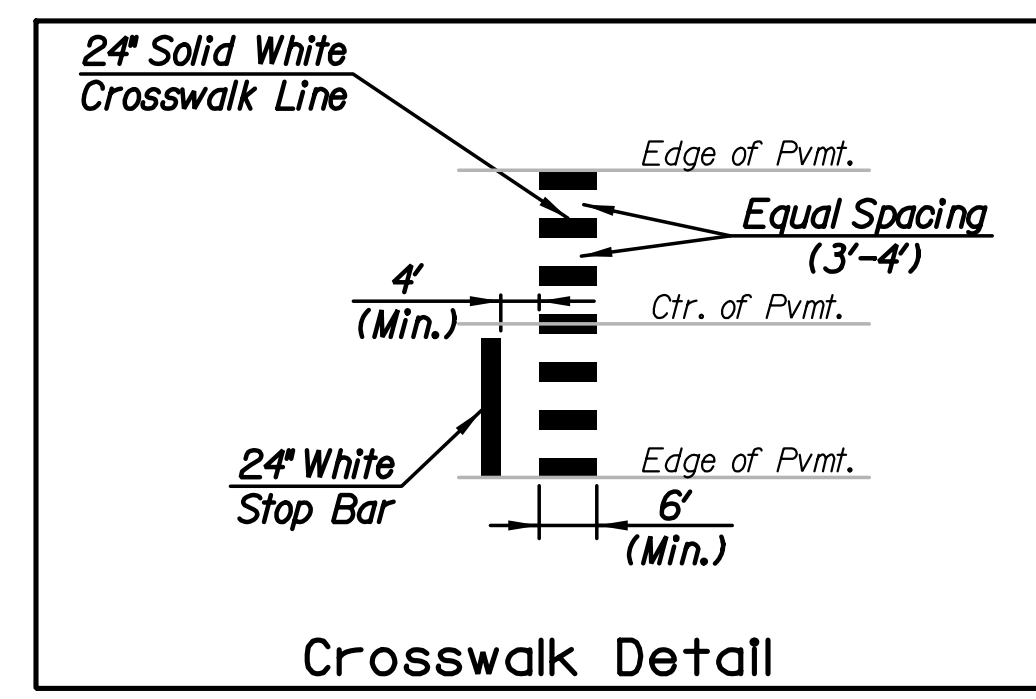
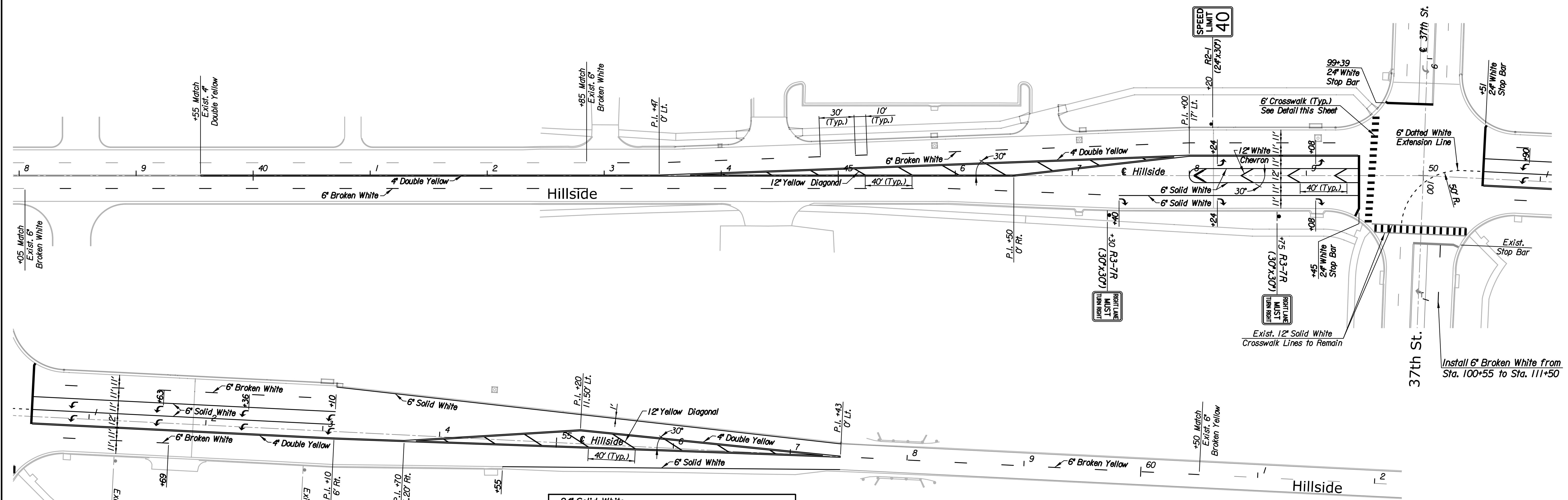


SUMMARY OF PAVEMENT MARKINGS												
LOCATION	6" Broken White Lane Line (ft)	6" Solid White Lane Line (ft)	6" Solid White Edge Line (ft)	6" Dotted White Extension Line (ft)	12" Solid White Chevron Line (ft)	24" Solid White Crosswalk Line (ft)	24" Solid White Stop Line (ft)	4" Solid Yellow Double Line (ft)	6" Broken Yellow Line (ft)	12" Solid Yellow Diagonal Line (ft)	Left Turn Arrows (each)	Right Turn Arrows (each)
Hillside Sta. 43+00 to Sta. 59+00	620	1015	722	38	110	192	148	4886	150	245	10	3
37th St. Sta. 100+55 to Sta. 111+50	550											
Totals	1170	1015	722	38	110	192	148	4886	150	245	10	3



Plotted By: svb Date: 2/20/2015 9:49:11 AM
 FILE: U:\Wichita\Civil\2014\136\000\Trans\Road\DN Project\Signing and Marking\14136-Hillside Marking Plan.dgn



No.	Revision	By	Date
HILLSIDE			
SIGNING & MARKING PLAN			
STA. 38+00 TO STA. 62+00			
GARY JANZEN, P.E.-CITY ENGINEER CITY OF WICHITA PROJECT NO. 472-85161			
PEC PROFESSIONAL ENGINEERING CONSULTANTS, P.A. 303 SOUTH TOPEKA WICHITA, KS 67202 316-262-2691 www.pec1.com			
Designed by	JPS	Job No.	14136
Drawn by	SVB	Date	Feb., 2015
			Sh. 38 of 62