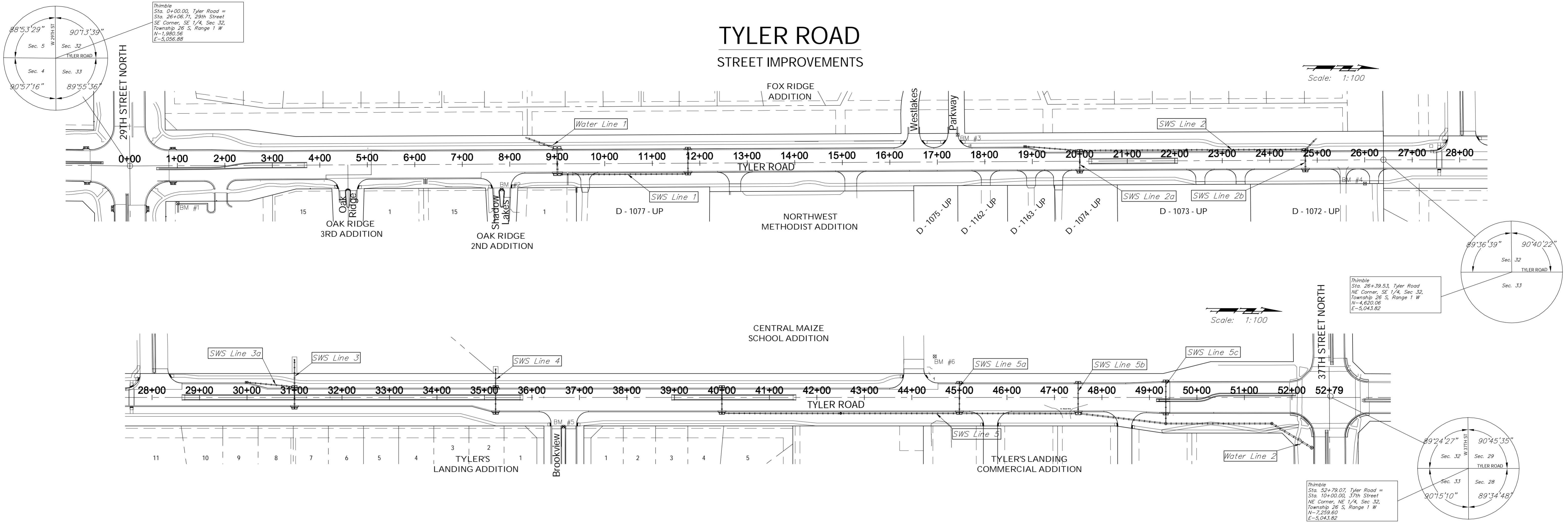


# TYLER ROAD STREET IMPROVEMENTS



## BENCHMARKS:

- |  |   |
|--|---|
| <p>BM #1 - "□" Chiseled on Top of Curb at Southwest Corner of Parking Lot at the Northeast Corner of 29th and Tyler<br/>Sta. 1+00, 79' Rt.<br/>Elev. = 1364.07 (NGVD 29)</p> | <p>BM #2 - "□" Chiseled on Top of Curb at West End of Median in Shadow Lakes Interchange<br/>Sta. 7+83, 53' Rt.<br/>Elev. = 1363.41 (NGVD 29)</p>   |
| <p>BM #3 - "□" Chiseled on Top of Curb on West Side of Handicap Ramp at the North Side of Entrance to Fox Ridge<br/>Sta. 17+43, 57' Lt.<br/>Elev. = 1367.36 (NGVD 29)</p>    | <p>BM #4 - "T" Post Set at Fence Line Next to Brace Post South Side of Entrance to 3320 Tyler Rd<br/>Sta. 26+00, 50' Rt.<br/>Elev. = 1361.08 (NGVD 29)</p>                                |
| <p>BM #5 - "□" Chiseled on Top of Curb at West End of Median at Brookview Entrance<br/>Sta. 36+66, 62' Rt.<br/>Elev. = 1352.54 (NGVD 29)</p>                                 | <p>BM #6 - "T" Post Set Five Feet South of Maize South School Entrance Sign at the North Side of East Entrance<br/>Sta. 44+48, 86' Lt.<br/>Elev. = 1344.89 (NGVD 29)</p>                  |
| <p>BM #7 - "□" Chiseled on Top of Curb at West Side of North End of Median<br/>225' North of 37th and Tyler Intersection.<br/>Elev. = 1340.74 (NGVD 29)</p>                  | <p>BM #8 - "□" Chiseled on Top of South End of RCP on East Side of Tyler Between R.R. Tracks and K-96<br/>2000' North of Intersection of 37th and Tyler<br/>Elev. = 1340.74 (NGVD 29)</p> |

Drawing File: E:\eng\Tyler\29th to 37th\Land\dwg\Tyler Base.dwg [KeySheet]

Design: TPV  
Drawn: STAFF  
Approved: TPV  
Scale: 1" = 100'

Project No. 0802E057 CAPITAL IMPROVEMENT PROJECT

### PROJECT KEYSHEET

TYLER ROAD - 29TH STREET NORTH to 37TH STREET NORTH

**Baughman Company, P.A.**  
315 Ellis St., Wichita, KS 67211 P 316.262.7271 F 316.262.0149  
ENGINEERING | SURVEYING | PLANNING | LANDSCAPE ARCHITECTURE