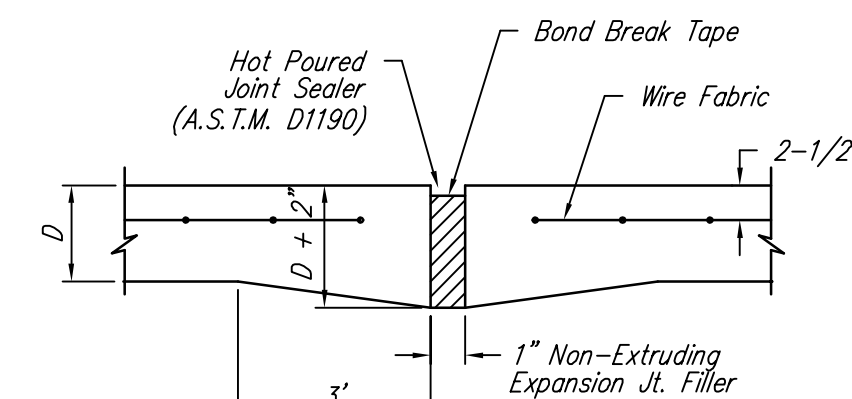
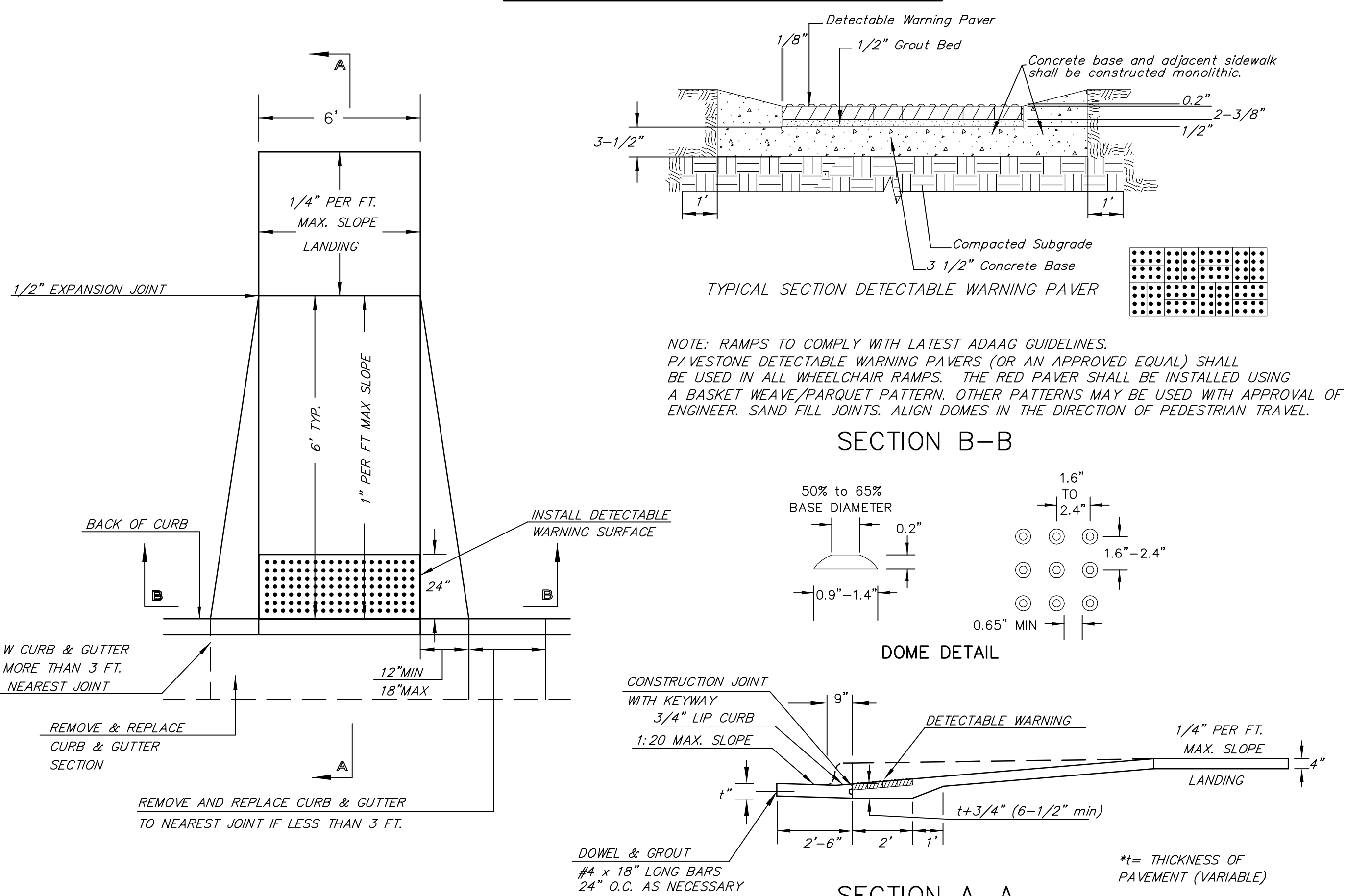


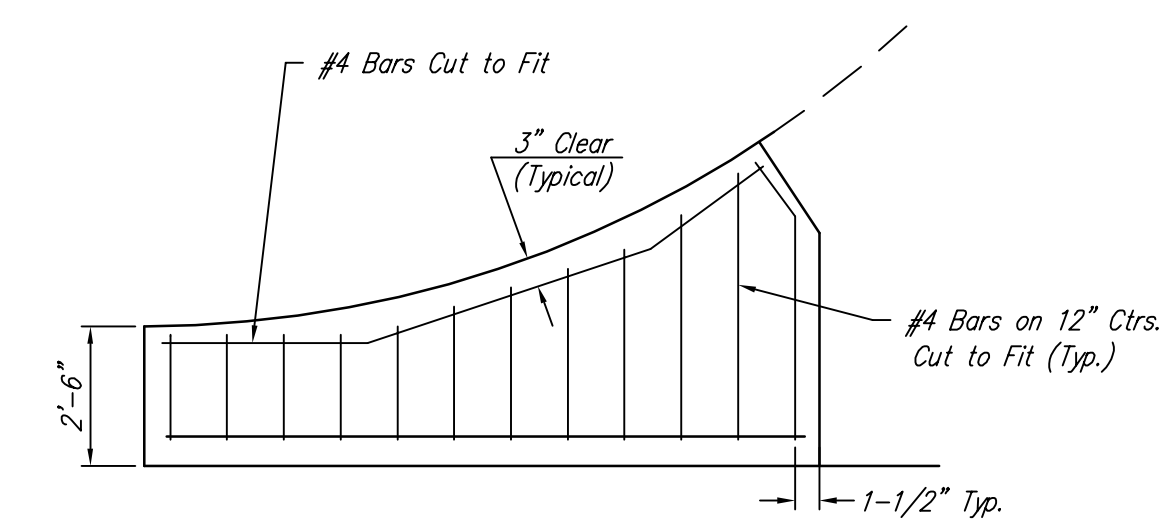
TYLER ROAD TYPICAL SECTION
Sta. 49+21.50 to Sta. 49+42.97

**(TYPE A)
STANDARD WHEELCHAIR RAMP WITH
DETECTABLE WARNING
CONSTRUCTION DETAIL FOR STREETS
WITH COMBINED CURB & GUTTER**

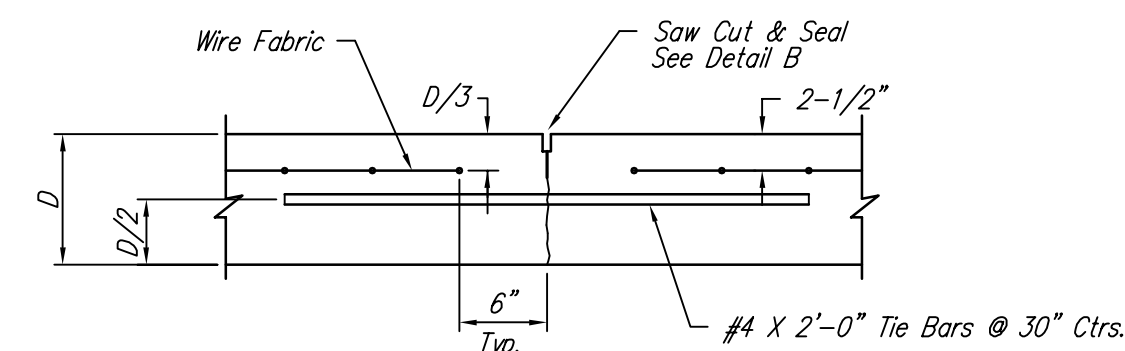


EXPANSION JOINT

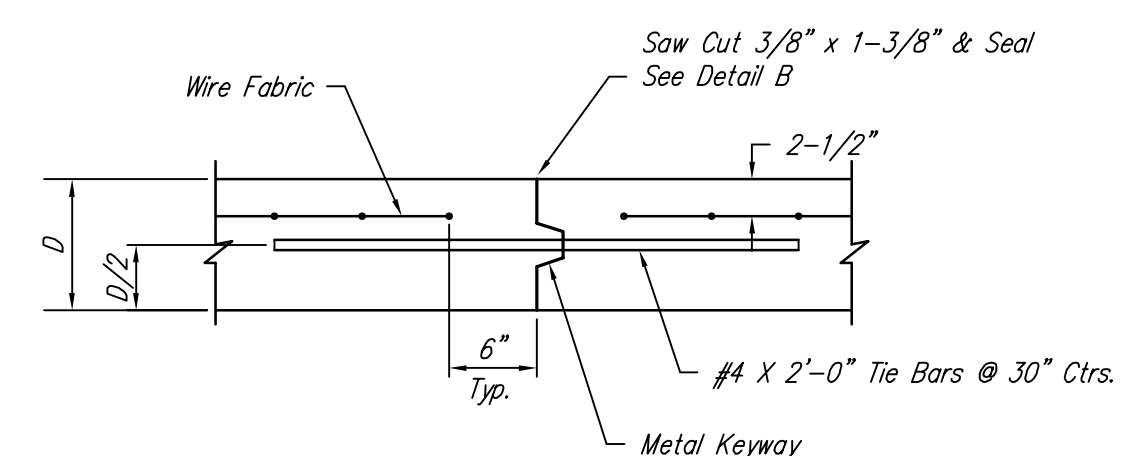
NOTE: Extra Thickness to be Subsidiary to Price of Square Yards Pavement



WING REINFORCING DETAIL

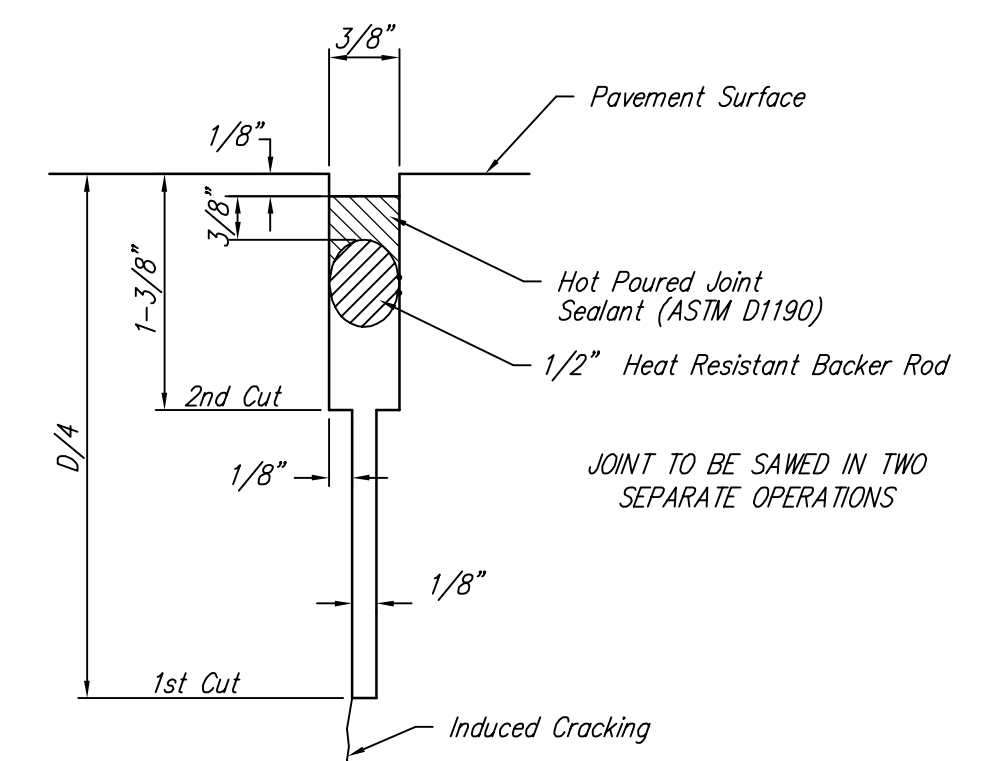


LONGITUDINAL JOINT DETAIL (L.J.)

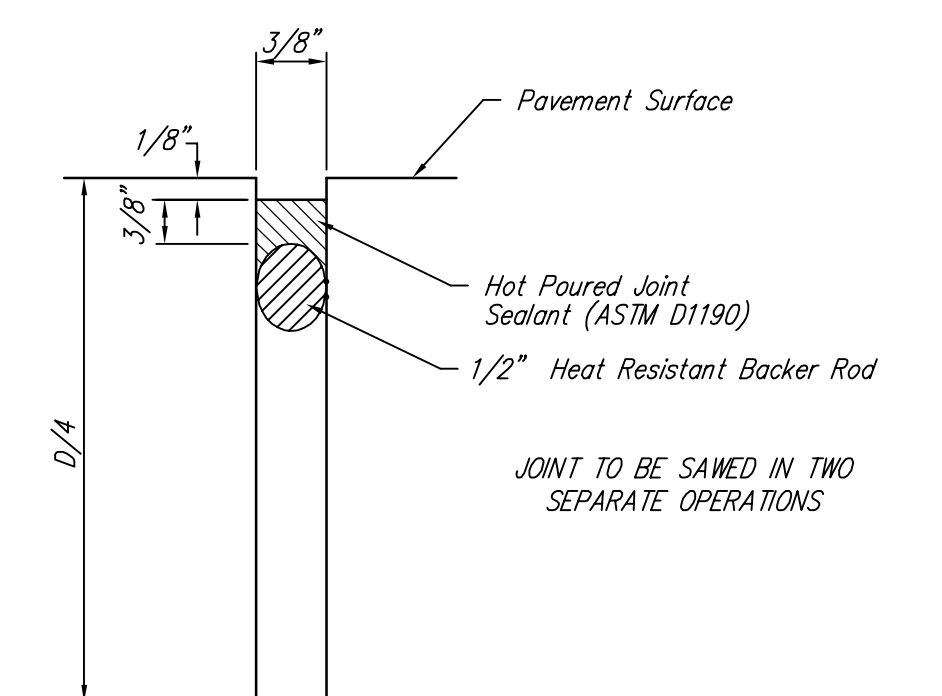


**OPTIONAL LONGITUDINAL JOINT DETAIL (L.J.)
(CONSTRUCTION JOINT)**

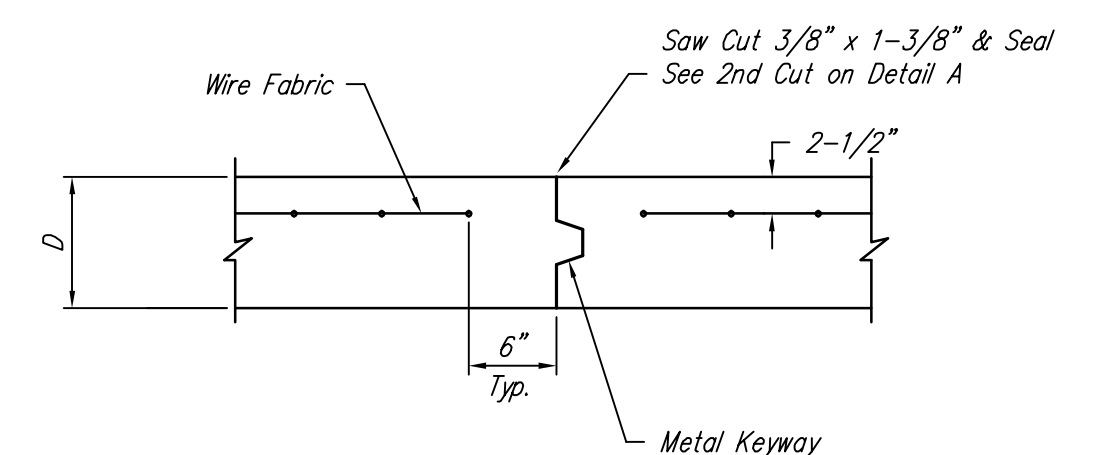
NOTE: 6" X 12" W4XW4 Wire Fabric Reinforcing Shall Be Placed So That The Wires With The 6" Spacing Will Run Parallel With The Longitudinal Joints.



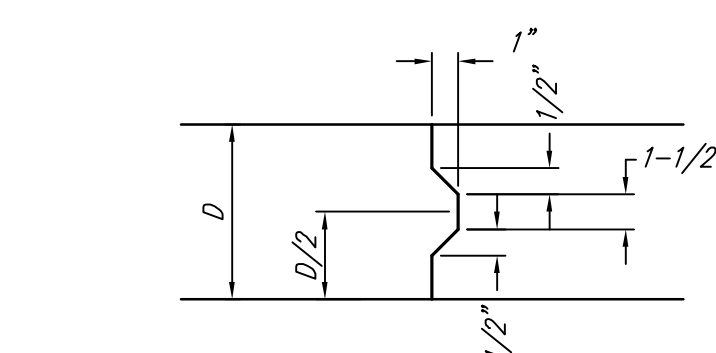
SAW JOINT DETAIL "A"



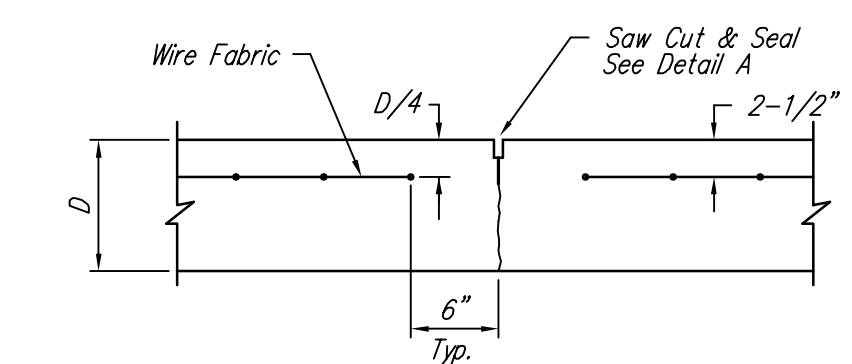
SAW JOINT DETAIL "B"



**OPTIONAL CONTRACTION JOINT
(CONSTRUCTION JOINT)**



KEYWAY DETAIL



CONTRACTION JOINT DETAIL (C.J.)

Drawing File: E:\Project\Tyler - 29th to 37th\Details\Paedtl 1.dwg

Design: Staff
Drawn: Staff
Approved: TPV
Scale: NOTED

Project No. 0802E057

CAPITAL IMPROVEMENT PROJECT

**TYPICAL SECTION &
PAVEMENT DETAILS**

TYLER ROAD - 29TH STREET NORTH TO 37TH STREET NORTH

Baughman Company, P.A.
315 Ellis St., Wichita, KS 67211 P 316.262.7271 F 316.262.0149
ENGINEERING | SURVEYING | PLANNING | LANDSCAPE ARCHITECTURE

March 2015
SHEET
OF
7
95

AUGUST 4, 2003