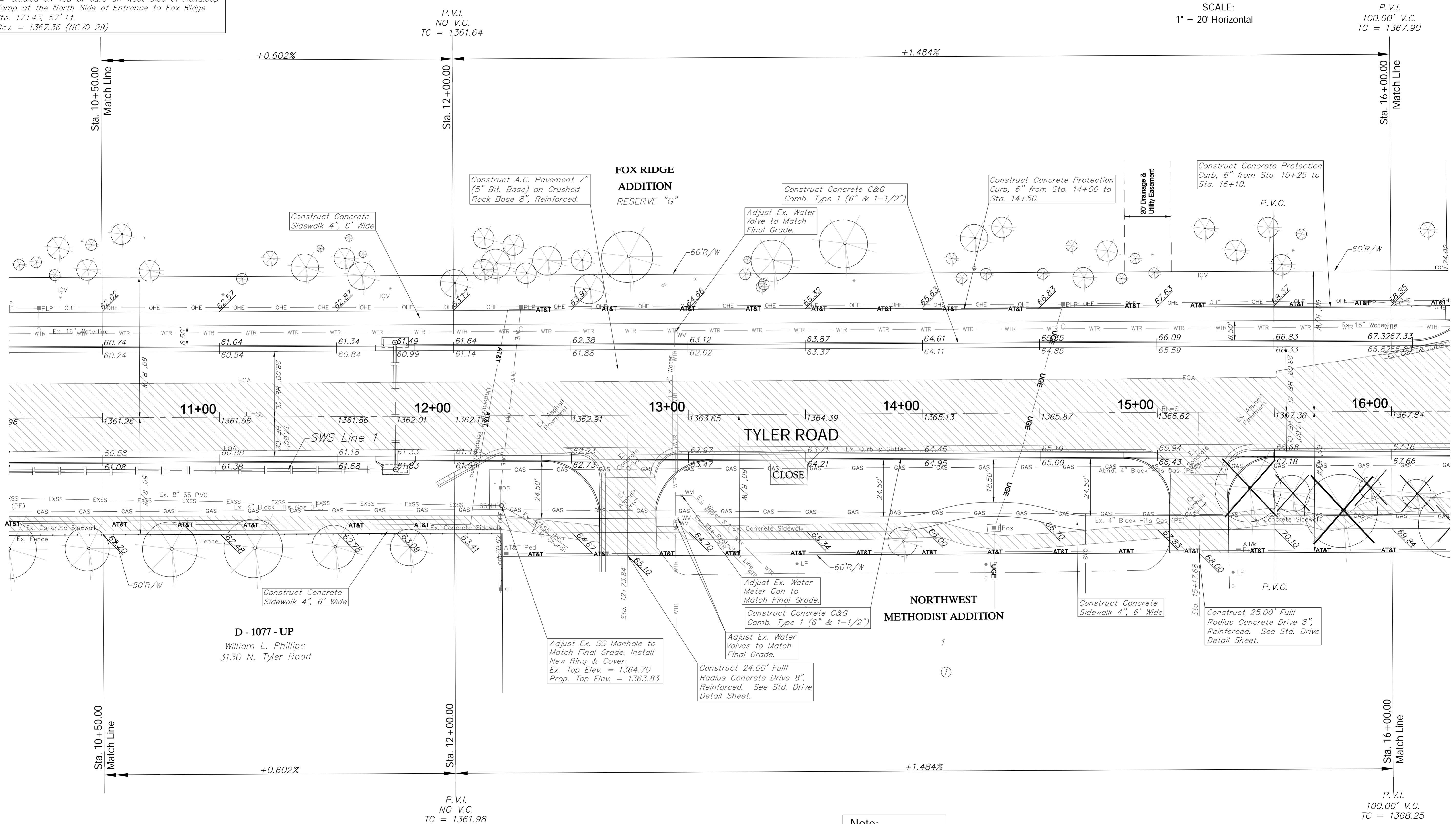
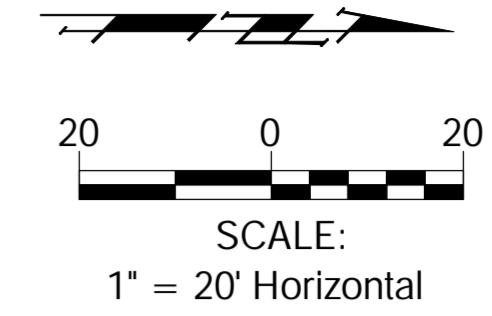


BENCHMARKS:

BM #2 - "C" Chiseled on Top of Curb at West End of Median in Shadow Lakes Interchange
Sta. 7+83, 53' Rt.
Elev. = 1363.41 (NGVD 29)

BM #3 - "C" Chiseled on Top of Curb on West Side of Handicap Ramp at the North Side of Entrance to Fox Ridge
Sta. 17+43, 57' Lt.
Elev. = 1367.36 (NGVD 29)



D - 1077 - UP
William L. Phillips
3130 N. Tyler Road

Adjust Ex. SS Manhole to Match Final Grade. Install New Ring & Cover.
Ex. Top Elev. = 1364.70
Prop. Top Elev. = 1363.83

Adjust Ex. Water Meter Can to Match Final Grade.
Construct Concrete C&G Comb. Type 1 (6" & 1-1/2")
Adjust Ex. Water Valves to Match Final Grade.
Construct 24.00' Full Radius Concrete Drive 8", Reinforced. See Std. Drive Detail Sheet.

Construct 25.00' Full Radius Concrete Drive 8", Reinforced. See Std. Drive Detail Sheet.

Note:
Pavement, Sidewalks, Etc. To Be Removed Are Indicated By:

Note:
Trees/Shrubs to be removed are marked thus:

Drawing File: E:\eng\Tyler29th to 37th\Land\dwg\Tyler Base.dwg (Pw03)
Project No. 0802E057 CAPITAL IMPROVEMENT PROJECT

Design: ENGINEER
Drawn: STAFF
Approved: ENGINEER
Scale: NOTED

TYLER ROAD PAVING
Sta. 10+50.00 to Sta. 16+00.00
TYLER ROAD - 29TH STREET NORTH to 37TH STREET NORTH

Baughman Company, P.A.
315 Ellis St., Wichita, KS 67211 P 316.262.7271 F 316.262.0149
ENGINEERING | SURVEYING | PLANNING | LANDSCAPE ARCHITECTURE