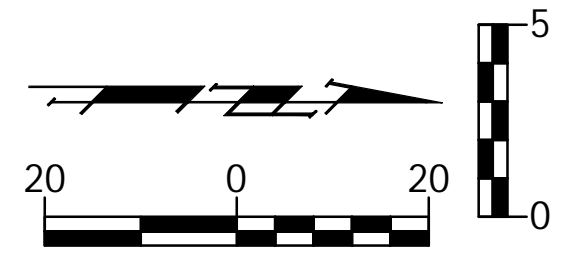
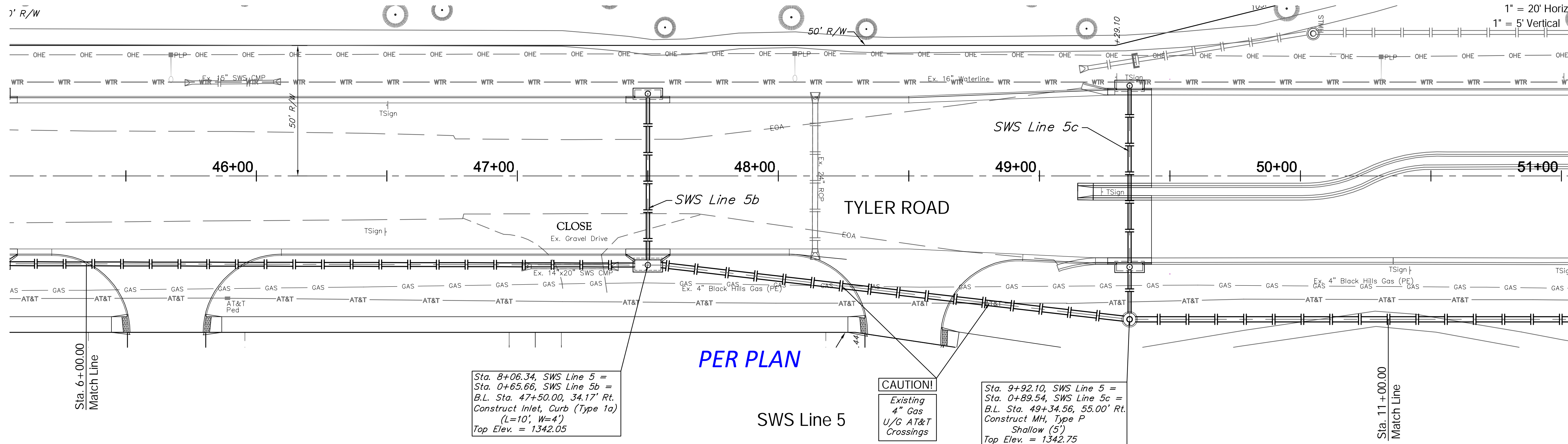


BENCHMARK:
 BM #6 - "T" Post Set Five Feet South of Maize South School Entrance Sign at the North Side of East Entrance Sta. 44+48, 86' Lt. Elev. = 1344.89 (NGVD 29)



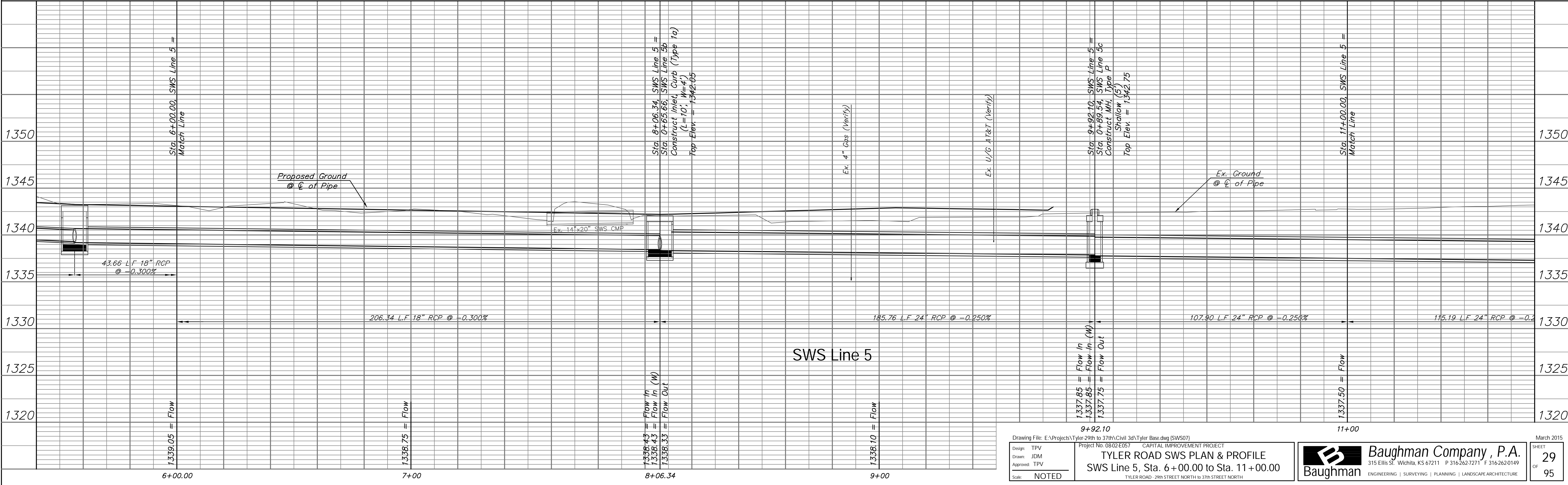
SCALE:
 1" = 20' Horizontal
 1" = 5' Vertical



Sta. 8+06.34, SWS Line 5 =
 Sta. 0+65.66, SWS Line 5b =
 B.L. Sta. 47+50.00, 34.17' Rt.
 Construct Inlet, Curb (Type 1a)
 (L=10', W=4')
 Top Elev. = 1342.05

CAUTION!
 Existing
 4" Gas
 U/G AT&T
 Crossings

Sta. 9+92.10, SWS Line 5 =
 Sta. 0+89.54, SWS Line 5c =
 B.L. Sta. 49+34.56, 55.00' Rt.
 Construct MH, Type P
 Shallow (5')
 Top Elev. = 1342.75



Sta. 8+06.34, SWS Line 5 =
 Sta. 0+65.66, SWS Line 5b
 Construct Inlet, Curb (Type 1a)
 (L=10', W=4')
 Top Elev. = 1342.05

Sta. 9+92.10, SWS Line 5 =
 Sta. 0+89.54, SWS Line 5c
 Construct MH, Type P
 Shallow (5')
 Top Elev. = 1342.75

Drawing File: E:\Projects\Tyler-29th to 37th\Civil 3d\Tyler Base.dwg (SWS07)
 Project No. 0802E057 CAPITAL IMPROVEMENT PROJECT
TYLER ROAD SWS PLAN & PROFILE
 SWS Line 5, Sta. 6+00.00 to Sta. 11+00.00
 Scale: NOTED

Baughman Company, P.A.
 315 Ellis St. Wichita, KS 67211 P 316.262.7271 F 316.262.0149
 ENGINEERING | SURVEYING | PLANNING | LANDSCAPE ARCHITECTURE

March 2015
 SHEET
29
 OF
95