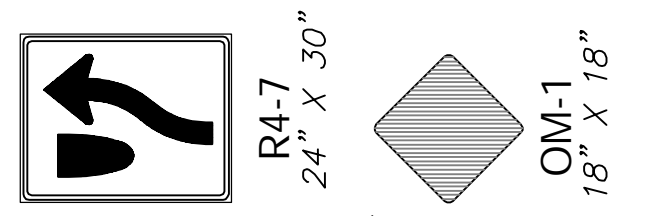


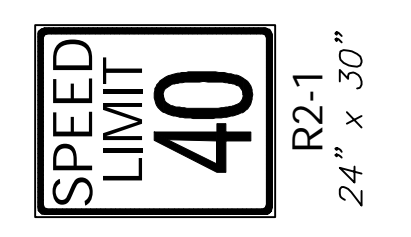
Sta. 21+50.00
Match Line



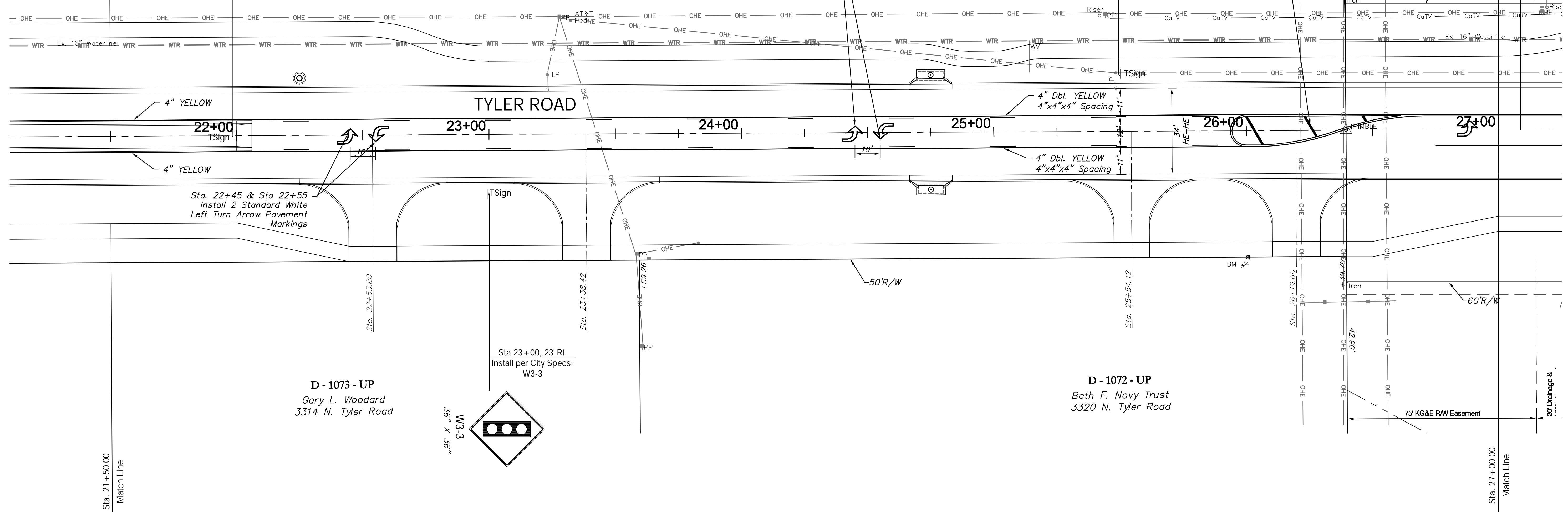
Sta 21+98, CL
Install per City Specs:
R4-7 (Sym)
OM-1 (Yellow)

**FOX RIDGE
ADDITION
RESERVE "B"**

Sta. 24+45 & Sta 24+55
Install 2 Standard White
Left Turn Arrow Pavement
Markings

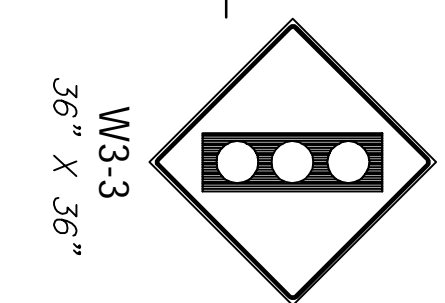


Sta 25+50, 23' Lt.
Relocate from Sta. 21+30, Lt.
Install per City Specs:
R2-1



Sta. 22+45 & Sta 22+55
Install 2 Standard White
Left Turn Arrow Pavement
Markings

D - 1073 - UP
Gary L. Woodard
3314 N. Tyler Road



Sta 23+00, 23' Rt.
Install per City Specs:
W3-3

D - 1072 - UP
Beth F. Novy Trust
3320 N. Tyler Road

Drawing File: E:\eng\Tyler29th to 37th\Land\tyler Base.dwg (Pav05)

Design: ENGINEER	Project No: 0802E057 CAPITAL IMPROVEMENT PROJECT
Drawn: STAFF	TYLER ROAD MARKING & SIGNING PLAN
Approved: ENGINEER	Sta. 21 + 50.00 to Sta. 27 + 00.00
Scale: NOTED	TYLER ROAD - 29TH STREET NORTH to 37TH STREET NORTH

Baughman Company, P.A.
315 Ellis St., Wichita, KS 67211 P 316.262.7271 F 316.262.0149
ENGINEERING | SURVEYING | PLANNING | LANDSCAPE ARCHITECTURE