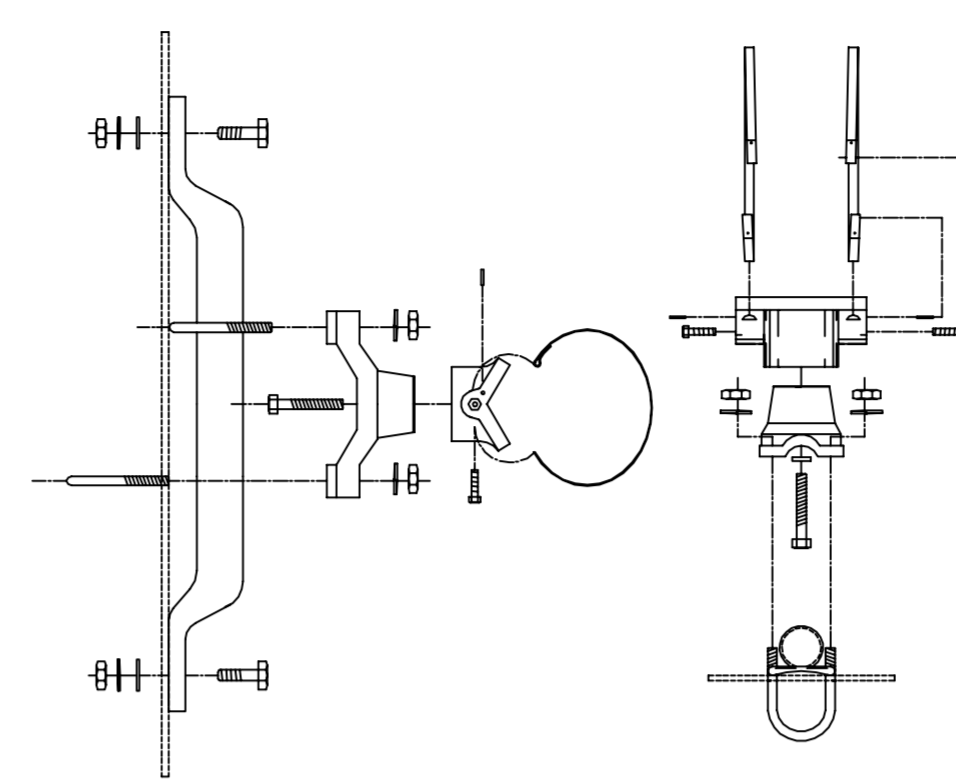
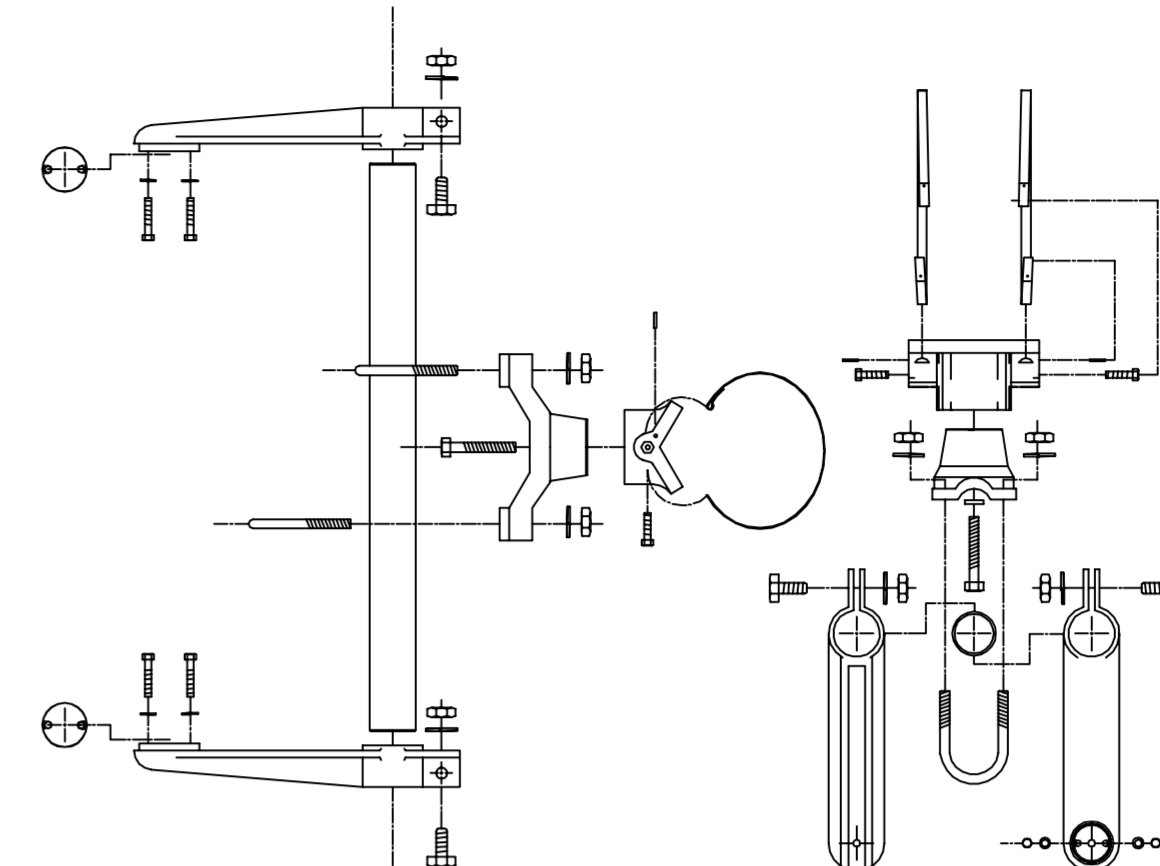


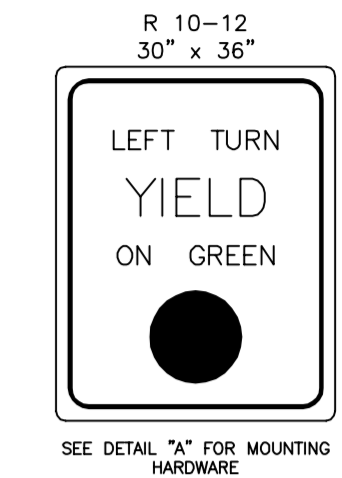
BANDED SIGN MOUNTING BRACKET DETAIL



TYPE I SIGNAL MOUNTING BRACKET ASSEMBLY DETAIL



STANDARD SIGNING



PUSH BUTTON STATION

Message and Sound options include:

- Locating tone
- Verbal Street Name (Example: Crossing Main at Central)
- All features field selectable using a Configurator.

Construction:

- Die-cast aluminum, powder coated black in color.
- Street Name in Braille in the directional arrow of the sign.
- Option "B" signing option.

Push button:

- ADA compliant
- Raised tactile arrow on the button
- Solid State switch rated at a Minimum of 20 million actuations

DWG. NO. N45AND-X

PLATE MARKING OPTIONS

PUSH BUTTON FOR

STANDARD OPTION A

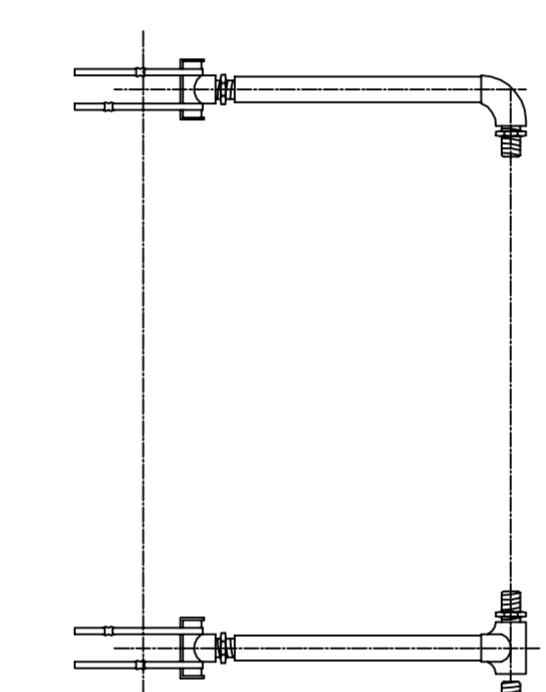
START CROSSING
Watch For
Vehicles

DON'T START
Finish Crossing
If Started

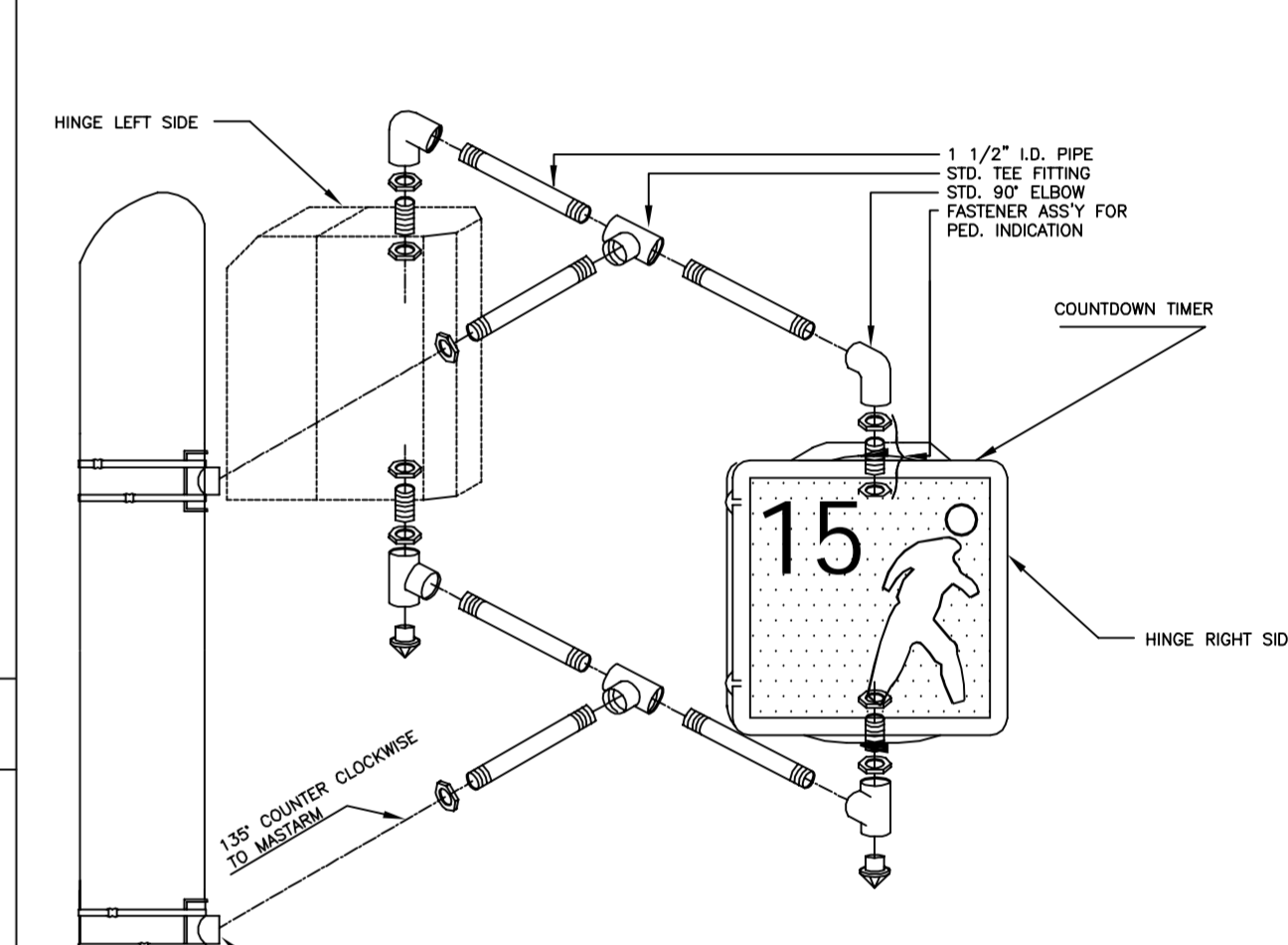
DON'T CROSS
TO CROSS
PUSH BUTTON

OPTION B

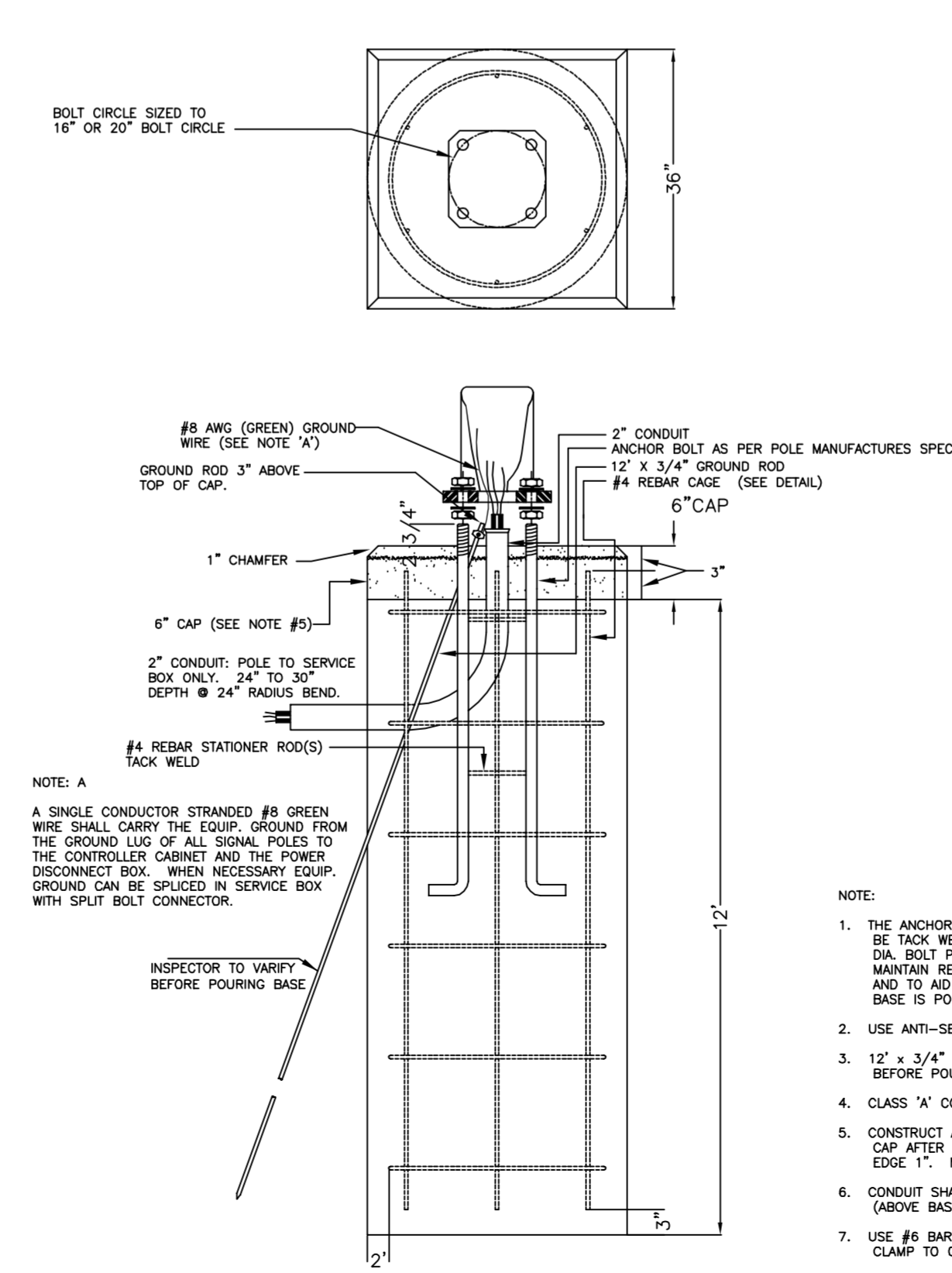
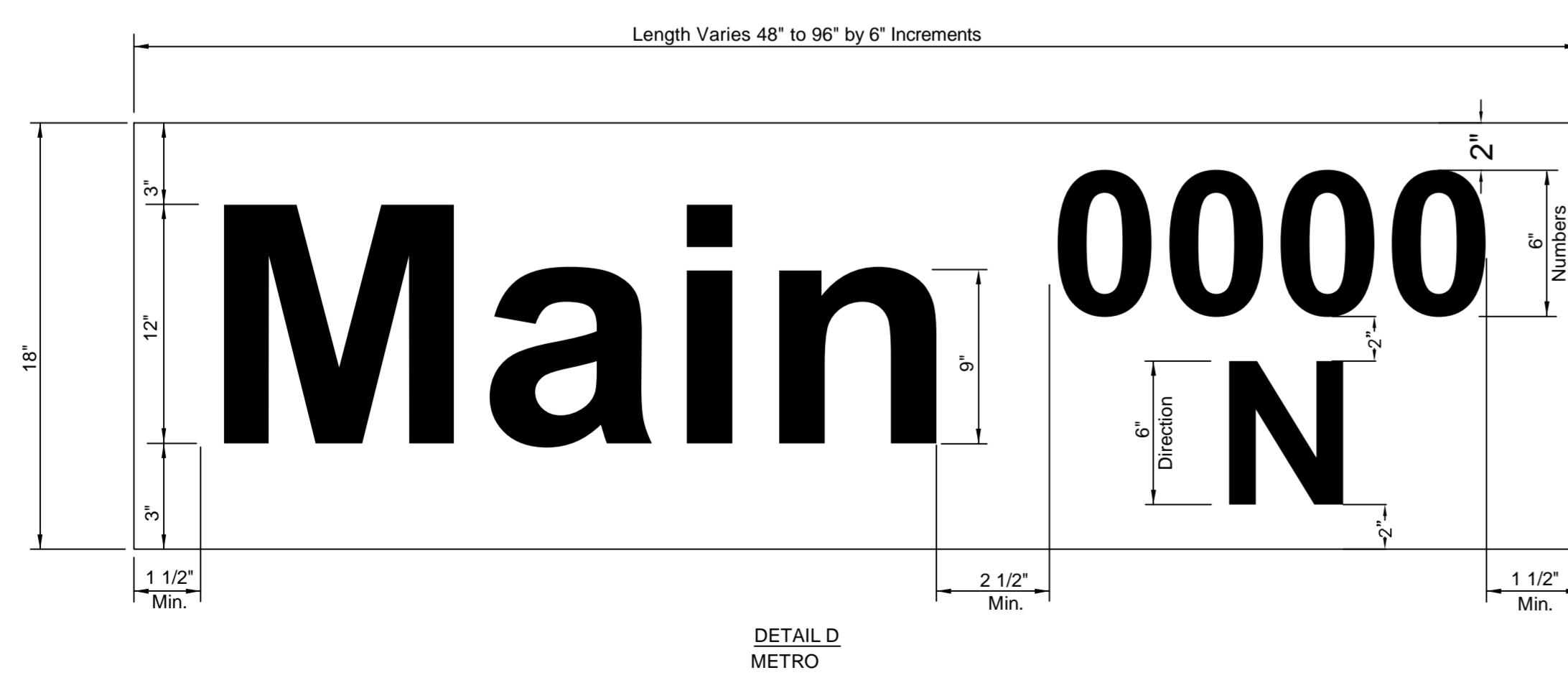
TYPE III SIDE-OF-POLE MOUNTING BRACKET ASSEMBLY



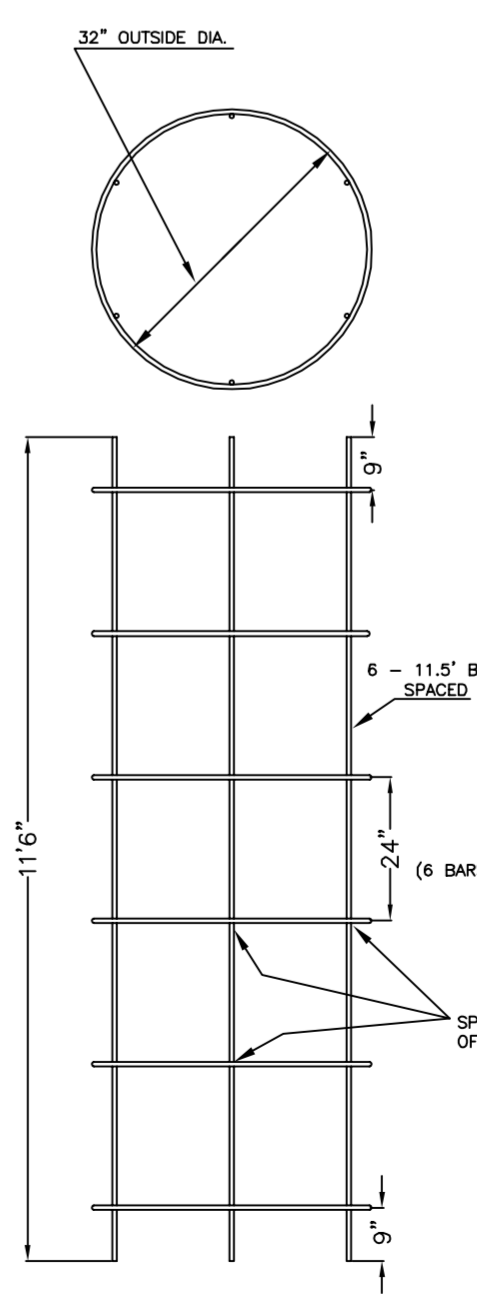
TYPE II SIGNAL MOUNTING BRACKET ASSEMBLY (SIDE-OF-POLE)



- DIRECTIONAL ALIGNMENT OF PED. INDICATIONS & BRACKET(S) SHALL BE DETERMINED IN THE FIELD BY THE ENGINEER.
- THROUGH HOLES IN THE POLE SHALL BE DRILLED AND WELL REAMED TO PREVENT CABLE CHAFING.
- HINGE PEDESTRIAN SIGNAL DOORS AWAY FROM POLE.
- CLAM SHELL BRACKETS ARE NOT ACCEPTABLE.



REBAR CAGE



CITY OF
WICHITA

PUBLIC WORKS & UTILITIES
ENGINEERING DIVISION

REVISED: AUGUST 2014

STEEL SIGNAL POLE ASSEMBLY DETAILS

TRAFFIC ENGINEER
BRIAN A. COON, P.E.

PROJECT NUMBER 472-84700	OCA NUMBER 706991	DATE
------------------------------------	-----------------------------	------

CITY ENGINEER'S OFFICE
CITY HALL - SEVENTH FLOOR
455 NORTH MAIN STREET
WICHITA, KANSAS 67202-1620
(316) 268-4501

SHEET
55 of 95