

# STREET PAVING FOR RED OAKS to serve THE WATERFRONT 7TH ADDITION CITY OF WICHITA, KANSAS

Gary Janzen, P.E. City Engineer

Red Oaks: from the east line of Waterfront Parkway, east and north to the west line of Summerfield

Summerfield: from the west line of Red Oaks, east and south to the north line of Crestwood

Crestwood: from the east line of Red Oaks, east to the east line of Summerfield

Crestwood Ct: from the south line of Crestwood south to the south line of Lot 10, Block A

Red Oaks Ct: from the west line of Red Oaks, west to and including the cul-de-sac

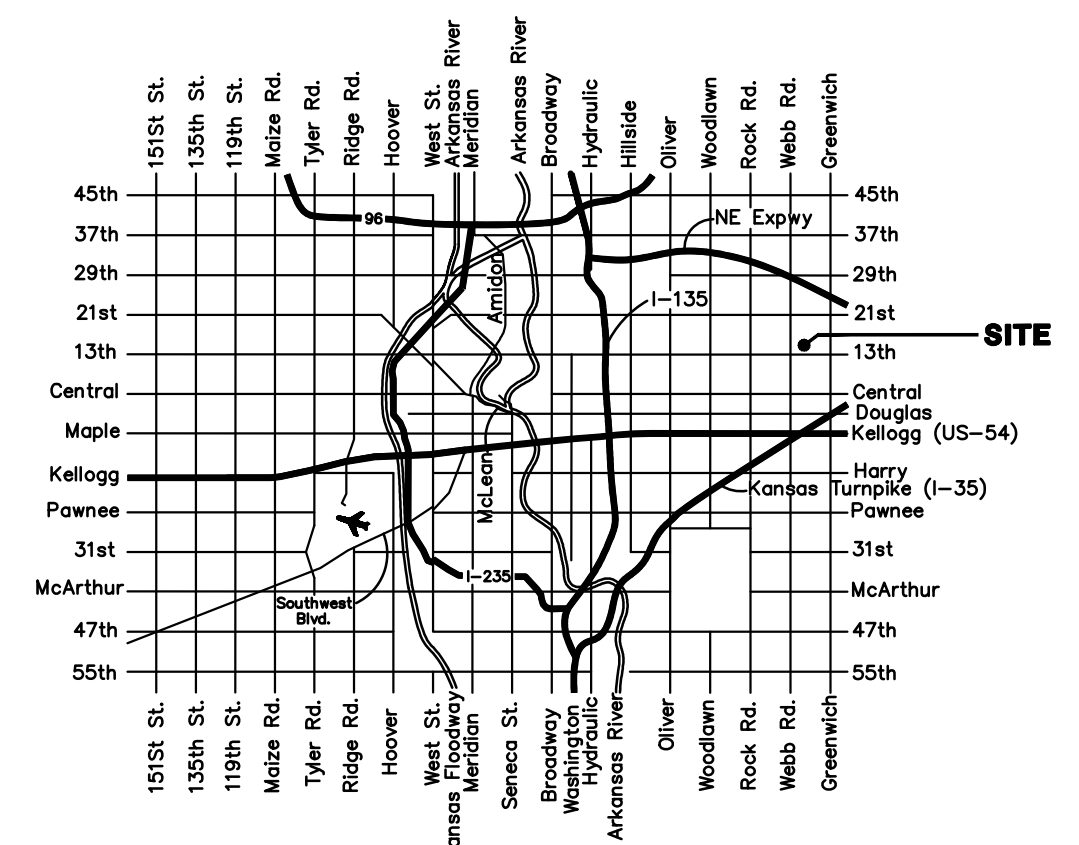
Project Number 472 - 85188 O.C.A. Number 766329

and

Project Number 472 - 85189 O.C.A. Number 766328

and

Project Number 472 - 85190 O.C.A. Number 766330



VICINITY MAP

## GENERAL NOTES:

1. Contractor will be required to provide notice to utility companies a minimum of forty-eight (48) hours prior to any excavation, as follows:  
  

Kansas One-Call	687-2470
The Contractor must notify the following in case of an emergency:	
Cox Communications	262-4270
Kansas Gas Service	1-888-482-4950
Westar Energy	383-8650
Aquila Energy	1-800-303-0357
ATT	268-2245
City of Wichita Water Dept.	268-4563
City of Wichita Sewer Maint.	268-4024
City of Wichita Storm Sewer Maint.	268-4090
City of Wichita Traffic Maint.	268-4034
Conoco Phillips Pipeline Co.	1-877-267-2290
Southern Star Pipeline Co.	529-6600
Kinder-Morgan Pipeline Co.	1-888-844-5658
2. Utility service lines, poles, valve boxes, meters, and etcetera are to be adjusted as necessary by others prior to construction unless the plans specifically call for their adjustment by the Contractor or unless the plans specifically identify a utility to be adjusted by its owner during construction. Existing utilities and their location, as shown on the plans, represent the best information obtainable for design. The Contractor will be required to work around existing utilities within the right-of-way which do not conflict with proposed construction.
3. Rubble from the removal of miscellaneous structures and excess excavation which is to be wasted shall be disposed of on sites to be provided by the Contractor. These sites shall be approved by the Engineer as to suitability, appearance and site location. Locations, in the opinion of the Engineer, that will leave an unsightly appearance will not be approved. All disposal sites must be approved by the Kansas Department of Health and Environment. Material either stockpiled or disposed of in a flood plain would require a Kansas State Board of Agriculture permit. Any material dumped in waters of the United States or wetlands is subject to U.S. Corps. of Engineers permitting regulations. Any material buried or stockpiled beyond approved construction limits would require additional archaeological investigations unless buried in a previously approved borrow location.
4. Trees and shrubs in public right-of-way which are in direct conflict with proposed new construction shall be removed by the Contractor ONLY with the Developer or Baughman Company approval. Trees and shrubs which are not in direct conflict with proposed new construction shall be saved and protected from damage.
5. The Contractor shall give all property owners and/or tenants of developed property abutting the construction of this project a minimum of ten (10) days notice prior to start of construction.
6. The Contractor shall be responsible for preserving property irons. The Contractor will be required to re-establish any property irons which are damaged or destroyed by his construction operations. Such irons shall be re-established by a licensed Land Surveyor in accordance with state laws.
7. All existing and proposed erosion control measures including silt fencing, erosion control mat, straw bales, inlet barriers, and const. entrance shall be maintained throughout construction by the Contractor and until project is accepted by the City of Wichita. The on-site Engineer shall complete weekly reports on the status of erosion control measures. The Contractor shall be required to comply with maintenance and/or replacement of erosion control measures as determined by the on-site Engineer until project is accepted by City of Wichita.
8. A saw cut of at least one-half the depth of existing surface courses or one-fourth the depth of the existing total pavement thickness shall be provided at locations where proposed construction abuts the existing surface course or pavement for which partial removal of that surface or pavement is required. Sawed joint to facilitate removal within three (3) feet of existing joints will not be permitted and for such instances the limits of removal shall extend to the existing joint. Such saw cuts will not be paid for directly and this cost shall be considered as subsidiary to the removal of the surface or pavement.
9. All areas disturbed during construction shall be seeded as noted on the Erosion Control Plan. Contractor shall prepare ground per City of Wichita Specifications. All costs associated with seeding shall be included in bid item "Project Seeding"
10. The Contractor shall adjust valve boxes as necessary to match proposed grade. Cost to be included in bid item, "Site Restoration."
11. The Contractor shall drain any standing water in sump areas of the proposed pavement. Contractor shall overexcavate and recompact these areas as required to maintain compaction of 95% Standard Proctor Density. Cost to be incidental to pavement.
12. Limits shall extend to the easement line and then slope up or down using permissible slopes to match the existing ground surface.
13. The Developer for this project is Charlie Stevens and may be reached at (316) 636-2100.
14. Material for borrow excavation is available at an adjacent site to the south within the common Waterfront development. If excess excavation remains, it shall be stockpiled or spread on-site at a location determined by the Developer or Design Engineer.
15. Due to proposed listing of the Northern Long-Eared bat as a threatened/endangered species, tree removal will likely not be allowed between May 1, 2015 and October 31, 2015. Due to this information, all tree removal for this project must be completed prior to May 1, 2015. Contractor and/or subcontractors will be required to mobilize/de-mobilize as necessary to accomplish required tree removal. If the tree removal as noted on the plans is not completed prior to May 1 and causes delays in construction, working days will continue to be charged until substantial completion is reached. Liquidated damages will be assessed per City of Wichita Standard Specifications. See Sheet 17 for additional tree clearing information.

## BENCHMARKS

- BM #1:  
"□" Chiseled on Top of Curb.  
West End of South Median Curb  
within Castewood  
Elevation = 1380.50 (NAVD 88)
- BM #2  
"X" Chiseled on Back of Walk.  
Near the Southeast corner of  
Lot 2, Block A, The Waterfront  
7th Addition  
Elevation = 1381.88 (NAVD 88)
- BM #3  
"□" Chiseled on Back of Walk.  
Northeast corner of parking lot  
within Lot 1, Block 1, The  
Waterfront 4th Addition  
Elevation = 1389.50 (NAVD 88)

## SHEET INDEX

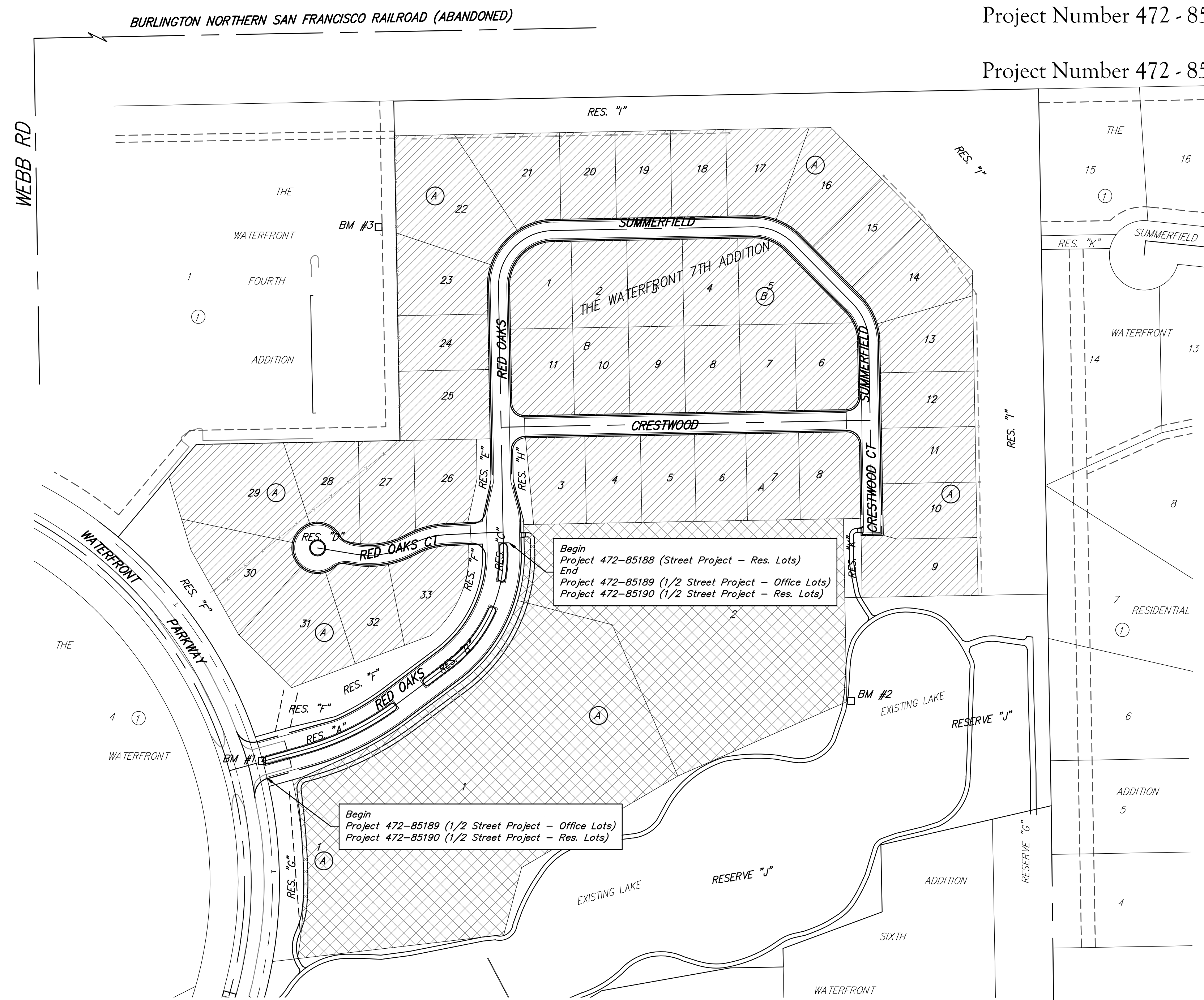
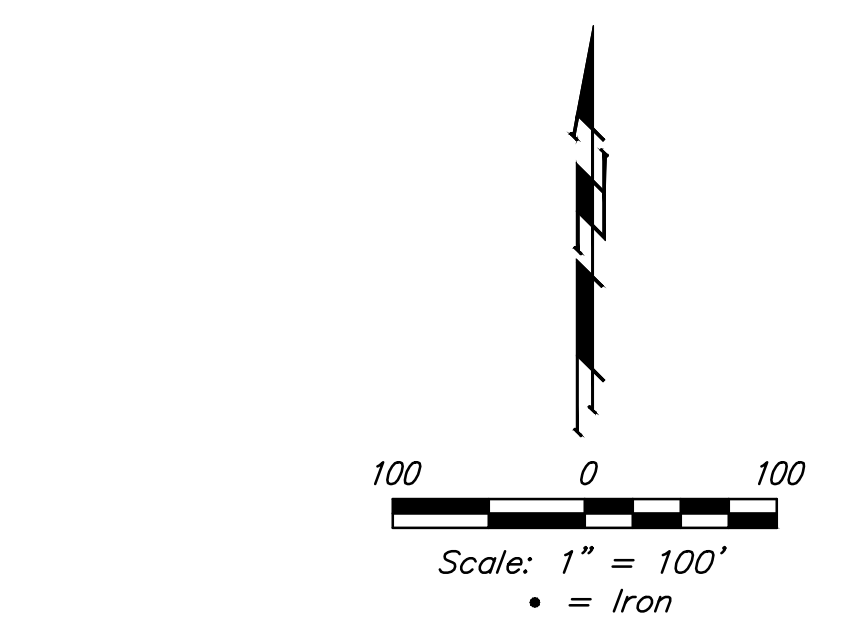
Title Sheet	1
Curb & Gutter Details	2
Sign Details	3
Miscellaneous Details	4
Pavement Underdrain Details	5
Red Oaks	6-8
Summerfield/Summerfield Ct.	9-11
Red Oaks Ct	12
Crestwood	13
Joint Plans	14-16
Erosion Control Plan	17
Coordinate Sheet	18
Erosion Control BMP Details	19-23
Cross Sections	24-31
Copy of Plat	32-33

<b>Project Earthwork Totals</b>	
Excavation = 3,414 C.Y.	
Loose Fill = 2,730 C.Y.	
Compacted Fill = 1,259 C.Y.	
<b>Total Project Length</b>	
2,628 L.F. = 0.50 Miles	



**Baughman**

Baughman Company, P.A. 315 Ellis St. Wichita, KS 67211 P 316-262-7271 F 316-262-0149  
ENGINEERING | SURVEYING | PLANNING | LANDSCAPE ARCHITECTURE



Proj. No. 472-85188 &  
472-85190 Benefit District

Proj. No. 472-85189 Benefit District

13TH ST N