

# BENCHMARKS

**BM #1:**  
 "□" Chiseled on Top of Curb.  
 West End of South Median Curb  
 within Castletwood  
 Elevation = 1380.50 (NAVD 88)

**BM #2:**  
 "X" Chiseled on Back of Walk.  
 Near the Southeast corner of  
 Lot 2, Block A, The Waterfront  
 7th Addition  
 Elevation = 1381.88 (NAVD 88)

**BM #3:**  
 "□" Chiseled on Back of Walk.  
 Northeast corner of parking lot  
 within Lot 1, Block 1, The  
 Waterfront 4th Addition  
 Elevation = 1389.50 (NAVD 88)

**NOTE:**  
 Trees and shrubs in the work area which  
 are in direct conflict with proposed  
 construction shall be removed by the  
 Contractor ONLY with the Developer or  
 Baughman Company approval. Trees and  
 shrubs which are not in direct conflict  
 with proposed grading construction shall  
 be saved and protected from damage.  
 Trees not in direct conflict shall be  
 chainsaw trimmed as necessary. An  
 on-site pre-construction meeting will  
 occur prior to any construction to  
 discuss tree trimming and removal. All  
 tree removal, clearing, chainsaw trimming,  
 etc. shall be included in the bid item,  
 "Site Clearing."

= Easements To Be Graded

Approximate Easement Grading Quantities:  
 (For Information Only) C.Y.

	Excavation	Fill
Rear Easements	542	432
Ditch Grading	143	-
Total	685	432

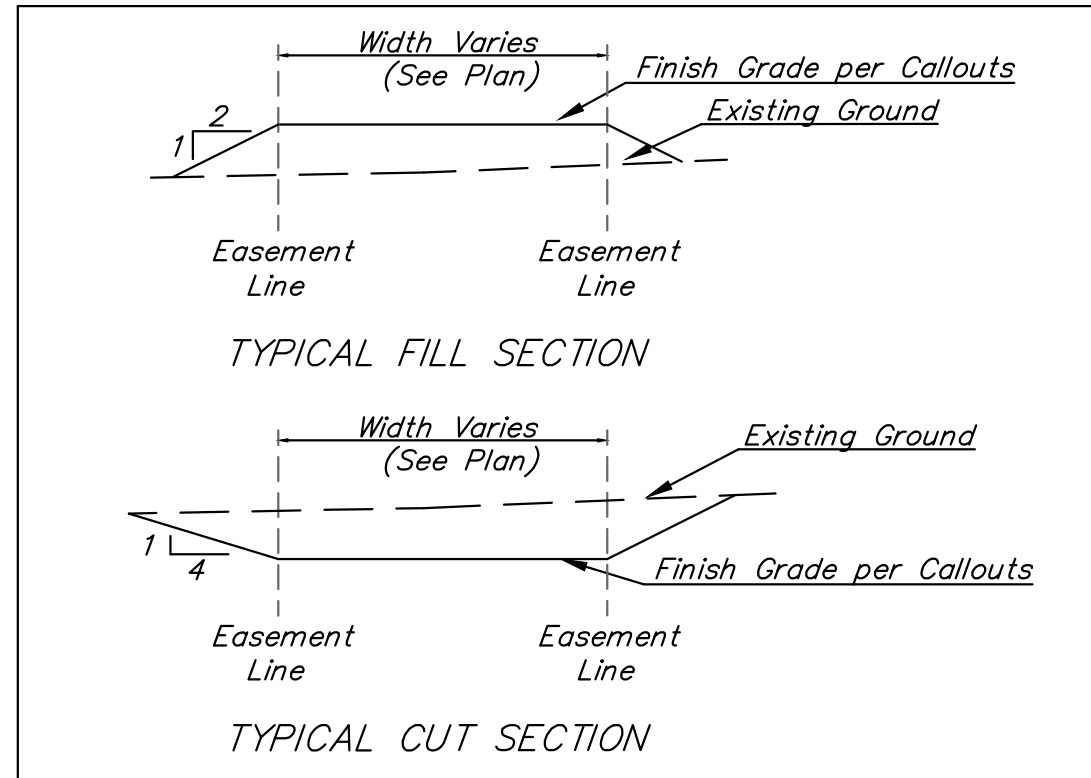
Front Easements are included in Street Earthwork Quantities

The Contractor shall grade the easements as shown to the elevations given on the easement grading plan.

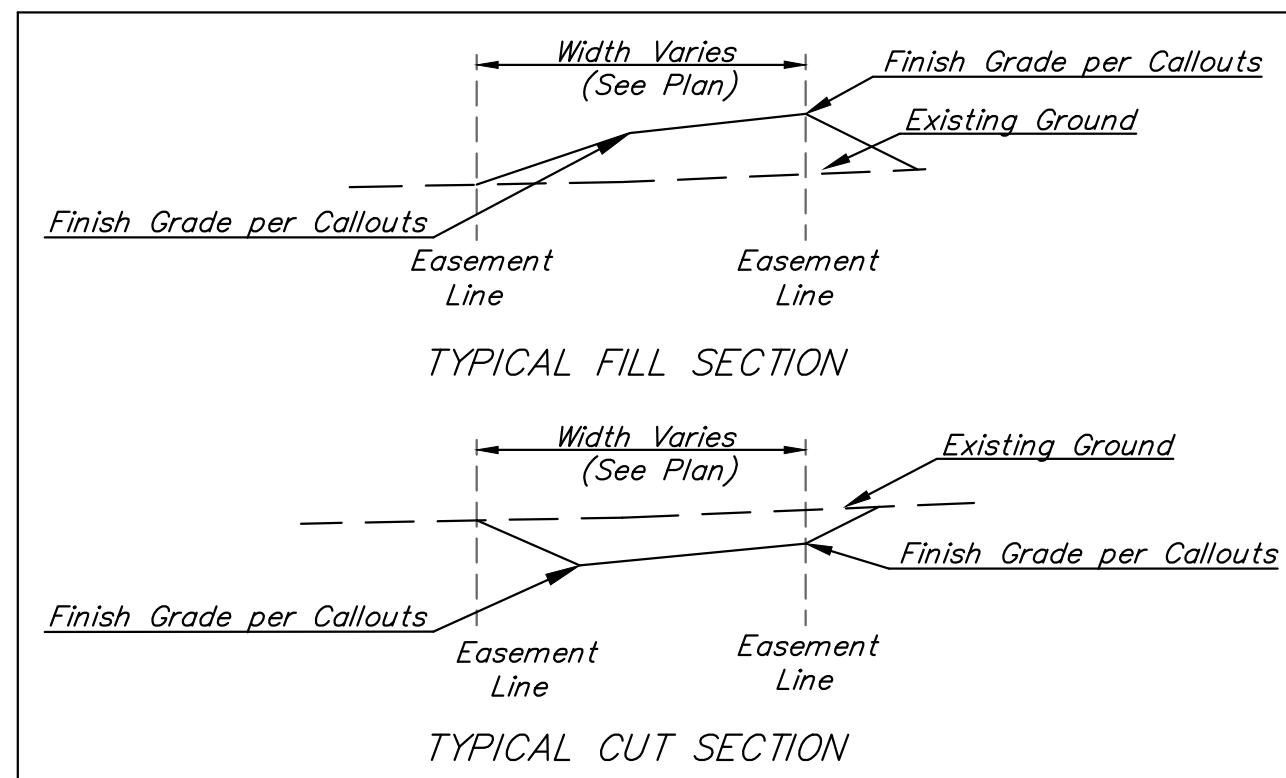
The Contractor shall 'straight' grade the easements between the elevations given. Where a callout designates 'Match', the Contractor will grade to the existing ground elevation.

Excess excavation from easement grading and from sanitary sewer construction shall be placed on the lots as indicated to the elevations shown.

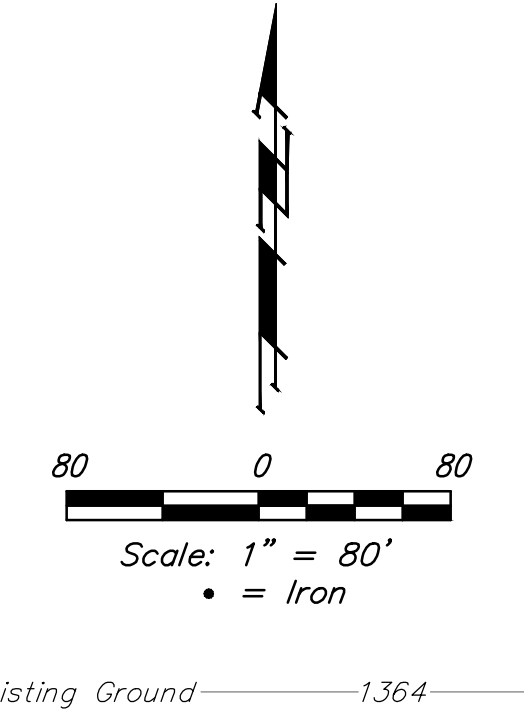
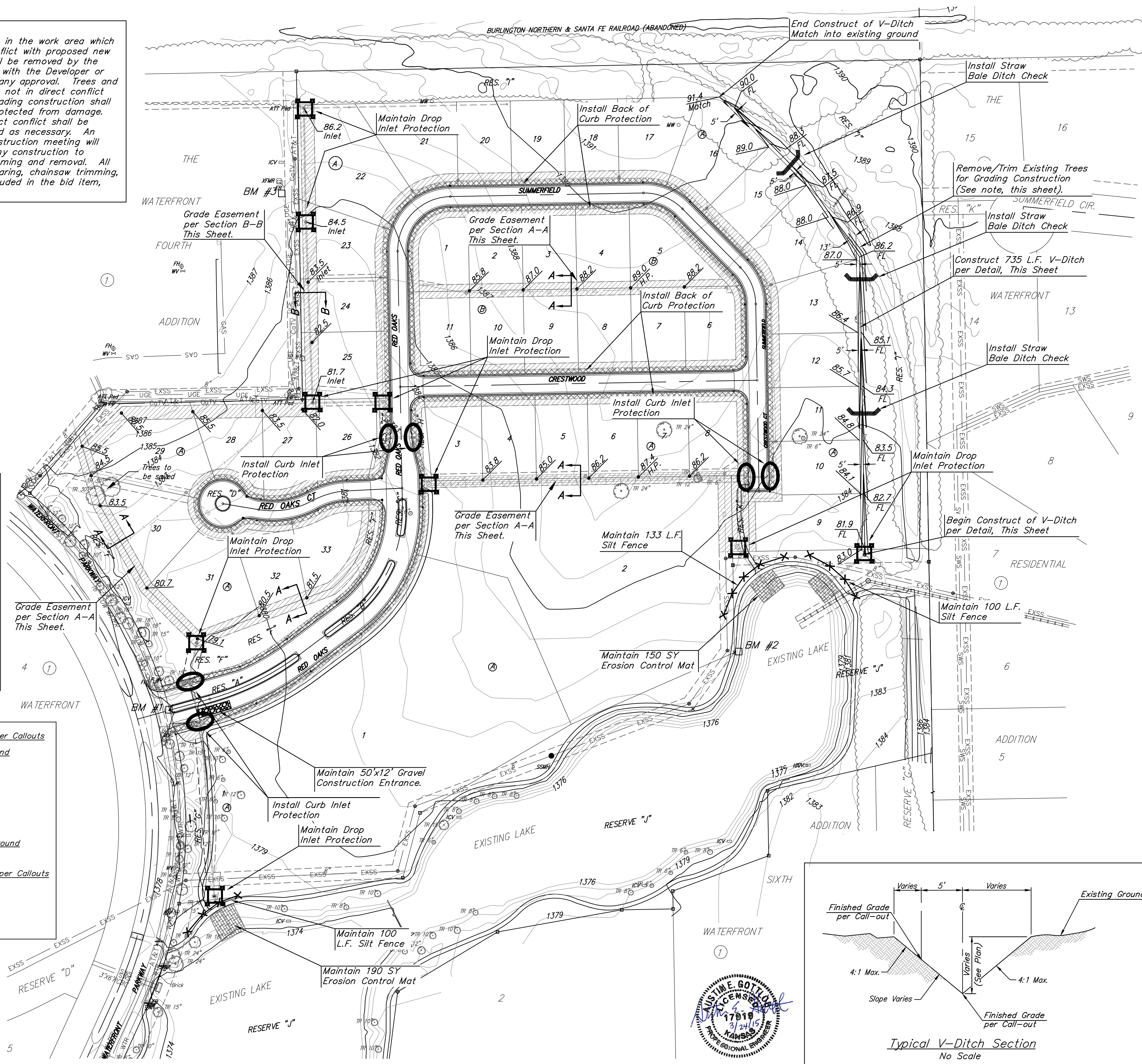
All cost to be included in the Lump Sum bid item "Easement Grading"



SECTION A-A



SECTION B-B



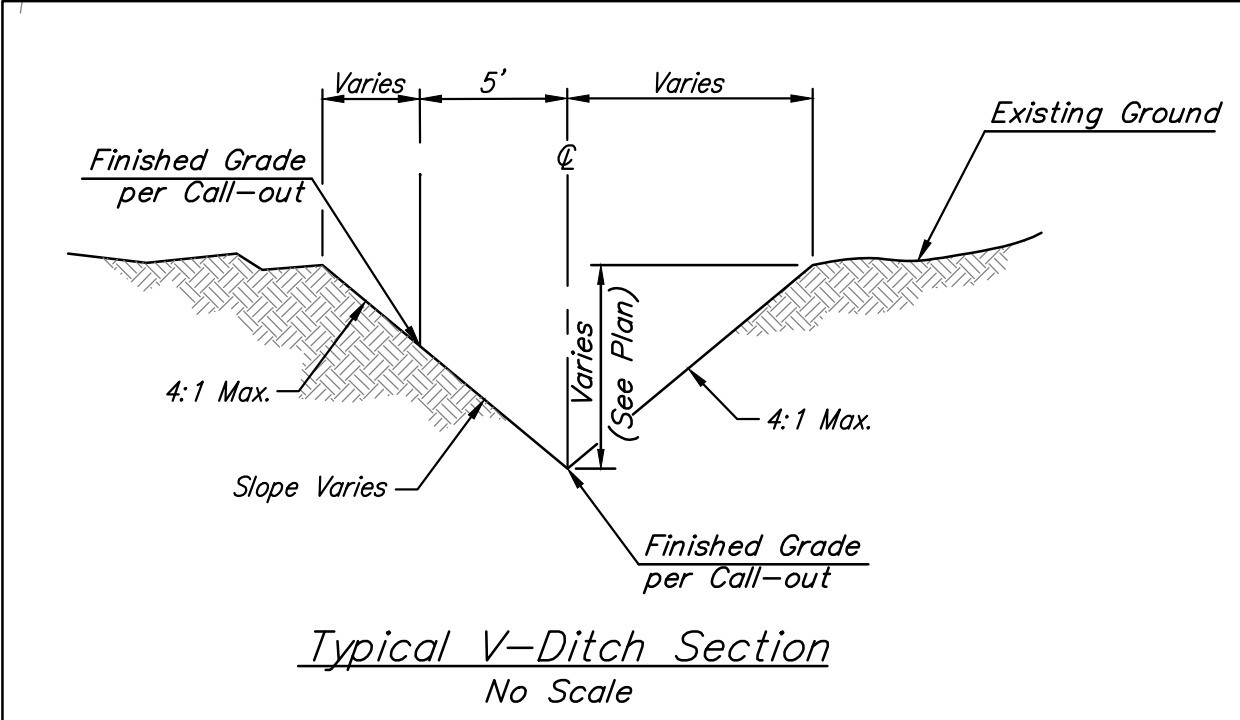
**NOTES:**  
 Contractor shall make sure all erosion control is in place before project is accepted. This plan represents the minimum standard. Any additional erosion control measures shall be installed by the Contractor as needed.  
 All areas disturbed during construction shall be seeded, mulched, and fertilized as per Cover Sheet General Notes.

**EROSION CONTROL PLAN LEGEND**

- DROP INLET PROTECTION
- CURB INLET PROTECTION
- DITCH CHECKS
- SILT FENCING
- BACK OF CURB PROTECTION
- EROSION CONTROL MAT

EROSION CONTROL MEASURE	INSTALL	MAINTAIN	REMOVE
BACK OF CURB PROTECTION (LF)	5,188	0	0
CONSTRUCTION ENTRANCE (EA)	0	1	1
CURB INLET BARRIER (EA)	6	0	0
DITCH CHECK (EA)	3	0	0
DROP INLET PROTECTION (EA)	0	9	0
EROSION CONTROL (LS)	0	0	0
EROSION CONTROL BERM (LF)	0	0	0
SILT FENCE (LF)	0	333	0
EROSION CONTROL MAT (SY)	0	465	0

Quantities are for information only! contractor shall Verify quantities per final bid quantity sheet.  
 \* All existing BMPs including Construction Entrance, Sediment Barriers, Silt Fence, Cut-off Trench, and Erosion Control Mat shall be maintained and repaired if necessary. Replacement or removal of erosion control measures to be paid for by L.S. Bid item "Maintain Existing Erosion Control BMPs"



**Baughman**  
 The Waterfront 7th Addition  
 Easement Grading &  
 Erosion Control  
 Street Improvements

Baughman Company, P.A. 315 Ellis St. Wichita, KS 67211 P 316-262-7271 F 316-262-0149  
 ENGINEERING | SURVEYING | PLANNING | LANDSCAPE ARCHITECTURE

PROJECT NUMBER	DESIGN	DRAWN
	AEG	JAK
REVISIONS:	APPROVED	DATE
		11/14
	SCALE	
	Noted	
	SHEET	

**17 OF 33**