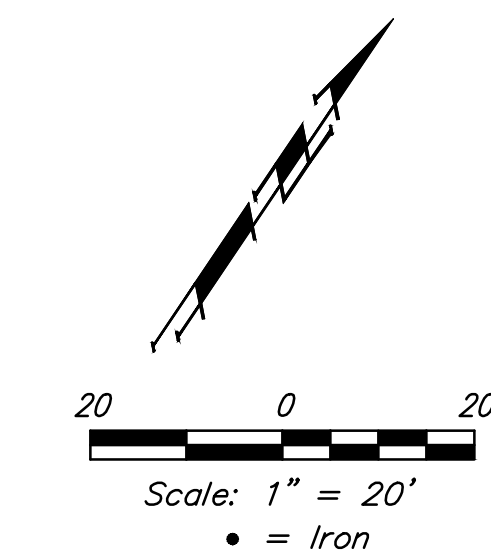


BENCHMARKS

BM #1:
"□" Chiseled on Top of Curb.
West End of South Median Curb
within Castlewood
Elevation = 1380.50 (NAVD 88)

BM #2
"x" Chiseled on Back of Walk.
Near the Southeast corner of
Lot 2, Block A, The Waterfront
7th Addition
Elevation = 1381.88 (NAVD 88)

BM #3
"□" Chiseled on Back of Walk.
Northeast corner of parking lot
within Lot 1, Block 1, The
Waterfront 4th Addition
Elevation = 1389.50 (NAVD 88)



NOTE:
Contractor shall contact Mike Stephens
with Level 3 Communications 2 weeks
prior to start of construction.

CAUTION!
U/G Irrigation System In Area
(not field verified)
The Contractor will be required to
repair any damage which may
occur during construction.

Remove 277 SY Ex. Conc. Pvm't,
165 LF Curb & Gutter, & 80 LF
Medial Curb as Indicated. Cost
to be included in "Site Clearing".

Sta. 0+56, 0' Rt.
Install R4-7 (Keep Right)
& OM-1 Sign.

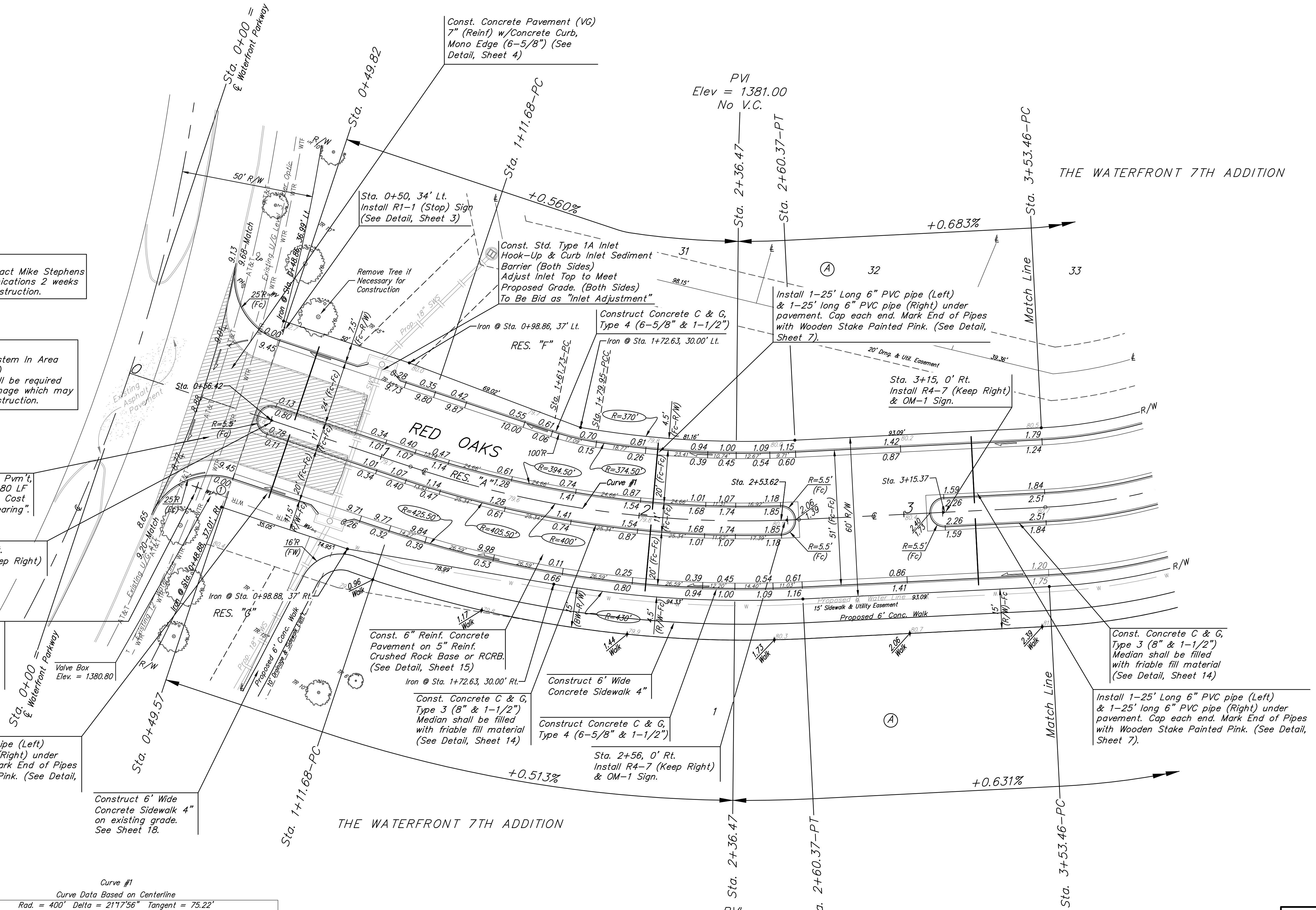
Sta. 0+37, 33' Rt.
Install Std. (SNS)
Ass'y per City Specs.
"Waterfront" &
"Red Oaks"
(See Detail, Sheet 3)

Install 1-29' Long 6" PVC pipe (Left)
& 1-25' long 6" PVC pipe (Right) under
pavement. Cap each end. Mark End of Pipes
with Wooden Stake Painted Pink. (See Detail,
Sheet 7).

Construct 6' Wide
Concrete Sidewalk 4"
on existing grade.
See Sheet 18.

Curve #1
Curve Data Based on Centerline

Curve Data Based on Centerline					
Rad. = 400' Delta = 21°17'56" Tangent = 75.22'					
Arc = 148.69' L.C. = 147.84' Def./ft. = 4.29731 Min.					
Station	Arc	Face Chord Lengths		Defl.	Total Defl.
		8' Left	8' Right		
1+11.68	-	-	-	0°00'00"	0°00'00"
1+25.00	13.32'	12.20'	14.44'	0°57'14"	0°57'14"
1+50.00	25.00'	22.90'	27.09'	1°47'26"	2°44'40"
1+75.00	25.00'	22.90'	27.09'	1°47'26"	4°32'06"
1+79.95	4.95'	4.54'	5.36'	0°21'17"	4°53'23"
2+00.00	20.05'	18.37'	21.73'	1°26'09"	6°19'32"
2+25.00	25.00'	22.90'	27.09'	1°47'26"	8°06'58"
2+36.47	11.47'	10.51'	12.43'	0°49'18"	8°56'16"
2+50.00	13.53'	12.40'	14.66'	0°58'08"	9°54'24"
2+60.37	10.37'	9.50'	11.24'	0°44'34"	10°38'58"



PVI
Elev = 1381.00
No V.C.

		The Waterfront 7th Addition	
		RED OAKS	
PROJECT NUMBER		DESIGN AEG DRAWN JAK	
REVISIONS:		APPROVED DATE 11/14	
		SCALE Noted SHEET	
		6 OF 33	

