

**BENCHMARKS**

BM #1:  
"□" Chiseled on Top of Curb.  
West End of South Median Curb  
within Castlewood  
Elevation = 1380.50 (NAVD 88)

BM #2  
"X" Chiseled on Back of Walk.  
Near the Southeast corner of  
Lot 2, Block A, The Waterfront  
7th Addition  
Elevation = 1381.88 (NAVD 88)

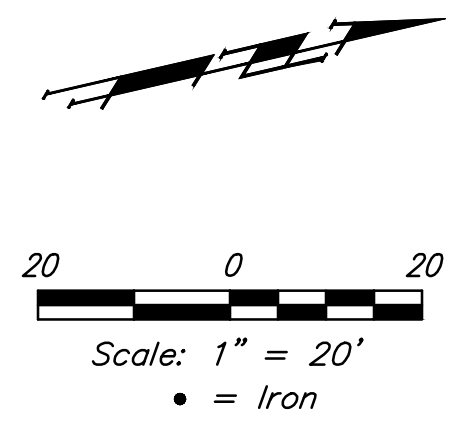
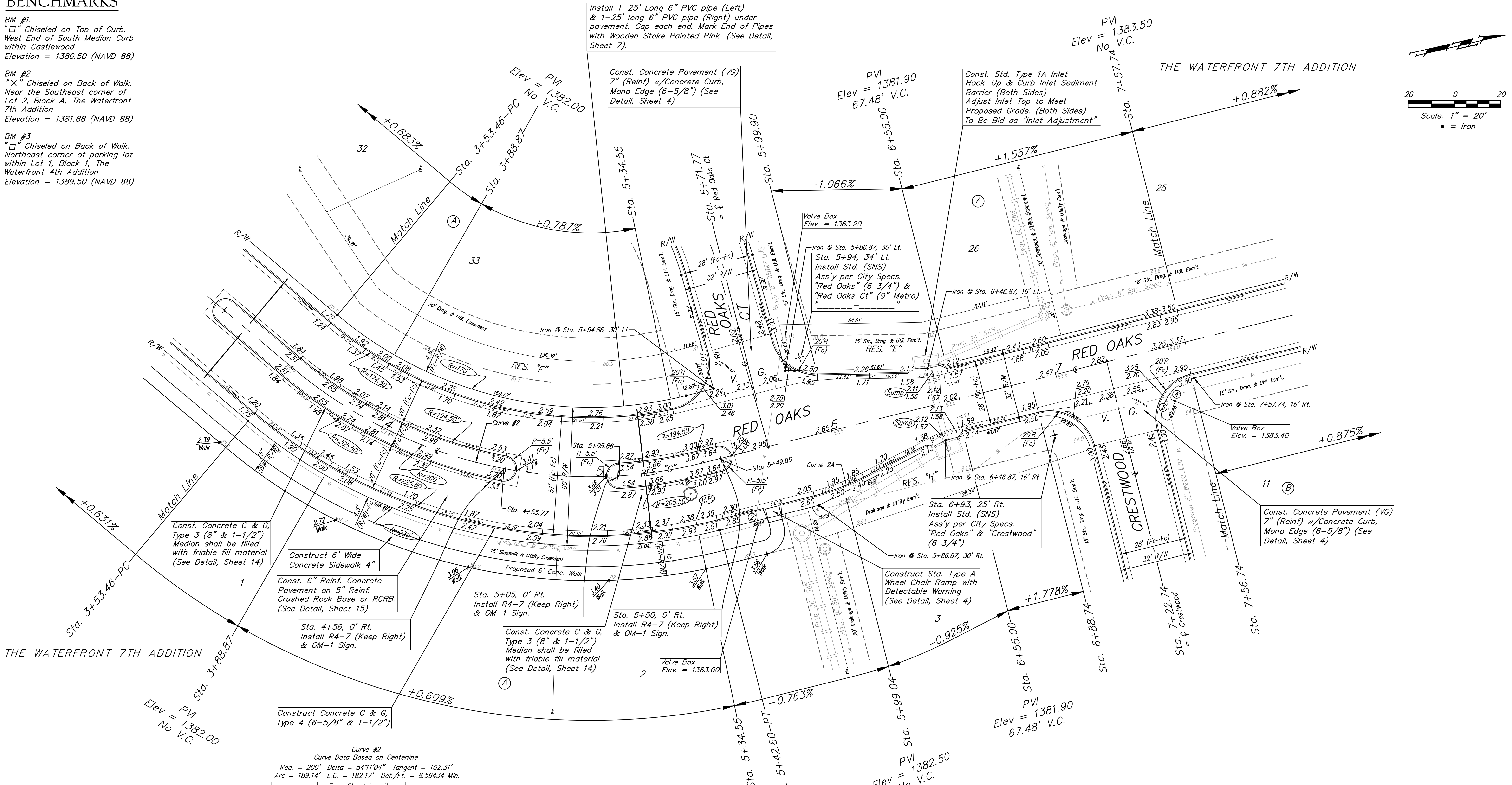
BM #3  
"□" Chiseled on Back of Walk.  
Northeast corner of parking lot  
within Lot 1, Block 1, The  
Waterfront 4th Addition  
Elevation = 1389.50 (NAVD 88)

Install 1-25' Long 6" PVC pipe (Left)  
& 1-25' long 6" PVC pipe (Right) under  
pavement. Cap each end. Mark End of Pipes  
with Wooden Stake Painted Pink. (See Detail,  
Sheet 7).

Const. Concrete Pavement (VG)  
7" (Reinf) w/Concrete Curb,  
Mono Edge (6-5/8") (See  
Detail, Sheet 4)

Const. Std. Type 1A Inlet  
Hook-Up & Curb Inlet Sediment  
Barrier (Both Sides)  
Adjust Inlet Top to Meet  
Proposed Grade. (Both Sides)  
To Be Bid as "Inlet Adjustment"

Const. Concrete Pavement (VG)  
7" (Reinf) w/Concrete Curb,  
Mono Edge (6-5/8") (See  
Detail, Sheet 4)



Curve #2  
Curve Data Based on Centerline  
Rad. = 200' Delta = 54°11'04" Tangent = 102.31'  
Arc = 189.14' L.C. = 182.17' Def./Ft. = 8.59434 Min.

Station	Arc	Face Chord Lengths		Defl.	Total Defl.
		8' Left	8' Right		
3+53.46	-	-	-	0°00'00"	0°00'00"
3+75.00	21.54'	17.92'	25.14'	3°05'07"	3°05'07"
3+88.87	13.87'	11.54'	16.19'	1°59'13"	5°04'20"
4+00.00	11.13'	9.26'	12.99'	1°35'39"	6°39'59"
4+25.00	25.00'	20.80'	29.17'	3°34'51"	10°14'50"
4+50.00	25.00'	20.80'	29.17'	3°34'52"	13°49'42"
4+61.30	11.30'	9.41'	13.19'	1°37'07"	15°26'49"
4+75.00	13.70'	11.40'	15.99'	1°57'44"	17°24'33"
5+00.00	25.00'	20.80'	29.17'	3°34'52"	20°59'25"
5+00.36	0.36'	0.30'	0.42'	0°03'06"	21°02'31"
5+25.00	24.64'	20.50'	28.75'	3°31'45"	24°34'16"
5+34.55	9.55'	7.95'	11.15'	1°22'05"	25°56'21"
5+42.60	8.05'	6.70'	9.40'	1°09'11"	27°05'32"

Curve #2A  
Curve Data Based on Face of Curb  
Rad. = 100' Delta = 13°08'02" Tangent = 11.51'  
Arc = 22.92' L.C. = 22.87' Def./Ft. = 17.19095 Min.

Station	Arc	Face Chord Lengths		Defl.	Total Defl.
		8' Right	Defl.		
5+85.84, 25.50' Rt.	-	-	0°00'00"	0°00'00"	
5+99.04, 24.62' Rt.	13.24'	14.29'	3°47'36"	3°47'36"	
6+08.57, 22.88' Rt.	9.68'	10.45'	2°46'25"	6°34'01"	

**Baughman** The Waterfront 7th Addition  
**RED OAKS**  
Sta. 3+53.46 to Sta. 6+88.74

Baughman Company, P.A. 315 Ellis St. Wichita, KS 67211 P 316-262-2271 F 316-262-0149  
ENGINEERING | SURVEYING | PLANNING | LANDSCAPE ARCHITECTURE

PROJECT NUMBER	DESIGN	DRAWN
REVISIONS:	AEG	JAK
	APPROVED	DATE
		11/14
	SCALE	
	Noted	
	SHEET	

7 OF 33

E:\Projects\Waterfront Seventh Addition\_1347.P067.Engineering\Phase 1\Str\_1449\E120\STREET PLANS.dwg