

GENERAL NOTES:

1. All construction shall be completed following most recent City of Wichita Standards, Specifications and Special Provisions.

2. Contractor will be required to provide notice to utility companies a minimum of twenty-four (24) hours prior to any excavation, as follows:

Kansas One-Call (316)687-2470

The Contractor must notify the following in case of an emergency:

Cox Communications (316)262-4270
or (316)263-2061

Westar Energy/
Kansas Gas & Electric Company (800)482-4950
AT&T 1-555-1212

City of Wichita Water Department (316)268-4908
City of Wichita Sewer Department (316)268-4071
Aquila Natural Gas (316)941-1608
or (800)303-0357

3. Exist. utilities and their locations, as shown on the plans, represent the best information attainable for design. Location information has been obtained from the various utility companies and is either from company record drawings or company-provided field locations. The Contractor will be required to work around existing utilities which do not conflict with proposed constructions.

4. The Contractor to verify utility locations prior to construction of this project.

5. Utility service and installation shall be coordinated with the respective utility owner. Contacts are:

Kansas Gas Service Tim Hamlin (316)832-3121
Westar Energy Shane Price (316)261-6315
Black Hills Energy Daryl Keller (316)941-1654
Wichita Water & Sewer Greg Lolley (316)268-4334
AT&T Jason Edwards (316)268-2008
Cox Communications Mark Henderson (316)260-7745

6. All lawn/turf areas disturbed by construction of proposed improvements shall be restored with the same grass as existing. Restoration of disturbed areas shall include, but not limited to, soil preparation, fertilizing, seeding, mulching (all seeded areas, outside the limits of erosion mat placement), and/or reseeding, and installation of erosion control mat. All seeding work shall be in accordance with the City of Wichita Standard Specifications and the City of Wichita Administrative Regulations No. AR 6.5 which governs cleanup and respiration or replacement following construction. All cost for the soil preparation, seeding and mulching (all seeded areas, outside the limits of erosion mat placement) shall be paid for through the lump sum bid item for "Seeding." All seeded areas within eight feet of the back of new curb shall be covered with an approved erosion mat, which shall be paid for by the measured quantity bid item "Back of Curb Protection (8' wide)."

7. Traffic affected by the construction of this project shall be handled in accordance with the latest edition of the Manual on Uniform Traffic Control Devices.

8. It is the contractor's responsibility to visit this site to better understand the extent of site clearing and restoration to be performed. Site Clearing and Restoration shall include all costs for removal of items which a pay item is not provided.

9. The contractor shall be responsible for preserving property irons. The contractor will be required to re-establish any property irons which are damaged or destroyed by the construction operations. Such irons shall be re-established by a licensed land surveyor in accordance with state laws.

10. Properties within the project limits may have underground sprinkler systems in public right-of-way which conflict with new construction. Contractor will be required to remove such improvements should they not be removed by their owner at the time of construction of the project. The contractor will be required to salvage all sprinkler heads and/or valves and give such material to owner. Portions of underground sprinkler systems not in conflict with new construction shall be protected from damage and shall remain in place. All work in connection with underground sprinkler systems shall be considered as subsidiary to the contract pay items for work.

11. Cuts made in paved surfaces on public property will be repaired by the City's Contractor and charged against the contractor. Unit Repair prices are available from the city at 268-4418. A surcharge may be applicable. Call 268-4418 for details. Repair costs to be paid prior to release of utility service if utilities are effected.

SANITARY SEWER TO SERVE UNDERGROUND VAULTS & STORAGE

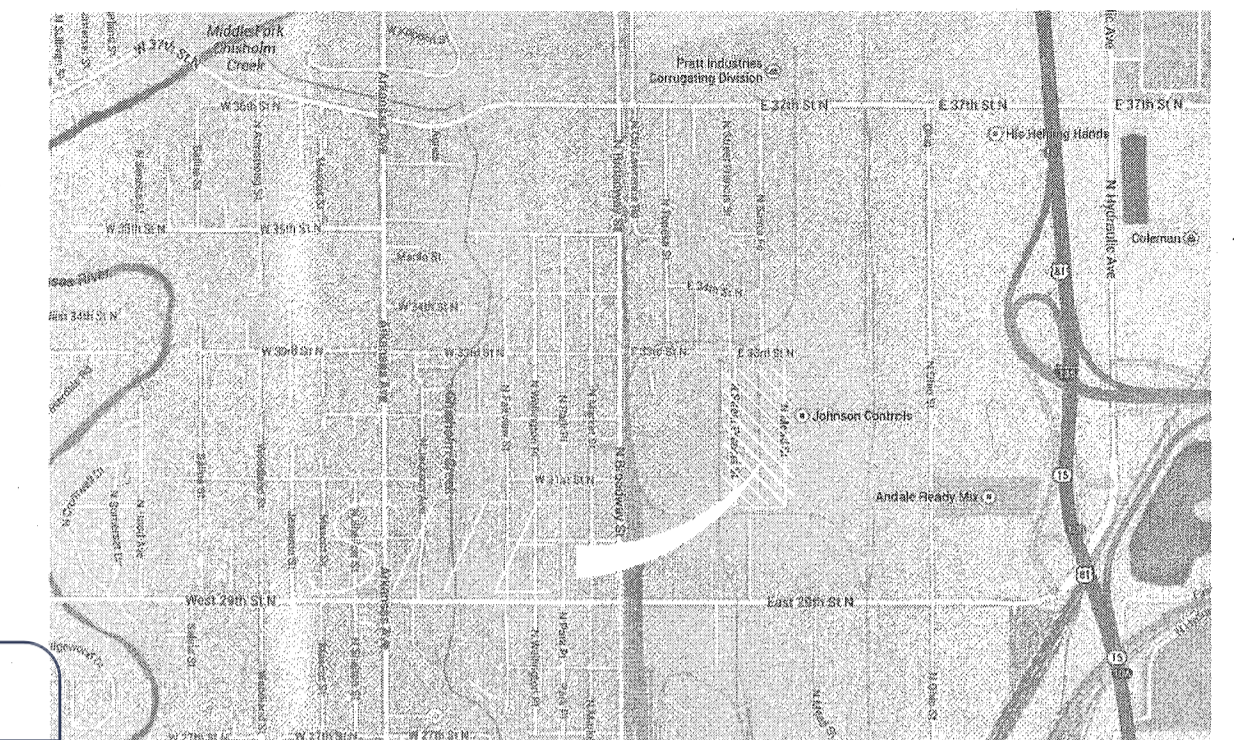
3333 N. Mead, Wichita, KS 67219

2221 PPS (607861)

CITY OF WICHITA, KANSAS

Gary Janzen, P.E., City Engineer

T. Mason - City of Wichita, Inspector
Stub
Release Date: 4/30/2015
:apr 5/4/2015



AS BUILTS

Contractor:
McCullough
Excavation, Inc.
4/29/2015

Project Inspector:
Larry Gann

KEMILLER
ENGINEERING PA
117 E. Lewis, Wichita, KS 67202 (316)264-0242

LOCATION MAP (For Visual Use Only)

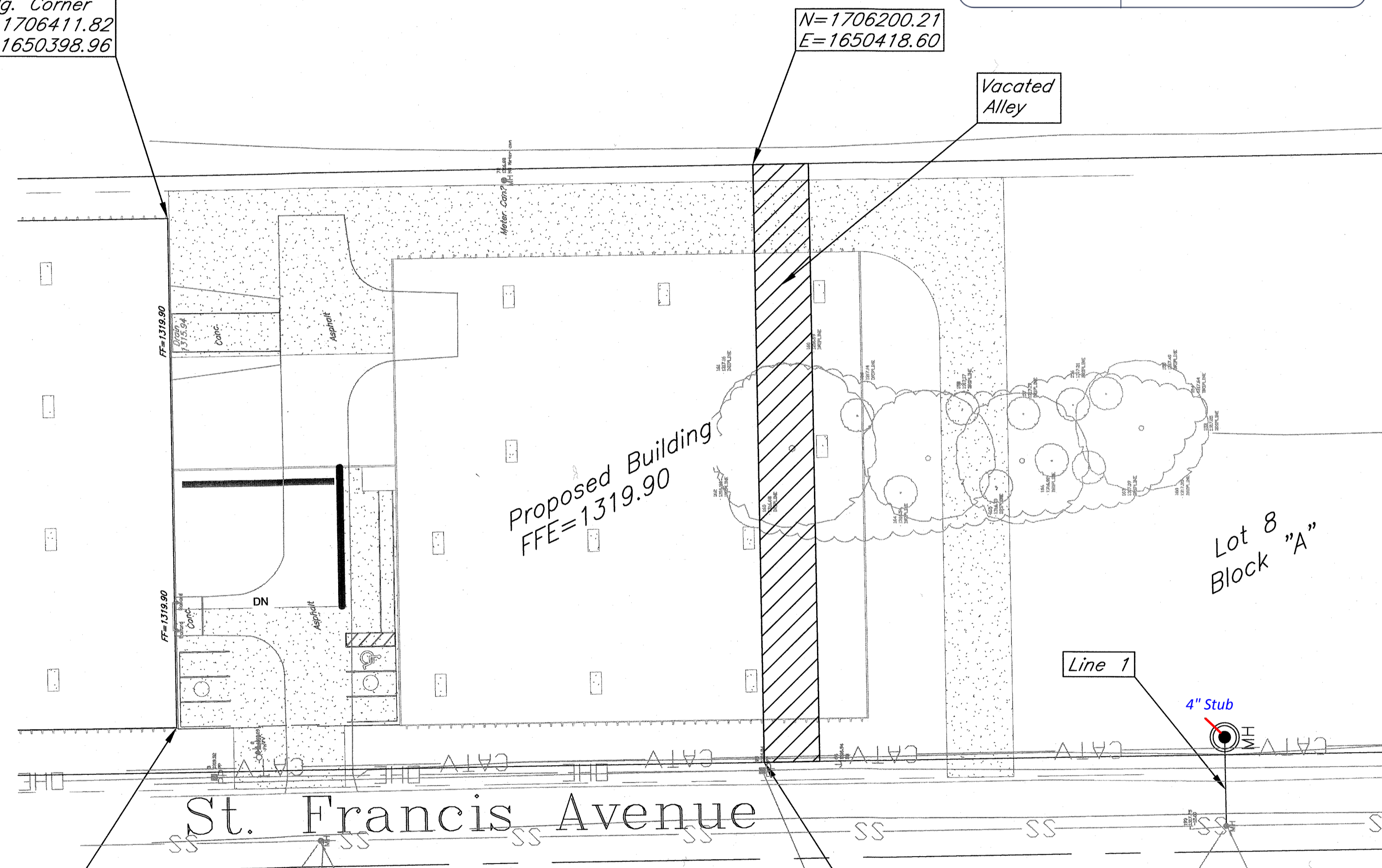
Index of Sheets:

- 1.0 Cover Sheet
- 2.0 Plan and Profile Sheet
- 3.0 Detail Sheet
- 3.1-3.5 Erosion Control BMP Details (attached or available on the City's website)
- 4.0 Plat

Bldg. Corner
N=1706411.82
E=1650398.96

N=1706200.21
E=1650418.60

Vacated
Alley



Proposed Building
FFE=1319.90

Lot 8
Block "A"

Line 1

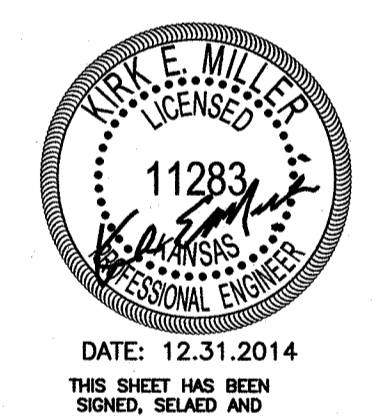
4" Stub

St. Francis Avenue

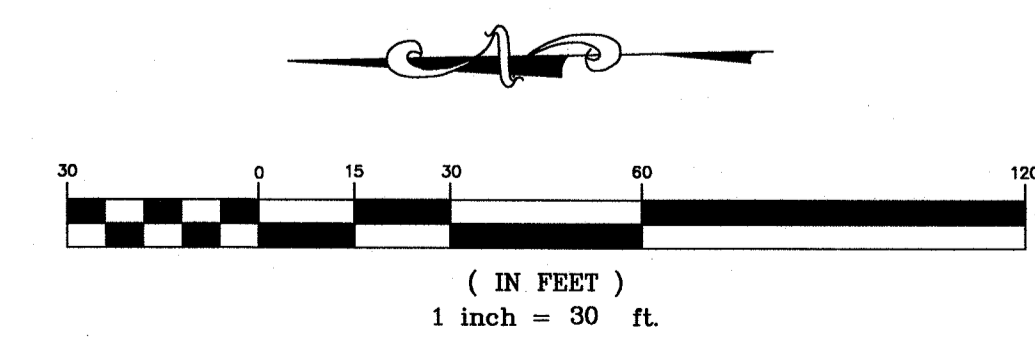
Bldg. Corner
N=1706411.82
E=1650398.96

N=1706196.13
E=1650202.37

Benchmark
Nail set in the asphalt at the southwest corner of driveway turnout approximately 104' south and 49' west of the southeast building corner.
Elevation=1317.09 NAVD 88



APPROVED AS NOTED
City Engineers Office: *Rebecca Duff* 1/11/15
NOTE TO CONTRACTORS
Installation, inspection and testing for this project is to be provided by a Licensed Consulting Engineering Firm under contract with the Owner/Developer. Said inspection to be in accordance with the City of Wichita standard construction engineering practices and certified by a Licensed Professional Engineer in the state of Kansas. No work shall be performed in dedicated easements or public right-of-way by the Contractor without such inspection nor shall any work be commenced without written authorization by the City Engineer. All Construction and Materials shall comply with the City of Wichita Specifications and Standards (on file and available in the City Engineer's Office).



December, 2014

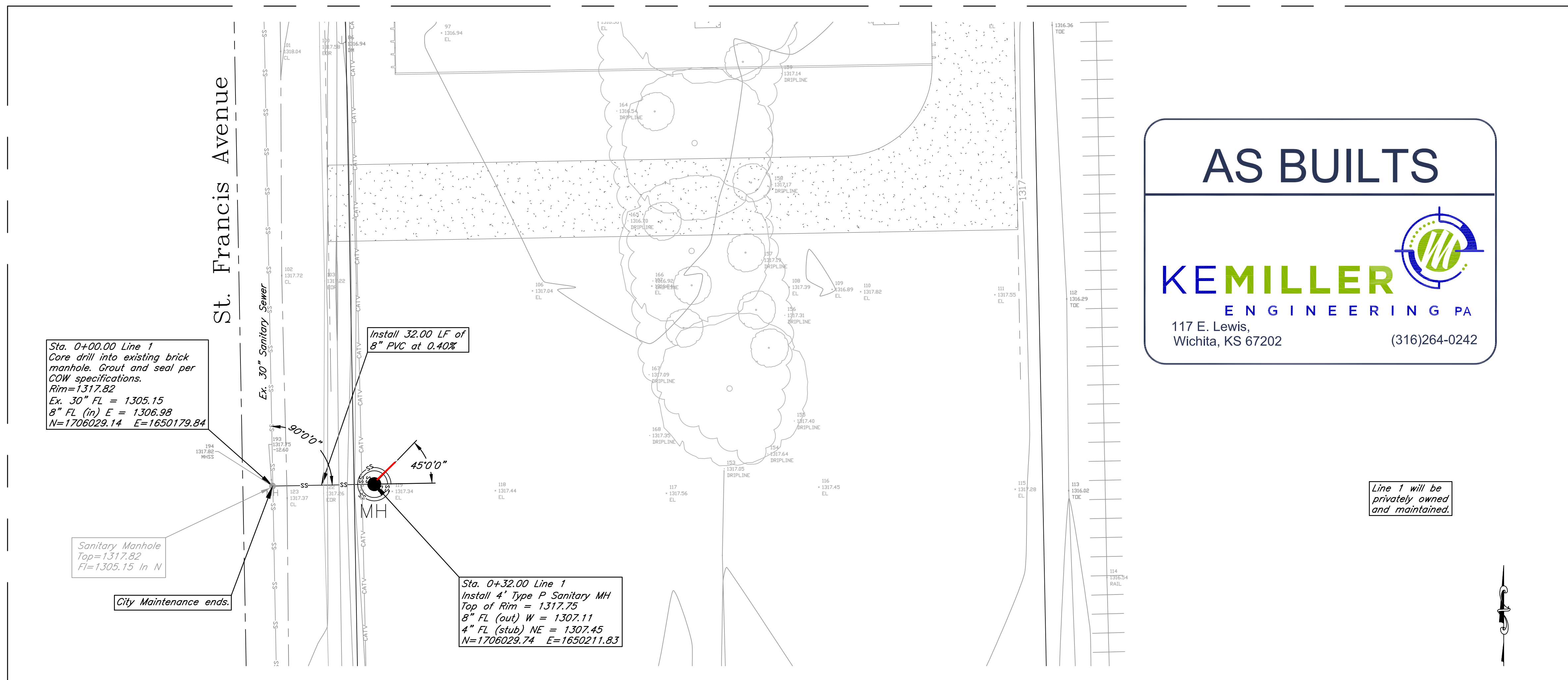
KEMILLER
ENGINEERING PA
117 E. Lewis, Wichita, KS 67202 (316)264-0242

AS BUILTS



KEMILLER
ENGINEERING PA
117 E. Lewis,
Wichita, KS 67202 (316)264-0242

Line 1 will be privately owned and maintained.



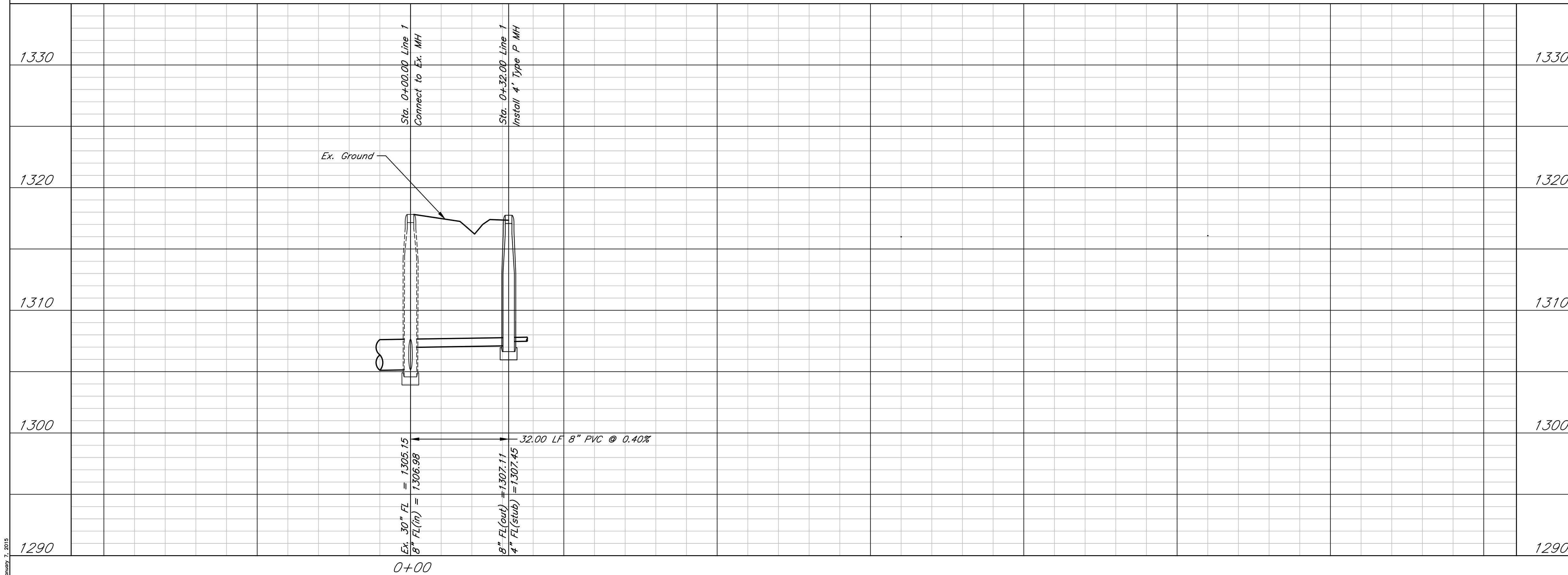
Sta. 0+00.00 Line 1
Core drill into existing brick manhole. Grout and seal per COW specifications.
Rim=1317.82
Ex. 30" FL = 1305.15
8" FL (in) E = 1306.98
N=1706029.14 E=1650179.84

Install 32.00 LF of 8" PVC at 0.40%

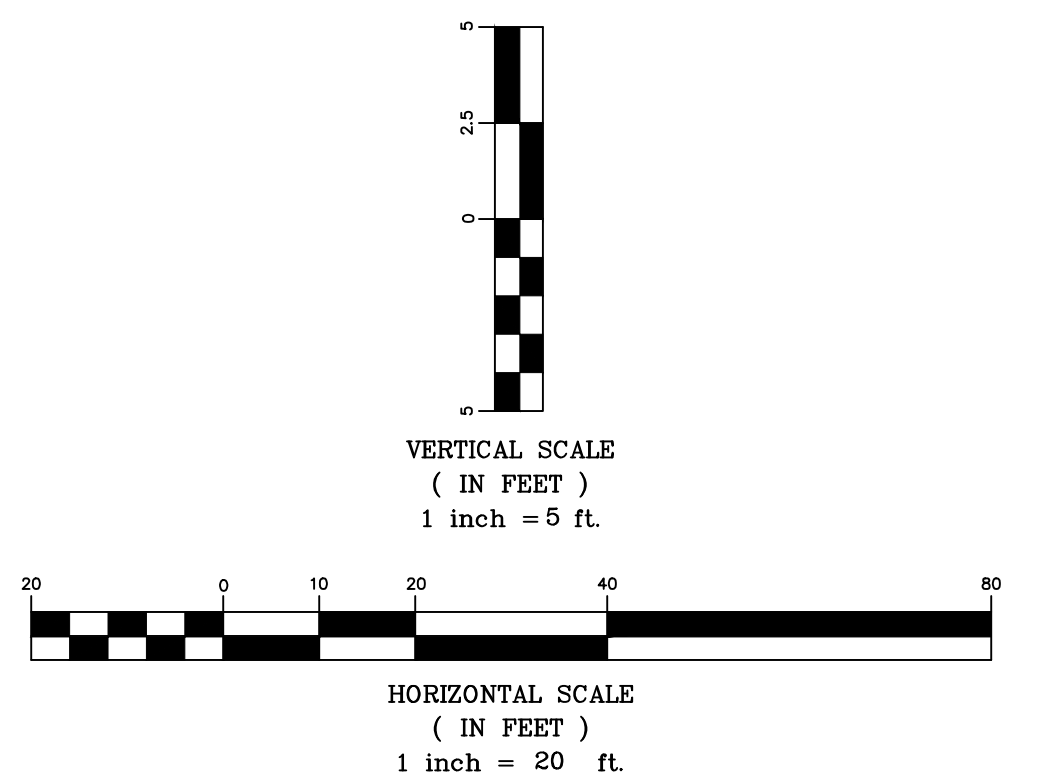
Sta. 0+32.00 Line 1
Install 4" Type P Sanitary MH
Top of Rim = 1317.75
8" FL (out) W = 1307.11
4" FL (stub) NE = 1307.45
N=1706029.74 E=1650211.83

Sanitary Manhole
Top=1317.82
FL=1305.15 in N


City Maintenance ends.



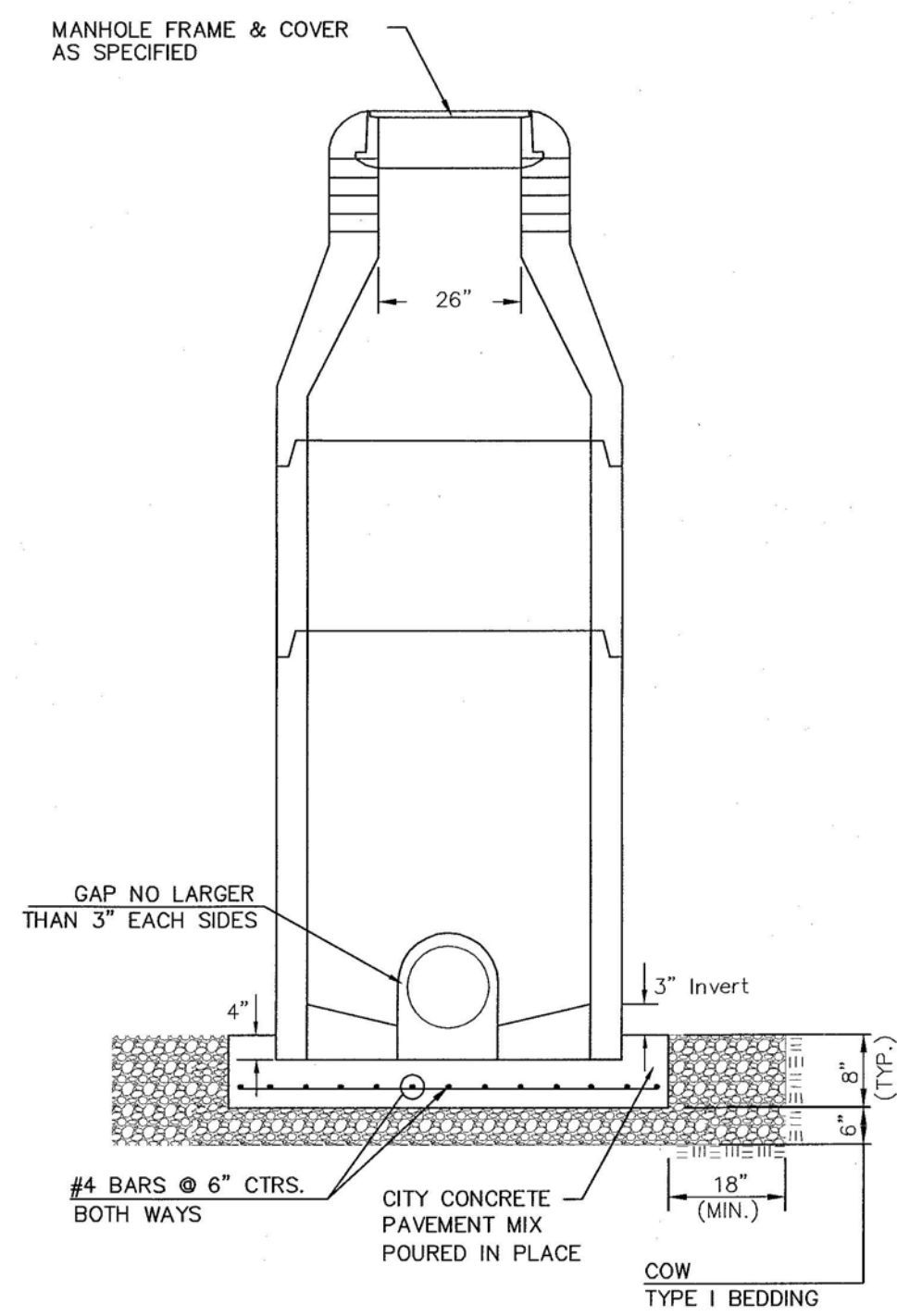
DATE: 12.31.2014
THIS SHEET HAS BEEN SIGNED, SEALED AND DATED ELECTRONICALLY



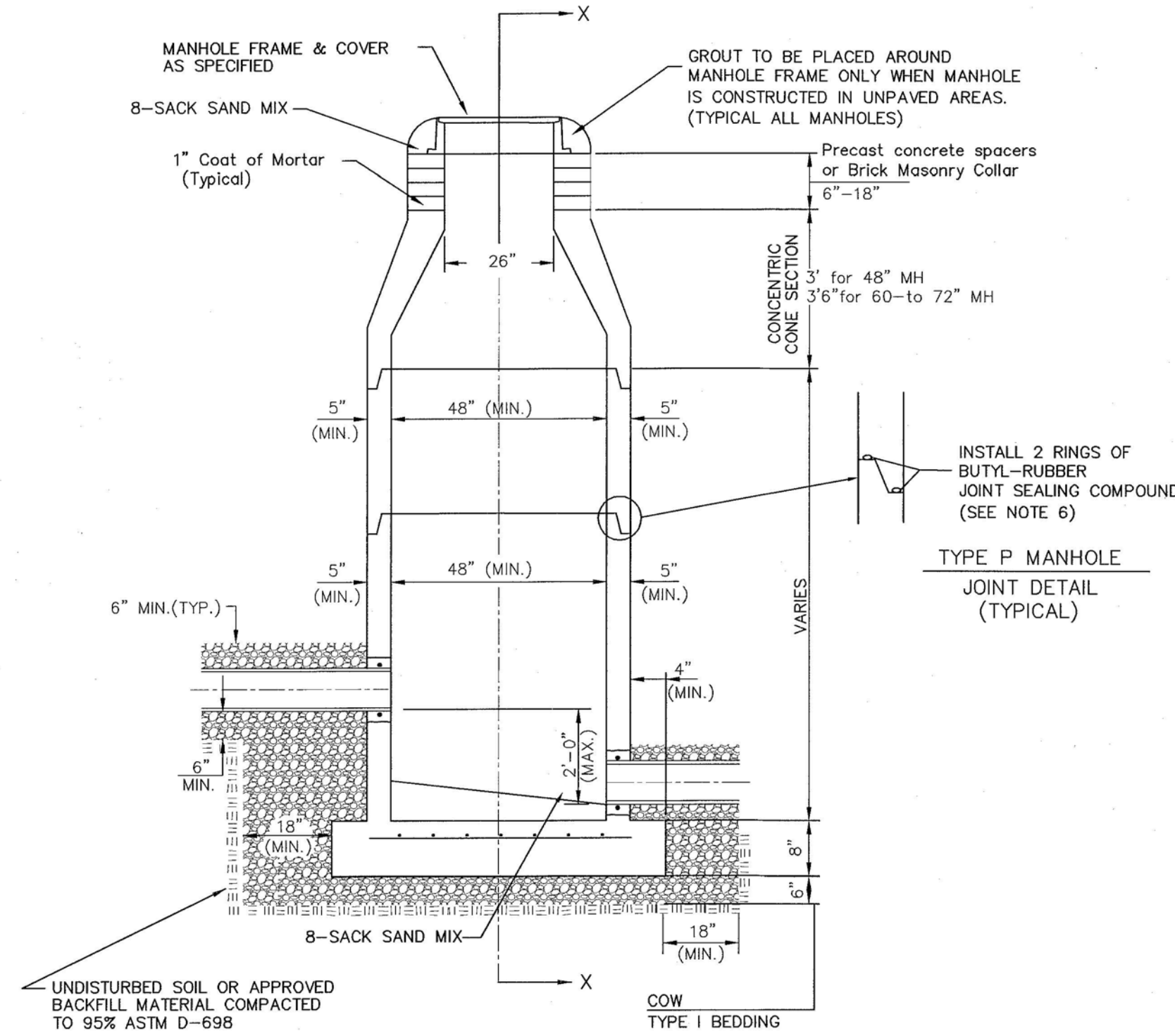
Underground Vaults & Storage
Plan and Profile
Wichita, Kansas

 117 E. Lewis, Wichita, KS 67202 (316)264-0242	PROJECT NUMBER 2221 PPS (607861)			SHEET 2.0
	KEM NO. 14167	FILE	DATE 12/2014	
DESIGN KM	DRAWN MP	REVISED		

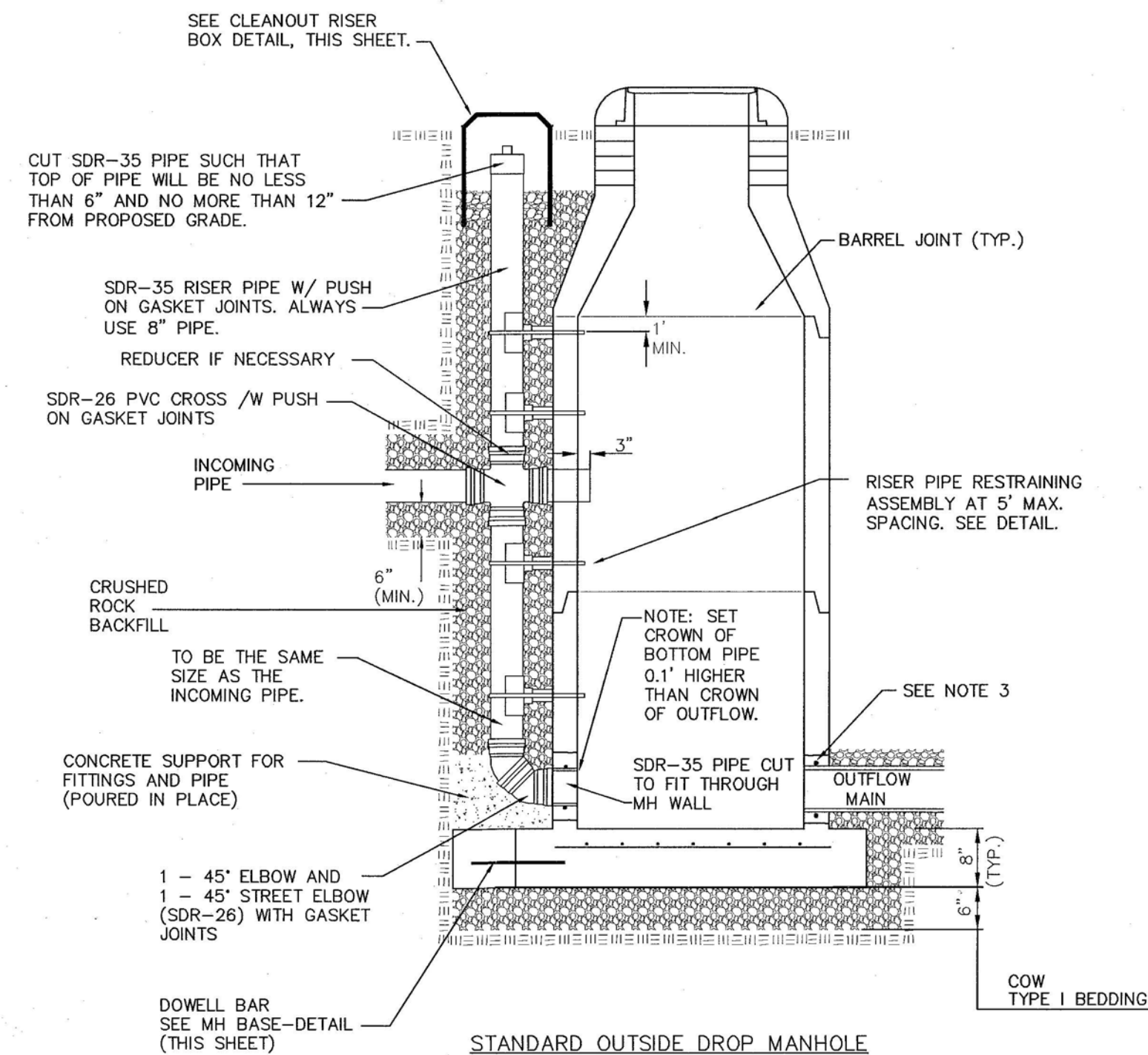
January 7, 2015



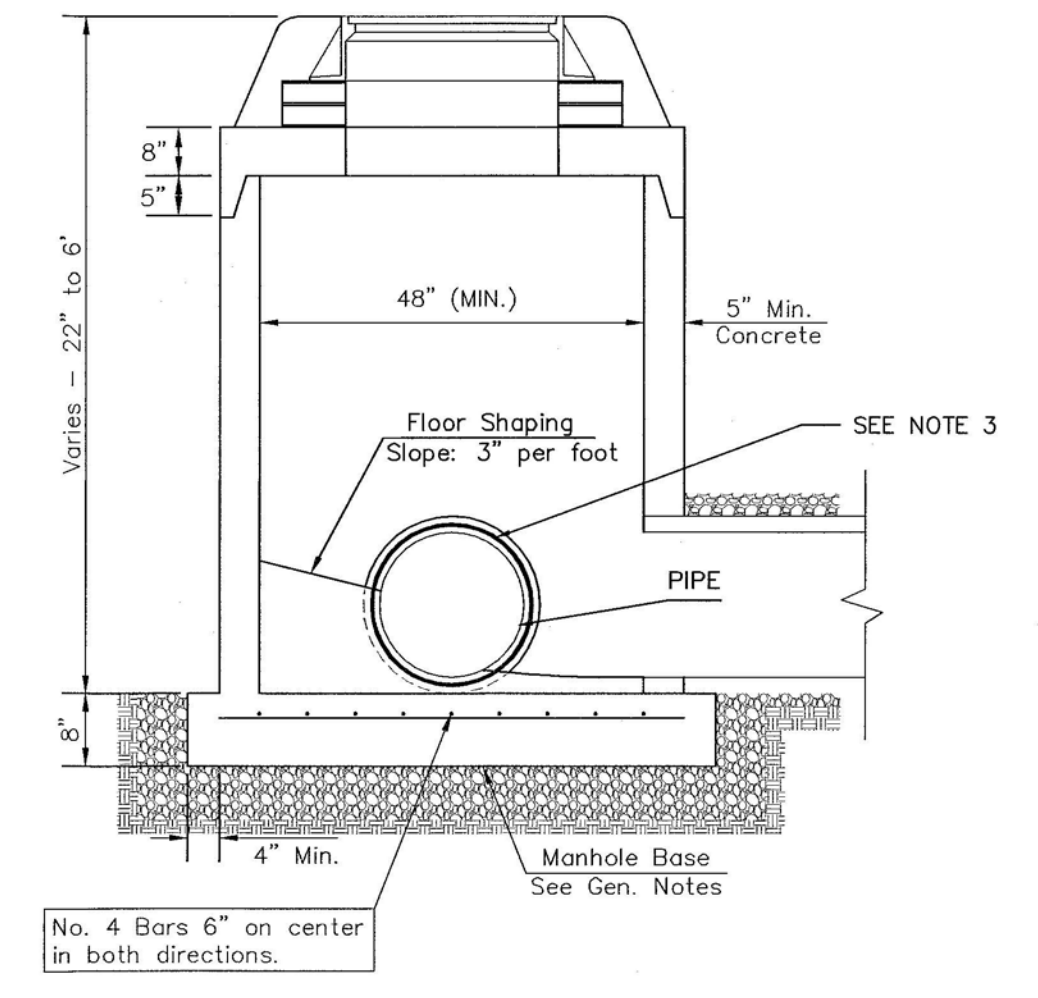
DOG HOUSE MANHOLE
(OVER EXISTING PIPE)
Not to Scale



STANDARD MANHOLE
Not to Scale



STANDARD OUTSIDE DROP MANHOLE
Not to Scale

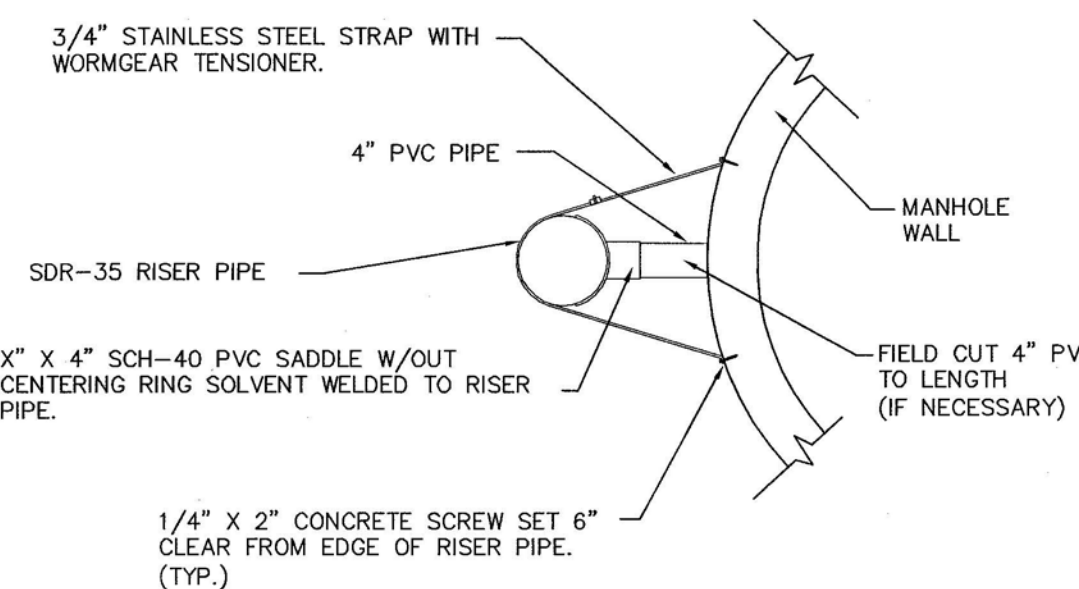


SHALLOW MANHOLE
Not to Scale

= COW TYPE I BEDDING
 = UNDISTURBED SOIL

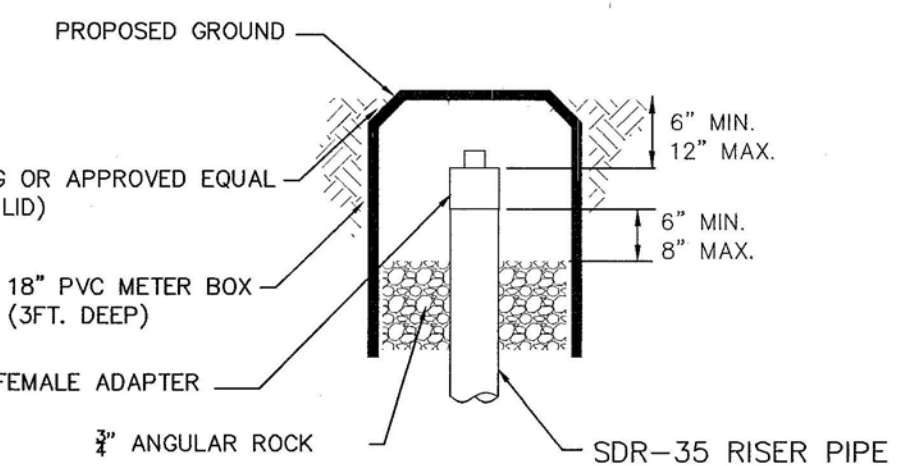
PRECAST MANHOLE GENERAL NOTES

- ALL PRECAST CONCRETE MANHOLE SECTIONS SHALL CONFORM TO THE LATEST REVISIONS OF A.S.T.M. C478 AS MODIFIED BY THE SPECIFICATIONS.
- NON-SHRINK GROUT SHALL BE NON-METALLIC TYPE.
- APPROVED FLEXIBLE WATERSTOP SHALL BE INSTALLED TO JOIN THE SEWER PIPE TO THE MANHOLE WALL. THE SEWER PIPE SHALL BE SUPPORTED WITH CRUSHED ROCK A MINIMUM OF 3 FEET FROM THE MANHOLE WALL AND TO THE FIRST JOINT FOR V.C.P. SUCH THAT THE JOINT REMAINS FLEXIBLE.
- ALL INSIDE SURFACES OF THE CONCRETE MANHOLE WHICH WOULD BE EXPOSED TO SEWER GAS SHALL BE COATED PER SECTION 804.4 OF STANDARD SPECIFICATIONS.
- EXTERIOR MANHOLE WALLS SHALL BE COATED PER SECTION 804.4 OF STANDARD SPECIFICATIONS.
- JOINT SEALING COMPOUND SHALL BE PER 804.4 OF STANDARD SPECIFICATIONS.
- ALL MANHOLE SECTION JOINTS THAT WILL BE IN GROUNDWATER OR GREATER THAN 12' DEEP SHALL BE WRAPPED WITH AN EXTERNAL JOINT SEAL PER SECTION 804.4 OF STANDARD SPECIFICATIONS, AS INDICATED BY THE PLANS.
- PRECAST MANHOLES SHALL BE SET AT LEAST 4 INCHES INTO THE MANHOLE BASE FOR DOG HOUSE MANHOLES.
- TOP OF MANHOLE FLOOR SLAB SHALL BE AT LEAST 3 INCHES BELOW THE FLOW LINE OF THE OUTLET PIPE TO INSURE SUFFICIENT MINIMUM THICKNESS OF SHAPED INVERT.
- LIFTING HOLES SHALL BE FILLED WITH NON-SHRINK GROUT AND THE INTERIOR SURFACE COATED AS SPECIFIED.
- MORTAR USED IN MASONRY CONSTRUCTION SHALL CONTAIN 8 SACKS OF CEMENT PER CUBIC YARD. CONCRETE USED IN MANHOLE BASES SHALL CONFORM TO THE REQUIREMENTS OF CONCRETE FOR CONCRETE PAVEMENT CONSTRUCTION AS SPECIFIED IN THE CITY STANDARD PAVING SPECIFICATIONS USING CITY CONCRETE PAVEMENT MIX WITHOUT AIR ENTRAINING ADMIXTURE. MORTAR SHALL BE PLACED AROUND THE MANHOLE RING AS SHOWN ON THE DRAWINGS WHEN MANHOLES ARE CONSTRUCTED IN UNPAVED AREAS. COMPLETED MANHOLE SHALL BE WITHOUT LEAKS AND WATER TIGHT.
- REINFORCING STEEL SHALL BE INSTALLED IN THE MANHOLE BASES AND SHALL CONSIST OF NO.4 BARS PLACED ON 6" CENTERS IN BOTH DIRECTIONS. THE MANHOLE BASE REINFORCEMENT SHALL BE PLACED AT LEAST 3" ABOVE THE BOTTOM OF THE MANHOLE BASE. ALL COSTS FOR FURNISHING AND INSTALLING REINFORCING STEEL SHALL BE INCLUDED IN THE UNIT PRICE BID FOR THE MANHOLE.
- WALL THICKNESS SHALL BE 1" GREATER THAN MANHOLE DIAMETER IN FEET.
- OPENINGS SHALL BE CORE DRILLED INTO THE MANHOLE WALL WHEN OUTSIDE DROPS ARE CONSTRUCTED ON EXISTING MANHOLES. SUCH OPENINGS DRILLED INTO EXISTING MANHOLES SHALL BE AS SMALL AS PRACTICAL TO FACILITATE INSTALLING AND GROUTING THE NEW PIPE IN PLACE. WATERSTOP GASKETS SHALL BE USED WITH P.V.C. PIPE. THE NEW PIPE SHALL BE GROUTED INTO THE OPENING USING AN APPROVED NONSHRINK GROUT FOR THE FULL MANHOLE WALL THICKNESS. THE EXTERIOR OF THE COMPLETED CONNECTION SHALL BE SEALED WITH AN APPROVED BITUMINOUS COATING SUCH THAT THE CONNECTION WILL BE WATER TIGHT. FLOOR OF MANHOLE SHALL BE MODIFIED TO FORM NEW FLOW CHANNEL FOR THE NEW CONNECTION AS INDICATED BY THE DRAWING. THIS WORK, INCLUDING MODIFICATION OF MANHOLE FLOOR, SHALL BE PAID FOR AT THE UNIT PRICE BID FOR OUTSIDE DROP STACK CONSTRUCTED ON EXISTING MANHOLE.
- THE FLOORS OF ALL MANHOLES SHALL BE SHAPED WITH FLOW CHANNELS SUCH THAT THE MANHOLES WILL BE SELF-CLEANING AND FREE OF AREAS WHERE SOLIDS COULD BE DEPOSITED AS SEWAGE FLOWS THROUGH THE MANHOLE FROM ALL INLET PIPES TO THE OUTLET PIPE. FLOW CHANNELS SHALL BE FORMED TO MATCH THE BOTTOM HALVES OF THE INFLOWING PIPES AND THE OUTFLOWING PIPE AS SHOWN BY THE DRAWINGS. MANHOLE FLOORS SHALL HAVE SLOPES OF 3 INCHES PER FOOT IN THE AREAS OUTSIDE OF THE FLOW CHANNELS SLOPED TOWARD THE FLOW CHANNELS. PIPES LAID THROUGH MANHOLES SHALL HAVE THE TOP HALF REMOVED TO NEAT LINES FOR THE FULL INSIDE DIAMETER OF THE MANHOLE. MANHOLE FLOORS SHALL THEN BE SHAPED AROUND THE BOTTOM HALF OF THE PIPE WHICH FORMS THE FLOW CHANNEL.
- MANHOLE COVER CASTINGS AND MANHOLE FRAME CASTINGS SHALL CONFORM TO THE REQUIREMENTS AS INDICATED IN THE STANDARD SPECIFICATIONS AND AS SHOWN IN THE STANDARD DETAIL DRAWING.
- THE VERTICAL DROP IN STANDARD MANHOLES SHALL NOT EXCEED 2' REGARDLESS OF PIPE SIZE. THE CROWNS OF INFLOWING PIPES SHALL NEVER BE SET LOWER THAN THE CROWN OF THE OUTFLOWING PIPE.
- STANDARD MANHOLES SHALL BE BID AS STANDARD MANHOLES FOR THE TYPE AND DIAMETER INDICATED. OUTSIDE DROP MANHOLES SHALL BE BID AS STANDARD OUTSIDE DROP MANHOLES FOR THE TYPE AND DIAMETER INDICATED. ALL MANHOLE DIAMETERS WILL BE 4' UNLESS INDICATED OTHERWISE.
- PRECAST CONCRETE SPACERS OR BRICK MASONRY COLLAR SHALL BE INSTALLED BETWEEN THE CAST IRON FRAME AND THE CONCENTRIC CONE. THE COLLAR WILL HAVE 8" WALLS AND A VERTICAL HEIGHT OF 6" MINIMUM AND 18" MAXIMUM. A 1" COAT OF MORTAR WILL BE PLASTERED ON THE OUTSIDE OF THE COLLAR. THE USE OF PRE-CAST CONCRETE SPACERS FOR MANHOLE TOP ADJUSTMENT IS ALSO ALLOWED.
- THE FULL DIAMETER OF THE MANHOLE SHALL EXTEND THE ENTIRE DEPTH OF THE MANHOLE TO THE CONE SECTION. NO REDUCTION IN MANHOLE DIAMETER WILL BE ALLOWED.
- REFER TO PLANS FOR SIZE OF OUTSIDE DROP RISER, SADDLES AND CROSS.

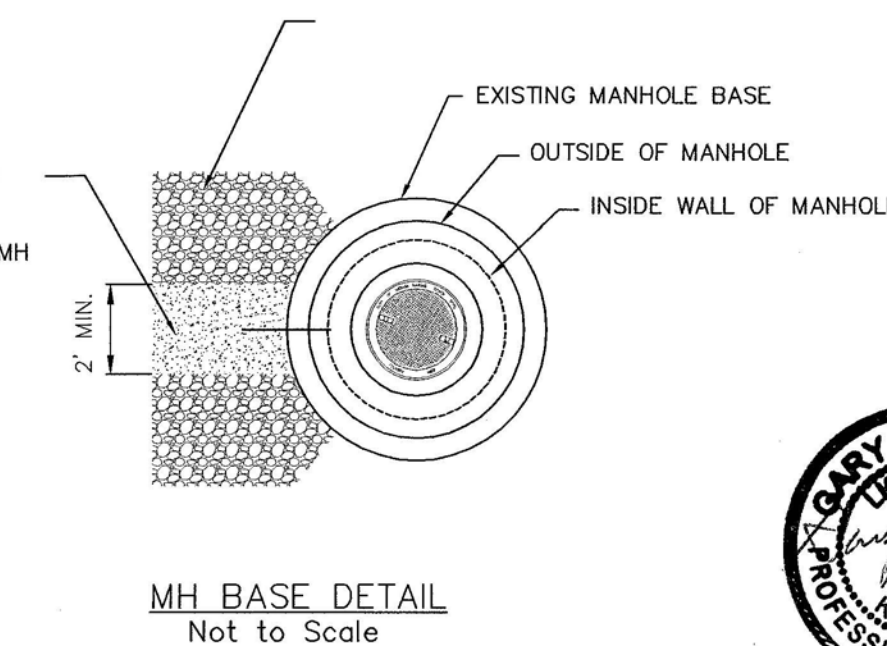


RISER PIPE RESTRAINING ASSEMBLY
Not to Scale

SANITARY SEWER MANHOLE DIAMETERS		
DIAMETER	DEPTH	PIPE SIZE
4'	0'-15'	8"-18"
5'	15'-30'	21"-30"
6'	>30'	36"-60"



CLEANOUT RISER BOX DETAIL
Not to Scale



MH BASE DETAIL
Not to Scale



CITY OF WICHITA
PUBLIC WORKS & UTILITIES
ENGINEERING DIVISION

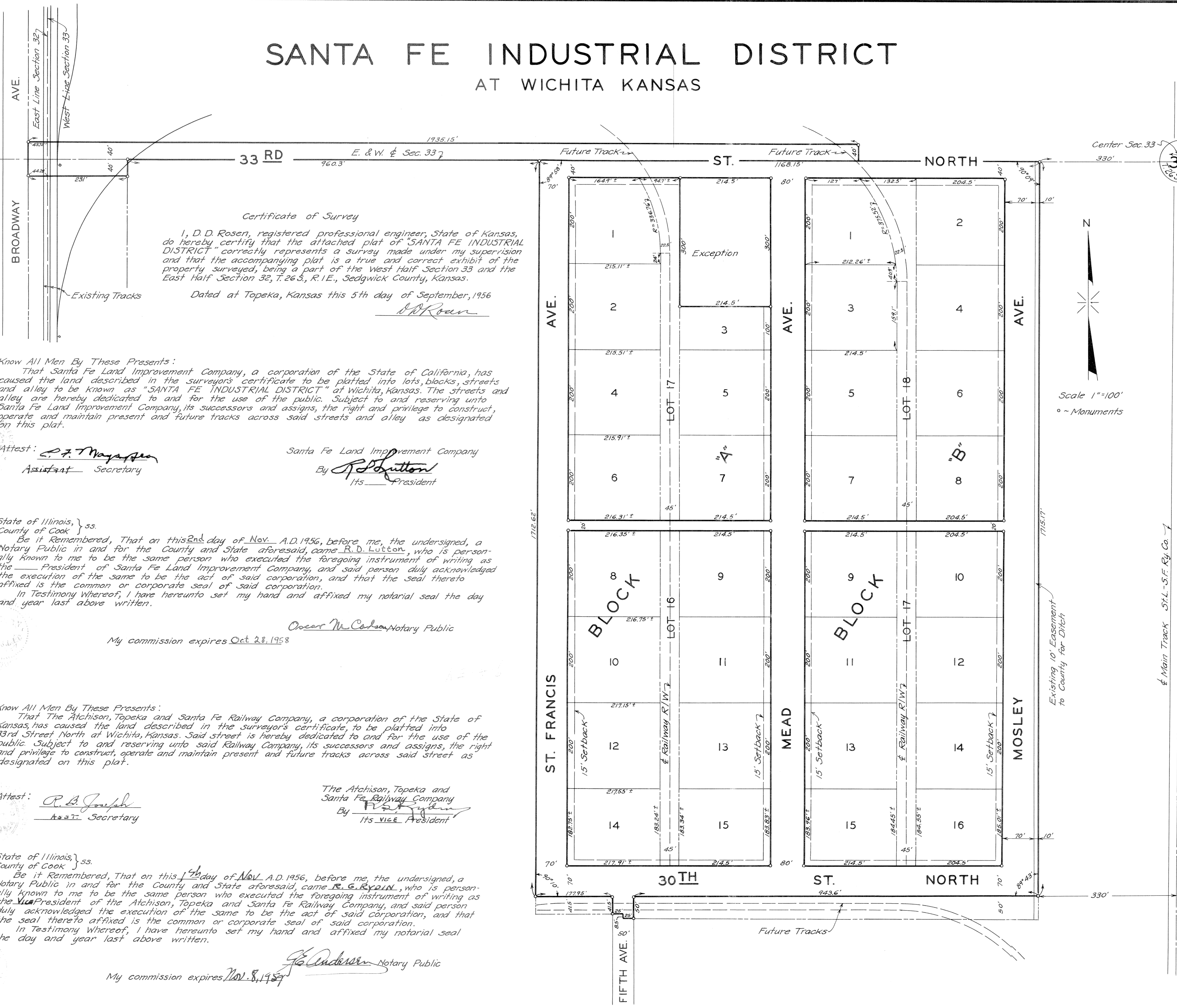
PRECAST SANITARY SEWER MANHOLE
CITY ENGINEER
GARY JANZEN, P.E.

PROJECT NUMBER: OCA NUMBER: DATE:

CITY ENGINEER'S OFFICE
CITY HALL - SEVENTH FLOOR
455 NORTH MAIN STREET
WICHITA, KANSAS 67202-1620
(316) 268-4501

SHEET
3.0

SANTA FE INDUSTRIAL DISTRICT AT WICHITA KANSAS



Certificate of Survey

I, D.D. Rosen, registered professional engineer, State of Kansas, do hereby certify that the attached plat of "SANTA FE INDUSTRIAL DISTRICT" correctly represents a survey made under my supervision and that the accompanying plat is a true and correct exhibit of the property surveyed, being a part of the West Half Section 33 and the East Half Section 32, T. 26 S., R. 1 E., Sedgwick County, Kansas.

Dated at Topeka, Kansas this 5th day of September, 1956

D.D. Rosen

Know All Men By These Presents:
That Santa Fe Land Improvement Company, a corporation of the State of California, has caused the land described in the surveyor's certificate to be platted into lots, blocks, streets and alley to be known as "SANTA FE INDUSTRIAL DISTRICT" at Wichita, Kansas. The streets and alley are hereby dedicated to and for the use of the public. Subject to and reserving unto Santa Fe Land Improvement Company, its successors and assigns, the right and privilege to construct, operate and maintain present and future tracks across said streets and alley as designated on this plat.

Attest: *P. T. Mayhew*
Assistant Secretary

Santa Fe Land Improvement Company
By *R. D. Lutton*
Its President

State of Illinois, } ss.
County of Cook }
Be it Remembered, That on this 2nd day of Nov. A.D. 1956, before me, the undersigned, a Notary Public in and for the County and State aforesaid, came R. D. Lutton, who is personally known to me to be the same person who executed the foregoing instrument of writing as the President of Santa Fe Land Improvement Company, and said person duly acknowledged the execution of the same to be the act of said corporation, and that the seal thereto affixed is the common or corporate seal of said corporation.

In Testimony Whereof, I have hereunto set my hand and affixed my notarial seal the day and year last above written.

Oscar M. Carlson Notary Public
My commission expires Oct. 28, 1958

Know All Men By These Presents:
That The Atchison, Topeka and Santa Fe Railway Company, a corporation of the State of Kansas, has caused the land described in the surveyor's certificate, to be platted into 33rd Street North at Wichita, Kansas. Said street is hereby dedicated to and for the use of the public. Subject to and reserving unto said Railway Company, its successors and assigns, the right and privilege to construct, operate and maintain present and future tracks across said street as designated on this plat.

Attest: *R. B. Joseph*
Assistant Secretary

The Atchison, Topeka and Santa Fe Railway Company
By *Frank J. ...*
Its Vice President

State of Illinois, } ss.
County of Cook }
Be it Remembered, That on this 1st day of Nov. A.D. 1956, before me, the undersigned, a Notary Public in and for the County and State aforesaid, came R. C. Rydell, who is personally known to me to be the same person who executed the foregoing instrument of writing as the Vice President of the Atchison, Topeka and Santa Fe Railway Company, and said person duly acknowledged the execution of the same to be the act of said corporation, and that the seal thereto affixed is the common or corporate seal of said corporation.

In Testimony Whereof, I have hereunto set my hand and affixed my notarial seal the day and year last above written.

R. C. Rydell Notary Public
My commission expires Nov. 8, 1957

This plat of "SANTA FE INDUSTRIAL DISTRICT" at Wichita, Kansas, has been submitted to and considered by the City Planning Commission of the City of Wichita, Kansas, and is hereby transmitted to the Board of Commissioners of the City of Wichita, Kansas, with the recommendation that such plat be approved as proposed.

Dated this 19 day of June, 1956

The City Planning Commission
of the City of Wichita, Kansas
By *John ...*, Chairman
John ..., Secretary

Approved by the Board of City Commissioners
this 26 day of June, 1956

W. ..., Mayor
W. ..., City Clerk

Approved by the Board of County Commissioners
this 31st day of January, 1957

Ed. Schweitzer, County Clerk

Entered on transfer record this 1st day
of February 1957

Ed. Schweitzer, County Clerk

State of Kansas } ss.
County of Sedgwick }

This is to certify that this instrument was filed for record in the Register of Deeds office on the 1st day of Feb., 1957, at 11:10 o'clock, and is duly recorded.

Rufus E. Deering Register of Deeds
Norma Riley, Deputy #3207

Prot. Rest. M386 P. 499
ORDER - VAC. 4426 P. 57