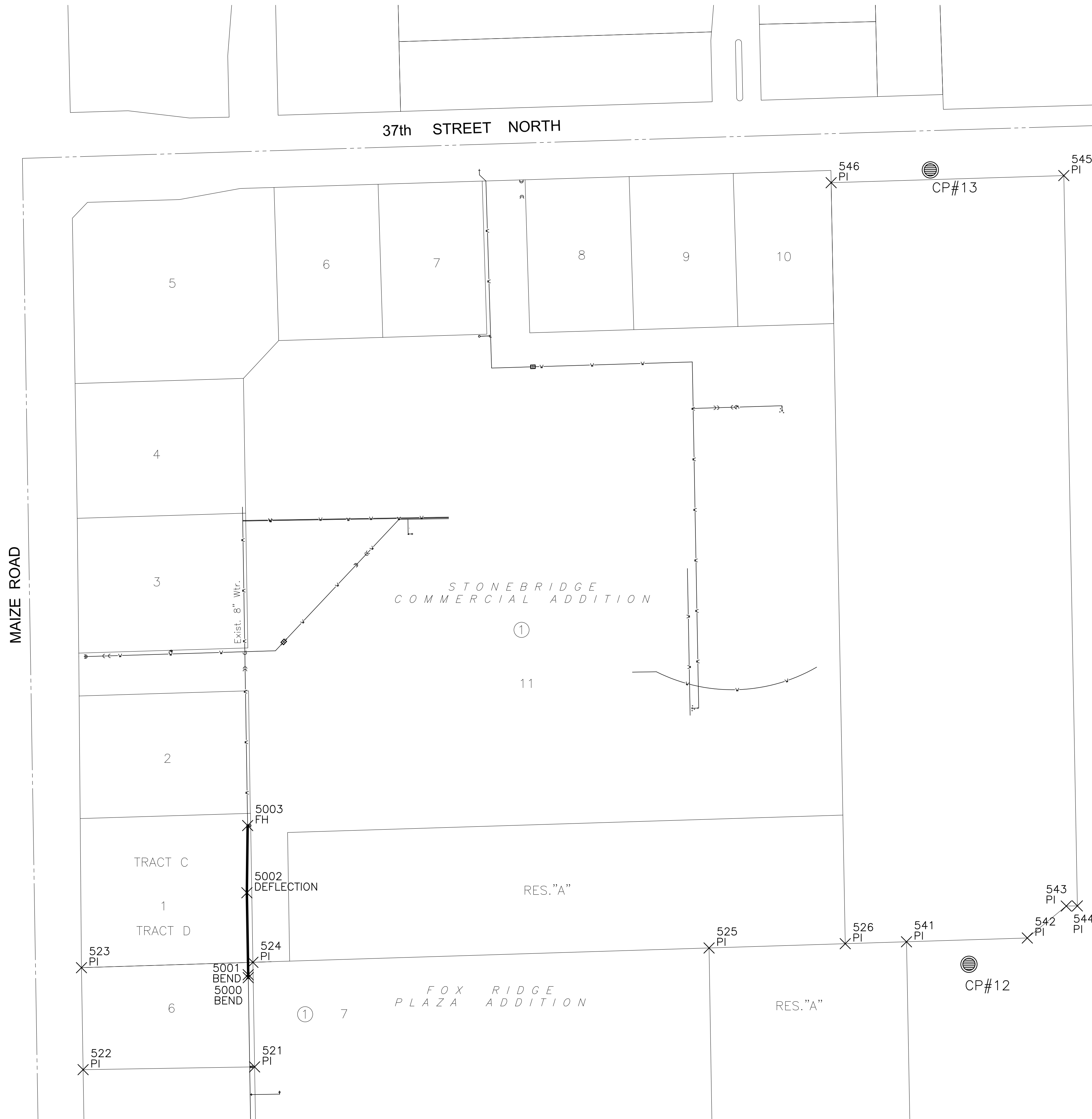


PLOTTEE: Wednesday, April 15, 2015 9:09:20AM



WATER POINTS			
Point #	Northing	Easting	Desc.
5000	1707951.70	1612734.76	BEND
5001	1707956.53	1612734.68	BEND
5002	1708090.30	1612732.52	DEFLECTION
5003	1708199.95	1612733.74	FH

PLAT POINTS			
Point #	Northing	Easting	Desc.
500	1706858.49	1612504.68	PI
501	1706866.67	1612759.72	PI
502	1706892.42	1612783.05	PI
503	1707056.11	1612772.18	PI
504	1707037.56	1612492.80	PI
505	1707197.21	1612482.20	PI
506	1707213.77	1612731.65	PI
507	1707185.83	1612763.57	PI
508	1707301.57	1612755.88	PI
509	1707269.65	1612727.94	PI
510	1707253.09	1612478.49	PI
511	1707341.71	1612472.60	PI
512	1707353.26	1612752.45	PI
513	1707425.53	1612471.25	PI
514	1707430.06	1612751.21	PI
515	1707560.04	1612749.10	PI
516	1707589.55	1612718.62	PI
517	1707585.51	1612468.66	PI
518	1707641.50	1612467.75	PI
519	1707645.55	1612717.72	PI
520	1707676.03	1612747.23	PI
521	1707806.01	1612745.12	PI
522	1707801.48	1612465.16	PI
523	1707967.97	1612462.46	PI
524	1707976.76	1612742.36	PI
525	1708000.13	1613487.08	PI
526	1708007.11	1613709.42	PI
527	1707442.12	1613496.11	PI
528	1707383.98	1613497.05	PI
529	1706891.37	1613529.76	PI
530	1706891.68	1613539.52	PI
531	1706813.72	1613542.02	PI
532	1706753.75	1613543.94	PI
533	1706720.72	1612513.83	PI
534	1706780.62	1612509.85	PI
535	1706879.62	1613640.79	PI
536	1706934.68	1613767.50	PI
537	1706955.42	1613778.35	PI
538	1706998.42	1613781.75	PI
539	1707096.06	1613807.38	PI
540	1707137.95	1613825.56	PI
541	1708010.25	1613809.37	PI
542	1708016.44	1614006.65	PI
543	1708068.60	1614070.21	PI
544	1708068.77	1614088.34	PI
545	1709260.97	1614066.22	PI
546	1709249.35	1613686.37	PI
547	1706645.84	1612518.80	PI

CONTROL POINTS

CP #10
5/8" Rebar with 2" aluminum MKEC CLS 39 cap
N = 1706912.98 E = 1615216.59
2nd round-a-bout east of Maize Rd 23 feet west of flag pole
12 feet NE of sign
Elev.=1358.16 NAVD 88

CP #11
5/8" Rebar with 2" aluminum MKEC CLS 39 cap
N = 1707025.76 E = 1613856.03
1st round-a-bout east of Maize Rd 14 feet west of flag pole
28 feet NNE of sign
Elev.=1357.16 NAVD 88

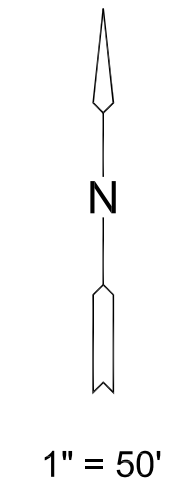
CP #12
5/8" Rebar with 2" aluminum MKEC CLS 39 cap
N = 1707973.54 E = 1613911.40
948 feet north of 1st round-a-bout east of Maize Rd
8 feet south of south edge of asphalt where drive makes a
horseshoe turn 23 feet east of light pole
Elev.=1354.89 NAVD 88

CP #13
5/8" Rebar with 2" aluminum MKEC CLS 39 cap
N = 1709270.20 E = 1613848.29
164 feet east of fence corner at very northeast corner of
Menards property 4 feet east of east edge of concrete drive
on south side of 37th St North 4 feet south of south edge of
sidewalk
Elev.=1354.38 NAVD 88

Horizontal and Vertical Datum:

Horizontal Datum: Kansas Coordinate System 1983 South
Zone. Horizontal coordinates modified to ground using a
scale factor of 1.000120014

Vertical Datum: NAVD 88



EVERY ATTEMPT HAS BEEN MADE TO INSURE ALL COORDINATE VALUES SHOWN ARE AN ACCURATE AND TRUE REPRESENTATION OF THE CURRENT PLANS. ALL VALUES ARE TO BE CONFIRMED WITH THE FINAL SIGNED PLAN SET BEFORE USE.



PRIVATE WATER DISTRIBUTION PLANS FOR
STONEBRIDGE COMMERCIAL ADDITION
TRACT C; TRACT D

©2015 MKEC Engineering All Rights Reserved
www.mkec.com
These drawings and their contents, including, but not limited to, all concepts, designs, & ideas are the exclusive property of MKEC Engineering (MKEC), and may not be used or reproduced in any way without the express consent of MKEC.

BUBBLE MAP

PROJECT NO.	448-90559	
DATE	MARCH 2015	
SCALE	1"=50'	
DESIGNED	DRAWN	CHECKED
DFL	JWC	GJA

NO.	REVISION	DATE

SHEET NO.
4 OF 10

J:\PROJECTS\2015\15010009_COW STONEBRIDGE COMM. 150009 CAD\SHOTS\05 CIVIL\WTR150009_CB-01.DWG