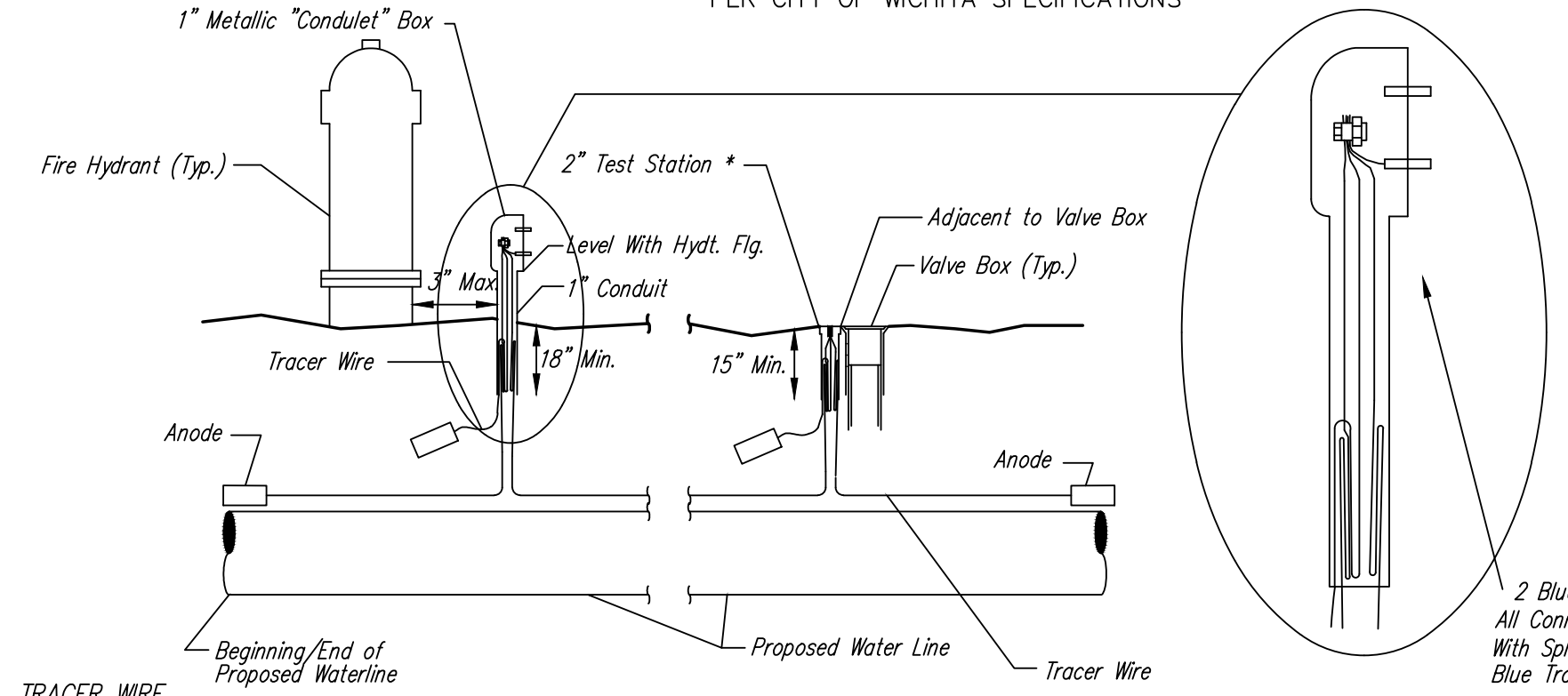


* IF THE REQUIRED HYDRANT BURY IS IN EXCESS OF 5', BUT LESS THAN 7', CONTRACTOR SHALL USE STANDARD 5' HYDRANT BURY AND HYDRANT BARREL EXTENSIONS AS NECESSARY. IF THE REQUIRED HYDRANT BURY IS GREATER THAN 7', CONTRACTOR SHALL USE 5' HYDRANT BURY, 2-MJ 90° BENDS, 6" ANCHOR COUPLING AND 6" DI CL PIPE AS NECESSARY FOR VERTICAL ADJUSTMENT. THE CONTRACTOR SHALL PROVIDE ADEQUATE THRUST BLOCKING AT HYDRANT AND MEGALUGS, OR SIMILAR RESTRAINT BETWEEN 90° BENDS TO SECURE ALL FITTINGS DURING TESTING AND OPERATION. THE CONTRACTOR SHALL PROVIDE A VALVE STEM EXTENSION PER DETAIL THIS SHEET.

** CAUTION: WEEP HOLES TO BE KEPT CLEAR DURING CONSTRUCTION AND BACKFILL. CONCRETE FOR THRUST BLOCKING SHALL NOT OBSTRUCT WEEP HOLES. PLACE 1 CUBIC FOOT OF RIVER WASHED PEA GRAVEL AROUND EACH WEEP HOLE.

CONCRETE THRUST BLOCKING SHALL BE KEPT CLEAR OF BOLTS, NUTS, AND MJ ACCESSORIES.

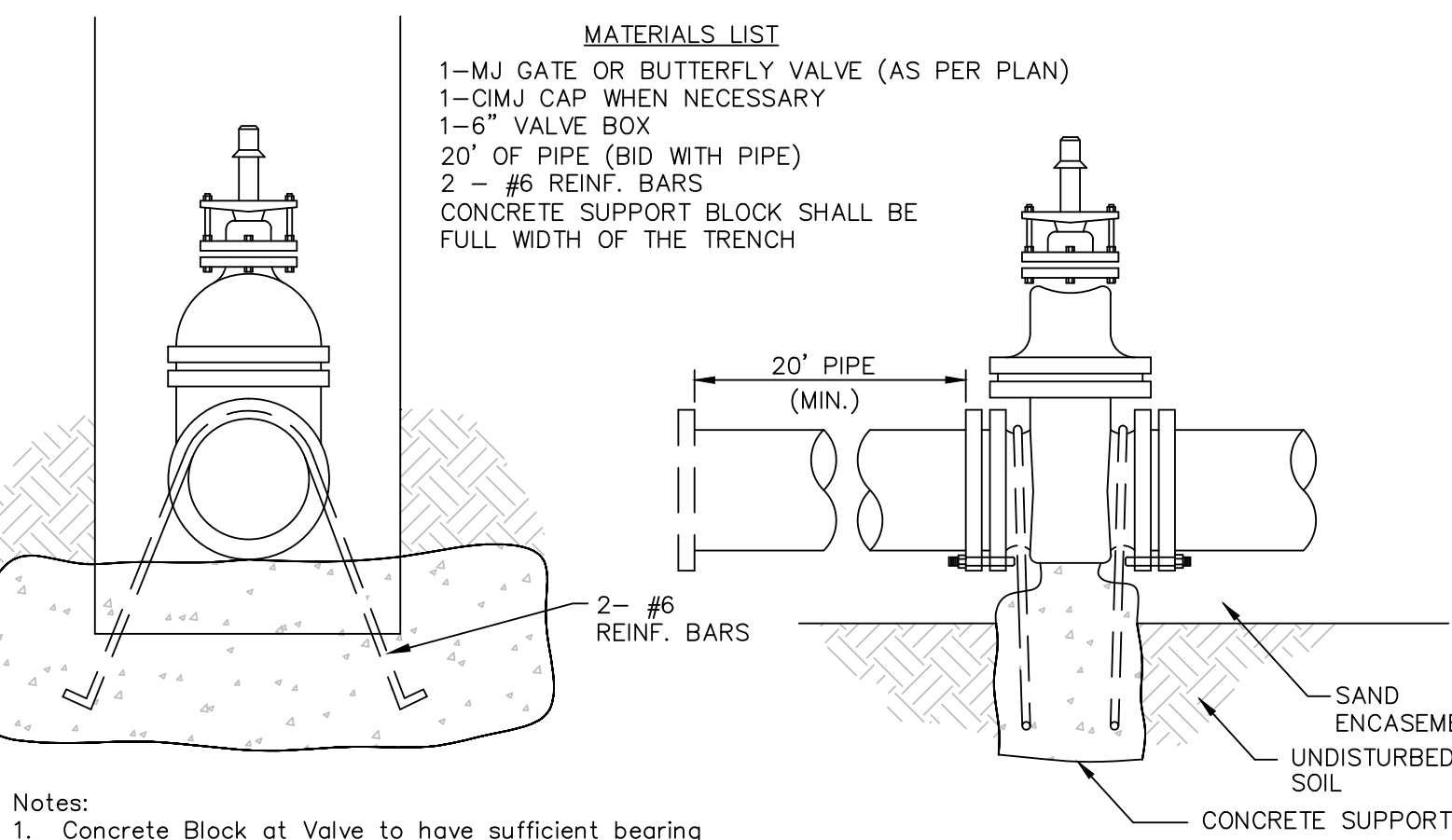
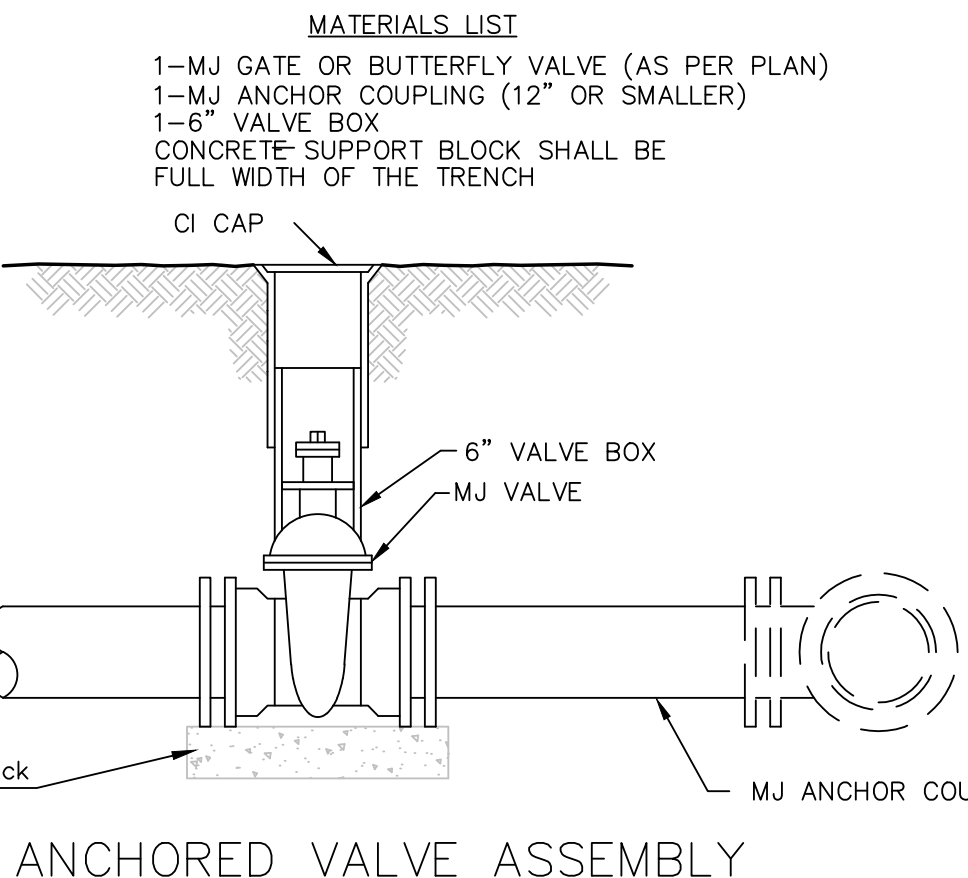
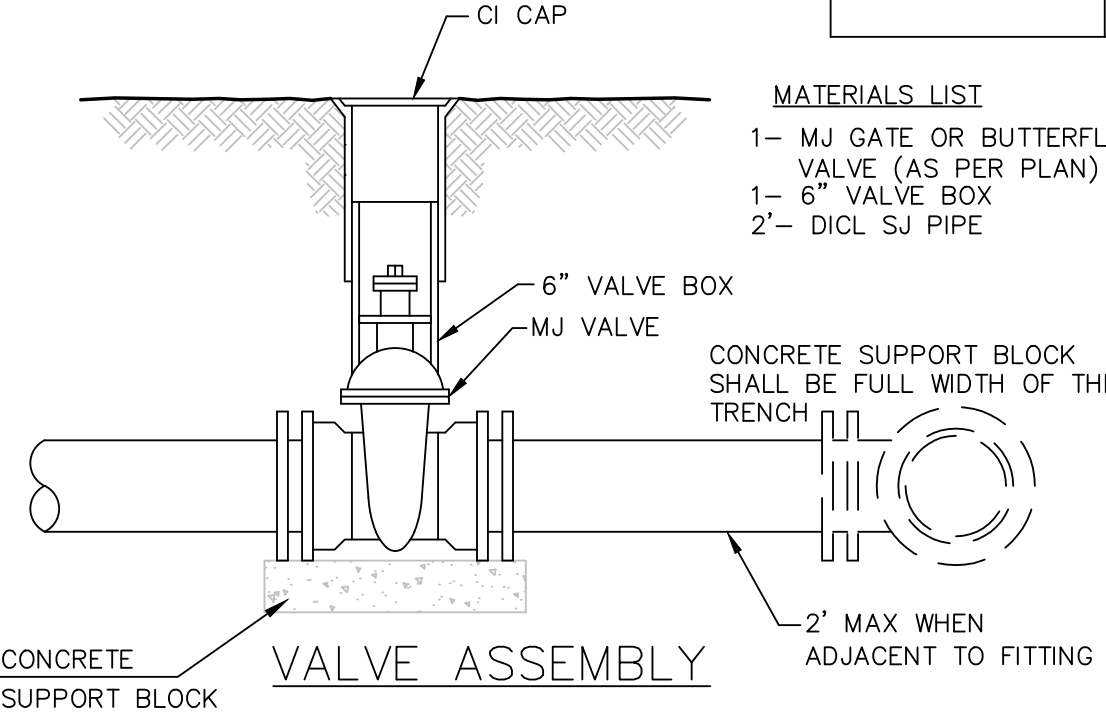
FIRE HYDRANT ASSEMBLY
PER CITY OF WICHITA SPECIFICATIONS



TRACER WIRE DETAIL
COST IS SUBSIDIARY TO PIPE INSTALLATION

FIRE HYDRANTS REQUIRED

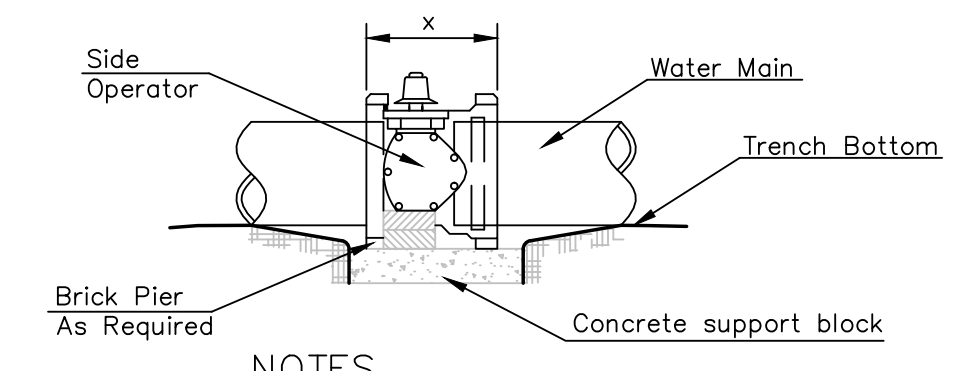
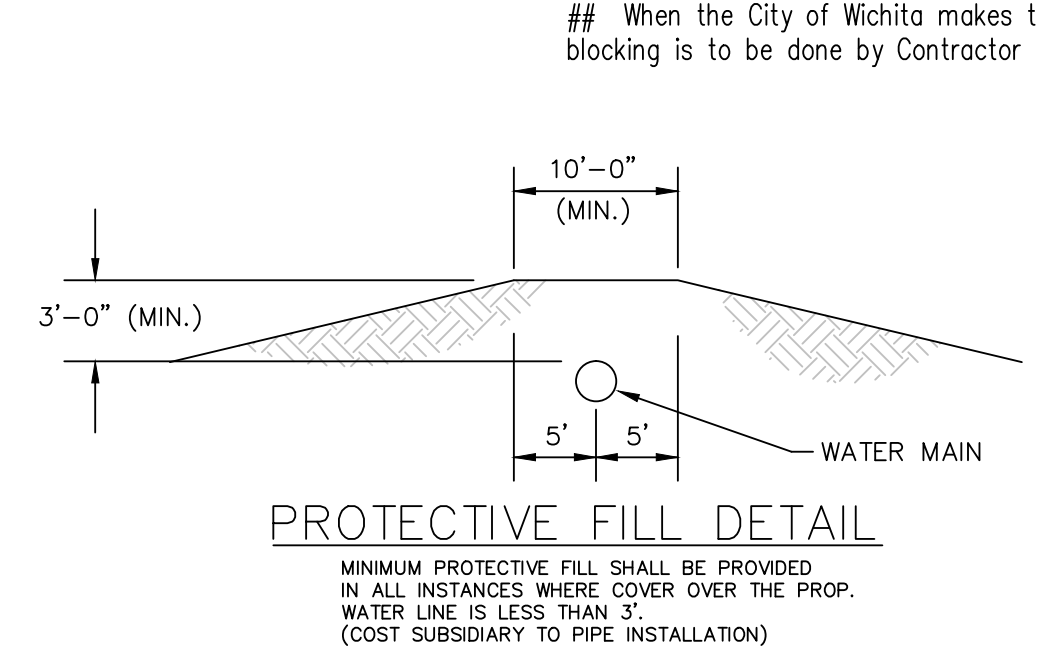
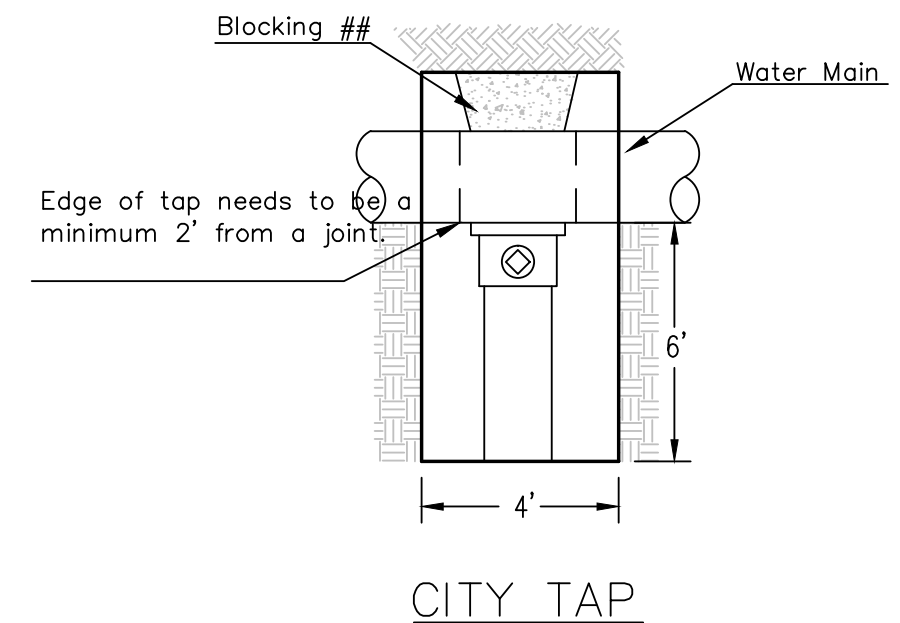
STATION	BURY LINE ELEVATION	TOP OF PIPE ELEVATION	FIRE HYDRANT BURY REQUIRED*	VALVE STEM EXT. REQUIRED (ft)*
0+00 LINE 1	1387.15	1382.7	5.5'	0.5'



THRUST AT VALVES

VALVE	THRUST AT 150 #/sq in
4"	1809 lbs.
6"	4245 lbs.
8"	7540 lbs.
12"	16965 lbs.

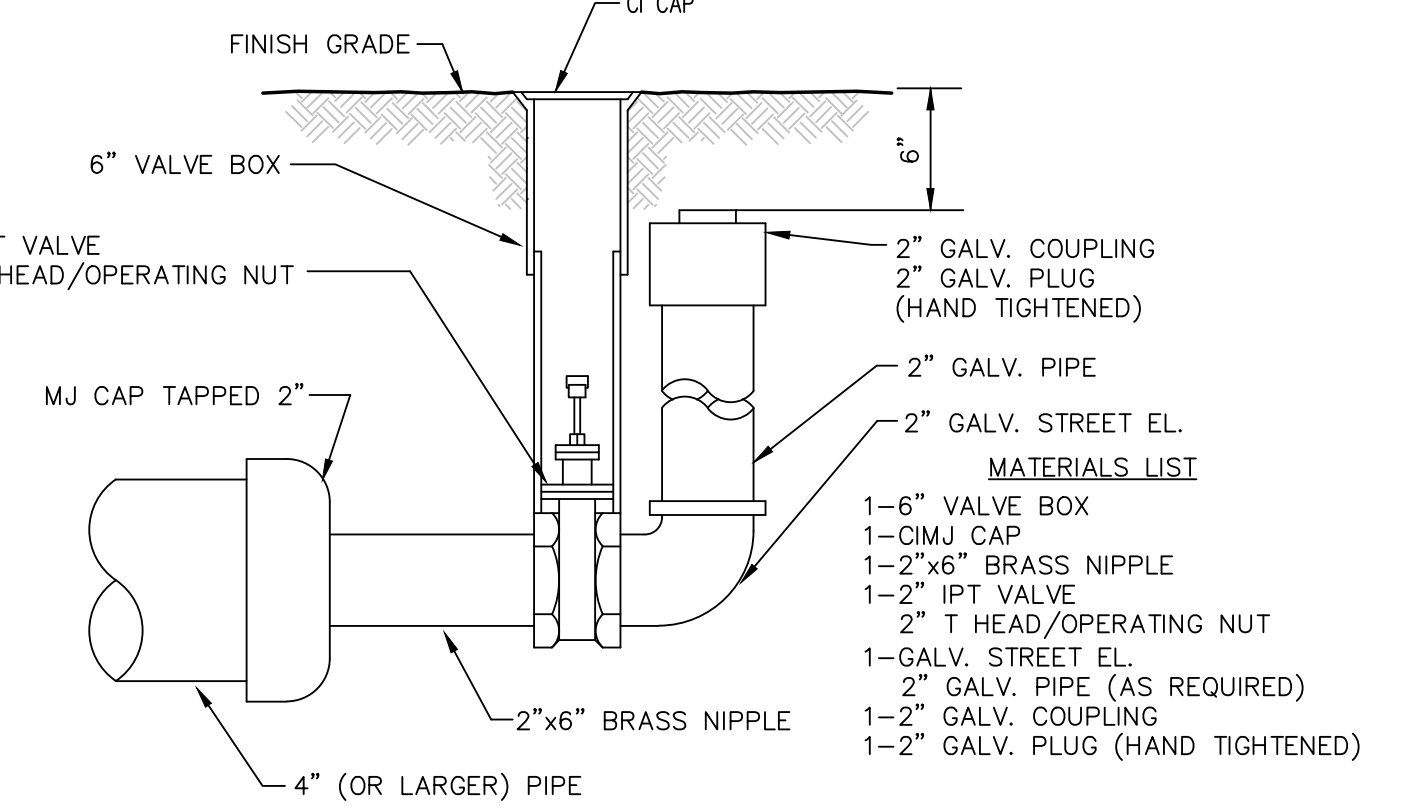
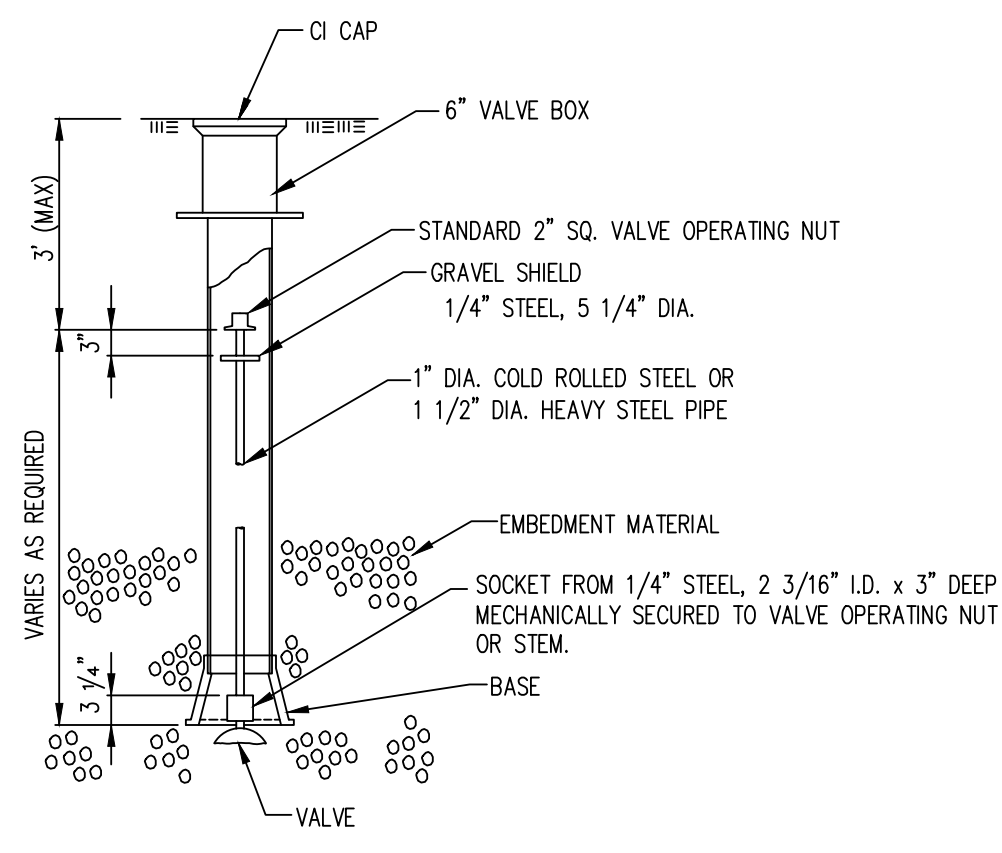
ANCHORED VALVE ASSEMBLY, SPECIAL



NOTES

- This detail covers Butterfly Valve installation, inclusive, regardless of type of pipe or joint used. 24" and larger lines to be detailed on plans.
- 6" Valve Box and Cover required per City of Wichita Std. Specifications.
- Conc. Support Block to be full width of trench.

CONCRETE SUPPORT BLOCKING FOR BUTTERFLY VALVE INSTALLATION



CITY OF WICHITA
PUBLIC WORKS & UTILITIES ENGINEERING DIVISION

STANDARD WATER ASSEMBLY DETAIL

CITY ENGINEER
GARY JANZEN, P.E.

PROJECT NUMBER	OCA NUMBER	DATE
		04/2013

CITY ENGINEER'S OFFICE
CITY HALL - SEVENTH FLOOR
455 NORTH MAIN STREET
WICHITA, KANSAS 67202-1620
(316) 268-4501

SHEET
_ of _



SCOTT R. SERVIS
KANSAS PROFESSIONAL ENGINEER
7/30/14

SCOTT R. SERVIS
ENGINEER
KS # 17874

KAW VALLEY ENGINEERING, INC.
CONSULTING ENGINEERS - LAND SURVEYORS
200 N. EMPORIA, SUITE 100
WICHITA, KANSAS 67202
PH. (316) 268-4509
www.kveng.com

JUNCTION CITY, KS | KANSAS CITY, MO | LIBERIA, KS | LISIUNA, KS | EMPORIA, KS | WICHITA, KS
SERVICES BY KANSAS STATE CERTIFICATE OF AUTHORIZATION # E-11-13.
EXPIRES 12/31/14

FIRE HYDRANT ALONG N. WOODLAWN
1302 N WOODLAWN BLVD
WICHITA, KANSAS

STANDARD WATER CITY DETAILS

PROJ. NO. **G14D0011**

DESIGNER **SRS**

DRAWN BY **MLT**

CFN **0011DET**

SHEET **2 OF 3**

