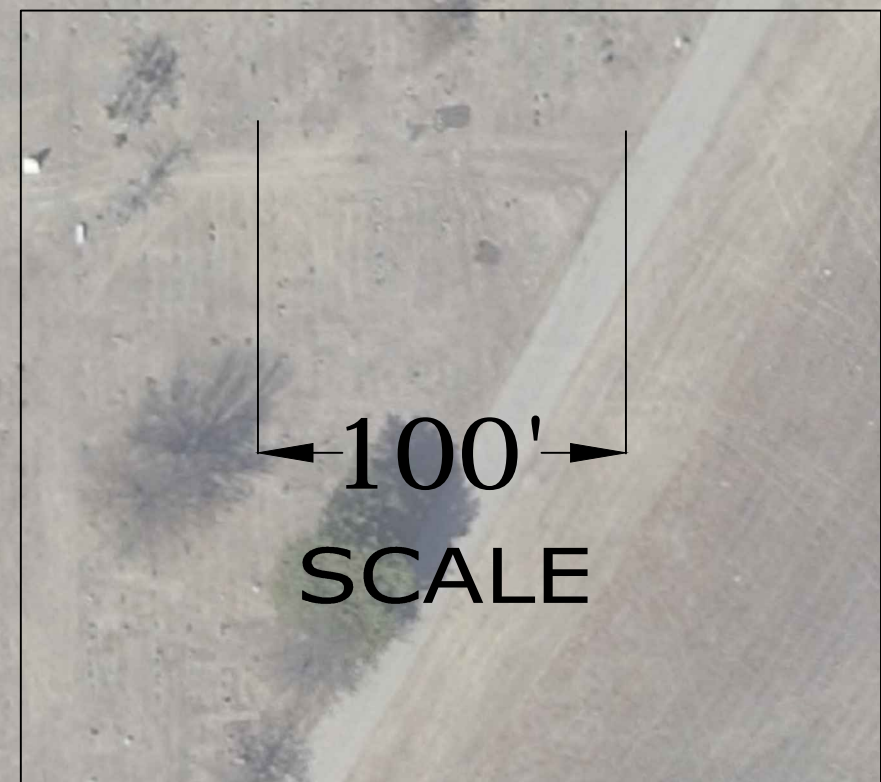
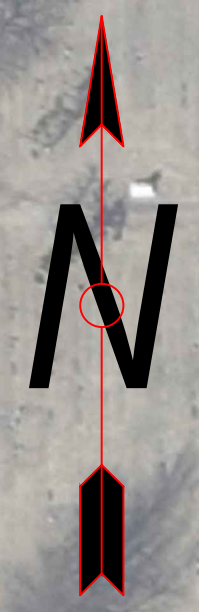


STATE	PROJECT NO.	YEAR
KANSAS	87 TE-0399-01	2014
F.A. NO.	TEA-TO39(901)	



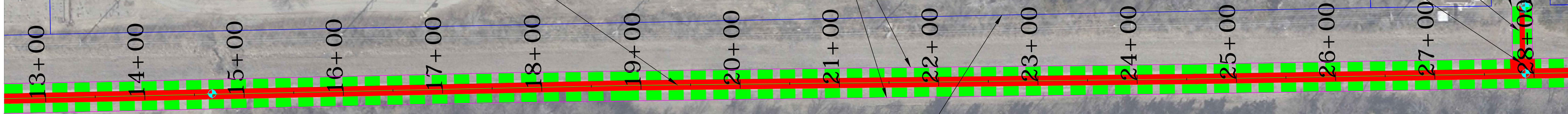
Construct 10' reinforced concrete path (see detail sheet 6)

Construction Limits (15' north of CL & 15' south of CL)

Construct 5' reinforced concrete sidewalk connect bench pad to existing concrete at Edgemoor St.

Construct 10' x 20' reinforced concrete pad with 2 benches. (see detail sheet 6)

Construction Limits (15' east of & 15' west of) CL of Edgemoor



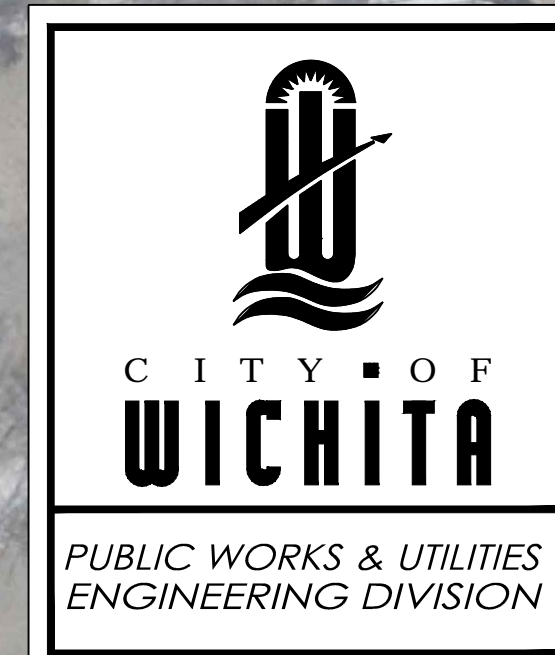
R/W Property Line

CONTROL POINTS :

Point#	Northing	Easting	Elevation	Description
1	1694029.0864823	1670375.3685806	1387.2961246	13th woodlawn corner
2	1699347.0569868	1670302.0748614	1388.4182885	21st woodlawn corner
3	1699248.4280334	1664982.9862752	1405.4458479	21st oliver corner
4	1693940.1174652	1665074.9924177	1396.2431067	13th oliver corner
5	1696593.9568904	1665029.8855208	1408.6644457	17th oliver quarter
100	1696526.2896438	1665055.5720932	1409.1991312	cl path at oliver
101	1696542.0733821	1665406.5691829	1407.9207796	cl path at pi
102	1696559.6181040	1666513.8582273	1407.3109861	cl path at pinecrest
103	1696511.0403332	1666514.9456006	1399.0300426	end conc at pinecrest
104	1696579.9663240	1667837.5574109	1408.7100247	cl path at edgemoor
105	1696647.6010948	1667837.1329621	1406.6629554	edge road at edgemoor
106	1696623.0530537	1670290.6939478	1404.0608364	cl path at bw at woodlawn
107	1696623.3252655	1670303.1535659	1403.0044604	tc at cl path woodlawn
108	1696691.0707514	1670332.3708619	1402.9653837	woodlawn quarter corner
483	1696557.87	1664997.65	1409.07	Oliver 17th southwest corner BENCHMARK

Oliver and 17th Street North	City	221.08	ft	67.384	m
USGS Bench Mark, Stamped P 39 1934, Southwest corner of intersection.	MSL	1408.48	ft	429.303	m
36.00 ft 10.973 m South of centerline					
32.00 ft 9.754 m West of centerline					
2.00 ft 0.610 m South of railroad signal light					
2.00 ft 0.610 m North of traffic signal pole					
CHM 1957					

REVISION DATE: Sept. 2014



REDBUD MULTI-USE PATH
PHASE II
OLIVER to WOODLAWN

CITY ENGINEER
GARY JANZEN, P.E.

PROJECT NUMBER 472-85117	OCA NUMBER 707058	DATE 5/9/2014
-----------------------------	----------------------	------------------

CITY ENGINEER'S OFFICE
CITY HALL - SEVENTH FLOOR
455 NORTH MAIN STREET
WICHITA, KANSAS 67202-1620
(316) 268-4501

SHEET
3 of 9