

GENERAL NOTES:

- The Contractor shall comply with all applicable safety regulations. All construction shall be completed following current City Standard Specifications and Special Provisions.
- Contractor will be required to provide notice to utility companies a minimum of seventy-two (72) hours prior to any excavation, as follows:

Kansas One-Call 687-2470

The Contractor must notify the following in case of an emergency:

AT&T	1-800-246-8464
Black Hills Energy	1-800-694-8989
City of Wichita Water	1-316-268-4555
City of Wichita Sewer	1-316-268-4073
City of Wichita Stormwater	1-316-268-4090
City of Wichita Traffic	1-316-268-4034
Cox Communications	1-888-249-3530
Kansas Gas Service	1-888-482-4950
Westar Energy	1-800-544-4857

- Utility service lines, poles, etc. are to be adjusted as necessary by others prior to construction unless the plans specifically call for their adjustment by the Contractor or unless the plans specifically identify a utility to be adjusted by its owner during construction. Existing utilities and their location, as shown on the plans, represent the best information obtainable for design. The Contractor will be required to work around existing utilities within the right-of-way which do not conflict with proposed construction.

- Rubble from the removal of miscellaneous structures and excess excavation which is to be wasted shall be disposed of on sites to be provided by the Contractor. These sites shall be approved by the Engineer as to suitability, appearance and site location. Locations, in the opinion of the Engineer, that will leave an unsightly appearance will not be approved. All disposal sites must be approved by the Kansas Department of Health and Environment. Material either stockpiled or disposed of in a flood plain would require a Kansas State Board of Agriculture permit. Any material dumped in waters of the United States or wetlands is subject to U.S. Corps of Engineers permitting regulations. Any material buried or stockpiled beyond approved construction limits would require additional archaeological investigations unless buried in a previously approved borrow location.

- Trees and shrubs in public right-of-way which are in direct conflict with proposed new construction shall be removed by the Contractor with the Engineer's approval. Trees and shrubs which are not in direct conflict with proposed new construction shall be saved and protected from damage.

- The Contractor shall give all property owners and/or tenants of developed property abutting the construction of this project a minimum of ten (10) days notice prior to start of construction.

- The Contractor shall be responsible for preserving property irons. The Contractor will be required to re-establish any property irons which are damaged or destroyed by his construction operations. Such irons shall be re-established by a licensed land surveyor in accordance with state laws.

- The Water Distribution Division shall field locate water valve one time during construction when requested by the Contractor. It shall be the Contractor's responsibility to preserve such field locations during the construction process. Water valves, valve boxes or fire hydrants damaged during construction shall be repaired by Contractor at his own expense. Valve boxes and water meters within the project limits shall be adjusted to match field grades.

- The Contractor shall notify the consultant engineer and Tom Mason with the City at 316-268-4574 with the anticipated construction start date and notify them of project completion. Staking and inspection for this project will be the responsibility of the Contractor.

- If traffic is impacted by construction, a traffic control plan must be submitted and approved by the City Traffic Engineer, Brian Coon at traffic@wichita.gov before construction can begin. The Contractor shall be responsible for all traffic control measures to facilitate construction. All construction zone markings and signage shall conform to the latest version of Manual on Uniform Traffic Control Devices (MUTCD) as published by the US Dept. of Transportation, Federal Highway Administration. All costs associated with construction markings and signage shall be the Contractors responsibility.

- All elevations shown are U.S.G.S. Datum (NGVD 88).

- All areas disturbed during construction that will not be under proposed pavement shall be restored to match existing conditions.

- A portion of excess excavated material shall be mounded around manholes which extend more than one (1) foot above the existing ground. Such mound shall be constructed with new development a six (6) foot diameter flat top with 4 to 1 side slopes down to the original ground. The elevation of the flat top of the mound shall be 0.4 foot below the top to the manhole.

- Geotechnical report available upon request.

- Contractor shall limit the extent of trench openings overnight and weekends to less than 50 feet.

- Contractor shall provide positive drainage away from all manhole covers.

- City maintenance of storm sewer ends at right-of-way or easement line.

- Any sidewalk, drive approach, or street pavement removed to construct project must have a pavement cut permit and be replaced by the City contractor. Permits can be obtained by calling 316-268-4501 or 316-268-4480.

- The inspecting firm shall submit to the City Stormwater Maintenance Division a digital copy of the CCTV inspection of the conduits and structures following construction. The digital file format shall be compatible with the City input template. A copy of the template is available upon request at 316-268-4090.

- All existing and proposed erosion control measures including silt fencing, erosion control mat, straw bales, inlet barriers, and const. entrance shall be maintained throughout construction by the contractor and until project is accepted by the City of Wichita. The on-site engineer shall complete weekly reports on the status of erosion control measures. The contractor shall be required to comply with maintenance and/or replacement of erosion control measures as determined by the on-site engineer until project is accepted by City of Wichita. Maintenance and/or replacement of erosion control measures to be paid by L.S. bid item "Site Restoration".

- All excess excavation shall remain on-site and shall be stockpiled or spread at a location determined by the engineer.

- All areas disturbed during construction shall be seeded, mulched, and fertilized as follows (Permanent Seeding):

Seed: Kansas Premium Fescue Blend: 8 lbs./1000 sq. ft.

Mulch: Prairie Hay: 2 tons/acre
Fertilizer: 12-24-12: 850 lbs./acre

All costs associated with seeding, mulching, and fertilizing shall be included in bid item "Seeding". All seeding operations shall conform to City of Wichita Standard Specifications.

- The Contractor shall not begin work on the project until the Project Inspector is assigned and on site. Any work completed without inspection will be required to be uncovered for inspection at the Contractor's expense.

STORM SEWER IMPROVEMENTS

to serve

COMOTARA IND. PARK 2ND LOT 19

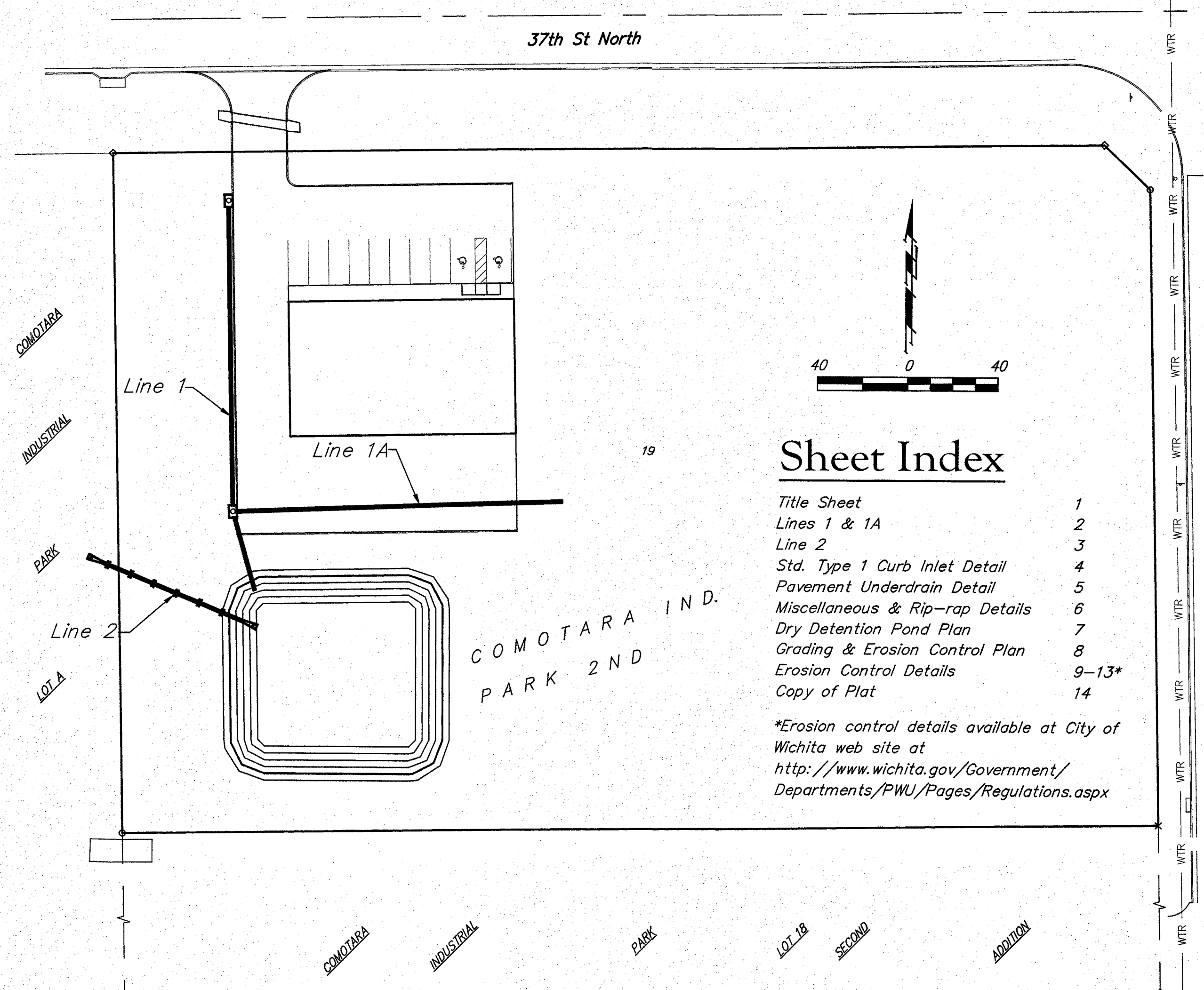
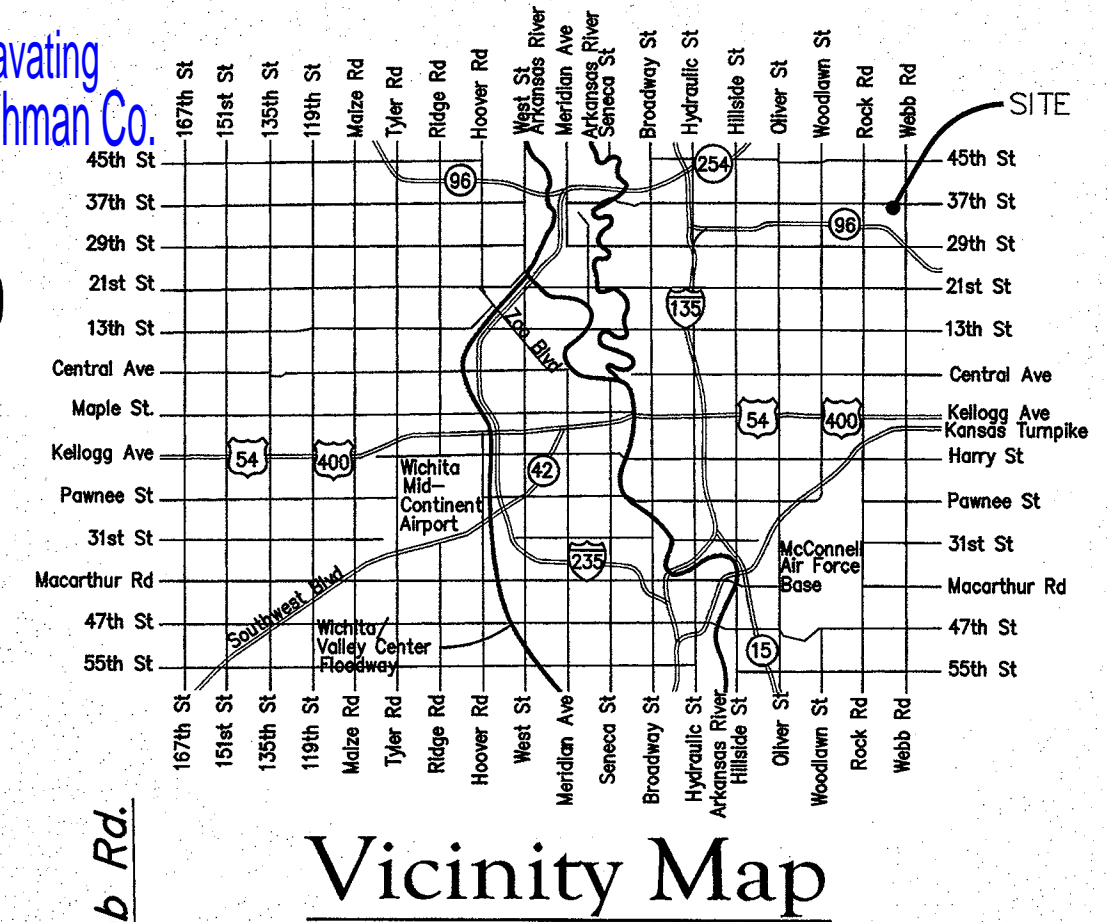
CITY OF WICHITA, KANSAS

Gary Janzen, P.E. City Engineer

Project Number
0298 PPD (607861)

AS BUILT PLANS

Contractor: Superior Excavating
Inspector: Fred Smith, Baughman Co.
pdf's by: KEK, 4/7/15



Sheet Index

Title Sheet	1
Lines 1 & 1A	2
Line 2	3
Std. Type 1 Curb Inlet Detail	4
Pavement Underdrain Detail	5
Miscellaneous & Rip-rap Details	6
Dry Detention Pond Plan	7
Grading & Erosion Control Plan	8
Erosion Control Details	9-13*
Copy of Plat	14

*Erosion control details available at City of Wichita web site at <http://www.wichita.gov/Government/Departments/PWU/Pages/Regulations.aspx>

Benchmarks

BM #1: CHISELED SQUARE ON TOP OF CURB, 14' E. & 2.5' N. OF THE MOST EASTERLY NE COR., LOT 19, COMOTARA INDUSTRIAL PARK SECOND ADDITION.
ELEV. = 1407.17 NAVD88

BM #2: CHISELED SQUARE ON SOUTHWEST CORNER OF CATCH BASIN TOP, 12.5' E. & 6.5' N. OF THE SE COR., LOT 19, COMOTARA INDUSTRIAL PARK SECOND ADDITION.
ELEV. = 1404.33 NAVD88

Storm Water Certification:
New Development or Redevelopment

These construction plans were prepared in accordance with the current Stormwater Management Regulations as set forth in the City of Wichita's Storm Water Management Ordinance 16.32 and the policies/guidelines presented in the Wichita/Sedgwick County Storm Water Manual.

Disturbed Area = 1.5 ac.
Water Quality Treatment: sump inlet
Downstream Channel Protection: Not required for this site.
The BMPs used for this development is silt fence and construction entrance.
The City's stormwater detention requirements are met by the site design.

APPROVED AS NOTED
BY WICHITA PUBLIC WORKS ENGINEERING
AND STORMWATER DIVISION

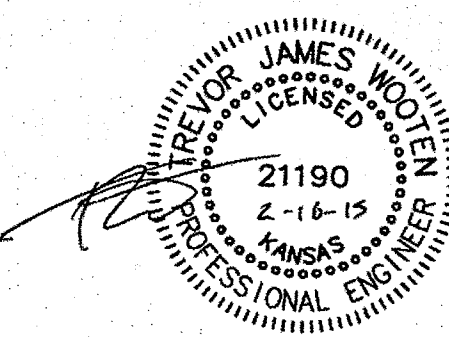
Engineering *Rebecca Aul* 2/19/2015

Stormwater *[Signature]* 2/19/2015

NOTE TO CONTRACTORS

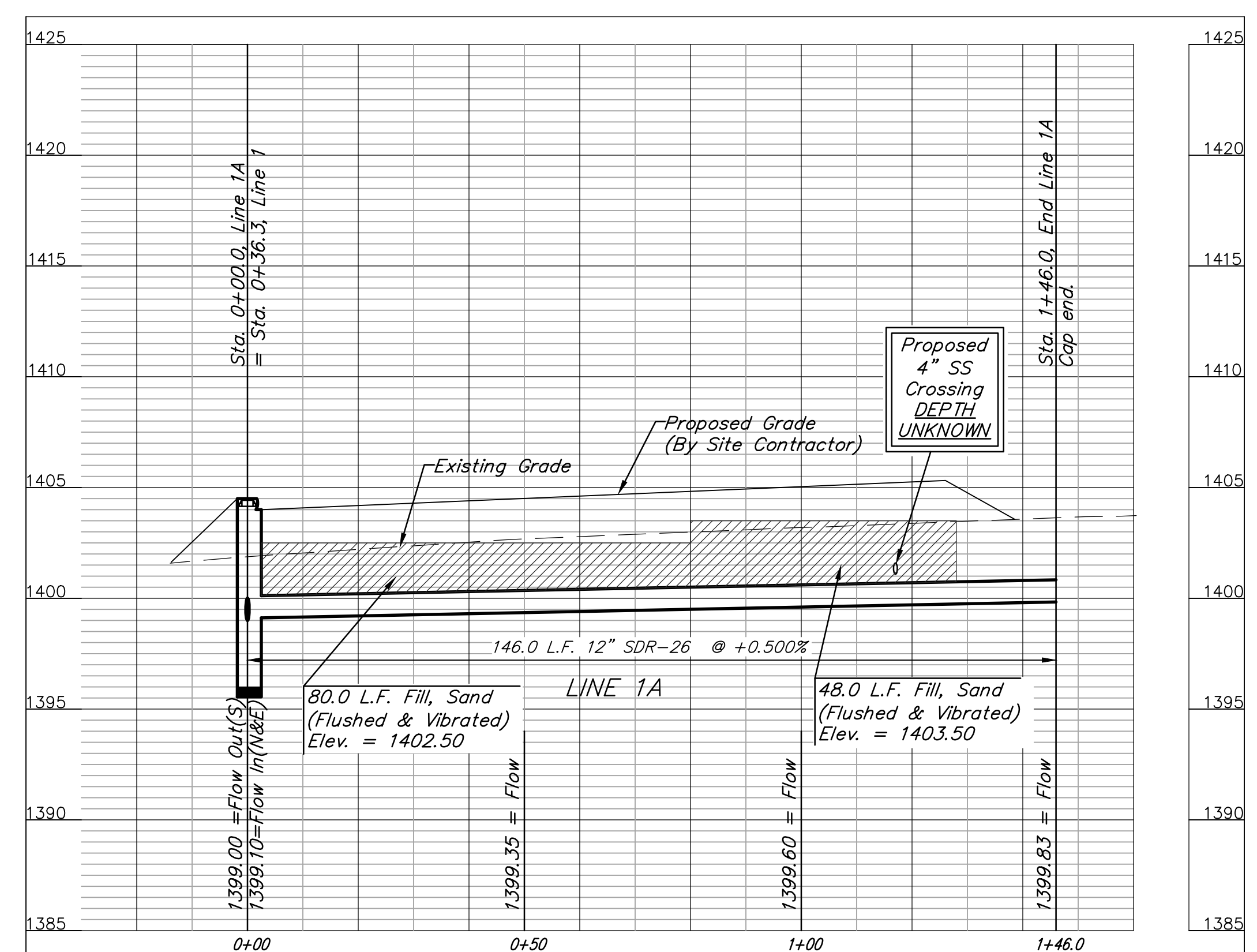
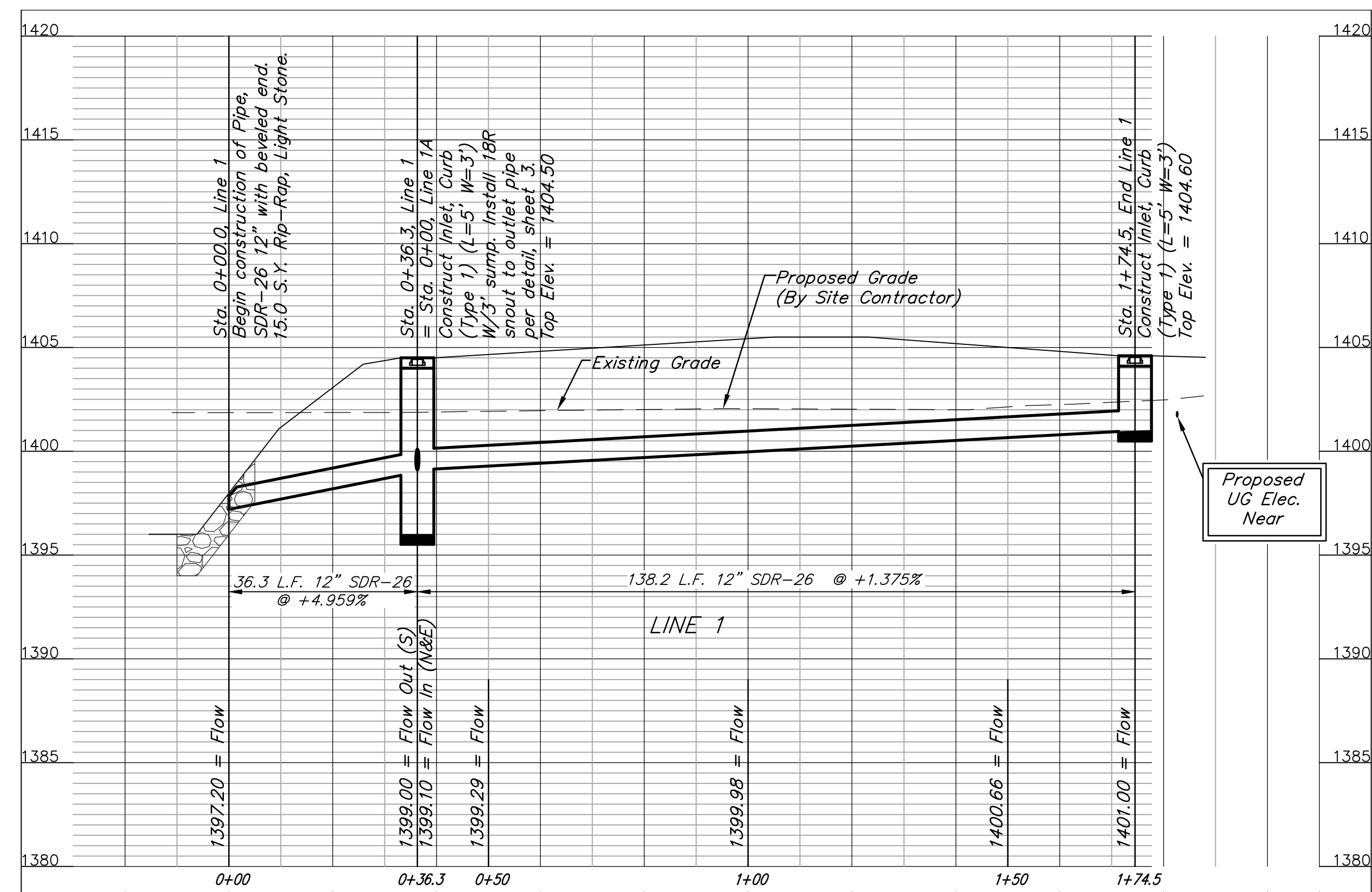
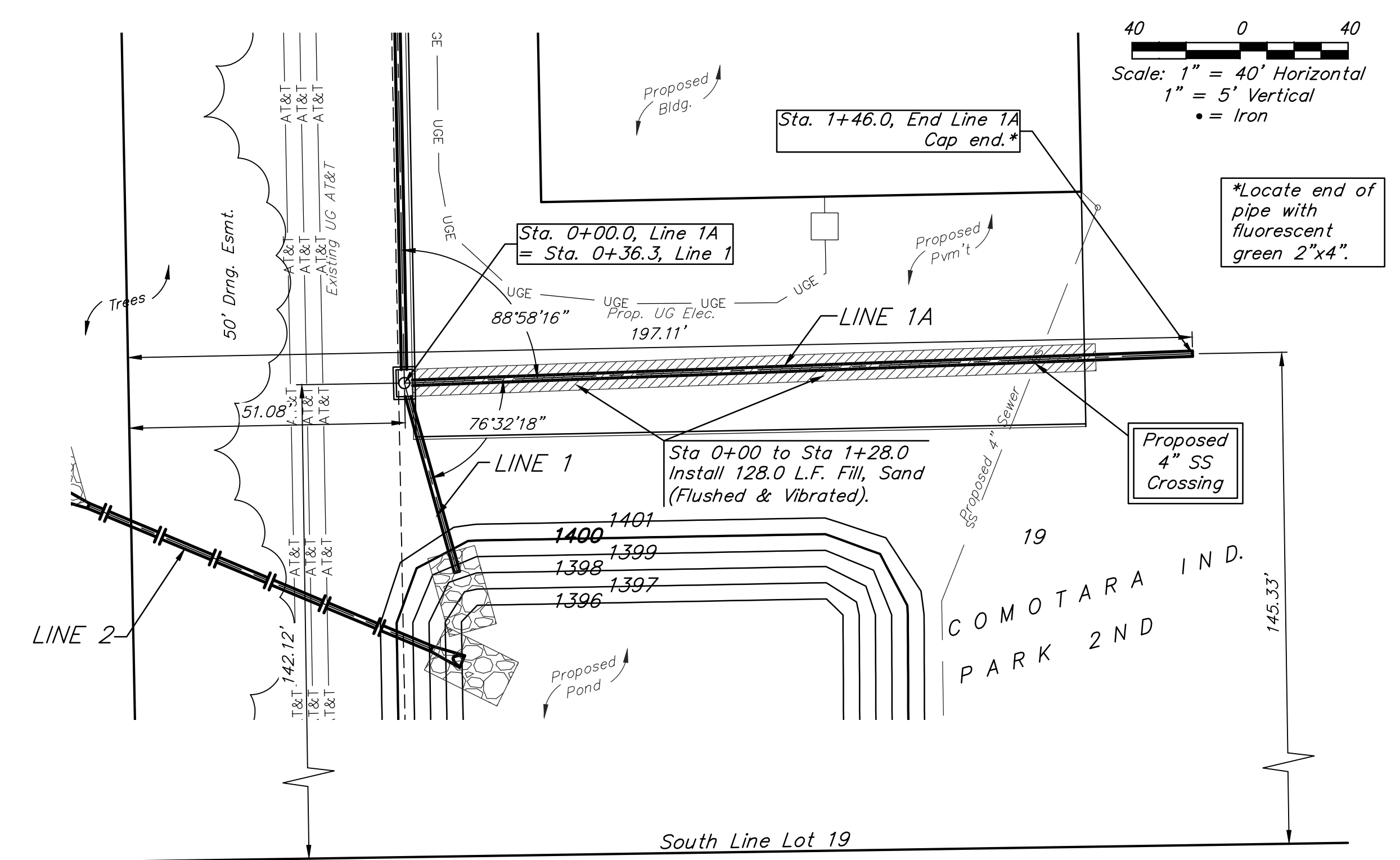
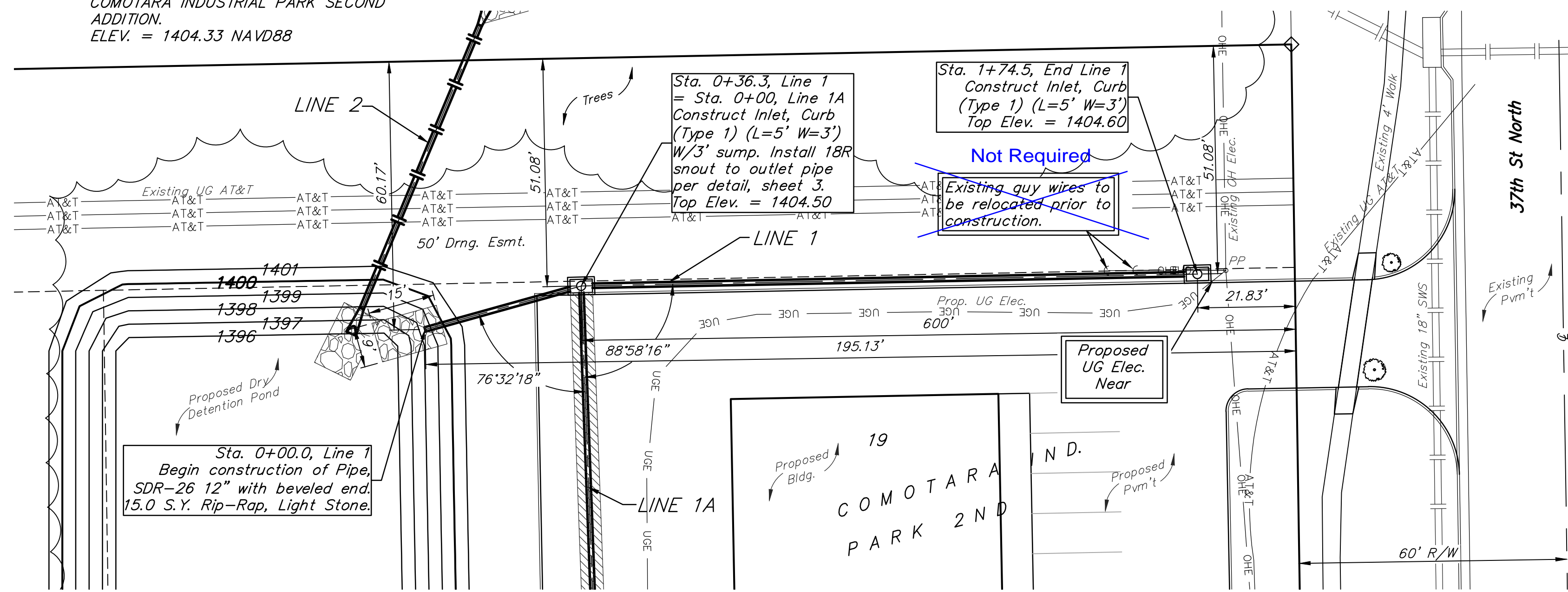
Installation, inspection and testing for this project is to be provided by a Licensed Consulting Engineering Firm under contract with the Owner/Developer. Said inspection to be in accordance with the City of Wichita standard construction engineering practices and certified by a Licensed Professional Engineer in the state of Kansas. No work shall be performed by the Contractor without such inspection nor shall any work be commenced without written authorization by the City Engineer. All Construction and Materials shall comply with the City of Wichita Specifications and Standards and Special Provisions (on file and available at Wichita.gov).

An approved copy of these plans signed by City staff are required on-site.



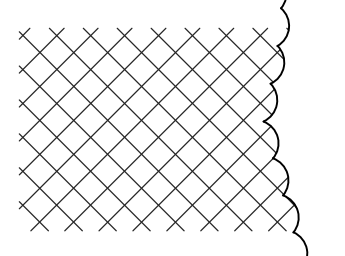
BENCHMARKS:
 BM #1: CHISELED SQUARE ON TOP OF CURB, 14' E. & 2.5' N. OF THE MOST EASTERLY NE COR., LOT 19, COMOTARA INDUSTRIAL PARK SECOND ADDITION.
 ELEV. = 1407.17 NAVD88

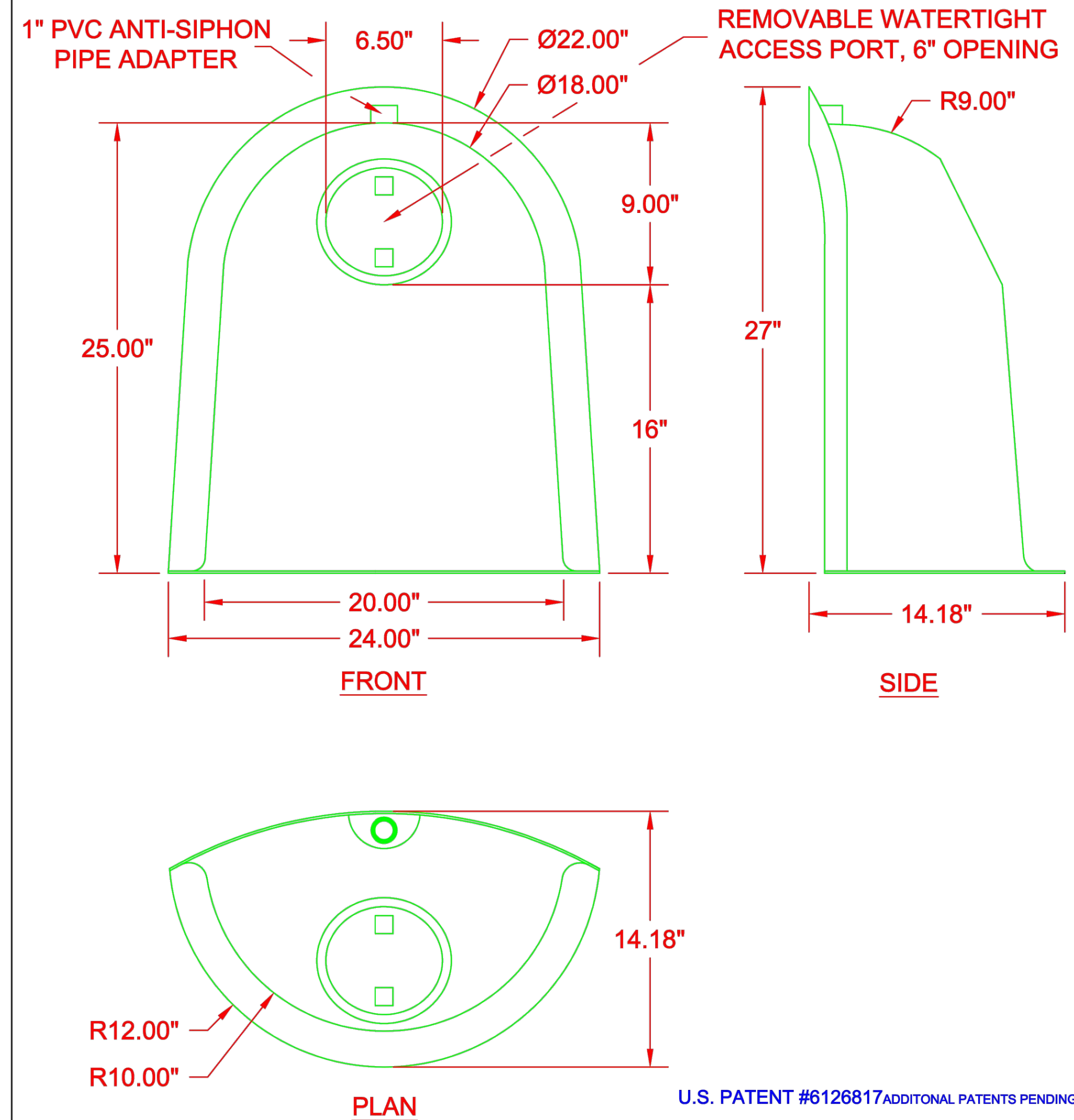
BM #2: CHISELED SQUARE ON SOUTHWEST CORNER OF CATCH BASIN TOP, 12.5' E. & 6.5' N. OF THE SE COR., LOT 19, COMOTARA INDUSTRIAL PARK SECOND ADDITION.
 ELEV. = 1404.33 NAVD88



		COMOTARA IND. PARK 2ND LOT 19	
		LINES 1 & 1A STORM WATER SEWER IMPROVEMENTS	
<small>Baughman Company, P.A. 315 Ellis St., Wichita, KS 67211 P 316-262-2771 F 316-262-0149 ENGINEERING SURVEYING PLANNING LANDSCAPE ARCHITECTURE</small>			
PROJECT NUMBER 0298 PPD (607861)	DESIGN TJW	DRAWN TMS	DATE 02/15
REVISIONS:	APPROVED	SHEET	2 OF 14

BENCHMARKS:
 BM #1: CHISELED SQUARE ON TOP OF CURB, 14' E. & 2.5' N. OF THE MOST EASTERLY NE COR., LOT 19, COMOTARA INDUSTRIAL PARK SECOND ADDITION. ELEV. = 1407.17 NAVD88
 BM #2: CHISELED SQUARE ON SOUTHWEST CORNER OF CATCH BASIN TOP, 12.5' E. & 6.5' N. OF THE SE COR., LOT 19, COMOTARA INDUSTRIAL PARK SECOND ADDITION. ELEV. = 1404.33 NAVD88

 Indicates trees to be removed by contractor. To be paid for as lump sum bid item "Site Clearing"
 All other trees shall remain and be protected from damage during construction. Overhanging limbs shall be trimmed by the Contractor only as necessary for construction and with approval of the Engineer. Cost of tree trimming to be included in bid item "Site Clearing"

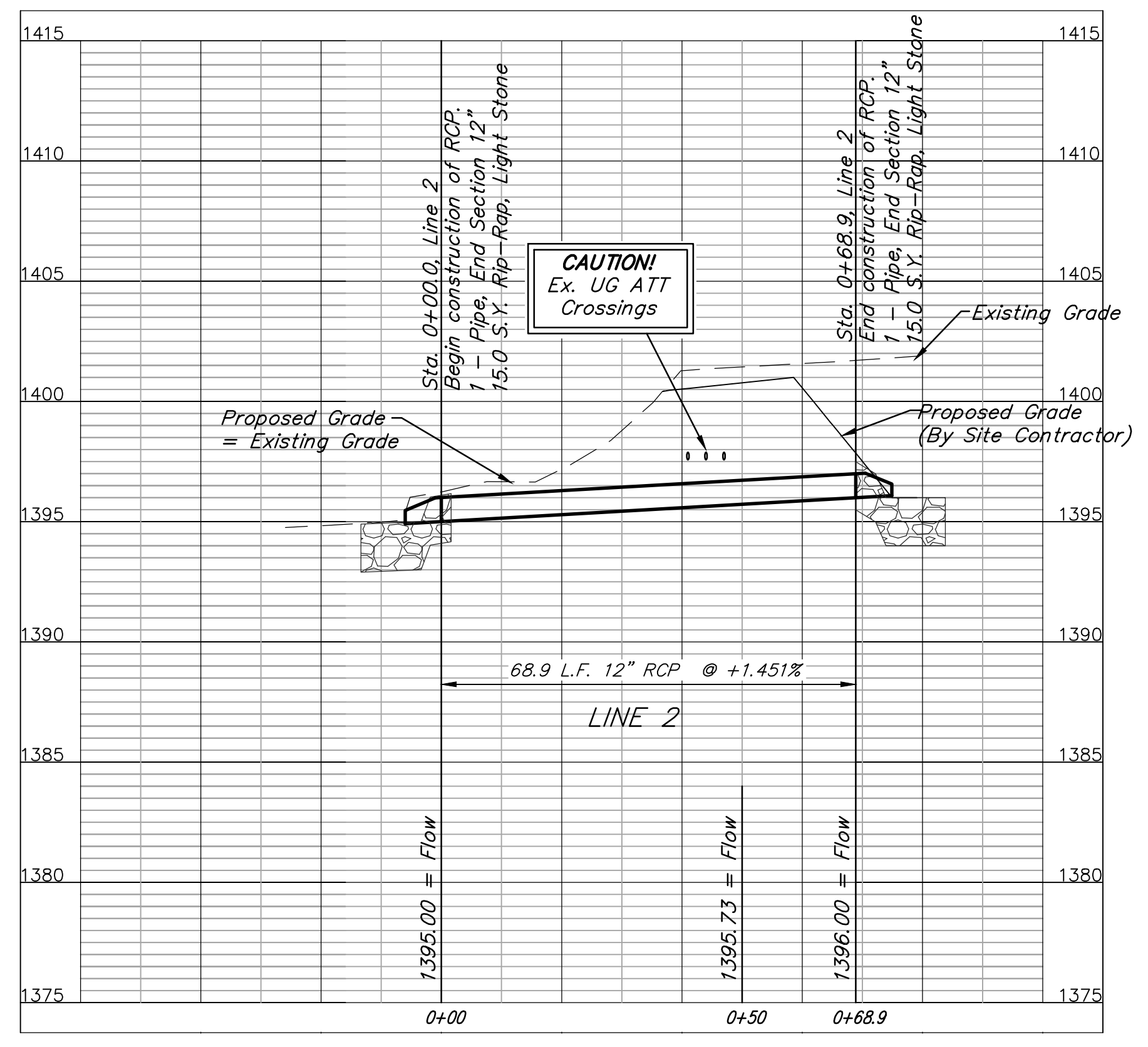
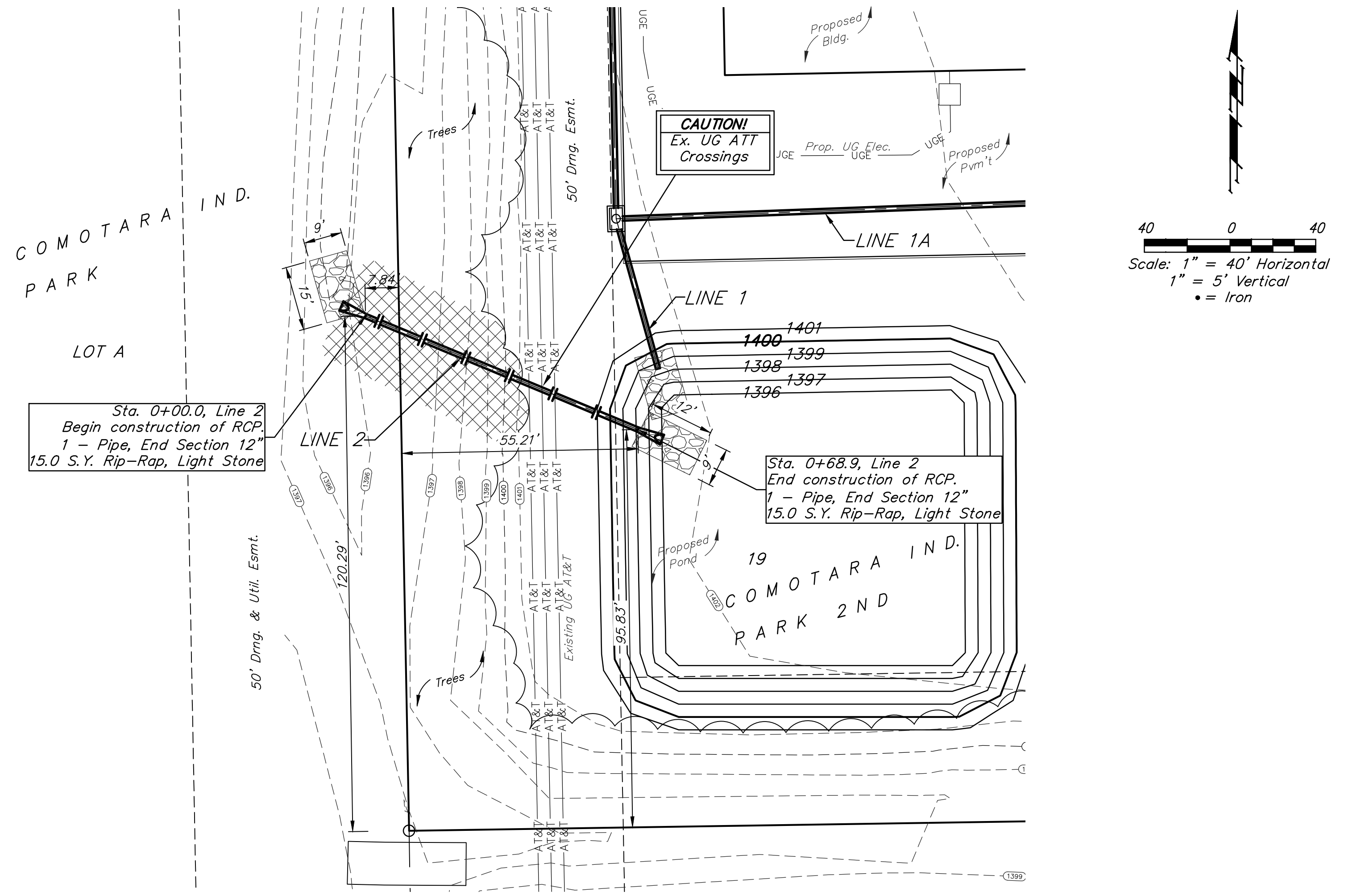



U.S. PATENT #6126817 ADDITIONAL PATENTS PENDING

BMP, INC.
 53 MT. ARCHER ROAD, LYME, CT. 06371
 (800) 504-8008 FAX: (860)434-3195

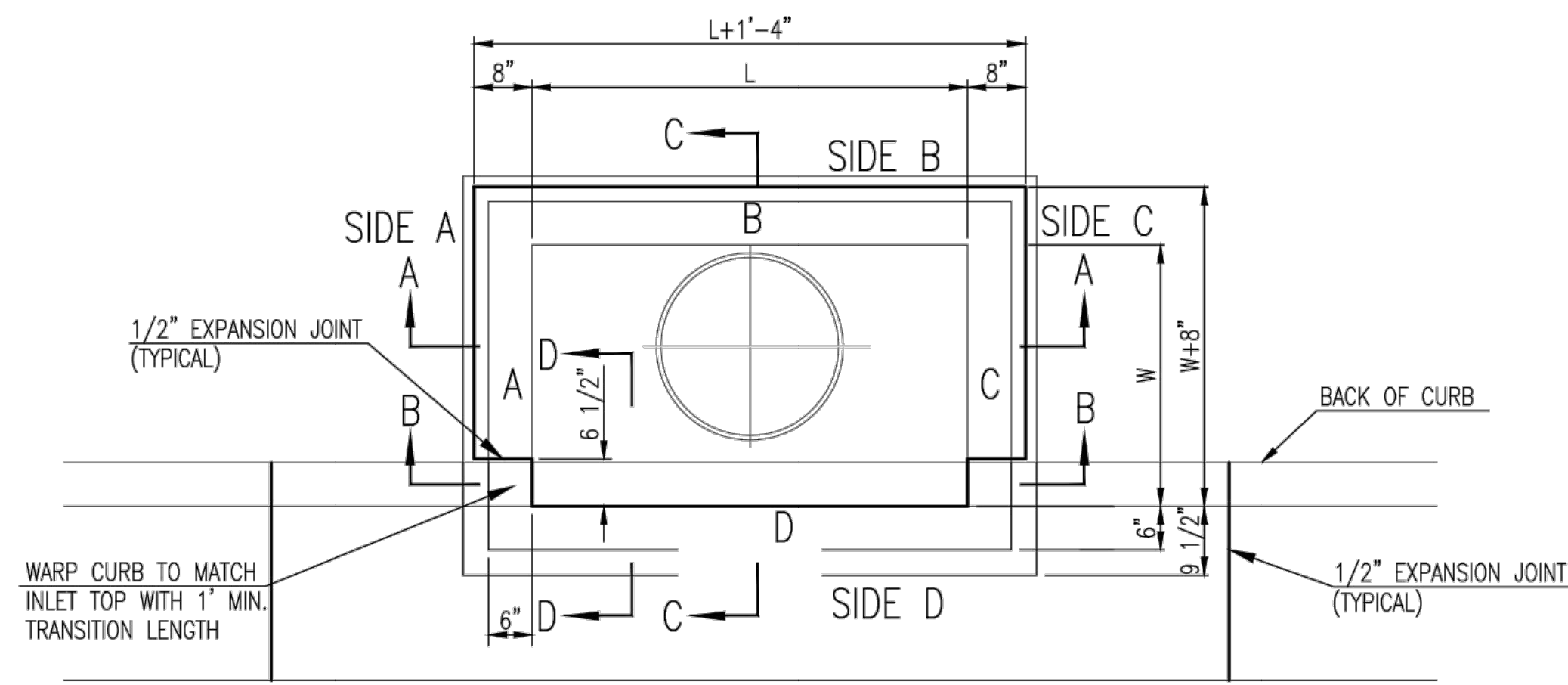
DESCRIPTION	DATE	SCALE
18R SNOUT OIL & DEBRIS STOP	09/06/99	NONE
DRAWING NUMBER		
18R		

DESIGNED TO FIT
 48"-60" DIAM.
 STRUCTURES



	COMOTARA IND. PARK 2ND LOT 19	
	LINE 2	
STORM WATER SEWER IMPROVEMENTS		
Baughman Company, P.A. 315 Ellis St., Wichita, KS 67211 P: 316-262-7271 F: 316-262-0149 ENGINEERING SURVEYING PLANNING LANDSCAPE ARCHITECTURE		
PROJECT NUMBER 0298 PPD (607861)	DESIGN TJW	DRAWN TMS
REVISIONS:	APPROVED	DATE 02/15
	SCALE Noted	SHEET
		3 OF 14

Plans SWS.dwg 13-10-E973



TOP VIEW

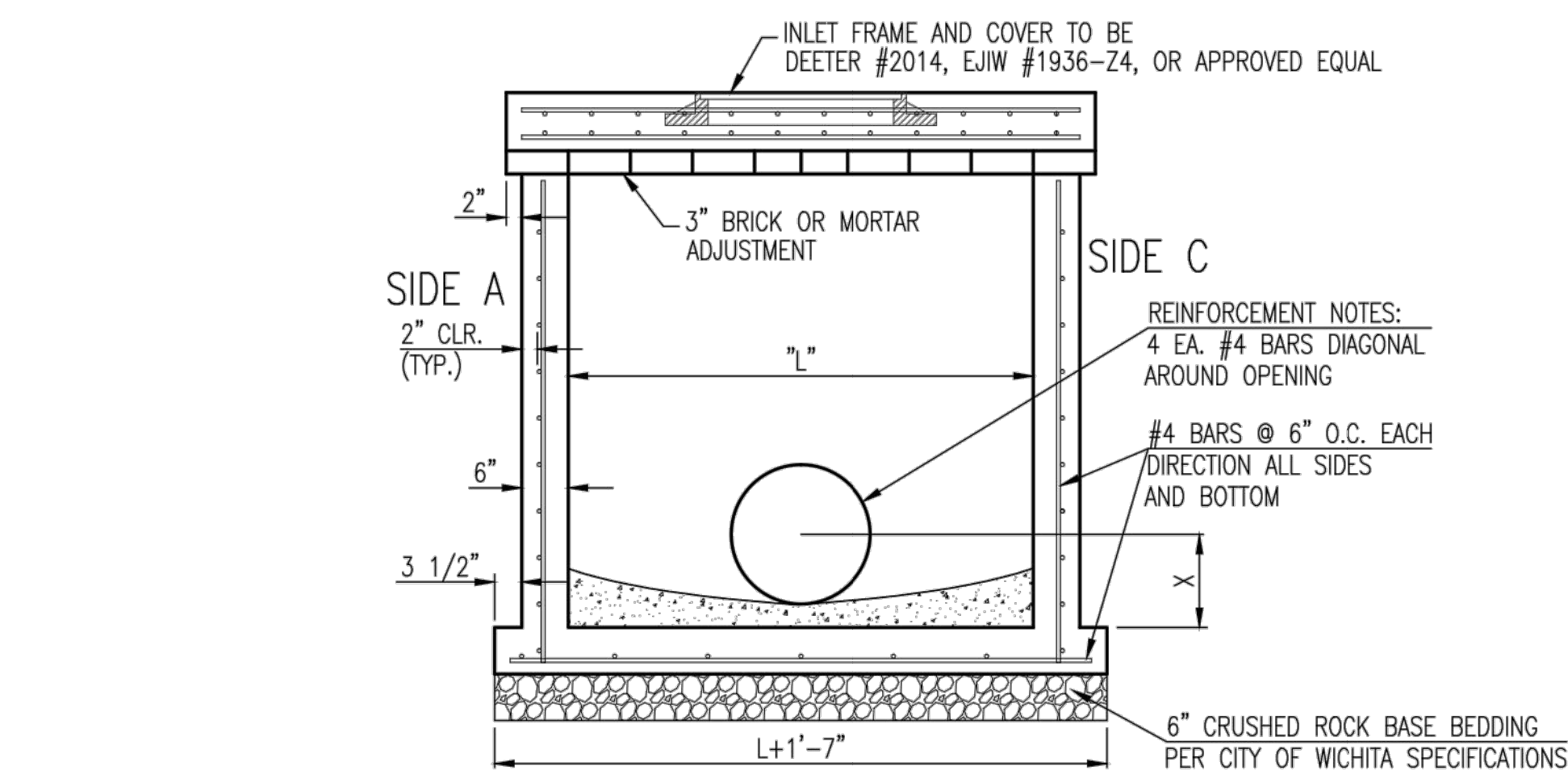
BAR SCHEDULE		
INLET OPENING	B1 BARS	SPACING
5'-0"	#4	4"
10'-0"	#6	3.5"

PRECAST CURB INLET WIDTHS			
W	PRE-CAST TOP SIZE		PIPE DIA.**
	WIDTH	LENGTH	
3'-0"	W+8"	L+1'-4"	21" & SMALLER
4'-0"	W+8"	L+1'-4"	24" & 30"
5'-0"	W+8"	L+1'-4"	36" & 42"
6'-0"	W+8"	L+1'-4"	48" & 54"
7'-0"	W+8"	L+1'-4"	60" & 66"

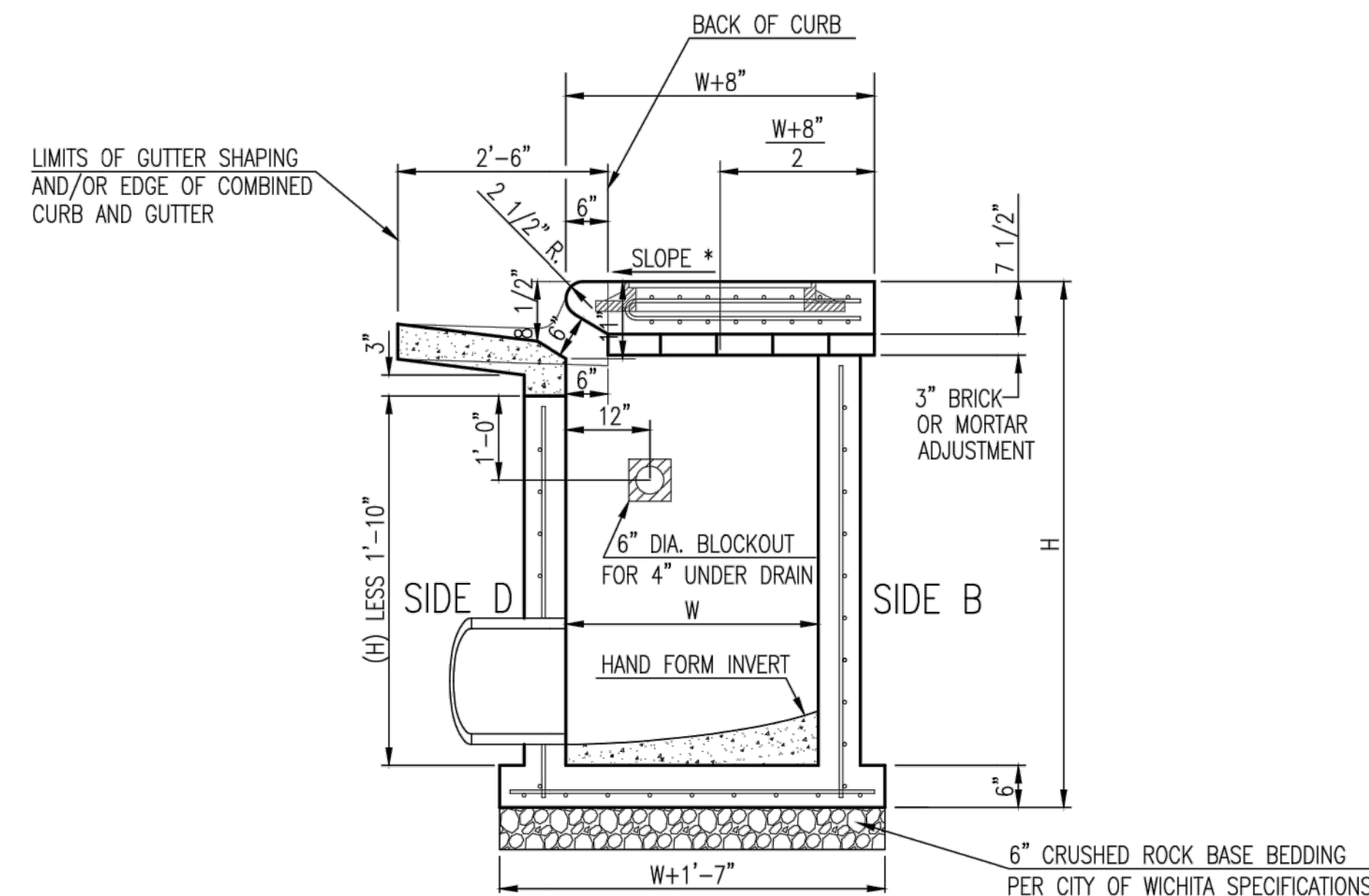
** FOR PIPES PERPENDICULAR TO INLET WALL

GENERAL NOTES

1. CONCRETE TOPS TO BE INSTALLED ON THIN MORTAR CUSHION TO INSURE FULL SUPPORT ALONG BRICK. CONCRETE TOPS MAY BE CAST IN PLACE OR PRECAST. CONCRETE USED FOR INLET CONSTRUCTION SHALL CONFORM TO CITY OF WICHITA SPECIFICATIONS FOR CONCRETE PAVEMENT MIX.
2. CONTRACTOR SHALL HAVE THE OPTION OF CONSTRUCTING 8" BRICK MASONRY WALLS BETWEEN THE CONCRETE INLET BASE AND TOP OF THIS INLET WHEN W=5'-0" AND H=7'-0" OR LESS.
3. INLET INVERT SHALL BE SHAPED WITH 8 SACK SAND MIX CONCRETE TO CREATE FLOW CHANNELS AND TO INCREASE HYDRAULIC EFFICIENCY SUCH THAT THE INLET WILL BE SELF CLEANING BETWEEN ALL INLET AND/OR OUTLET PIPES.
4. THE ENDS OF ALL PIPES INSTALLED IN INLETS SHALL BE CUT OFF FLUSH WITH THE INSIDE FACE OF THE INLET WALL.
5. INLET FRAME AND COVER TO BE DEETER #2014, EJIW #1936 24, OR APPROVED EQUAL, SEE SW-303.
6. CONTRACTOR SHALL REMOVE LIFTING HOOKS AFTER INSTALLATION. RECESSES IN INLET WALL SHALL BE GROUTED FLUSH TO THE INLET WALL WITH HYDRAULIC CEMENT AFTER THE INLET IS IN PLACE. LIFTING HOLES THRU THE INLET WALL WILL NOT BE ACCEPTED.

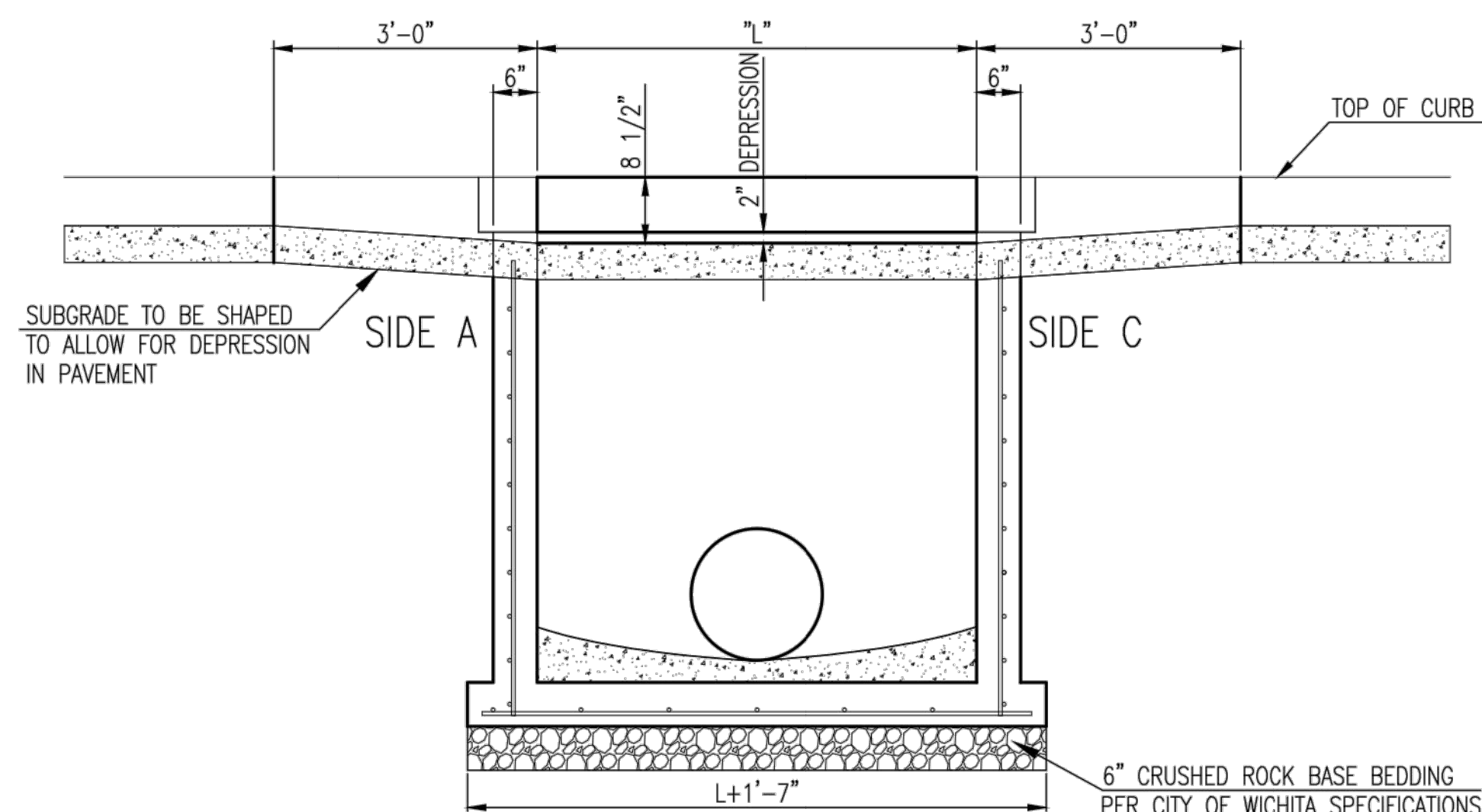
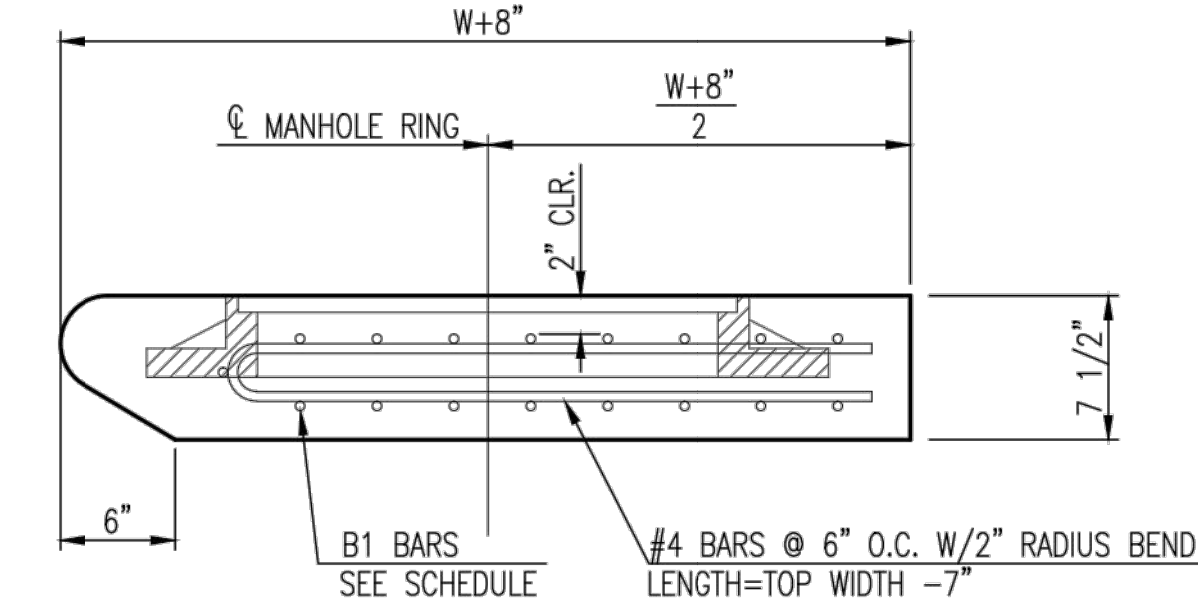


SECTION "A-A"

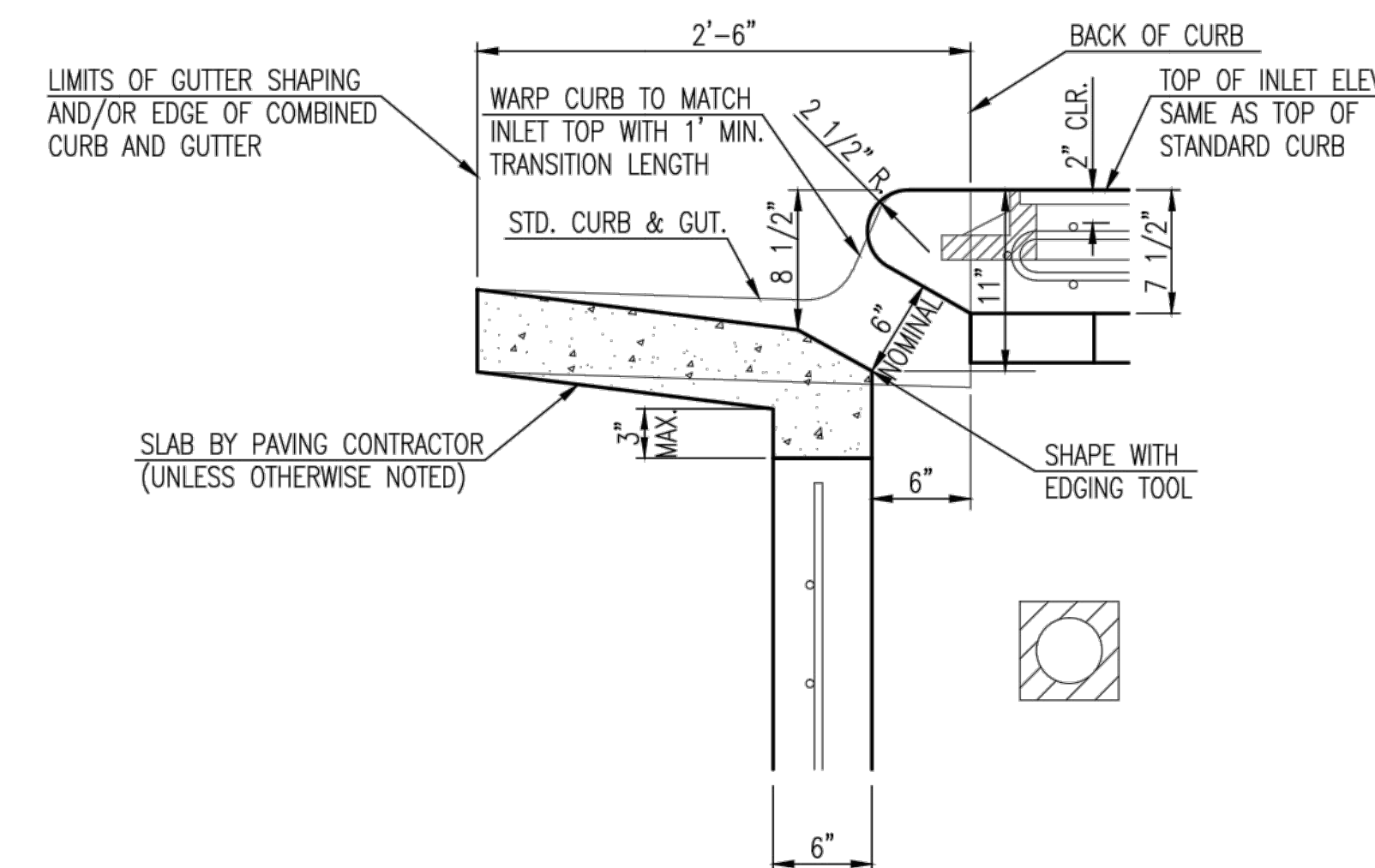


SECTION "C-C"

NOTES:
* SLOPE OF INLET TOP TO MATCH SIDEWALK OR PARKING SLOPES WITHIN LIMITS INDICATED.



SECTION "B-B"



SECTION "D-D"

CITY OF WICHITA
PUBLIC WORKS & UTILITIES
ENGINEERING DIVISION

**STANDARD TYPE 1
CURB INLET
5'-0" OR 10'-0" OPENING**

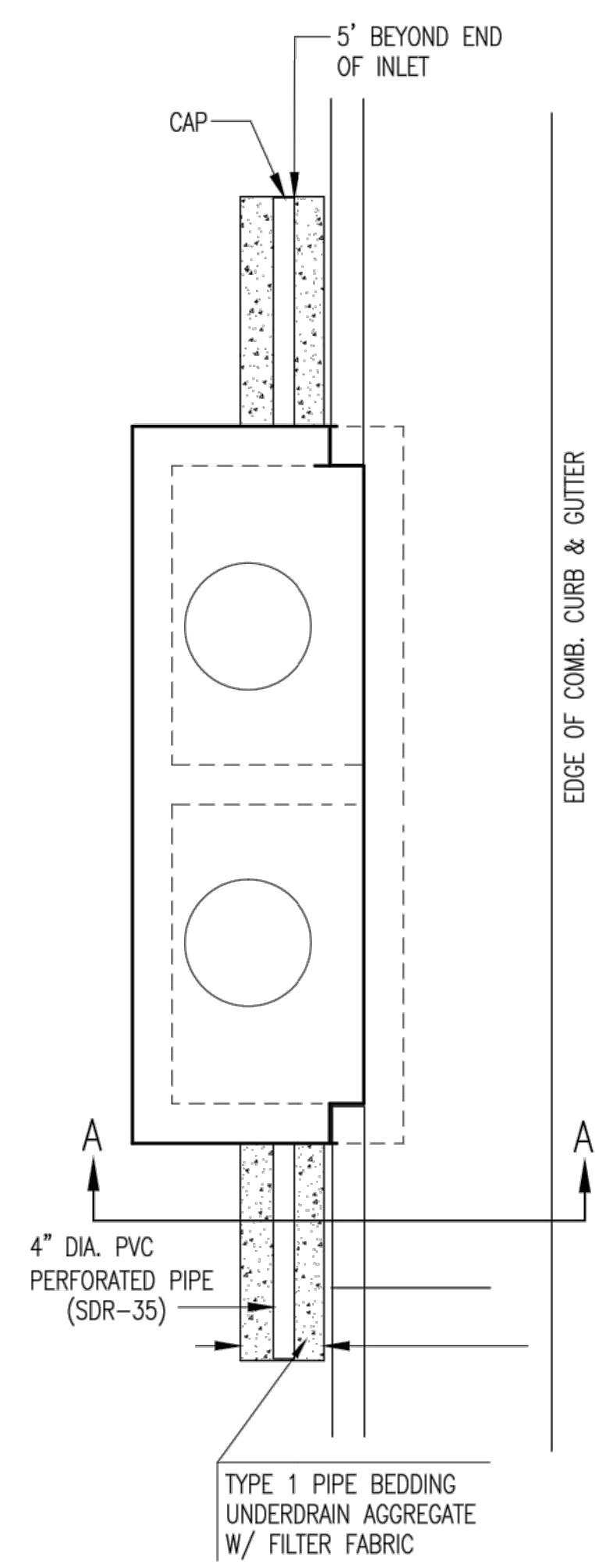
CITY ENGINEER
Gary Janzen, P.E.

PROJECT NUMBER 0298 PPD	OCA NUMBER (607861)	DATE 02/15
----------------------------	------------------------	---------------

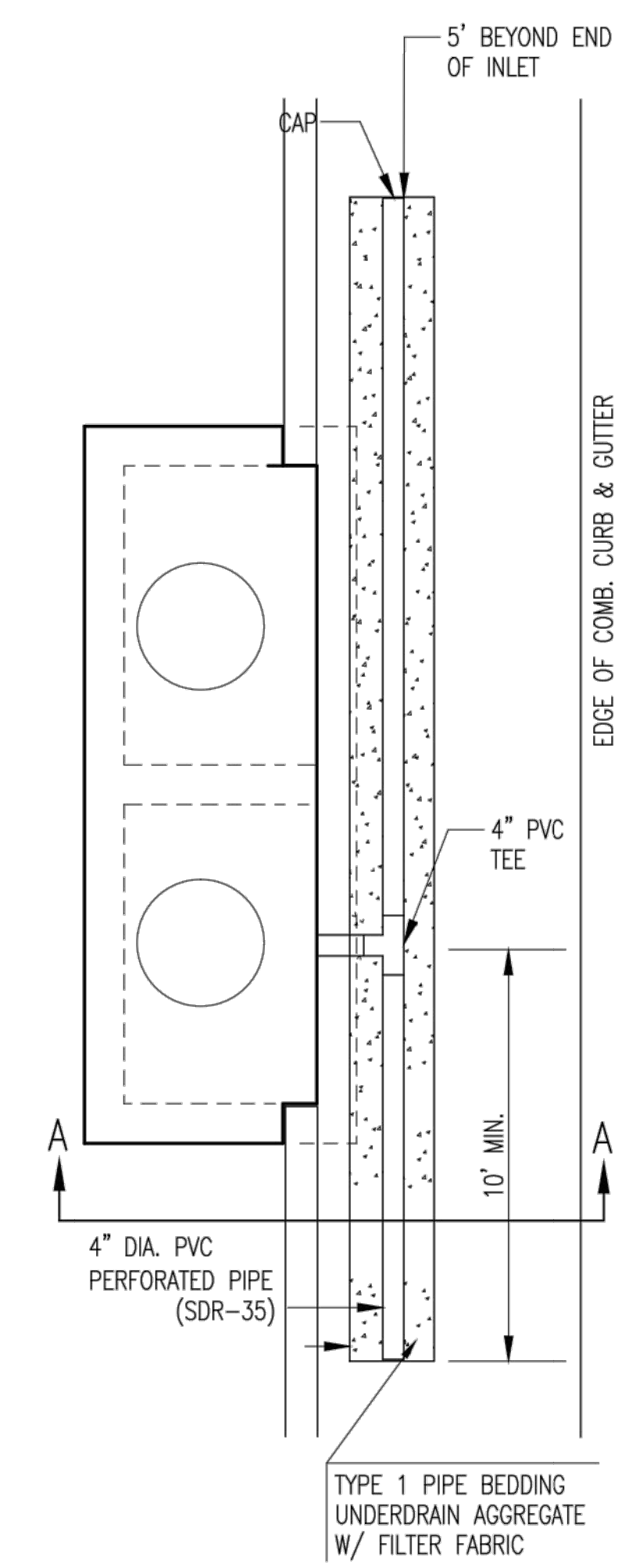
CITY ENGINEER'S OFFICE
CITY HALL - SEVENTH FLOOR
455 NORTH MAIN STREET
WICHITA, KANSAS 67202-1620
(316) 268-4501

DESIGN Staff	DRAWN Staff
SHEET 4 of 14	

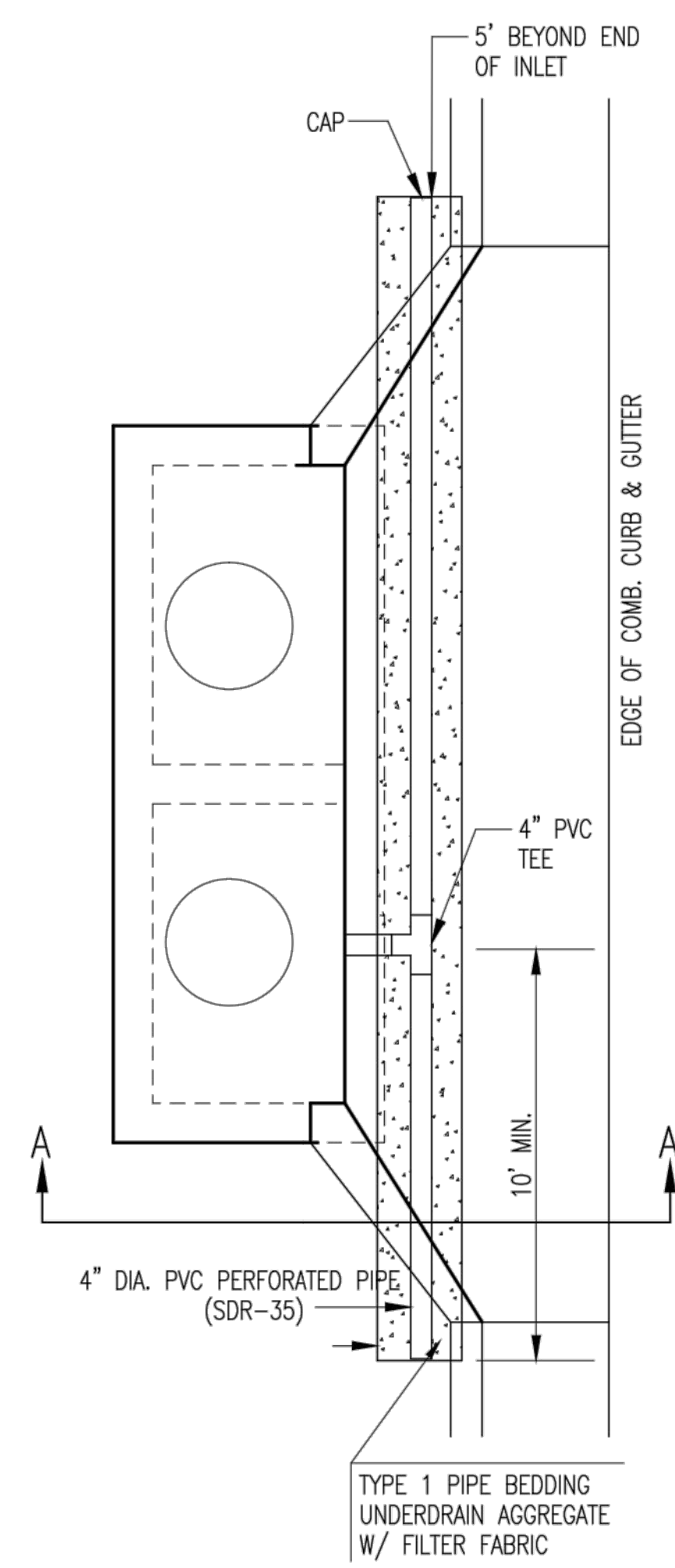
PAVEMENT UNDERDRAIN SHALL BE INSTALLED ON ALL CURB INLETS.



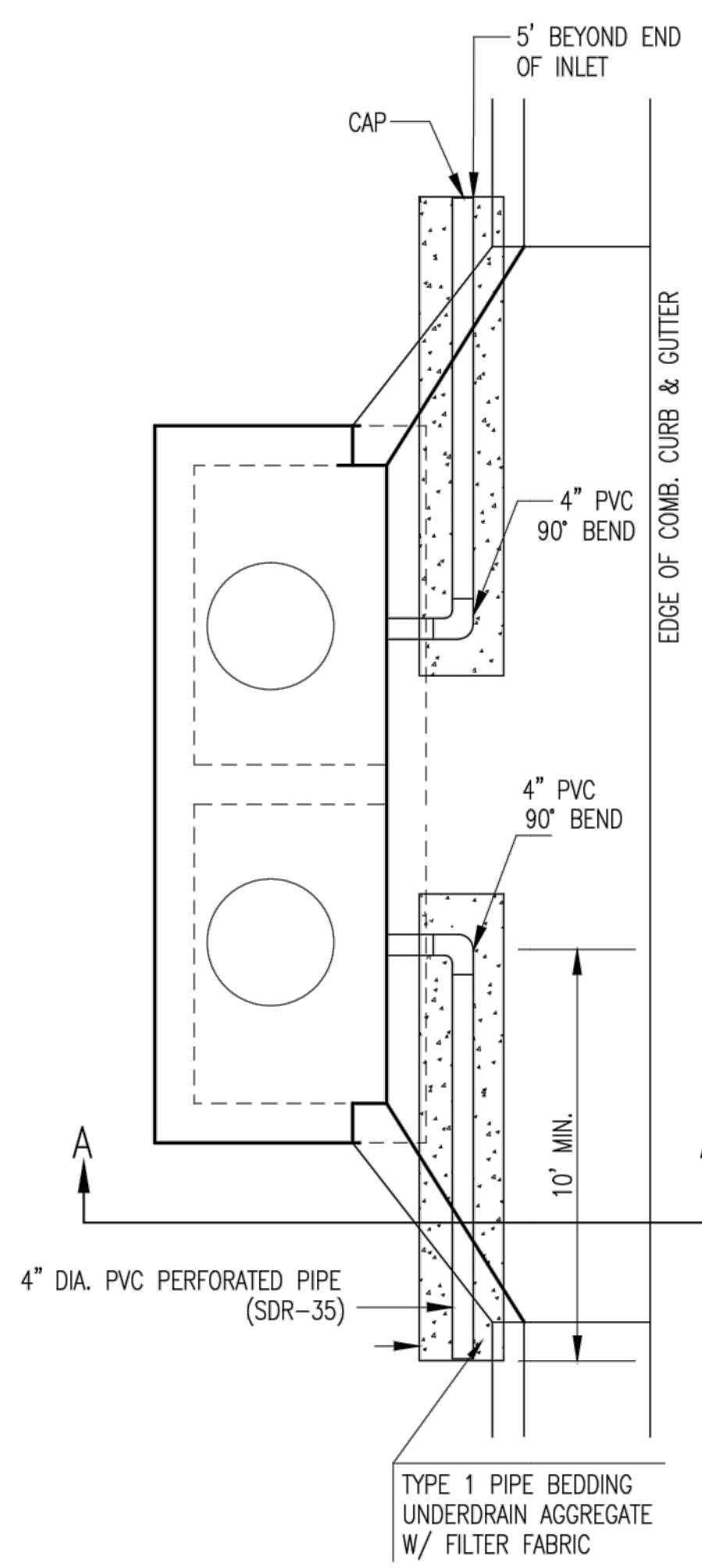
TYPE 1
OPTION 1



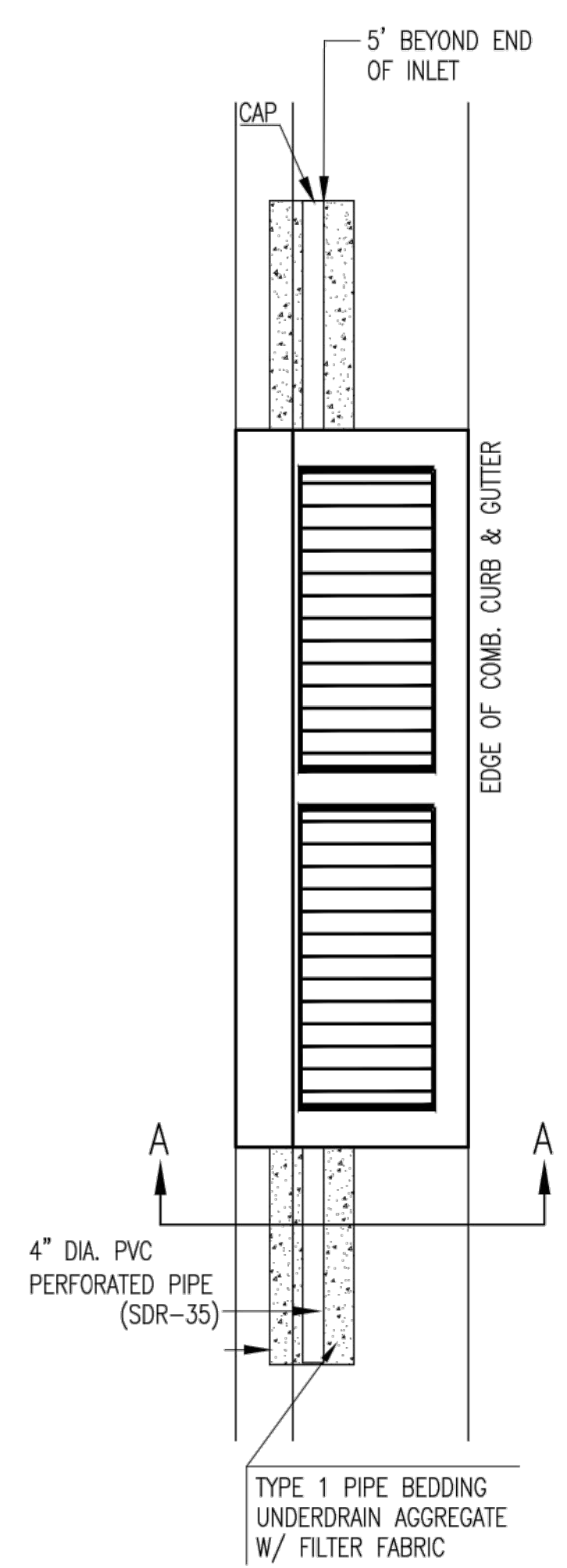
TYPE 1
OPTION 2



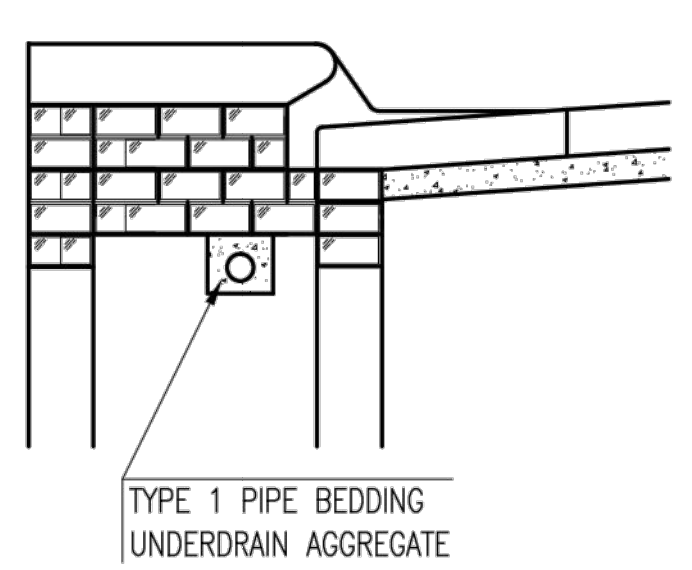
TYPE 1-A INLET
OPTION 1



TYPE 1-A INLET
OPTION 2

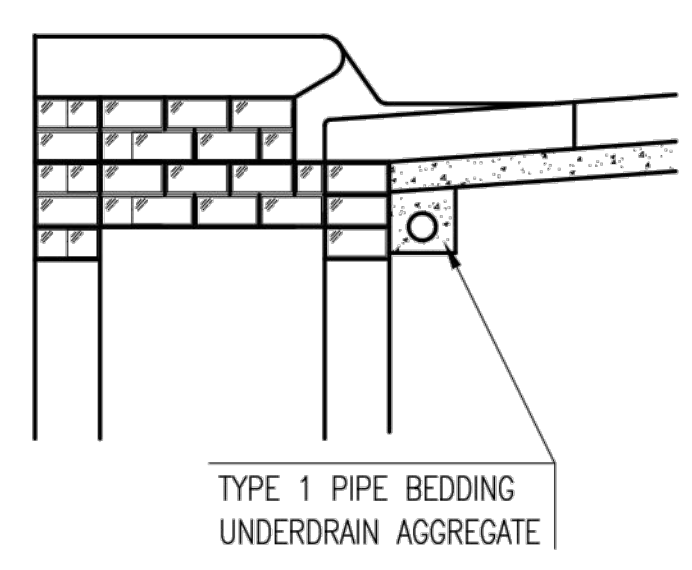


TYPE 2

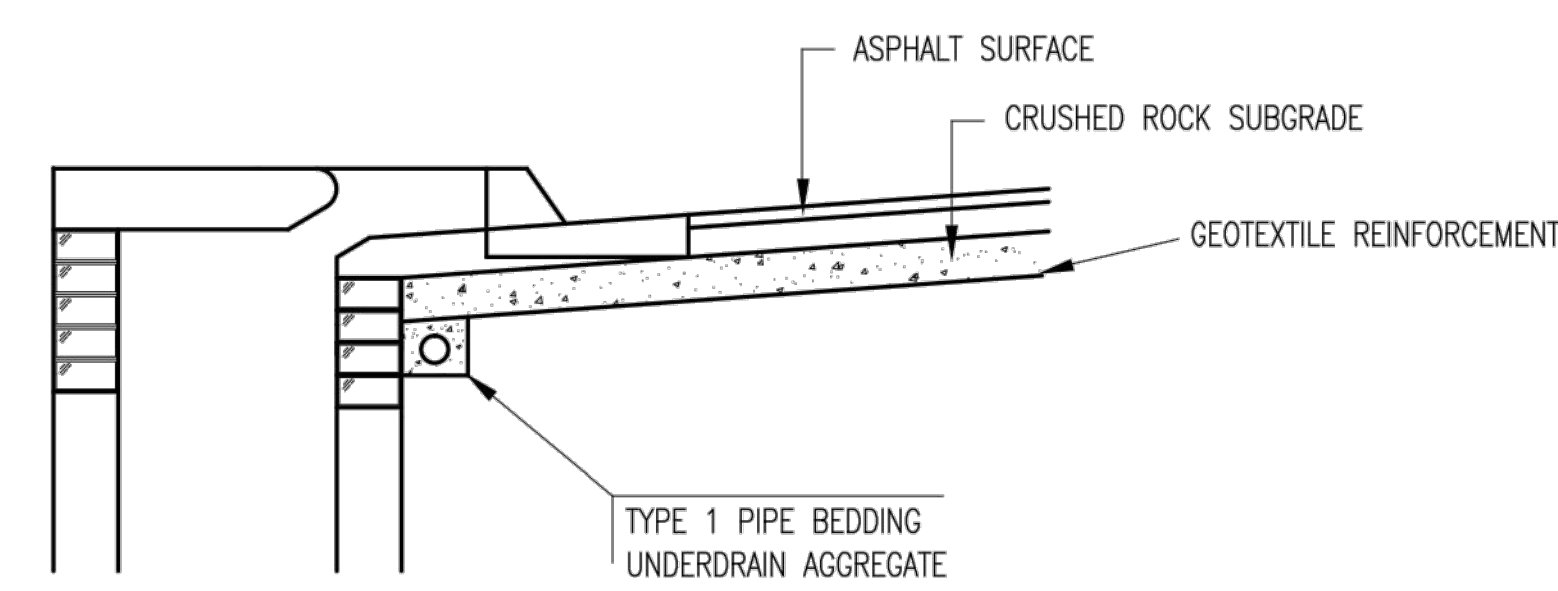


(MIN. 16 PERFORATIONS PER LIN. FT. @ 1/4" DIA.)
PERFORATIONS TO BE ON BOTTOM HALF

SECTION A-A



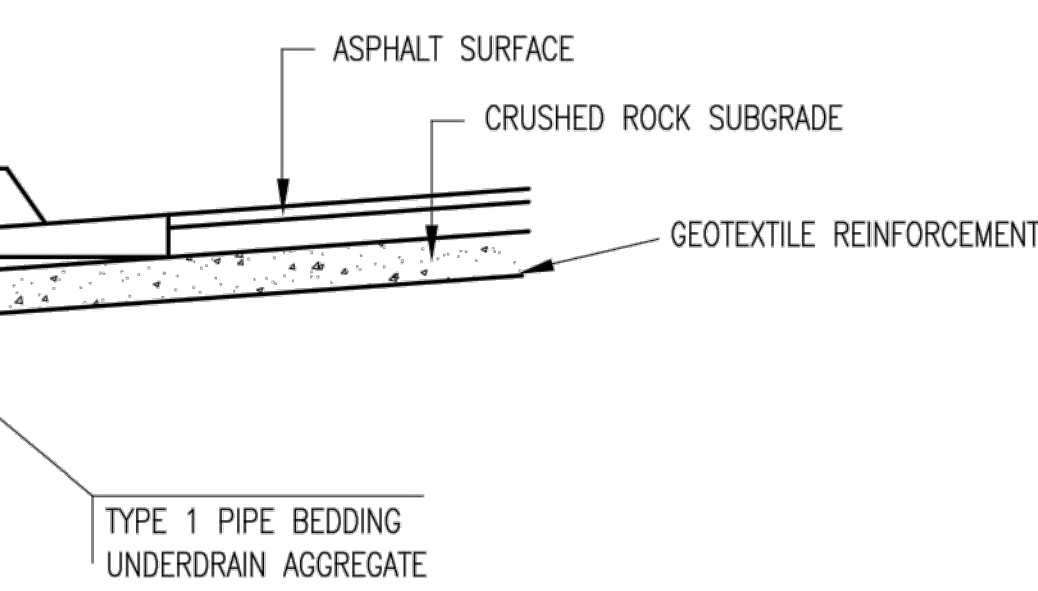
TYPE 1 PIPE BEDDING
UNDERDRAIN AGGREGATE



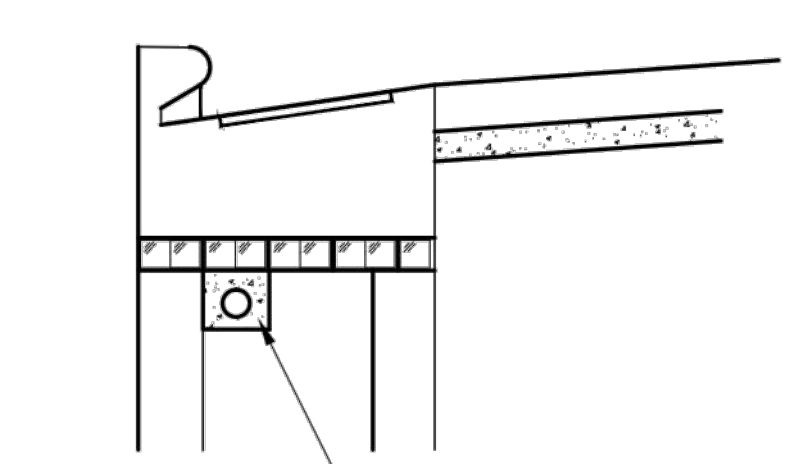
SECTION A-A

PAVEMENT UNDERDRAIN DETAIL

BID ITEM TO BE PROVIDED PER 4" PERFORATED UNDERDRAIN PIPE.

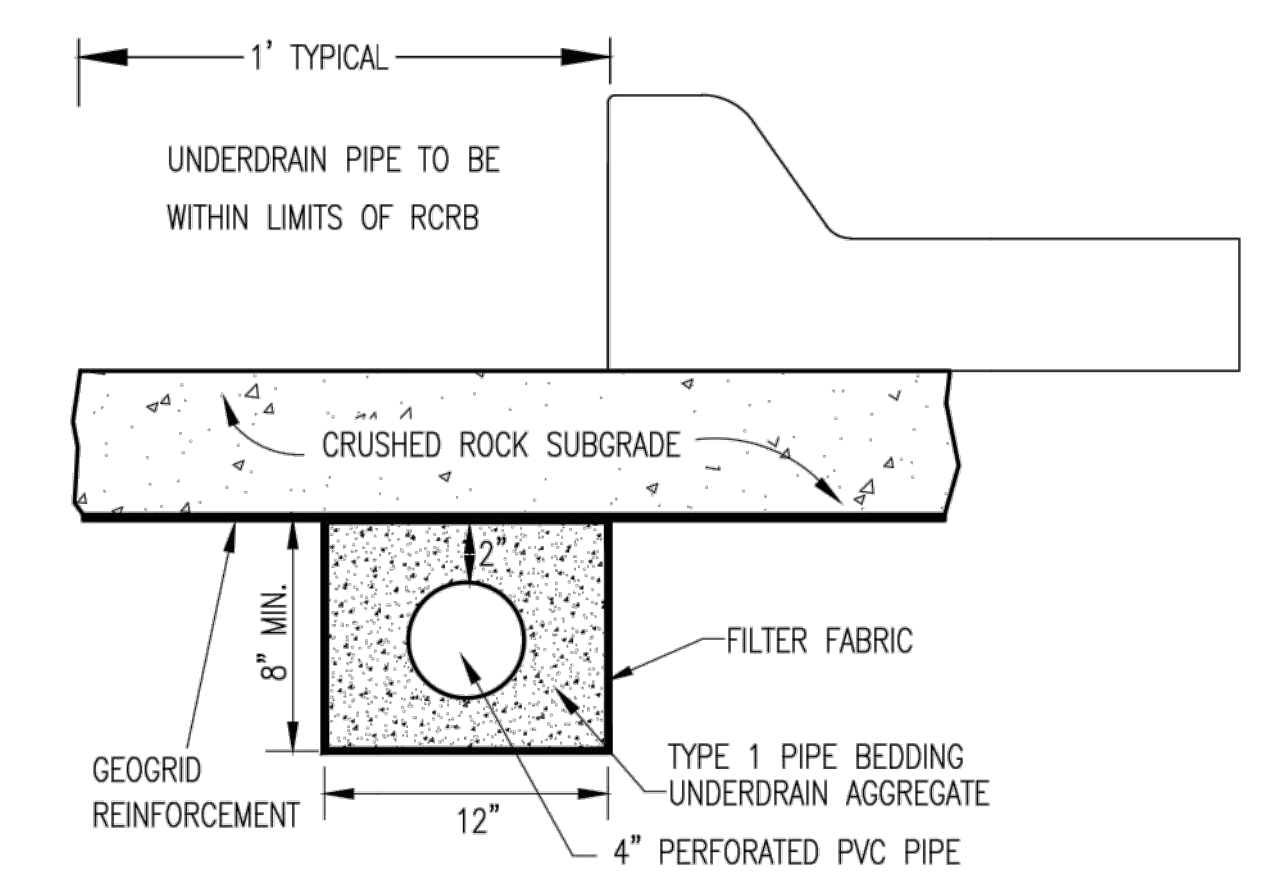


TYPE 1 PIPE BEDDING
UNDERDRAIN AGGREGATE



TYPE 1 PIPE BEDDING
UNDERDRAIN AGGREGATE

SECTION A-A



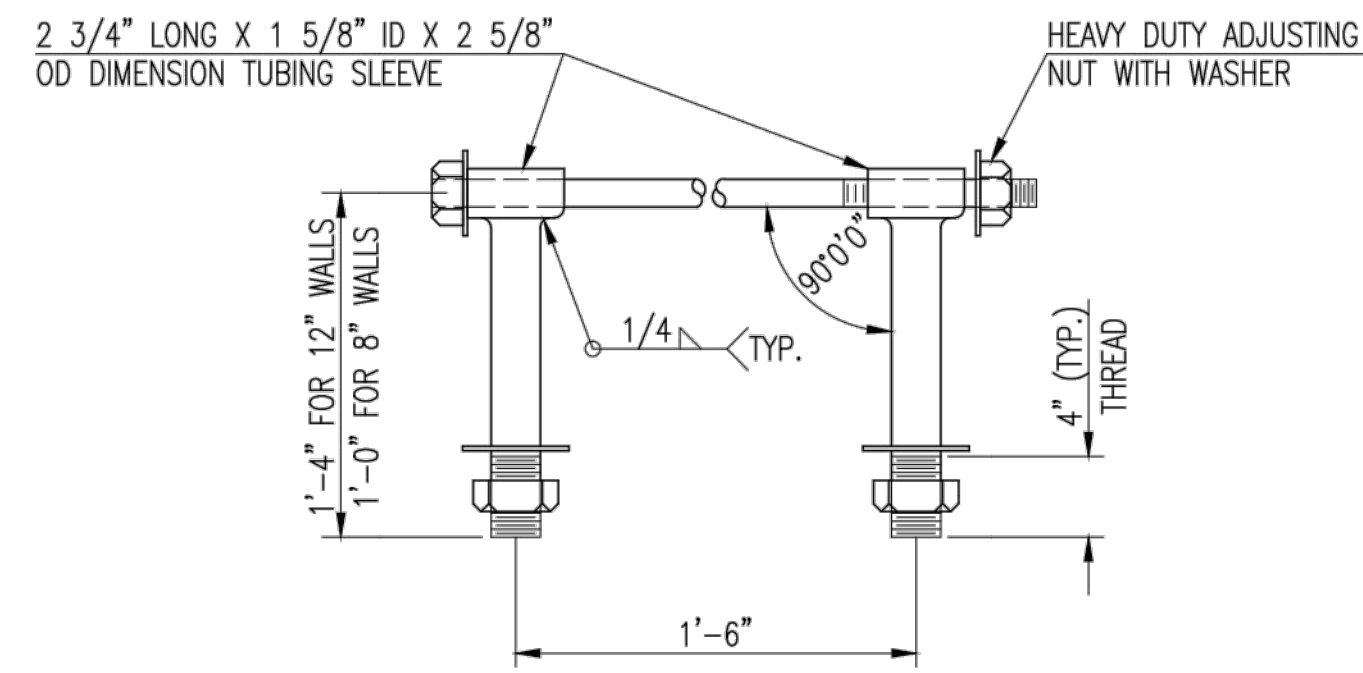
SECTION A-A (TYPICAL)

GENERAL NOTES

- PAVEMENT CONTRACTOR WILL BE REQUIRED TO INSTALL SDR 35, 4" PERFORATED DRAIN PIPE AND TEE AS INDICATED IN THE DETAILS.
- WHEN SWS CONSTRUCTED BY SEPARATE PROJECT, SWS CONTRACTOR SHALL INSTALL SDR 35, 4" DRAIN PIPE STUB ONLY THROUGH WALLS OF CURB INLETS AND CAP TO ALLOW FUTURE CONNECTION OF TEE AND ADDITIONAL DRAIN PIPE BY OTHERS.
- UNDERDRAIN PIPE SHALL BE PAID AS A MEASURED QUANTITY BY THE LINEAL FOOT.

CITY OF WICHITA
PUBLIC WORKS & UTILITIES
ENGINEERING DIVISION

CURB INLET PAVEMENT UNDERDRAIN DETAIL		
CITY ENGINEER GARY JANZEN, P.E.		
PROJECT NUMBER 0298 PPD	OCA NUMBER (607861)	DATE 02/15
CITY ENGINEER'S OFFICE CITY HALL - SEVENTH FLOOR 455 NORTH MAIN STREET WICHITA, KANSAS 67202-1620 (316) 268-4501		SHEET 5 of 14

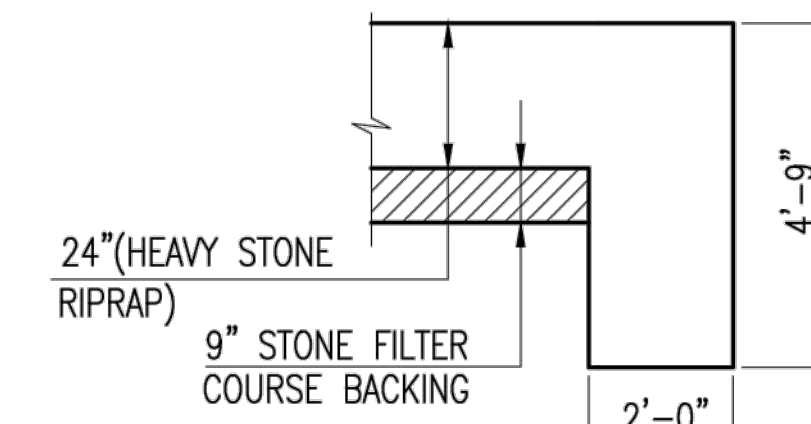


HEAVY DUTY (H.D.) COUPLER

NO SCALE

NOTES

1. BOLTS TO BE A-36 1 1/2" DIAMETER.
2. BOLTS, NUTS, WASHERS AND SLEEVES TO BE ZINC PLATED.
3. WASHERS TO BE 3 1/2" O.D. X 7 GAUGE.
4. SHIP WITH NUTS AND WASHERS PLACED ON BOLTS.



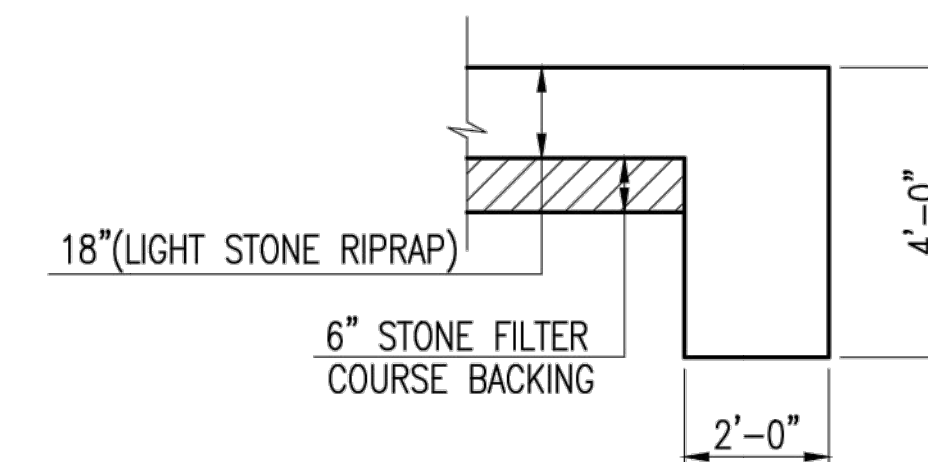
TYPICAL SECTION THRU TOEWALL

NO SCALE

NOTES

1. ALL RIPRAP FOR THIS PROJECT SHALL BE NATURAL STONE. NEITHER BROKEN CONCRETE, FABRIC ENVELOPE, NOR PREMIXED DRY PACKAGED CONCRETE BAG ALTERNATES WILL BE ALLOWED, UNLESS INDICATED OTHERWISE.
2. TOEWALLS SHALL BE INSTALLED ALONG ALL UNPROTECTED EDGES OF STONE RIPRAP.
3. GROUTING OF THE SURFACE OF THE RIPRAP SHALL NOT BE PERFORMED, UNLESS INDICATED OTHERWISE. GROUTING OF THE TOEWALLS SHALL BE PERFORMED PER CITY SPECIFICATIONS.

HEAVY STONE RIPRAP DETAILS



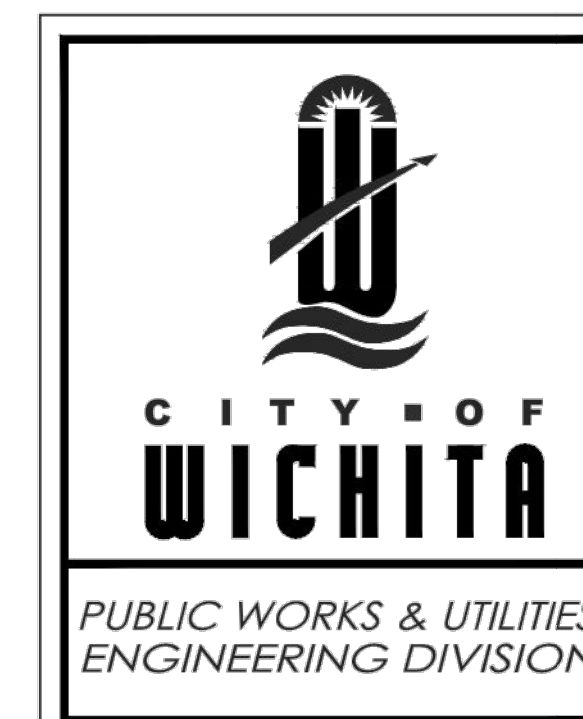
TYPICAL SECTION THRU TOEWALL

NO SCALE

NOTES

1. ALL RIPRAP FOR THIS PROJECT SHALL BE NATURAL STONE. NEITHER BROKEN CONCRETE, FABRIC ENVELOPE, NOR PREMIXED DRY PACKAGED CONCRETE BAG ALTERNATES WILL BE ALLOWED, UNLESS INDICATED OTHERWISE.
2. TOEWALLS SHALL BE INSTALLED ALONG ALL UNPROTECTED EDGES OF STONE RIPRAP.
3. GROUTING OF THE SURFACE OF THE RIPRAP SHALL NOT BE PERFORMED, UNLESS INDICATED OTHERWISE. GROUTING OF THE TOEWALLS SHALL BE PERFORMED PER CITY SPECIFICATIONS.

LIGHT STONE RIPRAP DETAILS



**MISCELLANEOUS
DETAILS
(STORM SEWER)**

CITY ENGINEER

Gary Janzen, P.E.

City Engineer

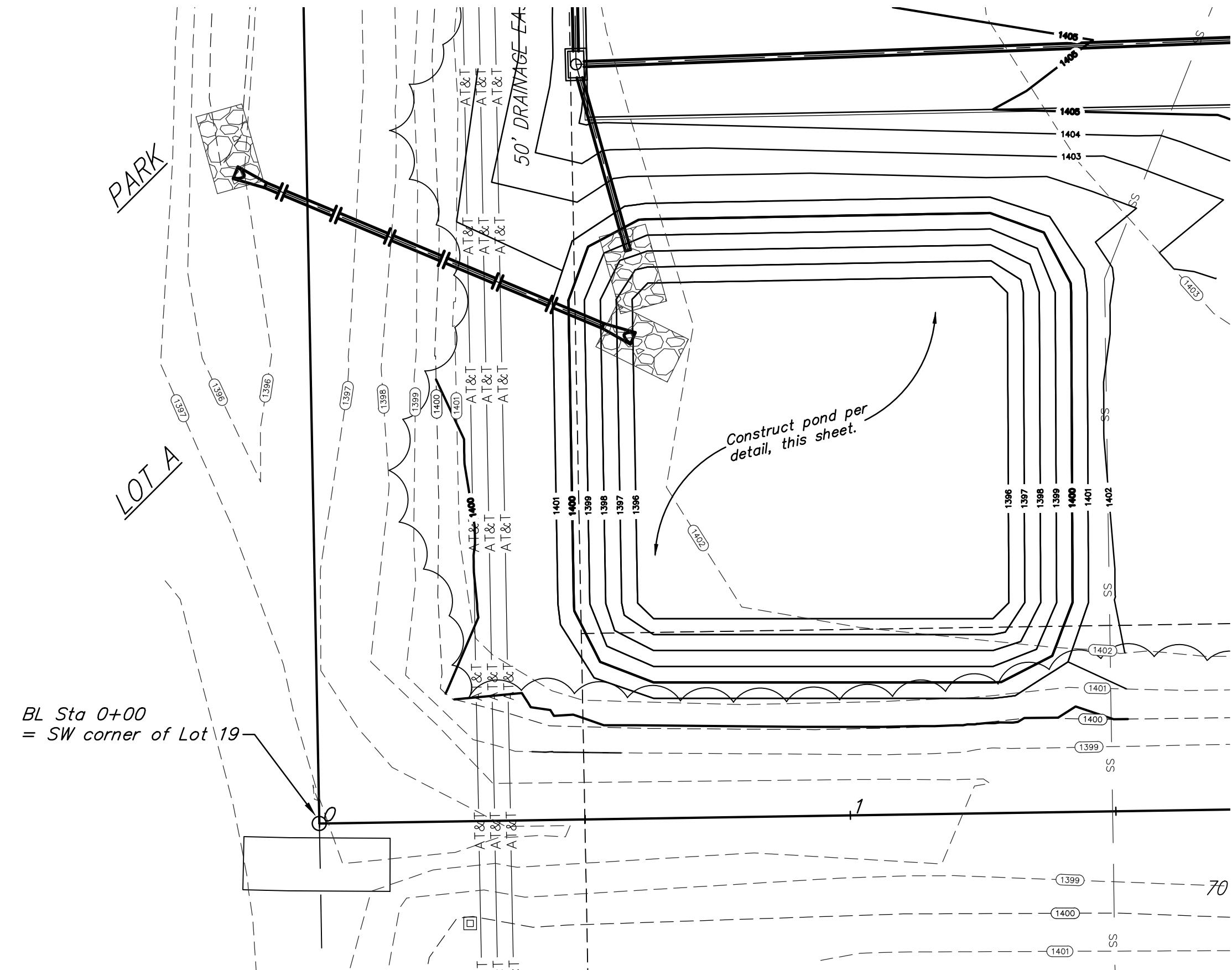
PROJECT NUMBER	OCA NUMBER	DATE
0298 PPD	(607861)	02/15

CITY ENGINEER'S OFFICE
CITY HALL - SEVENTH FLOOR
455 NORTH MAIN STREET
WICHITA, KANSAS 67202-1620
(316) 268-4501

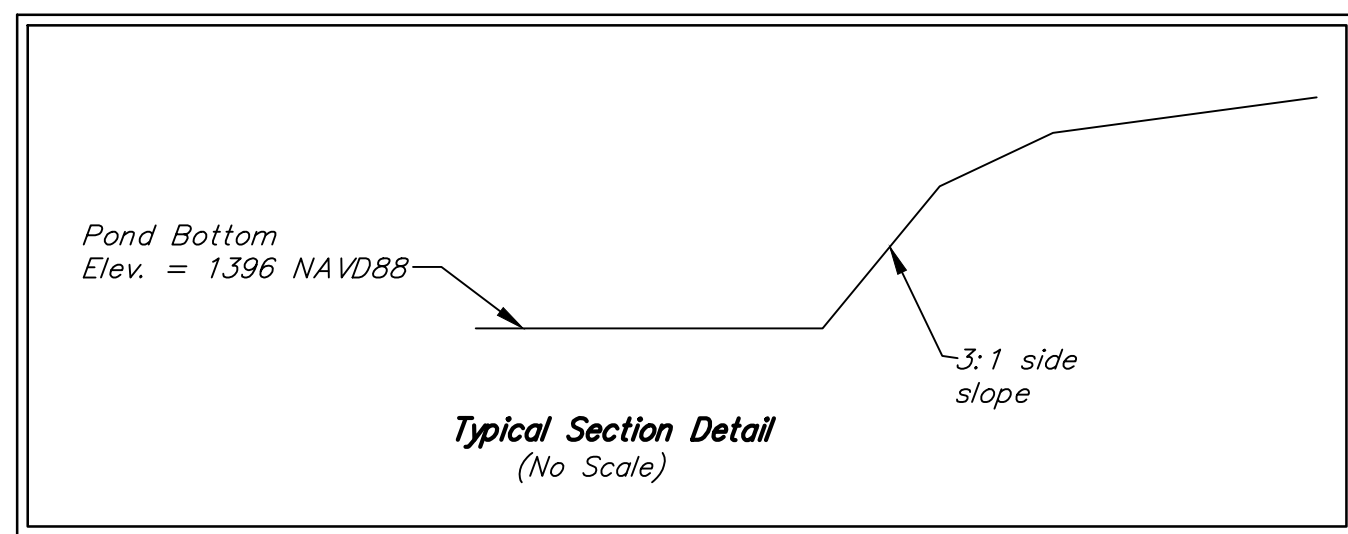
DESIGN
Staff

DRAWN
Staff

SHEET
6 of 14



BL Sta 0+00
= SW corner of Lot 19



NOTES:

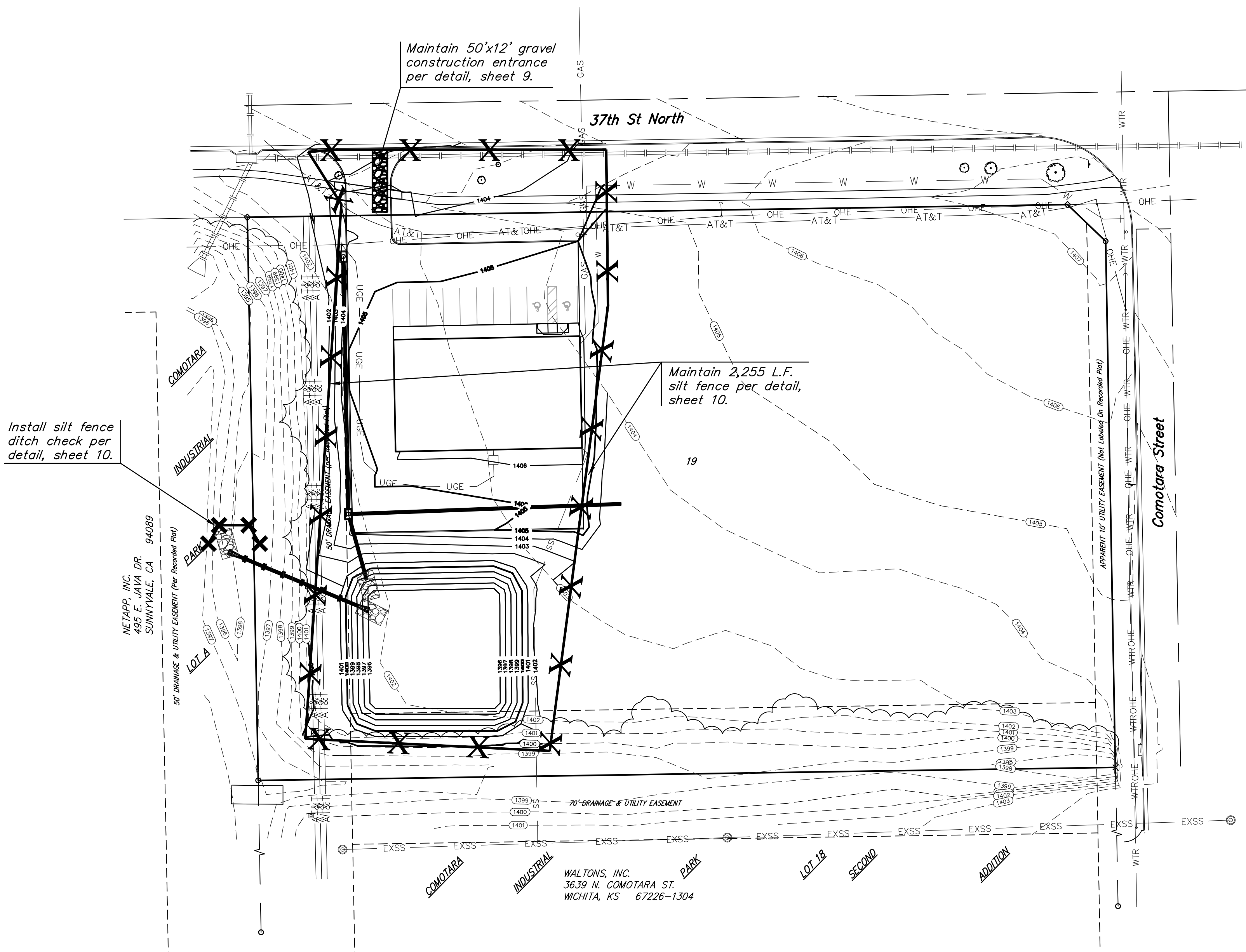
- Any excess excavation shall be stockpiled on-site at an area indicated by the Engineer out of easements and R/W. Area will be staked by Engineer. Additional area will be staked out if needed.
- Contractor to strip top 3" of soil within proposed pond area before pond grading and stockpile. Top soil stockpile to be redistributed around proposed pond prior to seeding.

EARTH WORK TOTALS		
	C.Y. Cut	C.Y. Fill
Pond Construction	1,614	0

Earthwork quantities do not include correction factors and are for reference only. All cost associated with mass grading shall be included in the bid item "Grading, Mass".

---1405--- Existing Grade
 —1405— Proposed Grade

	COMOTARA IND. PARK 2ND LOT 19 DRY DETENTION POND PLAN	
	STORM WATER SEWER IMPROVEMENTS	
<small>Baughman Company, P.A. 315 Ellis St. Wichita, KS 67211 P 316-262-7271 F 316-262-0149 ENGINEERING SURVEYING PLANNING LANDSCAPE ARCHITECTURE</small>		
PROJECT NUMBER 0298 PPD (607861)	DESIGN TJW	DRAWN TMS
REVISIONS:	APPROVED DATE 02/15	SCALE Noted SHEET
		7 OF 14
<small>Plans SWS.dwg 13-10-E973</small>		



Install silt fence ditch check per detail, sheet 10.

Maintain 50'x12' gravel construction entrance per detail, sheet 9.

Maintain 2,255 L.F. silt fence per detail, sheet 10.

NETAPP, INC.
495 E. JAVA DR.
SUNNYVALE, CA 94089

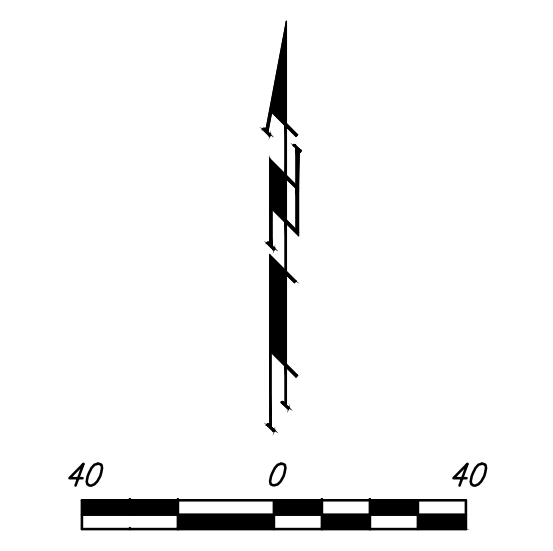
WALTONS, INC.
3639 N. COMOTARA ST.
WICHITA, KS 67226-1304

EROSION CONTROL PLAN LEGEND
(Installation Details Found in the SWP2 Plan)

- DROP INLET PROTECTION
- CURB INLET PROTECTION
- DITCH CHECKS
- SILT FENCING
- CUT-OFF TRENCH
- BACK OF CURB PROTECTION
- EROSION CONTROL MAT
- TEMPORARY DITCH

NO SCALE

--- 1405 --- Existing Grade
 — 1405 — Proposed Grade



EROSION CONTROL MEASURE	INSTALL	MAINTAIN	REMOVE
BACK OF CURB PROTECTION (LF)	0	0	0
CONSTRUCTION ENTRANCE (EA)	0	1	0
CURB INLET BARRIER (EA)	0	0	0
DITCH CHECK (EA)	1	0	0
DROP INLET PROTECTION (EA)	0	0	0
EROSION CONTROL (LS)	0	0	0
EROSION CONTROL BERM (LF)	0	0	0
SILT FENCE (LF)	0	2,255	0
EROSION CONTROL MAT (SY)	0	0	0

QUANTITIES ARE FOR INFORMATION ONLY! CONTRACTOR SHALL VERIFY QUANTITIES PER FINAL BID QUANTITY SHEET.

* ALL EXISTING BMPs INCLUDING CONSTRUCTION ENTRANCE, SEDIMENT BARRIERS, SILT FENCE, CUT-OFF TRENCH, AND EROSION CONTROL MAT SHALL BE MAINTAINED AND REPAIRED IF NECESSARY. REPLACEMENT OR REMOVAL OF EROSION CONTROL MEASURES TO BE PAID FOR BY L.S. BID ITEM "MAINTAIN EXISTING EROSION CONTROL BMPs"

**COMOTARA IND. PARK 2ND LOT 19
GRADING PLAN &
EROSION CONTROL PLAN**
STORM WATER SEWER IMPROVEMENTS

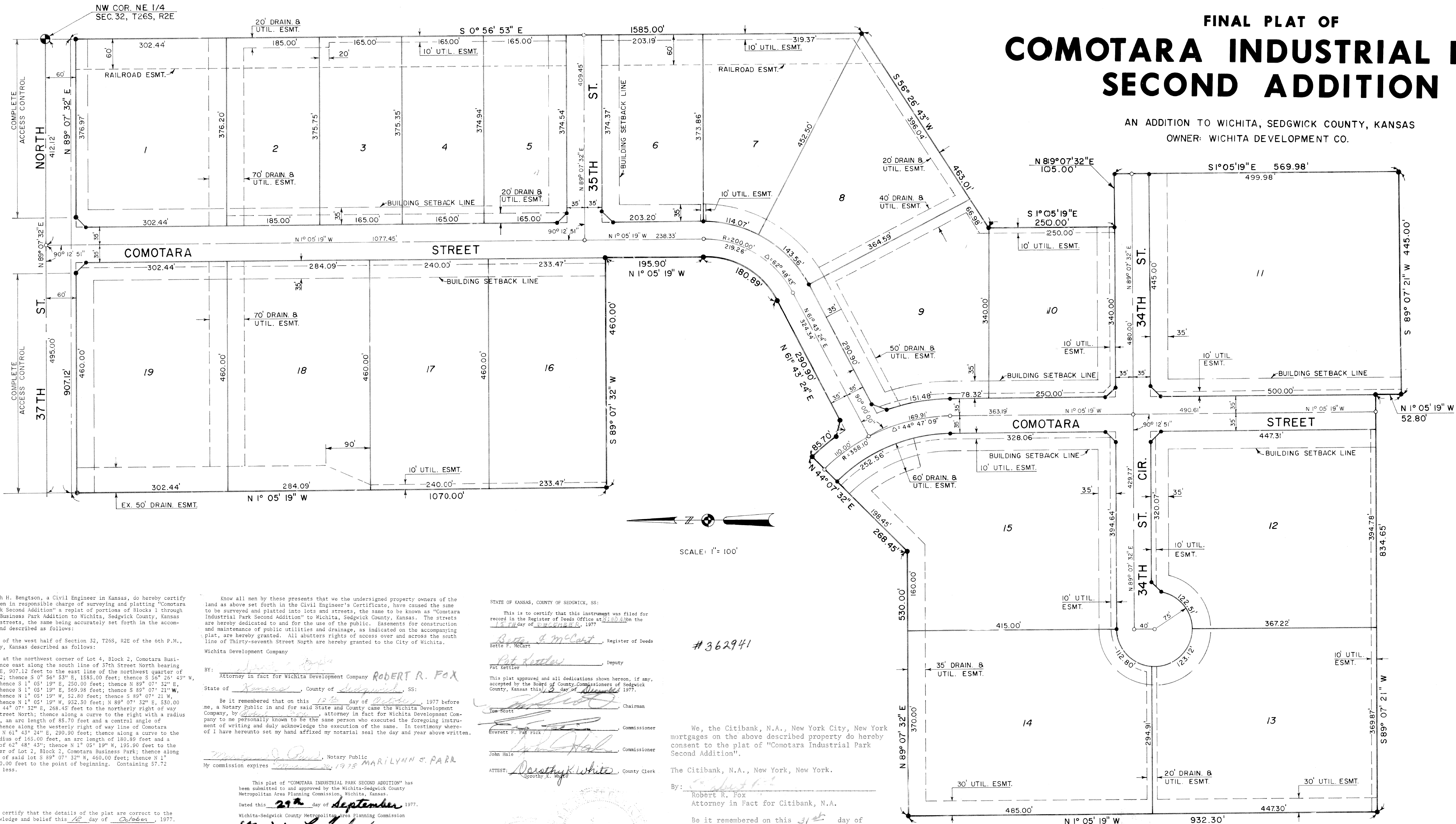
Baughman Company, P.A. 315 Ellis St., Wichita, KS 67211 P 316-262-7271 F 316-262-0149
ENGINEERING | SURVEYING | PLANNING | LANDSCAPE ARCHITECTURE

<small>PROJECT NUMBER</small> 0298 PPD (607861)	<small>DESIGN</small> TJW
<small>REVISIONS:</small>	<small>DRAWN</small> TMS
	<small>APPROVED</small> DATE 02/15
	<small>SCALE</small> Noted
	<small>SHEET</small> 8 OF 14

Plans SWS.dwg 13-10-E973

FINAL PLAT OF COMOTARA INDUSTRIAL PARK SECOND ADDITION

AN ADDITION TO WICHITA, SEDGWICK COUNTY, KANSAS
OWNER: WICHITA DEVELOPMENT CO.



I, Kenneth H. Bengtson, a Civil Engineer in Kansas, do hereby certify that I have been in responsible charge of surveying and platting "Comotara Industrial Park Second Addition" a replat of portions of Blocks 1 through 4 of Comotara Business Park Addition to Wichita, Sedgwick County, Kansas into lots and streets, the same being accurately set forth in the accompanying plat and described as follows:

That part of the west half of Section 32, T26S, R2E of the 6th P.M., Sedgwick County, Kansas described as follows:

Beginning at the northwest corner of Lot 4, Block 2, Comotara Business Park; thence east along the south line of 37th Street North bearing N 89° 07' 32" E, 907.12 feet to the east line of the northwest quarter of said Section 32; thence S 0° 56' 53" E, 1585.00 feet; thence S 56° 26' 43" W, 465.01 feet; thence S 1° 05' 19" E, 250.00 feet; thence N 89° 07' 32" E, 105.00 feet; thence S 1° 05' 19" E, 569.38 feet; thence S 89° 07' 21" W, 445.00 feet; thence N 1° 05' 19" W, 52.80 feet; thence S 89° 07' 21" W, 854.65 feet; thence N 1° 05' 19" W, 532.30 feet; N 89° 07' 32" E, 530.00 feet; thence N 44° 07' 12" E, 268.45 feet to the northerly right of way line of 35th Street North; thence along a curve to the right with a radius of 393.10 feet, an arc length of 85.70 feet and a central angle of 12° 29' 28"; thence along the westerly right of way line of Comotara Street bearing N 61° 43' 24" E, 290.90 feet; thence along a curve to the left with a radius of 165.00 feet, an arc length of 180.89 feet and a central angle of 62° 48' 45"; thence N 1° 05' 19" W, 195.90 feet to the southeast corner of Lot 3, Block 2, Comotara Business Park; thence along the south line of said lot S 89° 07' 32" N, 460.00 feet; thence N 1° 05' 19" W, 1070.00 feet to the point of beginning. Containing 57.72 acres, more or less.

I, hereby certify that the details of the plat are correct to the best of my knowledge and belief this 12th day of October, 1977.

Kenneth H. Bengtson
Engineers - Architects
260 North Rock Road
Wichita, Kansas
KENNETH H. BENGTSON

Know all men by these presents that we the undersigned property owners of the land as above set forth in the Civil Engineer's Certificate, have caused the same to be surveyed and platted into lots and streets, the same to be known as "Comotara Industrial Park Second Addition" to Wichita, Sedgwick County, Kansas. The streets are hereby dedicated to and for the use of the public. Easements for construction and maintenance of public utilities and drainage, as indicated on the accompanying plat, are hereby granted. All abutters rights of access over and across the south line of thirty-seventh Street North are hereby granted to the City of Wichita.

Wichita Development Company

BY: *Robert R. Fox*
Attorney in fact for Wichita Development Company **ROBERT R. FOX**
State of Kansas County of Sedgwick, SS:

Be it remembered that on this 12th day of October, 1977 before me, a Notary Public in and for said State and County came the Wichita Development Company, by Robert R. Fox, attorney in fact for Wichita Development Company to me personally known to be the same person who executed the foregoing instrument of writing and duly acknowledge the execution of the same. In testimony whereof I have hereunto set my hand affixed my notarial seal the day and year above written.

Marilynn J. Parr, Notary Public
My commission expires March 29, 1978 **MARILYNN J. PARR**

This plat of "COMOTARA INDUSTRIAL PARK SECOND ADDITION" has been submitted to and approved by the Wichita-Sedgwick County Metropolitan Area Planning Commission, Wichita, Kansas.
Dated this 29th day of September, 1977.
Wichita-Sedgwick County Metropolitan Area Planning Commission
Marjorie L. Taylor, Chairman
John T. Chanin, Secretary
Robert A. Lakin
This plat approves and all dedications shown hereon, if any, accepted by the City Commission of the City of Wichita, Kansas, this 29th day of NOV, 1977.
Tony Cassado, Mayor
Donald C. Girick, City Clerk

STATE OF KANSAS, COUNTY OF SEDGWICK, SS:

This is to certify that this instrument was filed for record in the Register of Deeds Office at Wichita on the 12th day of October, 1977.

Bette F. McArt, Register of Deeds
Pat Kettler, Deputy
Tom Scott, Chairman
Everett F. Patrick, Commissioner
John Hale, Commissioner
ATTEST: *Deborah K. White*, County Clerk

#362941

We, the Citibank, N.A., New York City, New York mortgages on the above described property do hereby consent to the plat of "Comotara Industrial Park Second Addition".

The Citibank, N.A., New York, New York.

By: *Robert R. Fox*
Attorney in fact for Citibank, N.A.

Be it remembered that on this 31st day of October, 1977 before me, a Notary Public in and for said State and County, came the Citibank, N.A., New York City, New York, by Robert R. Fox, attorney in fact for Citibank, N.A. to be personally known to be the same person who executed the foregoing instrument of writing and duly acknowledge the execution of the same. In testimony whereof I have hereunto set my hand and affixed my Notarial seal the day and year above written.

Marilynn J. Parr, Notary Public
My Commission Expires March 29, 1978 **MARILYNN J. PARR**