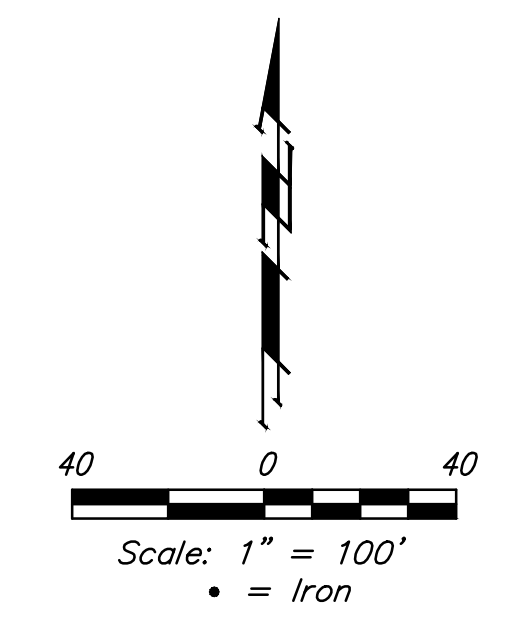
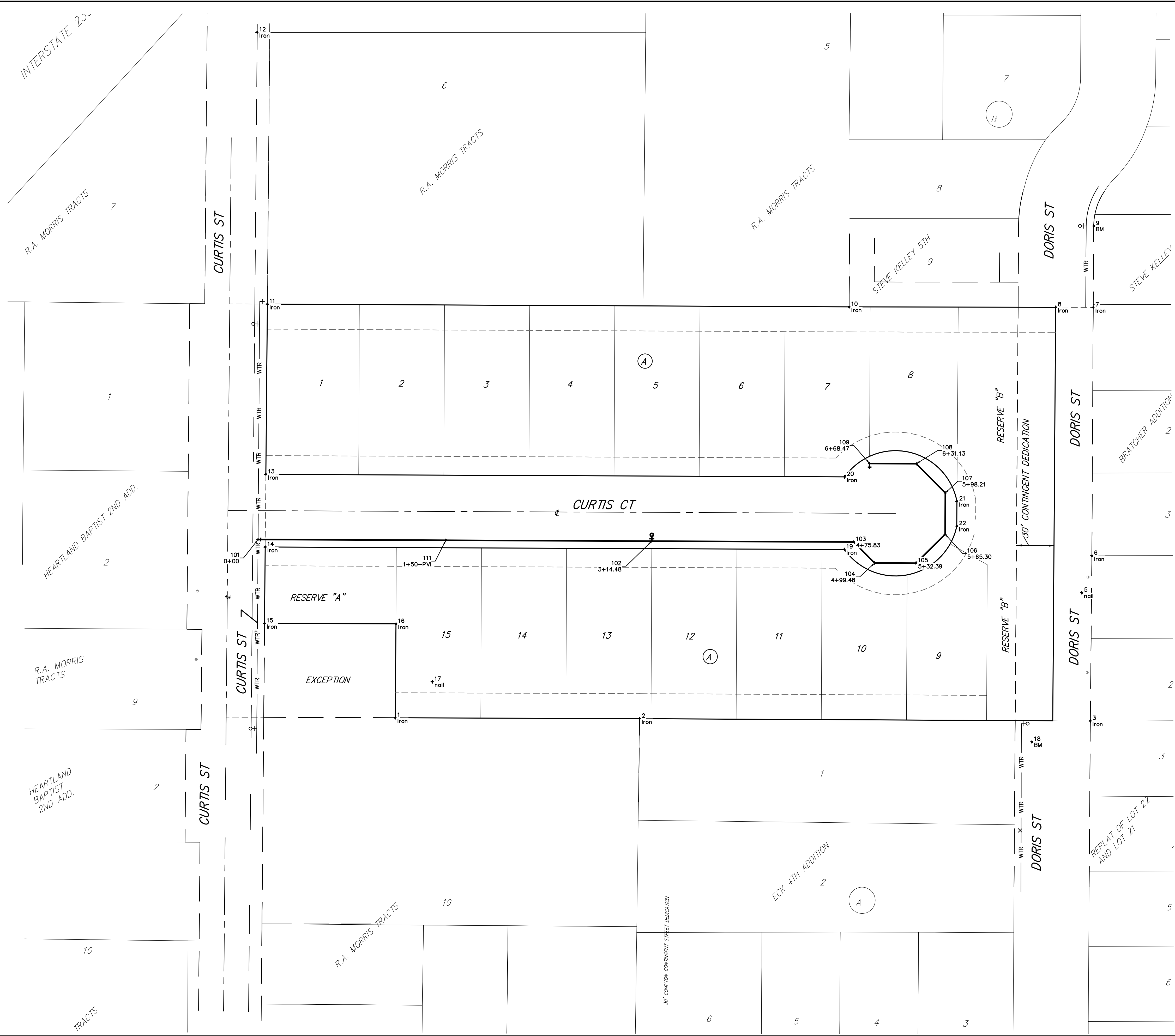


BENCHMARK:
 Square cut top of curb 16"± south
 of SE corner of Reserve "B".
 Elev. = 1315.95 (NAVD88)

Point #	Northing	Easting	Raw Description
1	5384.93	5122.77	Iron
2	5384.20	5317.89	Iron
3	5382.42	5677.95	Iron
5	5484.82	5671.18	nail
6	5514.34	5679.22	Iron
7	5712.71	5680.27	Iron
8	5712.83	5650.27	Iron
9	5777.78	5680.65	BM
10	5713.14	5485.33	Iron
11	5715.38	5020.66	Iron
12	5932.42	5012.56	Iron
13	5579.35	5019.47	Iron
14	5521.36	5018.96	Iron
15	5460.32	5018.42	Iron
16	5459.93	5123.42	Iron
17	5413.76	5152.43	nail
18	5365.76	5631.30	BM
19	5519.38	5481.48	Iron
20	5577.38	5481.73	Iron
21	5557.73	5571.42	Iron
22	5538.00	5571.28	Iron
101	5527.38	5013.23	0+00
102	5526.04	5327.71	3+14.48
103	5525.35	5489.06	4+75.83
104	5508.55	5505.71	4+99.48
105	5508.41	5538.62	5+32.39
106	5531.58	5561.99	5+65.30
107	5564.49	5562.13	5+98.21
108	5587.86	5538.96	6+31.13
109	5588.02	5501.62	6+68.47
111	5526.74	5163.23	1+50-PVI



	JBAR ADDITION COORDINATES Water Distributions System	
	<small>Baughman Company, P.A. 315 Ellis St. Wichita, KS 67211 P 316-262-7271 F 316-262-0149 ENGINEERING SURVEYING PLANNING LANDSCAPE ARCHITECTURE</small>	
PROJECT NUMBER 448-90664	DESIGN AEG	DRAWN JAK
REVISIONS:	APPROVED	DATE 2/15
	SCALE Noted	SHEET 11 OF 12

E:\Projects\JBAR Addition 14-06-P052\Engineering\Phase 1\Wtr_1412-E190\WTR PLANS.dwg