

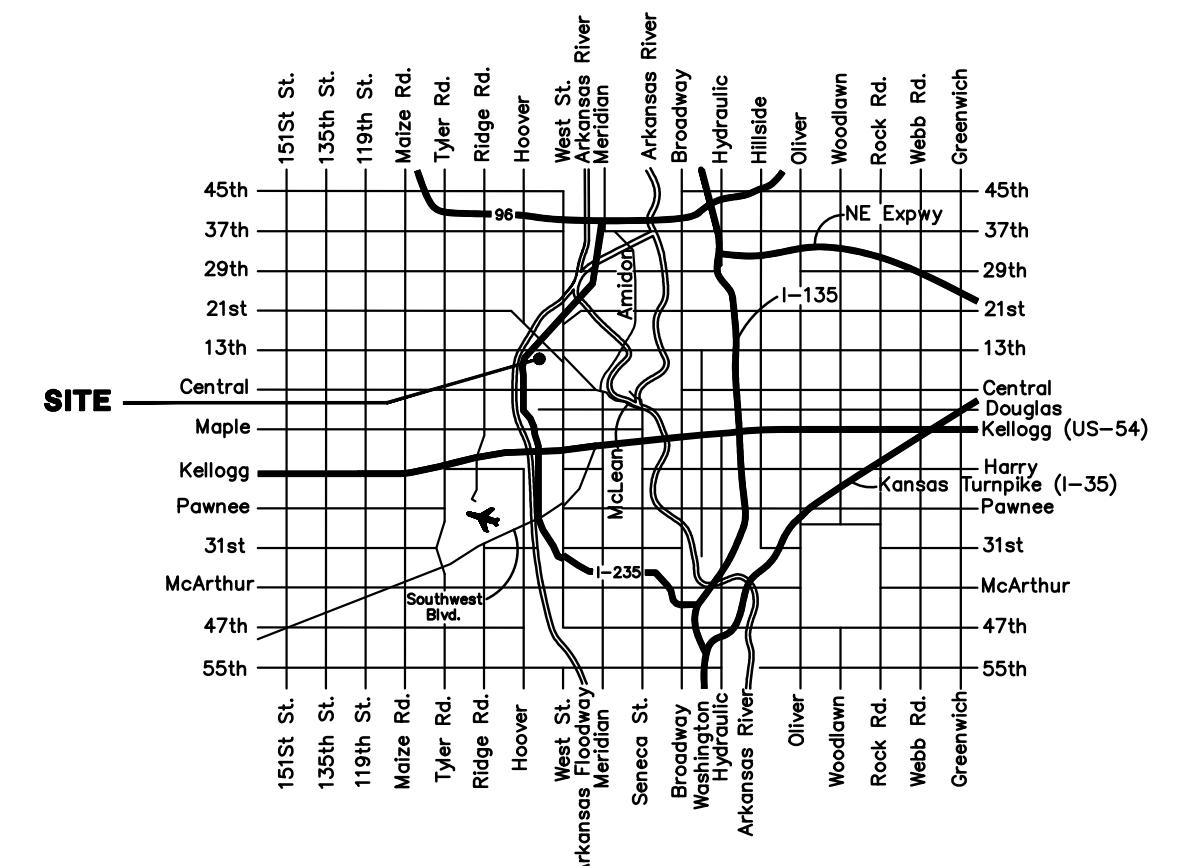
# Lateral 227, Main 5, Sanitary Sewer # 22 SANITARY SEWER IMPROVEMENTS

to serve

## JBAR ADDITION CITY OF WICHITA, KANSAS

Gary Janzen, P.E. City Engineer  
Project Number  
468 - 85024  
OCA Number  
744390

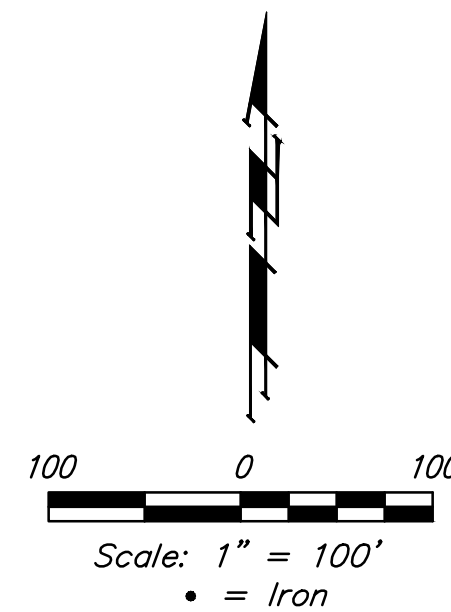
Dutton Construction - Contractor  
G. Baalman - City of Wichita, Field Project Engineer  
L Wilson - City of Wichita, Inspector  
As-built  
Stub  
Release Date: 7/21/2015  
pdf: APRosas 7/29/2015



VICINITY MAP

### GENERAL NOTES:

- Contractor will be required to provide notice to utility companies a minimum of forty-eight (48) hours prior to any excavation, as follows:  
  
Kansas One-Call 687-2470  
  
The Contractor must notify the following in case of an emergency:  
  
Cox Communications 262-4270  
Kansas Gas Service 1-888-482-4950  
Westar Energy 383-8650  
Aquila Energy 1-800-303-0357  
AT&T 268-2245  
City of Wichita Water Dept. 268-4563  
City of Wichita Sewer Maint. 268-4024  
City of Wichita Storm Sewer Maint. 268-4090  
City of Wichita Traffic Maint. 268-4034  
Conoco Phillips Pipeline Co. 1-877-267-2290  
Southern Star Pipeline Co. 529-6600  
Kinder-Morgan Pipeline Co. 1-888-844-5658
- Utility service lines, poles, valve boxes, meters, and etcetera are to be adjusted as necessary by others prior to construction unless the plans specifically call for their adjustment by the Contractor or unless the plans specifically identify a utility to be adjusted by its owner during construction. Existing utilities and their location, as shown on the plans, represent the best information obtainable for design. The Contractor will be required to work around existing utilities within the right-of-way which do not conflict with proposed construction.
- Rubble from the removal of miscellaneous structures and excess excavation which is to be wasted shall be disposed of on sites to be provided by the Contractor. These sites shall be approved by the Engineer as to suitability, appearance and site location. Locations, in the opinion of the Engineer, that will leave an unsightly appearance will not be approved. All disposal sites must be approved by the Kansas Department of Health and Environment. Material either stockpiled or disposed of in a flood plain would require a Kansas State Board of Agriculture permit. Any material dumped in waters of the United States or wetlands is subject to U.S. Corps. of Engineers permitting regulations. Any material buried or stockpiled beyond approved construction limits would require additional archaeological investigations unless buried in a previously approved borrow location.
- Trees and shrubs in public right-of-way which are in direct conflict with proposed new construction shall be removed by the Contractor with the Engineer's approval. Trees and shrubs which are not in direct conflict with proposed new construction shall be saved and protected from damage.
- The Contractor shall give all property owners and/or tenants of developed property abutting the construction of this project a minimum of ten (10) days notice prior to start of construction.
- The Contractor shall be responsible for preserving property irons. The Contractor will be required to re-establish any property irons which are damaged or destroyed by his construction operations. Such irons shall be re-established by a licensed land surveyor in accordance with state laws.
- All existing and proposed erosion control measures including silt fencing, erosion control mat, straw bales, inlet barriers, and const. entrance shall be maintained throughout construction by the contractor and until project is accepted by the City of Wichita. The on-site engineer shall complete weekly reports on the status of erosion control measures. The contractor shall be required to comply with maintenance and/or replacement of erosion control measures as determined by the on-site engineer until project is accepted by City of Wichita. Maintenance and/or replacement of erosion control measures to be paid by L.S. bid item "Maintain Existing BMP's."
- All excess excavation shall remain on-site and shall be stockpiled or spread at a location determined by the engineer.
- The Contractor shall be responsible for maintaining continuous flow of sewage through construction. Contractor's proposed method for maintaining sewage flow shall be approved by the Engineer. Cost of maintaining flow of sewage through construction will not be paid for directly and this cost shall be considered as subsidiary to the other pay items of work.
- The Contractor shall be responsible for maintaining continuous flow of sewage through construction. Contractor's proposed method for maintaining sewage flow shall be approved by the Engineer. Cost of maintaining flow of sewage through construction will not be paid for directly and this cost shall be considered as subsidiary to the other pay items of work.
- All areas within Lot 9, Steve Kelly 5th Addition, Lot 1, Block A, Eck 4th Addition, and the Exception disturbed during construction shall be seeded, mulched, and fertilized as follows (Permanent Seeding):  
  
Seed: Kansas Premium Fescue Blend: 8 lbs./1000 sq. ft.  
Mulch: Prairie Hay: 2 tons/acre (in areas not covered by erosion control blanket)  
Fertilizer: 12-24-12: 850 lbs./acre  
  
All other areas disturbed during construction shall be see as follow (Temporary Seeding):  
  
Seed: Rye grass (PLS)--8 lbs./1000 Sq. Ft.  
All areas disturbed during construction shall be All areas disturbed during construction shall be seeded as follows (Temporary Seeding):  
  
Seed: Ryegrass: 5 lbs./1000 sq. ft.  
  
All costs associated with seeding shall be included in bid item "Seeding". All seeding operations shall conform to City of Wichita Standard Specifications.
- The Developer for this project is Jay Russell and may be reached at (316) 722-2417.

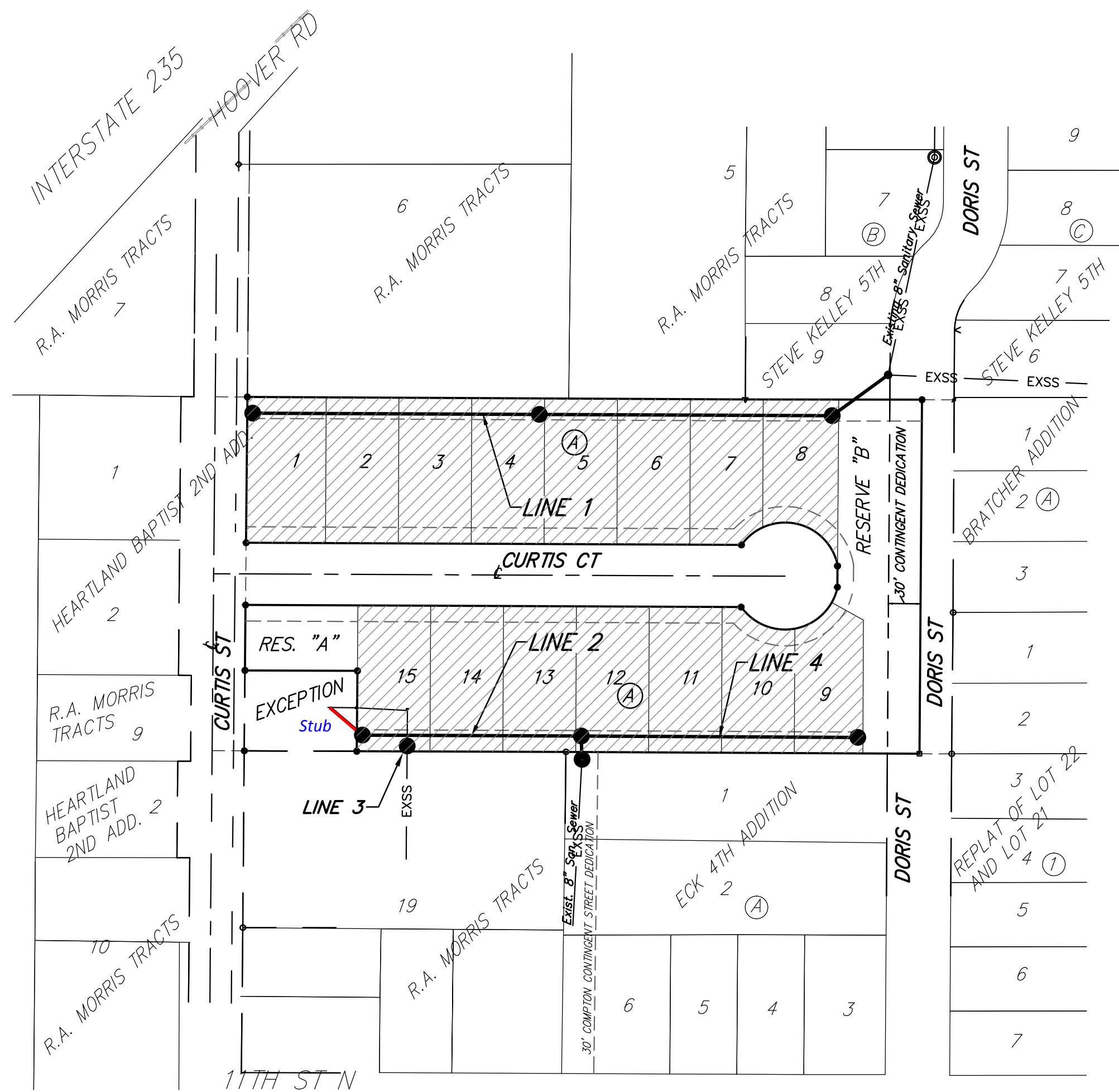


### BENCHMARKS

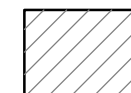
Square cut top of curb 16± south of SE corner of Reserve "B".  
Elev. = 1315.95 (NAVD88)

### SHEET INDEX

Title Sheet	1
Line 1	2
Line 2, Line 3, & Line 4	3
Erosion Control Plan	4
Erosion Control BMP Details	5-9
Standard Manhole Detail	10
Ring & Cover Detail	11
Coordinate Sheet	12
Copy of Plat	13



BENEFIT DISTRICT



Baughman Company, P.A. 315 Ellis St. Wichita, KS 67211 P 316-262-7271 F 316-262-0145  
ENGINEERING | SURVEYING | PLANNING | LANDSCAPE ARCHITECTURE