

SWS IMPROVEMENTS TO SERVE MESSIAH BAPTIST CHURCH 4TH ADDITION

Private Project Number: 0283 PPD (607861)

CITY OF WICHITA, KANSAS

Gary Janzen, P.E. City Engineer

November, 2014

Index

Sewer Cover Sheet	1
Storm Sewer Plan/Profile Sheet	2
P Manhole Detail	3
Grading Plans	4-5
Erosion Details Available on-line at: http://wichita.gov/Government/Departments/PWU/Pages/Regulations.aspx	

GENERAL NOTES:

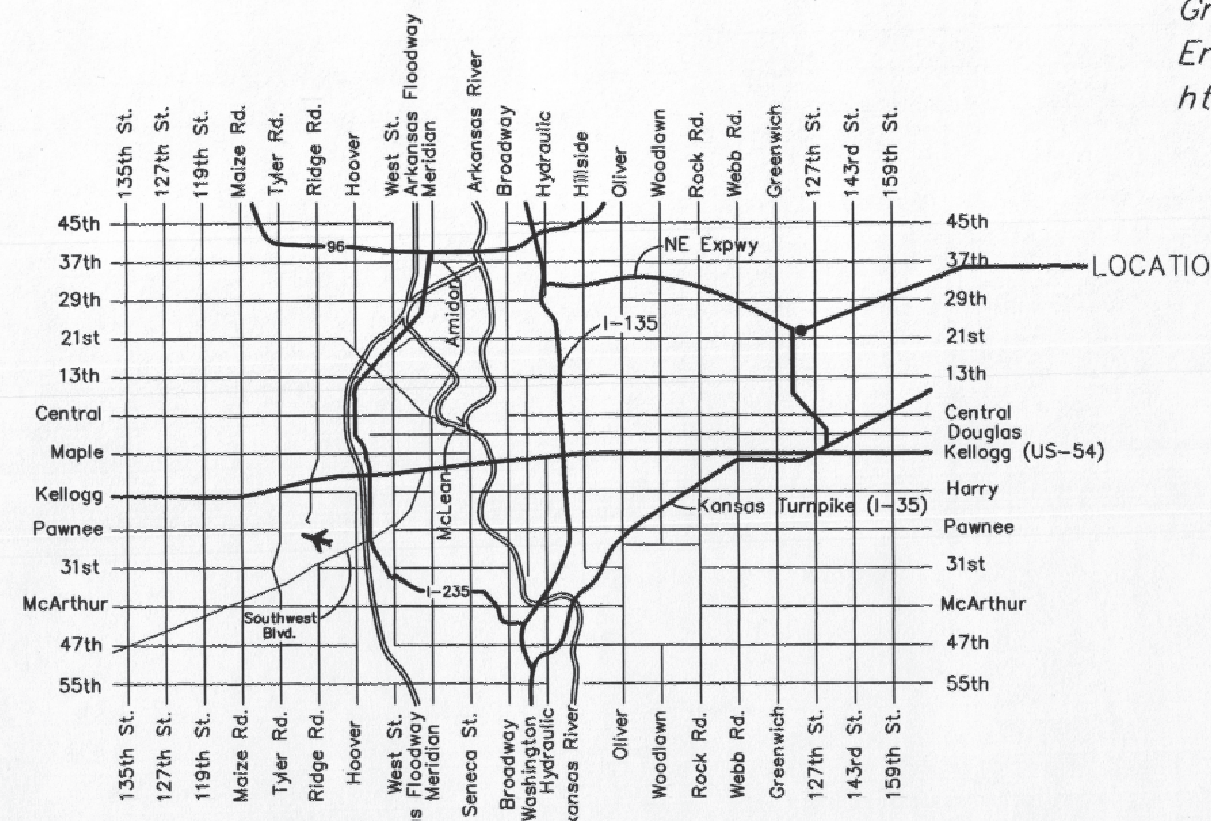
- Contractor will be required to provide notice to utility companies a minimum of twenty-four (24) hours prior to any excavation, as follows:

Kansas One-Call	687-2470
-----------------	----------

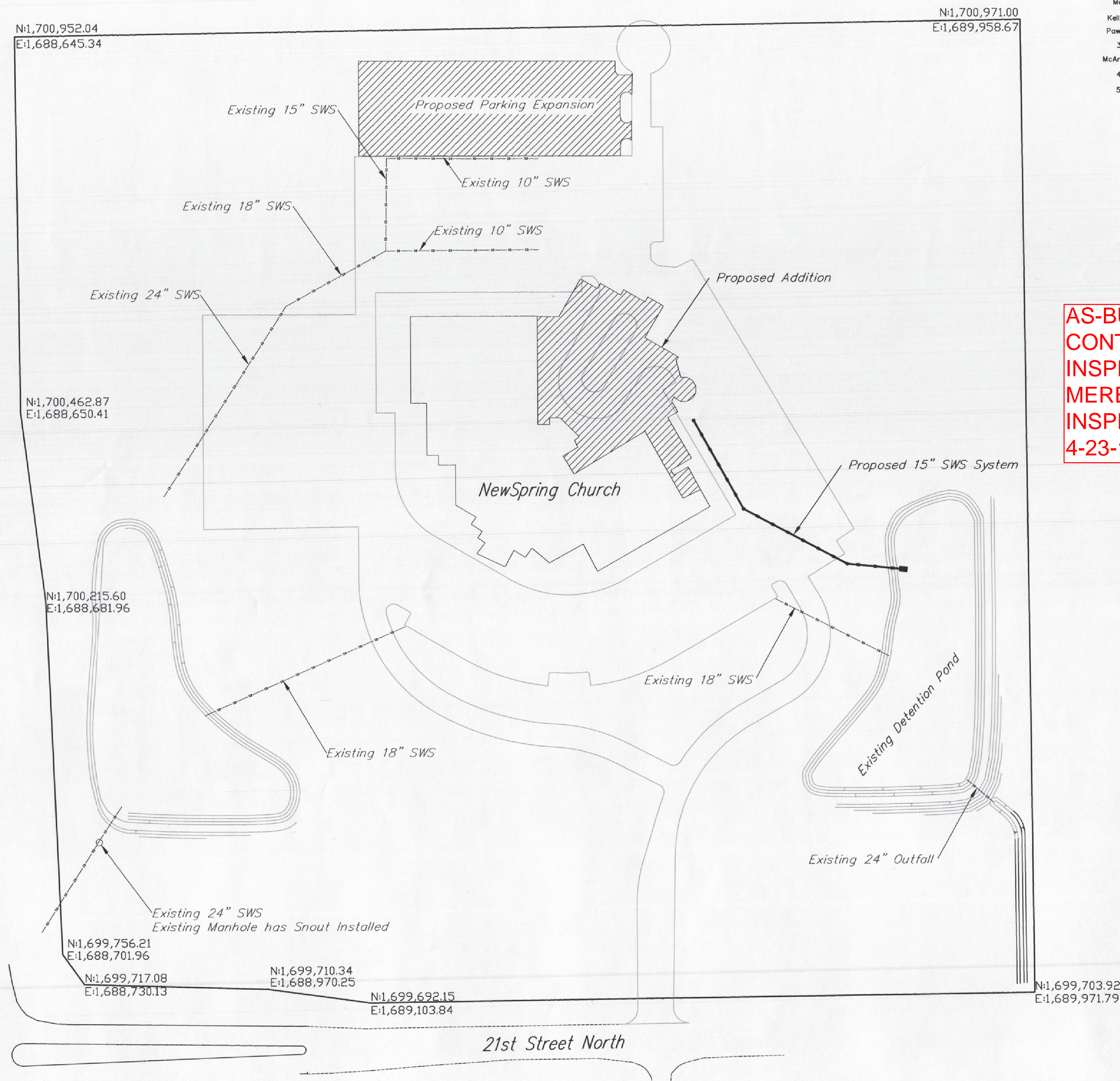
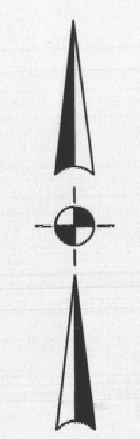
The Contractor must notify the following in case of an emergency:

Cox Communications, Inc.	262-0661
K.G.E. Electric Service	383-8650
Kansas Gas Service	383-8600
Peoples Gas Company	942-8350
Southwestern Bell Telephone Company	1-571-2611
City of Wichita Water Dept.	268-4908
City of Wichita Traffic Engineering	269-4446
- Contractor shall contact Merestone Surveying for project coordinate control and additional staking information prior to proceeding with the staking and layout of the project in the field.
- Contractor shall not start work on the project until the project inspector is assigned to the project and is present on the site. Any work done without inspection will be required to be uncovered for inspection.
- All disturbed areas not intended for pavement or sidewalk construction shall be seeded with Kansas Premium Fescue Blend at a rate of 8 lb./1000 Sq. Ft., fertilized with a 16-20-6 ratio at a rate of 4 lb./1000 Sq. Ft., and mulched with Prairie Hay at a rate of 92 lb./1000 Sq. Ft. Mulch shall be "patted" with forks or punched into soil to reduce loss due to wind.
- Rubble from the removal of miscellaneous structures and excess excavation which is to be wasted shall be disposed of on sites to be provided by the Contractor. These sites shall be approved by the Engineer as to suitability, appearance and site location. Locations that, in the opinion of the Engineer, will leave an unsightly appearance will not be approved.

**AS-BUILT PLANS
CONTRACTOR: B2 EXCAVATING
INSPECTION FIRM:
MERESTONE SURVEYING, LLC
INSPECTOR: BRIAN PELTIER
4-23-15**

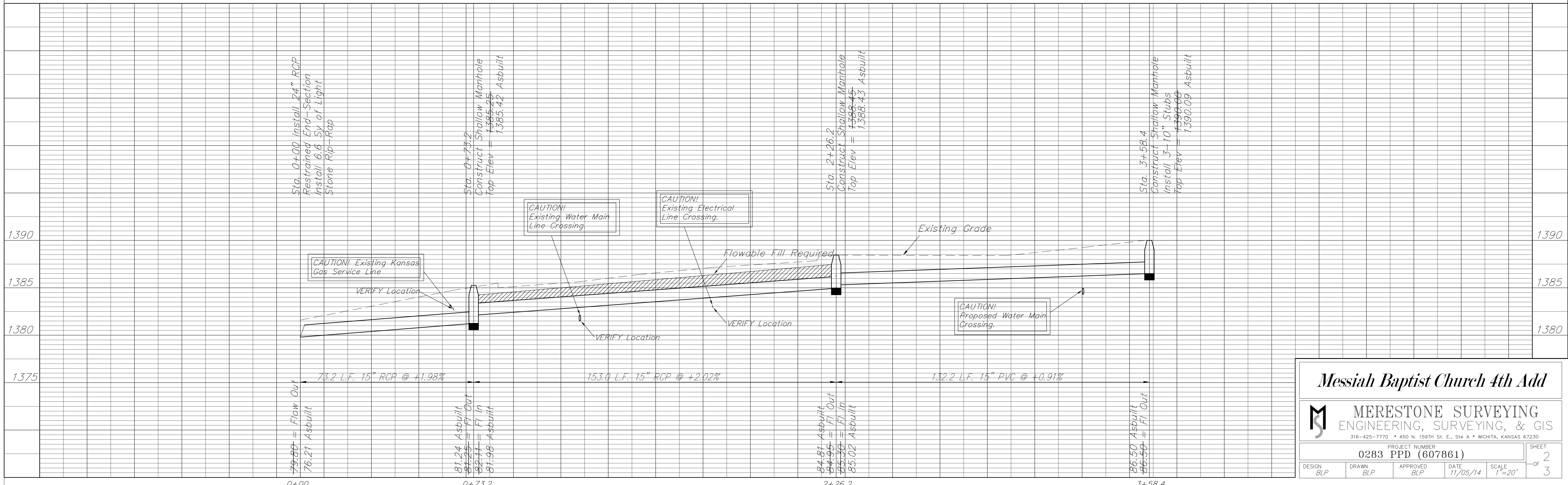
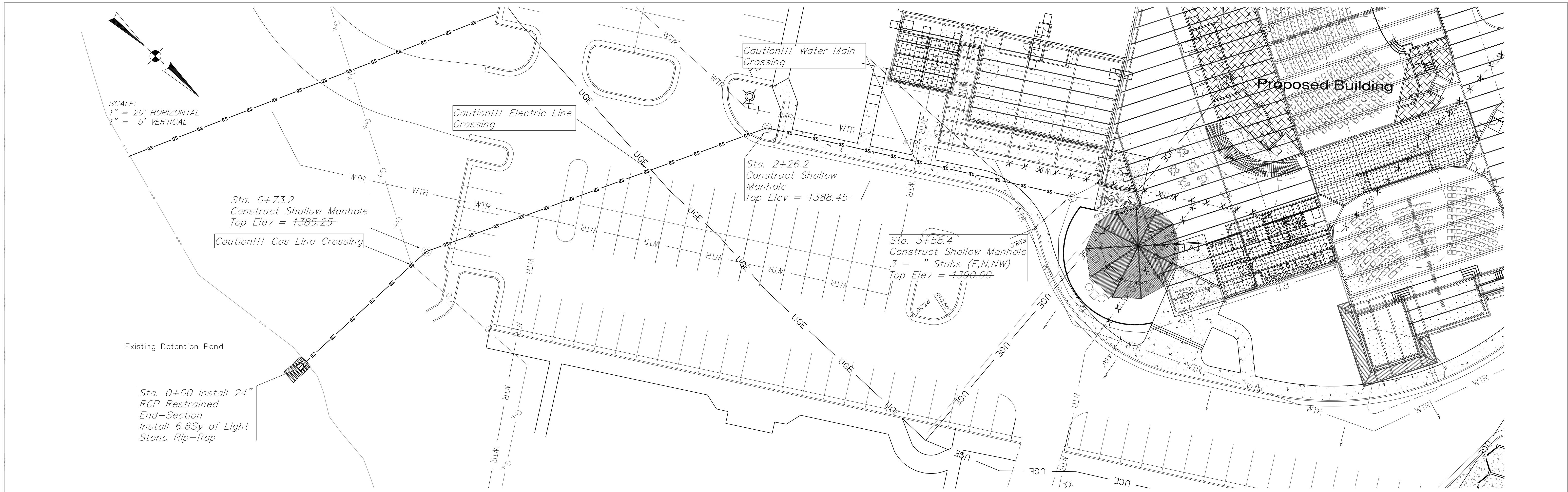


Vicinity Map



Storm Water Certification:
 These construction plans were prepared in accordance with the current Storm Water Management Regulations as set forth in the City of Wichita's Storm Water Management Ordinance 16.32 and the policies/guidelines presented in the Wichita/Sedgwick County Storm Water Manual.
 Disturbed Area = 2.3 ac.
 Water Quality Treatment: Provided by pond and dry detention.
 Downstream Channel Protection: Provided by pond

APPROVED AS NOTED
 BY CITY ENGINEER OF WICHITA
 Engineering Rebecca Dail 11/2/14
 Storm Drainage Jim Hartley 11/2/14
 NOTE TO CONTRACTORS
 Installation, Inspection and Testing for this project is to be provided by a Licensed Consulting Engineering Firm under contract with the Owner/Developer. Said inspection to be in accordance with the City of Wichita Standard Construction Engineering Practices and certified by a Licensed Professional Engineer. No work shall be performed in dedicated easements or public right-of-way by the Contractor without such inspection nor shall any work be commenced without written authorization by the City Engineer. All Construction and Materials shall comply with the City of Wichita Specifications and Standards (on file and available in the City Engineer's Office).



Messiah Baptist Church 4th Add

MERESTONE SURVEYING
ENGINEERING, SURVEYING, & GIS
316-425-7770 • 450 N. 159TH ST. E., Ste A • WICHITA, KANSAS 67230

PROJECT NUMBER
0283 PPD (607861)

DESIGN BLP DRAWN BLP APPROVED BLP DATE 11/05/14 SCALE 1"=20'

SHEET 2 OF 3