

### GENERAL NOTES

- UNLESS SHOWN OR STATED OTHERWISE ON THESE DRAWINGS, MATERIALS AND CONSTRUCTION SHALL BE IN ACCORDANCE WITH CITY OF WICHITA STANDARD SPECIFICATIONS AND SPECIAL PROVISIONS.
- CONTRACTOR WILL BE REQUIRED TO PROVIDE A MINIMUM ADVANCE NOTICE OF SEVENTY-TWO (72) HOURS TO UTILITY COMPANIES PRIOR TO STARTING ANY EXCAVATION AS FOLLOWS:

KANSAS ONE-CALL 1-800-344-7233  
OR LOCAL (WICHITA) 687-2470

THE CONTRACTOR MUST NOTIFY THE FOLLOWING IN CASE OF EMERGENCY:

AT&T (TELECOMMUNICATIONS)	268-2008
CITY OF WICHITA PUBLIC WORKS & UTILITIES	262-6000
COX COMMUNICATIONS (CABLE)	262-0661
KANSAS GAS SERVICE (GAS)	832-3101
SBC (TELEPHONE)	800-870-8390
WESTAR (ELECTRIC)	383-8600

- THE CONTRACTOR SHALL BE RESPONSIBLE FOR PRESERVING PROPERTY IRONS. THE CONTRACTOR WILL BE REQUIRED TO RE-ESTABLISH ANY PROPERTY IRONS WHICH ARE DAMAGED OR DESTROYED BY HIS CONSTRUCTION OPERATIONS. SUCH IRONS SHALL BE RE-ESTABLISHED BY A LICENSED LAND SURVEYOR IN ACCORDANCE WITH STATE LAWS.
- EXISTING UTILITIES AND THEIR LOCATIONS, AS SHOWN ON THE PLANS REPRESENT THE BEST INFORMATION OBTAINABLE FOR DESIGN. LOCATION INFORMATION HAS BEEN OBTAINED FROM THE VARIOUS UTILITY COMPANIES AND IS EITHER FROM COMPANY RECORD DRAWINGS OR COMPANY PROVIDED FIELD LOCATIONS. THE PLAN LOCATIONS SHOWN ARE NOT GUARANTEED. ADDITIONAL EXISTING UTILITIES MAY ALSO BE ENCOUNTERED.
- RUBBLE FROM THE REMOVAL OF MISCELLANEOUS STRUCTURES AND EXCESS EXCAVATION WHICH IS TO BE WASTED SHALL BE DISPOSED OF ON SITES TO BE PROVIDED BY THE CONTRACTOR. THESE SITES SHALL BE APPROVED BY THE ENGINEER AS TO SUITABILITY, APPEARANCE AND SITE LOCATION. LOCATIONS THAT, IN THE OPINION OF THE ENGINEER, WILL LEAVE AN UNSIGHTLY APPEARANCE WILL NOT BE APPROVED. ALL DISPOSAL SITES MUST BE APPROVED BY THE KANSAS DEPARTMENT OF HEALTH AND ENVIRONMENT. MATERIAL EITHER STOCKPILED OR DISPOSED OF IN A FLOOD PLAIN WOULD REQUIRE A KANSAS STATE BOARD OF AGRICULTURE PERMIT. ANY MATERIAL DUMPED IN WATERS OF THE UNITED STATES OR WETLANDS IS SUBJECT TO U.S. CORPS OF ENGINEERS PERMITTING REGULATIONS. ANY MATERIAL BURIED OR STOCKPILED BEYOND APPROVED CONSTRUCTION LIMITS WOULD REQUIRE ADDITIONAL ARCHAEOLOGICAL INVESTIGATIONS UNLESS BURIED IN A PREVIOUSLY APPROVED BORROW LOCATION.
- COST OF EXCAVATION, HAULING, AND DUMPING OF EXCESS EXCAVATION SHALL BE SUBSIDIARY TO THE PROJECT.
- ALL STUBS AND PLUGGED PIPES SHALL BE LOCATED WITH GREEN PLASTIC TAPE IN THE SAME MANNER AS RISERS.
- CONNECTING TO EXISTING MANHOLES: PRIOR TO LAYING SEWER LINES USING EXISTING STUBS IN EXISTING MANHOLES, THE CONTRACTOR SHALL EXPOSE AND VERIFY THE ELEVATION, GRADE AND ALIGNMENT OF EXISTING STUBS AND NOTIFY THE ENGINEER OF ANY DEVIATION FROM THE PLAN. WHERE CONNECTION TO AN EXISTING MANHOLE THAT DOES NOT HAVE AN EXISTING STUB OR THE STUB IS UNUSABLE DUE TO ELEVATION GRADE OR ALIGNMENT, THE CONTRACTOR SHALL BORE CUT INTO EXISTING MANHOLE WALL TO MAKE CONNECTION USING APPROVED WATER STOP GASKET, AND RESHAPE THE EXISTING MANHOLE INVERT TO PROVIDE SMOOTH FLOW. THE COST OF CONNECTING TO EXISTING MANHOLES IS INCIDENTAL TO THE PROJECT.
- TREES AND SHRUBS IN PUBLIC RIGHT-OF-WAY WHICH ARE IN DIRECT CONFLICT WITH PROPOSED NEW CONSTRUCTION SHALL BE REMOVED BY THE CONTRACTOR WITH THE ENGINEER'S APPROVAL. TREES AND SHRUBS WHICH ARE NOT IN DIRECT CONFLICT WITH PROPOSED NEW CONSTRUCTION SHALL BE SAVED AND PROTECTED FROM DAMAGE.
- ALL DISTURBED AREAS TO BE SEEDED WITH RYE GRASS AT A RATE OF 200 LBS. PER ACRE WITHIN 10 DAYS OF CONSTRUCTION. CONTRACTOR TO PREPARE GROUND PER CITY SPECIFICATIONS. COST IS SUBSIDIARY TO SITE PREPARATION AND RESTORATION.
- PORTIONS OF THE WORK ON THIS PROJECT ARE IN PROXIMITY TO EXISTING UNDERGROUND UTILITIES AND ABOVE GROUND UTILITY APPURTENANCES, AS WELL AS WITHIN DEVELOPED LOTS WITH FENCES AND GRASS. THE CONTRACTOR SHALL CONTACT EACH AFFECTED UTILITY COMPANY AND SHALL ACCOMMODATE/SUPPORT UTILITY FACILITIES AS REQUIRED AND RE-ESTABLISH GRASSED AREA DISTURBED BY CONSTRUCTION WITH THE SAME TYPE OF VEGETATION CURRENTLY ESTABLISHED. THE COST OF UTILITY ACCOMMODATION SHALL NOT BE A PAY ITEM, BUT WILL BE CONSIDERED SUBSIDIARY TO THE COST OF INSTALLING SANITARY SEWER PIPE. THE COST OF REMOVAL AND REPLACEMENT OF EXISTING FENCES AND VEGETATION SHALL NOT BE A PAY ITEM, BUT WILL BE CONSIDERED SUBSIDIARY TO THE COST OF SITE CLEARING AND RESTORATION.
- DEVELOPER FOR THIS PROJECT IS:  
GEORGE LAHAM  
LAHAM DEVELOPMENT  
150 N. MARKET  
WICHITA, KS 67202  
(316) 292-3950
- FOLLOW THE LINK BELOW FOR DETAILS ON SPECIFIC CITY OF WICHITA STANDARD DETAILS: <http://www.wichita.gov/Government/Departments/PWU/StandardsConstruction>

### SANITARY SEWER TO SERVE

# BRADLEY FAIR GUEST SERVICES

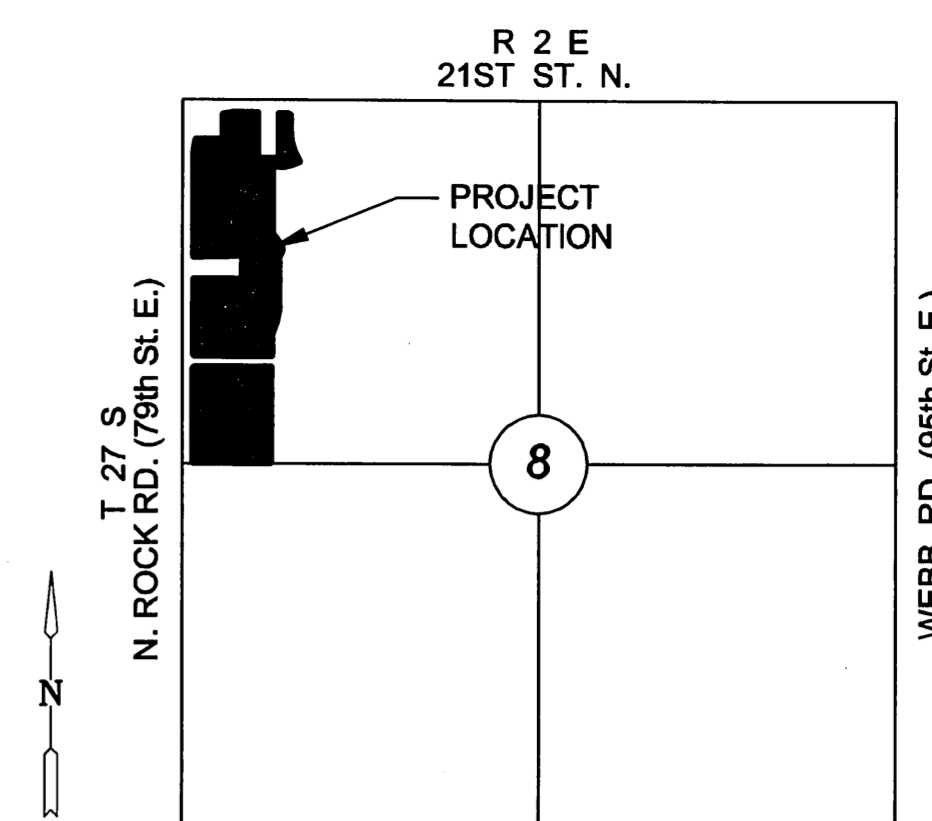
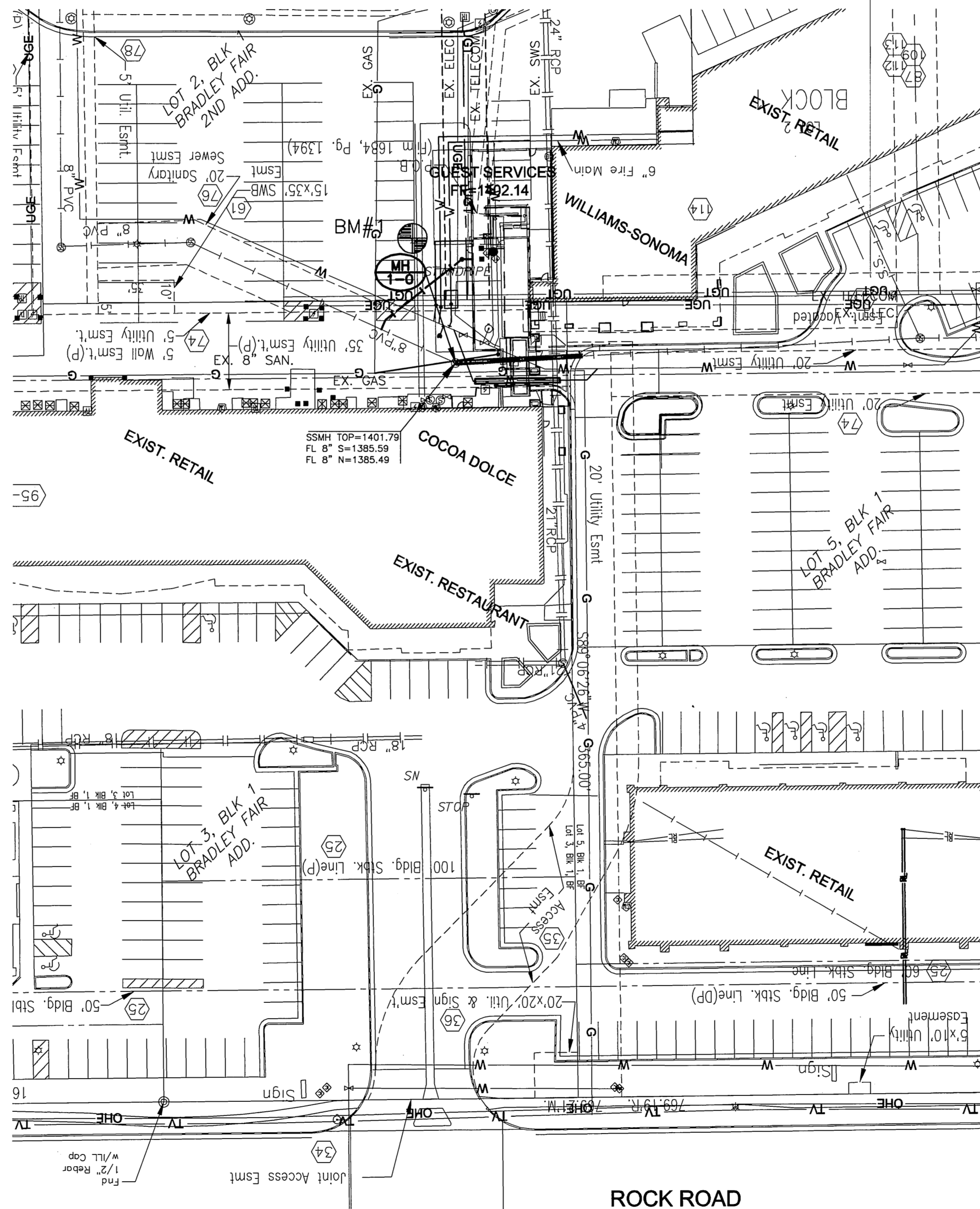
ADJUSTMENT TO LATERAL 69, MAIN 22, W.I.S.

PROJECT NO. 2212PPS

THE CITY OF WICHITA, KANSAS  
GARY JANZEN, P.E. - CITY ENGINEER

OCA NO. 607861

T. Mason - City of Wichita, Inspector  
Release Date: 5/8/2015  
: APROsas 5/14/2015



VICINITY MAP  
No Scale

### INDEX TO DRAWINGS

SHEET NO.	DESCRIPTION
01	TITLE SHEET
02	LINE 1

SEE GENERAL NOTES #13 FOR CITY OF WICHITA STANDARD BMP'S LINK.

### BENCHMARKS

BM #1  
SQUARE CUT TOP OF CURB, AT SOUTH SIDE OF LIGHT POLE NORTH OF GUEST SERVICES OFFICE BUILDING.  
ELEV. = 1404.07 NAVD 88

BM #2  
SQUARE CUT TOP OF CURB, ON WEST RETURN OF SOUTH SIDE OF 3RD ISLAND SOUTH OF COCO DOLCE.  
ELEV. = 1399.25 NAVD 88

### LEGAL DESCRIPTION

LOT 3 & 5, BLOCK 1, BRADLEY FAIR ADD.  
LOT 2, BLOCK 1, BRADLEY FAIR 2ND ADD.

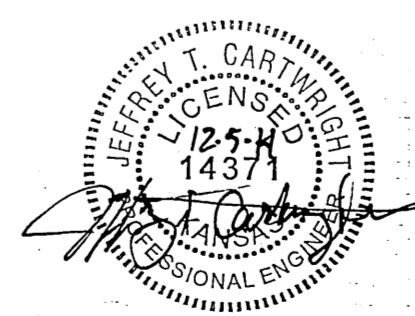
### LEGEND

XXXXX	EXISTING TO BE REMOVED
W	PROPOSED WATER
W	EXISTING WATERLINE
---	EXISTING SANITARY SEWER
---	EXISTING STORMWATER SEWER
UG	EXISTING UNDERGROUND ELECTRICAL
UGT	UNDERGROUND TELEPHONE
G	GAS LINE

**AS BUILTS**

Contractor: Utilities Plus  
05/01/2015

Project Inspector: Tom Jones  
**KEMILLER**  
REGISTERED PROFESSIONAL ENGINEER  
117 E. LINDA, WICHITA, KS 67202 (316)284-0242



APPROVED AS NOTED  
BY CITY ENGINEER OF WICHITA, &  
WICHITA WATER & SEWER DEPARTMENT

San. Swr. Mains (Public Works) *Rebecca Duff* 12/5/14

NOTE TO CONTRACTORS

Public Property:  
Inspection and testing for the sanitary sewer is to be provided by a Licensed Consulting Engineering Firm under contract with the Owner/Developer. Said inspection to be in accordance with the City of Wichita Standard Construction Engineering Practices and certified by a Professional Engineer licensed in the state of Kansas. No work shall be performed in dedicated easements or public rights-of-way by the Contractor without such inspection, nor shall any work be commenced without written authorization by the City Engineer. All construction and materials shall comply with the City of Wichita Specifications and Standards (on file and available in the City Engineer's Office).

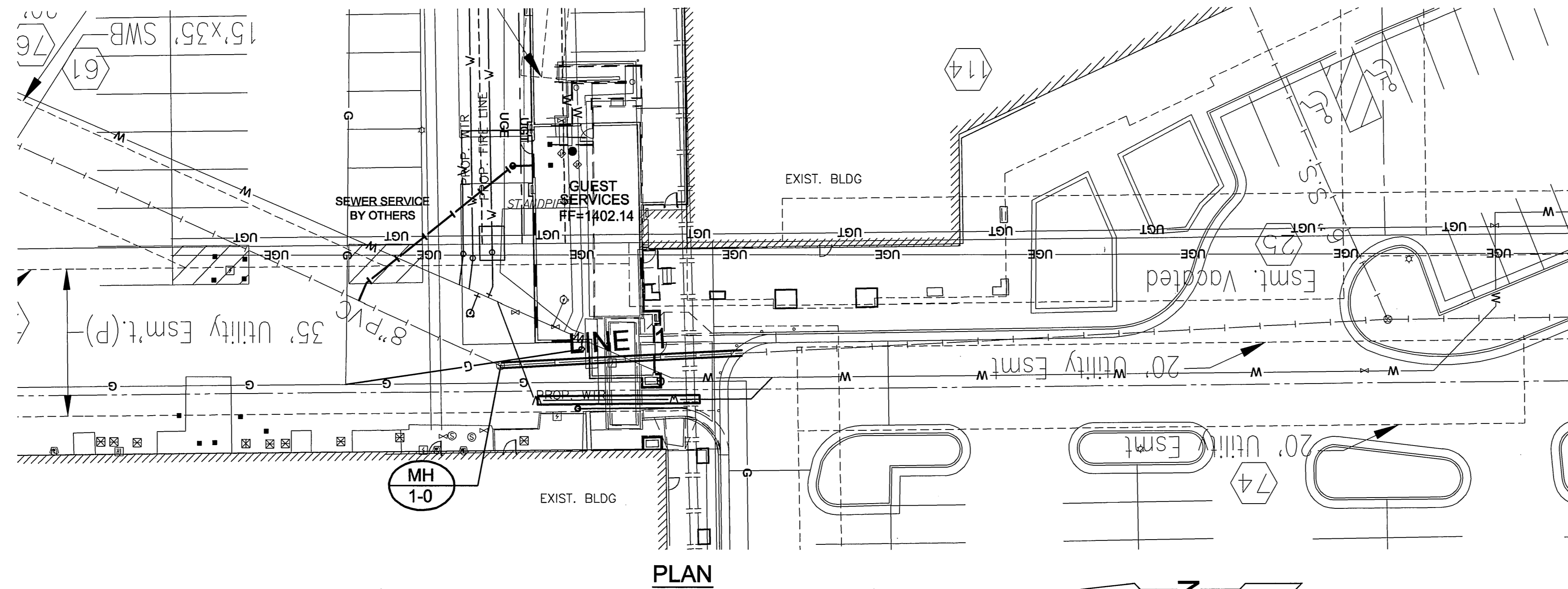


PRIVATE SANITARY SEWER PLANS FOR  
**BRADLEY FAIR GUEST SERVICES**  
NORTH ROCK ROAD, WICHITA, KANSAS

©2014 MKEC Engineering All Rights Reserved  
www.mkec.com  
These drawings and their contents, including, but not limited to, all concepts, designs, & ideas are the exclusive property of MKEC Engineering (MKEC), and may not be used or reproduced in any way without the express consent of MKEC.

SAN TITLE SHEET	
PROJECT NO.	1401010177
DATE	OCT. 2014
SCALE	AS SHOWN
DESIGNED	DRAWN
JTC	LES
CHECKED	JTC
NO.	REVISION
	DATE
SHEET NO.	
01 OF 02	

J:\PROJECTS\2014\1401010177 - LAHAM, BRADLEY FAIR GUEST SERVICES-CIVIL\CAD\ASAN14177\T01.DWG



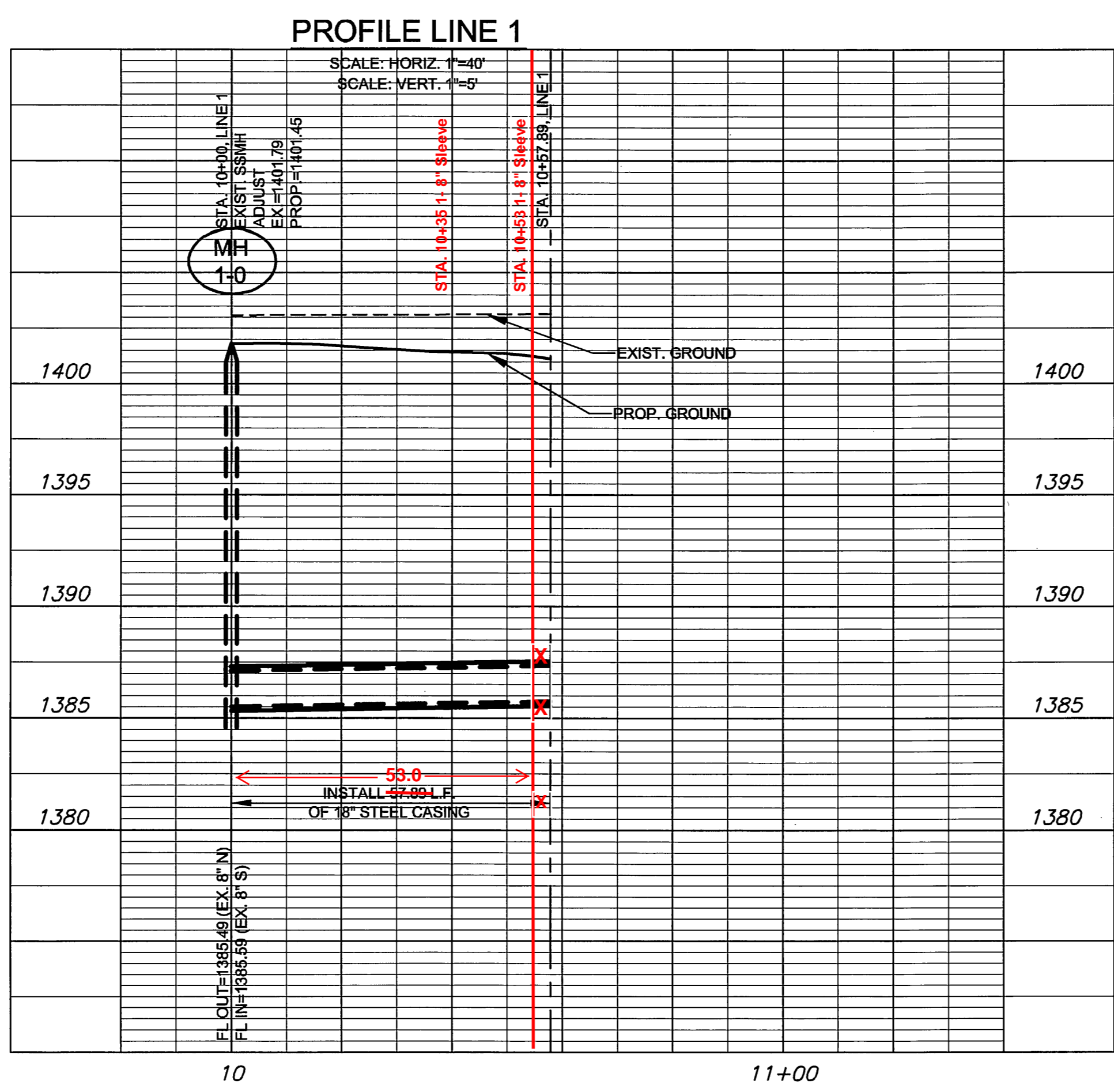
**PLAN**



**LEGEND**

- XXXXX EXISTING TO BE REMOVED
- W PROPOSED WATER
- W EXISTING WATERLINE
- EXISTING SANITARY SEWER
- EXISTING STORMWATER SEWER
- UGE EXISTING UNDERGROUND ELECTRICAL
- UGT UNDERGROUND TELEPHONE
- G GAS LINE

**NOTE:**  
CONTRACTOR TO VERIFY THE DEPTH AND LOCATION OF EXISTING UTILITIES PRIOR TO CONSTRUCTION.



**PROFILE LINE 1**

**AS BUILTS**



**NOTE:** ALL LINES TO BE INSTALLED BY OTHERS ARE SUBJECT TO MABCD REVIEW.

**NOTE:** CONTRACTOR TO VERIFY DEPTH AND LOCATION OF EXISTING UTILITIES PRIOR TO CONSTRUCTION.

PRIVATE SANITARY SEWER PLANS FOR  
**BRADLEY FAIR GUEST SERVICES**  
NORTH ROCK ROAD, WICHITA, KANSAS

©2014 MKEC Engineering All Rights Reserved www.mkec.com  
These drawings and their contents, including, but not limited to, all concepts, designs, & ideas are the exclusive property of MKEC Engineering (MKEC), and may not be used or reproduced in any way without the express consent of MKEC.

**SAN PLAN AND PROFILE**

PROJECT NO.	1401010177	
DATE	OCT. 2014	
SCALE	AS SHOWN	
DESIGNED	DRAWN	CHECKED
JTC	LES	JTC

NO.	REVISION	DATE

J:\PROJECTS\2014\1401010177 - LAMAR BRADLEY FAIR GUEST SERVICES SANITARY PLAN.dwg