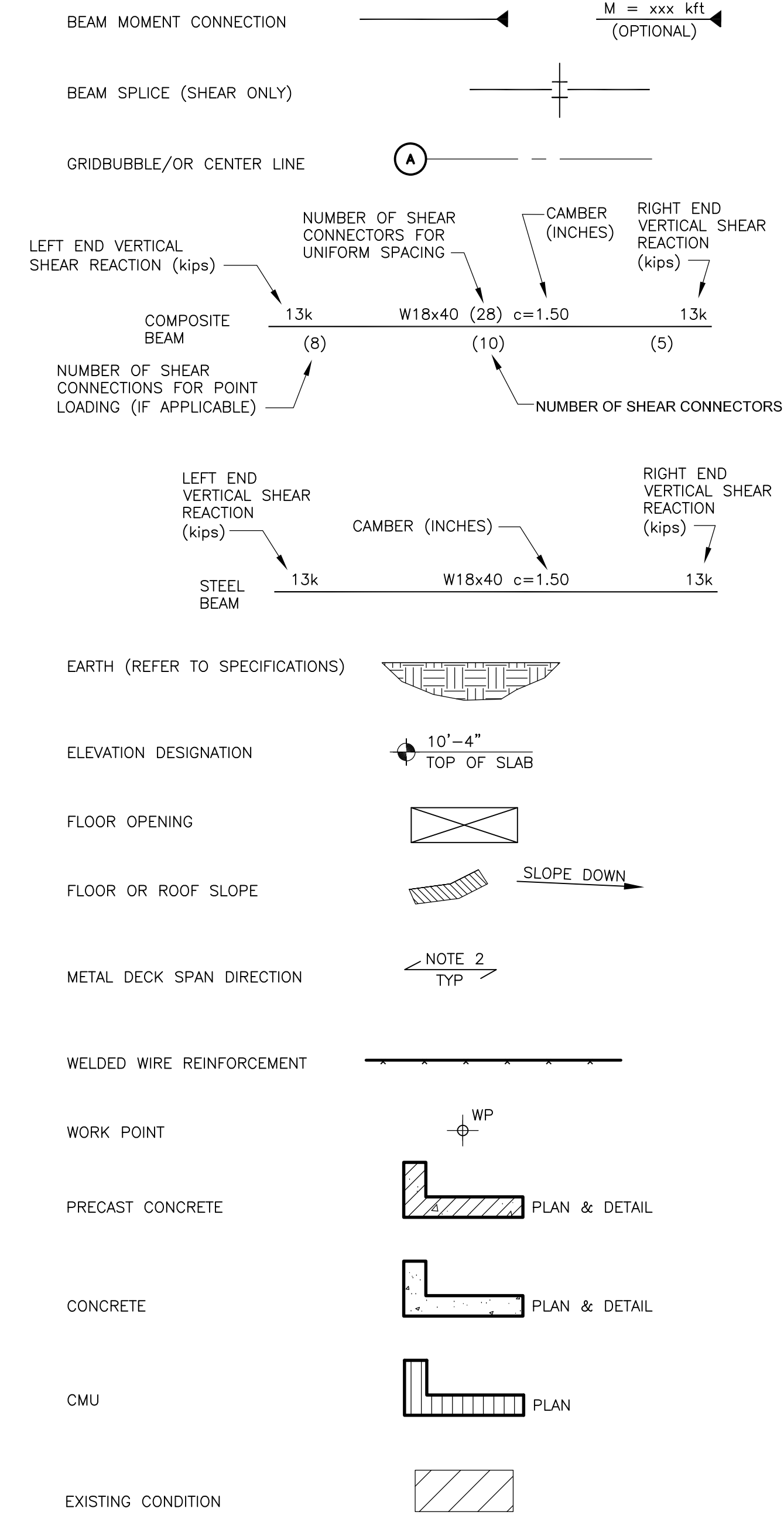


©2014 CDM SMITH ALL RIGHTS RESERVED. REUSE OF DOCUMENTS: THESE DOCUMENTS AND DESIGNS PROVIDED BY PROFESSIONAL SERVICE, INCORPORATED HEREIN, ARE THE PROPERTY OF CDM SMITH AND ARE NOT TO BE USED, IN WHOLE OR PART, FOR ANY OTHER PROJECT WITHOUT THE WRITTEN AUTHORIZATION OF CDM SMITH.

**GENERAL NOTES:**

**A. TYPICAL DETAILS**  
 DETAILS LABELED "TYPICAL DETAILS" ON THE DRAWINGS SHALL APPLY TO ALL SITUATIONS OCCURRING ON THE PROJECT THAT ARE THE SAME OR SIMILAR TO THOSE SPECIFICALLY DETAILED. THE APPLICABILITY OF THE DETAIL TO ITS LOCATION ON THE PLANS CAN BE DETERMINED BY THE TITLE OF THE DETAIL. SUCH DETAILS SHALL APPLY WHETHER OR NOT THEY ARE KEYED IN AT EACH LOCATION. DECISIONS REGARDING APPLICABILITY OF TYPICAL DETAILS SHALL BE DETERMINED BY THE ENGINEER.

**B. SYMBOLS AND NOTATIONS**



**NOTE:**  
 ITEMS SHOWN ON THIS SYMBOLS AND NOTATIONS LIST MAY OR MAY NOT APPLY TO THIS PROJECT.  
 ITEMS SHOWN ARE FOR REFERENCE ONLY.

**SECTION CALLOUT**

DETAIL/SECTION/DIAGRAM TAG CALLOUTS

DRAWING TITLE FOR PLAN/ELEVATION

BLOW-UP CALLOUT

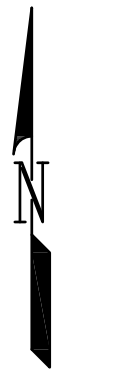
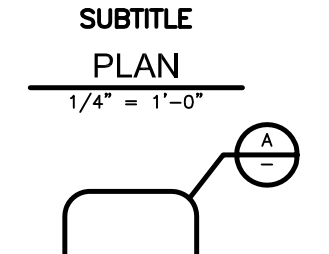
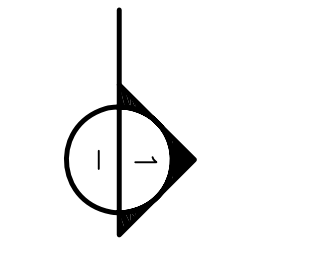
NORTH ARROW

INFORMATION BLOCK OR NOTATIONS

**PRELIMINARY - NOT FOR CONSTRUCTION** HOLD

**LINE LEGEND**

|                   |       |
|-------------------|-------|
| FOOTING           | ----- |
| JOIST             | ----- |
| CONTROL JOINT     | ----- |
| MATCH LINE        | ----- |
| BEAM              | ----- |
| PRE-CAST CONCRETE | ----- |
| WELDED WIRE MESH  | ----- |
| GRID LINE         | ----- |
| EXISTING BEYOND   | ----- |



**DRAWING INTERPRETATION STRUCTURAL ABBREVIATIONS**

|         |                             |           |                               |
|---------|-----------------------------|-----------|-------------------------------|
| ADD     | -ADDITIONAL                 | NIC       | -NOT IN CONTRACT              |
| AHU     | -AIR HANDLING UNIT          | NO. #     | -NUMBER                       |
| ALT     | -ALTERNATE                  | NS        | -NEAR SIDE                    |
| ANCH    | -ANCHOR                     | NTS       | -NOT TO SCALE                 |
| ANG     | -AND                        | NWC       | -NORMAL WEIGHT CONCRETE       |
| AR      | -ANGLE                      | OC        | -ON CENTER                    |
| @       | -ANGLE ROD                  | OPNG(S)   | -OPENING(S)                   |
| BLDG    | -AT                         | OPP       | -OPPOSITE                     |
| BM(S)   | -BUILDING                   | OPP HD    | -OPPOSITE HAND                |
| BO      | -BEAMS                      | PC        | -PRECAST CONCRETE             |
| BOT     | -BOTTOM OF                  | PCF       | -POUNDS PER CUBIC FOOT        |
| BRDG    | -BOTTOM                     | PL        | -PLATE                        |
| BRG     | -BRIDGING                   | PLCS      | -PLACES                       |
| BTWN    | -BEARING                    | PROP LN   | -PROPERTY LINE                |
| C       | -BETWEEN                    | PLF       | -POUNDS PER LINEAR FOOT       |
| CANT    | -CHANNEL                    | PRELIM    | -PRELIMINARY                  |
| CIP     | -CANTILEVER                 | PSF       | -POUNDS PER SQUARE FOOT       |
| CJ      | -CAST IN PLACE CONCRETE     | PSI       | -POUNDS PER SQUARE INCH       |
| CJ      | -CONSTRUCTION JOINT         | PT        | -POST TENSION(ED) (ING)       |
| CJP     | -COMPLETE JOINT PENETRATION | QTY       | -QUANTITY                     |
| CL      | -CENTER LINE                | R         | -REACTION                     |
| CLR     | -CLEAR                      | RAD       | -RADIUS                       |
| CMU     | -CONCRETE MASONRY UNIT      | RE        | -REFERENCE                    |
| COL     | -COLUMN                     | REF       | -REFERENCE                    |
| COMPR   | -COMPRESSIBLE               | REINF     | -REINFORCEMENT OR REINFORCING |
| CO      | -COMPANY                    | REM       | -REMINDER                     |
| CONC    | -CONCRETE                   | REQD      | -REQUIRED                     |
| CONN(S) | -CONNECTION(S)              | RET WALL  | -RETAINING WALL               |
| CONST   | -CONSTRUCTION               | REV       | -REVISION                     |
| CONT    | -CONTINUED                  | RIS       | -RISER (STAIR)                |
| CORR    | -CORRUGATED                 | RTU       | -ROOF TOP UNIT                |
| CTRS    | -CENTERS                    | SC        | -SLIP CRITICAL                |
| dB      | -BAR DIAMETER               | SCH       | -SCHEDULE(D)                  |
| DBA     | -DEFORMED BAR ANCHOR        | SECT      | -SECTION                      |
| DET     | -DETAIL                     | SHR CONN  | -SHEAR CONNECTION(S)          |
| DIA     | -DIAMETER                   | SHT       | -SHEET                        |
| DIM     | -DIMENSION                  | SIM       | -SIMILAR                      |
| DWA     | -DIAMETER (DEGREE)          | SJ        | -SAWED JOINT                  |
| DWL(S)  | -DEFORMED WIRE ANCHOR       | SLBB      | -SHORT LEG BACK TO BACK       |
| DWG(S)  | -DRAWING(S)                 | SP OR SPA | -SPACE, SPACING               |
| EA      | -EACH                       | SPEC(S)   | -SPECIFICATION(S)             |
| EF      | -EACH FACE                  | SQ        | -SQUARE                       |
| EJ      | -EXPANSION JOINT            | SS        | -STAINLESS STEEL              |
| EL      | -ELEVATION                  | STD       | -STANDARD                     |
| ELEV    | -ELEVATOR                   | STL       | -STEEL                        |
| EMBED   | -EMBEDMENT                  | STIR      | -STIRRUP                      |
| ENGR    | -ENGINEER                   | STRUCT    | -STRUCTURE                    |
| EQ      | -EQUAL                      | SYM       | -SYMMETRICAL                  |
| EQUIP   | -EQUIPMENT                  | T         | -PLATE THICKNESS              |
| EQUIV   | -EQUIVALENT                 | T&B       | -TOP AND BOTTOM               |
| EW      | -EACH WAY                   | THRD      | -THREADED                     |
| EW&B    | -EACH WAY TOP & BOT         | THRU      | -THROUGH                      |
| EXIST   | -EXISTING                   | TO        | -TOP OF                       |
| EXP     | -EXPANSION                  | TOC       | -TOP OF CONCRETE              |
| EXT     | -EXTERIOR                   | TOF       | -TOP OF FOUNDATION            |
| FA      | -FACE                       | TOS       | -TOP OF STEEL                 |
| FAB     | -FABRICATE                  | TOW       | -TOP OF WALL                  |
| Fc=     | -28 DAY CONCRETE STRENGTH=  | TR        | -TREAD (STAIR)                |
| FD      | -FLOOR DRAIN                | TYP       | -TYPICAL                      |
| FDN     | -FOUNDATION                 | UNO       | -UNLESS NOTED OTHERWISE       |
| FIN     | -FINISHED                   | VERT      | -VERTICAL                     |
| FL      | -FLOOR                      | W/        | -WITH                         |
| FRMG    | -FRAMING                    | WD        | -WOOD                         |
| FS      | -FAR SIDE                   | WF        | -WIDE FLANGE                  |
| FTG     | -FOOTING                    | WGT       | -WEIGHT                       |
| FUT     | -FUTURE                     | WP        | -WORKING POINT                |
| GALV    | -GALVANIZED                 | WS        | -WATER STOP                   |
| GEN     | -GENERAL                    | WT        | -STEEL TEE SECTION            |
| HGR     | -HANGER                     | WWF       | -WELDED WIRE FABRIC           |
| HORIZ   | -HORIZONTAL                 | WWR       | -WELDED WIRE REINFORCING      |
| HSA     | -HEAD STUD ANCHOR           | X-STR     | -EXTRA STRONG                 |
| HSS     | -HOLLOW STRUCTURAL SHAPE    | XX-STR    | -DOUBLE EXTRA STRONG          |
| INT     | -INTERIOR                   |           |                               |
| JT      | -JOINT                      |           |                               |
| K       | -KIPS (1000 LBS)            |           |                               |
| KSF     | -KIPS PER SQUARE FOOT       |           |                               |
| KSI     | -KIPS PER SQUARE INCH       |           |                               |
| 2L      | -DOUBLE ANGLE               |           |                               |
| LLBB    | -LONG LEG BACK TO BACK      |           |                               |
| LB      | -POUND(S)                   |           |                               |
| Ld      | -DEVELOPMENT LENGTH         |           |                               |
| LLH     | -LONG LEG HORIZONTAL        |           |                               |
| LLV     | -LONG LEG VERTICAL          |           |                               |
| LSH     | -LONG SIDE HORIZONTAL       |           |                               |
| LSV     | -LONG SIDE VERTICAL         |           |                               |
| LWC     | -LIGHTWEIGHT CONCRETE       |           |                               |
| MAS     | -MASONRY                    |           |                               |
| MAX     | -MAXIMUM                    |           |                               |
| MEZZ    | -MEZZANINE                  |           |                               |
| MFR     | -MANUFACTURE(R)             |           |                               |
| MIN     | -MINIMUM                    |           |                               |
| MISC    | -MISCELLANEOUS              |           |                               |

| REV. NO. | DATE | DRWN | CHKD | REMARKS |
|----------|------|------|------|---------|
|          |      |      |      |         |
|          |      |      |      |         |
|          |      |      |      |         |

DESIGNED BY: \_\_\_\_\_  
 DRAWN BY: \_\_\_\_\_  
 SHEET CHK'D BY: \_\_\_\_\_  
 CROSS CHK'D BY: \_\_\_\_\_  
 APPROVED BY: \_\_\_\_\_  
 DATE: APRIL 2015

**CDM Smith**  
 9200 Ward Parkway, Suite 500  
 Kansas City, MO 64114  
 Tel: (816) 444-9270  
 MO COA No. 001431

**DUBOIS CONSULTANTS**  
 CIVIL & STRUCTURAL ENGINEERING  
 5737 SWOPE PARKWAY  
 KANSAS CITY, MO. 64130  
 (816)333-7700 FAX (816)333-7722  
 www.dubois.com  
 MO COA No. 001483

CITY OF WICHITA, KANSAS  
 WATER AND SEWER DEPARTMENT  
**SEWAGE TREATMENT PLANT NO.2  
 IMPROVMENTS UV DISINFECTION**

**EFFLUENT UV DISINFECTION FACILITY  
 LEGEND AND ABBREVIATIONS**

PROJECT NO. 2395-104609  
 FILE NAME:  
 SHEET NO.  
**S-2**

