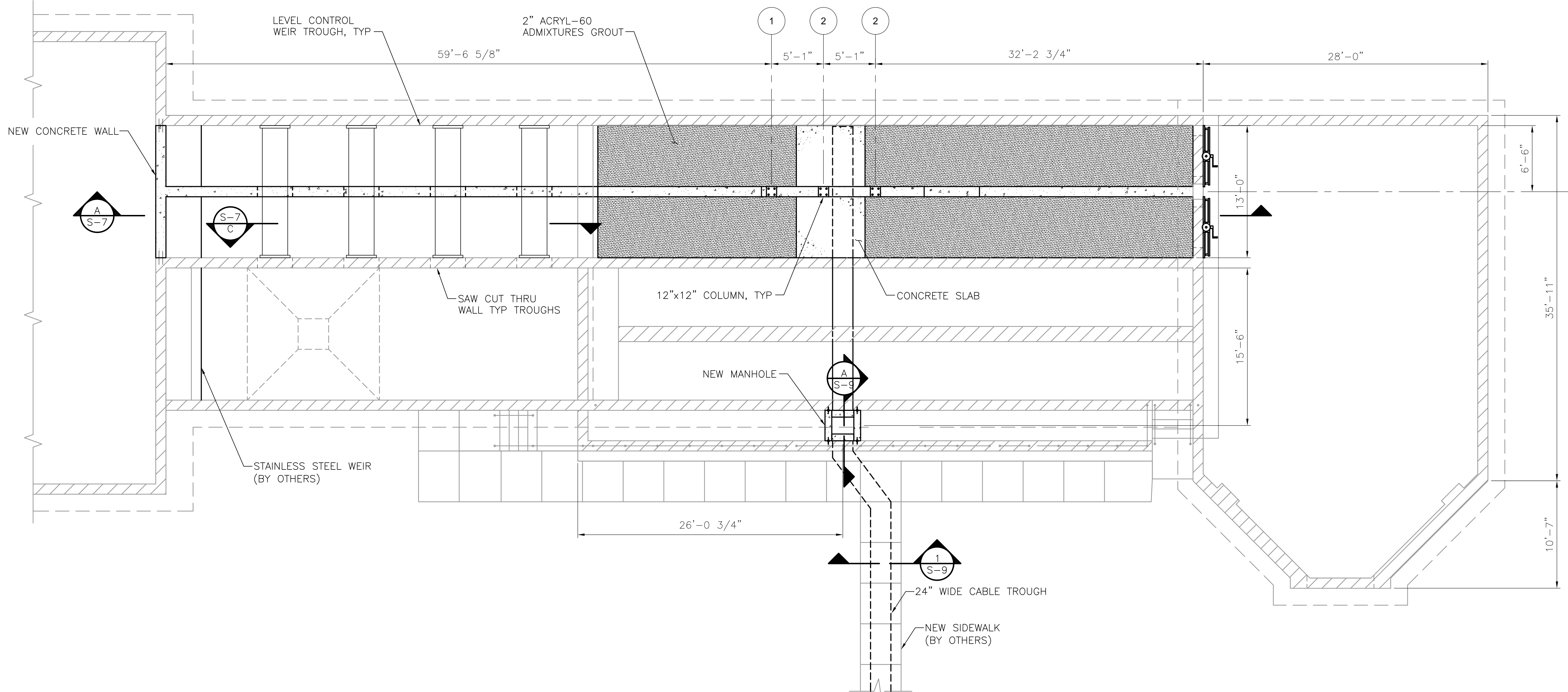
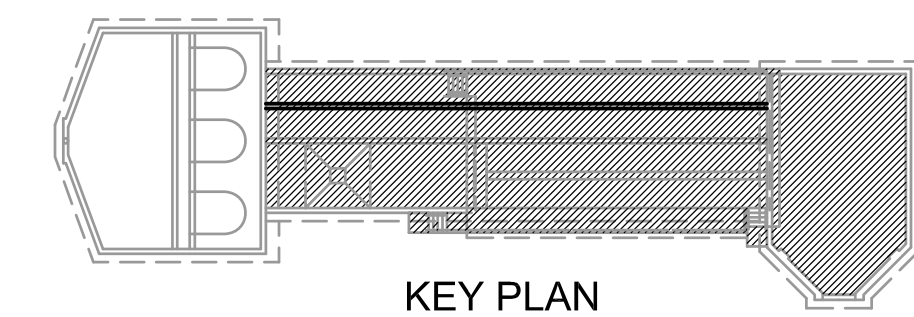


© 2014 CDM SMITH ALL RIGHTS RESERVED. REUSE OF DOCUMENTS: THESE DOCUMENTS AND DESIGNS PROVIDED BY PROFESSIONAL SERVICE, INCORPORATED HEREIN, ARE THE PROPERTY OF CDM SMITH AND ARE NOT TO BE USED, IN WHOLE OR PART, FOR ANY OTHER PROJECT WITHOUT THE WRITTEN AUTHORIZATION OF CDM SMITH.



LOWER - EL 1262.00
PLAN
 3/16" = 1'-0"



REV. NO.	DATE	DRWN	CHKD	REMARKS

DESIGNED BY: _____
 DRAWN BY: _____
 SHEET CHK'D BY: _____
 CROSS CHK'D BY: _____
 APPROVED BY: _____
 DATE: APRIL 2015

CDM Smith
 CIVIL & STRUCTURAL ENGINEERING
 9200 Ward Parkway, Suite 500
 Kansas City, MO 64114
 Tel: (816) 444-9270
 MO COA No. 001431

DUBOIS CONSULTANTS
 CIVIL & STRUCTURAL ENGINEERING
 5737 SWOPE PARKWAY
 KANSAS CITY, MO. 64130
 (816) 333-7700 FAX (816) 333-7722
 www.dubois.com
 MO COA No. 001483

CITY OF WICHITA, KANSAS
 WATER AND SEWER DEPARTMENT
**SEWAGE TREATMENT PLANT NO.2
 IMPROVEMENTS UV DISINFECTION**

**EFFLUENT UV DISINFECTION FACILITY
 PLANS AND ELEVATIONS**

PROJECT NO. 2395-104609
 FILE NAME:
 SHEET NO. **S-5**