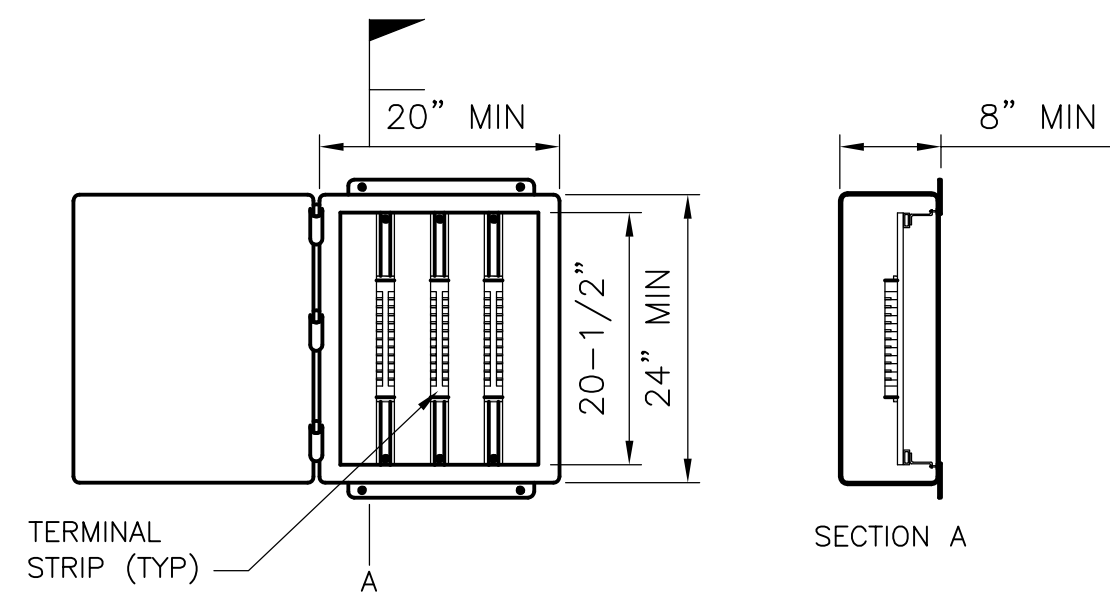


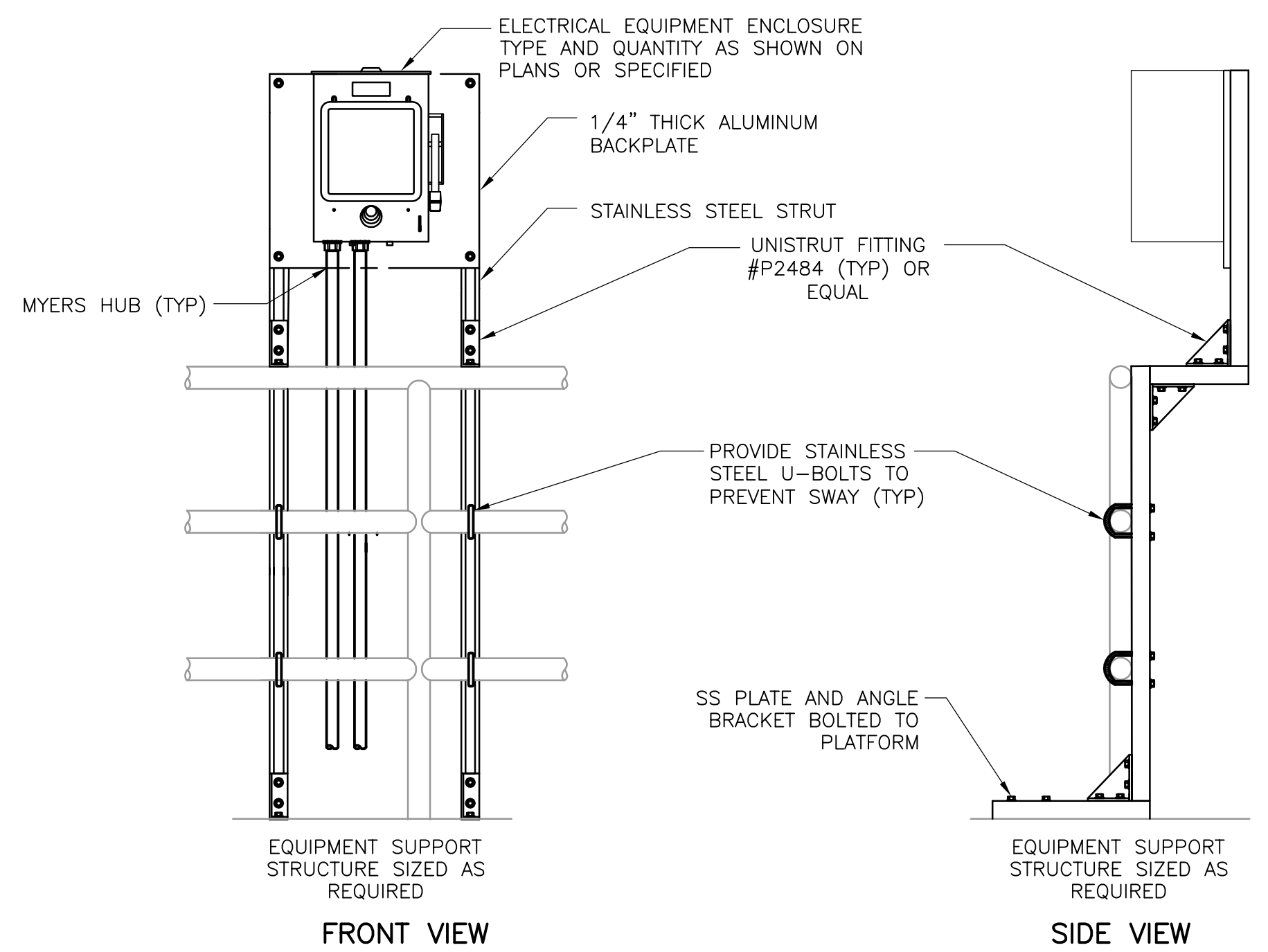
XREF: [CDMS_2234] Images: []
 Last saved by: DINESHK Time: 4/16/2015 12:52:14 PM
 pw:\dcpwpp1\FW_XM12395\104609\04 Design Services NM_5% 09 Electrical\10 CAD\10 EZ-1.dwg
 © 2015 CDM SMITH ALL RIGHTS RESERVED.
 REUSE OF DOCUMENTS: THESE DOCUMENTS AND DESIGNS PROVIDED BY PROFESSIONAL SERVICE, INCORPORATED HEREIN, ARE THE PROPERTY OF CDM SMITH AND ARE NOT TO BE USED, IN WHOLE OR PART, FOR ANY OTHER PROJECT WITHOUT THE WRITTEN AUTHORIZATION OF CDM SMITH.



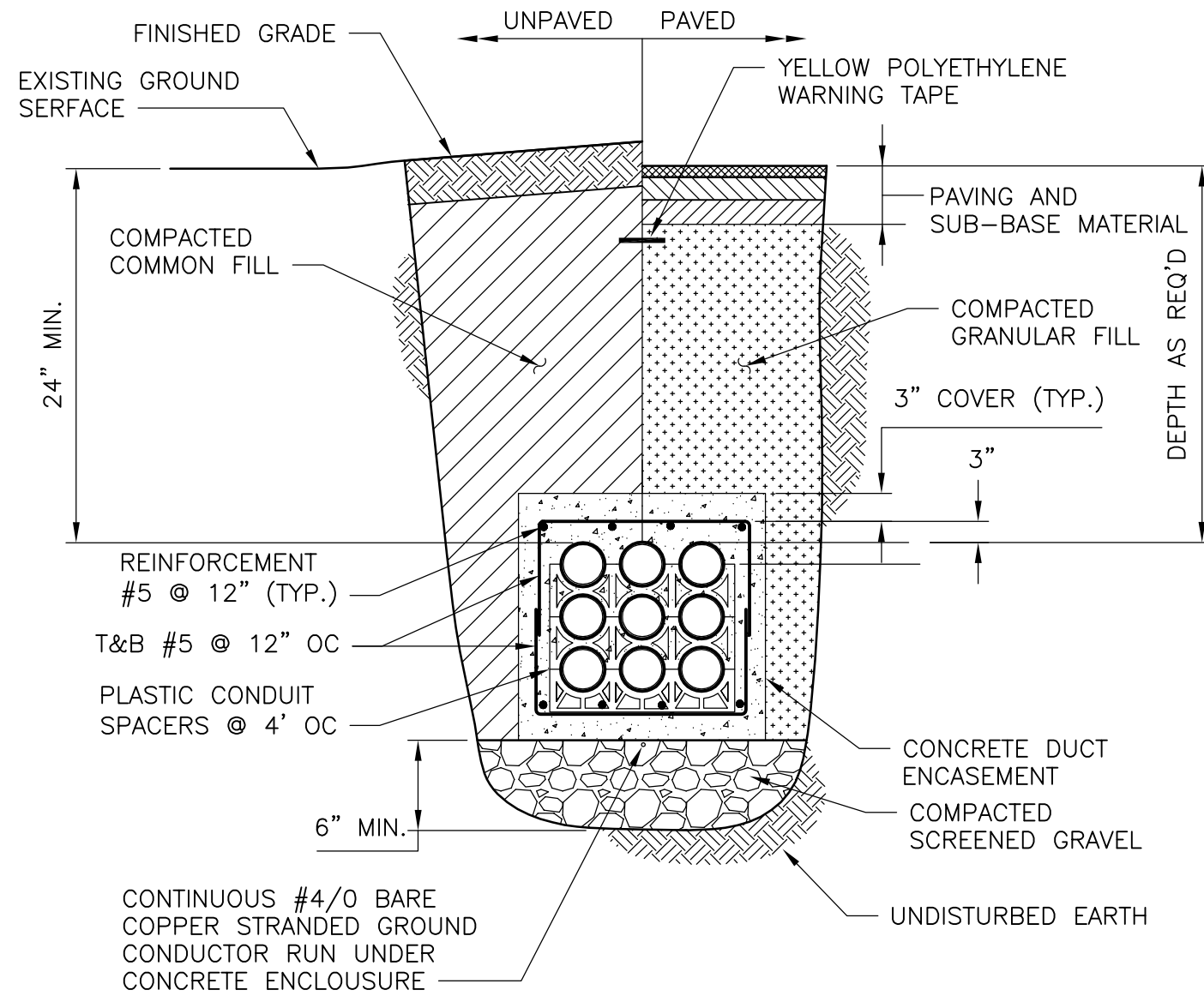
NOTES:

1. PROVIDE AND INSTALL NEMA 4X 316SS STAINLESS STEEL ENCLOSURE.
2. PROVIDE AND INSTALL ENOUGH TERMINALS TO SUPPORT DEVICES SHOWN ON CORRESPONDING SHEETS. PROVIDE SPARE TERMINALS PER DIV 16 SPECIFICATIONS.
3. UNIQUELY LABEL AND TERMINATE ALL CONDUCTORS.
4. DIMENSIONS GIVEN ARE MINIMUM. SIZE ENCLOSURE PER NEC WHERE APPLICABLE.

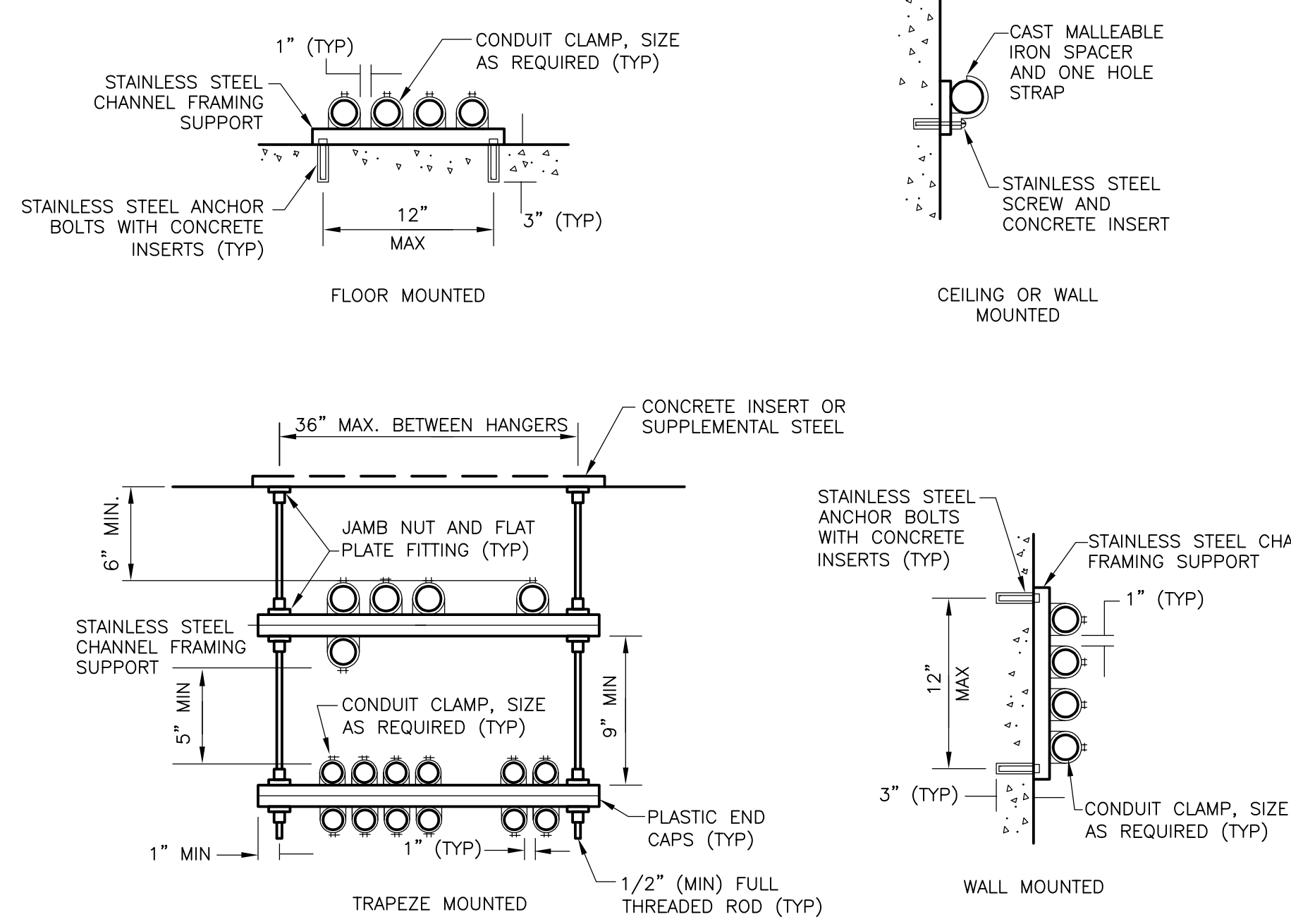
**TERMINAL CABINET
DETAIL A**
NTS



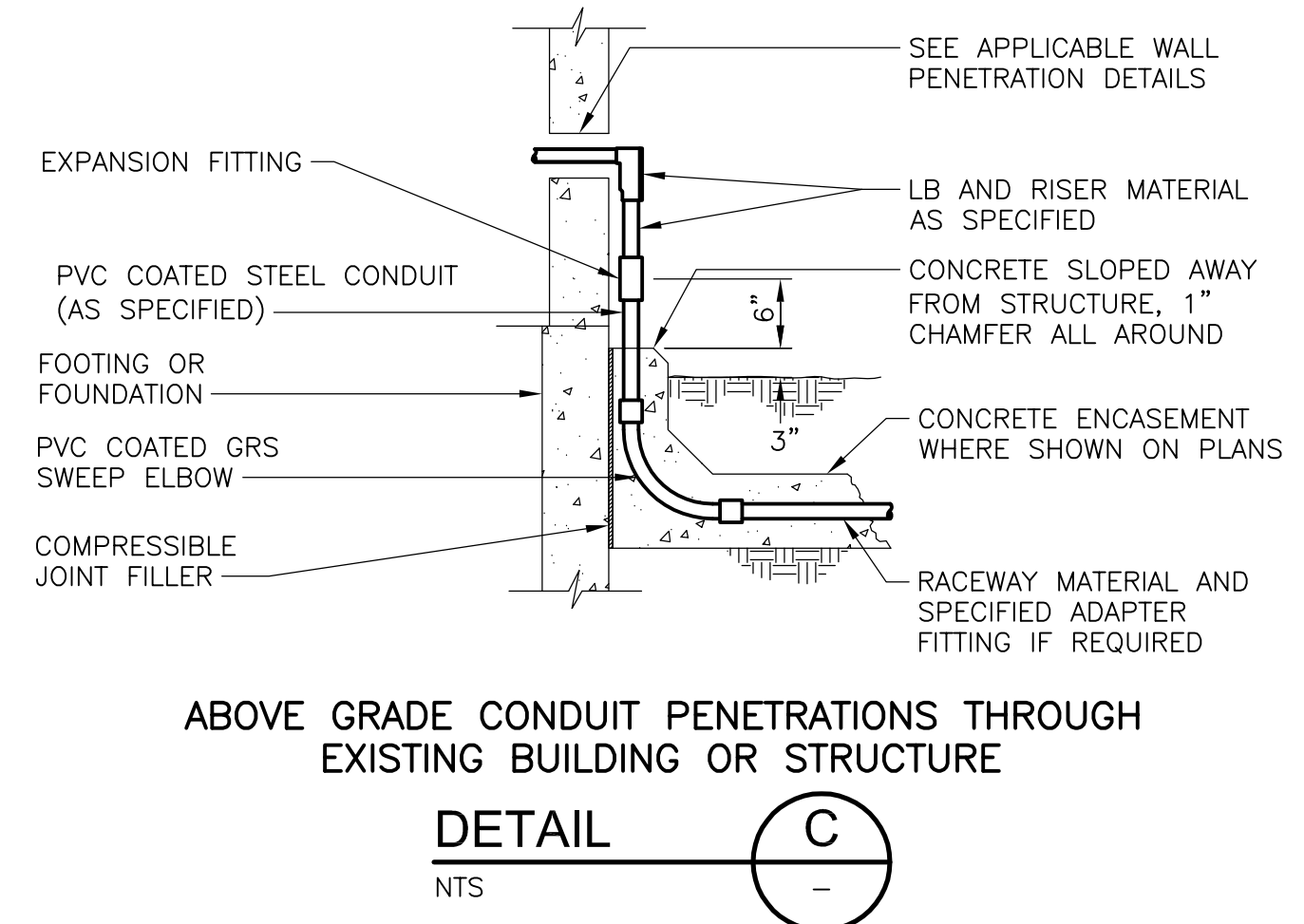
**HANDRAIL MOUNTED DEVICE INSTALLATION
DETAIL B**
NTS



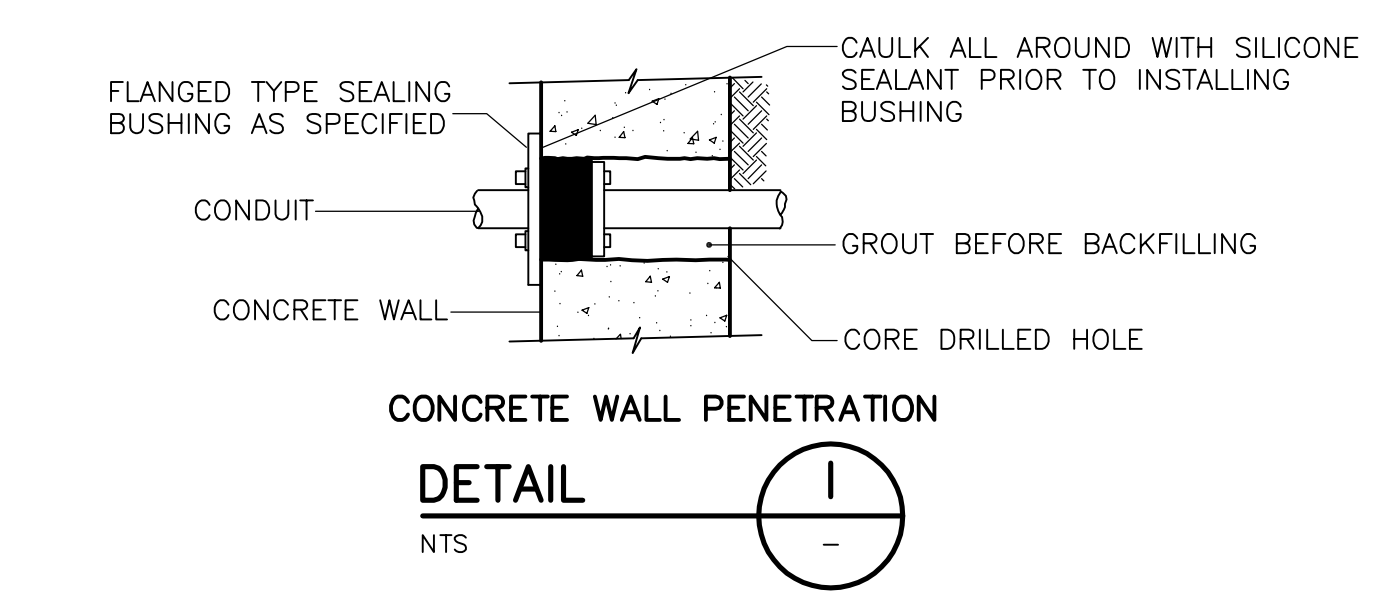
**UNDERGROUND POWER DUCT BANK
DETAIL D**
NTS



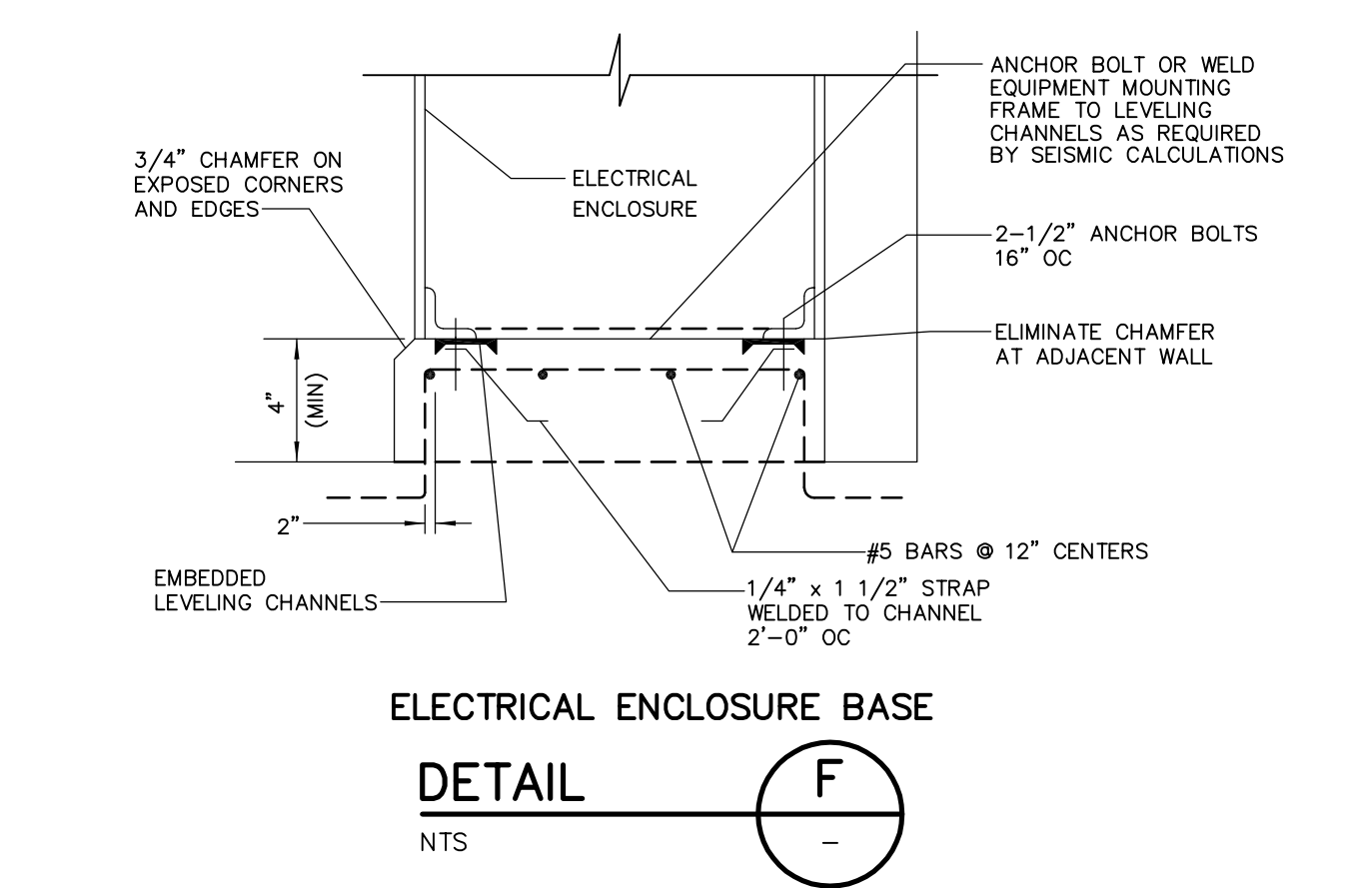
**CONDUIT MOUNTING
DETAIL E**
NTS



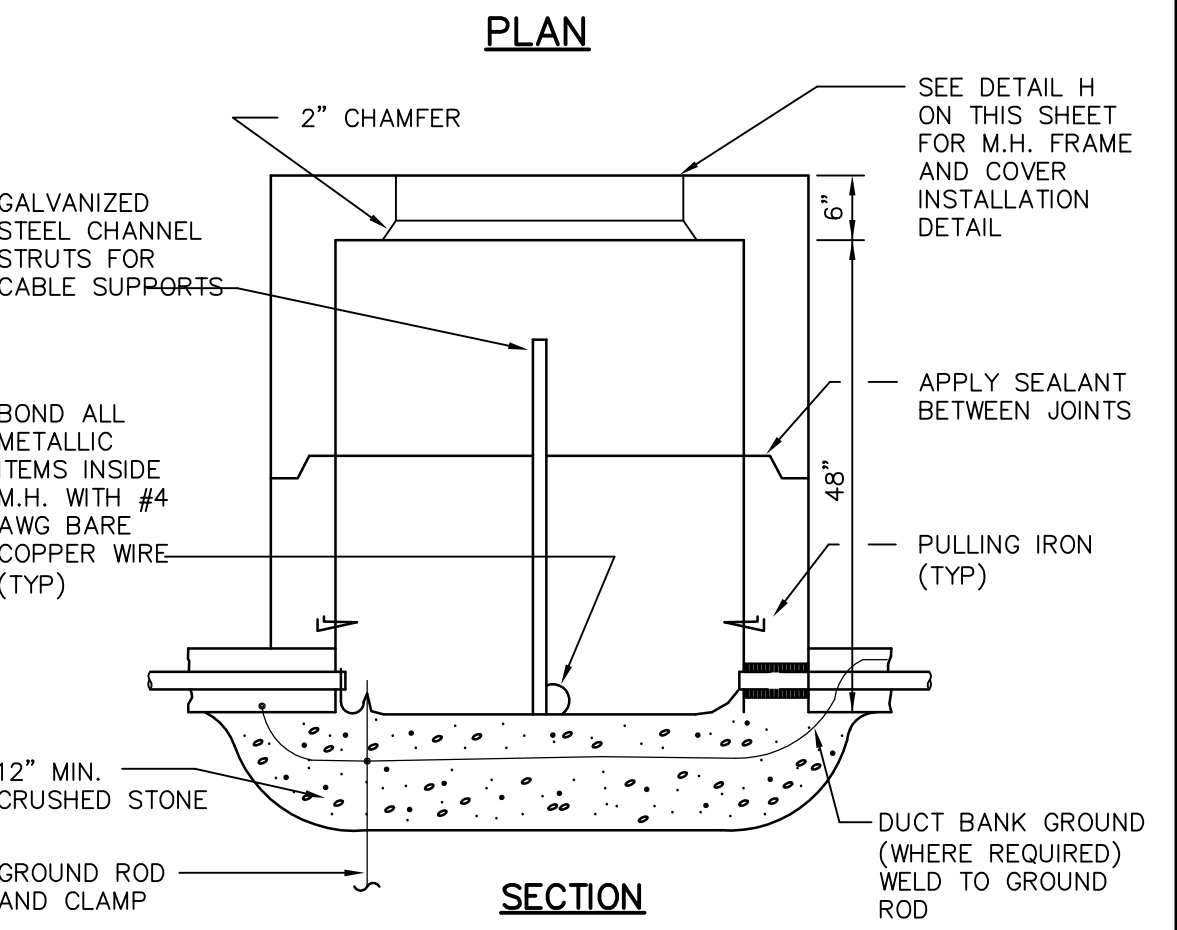
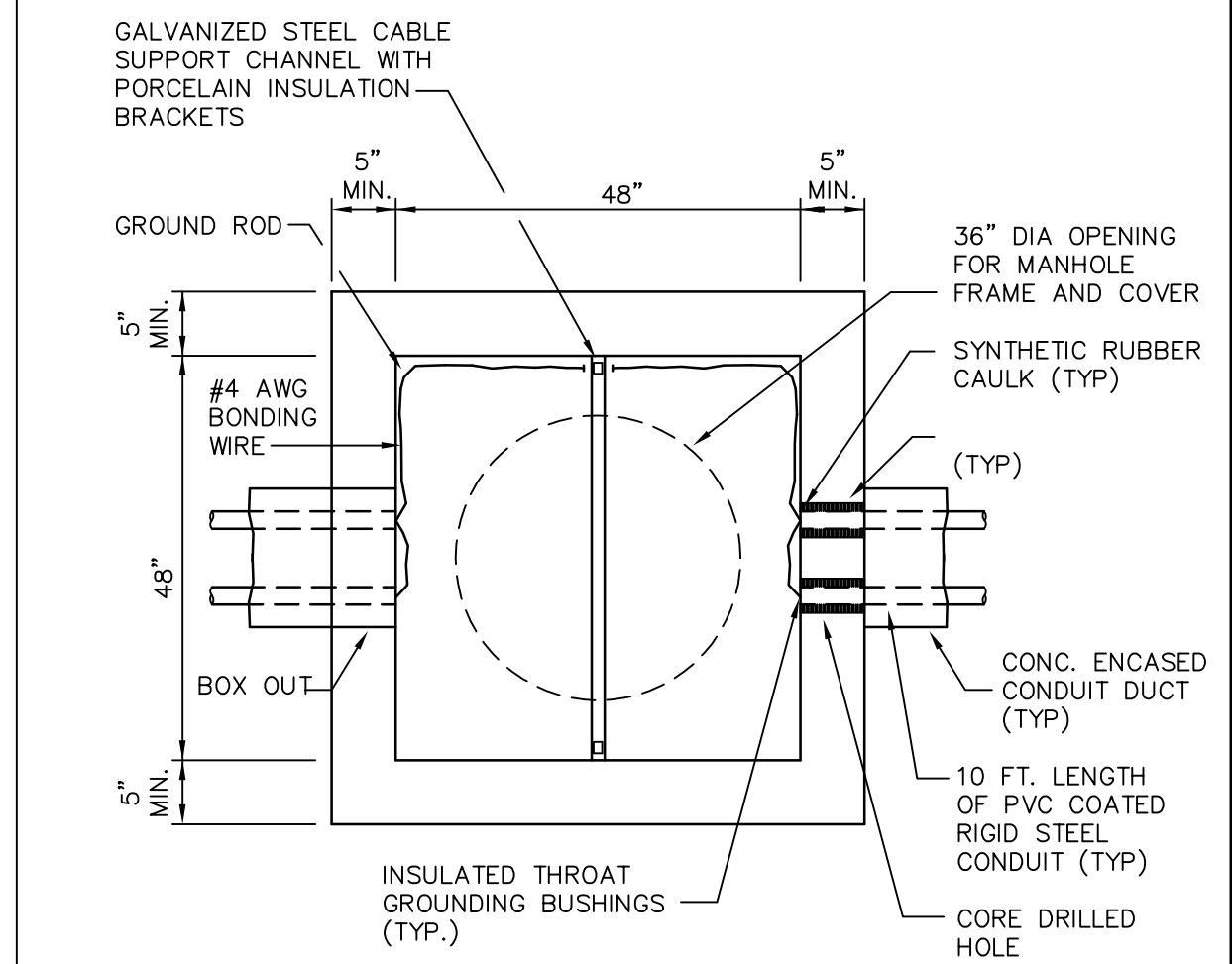
**ABOVE GRADE CONDUIT PENETRATIONS THROUGH EXISTING BUILDING OR STRUCTURE
DETAIL C**
NTS



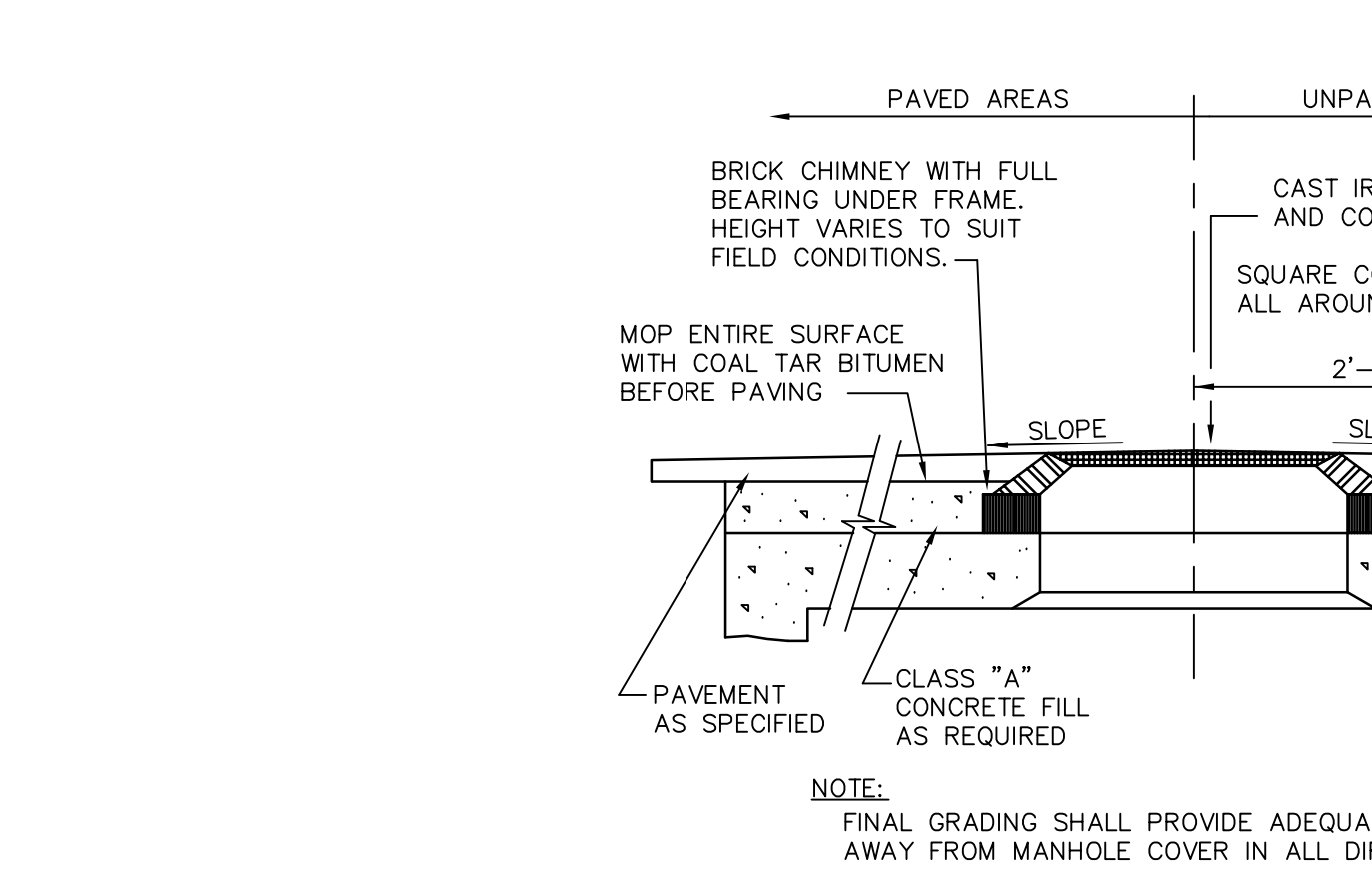
**CONCRETE WALL PENETRATION
DETAIL I**
NTS



**ELECTRICAL ENCLOSURE BASE
DETAIL F**
NTS



**ELECTRICAL HANDHOLE (EHH)
DETAIL G**
NTS



**MANHOLE OR HANDHOLE FRAME AND COVER
DETAIL H**
NTS

REV. NO.	DATE	DRWN	CHKD	REMARKS

DESIGNED BY: J. VARGHESE	<p>9200 Ward Parkway, Suite 500 Kansas City, MO 64114 Tel: (816) 444-9270 MO COA No. 001431</p>
DRAWN BY: J. VARGHESE	
SHEET CHK'D BY: M. HANDLEY	
CROSS CHK'D BY: M. HANDLEY	
APPROVED BY: I. PJETROVIC	
DATE: APRIL 2015	

CITY OF WICHITA, KANSAS
 WATER AND SEWER DEPARTMENT
**SEWAGE TREATMENT PLANT NO.2 IMPROVMENTS
 UV DISINFECTION**

ELECTRICAL STANDARD DETAIL
 PROJECT NO. 2395-104609
 FILE NAME: EZ-1.DWG
 SHEET NO. **EZ-1**

