

SANITARY SEWER

TO SERVE

17TH STREET SANITARY SEWER

THE CITY OF WICHITA, KANSAS
GARY JANZEN, P.E. - CITY ENGINEER

PROJECT NO. 468-85021

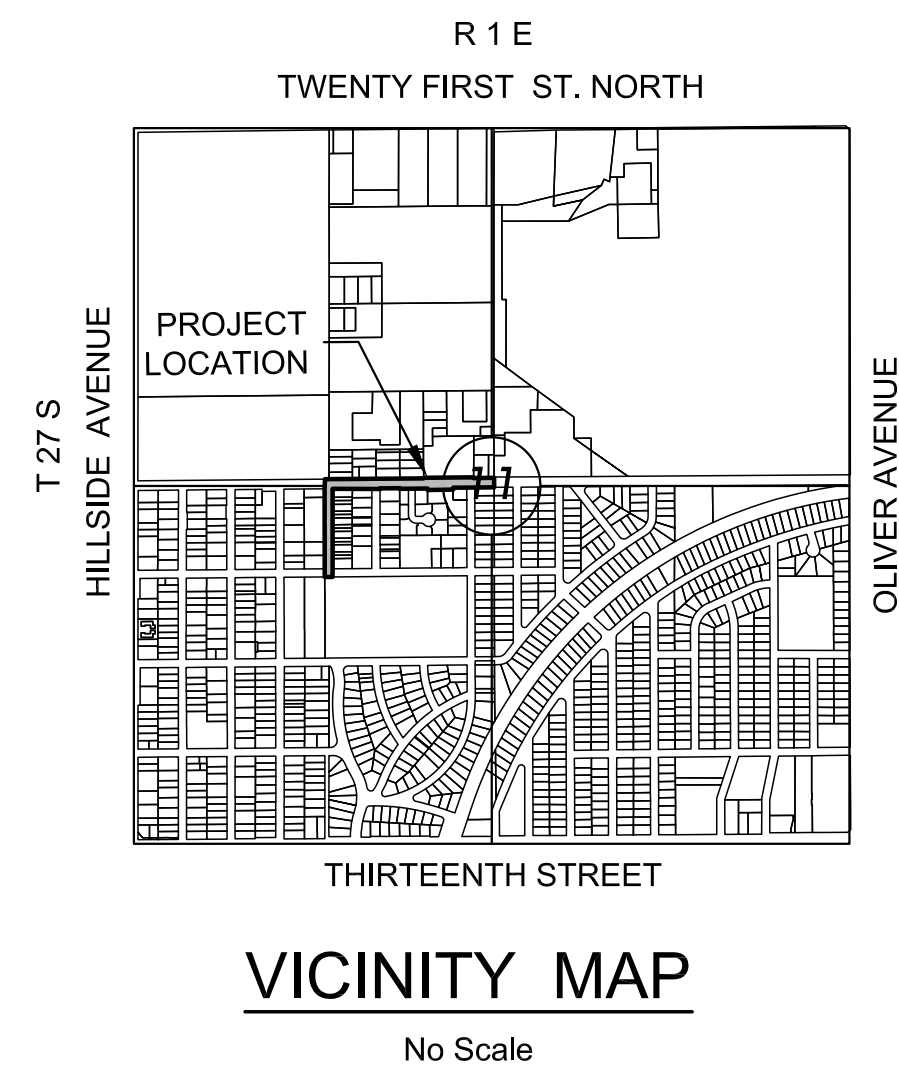
OCA NO. 620740

PROJECT NO. 448-90674

OCA NO. _____

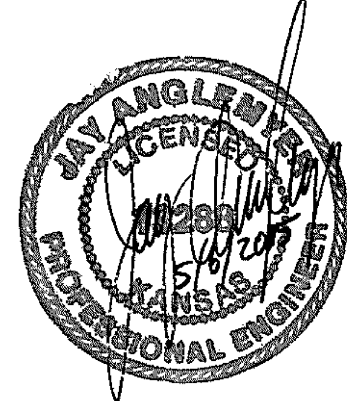
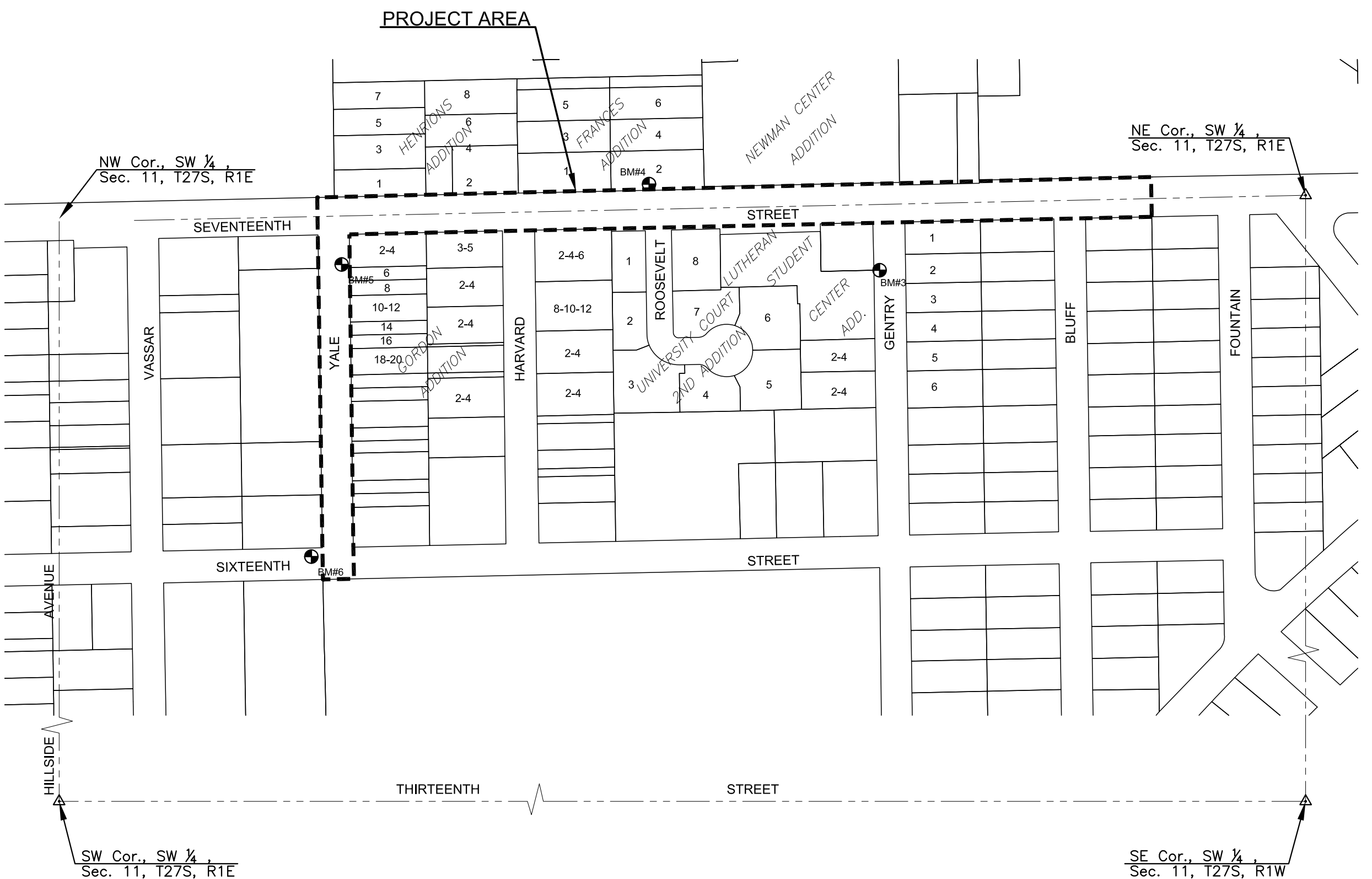
GENERAL NOTES

- THE CONTRACTOR SHALL COMPLY WITH ALL APPLICABLE SAFETY REGULATIONS. ALL CONSTRUCTION SHALL BE COMPLETED FOLLOWING CURRENT CITY STANDARD SPECIFICATIONS AND SPECIAL PROVISIONS.
- THE CONTRACTOR WILL BE REQUIRED TO PROVIDE NOTICE TO UTILITY COMPANIES A MINIMUM OF SEVENTY-TWO (72) HOURS PRIOR TO ANY EXCAVATION, AS FOLLOWS:
KANSAS ONE-CALL 687-2470
THE CONTRACTOR MUST NOTIFY THE FOLLOWING IN CASE OF AN EMERGENCY:
AT&T 1-316-246-8464
BLACK HILLS ENERGY (GAS) 1-800-694-8989
CITY OF WICHITA WATER 1-316-268-4555
CITY OF WICHITA SEWER 1-316-268-4073
CITY OF WICHITA STORMWATER 1-316-268-4090
CITY OF WICHITA TRAFFIC 1-316-268-4034
COX COMMUNICATIONS 1-888-249-3530
KANSAS GAS SERVICE 1-888-482-4950
WESTAR ENERGY 1-800-544-4857
- UTILITY SERVICE LINES, POLES, ETC. ARE TO BE ADJUSTED AS NECESSARY BY OTHERS PRIOR TO CONSTRUCTION UNLESS THE PLANS SPECIFICALLY CALL FOR THEIR ADJUSTMENT BY ITS OWNER DURING CONSTRUCTION. EXISTING UTILITIES AND THEIR LOCATION, AS SHOWN ON THE PLAN, REPRESENT THE BEST INFORMATION OBTAINABLE FOR DESIGN. THE CONTRACTOR WILL BE REQUIRED TO WORK AROUND EXISTING UTILITIES WITHIN THE RIGHT-OF-WAY AND EASEMENTS WHICH DO NOT CONFLICT WITH PROPOSED CONSTRUCTION.
- RUBBLE FROM THE REMOVAL OF MISCELLANEOUS STRUCTURES AND EXCESS EXCAVATION WHICH IS TO BE WASTED SHALL BE DISPOSED OF ON SITES TO BE PROVIDED BY THE CONTRACTOR. THESE SITES SHALL BE APPROVED BY THE ENGINEER AS TO SUITABILITY, APPEARANCE AND SITE LOCATION LOCATIONS. IN THE OPINION OF THE ENGINEER, THAT WILL LEAVE AN UNSIGHTLY APPEARANCE WILL NOT BE APPROVED. ALL DISPOSAL SITES MUST BE APPROVED BY THE KANSAS DEPARTMENT OF HEALTH AND ENVIRONMENT. MATERIAL EITHER STOCKPILED OR DISPOSED OF IN A FLOOD PLAIN WOULD REQUIRE A KANSAS STATE BOARD OF AGRICULTURE PERMIT. ANY MATERIAL DUMPED IN WATERS OF THE UNITED STATES OR WETLANDS IS SUBJECT TO U.S. CORPS OF ENGINEERS PERMITTING REGULATIONS. ANY MATERIAL BURIED OR STOCKPILED BEYOND APPROVED CONSTRUCTION LIMITS WOULD REQUIRE ADDITIONAL ARCHAEOLOGICAL INVESTIGATIONS UNLESS BURIED IN A PREVIOUSLY APPROVED BORROW LOCATION.
- TREES AND SHRUBS IN PUBLIC RIGHT-OF-WAY WHICH ARE IN DIRECT CONFLICT WITH PROPOSED NEW CONSTRUCTION SHALL BE REMOVED BY THE CONTRACTOR WITH THE ENGINEER'S APPROVAL. TREES AND SHRUBS WHICH ARE NOT IN DIRECT CONFLICT WITH PROPOSED NEW CONSTRUCTION SHALL BE SAVED AND PROTECTED FROM DAMAGE.
- THE CONTRACTOR SHALL GIVE ALL PROPERTY OWNERS AND/OR TENANTS OF DEVELOPED PROPERTY ABUTTING THE CONSTRUCTION OF THIS PROJECT A MINIMUM OF TEN (10) DAYS NOTICE PRIOR TO START OF CONSTRUCTION. THIS INCLUDES ALL RESIDENTS ON ROOSEVELT, SOUTH OF 17TH STREET.
- THE CONTRACTOR SHALL BE RESPONSIBLE FOR PRESERVING PROPERTY IRONS. THE CONTRACTOR WILL BE REQUIRED TO RE-ESTABLISH ANY PROPERTY IRONS WHICH ARE DAMAGED OR DESTROYED BY HIS CONSTRUCTION OPERATIONS. SUCH IRONS SHALL BE RE-ESTABLISHED BY A LICENSED LAND SURVEYOR IN ACCORDANCE WITH STATE LAWS.
- THE WATER DISTRIBUTION DIVISION SHALL FIELD LOCATE WATER VALVES ONE TIME DURING CONSTRUCTION WHEN REQUESTED BY THE CONTRACTOR. IT SHALL BE THE CONTRACTOR'S RESPONSIBILITY TO PRESERVE SUCH FIELD LOCATIONS DURING THE CONSTRUCTION PROCESS. WATER VALVES, VALVE BOXES OR FIRE HYDRANTS DAMAGED DURING CONSTRUCTION SHALL BE REPAIRED BY CONTRACTOR AT HIS OWN EXPENSE. VALVE BOXES AND WATER METERS WITHIN THE PROJECT LIMITS SHALL BE ADJUSTED TO MATCH FIELD GRADES.
- CONTRACTOR SHALL LIMIT THE EXTENT OF TRENCH OPEN OVERNIGHT AND WEEKENDS TO LESS THAN 50 FEET.
- EXISTING UTILITIES AND THEIR LOCATION, AS SHOWN ON THE PLANS REPRESENT THE BEST INFORMATION OBTAINABLE FOR DESIGN. LOCATION INFORMATION HAS BEEN OBTAINED FROM THE VARIOUS COMPANIES AND IS EITHER FROM COMPANY UTILITY DRAWINGS OR COMPANY PROVIDED FIELD LOCATIONS. THE PLAN LOCATIONS SHOWN ARE NOT GUARANTEED. ADDITIONAL EXISTING UTILITIES MAY ALSO BE ENCOUNTERED.
- ALL TRAFFIC CONTROL DEVICES IN THE WORK ZONE (INCLUDING MARKINGS AND SIGNS) AND THEIR INSTALLATION AND MAINTENANCE SHALL COMPLY WITH THE LATEST EDITION OF THE MANUAL ON UNIFORM TRAFFIC CONTROL DEVICES (MUTCD). ALL TRAFFIC CONTROL DEVICES IN THE TRAVELED WAY OR CLEAR ZONE SHALL BE CRASHWORTHY (NCHRP REPORT 350 OR MASH COMPLIANT).
<http://safety.fhwa.dot.gov/roadwaydept/policy/guide/road/hardware/wzcd>
- ALL CONSTRUCTION EQUIPMENT, INCLUDING VEHICLES, MATERIALS, AND DEBRIS, SHALL BE STORED OUTSIDE OF THE CLEAR ZONE, WHERE THIS CANNOT BE ACHIEVED THE CONTRACTOR SHALL PLACE APPROPRIATE SIGNS, OBJECT IDENTIFIERS, AND/OR BARRICADES IN COMPLIANCE WITH MUTCD.
- EXCEPT WHEN REQUIRED FOR SAFETY, TRAFFIC CONTROL SHALL NOT BLOCK ANY LANES OR SIDEWALKS WHEN WORK IS NOT BEING PERFORMED.
- THE CONTRACTOR SHALL PROTECT FROM DAMAGE AND SUPPORT EXISTING UTILITIES THROUGH CONSTRUCTION AS APPROVED BY THE UTILITY OWNER AND THE ENGINEER AT THE CONTRACTOR'S EXPENSE. PLEASE NOTE THE PROXIMITY OF THE EXISTING 20" WATER LINE NORTH OF THE PROPOSED SANITARY SEWER INSTALLATION ALIGNMENT.
- ALL TRAFFIC CONTROL DEVICES IN THE WORK ZONE (INCLUDING MARKING AND SIGNS) AND THEIR INSTALLATION AND MAINTENANCE SHALL COMPLY WITH THE LATEST EDITION OF THE MANUAL ON UNIFORM TRAFFIC CONTROL DEVICES (MUTCD). ALL TRAFFIC CONTROL DEVICES IN THE TRAVELED WAY OR CLEAR ZONE SHALL BE CRASHWORTHY (NCHRP REPORT 350 OR MASH COMPLIANT).
<http://safety.fhwa.dot.gov/roadwaydept/policy/guide/road/hardware/wzcd>
- ALL CONSTRUCTION EQUIPMENT, INCLUDING VEHICLES, MATERIALS, AND DEBRIS, SHALL BE STORED OUTSIDE OF THE CLEAR ZONE, WHERE THIS CANNOT BE ACHIEVED THE CONTRACTOR SHALL PLACE APPROPRIATE SIGNS, OBJECT IDENTIFIERS, AND/OR BARRICADES IN COMPLIANCE WITH MUTCD.
- EXCEPT WHEN REQUIRED FOR SAFETY, TRAFFIC CONTROL SHALL NOT BLOCK ANY LANES OR SIDEWALKS WHEN WORK IS NOT BEING PERFORMED.
- CONTRACTOR SHALL REMOVE AND DELIVER TO 1801 S. McLEAN ALL MANHOLE FRAMES AND LIDS, HYDRANTS, VALVES, ETC., NOTED FOR REMOVAL DURING CONSTRUCTION. ALL ASSOCIATED COSTS TO TRANSPORT THE SALVAGED MATERIAL WILL BE SUBSIDIARY TO THE BID ITEM "TRANSPORTATION OF SALVAGED MATERIALS".
- ALL AREAS DISTURBED BY CONSTRUCTION THAT ARE ADJACENT TO DEVELOPED PROPERTIES SHALL BE RESTORED WITH SOD TO MATCH EXISTING TURF TYPE. RESTORATION OF DISTURBED AREAS SHALL INCLUDE, BUT NOT BE LIMITED TO, TOP SOIL PREPARATION AND SODDING. ALL SODDING WORK SHALL BE IN ACCORDANCE WITH CITY STANDARD SPECIFICATIONS AND THE CITY ADMINISTRATIVE REGULATION NO. AR65, WHICH GOVERNS CLEANUP AND RESTORATION OR REPLACEMENT FOLLOWING CONSTRUCTION. THE "RECAPITULATION OF QUANTITIES" SHOWS THE ESTIMATED SQUARE YARDS OF SODDING, WITH A BID ITEM FOR THE SAME. WHEN THE WEATHER/SEASON PREVENTS THE INSTALLATION OF SOD, THE CONTRACTOR SHALL BE RESPONSIBLE FOR INSTALLING EROSION CONTROL BLANKET (CUREX 1, OR APPROVED EQUAL) AT THE BACK OF CURB (8' WIDE MINIMUM). ALL COSTS FOR EROSION MAT INSTALLATION SHALL BE SUBSIDIARY TO "SITE RESTORATION".
- SEE THE PAVING AND ROADSIDE IMPROVEMENT PLANS FOR DELINEATION OF SODDING AREAS. THIS IS FOR INFORMATION ONLY.
- THE BID PRICE FOR "CONCRETE SAFETY BARRIER (TEMPORARY)" SHALL INCLUDE PROVIDING THE BARRIER AND INCLUDE THE COST OF MULTIPLE INSTALLATIONS AND REMOVALS AS NECESSARY TO ALLOW CONSTRUCTION OF THE PROJECT. REFER TO THE TRAFFIC CONTROL PLANS FOR THE PROPER HANDLING OF TRAFFIC DURING VARIOUS PHASES. THE QUANTITY OF BARRIER NOTED IN THE RECAPITULATION REPRESENTS THE MAXIMUM AMOUNT OF BARRIER THAT WILL BE NEEDED FOR THE SET-UP REQUIRING THE MOST BARRIER. NOT ALL SET-UPS WILL NECESSARILY REQUIRE THIS AMOUNT OF BARRIER.



INDEX TO DRAWINGS

SHEET NO.	DESCRIPTION
01	TITLE SHEET
02	KEY MAP
03	SUMMARY OF QUANTITIES
04-05	SANITARY SEWER DETAILS
06-10	SANITARY SEWER PLAN & PROFILES
11-13	WATER LINE PLAN & PROFILES
14-16	WATER LINE DETAILS
17-21	PAVING REPLACEMENT & SITE RESTORATION PLANS
22-30	PAVEMENT REPLACEMENT DETAILS
31	PAVEMENT MARKING PLAN & DETAILS
32-43	TRAFFIC CONTROL
44	BUBBLE MAP
45-51	EROSION CONTROL PLANS & DETAILS



BENCHMARKS

- BM #2
Chiseled square on top of curb on east side of entrance to old doms between Bluff and Fountain, 22' north of north curb of 17th Street North.
Elev. = 1399.26 NAVD 88
- BM #3
Chiseled square on top of curb on south return to east entrance to The Fieldhouse bar at 17th Street North and Gentry, 105' south of centerline of 17th Street North.
Elev. = 1356.33 NAVD 88
- BM #4
Chiseled square on south side of 1st light pole west of southeast corner of WSU parking lot, north side of 17th Street North at Roosevelt Circle.
Elev. = 1394.71 NAVD 88
- BM #5
Chiseled square on top of curb at south return of 1st set of parking stalls south of 17th Street North on east side of Yale.
Elev. = 1382.175 NAVD 88
- BM #6
Chiseled square on top of north curb of 16th Street North, 10' +/- west of curb inlet on northwest corner of Yale and 16th Street North.
Elev. = 1376.235 NAVD 88



SANITARY SEWER PLANS FOR
17TH STREET SANITARY SEWER
 WICHITA, KANSAS

©2015
MKEC Engineering
All Rights Reserved
www.mkec.com
These drawings and their contents, including, but not limited to, all concepts, designs, & ideas are the exclusive property of MKEC Engineering (MKEC), and may not be used or reproduced in any way without the express consent of MKEC.

TITLE SHEET

PROJECT NO.	468-85021	
DATE	MARCH 2015	
SCALE	AS SHOWN	
DESIGNED	JRA	
DRAWN	ABC	
CHECKED	JRA	
NO.	REVISION	DATE
SHEET NO.		
01 OF 51		

J:\PROJECTS\2014\140101073_COW_17TH STREET SANITARY SEWER\05-CIVIL\CADD\SAN14173_BTL.DWG