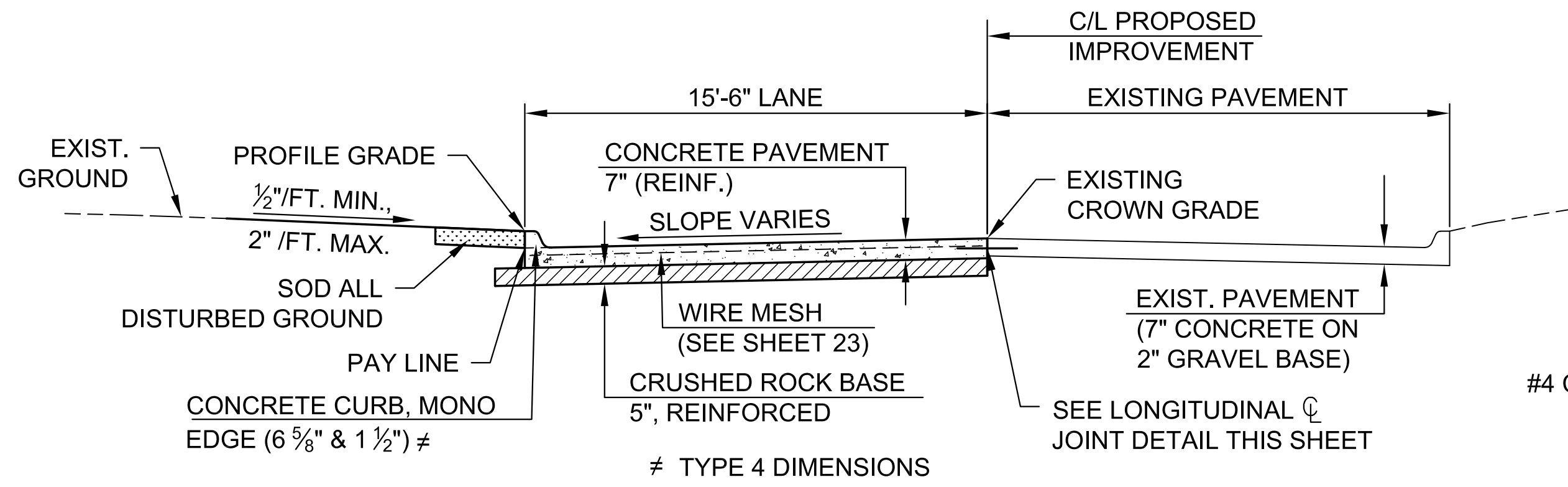
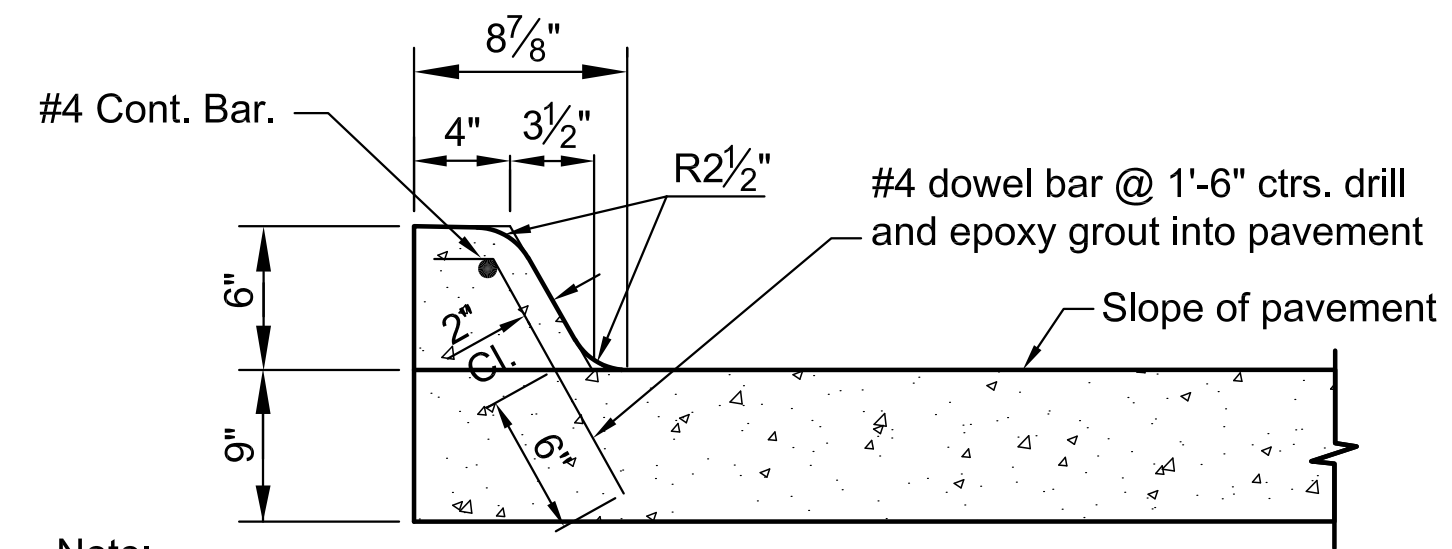


TYPICAL SECTION - 17TH STREET NORTH

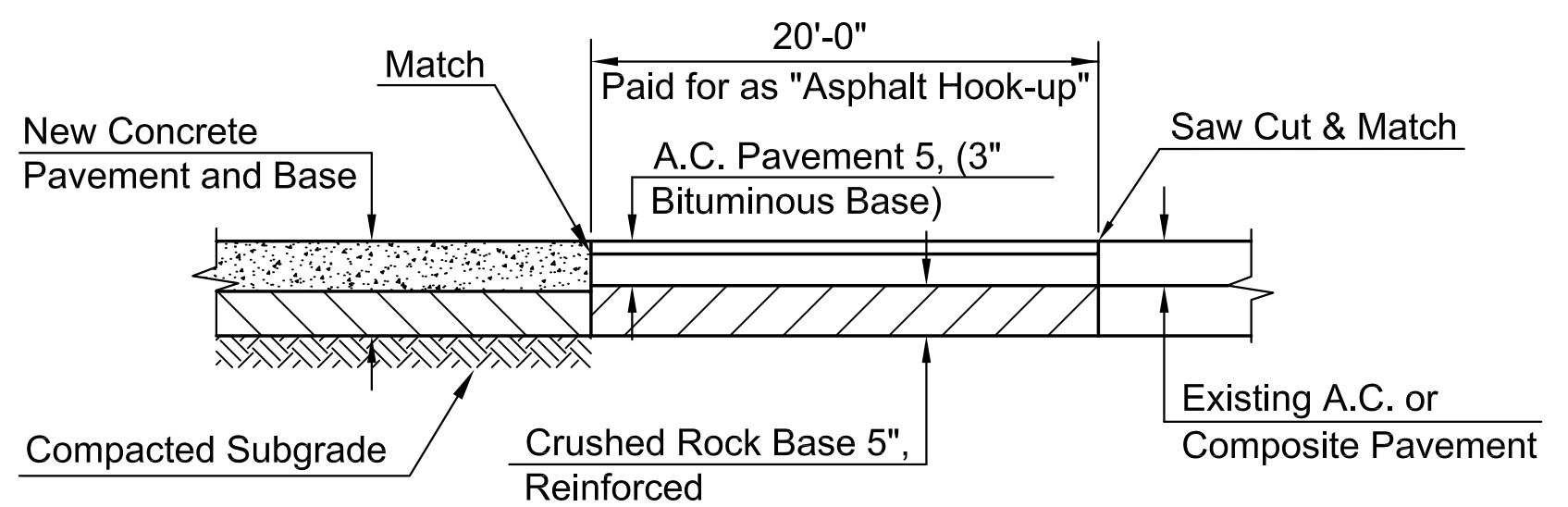


TYPICAL SECTION - YALE AVENUE



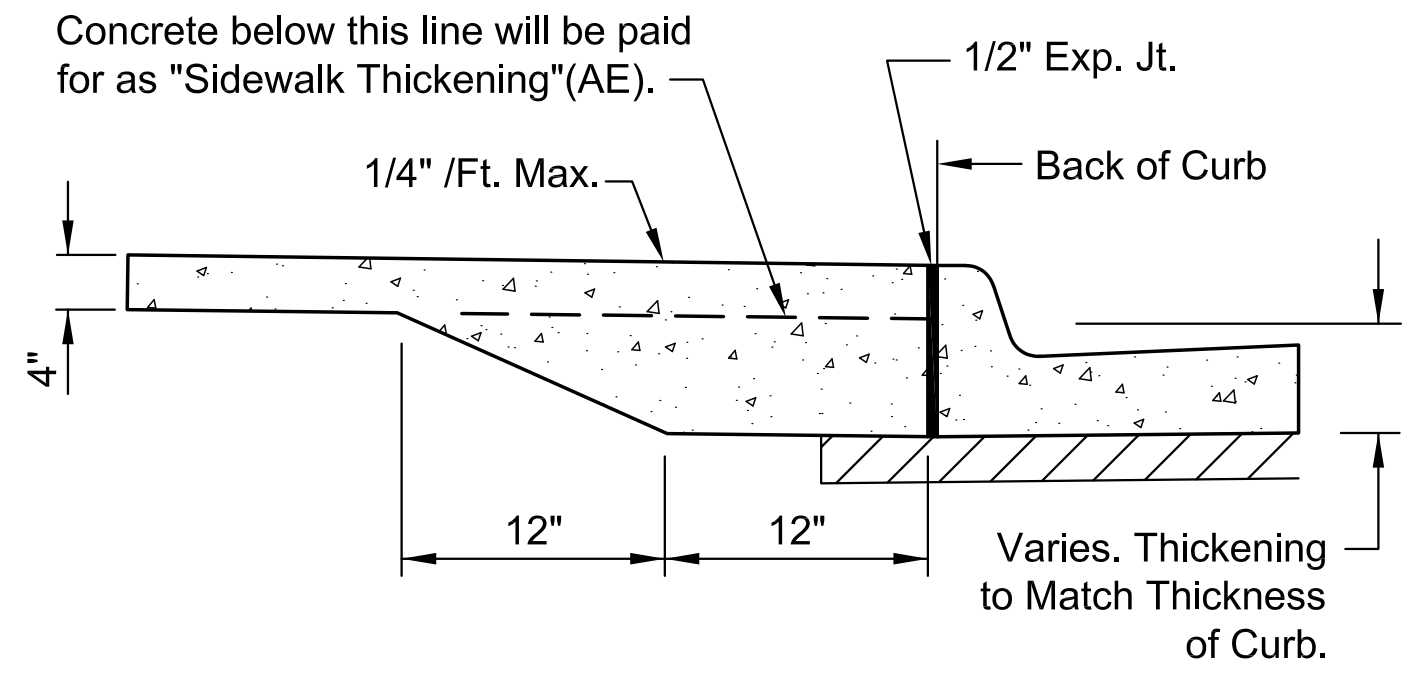
Note:
Work is paid for as:
Concrete Curb, Mono Edge (6"x1 1/2").

**CONCRETE CURB, MONO EDGE (6" & 1 1/2")
(ON EXISTING CONCRETE PAVEMENT)**



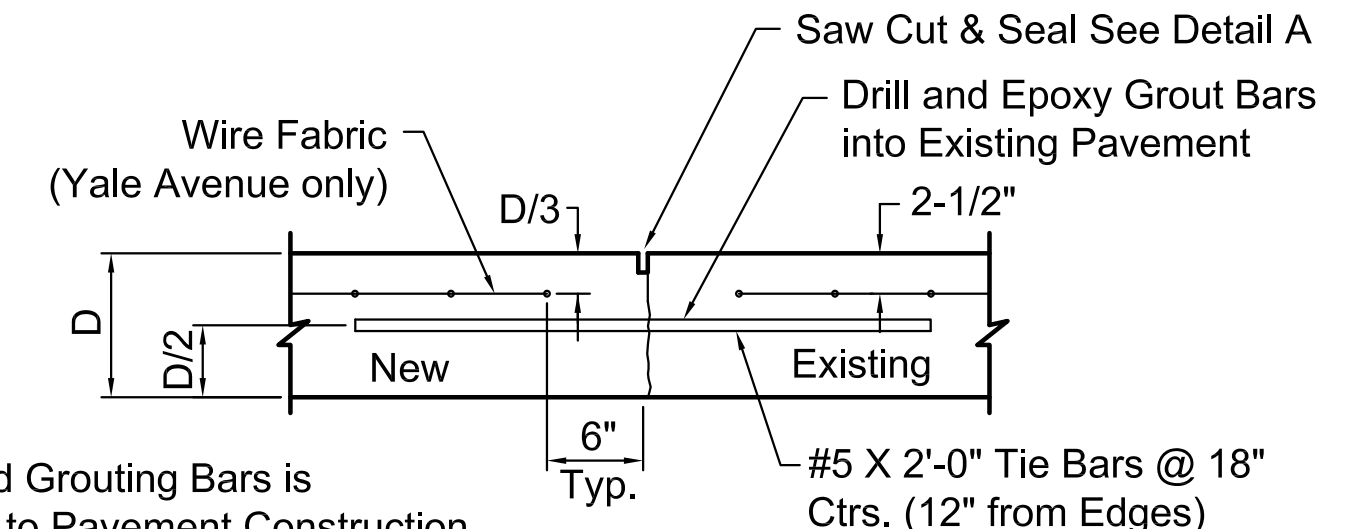
ASPHALT HOOKUP DETAIL

The bid item "Asphalt Hookup" shall include pavement removal, grading, rock base, geogrid, and A.C. Pavement as shown. Curb and Gutter is paid for separately.



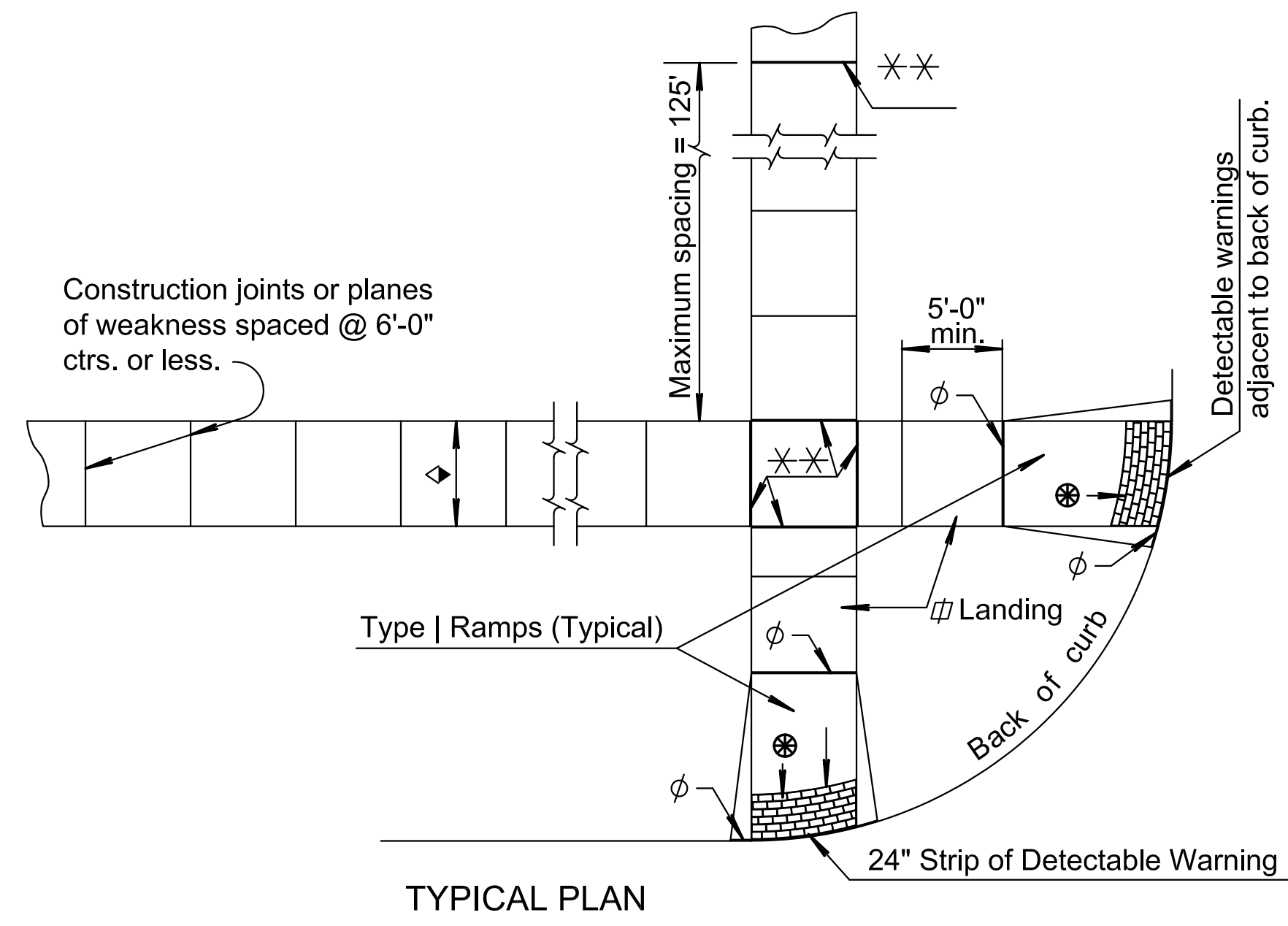
SIDEWALK THICKENING

NOTE: All Sidewalk at Back of Curb Shall Conform to this Detail

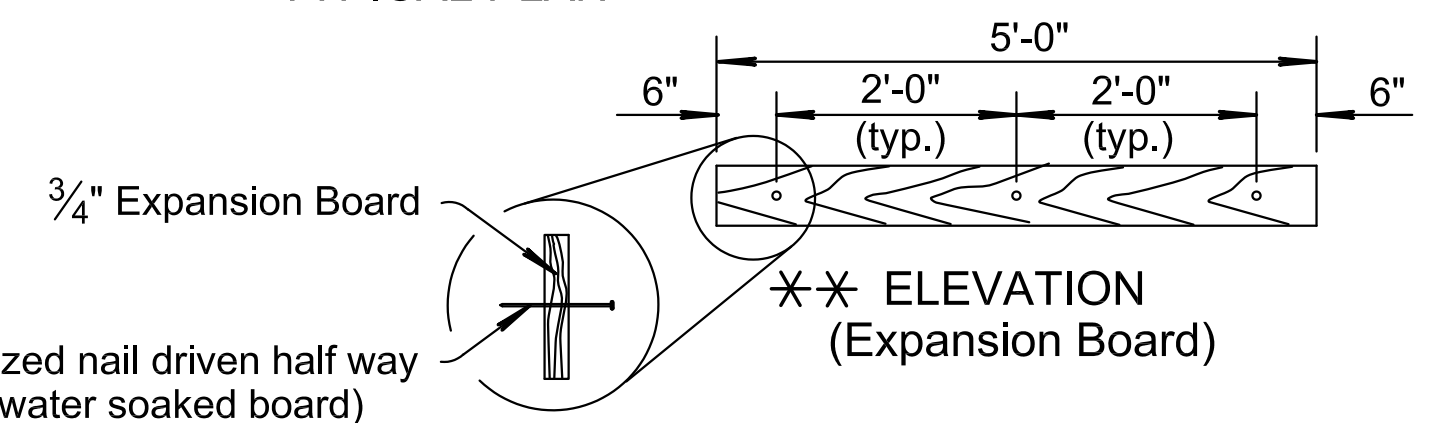


NOTE:
Drilling and Grouting Bars is subsidiary to Pavement Construction.

LONGITUDINAL CENTERLINE JOINT DETAIL



TYPICAL PLAN



16d Galvanized nail driven half way thru (24 hr. water soaked board)

For other than 5'-0" (width) use 6" from the end and balanced (3'-0" max.) nail spacing.

∅ Expansion Joint (3/4" board) placed at either back of curb line or at sidewalk back of curb line or at sidewalk line.

✱✱ Expansion joint (3/4" board) located as shown.

◊ Variable width (5'-0" min.). Entrance walk to be same width as approach walk. Use sidewalk width of 4'-0" where existing conditions prohibit use of 5'-0".

⊛ New construction ramp slopes are 12:1 or flatter. Desirable ramp slopes for existing sites are 12:1 or flatter. Where space limitations prohibit construction of a 12:1 slope on existing sites, use the following slopes:
8:1 or flatter for a maximum rise of 3 inches
10:1 or flatter for a maximum rise of 6 inches

∩ Use a landing slope of 48:1 or flatter. Landings are the same width as ramp and a minimum 5'-0" in length.

∪ Use a counter slope of 20:1 or flatter at the base of sidewalk ramps. See curb and gutter detail sheet.

⊗ Detectable warning installation is typical and required on Sidewalk Ramps Type 1, Type 2, Type 3, median ramp crossings and other locations as shown in the plans. See ramp detail sheet.

©2015 MKEC Engineering All Rights Reserved
www.mkec.com
These drawings and their contents, including, but not limited to, all concepts, designs, & ideas are the exclusive property of MKEC Engineering (MKEC), and may not be used or reproduced in any way without the express consent of MKEC.

MISCELLANEOUS PAVEMENT DETAILS

PROJECT NO.	468-85021	
DATE	MARCH 2015	
SCALE	NONE	
DESIGNED	DRAWN	CHECKED
JRA	WNJ	JRA

NO.	REVISION	DATE

PLOTTED: Tuesday, May 12, 2015 @ 01:25PM
 J:\PROJECTS\2014\101010773_COW_17TH STREET SANITARY SEWER\05-CIVIL\CAD\PAV\14773_E501.DWG